

SELECT[®] HIGH OUTPUT

High-Output Residential Gas Water Heaters



Highest Hot Water Outputs - Capacity/input combinations up to 98 gallons/72, 100 BTU produce recoveries up to 81 gallons per hour, with deliverable hot water up to 150 gallons.

Diffuser Dip Tube - Helps reduce lime and sediment buildup, maximize hot water output. Made of State PEXAN[™], a cross-link PEX polymer that can withstand long-term exposure to water temperatures up to 400° F.

Green Choice[™] Eco-Friendly Gas Burner - Patented design reduces NOx emissions by up to 33%, complies with southern California and Texas requirements.

Easy-To-Light Piezo Igniter - For fast “one-hand” pilot ignition, standard on C3 Technology models.

Durable Brass Tamper-Resistant Drain Valve.

Glasslined Tank - For long-lasting protection against rust and corrosion.

Thick, CFC-Free Foam Insulation.

Aluminum Anode Rod - Help protect against rust and corrosion for long tank life.

Factory-Installed Side-Mounted Temperature & Pressure (T&P) Relief Valve -

Top-mounted T&P Valve available as option on C3 Technology model.

C3 Technology[™] Gas Water Heater Design - See other side.

6-Year Limited Tank and Parts Warranty

Heat Trap Nipples Factory Installed on All Models

Code Compliance – All models meet or exceed federal minimum energy standards effective January 20, 2004, according to latest editions of the National Appliance Energy Conservation Act (NAECA). They also comply with the latest editions of the B.O.C.A. National Codes, C.E.C., U.B.C., S.B.C.C., C.A.B.O. and the H.U.D. standards. All models design-certified by CSA International according to ANS Z21.10.1 or Z21.10.3 standards governing storage-type water heaters.



For more information on Select[®] contact:
State Water Heaters
500 Tennessee Waltz Parkway, Ashland City, TN 37015
800.365.0024 Toll-free USA
www.statewaterheaters.com

SRGSS01806

April 2008R

SOLID.STATE.



SELECT[®] HIGH OUTPUT

High-Output Residential Gas Water Heaters



MODEL NUMBER	PEAK DEMAND OUTPUT (1st Hour Rating Gallons)	ENERGY FACTOR	GAL. CAP.	BTU INPUT PER HOUR NATURAL †	RECOVERY 90°F RISE GALLONS	R VALUE	DIMENSIONS IN INCHES							APPROX. SHIPPING WEIGHT (LBS.)
							A	B	C	D	E	F	DRAFT HOOD OUTLET	
GS6 40 YRRT	88	.60	38	50,000	48	16	58-1/2	54-3/4	20-1/2	13-3/8	8	48-7/8	4	138
GS6 50 YRRT	90	.58	48	50,000	51	8	60-7/8	56-1/2	20	13-3/8	8	50-3/8	4	172
GS6 50 YRRT 5	93	.58	50	65,000	67	16	63-7/8	59-1/2	22	15-1/2	8	54-1/8	4	195
GS6 65 YRRT	116	.57	65	65,000	67	16	65	60	24	15 1/2	8	54-1/4	4	215
GS6 75 XRRT*	N/A	N/A	74	75,100	81	16	61	57	26-1/2	14-3/4	16	50-1/4	4	275
GS6 100 XRRT*	N/A	N/A	98	75,100	81	10	68-1/2	65	26-1/2	15-3/16	16	57-3/8	4	350

Recoveries are rounded to nearest gallon

Water Connections – 1" on 75-gallon; 1-1/4" on 100-gallon models; 3/4" on all other models

*Not equipped with C3 Technology

For 10-Year Tank and 6-Year Parts Warranty, change "6" to "X" in Model Number (GSX 40 YRRT)

When ordering top-mounted T&P Valve (C3 Technology models only), add "G" to model number (GS6 40 YRRT G)

When ordering Propane, change "Y" to "H" in model number (GS6 40 HRRT), or "X" to "C" in model number (GS6 75 CRRS)

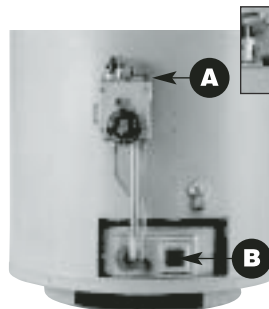
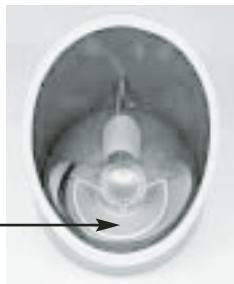
† Propane Gas – GS6 40 HRRT: 47,000 BTU Input
 GS6 50 HRRT: 45,000 BTU Input
 GS6 50 HRRT 5: 55,000 BTU Input
 GS6 65 HRRT: 62,500 BTU Input

Flammable Vapor Ignition Resistant C3 Technology™ Water Heaters

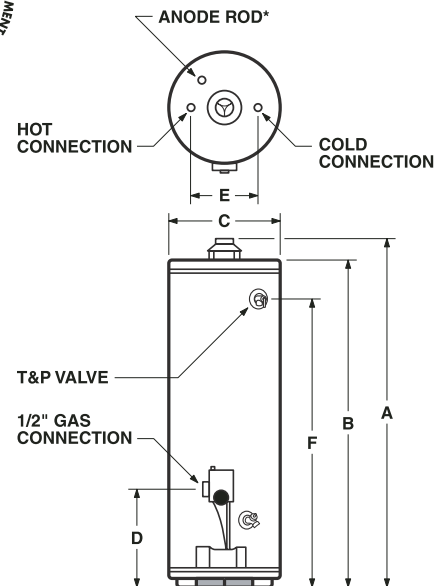
Corderite Combustion Containment (C3) design meets American National Standards Institute standards (ANS Z21.10.1) that deal with the accidental or unintended ignition of flammable vapors, such as those emitted by gasoline.

Covered by four U.S. patents, C3 Technology gas water heaters feature a sealed combustion chamber with air intake screen and a fireproof Corderite flame arrestor built into the water heater base. In addition, a Thermal Cutoff (TCO) device, integral with the thermocouple, is designed to shut off gas flow to the burner and pilot if poor combustion is detected. See chart above for Select High Output C3 Technology water heaters.

In the unlikely event that flammable vapors accidentally enter the combustion chamber, the Corderite flame arrestor is designed so any flames burn off the top surface and cannot escape down through the arrestor.



- A. Easy-to-light Piezo Igniter
- B. View port for easy inspection of burner inside sealed combustion chamber



*Location for optional top-mounted T&P Valve, if ordered from factory (C3 models only). To order, add "G" to model number (GSX 40 YRRT G).

For complete information on limited warranties, consult written warranty, or contact the State Customer Care Center, 1-800-365-0024.

State Industries, Inc. reserves the right to make product changes or improvements without prior notice.

For more information on Select[®] contact:
 State Water Heaters
 500 Tennessee Waltz Parkway, Ashland City, TN 37015
 800.365.0024 Toll-free USA
 www.statewaterheaters.com

SRGSS01806

April 2008R

SOLID. STATE.



Free Manuals Download Website

<http://myh66.com>

<http://usermanuals.us>

<http://www.somanuals.com>

<http://www.4manuals.cc>

<http://www.manual-lib.com>

<http://www.404manual.com>

<http://www.luxmanual.com>

<http://aubethermostatmanual.com>

Golf course search by state

<http://golfingnear.com>

Email search by domain

<http://emailbydomain.com>

Auto manuals search

<http://auto.somanuals.com>

TV manuals search

<http://tv.somanuals.com>