



A KOHLER COMPANY

BATH CLASSICS™

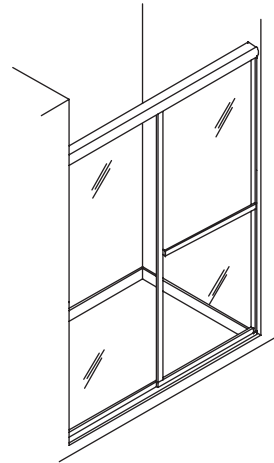
**DELUXE BY-PASS SHOWER DOORS**

**5970**

**ALSO 5974**

**Features**

- Heavy-duty, anodized aluminum-framed sliding glass doors
- Out-of-plumb adjustability allows for easy installation
- Panels are guided by a unique continuous bottom track guide system
- Reversible top track and towel bar allow a choice between a rounded or accented design
- Aluminum components extruded from alloy 6063-T5
- Easy-to-clean bottom track
- Tempered glass ensures maximum safety and durability
- Screw covers included
- Stainless steel hardware prevents rusting or corrosion



**Codes/Standards Applicable**

Specified model meets or exceeds the following:

- ANSI Z97.1 (tempered glass)

**Colors/Finishes**

- S: Silver
- PB: Polished Brass

**Specified Model**

Model	Application	Glass Texture	Pattern	* Frame Colors/Finishes	
5970-45*	Shower	Pebbled	None	<input type="checkbox"/> S	<input type="checkbox"/> PB
5970-46*	Shower	Pebbled	None	<input type="checkbox"/> S	<input type="checkbox"/> PB
5970-48*	Shower	Pebbled	None	<input type="checkbox"/> S	<input type="checkbox"/> PB
5970-59*	Shower	Pebbled	None	<input type="checkbox"/> S	<input type="checkbox"/> PB
5974-48*-G04	Shower	Smooth	Mirror	<input type="checkbox"/> S	<input type="checkbox"/> PB
5974-48*-G10	Shower	Pebbled	None	<input type="checkbox"/> S	<input type="checkbox"/> PB

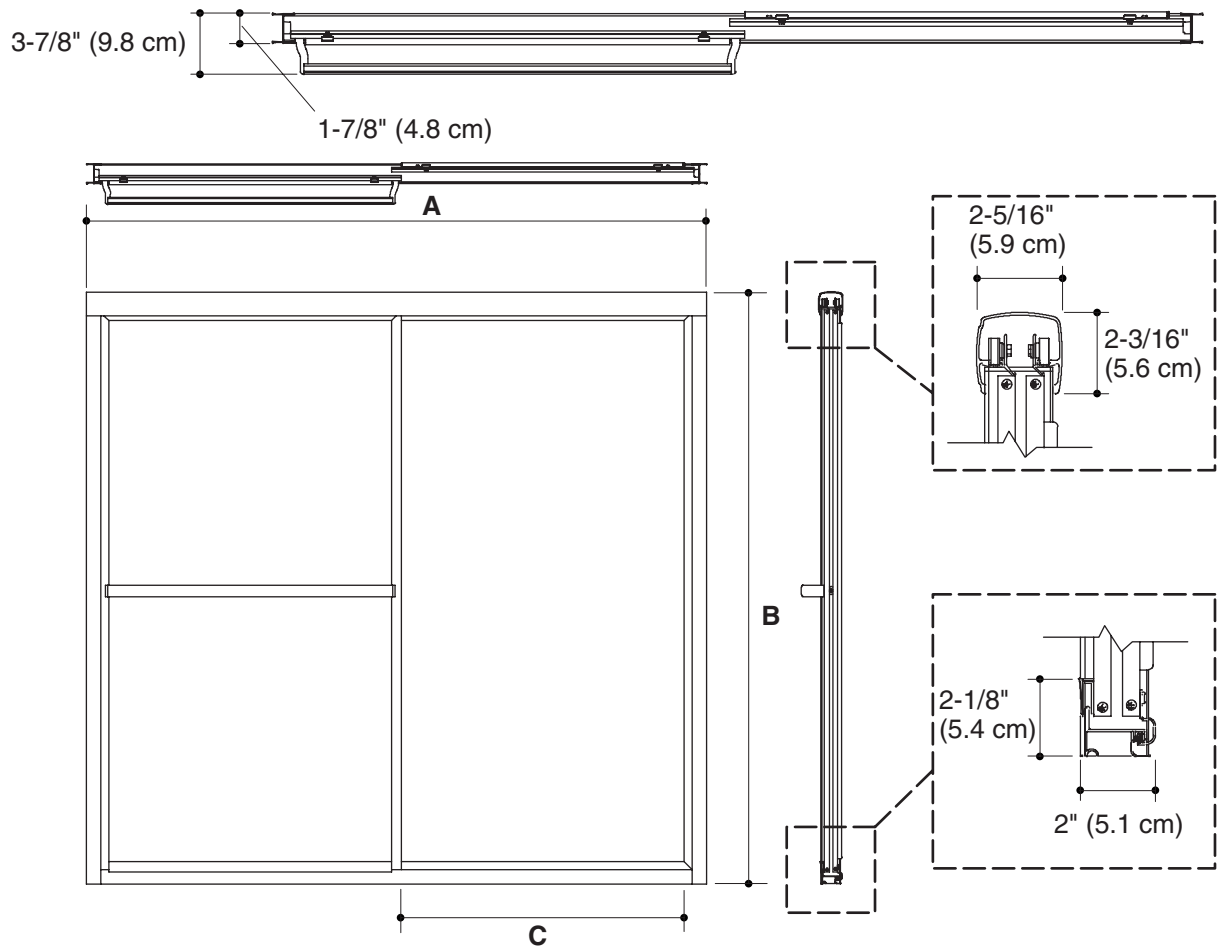
**\*NOTE: Add appropriate frame color/finish code to the end of the unit model # when ordering.**

**SterlingPlumbing.com**

Visit us online for fixture color choices, detailed product information, color photos, installation instructions, care guides, and warranties. Sterling offers additional lines of plumbing products to complement the Sterling product you've chosen. Sign up for the Sterling monthly e-newsletter which showcases our latest product innovations. You may also call our Sterling Plumbing Answer Center from within the USA at 1-888-STERLING in addition to consulting with your local dealer. Sterling. Strong. Professional. Design.

# BATH CLASSICS™

Model	A (Max Width)	B (Height)	C (Walk Through Max)
5970-45*	44-1/2" (113 cm)	70" (177.8 cm)	20-5/16" (51.6 cm)
5970-46*	46-1/2" (118.1 cm)	70" (177.8 cm)	21-5/16" (54.1 cm)
5970-48*	48-7/8" (124.1 cm)	70" (177.8 cm)	22-1/2" (57.2 cm)
5970-59*	59-3/8" (150.8 cm)	70" (177.8 cm)	27-3/4" (70.5 cm)
5974-48*	48-7/8" (124.1 cm)	70" (177.8 cm)	22-1/2" (57.2 cm)



**Product Diagram**

## Free Manuals Download Website

<http://myh66.com>

<http://usermanuals.us>

<http://www.somanuals.com>

<http://www.4manuals.cc>

<http://www.manual-lib.com>

<http://www.404manual.com>

<http://www.luxmanual.com>

<http://aubethermostatmanual.com>

Golf course search by state

<http://golfingnear.com>

Email search by domain

<http://emailbydomain.com>

Auto manuals search

<http://auto.somanuals.com>

TV manuals search

<http://tv.somanuals.com>