

Sterling Limited Five Year Warranty

Sterling Plumbing Group, Inc. ("Sterling") warrants this faucet to be free of manufacturing defects and to be drip free for five years. Damage due to improper installation, maintenance or handling are not considered manufacturing defects and are not covered by this warranty. Labor, shipping and installation costs or other charges incidental to warranty service are to be borne by the original purchaser. This warranty is valid for the original purchaser only.

Sterling will, at its election, repair or replace a faucet where Sterling's inspection discloses any such defects occurring in normal residential usage.

To obtain warranty service return the defective part(s) to your cooperating retail seller or send them to our Customer Service Department, P.O. Box 427, Sheridan, AR 72150. Refer any questions to our Customer Service Department at 1-800-245-2207.

IMPLIED WARRANTIES INCLUDING THAT OF MERCHANTABILITY AND FITNESS FOR A PARTICULAR PURPOSE ARE EXPRESSLY LIMITED TO ONE YEAR FROM DATE OF PURCHASE. STERLING DISCLAIMS ANY RESPONSIBILITY FOR SPECIAL, INCIDENTAL OR CONSEQUENTIAL DAMAGES. Some states do not allow limitations on how long an implied warranty lasts, or the exclusion or limitation of special, incidental or consequential damages, so these limitations or exclusions may not apply to you. This warranty gives you special legal rights. You may also have other rights which vary from state to state.

This is our exclusive written warranty.

For more information on Sterling Faucets, please call 1-800-STERLING.

E040500

5/99

STERLING
A KOHLER COMPANY

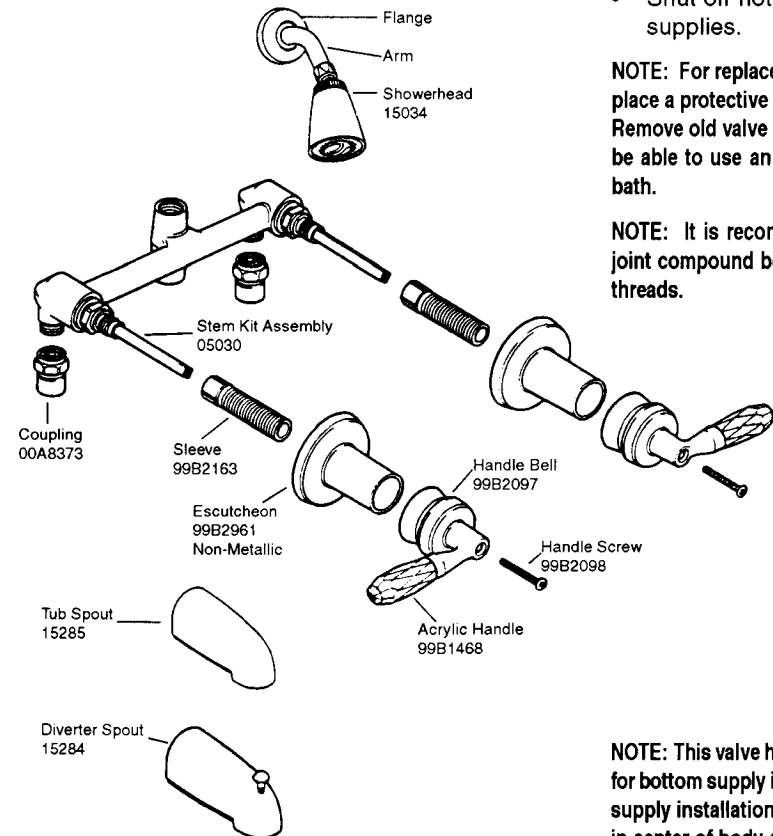
P.O. Box 427, Oklahoma Street
Sheridan, Arkansas 72150-0427

Download from www.Somanuals.com. All Manuals Search And Download.

STERLING
A KOHLER COMPANY

INSTALLATION INSTRUCTIONS

WASHERLESS DECORATOR TWIN HANDLE TUB / SHOWER FAUCET



Before you begin

Use this diagram to familiarize yourself with the various parts of the tub / shower faucet. Make sure you have all the illustrated parts before you begin installation.

- Observe all local plumbing codes.
- Carefully inspect the valve parts for any damage.
- Flush all piping thoroughly before installing.
- Shut off hot & cold water supplies.

NOTE: For replacement installations, place a protective covering over bath. Remove old valve assembly. You may be able to use an access behind the bath.

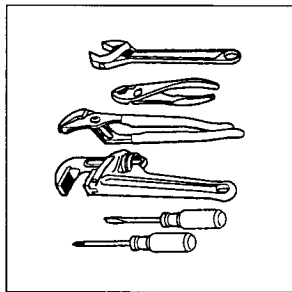
NOTE: It is recommended that pipe joint compound be used on all metal threads.

NOTE: This valve has been assembled for bottom supply installation. For top supply installation remove ejector tee in center of body and install in opposite outlet.

E040500

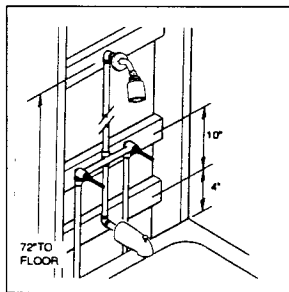
TUB & SHOWER / SHOWER ONLY / TUB ONLY

2 Items you need



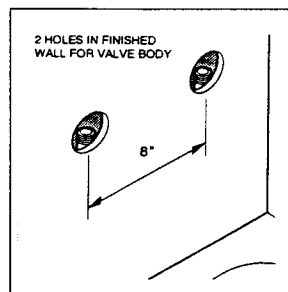
1 Adjustable wrench, pliers, channel lock pliers or pipe wrench, screw drivers

3 Installation prep



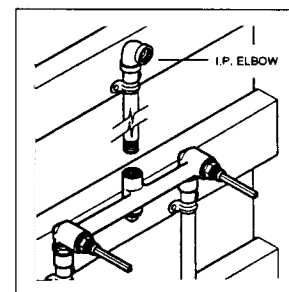
1 Tub & Shower Installation
NOTE: 2' x 6' wall construction

4 Valve installation



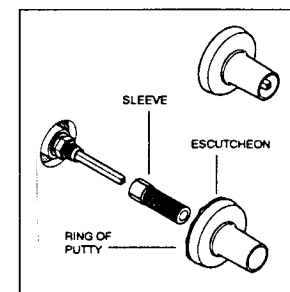
1 Make two 2" diameter holes in wall on 8" centers. Position supply lines at hole centers.

5 Outlet attachment

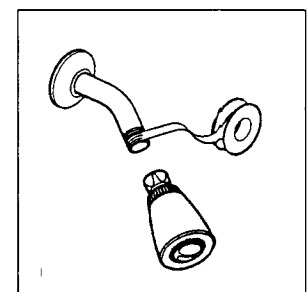


1 Install 1/2" iron pipe between valve body outlet and shower elbow.

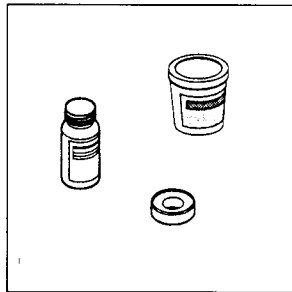
6 Trim assembly



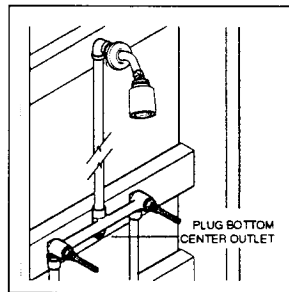
1 Screw plastic sleeve onto threads at base of stem. Place ring of putty underedge of escutcheon. FINGER tighten escutcheon onto sleeve securely against wall.



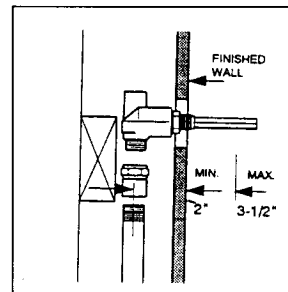
4 Make 7/8" hole for shower arm. Slide flange on to arm and thread arm into I.P. elbow. Slide flange against wall. Attach showerhead to arm with teflon tape. Hand tighten. If wrench is used, protect chrome finish.



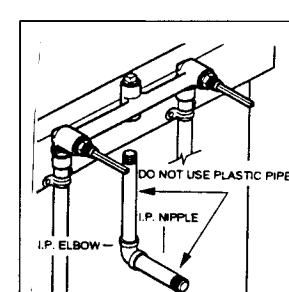
2 thread sealant, plumber's putty and teflon tape.



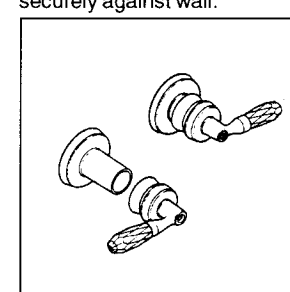
2 Shower only Installation
NOTE: 2' x 6" wall construction



2 Position valve body so distance between center of supply lines and finish surface of wall DOES NOT EXCEED min. or max dimensions.



2 Use 1/2" iron pipe from valve body down to I.P. elbow.



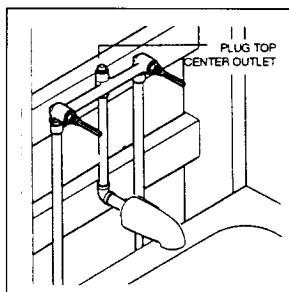
2 Attach both handles with handle screws provided. Snap index button into each handle.

SPECIAL NOTE:
Before enclosing wall opening, operate valve repeatedly and check for leaks.

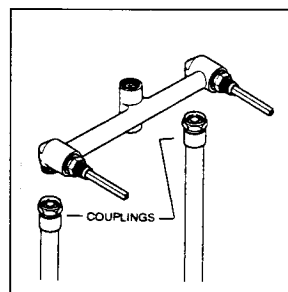
MATERIAL

- 1/2" iron pipe
- 1/2" elbows: iron pipe

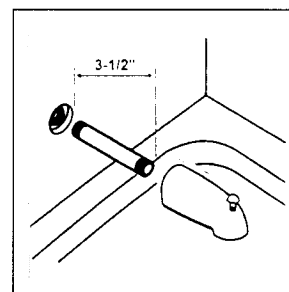
3 You may need the above materials.



3 Tub Only Installation
NOTE: 2' x 6' wall construction



3 Connect couplings to hot and cold supply lines using thread sealant or teflon tape on pipe. Connect valve body to hot and cold supplies using 1/2" couplings.
Download from Www.Somanuals.com. All Manuals Search And Download.



3 After wall is finished, install 1/2" nipple to extend 3-1/2" beyond finished wall. Install spout.

Free Manuals Download Website

<http://myh66.com>

<http://usermanuals.us>

<http://www.somanuals.com>

<http://www.4manuals.cc>

<http://www.manual-lib.com>

<http://www.404manual.com>

<http://www.luxmanual.com>

<http://aubethermostatmanual.com>

Golf course search by state

<http://golfingnear.com>

Email search by domain

<http://emailbydomain.com>

Auto manuals search

<http://auto.somanuals.com>

TV manuals search

<http://tv.somanuals.com>