



A KOHLER COMPANY

ENSEMBLE™

Features

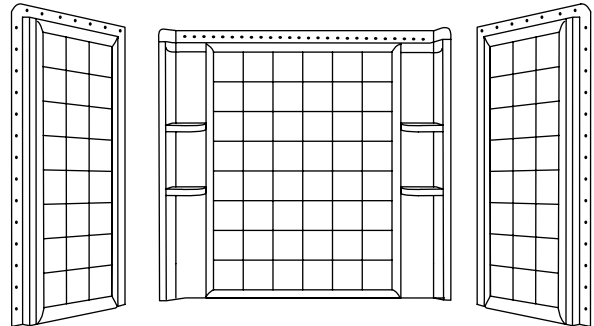
- Compression molded from Sterling's exclusive solid Vikrell® material
- Tongue-and-groove "snap together" design
- Durable high gloss finish
- 10 year consumer/3 year commercial limited warranty
- Tile design
- Wall surround allows for attachment of grab bars
- 60" (152.4 cm) x 33-1/4" (84 cm) x 54" (137.2 cm)

Codes/Standards Applicable

Specified model meets or exceeds the following:

- ANSI Z124.1.2
- IAPMO/UPC
- CSA B45

WALL SURROUND WITH BACKER BOARDS 71124106



Colors/Finishes

- 0: White
- Other: Refer to Price Book for additional colors/finishes

Specified Model

Model	Wall Component Description	Colors/Finishes	
71124106	Wall surround with backer boards	<input type="checkbox"/> 0	<input type="checkbox"/> Other _____

Model	Complete Unit Description	Colors/Finishes	
71120116	Bath and wall surround with backer boards, left hand drain	<input type="checkbox"/> 0	<input type="checkbox"/> Other _____
71120126	Bath and wall surround with backer boards, right hand drain	<input type="checkbox"/> 0	<input type="checkbox"/> Other _____
71120118	Bath and wall surround with backer boards, left hand AFD	<input type="checkbox"/> 0	<input type="checkbox"/> Other _____
71120128	Bath and wall surround with backer boards, right hand AFD	<input type="checkbox"/> 0	<input type="checkbox"/> Other _____

SterlingPlumbing.com

Visit us online for fixture color choices, detailed product information, color photos, installation instructions, care guides, and warranties. Sterling offers additional lines of plumbing products to complement the Sterling product you've chosen. Sign up for the Sterling monthly e-newsletter which showcases our latest product innovations. You may also call our Sterling Plumbing Answer Center from within the USA at 1-888-STERLING in addition to consulting with your local dealer. Sterling. Strong. Professional. Design.

ENSEMBLE™

Technical Information

Model	Door maximum width	Door maximum height
71124106	57-11/16" (146.5 cm)	55-1/2" (141 cm)

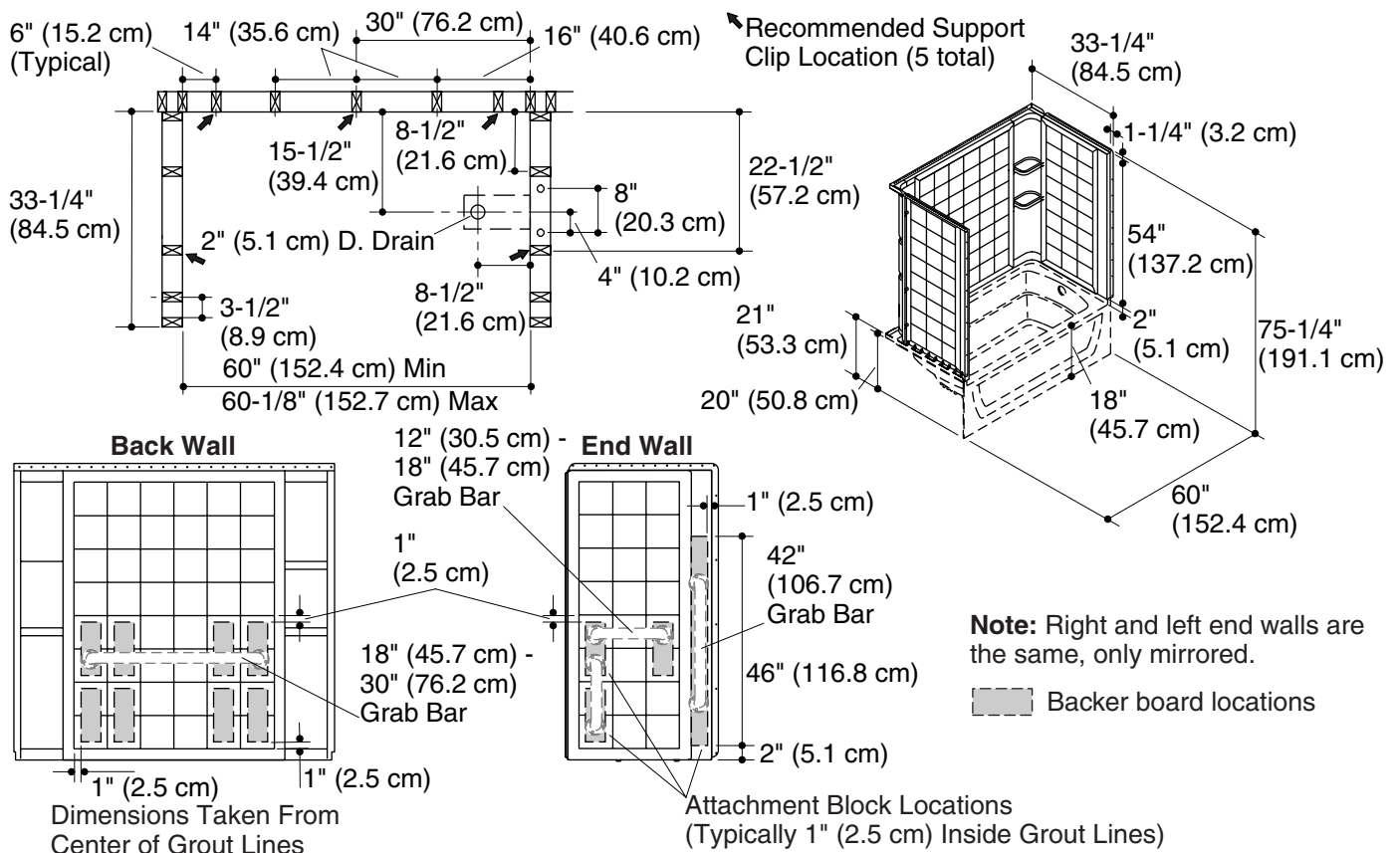
Installation Notes

Install this product according to the installation guide.

End stud positioning is critical if nailing-in flanges are to be used.

Double studding is recommended for pivot shower door installations.

Attach grab bars at the specified backer board locations only.



Product Diagram

ENSEMBLE™ WALL SURROUND WITH BACKER BOARDS

Page 2 of 2
1061193-4-A

STERLING
A KOHLER COMPANY

Free Manuals Download Website

<http://myh66.com>

<http://usermanuals.us>

<http://www.somanuals.com>

<http://www.4manuals.cc>

<http://www.manual-lib.com>

<http://www.404manual.com>

<http://www.luxmanual.com>

<http://aubethermostatmanual.com>

Golf course search by state

<http://golfingnear.com>

Email search by domain

<http://emailbydomain.com>

Auto manuals search

<http://auto.somanuals.com>

TV manuals search

<http://tv.somanuals.com>