



# WIRELESS INDOOR COLOR CAMERA SYSTEM

COMPLETE SYSTEM



## Instruction Manual



Model #  
GX5201  
[www.svat.com](http://www.svat.com)

# PRODUCT WARRANTY & REGISTRATION

Please visit our website at [www.svat.com](http://www.svat.com) to apply for your products warranty registration.

*The warranty registration for is located under the support tab on the SVAT website.*

We take quality very seriously. This is why all of our products come with a one year warranty from the original purchase date against defects in workmanship and materials.

If you have warranty or support issues please contact us using any of the following methods:


SVAT Electronics USA  
2315 Whirlpool St., Unit 333  
Niagara Falls, New York  
USA 14305

SVAT Electronics Canada  
4080 Montrose Road  
Niagara Falls, ON  
Canada L2H 1J9


Phone: 866.946.7828  
Fax: 888.771.1701  
Email: [support@svat.com](mailto:support@svat.com)  
Website: [www.svat.com](http://www.svat.com)

## Warranty Terms

1. SVAT products are guaranteed for a period of one year from the date of purchase against defects in workmanship and materials. This warranty is limited to the repair, replacement or refund of the purchase price at SVAT's option.
2. When service is required, the warranty is validated by the submission of a fully completed warranty card.
3. This warranty becomes void if the product shows evidence of having been misused, mishandled or tampered with contrary to the applicable instruction manual.
4. Routine cleaning, normal cosmetic and mechanical wear and tear are not covered under the terms of this warranty.
5. The warranty expressly provided for herein is the sole warranty provided in connection with the product itself and no other warranty, expressed or implied is provided. SVAT assumes no responsibilities for any other claims not specifically mentioned in this warranty.
6. This warranty does not cover the shipping cost, insurance or any other incidental charges.
7. You MUST call SVAT before sending any product back for repair. You will be given a Return Authorization number. When returning the product for warranty service, please pack it carefully in the original box with all supplied accessories, and enclose your original receipt or copy, and a brief explanation of the problem (include RA #).
8. This warranty is valid only in Canada and the U.S.A.
9. This warranty card cannot be re-issued.



**CAUTION**  
RISK OF ELECTRIC SHOCK, DO NOT OPEN



**TO REDUCE THE RISK OF ELECTRIC SHOCK, DO NOT REMOVE THE COVER (BACK).  
NO USER SERVICEABLE PARTS INSIDE. REFER SERVICING TO  
QUALIFIED SERVICE PERSONNEL.**

## Graphic Symbol Explanation:



The lightning flash with arrowhead symbol, within an equilateral triangle, is intended to alert the user to the presence of uninsulated "dangerous voltage" within the product's enclosure that may be of sufficient magnitude to constitute a risk of electric shock to persons.



The exclamation point within an equilateral triangle is intended to alert the user to the presence of important operating maintenance (servicing) instructions in the literature accompanying the appliance.

**WARNING: TO PREVENT FIRE OR SHOCK HAZARDS, DO NOT EXPOSE THIS UNIT TO RAIN OR MOISTURE**

# TABLE OF CONTENTS

WHAT IS INCLUDED .....	1
WHAT IS COMPATIBLE .....	1
FEATURES .....	2
THINGS TO CONSIDER .....	2
INSTALLING THE CAMERA .....	2
INSTALLING THE MONITOR.....	3
ADVANCED FEATURES.....	3 - 5
MONITOR FUNCTIONS.....	5
TROUBLESHOOTING .....	6
SPECIFICATIONS .....	7
DRILLING TEMPLATE .....	8
GX515B ACCESSORY.....	9

## WHAT IS INCLUDED



1 Monitor



1 Camera

- 2 Window Warning Stickers
- Mounting Hardware
- 1 Year Warranty
- Instruction Manual
- Online/Toll Free Tech Support



1 RCA Wire



2 Power Adapters

## WHAT IS COMPATIBLE

The GX5201 is compatible with TVs, VCRs, DVRs, computers and other SVAT systems including:



WSE201



WSE103



GX515



GX522



ClearVu DVRs



Any TV or VCRs

## FEATURES

- 2.4 GHz wireless technology
- Plug & Play installation
- 2.5 inch TFT-LCD screen
- Adjustable brightness, color, contrast, alarm volume and audio volume
- The system supports up to 3 cameras
- IR Night vision allows you to see in the dark up to 10ft away
- The LCD monitor has 3 modes: Scan, Auto, and Manual
- Monitor can be connected to a VCR/DVR using the A/V output port
- Color camera with sound activated alarm
- Adjustable delay/cycle time between cameras in Auto mode
- Both LCD monitor and camera can be wall or desk mounted

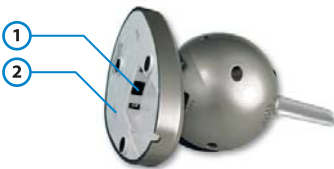
## THINGS TO CONSIDER BEFORE INSTALLATION

For optimal performance, follow these simple guidelines:

- For best transmission, ensure there are no thick walls or major obstructions between the camera and LCD monitor.
- Ensure there are no obstructions in the camera's view, to maximize viewing area. Examples: plants, toys, etc.

## INSTALLING THE CAMERA

1. Unpack the camera
2. Decide whether you want to wall mount or desk mount the camera. If you are wall mounting, there is a useful hole drilling guide included in the package. If wall mounting, the battery pack should not be used [battery pack sold separately(GX5I5B)].
3. If you are using the 9V camera power adapter, connect the power jack to the input on the base of the camera.



1. Connect power adapter here
2. Key holes for wall mounting

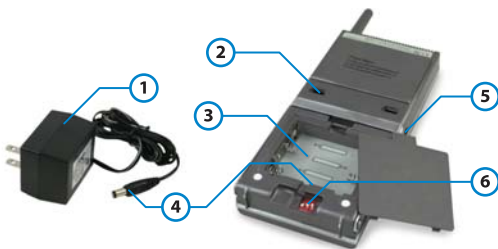
4. You can adjust the sensitivity for the sound alert feature by adjusting the sound trigger dial found beside the camera's antenna (explained further in Advanced Features)



1. Audio sensitivity dial
2. Night Vision Switch

5. The camera installation is now complete.

## INSTALLING THE LCD MONITOR



1. LCD monitor adapter
2. Key holes for wall mounting
3. Battery Compartment
4. Connect adapter to power jack  
(Located inside battery compartment)
5. Audio/Video output port
6. Channel activation

### Main Operation

1. Plug the monitor's power supply into the power jack located inside the battery compartment of the monitor. The monitor can also be operated using 4-AAA batteries. Note: It is recommended that you use the provided AC adapter to power the monitor. Batteries are recommended for portability and can last up to 200 minutes.
2. Turn on the monitor by pressing the power button on the top of the unit.
3. To connect the monitor to a VCR or DVR for recording purposes, use the RCA adapter cable and connect the appropriate end to the A/V output port on the monitor, and the other corresponding ends to the audio and video inputs of the VCR/DVR.

### Avoiding Interference

The 2.4 GHz video signals pass easily through your home's interior walls, but the signal may be reflected by power wires or plumbing inside the wall. If reception is poor, moving the camera or monitor may fix this problem. Houses with steel frames may experience interference as well. Microwave ovens, cordless phones and wireless routers are the most common sources of interference. Try to avoid mounting the monitor near these or other sources of RF interference.

## ADVANCED FEATURES

### Multi-Camera Operation

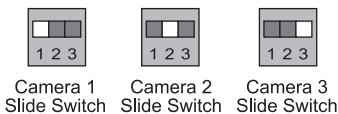
The GX5201 is designed to work with up to 3 cameras. Additional cameras are sold separately (indoor - GX515 / outdoor - GX522).

#### **IMPORTANT:**

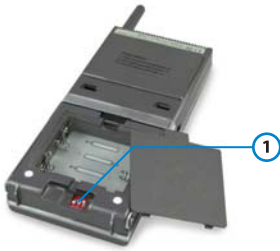
When using more than one camera, make sure each camera is assigned to a specific channel by assigning them different channels (1-3). The channel switch is located on the back of the camera.



#### 1. Camera channel selection



Accordingly the DIP switch located on the back of the monitor should be adjusted to reflect the channel in use.



1. Monitor channel activation



Camera 1  
In Use



Cameras  
1&2  
In Use



All Three  
Cameras  
In Use

## Night Vision

The camera includes 8 built-in IR LEDs, which allow viewing of up to 5 feet in the dark. To turn on the IR LEDs, use the small switch on the side of the camera. Switching it to the moon icon activates night vision, and switching it to the sun icon turns it off.



1. Night Vision LEDs

## Sound-Activated Alarm Feature

When the camera detects sound, an audio alert sounds on the monitor. To adjust the sound trigger sensitivity level, adjust the dial labeled trigger located beside the camera's antenna.

## Operating Modes

The system can be set to operate in one of 3 modes: SCAN, AUTO or MANUAL. The desired operating mode can be selected using the buttons on the front panel of the monitor.

### Scan

Pressing the SCAN button places the system in scan mode. The monitor's screen will go blank (standby mode) while the system continuously scans active cameras. If a camera detects sound above the preset sound trigger level, the monitor will display the camera's picture and the beeper will sound. Four minutes after the last detection, the screen returns to standby mode and the LCD monitor resumes scanning. Press the MANUAL or AUTO button to cancel this mode.

### Auto

Pressing the AUTO button places the system into auto mode. In this mode, the system automatically rotates through all active cameras. When a camera detects sound above

the preset level, the monitor will display the picture from that camera for a few seconds, and the beeper will sound. To avoid searching the channels that do not have cameras/transmitters assigned to them, set those corresponding dip switches (located on the back panel of the monitor) to the OFF position.

The dwell/cycle time (time taken to switch between cameras) is preset to four seconds and can be adjusted between 2-30 seconds. To adjust the dwell/cycle time, hold down both the AUTO and MANUAL buttons simultaneously. The monitor will chime for each second it is adding to the dwell time. Release the buttons, and the LED light will flash for each second that was added to the dwell time. Increasing the dwell/cycle time past 30 seconds will revert it back to 2 seconds.

## Manual

To view a specific camera on the monitor, press the MANUAL button. The monitor will switch to a different camera each time the MANUAL button is pressed. To avoid searching the channels that do not have cameras assigned to them, set those corresponding dip switches (located on the back panel of the monitor) to the OFF position.

## MONITOR FUNCTIONS



1. Volume Button
2. Alarm Volume Adjustment
3. Power Button
4. Menu + Button
5. Main Menu Button
6. Menu - Button
7. Scan Button
8. Auto Button
9. Manual Button

### Power

- Press to turn the monitor on/off

### Alarm Volume

- The ALARM VOLUME of the monitor can be changed by adjusting the Alarm Volume Tuner located on the top of the monitor.

### Volume

- The sound level can be adjusted by pressing the + or - buttons on the front of the monitor.

### Menu

- Press the Menu button to get the following options:
- LED on, adjust brightness using + or -
- LED flashing, adjust color using + or -
- LED off, adjust contrast using + or -

## TROUBLESHOOTING

If you are having trouble operating this product, please consult the guide below:

Symptom	Remedies
No camera Picture	<ol style="list-style-type: none"> <li>1. Check all connections and AC adapters. Make sure camera(s) and monitor are switched ON.</li> <li>2. Ensure camera(s) and monitor are set to correct channels.</li> <li>3. Make sure camera is within range of the monitor.</li> </ol>
Blank Monitor	<ol style="list-style-type: none"> <li>1. Make sure the monitor is switched ON.</li> <li>2. If using the AC adapter, make sure it is plugged in.</li> <li>3. Make sure the rechargeable battery is charged.</li> <li>4. Make sure the camera's AAA batteries are charged.</li> </ol>
Interference on Camera Picture	<ol style="list-style-type: none"> <li>1. Make sure each camera is within range, and that no obstructions are blocking the signal.</li> <li>2. Try repositioning the camera, monitor, or both to improve the reception quality.</li> <li>3. Reposition other nearby equipment transmitting on the 2.4 GHz frequency.</li> </ol>
Audio problems	<ol style="list-style-type: none"> <li>1. Ensure the volume is turned up sufficiently on the monitor.</li> <li>2. Make sure the sound is within the microphone range.</li> <li>3. If the unit emits a loud wailing sound (feedback), try moving the camera away from the monitor or angle the Monitor differently.</li> </ol>



## SPECIFICATIONS

Camera	TV System Integrated Lens Resolution Signal/Noise Ratio Image Sensor Min. Illumination Current Consumption Frequency Range Modulation Channel Selection Overall Size	NTSC or PAL standard 5.6 mm, fixed focus 360 horizontal TV lines 48dB 1/3" CMOS 0.1 lux 150 mA 2.41~2.47 GHz FM Electronic tuning with PLL 4.25" x 3.75" x 2.5"
Monitor	Frequency Range Current Consumption Channel Selection Signal/Noise Ratio Overall Size	2.41~2.47 GHz 350 mA Electronic tuning with PLL 38dB 7.25" x 2.75" x 1"
Battery (for monitor)	Voltage Alkaline Battery	4 AAA alkaline approx. 1 hr. continuous (Optional) > 8 hours standby
General	Operating Temperature Humidity	14°F to 104°F Less than 85%

## APPROVALS

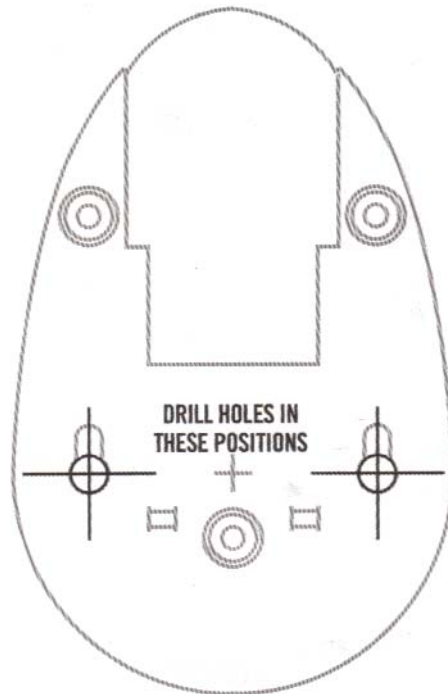
This device complies with part 15 of the FCC rules. Operation is subject to the following two conditions:

- \* This device may not cause harmful interference.
- \* This device must accept any interference received, including interference that may cause undesired operation.

CE directive 95/5/EEC, EMC directive 89/336/EEC, LV directive 73/23/EEC.  
This class B digital apparatus complies with Canadian ICES-003.

## DRILLING TEMPLATE

To wall mount the camera, drill two holes using a 1/4" drill bit and the template below. Insert supplied wall anchors into holes and secure camera to wall with supplied screws.



# GX515B

## Rechargeable 9V Battery Pack



For ultimate portability look for the GX515B rechargeable battery pack that provides up to 4 hours of continuous use. The GX515B easily attaches to the bottom of the GX515 camera for a completely wireless surveillance system. *(Not included with the GX5201)*

**Visit [www.svat.com](http://www.svat.com) for more information  
on the GX515B Battery Pack**



[www.svat.com](http://www.svat.com)

**Disclaimer**

SVAT does not endorse any of SVAT products for any illegal activities. SVAT is not responsible or liable in any way shape or form for any damage, vandalism, theft or any other action that may occur while a SVAT product is in use by the purchaser.



GigaXtreme

Model #  
GX5201  
[www.svat.com](http://www.svat.com)

## Free Manuals Download Website

<http://myh66.com>

<http://usermanuals.us>

<http://www.somanuals.com>

<http://www.4manuals.cc>

<http://www.manual-lib.com>

<http://www.404manual.com>

<http://www.luxmanual.com>

<http://aubethermostatmanual.com>

Golf course search by state

<http://golfingnear.com>

Email search by domain

<http://emailbydomain.com>

Auto manuals search

<http://auto.somanuals.com>

TV manuals search

<http://tv.somanuals.com>