

# SD DVR With Outdoor Night Vision Camera

COMPLETE SYSTEM



## Instruction Manual



Model #  
CV1010DVR  
[www.svat.com](http://www.svat.com)



# PRODUCT WARRANTY & REGISTRATION

Please visit our website at [www.svat.com](http://www.svat.com) to apply for your products warranty registration.

*The warranty registration for is located under the support tab on the SVAT website.*

We take quality very seriously. This is why all of our products come with a one year warranty from the original purchase date against defects in workmanship and materials.

If you have warranty or support issues please contact us using any of the following methods:


**SVAT Electronics USA**  
2315 Whirlpool St., Unit 333  
Niagara Falls, New York  
USA 14305

**SVAT Electronics Canada**  
4080 Montrose Road  
Niagara Falls, ON  
Canada L2H 1J9


**Phone: 866.946.7828**  
**Fax: 888.771.1701**  
**Email: [support@svat.com](mailto:support@svat.com)**  
**Website: [www.svat.com](http://www.svat.com)**

## Warranty Terms

- SVAT products are guaranteed for a period of one year from the date of purchase against defects in workmanship and materials. This warranty is limited to the repair, replacement or refund of the purchase price at SVAT's option.
- When service is required, the warranty is validated by the submission of a fully completed warranty card.
- This warranty becomes void if the product shows evidence of having been misused, mishandled or tampered with contrary to the applicable instruction manual.
- Routine cleaning, normal cosmetic and mechanical wear and tear are not covered under the terms of this warranty.
- The warranty expressly provided for herein is the sole warranty provided in connection with the product itself and no other warranty, expressed or implied is provided. SVAT assumes no responsibilities for any other claims not specifically mentioned in this warranty.
- This warranty does not cover the shipping cost, insurance or any other incidental charges.
- You MUST call SVAT before sending any product back for repair. You will be given a Return Authorization number. When returning the product for warranty service, please pack it carefully in the original box with all supplied accessories, and enclose your original receipt or copy, and a brief explanation of the problem (include RA #).
- This warranty is valid only in Canada and the U.S.A.
- This warranty card cannot be re-issued.



**CAUTION**  
**RISK OF ELECTRIC SHOCK, DO NOT OPEN**



**TO REDUCE THE RISK OF ELECTRIC SHOCK, DO NOT REMOVE THE COVER (BACK).  
NO USER SERVICEABLE PARTS INSIDE. REFER SERVICING TO  
QUALIFIED SERVICE PERSONNEL.**

## Graphic Symbol Explanation:



The lightning flash with arrowhead symbol, within an equilateral triangle, is intended to alert the user to the presence of uninsulated "dangerous voltage" within the product's enclosure that may be of sufficient magnitude to constitute a risk of electric shock to persons.



The exclamation point within an equilateral triangle is intended to alert the user to the presence of important operating maintenance (servicing) instructions in the literature accompanying the appliance.

**WARNING: TO PREVENT FIRE OR SHOCK HAZARDS, DO NOT EXPOSE THIS UNIT TO RAIN OR MOISTURE**

# TABLE OF CONTENTS

WHAT IS INCLUDED .....	1
WHAT IS COMPATIBLE .....	1
SYSTEM BUTTONS & CONNECTIONS .....	2
SYSTEM INSTALLATION .....	3-6
DELETING PICTURES & AVI .....	6
MAINTENANCE .....	6
TROUBLESHOOTING .....	7
SPECIFICATIONS .....	8-9

## WHAT IS INCLUDED



1 SD DVR



1 Color Camera



Camera Mount



60ft Extension Wire



RCA to RCA  
(male) wire



512MB SD Card

- 2 Window Warning Stickers
- Mounting Hardware
- 1 Year Warranty
- Instruction Manual
- Online/Toll Free Tech Support

## WHAT IS COMPATIBLE

The CV1010DVR is compatible with TVs, VCRs, DVRs, computers and other SVAT systems including:



CV1011C



CV65



CV31/CV32



CMOSCO



CCDCO

## OPTIONAL ACCESSORY

Extra camera - Turn your DVR into a two camera system. (model: CV1011C)

## SYSTEM BUTTONS & CONNECTIONS

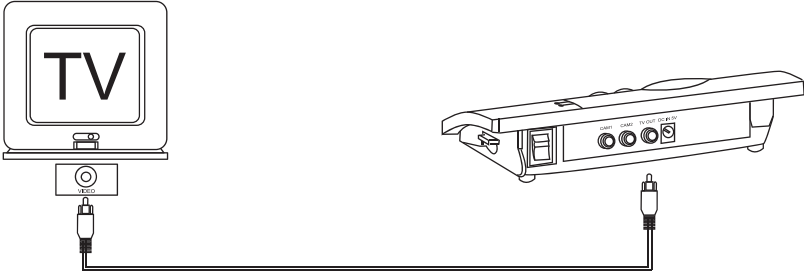


1. **SD Card Slot**  
Supports up to a 2GB SD Card.
2. **Navigation Buttons**  
Up Button: toggles motion detect recording on or off while in Live Mode. Moves the cursor up when navigating menus.  
Right Button: moves the cursor right when navigating menus.  
Down Button: toggles between still image capture and movie capture while in Live Mode. Moves the cursor down when navigating menus.  
Left Button: moves the cursor left when navigating menus.
3. **OK Button**  
Confirms your selection on menu screens.
4. **Play**  
Enters playback mode and toggles between full screen view, thumbnail view, and file view.
5. **Quickshot**  
Takes a still image snapshot or 10 second video clip. Allows you to delete files when in playback mode.
6. **Menu Button**  
Enters and exits the menu screen.
7. **Monitor Button**  
Switches between monitoring modes (full screen; picture-in-picture).
8. **Motion Detection LED**  
Lights up when motion detection mode is active.
9. **Video Mode LED**  
Lights up when Video Mode is active.
10. **Power LED**  
Lights up when DVR is active.
11. **Connection to Extension Wire**  
Extension Wire converts to camera RCA.
12. **CDS Sensor**  
Automatically turns on the IR LEDs when it gets dark.
13. **Camera Lens**  
Color camera lens.
14. **Infrared (IR) LEDs**  
Allows the camera to see in the dark.
15. **Sun Shield**  
Helps prevent glare from bright lights.
16. **Mounting Bracket**  
Allows you to mount camera on walls and ceilings.
17. **Power Switch**  
Turns the DVR ON and OFF.
18. **RCA Inputs**  
Connects your camera(s) to the DVR.
19. **Video Out**  
Sends video to your display.
20. **DC In**  
Connects the power supply to the DVR.

# SYSTEM INSTALLATION

## 1. CONNECTING TO TV

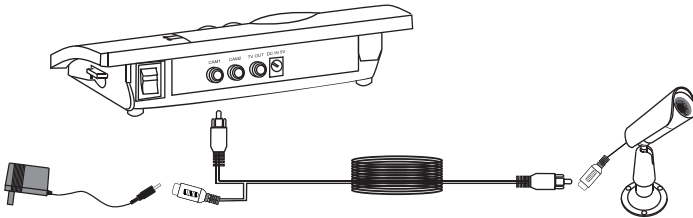
Connect one end of the RCA wire to the video input port of your TV. Connect the other end to the Video Out port of the DVR. Set your TV to the video input channel.



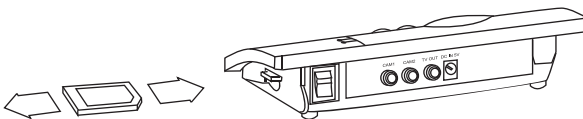
## 2. CONNECTING TO CAMERA

Connect the camera to the 4 pin din extension wire. Connect the DC input end of the wire to the power adapter. Connect the RCA end of the wire to the CH1 input on the DVR. Plug in the power adapter.

If connecting an additional camera (optional accessory), repeat the steps above but connect it to the CH2 input on the DVR.



## 3. INSERT SD CARD



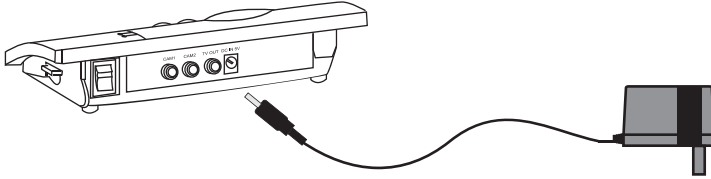
### Note:

1) The recorder can work without the SD card and the images will be stored in the internal temporary SDRAM or Flash memory. However, those captured images will be deleted after power off. The temporary SDRAM can store about 50 pictures or 5 videos. Storing your pictures/video on an SD card is highly recommended.

2) Do not remove the SD card while in recording mode; it may damage the memory card and image data.

#### 4. POWER SUPPLY

Plug in the DVR's power adapter and switch the unit on. Make sure your TV is set the video input channel to view your DVR.



#### 5. SETTING TIME AND DATE

The recorder has an on-screen clock that will print the date and time on recorded images when movement is detected.


a) Press the MENU button to enter the setup page



b) Select this icon and press the OK button. Use the UP, DOWN, LEFT, and RIGHT buttons to adjust the date and time. Note: The programmed time and date can only keep 12 hours when the power adapter is unplugged.

#### 6. SETTING MOTION DETECTION ON/OFF

a) Press the MENU button to enter setup page

b) Select this icon  and press OK button to switch motion detection ON or OFF

**Note:** The UP button also functions as a direct access for setting motion detection mode on and off. Press it in monitoring mode to activate/deactivate motion detection.

#### 7. SETTING CAPTURE FORMAT PHOTO/AVI

a) Press the MENU button to enter setup page



b) Select this icon and press OK to switch capture format PHOTO or AVI

**Note:** The DOWN button also functions as a direct access for selecting the capture format of photo or AVI. Press it in monitoring mode to toggle photo/AVI formats.

## 9. RECORD MODE

You can either switch MOTION DETECTION ON in the setup page or press the UP button as a quick access button to turn MOTION DETECTION ON when the recorder is in monitoring mode. Press the UP button again to turn MOTION DETECTION OFF.

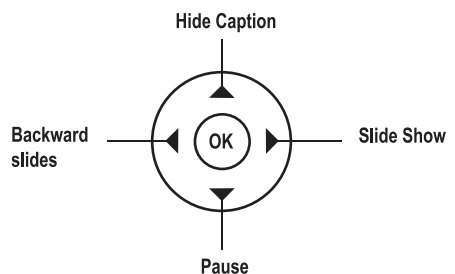
Note: By default, motion detection mode will be activated every time the power is switched on.

1. When motion detect is ON, it will enter self-learning mode (the upper-left icon will keep flashing automatically for about 60 seconds). The self-learning mode means the software will learn the current camera status to minimize false triggering. The recorder will enter self-learning mode every time when you turn MOTION DETECTION ON
2. Don't walk through the detection area when in self-learning mode because it will lower the detection sensitivity. When it triggers, the icon will become green and record a picture (.jpg format) or a video (.avi format) depending on your capture settings.
3. This DVR will only record one channel at a time, and will not record in picture-in-picture mode. Do not program motion detection while in picture-in-picture mode.
4. In order to prevent and avoid false triggers, we recommend:
  - a) Do not aim camera at the sun light
  - b) Aim camera away from constant moving objects
  - c) Avoid mirror and reflected light from bright surfaces
  - d) Avoid areas which have shadow variation
5. When aiming the camera, bright areas will be more sensitive than dark areas.
6. When memory is full, the movie mode icon will become RED in color and your old footage will be overwritten with new footage.
7. The pictures stored on the SD card cannot be displayed on most digital cameras.

## 10. PLAY MODES

1. Auto full screen review:

Press the PLAY button to enter single-picture review page. Pressing the RIGHT button once will enter Slide Show Mode, and will cycle through your pictures/video. Press the LEFT button to go to the previous picture/video. Press the UP button to hide the captions, and press the DOWN button to pause the present picture or video clip.



2. Six Frame Preview:

Press the PLAY button again to enter Six Frame Preview. Use UP, DOWN, RIGHT and LEFT to select the picture you wish to review, and press OK to view it in full screen. Press PLAY again to return to Six Frame Preview mode.

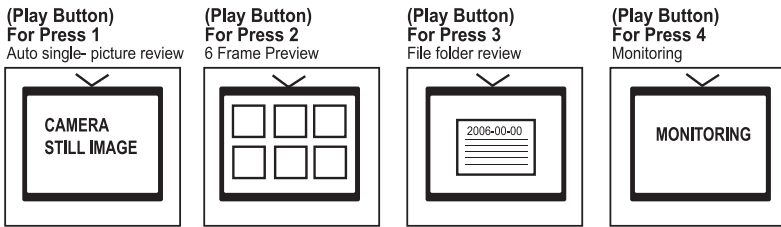
3. File folders review:

When the recorder is in Six Frame Preview mode, press PLAY to enter the file folders review page. Use the UP and DOWN buttons to select the folder you want to review and then press OK.



#### 4. Monitoring Mode

Press the play button a fourth time to return to monitoring.



## DELETE SINGLE PICTURE / AVI / FOLDERS

1) Press the PLAY button to enter single-picture review page. Pressing the RIGHT or LEFT buttons once will enter Slide Show Mode and will cycle through the pictures automatically. Press the LEFT or RIGHT button again to stop and stay at the picture you want to delete. Then press QUICK SHOT button, select YES and press OK button to delete.

2) When the recorder is in single photo review page, press PLAY to enter picture review page and PLAY again to enter the file folders review page. Press the UP or DOWN arrows button to select the file folder you want to delete. Then press the QUICK SHOT button, select YES and press OK to delete.

**Note:** It may take a while to process when deleting folders if there are many photo/AVI files in the folders.

## DELETE ALL PHOTOS AND AVI / FORMAT MEMORY CARD

Press the PLAY button to enter single-photo review page, and press PLAY to enter photo review page. When the recorder is in photo review page, press PLAY to enter file folders review page. Press the MENU button, select YES and press OK to delete all photos and AVI.

**Note:** When you are in setup or Pictures /AVI/file folders review page, the recorder will return to standby or motion detection status automatically after 3 minutes if no functional keys are pressed.

## MAINTENANCE

Do not use any carboxylic cleaning agents or petrol, alcohol or similar. These attack the surfaces of the devices. Besides, the vapors are hazardous to your health and explosive. Do not use any sharp edged tools, screw drivers, metal brushes or similar for cleaning. The devices are maintenance-free, so never disassemble them. The guarantee becomes void when you disassembled the appliance. Only clean the outside of the devices with a soft, dry cloth or a brush. Prior to cleaning, remove the devices from all voltage sources.

# TROUBLESHOOTING

Problem	Solution
No image	<ol style="list-style-type: none"> <li>1. Check the power cord and ensure that the power switch is on.</li> <li>2. Check all cable connections.</li> <li>3. Make sure your TV is set to the video input channel. Normally, this channel can be reached by pressing the VIDEO or INPUT button on your TV remote.</li> </ol>
The image is distorted	<ol style="list-style-type: none"> <li>1. Ensure that there are no loose connections.</li> </ol>
Recording disabled/ No file is stored	<ol style="list-style-type: none"> <li>1. The front side of SD card must face up.</li> <li>2. Make sure the SD card is fully inserted.</li> <li>3. SD card damaged.</li> <li>4. SD card write-in lock. Flip the switch on the SD card to enable write mode.</li> <li>5. Make sure your SD card is not SDHC, as this device is not SDHC compatible.</li> </ol>
Flickering/running/ B/W image	<ol style="list-style-type: none"> <li>1. Strong spotlight in the cover range of the camera.</li> </ol>
Keys out of Function	<ol style="list-style-type: none"> <li>1. Switch off recorder and turn on after 5 secs later to reset the program</li> </ol>

# SPECIFICATIONS

## INDOOR DVR

Functionality .....	Simplex
Video Compression .....	JPEG
Resolution .....	Still Picture: 640 x 480 Video: 320 x 240
Recording Frame Rate .....	5 FPS
Recording Time .....	Up to 2.25 Hours w/ Included 512MB Card Up to 9 Hours w/ 2GB SD Card
Recording Modes .....	Self-Learning Motion Detection / Manual
Recording Method .....	Each, Picture-in-Picture
Recording Media .....	512MB SD Card (included)
Video Format .....	NTSC
Video Loss .....	N/A
Video Inputs .....	2CH RCA
Video Display Output .....	1CH RCA
Live Viewing .....	Single Screen, Picture-in-Picture
Live Frame Rate .....	5 FPS
Play Search Mode .....	By Time and Date
Play Speed .....	Forward, Backward
Play Mode .....	Each, Picture in Picture
OSD and System Menu Display .....	Yes
OSD Language Display .....	English
Time and Date Stamp Display .....	Yes
Password Protection .....	No
Disk Full Warning .....	Yes
Automatic Overwrite .....	Yes
LED Indicators .....	Yes
Housing Material .....	ABS Plastic
Housing Color .....	Pure White
Power Input .....	DC 5V
Power Adapter Input .....	AC 100 ~ 240V 50/60Hz
Cooling .....	Cooling Panel
Operating Temperature .....	32°F ~ 104°F
Operating Humidity .....	80%
Dimensions .....	8.25" x 5.25" x 1.75"
Weight .....	0.5lbs

**OUTDOOR CAMERA**

Camera Type .....	Bullet
Image Sensor .....	1/3" CMOS Color
Resolution .....	330 TV Lines
Outdoor Use .....	Yes
IP Rating .....	IP44
Focal Length .....	6mm
Focus Type .....	Fixed
Night Vision .....	Yes
Number of IR LEDs and Range .....	11, up to 15ft
IR LED Control .....	Automatic, CDS Sensor
Min. Illumination .....	0 lux
IR Wavelength .....	850nm
Video Output .....	RCA
TV System .....	NTSC
Microphone .....	Yes, Built-in
Motion Detection .....	No
Viewing Angle .....	53 Degrees
Electronic Shutter .....	1/60~1/15000 sec
BLC .....	N/A
AGC .....	N/A
ELC .....	N/A
Line Lock .....	N/A
Iris Control .....	N/A
White Balance .....	Yes
Sun Shield .....	Yes
IR Cut Filter .....	Yes
Housing Material .....	ABS Plastic
Housing Color .....	Pure White
Signal/Noise Ratio .....	>48dB
Camera Bracket .....	Yes
Operating Temperature .....	-14°F ~ 122°F
Operating Humidity .....	95%
Camera Power Input .....	DC 7.5V 300mA
Power Adapter Input .....	AC 120V 60Hz
LED Power Indicator .....	No
Dimensions .....	4.25" x 1.125" x 1.25"
Weight .....	0.15lbs

## SVAT SUPPORTS CRIME STOPPERS

Crime Stoppers programs are operated as non-profit charities and are managed by a volunteer board of directors who raise funds and pay rewards to individuals who anonymously call with information that helps solve crime.

Rewards are paid for tips that lead to the arrest and indictment of people charged with felony offenses, and to date Crime Stoppers statistics show a conviction rate of approximately 95%.

To receive more information about Crime Stoppers or to make a charitable donation please fill in the fields on the back of this page, cut on the dotted line and mail in.



### **CRIME STOPPERS INTERNATIONAL**

P.O. Box 614  
Arlington, Texas  
U.S.A 76004-0614

## SVAT SUPPORTS CRIME STOPPERS

To receive more information about Crime Stoppers or to make a charitable donation please fill in the fields below, cut on the dotted line and mail in.



### CRIME STOPPERS INTERNATIONAL

Crime Stoppers International is an organization of community based civilian Crime Stoppers programs, which assist police in solving crime. You can find more information about Crime Stoppers at [www.c-s-i.org](http://www.c-s-i.org)

Local Crime Stoppers programs are partnerships between the public, media and local policing organizations. Each program is run by a citizen board, whose purpose is to advertise a local telephone number, which anonymous persons can call with information regarding a crime. Callers (tipsters) may be eligible for a cash reward for their information.

If your community does not have a Crime Stoppers program and would like information about starting one, return this card with the following information.

NAME: \_\_\_\_\_ PHONE: \_\_\_\_\_

ADDRESS: \_\_\_\_\_ CITY: \_\_\_\_\_

PROV/STATE: \_\_\_\_\_ COUNTRY: \_\_\_\_\_ POSTAL/ZIP CODE: \_\_\_\_\_

E-MAIL ADDRESS: \_\_\_\_\_

Charitable donations can be made to "CSI" by returning this card in an envelope with your check or money order to the address on the other side.

**THANK YOU**

Amount \$ \_\_\_\_\_





**[www.svat.com](http://www.svat.com)**

### **Disclaimer**

SVAT does not endorse any of SVAT products for any illegal activities. SVAT is not responsible or liable in any way shape or form for any damage, vandalism, theft or any other action that may occur while a SVAT product is in use by the purchaser.



**Model #**  
**CV1010DVR**  
[www.svat.com](http://www.svat.com)



## Free Manuals Download Website

<http://myh66.com>

<http://usermanuals.us>

<http://www.somanuals.com>

<http://www.4manuals.cc>

<http://www.manual-lib.com>

<http://www.404manual.com>

<http://www.luxmanual.com>

<http://aubethermostatmanual.com>

Golf course search by state

<http://golfingnear.com>

Email search by domain

<http://emailbydomain.com>

Auto manuals search

<http://auto.somanuals.com>

TV manuals search

<http://tv.somanuals.com>