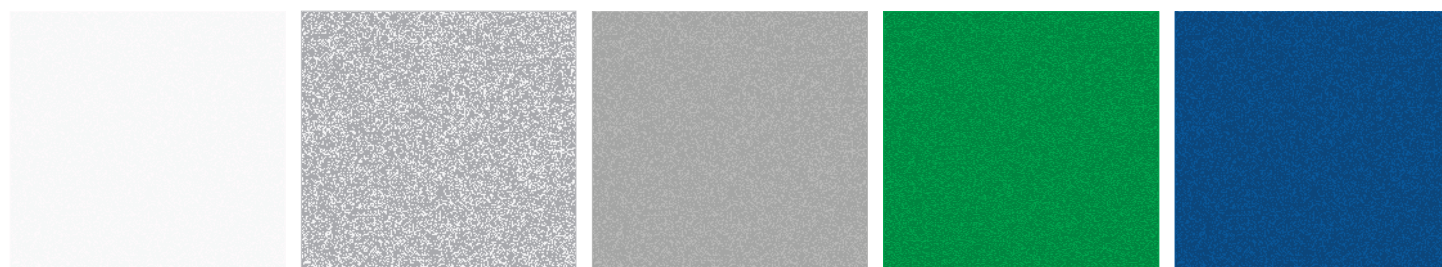
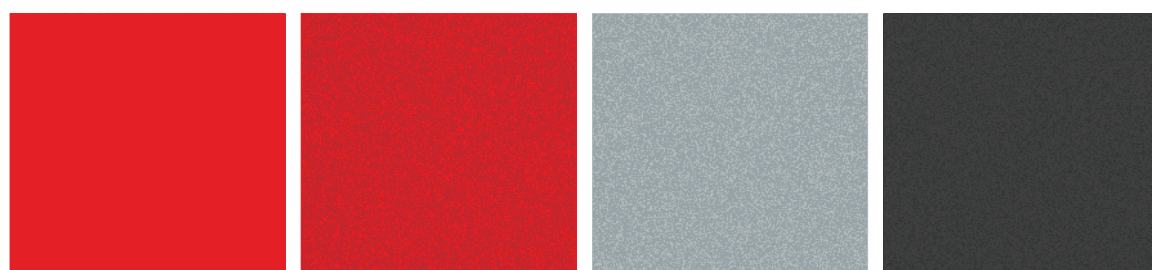


## Paint

### Exterior

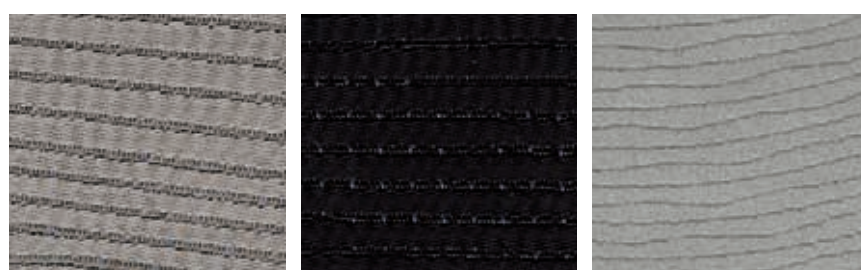


Satin White Pearl    Spark Silver Metallic    Steel Silver Metallic    Sage Green Metallic    Newport Blue Pearl

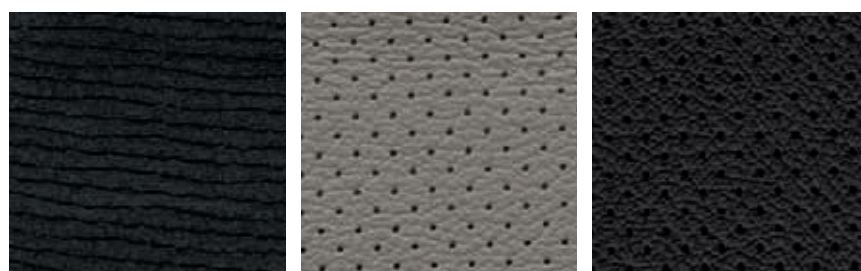


Paprika Red Pearl    Camellia Red Pearl    Dark Gray Metallic    Obsidian Black Pearl

### Upholstery



Aurora Platinum Cloth (APC)    Aurora Black Cloth (ABC)    Platinum Dune Cloth (PDC)



Black Dune Cloth (BDC)    Platinum Leather (PL)    Black Leather (BL)

## Forester Color Combinations

PAINT	2.5X and 2.5X Premium	2.5XT Premium	2.5X Limited and 2.5XT Limited
Satin White Pearl	APC	PDC	PL
Spark Silver Metallic	ABC	BDC	BL
Steel Silver Metallic	APC	PDC	PL
Sage Green Metallic	APC	PDC	PL
Newport Blue Pearl	APC	PDC	PL
Paprika Red Pearl	ABC	BDC	BL
Camellia Red Pearl	APC	PDC	PL
Dark Gray Metallic	APC	PDC	PL
Obsidian Black Pearl	ABC	BDC	BL

## Forester® Specifications

ENGINE AND DRIVETRAIN	2.5X, 2.5X Premium and 2.5X Limited	2.5XT Premium and 2.5XT Limited
Engine	2.5-liter SOHC aluminum-alloy 16-valve horizontally opposed SUBARU BOXER® engine with I-Active Valve Lift System.	2.5-liter DOHC intercooled, turbocharged aluminum-alloy 16-valve 4-cylinder horizontally opposed SUBARU BOXER engine with Active Valve Control System.
Power	170 hp @ 6,000 rpm	224 hp @ 5,200 rpm
Torque	170 lb-ft @ 4,400 rpm	226 lb-ft @ 2,800 rpm
Manual transmission	Fully synchronized 5-speed manual with Incline Start Assist. <b>2.5X and 2.5X Premium:</b> Standard. <b>2.5X Limited, 2.5XT Premium and 2.5XT Limited:</b> Not available.	
Automatic transmission	4-speed electronic direct-control automatic with SPORTSHIFT® manual control. <b>2.5X and 2.5X Premium:</b> Optional. <b>2.5X Limited, 2.5XT Premium and 2.5XT Limited:</b> Standard.	
CA Emissions	SULEV (PZEV) <sup>1</sup> and LEV2	
Towing capacity	2,400 lbs	
FUEL		
Fuel economy (city/highway) <sup>2</sup>	20/26 mpg	19/24 mpg
Fuel requirement	Unleaded gasoline (87 octane)	Premium unleaded gasoline (91 octane)
SYMMETRICAL AWD		
Continuous All-Wheel Drive	Models equipped with 5-speed manual transmission utilize a viscous-type locking center differential with torque distribution normally configured at a 50/50-split front-to-rear. If wheel speed differs between front and rear axles, the system helps distribute power to the wheels with the most traction.	
Active All-Wheel Drive	Models equipped with 4-speed automatic transmission utilize an electronically controlled variable transfer clutch to distribute power to where traction is needed. Sensors monitor parameters such as wheel slippage, throttle position and braking, to help determine torque distribution and direct it to the wheels with optimum traction.	
STABILITY AND TRACTION		
Vehicle Dynamics Control (VDC)	Standard VDC electronic stability control utilizes sensors which constantly monitor wheel speeds, steering angle, brake pressure, vehicle yaw rate and lateral g-forces. If VDC detects a difference between the driver's intended path and the one the vehicle is actually taking, VDC applies braking power and/or reduces engine torque to help correct vehicle path.	
Traction Control System (TCS)	VDC also incorporates an all-wheel, all-speed traction control system which senses a loss of traction and applies braking force to the slipping wheel or wheels as necessary to maintain vehicle motion.	
CHASSIS		
Steering	Engine-speed-sensing variable power-assisted rack-and-pinion. Turning circle: 34.4 feet.	
Suspension	4-wheel independent suspension. <b>Front:</b> Strut-type with lower L-arm. Stabilizer bar. <b>Rear:</b> Double wishbone. Stabilizer bar.	
Brakes	4-wheel disc, ventilated front. 4-channel, 4-sensor ABS with Electronic Brake-force Distribution (EBD).	
Brake Assist	When emergency braking is detected by how quickly the brake pedal is pressed, maximum brake pressure is immediately applied.	
WHEELS AND TIRES		
Wheels	<b>2.5X:</b> 16 x 6.5-inch steel with wheel covers <b>2.5X Premium and 2.5X Limited:</b> 17 x 7.0-inch 5-spoke aluminum alloy	17 x 7.0-inch 5-spoke aluminum alloy
Tires	<b>2.5X:</b> 215/65 R16 96H all-season <b>2.5X Premium and 2.5X Limited:</b> 225/55 R17 95H all-season	225/55 R17 95H all-season
EXTERIOR DIMENSIONS		
Length	179.5 inches	179.5 inches
Width	70.1 inches	70.1 inches
Height	66.9 inches with roof rails (65.9 inches without roof rails)	66.9 inches with roof rails
Wheelbase	103.0 inches	103.0 inches
Track (front/rear)	60.2 inches/60.2 inches	60.2 inches/60.2 inches
Base curb weight (manual/automatic)	<b>2.5X:</b> 3,250 lbs/3,300 lbs   <b>2.5X Premium:</b> 3,300 lbs/3,340 lbs <b>2.5X Limited:</b> N/A/3,360 lbs	<b>2.5XT Premium:</b> N/A/3,440 lbs   <b>2.5XT Limited:</b> N/A/3,460 lbs
Ground clearance (at base curb weight)	8.7 inches	8.9 inches
INTERIOR DIMENSIONS		
Headroom (front/rear)	41.6 inches/40.4 inches (with moonroof: 40.0 inches/37.7 inches)	40.0 inches/37.7 inches
Legroom (front/rear)	43.1 inches/38.0 inches	43.1 inches/38.0 inches
Shoulder room (front/rear)	56.1 inches/55.6 inches	56.1 inches/55.6 inches
Passenger volume	107.6 cubic feet (with moonroof: 102.1 cubic feet)	102.1 cubic feet
Cargo volume	33.5 cubic feet (with moonroof: 30.8 cubic feet)	30.8 cubic feet
Maximum cargo volume	68.3 cubic feet with rear seat lowered (with moonroof: 63.0 cubic feet)	63.0 cubic feet with rear seat lowered

# Forester® Specifications

EXTERIOR	2.5X	2.5X Premium	2.5X Limited	2.5XT Premium	2.5XT Limited
Multireflector halogen headlights	●	●	●	●	●
Foglights	-	-	●	●	●
Functional hood scoop (feeds turbocharger intercooler)	-	-	-	●	●
Rear spoiler	-	-	-	●	●
Black side mirrors	●	-	-	-	-
Body-color side mirrors	-	●	●	●	●
Black door handles	●	-	-	-	-
Chrome door handles	-	●	●	●	●
2-speed windshield wipers with variable intermittent mode and mist feature	●	●	●	●	●
Windshield wiper de-icer and heated side mirrors	-	○ <sup>3</sup>	●	-	●
Single-speed rear window wiper with fixed intermittent mode	●	●	●	●	●
Raised roof rails	-	●	●	●	●
Panoramic moonroof	-	●	●	●	●
Rear privacy glass	-	●	●	●	●

## SEATING AND TRIM

6-way manually adjustable driver's seat. 4-way manually adjustable front-passenger's seat.	●	-	-	●	-
10-way power adjustable driver's seat with power adjustable lumbar support. 4-way manually adjustable front-passenger's seat.	-	●	●	-	●
Heated front seats	-	○ <sup>3</sup>	●	-	●
Reclining rear seats	-	●	●	●	●
60/40-split flat-folding rear seatback	●	●	●	●	●
Rear center armrest	●	●	●	●	●
Leather-wrapped steering wheel and shifter handle	-	-	●	-	●
Cloth upholstery	●	●	-	●	-
Leather-trimmed upholstery	-	-	●	-	●
Aluminum-alloy pedal covers	-	-	-	●	●
Silver metallic trim on dash and console	●	●	●	●	●

## CONVENIENCE FEATURES

Power front and rear windows with driver's auto-down	●	●	●	●	●
Power side mirrors	●	●	●	●	●
Electronic cruise control	●	●	●	●	●
3-spoke steering wheel with cruise control buttons	●	-	-	-	-
3-spoke steering wheel with audio system and cruise control buttons	-	●	●	●	●
Manually adjustable tilt steering column	●	●	●	-	-
Manually adjustable tilt/telescoping steering column	-	-	-	●	●
Single bottle holder in each door panel	●	●	●	●	●
Overhead console with dual maplights and sunglasses storage	●	●	●	●	●
Sun visors with concealed vanity mirrors	●	●	●	●	●
Multifunction center console with detachable pocket and partition, sliding armrest, dual cup holders and 12-volt power outlets	●	●	●	●	●
Automatic ambient lighting of center console area	●	●	●	●	●
In-dash illuminated storage tray	●	●	●	●	●
Retractable rear tray with dual cup holders	-	●	●	●	●
Cargo-area with 2 grocery bag hooks, 4 tiedown hooks and 2 upper utility hooks	●	●	●	●	●
Cargo-area underfloor storage	●	●	●	●	●
Removable cargo-area tray	-	-	●	-	-

## INSTRUMENTATION

Analog speedometer, tachometer and fuel gauges	●	●	●	●	●
Digital odometer and automatic transmission shift position indicator (when equipped)	●	●	●	●	●
Digital trip computer displaying average fuel economy, clock and ambient temperature	●	●	●	●	●

## AUDIO SYSTEMS

4-speaker audio system with single-disc in-dash CD player and MP3/WMA capability	●	●	-	-	-
6-speaker audio system with 6-disc in-dash CD changer and MP3/WMA capability	-	-	●	●	●
Auxiliary audio jack	●	●	●	●	●
XM® or SIRIUS® Satellite Radio capability <sup>4</sup>	●	●	●	●	●

## CLIMATE CONTROL

	2.5X	2.5X Premium	2.5X Limited	2.5XT Premium	2.5XT Limited
Manually adjustable CFC-free air conditioning system with air filtration, rotary controls for temperature, fan and airflow direction	●	●	-	●	-
Automatic climate control system with CFC-free air conditioning, air filtration, rotary controls for temperature, fan and airflow direction	-	-	●	-	●

## SECURITY

Keyless entry system with answer-back electronic chirp	●	●	●	●	●
Antitheft security system	●	●	●	●	●
Engine immobilizer	●	●	●	●	●

## SAFETY

### ACTIVE

Subaru Symmetrical All-Wheel Drive (AWD)	●	●	●	●	●
Vehicle Dynamics Control (VDC)	●	●	●	●	●
SUBARU BOXER engine	●	●	●	●	●
4-wheel antilock braking system (ABS) with Electronic Brake-force Distribution (EBD)	●	●	●	●	●
Brake Assist	●	●	●	●	●
Daytime Running Lights (DRL)	●	●	●	●	●

### PASSIVE

Driver's and front-passenger's front airbags (SRS) <sup>5</sup>	●	●	●	●	●
Subaru advanced frontal airbag system <sup>5</sup>	●	●	●	●	●
Side-curtain airbags protecting front and rear outboard occupants (SRS) <sup>5</sup>	●	●	●	●	●
Rollover sensor	●	●	●	●	●
Front-seat-mounted front side-impact airbags (SRS) <sup>5</sup>	●	●	●	●	●
Height-adjustable active front-seat head restraints	●	●	●	●	●
Height-adjustable 3-point front seatbelts with pretensioners and force limiters. 3-point seatbelts at all rear seating positions.	●	●	●	●	●
Rear child-safety door locks	●	●	●	●	●
Safety brake pedal system	●	●	●	●	●
Energy-absorbing collapsible steering column	●	●	●	●	●
Ring-shaped Reinforcement Frame body structure	●	●	●	●	●

## OPTIONAL EQUIPMENT

4-speed adaptive electronic direct-control automatic transmission with SPORTSHIFT manual control	○	○	●	●	●
7-inch high-resolution touch-screen GPS navigation system and 6-speaker audio system with single-disc in-dash CD player, MP3/WMA capability, auxiliary audio/video inputs for portable multimedia devices and Bluetooth® hands-free wireless phone capability	-	-	○	-	○
All-Weather Package: Windshield wiper de-icer, heated side mirrors and heated front seats	-	○	●	-	●

## WARRANTIES

**New Car Limited Warranty:** 3 years or 36,000 miles, whichever comes first. **Powertrain Limited Warranty:** 5 years or 60,000 miles, whichever comes first. **Wear Item Limited Warranty:** 3 years or 36,000 miles, whichever comes first. Repairs to the following items will also be covered under Wear Item Limited Warranty: ● Brake Pads ● Wiper Blades ● Clutch Linings ● Transmitter Batteries **Rust Perforation Limited Warranty:** 5 years, unlimited mileage.

● Standard ○ Optional - Not available

<sup>1</sup> 2010 Subaru Forester non-turbo 2.5-liter models achieving a Partial Zero Emission Vehicle (PZEV) rating by the California Air Resources Board are available in all 50 states. Only those distributed in California, Connecticut, Maine, Massachusetts, New York, New Jersey, Rhode Island, and Vermont are eligible for the 15 years/150,000 miles emissions warranty. California PZEV-certified vehicles are considered the cleanest gasoline-powered vehicles because they meet California's most stringent tailpipe emissions standards for Super Ultra Low Emission Vehicles (SULEV). (Subaru offers other 2010 model emissions warranties for high-cost parts in only those states adopting the CA LEV Program.) <sup>2</sup> 2010 EPA fuel economy estimates. Actual mileage may vary. <sup>3</sup> Optional as part of All-Weather Package. See equipment listing above. <sup>4</sup> Available as an accessory. Satellite radio hardware and required monthly subscription sold separately. See your dealer. <sup>5</sup> The Supplemental Restraint System (SRS) affords the driver and the front passenger additional protection in moderate to severe frontal and side-impact collisions and outboard 2nd-row passengers additional protection in moderate to severe side-impact collisions. This system provides supplemental protection only, and seatbelts must be worn in order to avoid injuries to out-of-position occupants upon airbag deployment and to provide the best combined protection in a serious accident. Children should always be properly restrained in one of the rear seats. See Owner's Manual for recommended seating position.

Some images shown are for illustration purposes only. Specifications in this brochure are based on the latest product information available at the time of publication. For the most up-to-date and detailed product information, log on to [subaru.com](http://subaru.com). Some equipment shown in photography in this brochure is optional at extra cost. Specific options may be available only in combination with other options. Specific combinations of equipment or features may vary from time to time and by geographic area. Certain accessories and equipment may not be available at the time of publication. Subaru of America, Inc., reserves the right to change or discontinue at any time, without notice, prices, colors, materials, equipment, accessories, specifications, models and packages without incurring any obligation to make the same or similar changes on vehicles previously sold. Colors shown may vary due to reproduction and printing processes.

This brochure was prepared by Subaru of America, Inc. A warranty from Subaru of America, Inc., is available only on cars sold to the first retail purchaser through an authorized Subaru dealer in the continental U.S. or Alaska. Every owner of the car during the warranty period shall be entitled to the benefit of these warranties. Subaru, SUBARU BOXER, Added Security and Forester are registered trademarks. SPORTSHIFT is a registered trademark of Prodrive Ltd. XM is a registered trademark of XM Satellite Radio Inc. SIRIUS is a registered trademark of Sirius Satellite Radio Inc. Bluetooth is a registered trademark of Bluetooth SIG, Inc. iPod is a registered trademark of Apple Inc. SmartWay is a registered trademark of the U.S. Environmental Protection Agency. For more information, contact your Subaru dealer or log on to [subaru.com](http://subaru.com).

## Free Manuals Download Website

<http://myh66.com>

<http://usermanuals.us>

<http://www.somanuals.com>

<http://www.4manuals.cc>

<http://www.manual-lib.com>

<http://www.404manual.com>

<http://www.luxmanual.com>

<http://aubethermostatmanual.com>

Golf course search by state

<http://golfingnear.com>

Email search by domain

<http://emailbydomain.com>

Auto manuals search

<http://auto.somanuals.com>

TV manuals search

<http://tv.somanuals.com>