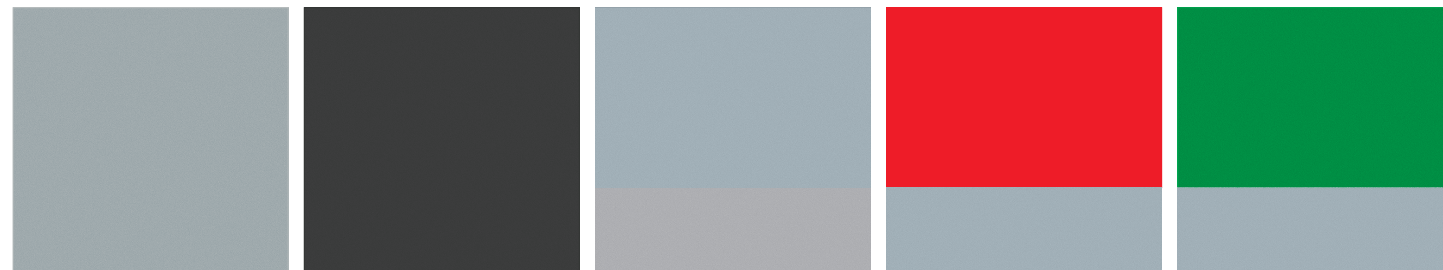


## Paint

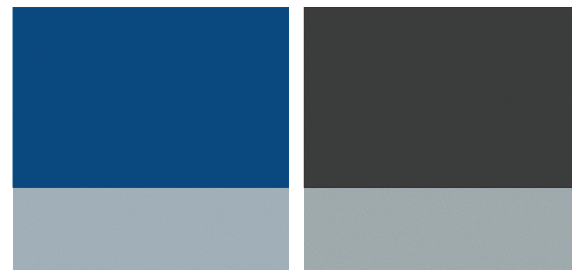
### Exterior



Satin White Pearl    Spark Silver Metallic    Paprika Red Pearl    Camellia Red Pearl    Newport Blue Pearl

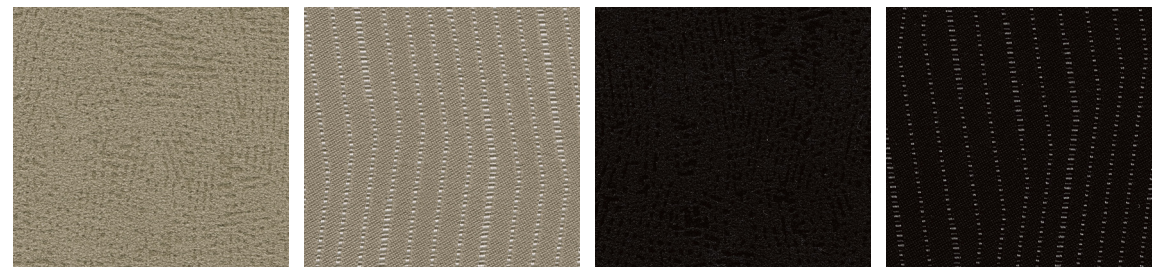


Dark Gray Metallic    Obsidian Black Pearl    Steel Silver Metallic/Spark Silver Metallic    Paprika Red Pearl/Steel Silver Metallic    Sage Green Metallic/Steel Silver Metallic



Newport Blue Pearl/Steel Silver Metallic    Obsidian Black Pearl/Dark Gray Metallic

### Upholstery



Ivory Tricot (IT)    Ivory Cloth (IC)    Carbon Black Tricot (CBT)    Carbon Black Cloth (CBC)

## Impreza Color Combinations

PAINT	2.5i – 2.5i Premium	Outback Sport	2.5GT
Satin White Pearl	IT	-	CBC
Spark Silver Metallic	CBT	-	CBC
Paprika Red Pearl	IT	-	CBC
Camellia Red Pearl	CBT	-	CBC
Newport Blue Pearl	IT	-	CBC
Dark Gray Metallic	CBT	-	CBC
Obsidian Black Pearl	IT	-	CBC
Steel Silver Metallic/Spark Silver Metallic	-	CBC	-
Paprika Red Pearl/Steel Silver Metallic	-	IC	-
Sage Green Metallic/Steel Silver Metallic	-	IC	-
Newport Blue Pearl/Steel Silver Metallic	-	IC	-
Obsidian Black Pearl/Dark Gray Metallic	-	CBC	-

- NOT AVAILABLE

## Impreza® 2.5i | Outback Sport® | 2.5GT Specifications

ENGINE AND DRIVETRAIN	2.5i and 2.5i Premium	Outback Sport	2.5GT
Engine	2.5-liter SOHC aluminum-alloy 16-valve horizontally opposed SUBARU BOXER® engine with i-Active Valve Lift System.		2.5-liter DOHC intercooled, turbocharged aluminum-alloy 16-valve 4-cylinder horizontally opposed SUBARU BOXER engine with Active Valve Control System.
Power	170 hp @ 6,000 rpm		224 hp @ 5,200 rpm
Torque	170 lb-ft @ 4,400 rpm		226 lb-ft @ 2,800 rpm
Manual transmission	Standard fully synchronized 5-speed manual with Incline Start Assist		Not available
Automatic transmission	Optional 4-speed electronic direct-control automatic with SPORTSHIFT® manual control		Standard 4-speed electronically controlled automatic with SPORTSHIFT manual control
CA Emissions	Certified Low Emission Vehicle (LEV2)		Certified Low Emission Vehicle (LEV2)

### FUEL

Fuel economy (city/highway) <sup>1</sup>	Manual: 20/27 mpg Automatic: 20/26 mpg		19/24 mpg
Fuel requirement	Unleaded gasoline (87 octane)		Premium unleaded gasoline (91 octane)

### SYMMETRICAL ALL-WHEEL DRIVE

Continuous All-Wheel Drive	Models equipped with 5-speed manual transmission utilize a viscous-type locking center differential with torque distribution normally configured at a 50/50-split front-to-rear. If wheel speed differs between front and rear axles, the system helps distribute power to the wheels with the most traction.
Active All-Wheel Drive	Models equipped with 4-speed automatic transmission utilize an electronically controlled variable transfer clutch to distribute power to where traction is needed. Sensors monitor parameters such as wheel slippage, throttle position and braking, to help determine power distribution and direct it to the wheels with optimum traction.

### STABILITY AND TRACTION

Vehicle Dynamics Control (VDC)	VDC electronic stability control utilizes sensors which constantly monitor wheel speed, steering angle, brake pressure, vehicle yaw rate and lateral g-forces. If VDC detects a difference between the driver's intended path and the one the vehicle is actually taking, VDC applies braking power and/or reduces engine torque to help correct vehicle path.
Traction Control System (TCS)	VDC also incorporates an all-wheel, all-speed traction control system which, when sensing a loss of traction, applies braking force and reduces engine torque to the slipping wheel or wheels as necessary to maintain vehicle motion.

### CHASSIS

Steering	Power-assisted rack-and-pinion. Turning circle: 34.8 feet.
Suspension	<b>Front:</b> Strut-type with lower L-arm. <b>Rear:</b> Double wishbone. <b>2.5i:</b> 4-wheel independent suspension. Front stabilizer bar. <b>Outback Sport:</b> 4-wheel independent raised suspension. Front stabilizer bar. <b>2.5GT:</b> Sport-tuned 4-wheel independent suspension. Front and rear stabilizers.
Brakes	4-wheel disc, ventilated front. 4-channel, 4-sensor ABS with Electronic Brake-force Distribution (EBD).
Brake discs (front/rear)	<b>2.5i, 2.5i Premium and Outback Sport:</b> 10.9 inches/11.3 inches <b>2.5GT:</b> 11.6 inches/11.3 inches
Brake Assist	When emergency braking is detected by how quickly the brake pedal is pressed, maximum brake pressure is immediately applied.

### WHEELS AND TIRES

Wheels	<b>2.5i:</b> 16 x 6.5-inch steel with full wheel covers. <b>2.5i Premium:</b> 16 x 6.5-inch 12-spoke aluminum-alloy.	17 x 7.0-inch 6-spoke aluminum-alloy. High-luster finish.	17 x 7.0-inch 10-spoke aluminum-alloy
Tires	205/55 R16 M+S all-season	205/50 R17 M+S all-season	205/50 R17 M+S all-season

### EXTERIOR DIMENSIONS

	2.5i, 2.5i Premium and 2.5GT 4-door	2.5i, 2.5i Premium and 2.5GT 5-door	Outback Sport
Length	180.3 inches	173.8 inches	
Width	68.5 inches	68.5 inches	
Height	58.1 inches	58.1 inches	58.3 inches <sup>2</sup>
Wheelbase	103.1 inches	103.1 inches	
Track (front/rear)	58.9 inches/58.9 inches (2.5GT: 58.9 in./59.1 in.)	58.9 inches/58.9 inches (2.5GT: 58.9 in./59.1 in.)	58.7 inches/58.9 inches
Base curb weight (manual/automatic)	<b>2.5i:</b> 3,075 lbs/3,141 lbs <b>2.5i Premium:</b> 3,053 lbs/3,119 lbs <b>2.5GT:</b> N/A/3,240 lbs	<b>2.5i:</b> 3,075 lbs/3,141 lbs <b>2.5i Premium:</b> 3,053 lbs/3,119 lbs <b>2.5GT:</b> N/A/3,240 lbs	3,108 lbs/3,174 lbs

### INTERIOR DIMENSIONS

Headroom (front/rear)	40.3 inches/37.6 inches (with moonroof: 39.3 inches/37.5 inches)	40.3 inches/37.6 inches (with moonroof: 39.3 inches/37.4 inches)
Legroom (front/rear)	43.5 inches/33.5 inches	43.5 inches/33.5 inches
Shoulder room (front/rear)	54.8 inches/53.2 inches	54.8 inches/53.2 inches
Passenger volume	94.6 cubic feet (with moonroof: 93.0 cubic feet)	94.6 cubic feet (with moonroof: 93.2 cubic feet)
Cargo volume	11.3 cubic feet	19.0 cubic feet (44.4 cubic feet with rear seat lowered)

## Impreza® 2.5i | Outback Sport® | 2.5GT Equipment

EXTERIOR	2.5i	2.5i Premium	Outback Sport	2.5GT
Projector low-beam and multireflector high-beam halogen headlights	●	●	●	●
Foglights <sup>3</sup>	-	○	●	●
LED taillights (5-door)	●	●	●	●
Functional hood scoop (feeds turbocharger intercooler)	-	-	-	●
Rear spoiler (5-door)	●	●	●	●
Body-color side mirrors	●	●	●	●
Heated side mirrors and windshield wiper de-icer <sup>3</sup>	-	○	●	●
Body-color door handles	●	●	-	●
Silver-painted door handles	-	-	●	-
Two-speed windshield wipers with variable intermittent mode and mist feature	●	●	●	●
Single-speed rear window wiper with fixed intermittent mode (5-door)	●	●	●	●
Roof Carrier Base	-	-	●	-
Front and rear bumper underguards	-	-	●	-
Body-side moldings	-	-	●	-
Power tilt/sliding-glass moonroof <sup>3</sup>	-	○	-	●

### SEATING AND TRIM

6-way manually adjustable driver's seat, 4-way manually adjustable front-passenger's seat.	●	●	●	●
Heated front seats <sup>3</sup>	-	○	●	●
60/40-split flat-folding rear seatback	●	●	●	●
3-spoke steering wheel with cruise control buttons	●	-	-	-
Leather-wrapped 3-spoke steering wheel with audio system and cruise control buttons	-	●	●	●
Tilt steering column	●	●	●	-
Tilt/telescoping steering column	-	-	-	●
Leather-wrapped shifter handle	-	●	●	●
Tricot upholstery	●	●	-	-
Cloth upholstery	-	-	●	●

### CONVENIENCE FEATURES

Power front and rear windows with driver's auto-down	●	●	●	●
Power side mirrors	●	●	●	●
Electronic cruise control	●	●	●	●
Dual cup holders in center console	●	●	●	●
Single bottle holder in each door panel	●	●	●	●
Sun visors with concealed vanity mirrors	●	●	●	●
Center console with LED-illuminated front storage tray and 12-volt power outlet	●	●	●	●
Illuminated and lockable glove box	●	●	●	●
Cargo-area grocery bag and tiedown hooks (5-door)	●	●	●	●
Retractable and removable cargo-area cover (5-door)	●	●	●	●
Removable cargo-area tray	-	-	●	-

### INSTRUMENTATION

Analog speedometer, tachometer and fuel gauges	●	●	●	●
Sport-design electroluminescent gauges with center-mounted tachometer	-	-	-	●
Digital odometer and automatic transmission (when equipped) shift position indicator	●	●	●	●
Digital trip computer displaying average fuel economy, digital clock and ambient temperature	●	●	●	●

### AUDIO SYSTEMS

4-speaker audio system with single-disc in-dash CD player and MP3/WMA capability	●	-	-	-
10-speaker audio system with 6-disc in-dash CD changer and MP3/WMA capability	-	●	●	●
Auxiliary audio jack	-	●	●	●
XM® or SIRIUS® Satellite Radio capability <sup>4</sup>	●	●	●	●

### CLIMATE CONTROL

Manually adjustable CFC-free air-conditioning system with rotary controls for temperature, fan and airflow direction	●	●	●	-
Automatic climate control system with CFC-free air conditioning, rotary controls for temperature, fan and airflow direction	-	-	-	●

SECURITY	2.5i	2.5i Premium	Outback Sport	2.5GT
Keyless entry system with answer-back electronic chirp	●	●	●	●
Antitheft security system	●	●	●	●
Engine immobilizer	●	●	●	●

### SAFETY

ACTIVE				
Subaru Symmetrical All-Wheel Drive (AWD)	●	●	●	●
SUBARU BOXER® engine	●	●	●	●
4-wheel antilock braking system (ABS) with Electronic Brake-force Distribution (EBD)	●	●	●	●
Vehicle Dynamics Control (VDC)	●	●	●	●
Traction Control System (TCS)	●	●	●	●
Brake Assist	●	●	●	●
Tire Pressure Monitoring System (TPMS)	●	●	●	●
Daytime Running Lights (DRL)	●	●	●	●

### PASSIVE

Subaru advanced frontal airbag system with driver's and front-passenger's front airbags (SRS) <sup>5</sup>	●	●	●	●
Side-curtain airbags protecting front and rear outboard occupants (SRS) <sup>5</sup>	●	●	●	●
Seat-mounted front side-impact airbags (SRS) <sup>5</sup>	●	●	●	●
Height-adjustable active front-seat head restraints	●	●	●	●
Height-adjustable 3-point front seatbelts with pretensioners and force limiters. 3-point seatbelts at all rear seating positions.	●	●	●	●
Rear child-safety door locks	●	●	●	●
LATCH system: Lower Anchors and Tethers for Children	●	●	●	●
Safety brake pedal system	●	●	●	●
Energy-absorbing collapsible steering column	●	●	●	●
Ring-shaped Reinforcement Frame body structure	●	●	●	●

### OPTIONAL EQUIPMENT

4-speed electronic direct-control automatic transmission with SPORTSHIFT® manual control	○	○	○	●
Special Edition Package: Foglights, power tilt/sliding-glass moonroof and All-Weather Package: Windshield wiper de-icer, heated side mirrors and heated front seats	-	○	-	-
Navigation and Power Moonroof Package: 4-speed electronic direct-control automatic transmission with SPORTSHIFT manual control, foglights, power tilt/sliding-glass moonroof, touch-screen GPS navigation system with 7-inch high-resolution screen and auxiliary inputs for portable multimedia devices, 10-speaker audio system with single-disc in-dash CD player, SIRIUS® Satellite Radio <sup>5</sup> and Bluetooth® wireless phone capability, multifunction screen displaying navigation system information and trip computer (current and average fuel economy, driving range, ambient temperature, calculator and maintenance indicator)	-	○	-	-

### WARRANTIES

**New Car Limited Warranty:** 3 years or 36,000 miles, whichever comes first. **Powertrain Limited Warranty:** 5 years or 60,000 miles, whichever comes first. **Wear Item Limited Warranty:** 3 years or 36,000 miles, whichever comes first. Repairs to the following items will also be covered under Wear Item Limited Warranty: • Brake Pads • Wiper Blades • Clutch Linings • Transmitter Batteries **Rust Perforation Limited Warranty:** 5 years, unlimited mileage.

● Standard ○ Optional - Not available

<sup>1</sup> 2010 EPA fuel economy estimates. Actual mileage may vary. <sup>2</sup> Does not include Roof Carrier Base. <sup>3</sup> Available on 2.5i Premium as part of option packages. See equipment listing above. <sup>4</sup> Available as an accessory. Satellite radio hardware and required monthly subscription sold separately. See your dealer. <sup>5</sup> The Supplemental Restraint System (SRS) affords the driver and the front passenger additional protection in moderate to severe frontal and side-impact collisions and outboard 2nd-row passengers additional protection in moderate to severe side-impact collisions. This system provides supplemental protection only, and seatbelts must be worn in order to avoid injuries to out-of-position occupants upon airbag deployment and to provide the best combined protection in a serious accident. Children should always be properly restrained in one of the rear seats. See Owner's Manual for recommended seating position. <sup>6</sup> Activation and required monthly subscription sold separately. See your dealer.

Some images shown are for illustration purposes only. Specifications in this brochure are based on the latest product information available at the time of publication. For the most up-to-date product information, log on to [subaru.com](http://subaru.com). Some equipment shown in photography in this brochure is optional at extra cost. Specific options may be available only in combination with other options. Specific combinations of equipment or features may vary from time to time and by geographic area. Certain accessories and equipment may not be available at the time of publication. Subaru of America, Inc., reserves the right to change or discontinue at any time, without notice, prices, colors, materials, equipment, accessories, specifications, models and packages without incurring any obligation to make the same or similar changes on vehicles previously sold. Colors shown may vary due to reproduction and printing processes.

This brochure was prepared by Subaru of America, Inc. A warranty from Subaru of America, Inc., is available only on cars sold to the first retail purchaser through an authorized Subaru dealer in the continental U.S. or Alaska. Subaru, SUBARU BOXER, Added Security, Impreza and Outback Sport are registered trademarks. Bluetooth is a registered trademark of Bluetooth SIG, Inc. HomeLink is a registered trademark of Prince Corporation, a wholly owned subsidiary of Johnson Controls. SmartWay is a registered trademark of the U.S. Environmental Protection Agency. SIRIUS and XM Radio are registered trademarks of SIRIUS XM Radio Inc. SPORTSHIFT is a registered trademark of Prodrive Ltd. For more information, contact your Subaru dealer or log on to [subaru.com](http://subaru.com).

## Free Manuals Download Website

<http://myh66.com>

<http://usermanuals.us>

<http://www.somanuals.com>

<http://www.4manuals.cc>

<http://www.manual-lib.com>

<http://www.404manual.com>

<http://www.luxmanual.com>

<http://aubethermostatmanual.com>

Golf course search by state

<http://golfingnear.com>

Email search by domain

<http://emailbydomain.com>

Auto manuals search

<http://auto.somanuals.com>

TV manuals search

<http://tv.somanuals.com>