



# Sun Ray™, Smart Cards, and Citrix

---

## Enabling Sun Ray Smart Card Pass-through to Citrix

Sun Microsystems, Inc.  
4150 Network Circle  
Santa Clara, CA 95054 U.S.A.  
650-960-1300

May 2004, Version 1.0

Copyright 2004 Sun Microsystems, Inc., 4150 Network Circle, Santa Clara, California 95054, U.S.A. All rights reserved.

Sun Microsystems, Inc. has intellectual property rights relating to technology embodied in the product that is described in this document. In particular, and without limitation, these intellectual property rights may include one or more of the U.S. patents listed at <http://www.sun.com/patents>, and one or more additional patents or pending patent applications in the U.S. and in other countries.

This document and the product to which it pertains are distributed under licenses restricting their use, copying, distribution, and decompilation. No part of the product or of this document may be reproduced in any form by any means without prior written authorization of Sun and its licensors, if any.

Third-party software, including font technology, is copyrighted and licensed from Sun suppliers.

Parts of the product may be derived from Berkeley BSD systems, licensed from the University of California. UNIX is a registered trademark in the U.S. and other countries, exclusively licensed through X/Open Company, Ltd.

Sun, Sun Microsystems, the Sun logo, Sun Ray, Sun WebServer, Sun Enterprise, Ultra, UltraSPARC, SunFastEthernet, Sun Quad FastEthernet, Java, JDK, HotJava, and Solaris are trademarks, registered trademarks, or service marks of Sun Microsystems, Inc. in the U.S. and other countries. All SPARC trademarks are used under license and are trademarks or registered trademarks of SPARC International, Inc. in the U.S. and other countries. Products bearing SPARC trademarks are based upon an architecture developed by Sun Microsystems, Inc.

Netscape is a trademark or registered trademark of Netscape Communications Corporation.

The OPEN LOOK and Sun™ Graphical User Interface was developed by Sun Microsystems, Inc. for its users and licensees. Sun acknowledges the pioneering efforts of Xerox in researching and developing the concept of visual or graphical user interfaces for the computer industry. Sun holds a non-exclusive license from Xerox to the Xerox Graphical User Interface, which license also covers Sun's licensees who implement OPEN LOOK GUIs and otherwise comply with Sun's written license agreements.

Federal Acquisitions: Commercial Software—Government Users Subject to Standard License Terms and Conditions.

Use, duplication, or disclosure by the U.S. Government is subject to restrictions set forth in the Sun Microsystems, Inc. license agreements and as provided in DFARS 227.7202-1(a) and 227.7202-3(a) (1995), DFARS 252.227-7013(c)(1)(ii) (Oct. 1998), FAR 12.212(a) (1995), FAR 52.227-19, or FAR 52.227-14 (ALT III), as applicable.

DOCUMENTATION IS PROVIDED "AS IS" AND ALL EXPRESS OR IMPLIED CONDITIONS, REPRESENTATIONS AND WARRANTIES, INCLUDING ANY IMPLIED WARRANTY OF MERCHANTABILITY, FITNESS FOR A PARTICULAR PURPOSE OR NON-INFRINGEMENT, ARE DISCLAIMED, EXCEPT TO THE EXTENT THAT SUCH DISCLAIMERS ARE HELD TO BE LEGALLY INVALID.

---

Copyright 2004 Sun Microsystems, Inc., 4150 Network Circle, Santa Clara, California 95054, Etats-Unis. Tous droits réservés.

Sun Microsystems, Inc. a les droits de propriété intellectuelle relatant à la technologie incorporée dans le produit qui est décrit dans ce document. En particulier, et sans la limitation, ces droits de propriété intellectuelle peuvent inclure un ou plus des brevets américains énumérés à <http://www.sun.com/patents> et un ou les brevets plus supplémentaires ou les applications de brevet en attente dans les Etats-Unis et dans les autres pays.

Ce produit ou document est protégé par un copyright et distribué avec des licences qui en restreignent l'utilisation, la copie, la distribution, et la décompilation. Aucune partie de ce produit ou document ne peut être reproduite sous aucune forme, par quelque moyen que ce soit, sans l'autorisation préalable et écrite de Sun et de ses bailleurs de licence, s'il y en a.

Le logiciel détenu par des tiers, et qui comprend la technologie relative aux polices de caractères, est protégé par un copyright et licencié par des fournisseurs de Sun.

Des parties de ce produit pourront être dérivées des systèmes Berkeley BSD licenciés par l'Université de Californie. UNIX est une marque déposée aux Etats-Unis et dans d'autres pays et licenciée exclusivement par X/Open Company, Ltd.

Sun, Sun Microsystems, le logo Sun, Sun Ray, Sun WebServer, Sun Enterprise, Ultra, UltraSPARC, SunFastEthernet, Sun Quad FastEthernet, Java, JDK, HotJava, et Solaris sont des marques de fabrique ou des marques déposées, ou marques de service, de Sun Microsystems, Inc. aux Etats-Unis et dans d'autres pays.

Toutes les marques SPARC sont utilisées sous licence et sont des marques de fabrique ou des marques déposées de SPARC International, Inc. aux Etats-Unis et dans d'autres pays. Les produits portant les marques SPARC sont basés sur une architecture développée par Sun Microsystems, Inc.

Netscape est une marque de Netscape Communications Corporation aux Etats-Unis et dans d'autres pays.

L'interface d'utilisation graphique OPEN LOOK et Sun™ a été développée par Sun Microsystems, Inc. pour ses utilisateurs et licenciés. Sun reconnaît les efforts de pionniers de Xerox pour la recherche et le développement du concept des interfaces d'utilisation visuelle ou graphique pour l'industrie de l'informatique. Sun détient une licence non exclusive de Xerox sur l'interface d'utilisation graphique Xerox, cette licence couvrant également les licenciées de Sun qui mettent en place l'interface d'utilisation graphique OPEN LOOK et qui en outre se conforment aux licences écrites de Sun.

LA DOCUMENTATION EST FOURNIE "EN L'ETAT" ET TOUTES AUTRES CONDITIONS, DECLARATIONS ET GARANTIES EXPRESSES OU TACITES SONT FORMELLEMENT EXCLUES, DANS LA MESURE AUTORISEE PAR LA LOI APPLICABLE, Y COMPRIS NOTAMMENT TOUTE GARANTIE IMPLICITE RELATIVE A LA QUALITE MARCHANDE, A L'APTITUDE A UNE UTILISATION PARTICULIERE OU A L'ABSENCE DE CONTREFAÇON.



Adobe PostScript

# Contents

---

Overview	1
Software Requirements	2
Solaris Operating Environment	2
Sun Ray Server Software and Patches	2
Sun Ray PC/SC Bypass	3
Citrix Client	3
Microsoft/Citrix Server Components	3
Hardware Requirements	3
Sun Ray Requirements	4
Smart Card Requirements	4
Installation Notes	5
Configuring and Testing Citrix Smart Card Support	6
To Install and Configure Citrix ICA Client	6
Required Reading/Other Resources	10



# Enabling Sun Ray™ Smart Card Pass-through to Citrix

---

This document is designed to help users configure the Sun Ray environment so that the smart card channel is available from the Citrix Server to the Sun Ray desktop. It covers the software required to establish this channel as well as how to install, configure, and test the feature.

---

**Note** – The information in this document supersedes the requirement for the PC/SC Lite package as listed in the *Citrix Administrators Guide for UNIX ICA Clients* in so far as it applies to Sun Ray configuration.

NB: This is not applicable to other Sun workstations.

---

---

## Overview

The primary (or out-of-the-box) function of smart cards in a Sun Ray environment is to provide session mobility via the *hot desking* feature of the Sun Ray Server and its clients, or desktop units (DTU). However, some smart cards, when combined with middleware, also enable the ability to provide strong, two-factor authentication for access control and the ability to digitally sign, encrypt, and decrypt files, email, etc.

It is also possible to use Citrix MetaFrame™ XP to extend this functionality from the Sun Ray environment to a Windows environment. Citrix MetaFrame XP added smart card support in Feature Release 2 and enabled this support on the client side starting with the 6.30 version of ICA® Client for Solaris™/SPARC®.

The end result is that a Sun Ray user can perform certain tasks in a Windows environment, including:

- PIN-based logins
- Digital signing, encrypting, and decrypting of email messages from Windows-based email clients such as Microsoft Outlook.

---

**Note** – The configuration of Citrix and Windows servers and potential applications, including smart card middleware, to be smart card-aware is beyond the scope of this document; however, pointers are given where appropriate.

---

## Software Requirements

The following software is required to ensure the proper operation of smart card pass-through from the Sun Ray DTU to the Citrix Server.

### Solaris Operating Environment

The only Solaris requirements are those that are required by Sun Ray Server Software 2.0:

- Solaris 9 Update 1 or better with the latest Solaris Cluster Patch or
- Solaris 8 Update 7 or better with the latest Solaris Cluster Patch

### Sun Ray Server Software and Patches

- Sun Ray Server 2.0

<http://wwws.sun.com/software/download/products/3e3af226.html>

- Sun Ray Server Patch 114880-04 or later

<http://sunsolve.sun.com/pub-cgi/patchDownload.pl?target=114880&method=h>

## Sun Ray PC/SC Bypass

- Sun library to provide direct access to the Sun Ray smart card reader via the PC/SC API bypassing both the Open Card Framework (OCF) and the Solaris Card Framework (SCF).
- Package name is SUNwsrscbp. Use version 1.0\_07 or later.
- Available from the Sun download center free of charge.

<http://www.sun.com/software/download/>

## Citrix Client

- Citrix ICA Client for Solaris/SPARC 6.30 or better. The current version as of this writing is 7.02.

<http://www.citrix.com/site/SS/downloads/details.asp?dID=2755&downloadID=3283#top>

## Microsoft/Citrix Server Components

- Windows 2000 or 2003 with the latest Service Pack and Hot fixes
- Citrix MetaFrame XP (a, s, or e) FR2 or better

See *"Using Smart Cards"* in *Citrix MetaFrame Advanced Concepts Guide*

[http://support.citrix.com/servlet/KbServlet/download/2951-102-9534/Feature\\_Release\\_3\\_Advanced\\_Concepts.pdf](http://support.citrix.com/servlet/KbServlet/download/2951-102-9534/Feature_Release_3_Advanced_Concepts.pdf)

- Smartcard Client software installed in Citrix Server (such as ActivCard or Netsign)

---

## Hardware Requirements

The following hardware is required to ensure the proper operation of smart card pass-through from the Sun Ray DTU to the Citrix Server.

- Sun Ray thin client (No specific DTU model)
- Sun SPARC-based Server (i.e., Sun Ray Server)
- Intel Server (For Windows/Citrix Server)

# Sun Ray Requirements

Configuring your Sun Ray Server to allow smart card support for Citrix sessions requires the following steps:

1. Ensure that you are running a current version of Solaris that supports Sun Ray Server Software 2.0.
2. Apply the latest Solaris Cluster Patch.
3. Apply the latest Sun Ray Server Patch 114880.  
The current version as of this document is 114880-04
4. Ensure that smart card middleware is installed on the Citrix Server
5. Install the Sun Ray PC/SC Bypass package.  
Patch 114880-04 or later must be installed prior to installation
6. Configure/test Citrix ICA Client for Solaris/SPARC.

The first four steps are either general Solaris administration tasks or are beyond the scope of this document, such as installing third-party middleware on the Citrix Server. The steps that deal with installing Sun Ray PC/SC Bypass and configuring and testing the ICA client are covered in detail below.

## Smart Card Requirements

Microsoft Windows natively supports a limited number of smart cards. It is important to have the correct drivers for the smart cards to be used in this environment. Support for various smart cards varies by smart card client software (often referred to as middleware) installed on the Citrix Server. For example, the U.S. Department of Defense Common Access Card is not natively supported by Windows and requires that middleware be installed on the Citrix Server (i.e. ActivCard for CAC, Netsign CAC, Schlumberger CACTus, etc.).

- Cards supported with Windows 2003 Server can be viewed here:

[http://www.microsoft.com/technet/treeview/default.asp?url=/technet/prodtechnol/windowsserver2003/proddocs/entserver/sag\\_SC\\_use\\_sctypes.asp](http://www.microsoft.com/technet/treeview/default.asp?url=/technet/prodtechnol/windowsserver2003/proddocs/entserver/sag_SC_use_sctypes.asp)

- Cards supported with Windows 2000 Server can be viewed here:

[http://www.microsoft.com/windows2000/en/server/help/default.asp?url=/windows2000/en/server/help/sag\\_SC\\_use\\_sctypes.htm](http://www.microsoft.com/windows2000/en/server/help/default.asp?url=/windows2000/en/server/help/sag_SC_use_sctypes.htm)



---

**Note** – If you connect to a Windows Server and receive the following message: *The card supplied requires drivers that are not on the system. Please try another card.* then you do not have a supported smart card for Windows and need middleware to support your smart card in a Windows environment.

---

## ▼ Installing the Sun Ray PC/SC Bypass

---

**Note** – Make sure that patch 114880-04 or later is installed before installing the Sun Ray PC/SC Bypass.

---

1. **Get the SUNWsrcbp package from the Sun Download Center.**

<http://www.sun.com/software/download>

2. **Extract the package.**

3. **Install the SUNWsrcbp package via pkgadd.**

---

## Installation Notes

A reboot of the server or a restart of Sun Ray Services should not be required; however, the use of ActivCard Gold for Solaris or other implementations of PC/SC lite, such as MUSCLE, may require a reboot.

If the Sun Ray PC/SC Bypass is used in conjunction with ActivCard Gold for Solaris, the following additional tasks must be performed to allow the ActivCard product to operate correctly:

1. **Remove** `/etc/rc3.d/S99pcscd`
2. **Rename** `/usr/local/acgold/lib/libpcsc-lite.so` to `/usr/local/acgold/lib/libpcsc-lite.ac`
3. **Symlink (ln -s)** `/opt/SUNWut/lib/libpcsc-srcom.so` to `/usr/local/acgold/lib/libpcsc-lite.so`

---

# Configuring and Testing Citrix Smart Card Support

This document assumes that you know how to install and create connections using the Citrix ICA Client. For information on installing and configuring the Citrix Client for UNIX please read the *Administrators Guide* available at:

<http://download2.citrix.com/files/en/products/client/ica/current/docs/UnixCAG.pdf>

## To Install and Configure Citrix ICA Client

- 1. Install the latest Citrix ICA Client for Solaris (SPARC).**

Use the latest version available from <http://www.citrix.com/download>

- 2. Uncompress and extract the distribution.**

- 3. Run `setupwfc` from the location to which the distribution was extracted.**

- 4. Take all defaults (install in `/usr/lib/ICAClient`).**

If this step is not followed, the `ICAROOT` variable must set for each user

- 5. Launch the Citrix Client.**

```
# /usr/lib/ICAClient/wfcmgr
```

The Citrix ICA Client for Solaris window appears.

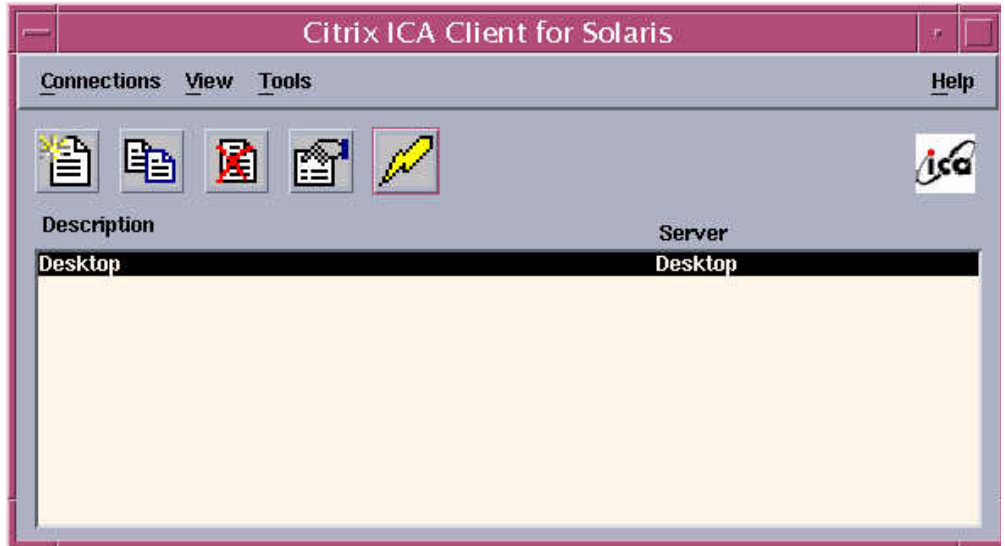
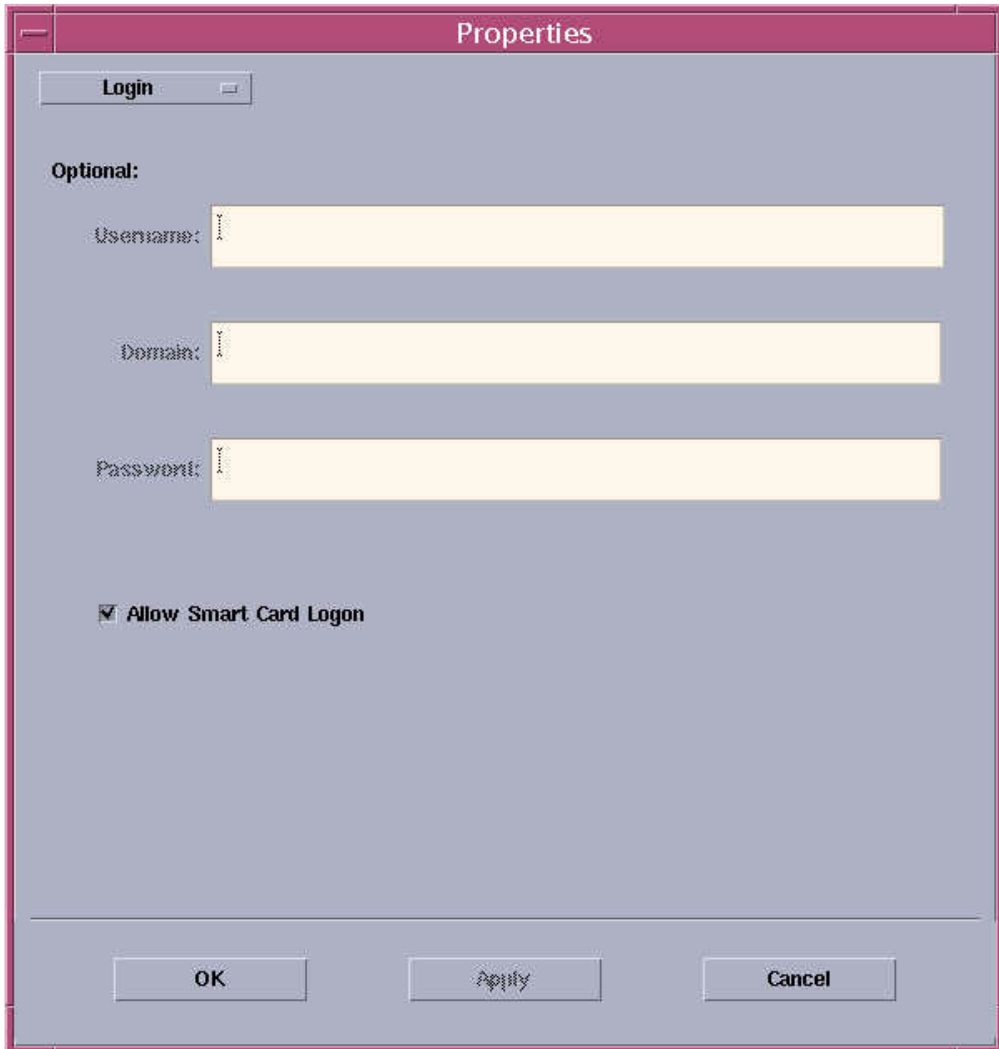


FIGURE 1 Citrix ICA Client for Solaris Window

6. Highlight the Connection you wish to test Smart Card support for, and click the properties button.



The Connection Properties Screen appears.



**FIGURE 2** Connection Properties Screen

**a. Select the drop down box labeled Network and select Login.**

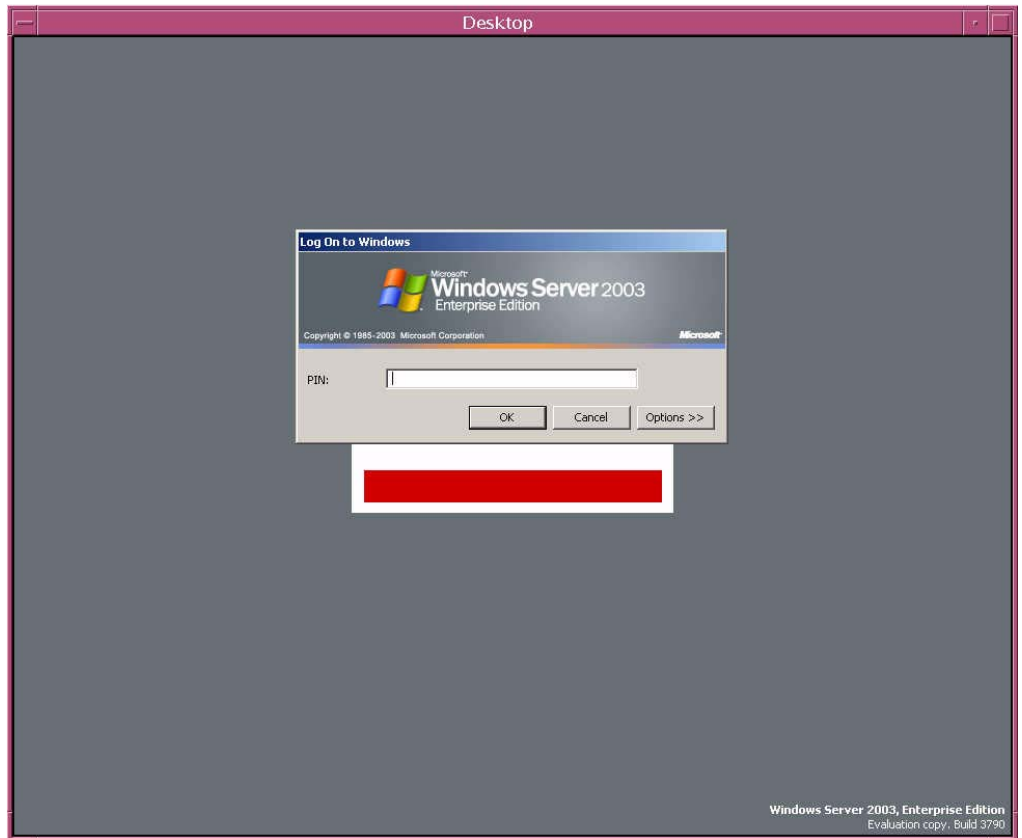
This presents the properties screen for Logon attributes.

**b. For testing purposes, check the box labeled Allow Smart Card Logon.**

**c. Click OK.**

**d. Launch your connection.**

When the Windows Desktop or Published Application appears, you should be prompted for a PIN-based Login



**FIGURE 3** Windows Desktop with Prompt for PIN-based Login

---

**Note** – If you connect to a Windows Server and receive the following message:  
*The card supplied requires drivers that are not on the system. Please try another card.*  
then you do not have a supported smart card for Windows and need middleware to support your smart card in a Windows environment; however, this message indicates that the smart card channel is operating correctly.

---

You have now successfully enabled and tested the smart card channel from the Sun Ray DTU to the Citrix Server.

---

**Note** – Unless your Windows environment is configured to perform PIN-based logins (either via a Microsoft Certificate Server infrastructure or via middleware) you should disable the Allow Smart Card Logon option for your Citrix Connection. It is important to note that this does NOT disable the smart card channel for use with other smart card-aware applications; it is just a very simple way to test the channel.

---

## Required Reading/Other Resources

Smart card support in a Citrix environment depends on more than just the communication channel being established. Out-of-the-box Citrix smart card support is limited to logins only. Unfortunately, smart card-based logins are not trivial and require a fair amount of work to ensure proper operation. For more information on configuring the Windows environment for smart card logins see the following Microsoft article:

<http://support.microsoft.com/default.aspx?scid=kb;en-us;257480>

For information on enabling Smart Card Logon with Third Party Certification Authorities (such as would be the case with the Common Access Card) please see the following Microsoft Knowledge Base article:

<http://support.microsoft.com/default.aspx?scid=kb;en-us;281245>

Administrators of Citrix environments must configure Citrix to allow other applications, such as Outlook, middleware utilities, etc., to use the smart card channel. Use the SCONFIG utility. For more information on using smart cards and Citrix please see the *Citrix Advanced Concepts Guide*.

[http://support.citrix.com/servlet/KbServlet/download/2951-102-9534/Feature\\_Release\\_3\\_Advanced\\_Concepts.pdf](http://support.citrix.com/servlet/KbServlet/download/2951-102-9534/Feature_Release_3_Advanced_Concepts.pdf)

## Free Manuals Download Website

<http://myh66.com>

<http://usermanuals.us>

<http://www.somanuals.com>

<http://www.4manuals.cc>

<http://www.manual-lib.com>

<http://www.404manual.com>

<http://www.luxmanual.com>

<http://aubethermostatmanual.com>

Golf course search by state

<http://golfingnear.com>

Email search by domain

<http://emailbydomain.com>

Auto manuals search

<http://auto.somanuals.com>

TV manuals search

<http://tv.somanuals.com>