



## *Digital Photo Frame User's Manual*



## User Notice

As this product has met electronic emission standards in registration for use at home, it can be safely used in all areas, including residential.



# CONTENTS

PRODUCT INTRODUCTION .....	3
COMPONENTS.....	4
PART NAMES .....	5
CONNECTION .....	6
PHOTO .....	8
SETTINGS .....	10
EDITING.....	15
FAVORITE.....	17
QUESTION & ANSWER .....	18
TROUBLESHOOTING .....	19
PRODUCT SPECIFICATIONS .....	20
WARRANTY .....	22

## Product introduction

---

Digital Photo Frame is a convenient image album that keeps fun and Cherishes memories at your fingertips.

With its bright and vivid LCD screen, the Digital Photo Frame eliminates the need for tedious photo printing and injects a new level of convenience into your life.

With its diverse storage functions, the Digital Photo Frame allows you to relive wonderful memories anytime.

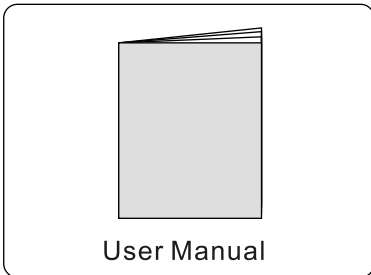
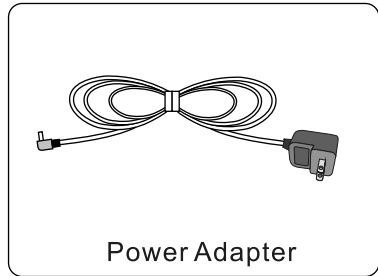
# Components

---

For the improvement of product performance and/or quality, the basic components may be modified without prior notice. The components may differ slightly in appearance with the provided images.

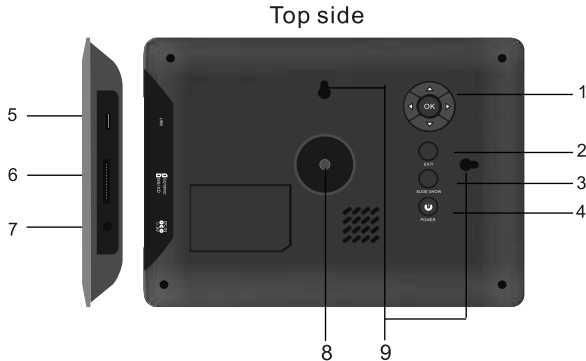
## Basic Components

The components are provided upon product purchase.



## Part Names

The components may differ slightly in appearance with the provided images.



### MEANING:

#### 1. Navigation buttons

OK: Press OK to confirm or enter, play or pause.

◀: Press ▶ to move the cursor left or to rotate by left 90°.

▶: Press ▶ to move the cursor right or to rotate by right 90°.

▲: Press ▲ to move the cursor to the previous icon or skip to the previous picture.

▼: Press ▼ to move the cursor to the next icon or skip to the next picture.

2. EXIT: Press EXIT to exit and back to the previous menu.

3. SLIDE SHOW: Press SLIDE SHOW to start a photo slide show and press again to begin a photo step show.

Note: This function of the button is effective to play pictures in cards only. If you have inserted a supported card correctly, press "Slideshow" button at any interface, it will slideshow pictures directly. If no card is inserted, the button will not work.

4. POWER: Turn the product on and off.

5. USB: Connect to a USB portable flash with a USB cable.

6. SD/MMC/MS/XD: Insert SD/MMC/MS/XD card.

7. DC IN: Insert the DC power adaptor to the DPF player.

8. Stand: Using the stand provided you can stand the body with horizontal view and vertical view.

9. Wall Mountable.

# Connection

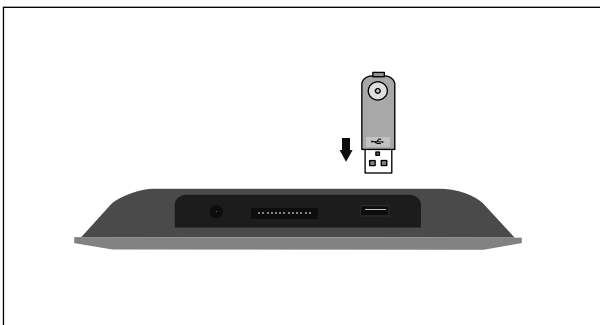
## Power Connection



1. Connect the power adapter to the DC 5V jack at the left side of the product.
2. Plug in the power cable.

## Connect to USB Port

USB: Insert various USB portable flash driver as an extra source.



## Connection

### Memory Card insertion

Insert card in the direction indicated by the arrow on the top of the card. (The side of the memory card on which the sticker is affixed should face to the front)

Aligning the memory card upside down or to the reverse side may cause damage that is the sole responsibility of the user. (Use SD, Memory Stick, MMC, XD cards enabled)



- Note:**
1. MS Duo isn't compatible alone. But it can be supported with the help of MS Duo adapter.
  2. It is recommended that a full format be performed before using a memory card for the first time.
  3. This device will read USB first and will not recognise the memory card if you insert a memory card and extra USB memory together at the same time .

### To remove a memory card

Remove a memory card from a slot in the opposite direction from which it was inserted.

**Note:** The product will display the images stored in the external devices first and will not display the images in the internal memory if you insert an external devices.



## Photo

### Picture slideshow

After connecting power, the frame will work and slide show pictures automatically.

Tip 1. Press the Menu button to enter the main menu. Select the Photo icon and press OK to display photo.



Tip 2. In the main menu, if an extra device with photos is inserted to the unit, select the Photo icon and press OK to begin display the photos in the extra device.

### Single Picture Show

In the slide show mode, if you prefer to display a particular picture, press "Slide show" button at the back of the frame to enter into single picture show mode, you will see "slide off" on the right up corner of the screen. Press again to come to slide show mode, you will see "slide on" on the right up corner of the screen.



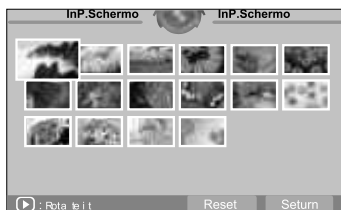
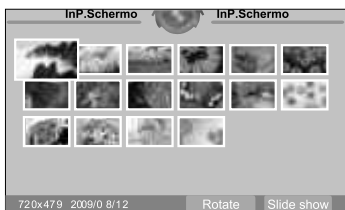
## Photo

### Rotating a Photo

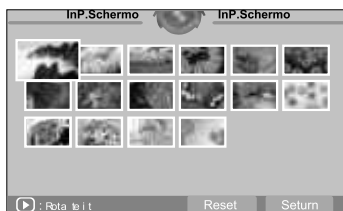
Tip 1: When displaying a photo, press the LEFT button to rotate the photo left 90° and press the RIGHT button to rotate the photo by right 90°. Each pressing can rotate a photo by 90°.



Tip 2: 1. In the Thumbnail mode, press the ▼ button to move the cursor to the Rotate icon, then press OK to begin Rotate Mode.  
2. Select the desired photo, and press OK to rotate the photo.



Press the Reset button to give up the previous settings, and press the Return button to save the settings and back to the previous mode.



# Settings

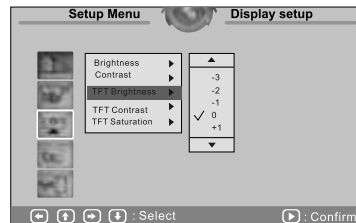
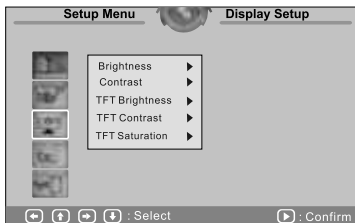
## Enter SETUP menu

In the main menu, press the Navigation button to select the Setup icon, press OK to enter into the setting mode.



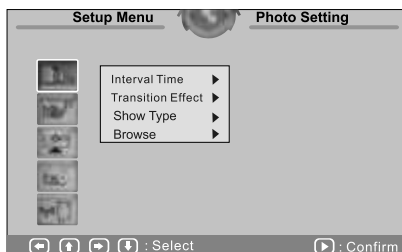
## Moving to Desired Setting item and Changing Settings

1. Press the ▲ button to select items.
2. Press the ▼ button to enter the setting item list.
3. Press ▲ or ▼ buttons to select desired setting items.
4. Press OK to change setting.



## Settings

### Setup Menu-Photo Setting



#### Interval Time

In the setup menu, select Setup Menu-Photo Setting. Then select the “Interval Time” to set the desired time that make the image remains on the screen in slide show mode.

#### Transition Effect

In the setup menu, select Setup Menu-Photo Setting. Then select the Interval Effect to set the desired transfer effect in slide show mode.

#### Show Type

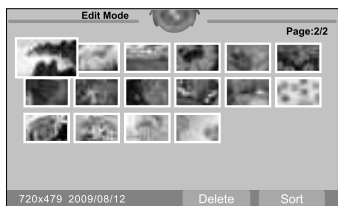
In the setup menu, select Setup Menu- Photo Setting. Then select the “Show Type” to set the desired photo displaying type. Select Fit Screen to display images fit to screen in slide show mode; and select Full Screen to display entire images in slide show mode.

# Settings

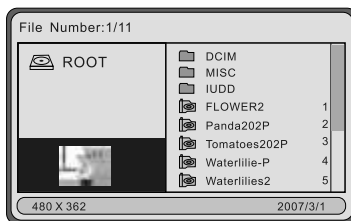
## Browse

In the setup menu, select Setup Menu-Photo Setting. Then select the “Browse” to set the desired browse mode.

Set the Browse (Thumbnail / File manager ) mode to pre-view photos in different mode.



(Thumbnail mode)



(File manager mode)

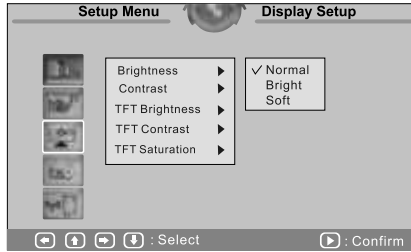
## Setup Menu- Auto - Play

### Photo

In the setup menu, select Setup Menu-Auto-Play. Then select the Photo to set the photo displaying auto or Not.

1. Set the photo auto play to ON: It will auto display the photos in slide show mode.
2. Set the photo auto play to OFF: For manual play.

## Setup Menu- Display Setup



### Brightness

In the setup menu, select Setup Menu-Display Setup. Then select the “Brightness” to adjust the displaying brightness.

Select the Normal / Bright / Soft to adjust display.

### Contrast

In the setup menu, select Setup Menu-Display Setup. Then select the “Contrast” to adjust the displaying contrast.

### TFT Brightness

In the setup menu, select Setup Menu-Display Setup. Then select the “TFT Brightness” to adjust the TFT brightness.

### TFT Contrast

In the setup menu, select Setup Menu-Display Setup. Then select the “TFT Contrast” to adjust the TFT contrast.

### TFT Saturation

In the setup menu, select Setup Menu-Display Setup. Then select the “TFT Saturation” to adjust the TFT Saturation.

## Settings

---

### Setup Menu - Custom Setup

#### OSD Language

In the setup menu, select Setup Menu-Custom Setup. Then select the “OSD Language” to select different language.

Note: For this product, the only OSD language is English.

#### Repeat mode

In the setup menu, select Setup Menu-Custom Setup. Then select the “Repeat mode” to changed the repeat mode:

Select One to repeat One picture only

Select Folder to repeat pictures in a folder

Select All to repeat all of the photos

Select Off to cancel the repeat mode

#### Default

In the setup menu, select Setup Menu-Custom Setup. Then select the “Default” to reset the unit to factory default.

#### Exit

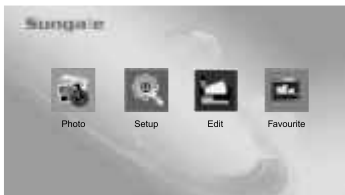
In the setup menu, select Setup Menu-Custom Setup. Then select the “Exit” to finish the setup menu to go back to the main menu.

## Editing

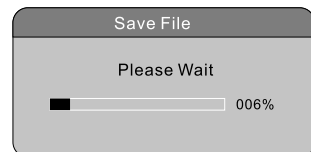
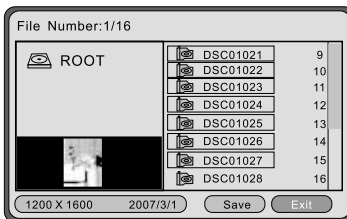
**Edit:** Adding the pictures from external memory to the DPF, or deleting the pictures stored in the DPF.

### Copy

1. Select the Edit icon in the main menu, and press OK to enter the Edit Dialog.



2. Select the Copy icon and press OK, then the file list will appear on the right part of the screen.



3. Use ▲ or ▼ to select the desired images and press OK to confirm.

4. Press the ◀ or ▶ buttons to move the cursor to the Save icon, and the icon will become yellow, press OK, then the photos will be copied to the internal memory.

5. After saving, you can select the Exit icon to back to the main menu.

Note: The highlight will be down to the file name that is selected. The DPF only can store 1 pictures. Otherwise, you can not move the highlight down to the file name.

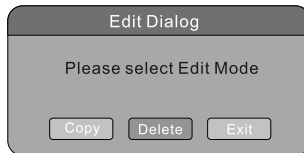


# Editing

## Delete

**Note: Pictures deleted cannot be recovered. Think over before you confirm to delete.**

1. Select the Edit icon in the main menu, and press OK to enter the Edit Dialog.
2. Select the Delete icon, and press OK to enter the file list.



3. Select the desired images and press OK to confirm. To delete more, continue select images and confirm.
4. If delete all the pictures in the frame, select Delete All item.



## Sort

After deleting, press the navigation buttons to select the Sort icon and press OK to sort the order.

## Exit

1. Press ▼ and ► to select "Return" to return to the last interface

2. Press the navigation buttons to select the Return icon and press OK to exit.

## Favourite

---

### Playing the pictures

You can copy and paste images from extra devices to your digital photo frame, and they will be stored under the Favourite menu.

Press the Navigation buttons to select the Favourite item and press OK to display the images.



## Question & Answer

This chapter will attempt to troubleshoot common problems that one may experience with the DPF. If this guide does not solve your problem, do not dismantle the machine yourself.

Question	Answer
What photo, formats are supported by the Digital Photo Frame?	Photo: JPEG
What memory cards are compatible with the digital frame?	Secure Digital Card (SD)/MultiMedia Card (MMC) Memory Stick card(MS)/XD
Dose the Digital Photo Frame have built-in memory?	Yes. The player has an internal memory to store media file. You can store 10 pictures at most.
Can I insert multiple memory cards?	Yes,you can insert one of the MMC,MS,SD,XDcard each time.
What is the best picture resolution displayed on the screen?	The player's best resolution is 800X480
Can I adjust the colors of the picture?	No. All color settings are preset at the factory. You can only adjust the brightness and contrast of the screen.
Why Digital picture Frame does not advance to next picture?	<ol style="list-style-type: none"> <li>1. There is only one picture in the frame.</li> <li>2. You are viewing high -resolution pictures on the card, High-resolution pictures can take longer time to display.</li> <li>3. You are in STEP SHOW display mode.</li> <li>4. The next picture is damaged.</li> </ol>
Why is only 24 pictures displayed in the thumbnail browsing mode?	Use navigation buttons to choose the image on the right-lower corner, then press ◀ to see next 24 pictures thumbnail.
Why picture display seems slow?	You are viewing high-resolution pictures, high- resolution pictures can take some time to display.
Why Digital Picture Frame doesn't display any pictures?	Make sure the pictures are in JPEG format. Make sure you have inserted a card or USB device properly and selected the PHOTO icon in the main menu. Or make sure there are pictures in the internal memory and you have selected the FAVORITE icon in the main menu.
Why picture doesn't cover the entire screen ?	This is not a quality problem. The picture that is 16:9 and the resolution higher than 800X480 can cover the entire screen, so please adjust the picture ratio to 16:9, and the resolution to 800X480 or higher.
How can I see the file list?	Please enter into the setup Menu-Photo Setting and set the Browse item to File Manager.

## Troubleshooting

If you have any questions, please consult the troubleshooting guide below. Some simple checks or a minor adjustment on your part may eliminate the problem and quickly resolved .

### No power

Ensure the power button is on  
Ensure the power cord is not damaged  
Ensure the power plug is connected firmly to the outlet

### Could not read the card

1. Please copy the content in your card to your PC, then format your card, then past your photos in your card again, then insert the card to DPF to read it.
2. Ensure the card is not damaged
3. Ensure the card is connected to the DPF correctly
4. Ensure the card has photos, if no photos in card, the screen will display “no playable file”
5. Do not insert your card and USB together at same time. Otherwise one of device can not be recognized.

### Could not read the USB portable flash driver

1. This unit is 2.0 version USB port, make sure your usb device port is 2.0 version
2. Do not insert your card and USB together at same time. Otherwise one of device can not be recognized

# Product Specifications

Specifications can be changed without prior notice in the interest of improving product performance.

## Product Specifications

Item		Details
<b>LCD Display</b>	<b>Size</b>	<b>7 Inch (Diagonal) (16:9)</b>
<b>Matching Image</b>	<b>Resolution</b>	<b>800(Horizontal)* 480(Vertical)</b>
Memory	Internal Memory	10 photos can be stored
	Compatible Memory Cards	SD / MMC / MS / XD
Support Media Formats	Images	JPEG(jpg)
Power	Adapter	Input: 100~240V AC, Output: 5V DC
<b>USB Connection</b>	<b>USB</b>	<b>USB 2.0</b>

Note: All data are provided for reference purposes only. Sungale reserves the right to make all changes without prior notice.

## **FCC and Safety Information**

---

### **• FCC Part 15.19**

This device complies with Part 15 of the FCC Rules .Operation is subject to the following two conditions: (1) this device may not cause harmful interference , and (2) this device must accept any interference received ,including interference that may cause undesired operation .

### **• FCC part 15.21**

Warning: Changes or modifications to this unit not expressly approved by the party responsible for compliance could void the user's authority to operate the equipment.

### **• FCC part 15.105**

Note : This equipment has been tested and found to comply with the limits for a Class B digital device ,pursuant to Part 15 of the FCC Rules, These limits are designed to provide reasonable protection against harmful interference in a residential installation .This equipment generates, uses, and can radiate radio frequency energy and ,if not installed and used in accordance with the instructions, may cause harmful interference which will not occur in a particular installation .If this equipment does cause harmful interference to radio or television reception ,which can be determined by turning the equipment off and on ,the user is encouraged to correct the interference by one or more of the following measures:

- Reorient or relocate the receiving antenna.
- Increase the separation between the equipment and receiver.
- Connect the equipment into an outlet on circuit different from that to which the receiver is connected.
- Consult the dealer or an experienced radio TV technician for help.

## LIMITED WARRANTY

The limited warranty set forth below is given by the manufacturer with respect to Sungale brand DPF players and other consumer electronics products purchased and used in the United States of America. The manufacturer warrants this product against defects in material or workmanship as follows:

**LABOR:** For a period of ninety (90) days from the date of purchase if this Product is defective, the manufacturer will repair or replace the Product, at its option, at no charge. After this ninety (90) days period up to one year, a labor charge of US\$30.00 will be charged for each service.

**PARTS:** For a period of one year from the date of purchase, the manufacturer will supply, at no charge, new or rebuilt replacement parts in exchange for defective parts. After this one year period, the manufacturer will charge the new or replacement parts.

This warranty does not cover: (1) customer instruction, installation or set up; (2) cosmetic damage or damage due to accident, misuse, abuse, or negligence; (3) commercial use of the Product; (4) modification of any part of the Product; (5) damage due to improper operation, improper maintenance, or connection to an improper voltage supply; (6) damage due to an attempted repair of the Product by anyone other than a facility authorized by the manufacturer to service the Product; (7) consumables (such as fuses and batteries). This warranty is valid only in the United States.

The product must be accompanied by a copy of the original retail purchase receipt. If no proof of purchase is attached, the warranty will not be honored and repair cost will be charged.

This warranty is valid with attach written documentation detailing the complaint to the outside or inside of the carton.

This warranty is invalid if the factory applied serial number has been altered or removed from the Product.

The manufacturer reserves the right to modify any design of this product without prior notice.

To obtain warranty service, you must deliver the product freight prepaid, in either its original packaging or packaging affording an equal degree of protection, plus proof of purchase, to:

Service Center  
13941 Central Ave,  
Chino, CA 91710  
Tel: **800-473-5156**

REPAIR OR REPLACEMENT AS PROVIDED UNDER THIS WARRANTY IS THE EXCLUSIVE REMEDY OF THE CONSUMER. THE SERVICE CENTER SHALL NOT BE LIABLE FOR ANY INCIDENTAL OR CONSEQUENTIAL DAMAGES FOR BREACH OF ANY EXPRESS OR IMPLIED WARRANTY ON THIS PRODUCT. EXCEPT TO THE EXTENT PROHIBITED BY APPLICABLE LAW, ANY IMPLIED WARRANTY OF MERCHANTABILITY OR FITNESS FOR A PARTICULAR PURPOSE ON THIS PRODUCT IS LIMITED IN DURATION TO THE DURATION OF THIS WARRANTY.

Some states do not allow the exclusion or limitation of incidental or consequential damages, or allow limitations on how long an implied warranty lasts, so the above limitations or exclusions may not apply to you. This warranty gives you specific legal rights, and you may have other rights which vary from state to state.

Digital Photo Frame

**Sungale**



## Free Manuals Download Website

<http://myh66.com>

<http://usermanuals.us>

<http://www.somanuals.com>

<http://www.4manuals.cc>

<http://www.manual-lib.com>

<http://www.404manual.com>

<http://www.luxmanual.com>

<http://aubethermostatmanual.com>

Golf course search by state

<http://golfingnear.com>

Email search by domain

<http://emailbydomain.com>

Auto manuals search

<http://auto.somanuals.com>

TV manuals search

<http://tv.somanuals.com>