



Industrial Management Ethernet Switches

Quick Installation Guide

Version 1.0

Introduction

SUNIX Ethernet infrastructure products. SUNIX Ethernet Switches (ESW Series) are designed focus on Ethernet deployment in automation applications and specially developed for industrial Ethernet applications with all concerns for industrial environments taken into consideration. The advanced management features, Elite-Ring (communication redundancy technology), easy configuration and robust mechanical from factors enable quick Ethernet installation for factory, transportation, building and utility automation applications. Redundant power inputs and relay output alarm provides the possibility to build an on-site alarm system. SUNIX switches are ideal for any application where performance demands are highest, environments are harsh and operations are nonstop.

Features

- Fast redundant ethernet ring with recovery time < 10ms (Elite Ring)
- Support SNMPv1/v2c/v3 & RMON network management
- Support Web-based, Telnet, Console, Utility configuration
- Supports IGMPv1/v2/v3 snooping, Quality of Service determined by port
- Supports port base/802.1Q VLAN and Dynamic VLAN Register Protocol (GVRP)
- Event notification by Email, SNMP trap and Relay Output
- Supports online port mirroring and IP security
- Multi Ring and Dual Homing support
- Port rate limiting and broadcast storm limiting
- Redundant dual low-voltage DC inputs (12 ~ 48VDC)
- Supports 802.3ad, LACP for optimum bandwidth utilization
- Port Trunking for optimum bandwidth utilization
- Long-haul transmission distance up to 30km (Fiber port)
- Support all LAN switches setting at the same time by the SUNIX commander
- Din-rail/Wall-mounting installation

Package List

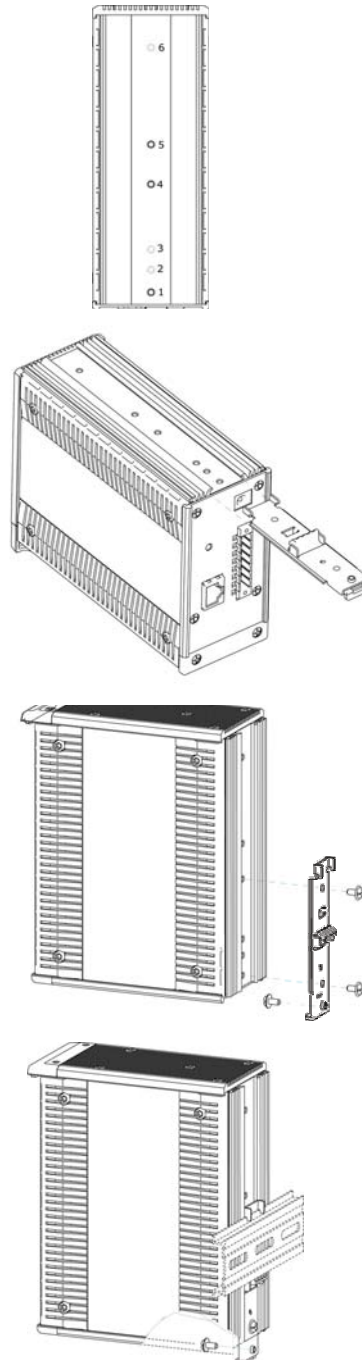
Please check if the following items are present and in good condition upon opening your package. Contact your vendor if any item is damaged or missing.

- Management Industrial Ethernet Switch
- Accessories
 - SUNIX Din Rail Accessory Package 1
 - Wall Mountable Accessory Package 1
 - Fiber Lid 2 (For ESW-80XX-G Series Model)
- SUNIX CD
- Quick Installation Guide (This Document)
- User Manual (In CD)

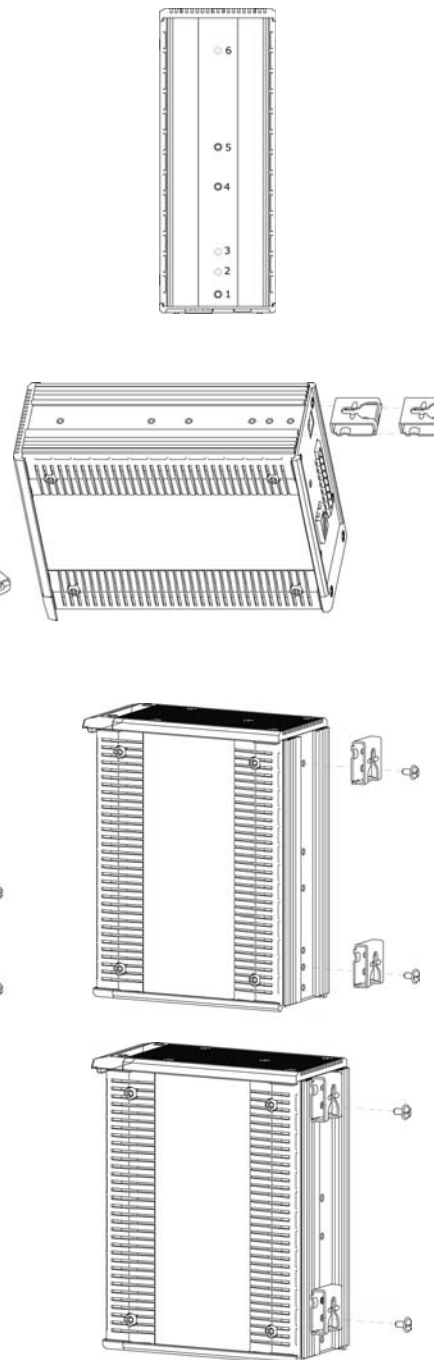
Model Specification

8082-GT	8 Ports 10/100Base-TX + 2 Ports 10/100/1000Base-TX
8082-GP	8 Ports 10/100Base-TX + 2 Ports 1000Base-FX (SFP Type)
8062-GM	6 Ports 10/100Base-TX + 2 Ports 1000Base-SX (Multi Mode)
8062-GS	6 Ports 10/100Base-TX + 2 Ports 1000Base-LX (Single Mode)
8062-GT	6 Ports 10/100Base-TX + 2 Ports 10/100/1000Base-TX
8062-TX	8 Ports 10/100Base-TX
8062-MM	6 Ports 10/100Base-TX + 2 Ports 100Base-FX (Multi Mode)
8062-SS	6 Ports 10/100Base-TX + 2 Ports 100Base-FX (Single Mode)

DIN-Rail Installation Step



Wall-Mounting Installation Step

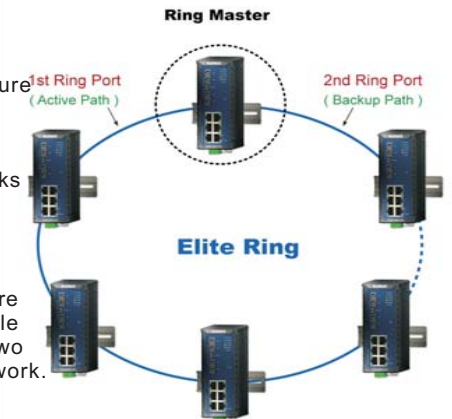


Elite-Ring Technology

Redundancy is always a primary consideration for developing secure and reliable industrial networks. SUNIX Managed Switches are equipped with Elite-Ring feature which provides industrial Networks with high-speed communication redundancy.

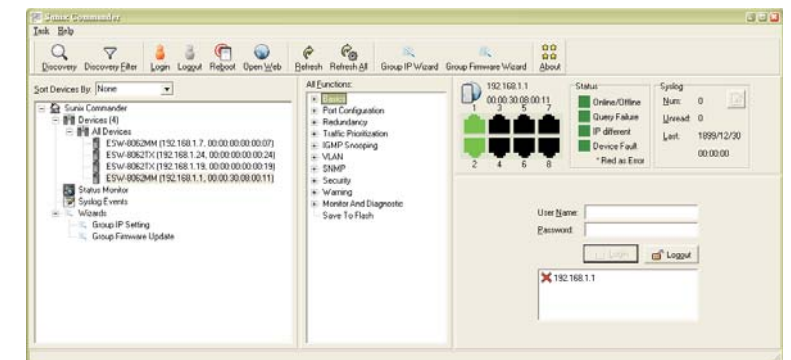
A network can recover in less than 10ms.

Elite-Ring employs a ring structure of either copper or fiber optic cable or combination of both by using two ports of each switch in a ring network.



SUNIX Comander Management Utility Software

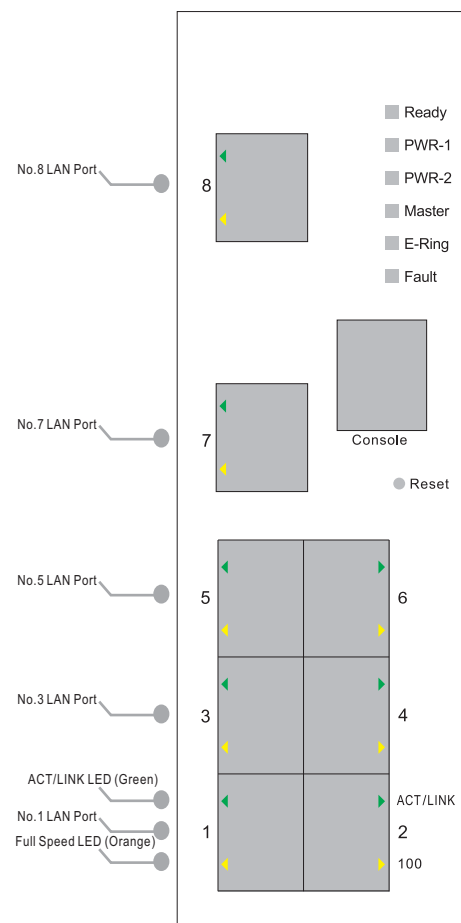
SUNIX Commander is a powerful Switch managed software designed by SUNIX Group. It could provide users set up all Switches in the ethernet by one time. Users could set up one group Switches IP Address, every kind of IEEE 802 Protocol, upgrade at the same time. SUNIX Commander a strong managing software lowers users' burden and saves time.



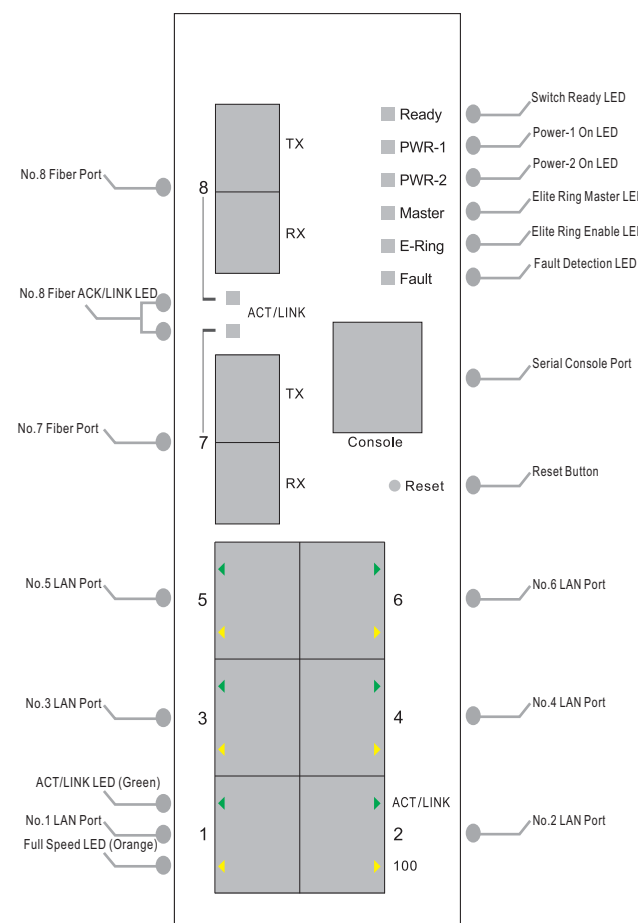


Industrial Management Ethernet Switches

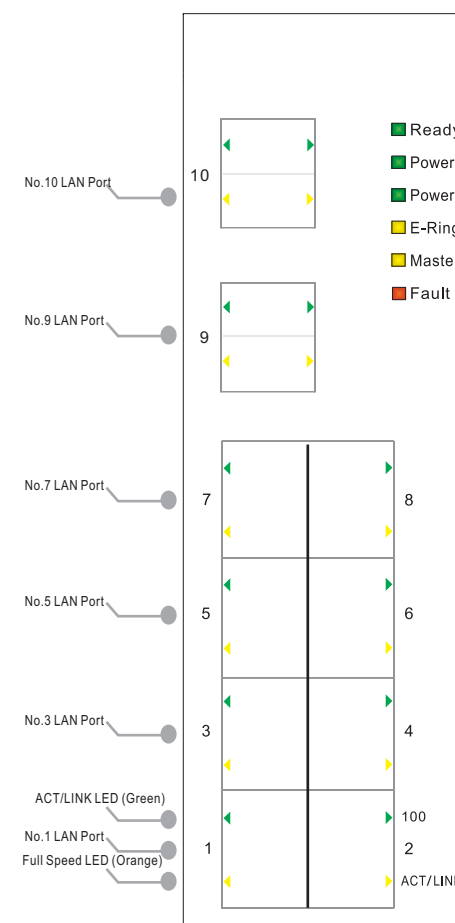
● ESW-8062 Front Panel



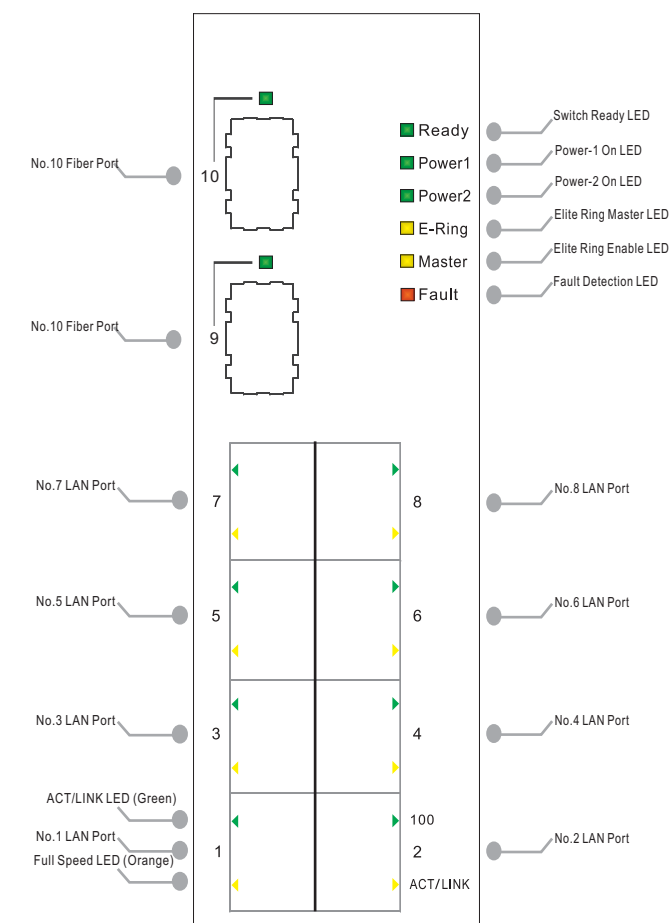
● ESW-8062 Front Panel (With Fiber Ports)



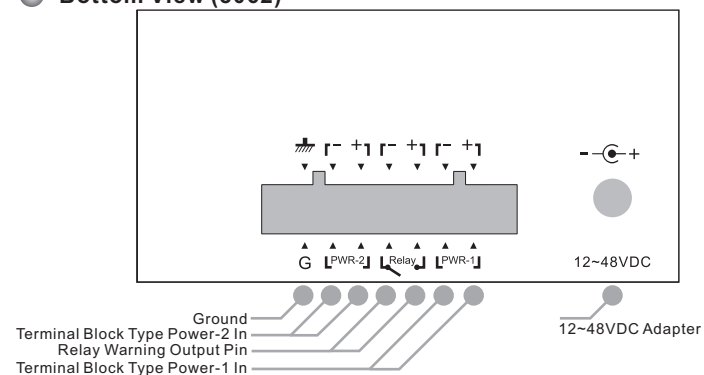
● ESW-8082-GT Front Panel



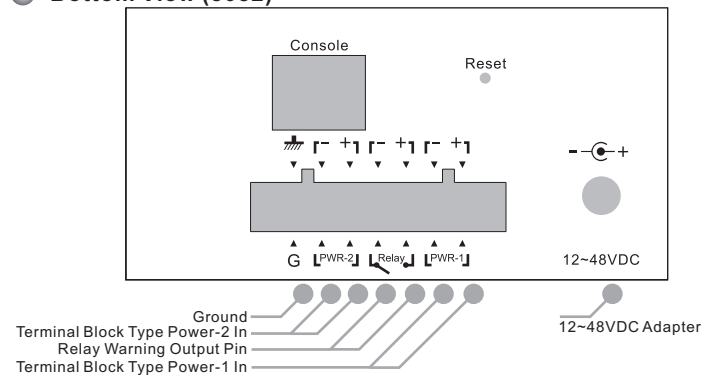
● ESW-8082-GP Front Panel



● Bottom View (8062)



● Bottom View (8082)



Copyright© by SUNIX Co, LTD.
All rights reserved.



TEL: +886-2-8913-1987
FAX: +886-2-8913-1986

Website: www.sunix-ncci.com.tw
E-mail: info@sunix-ncci.com.tw

Free Manuals Download Website

<http://myh66.com>

<http://usermanuals.us>

<http://www.somanuals.com>

<http://www.4manuals.cc>

<http://www.manual-lib.com>

<http://www.404manual.com>

<http://www.luxmanual.com>

<http://aubethermostatmanual.com>

Golf course search by state

<http://golfingnear.com>

Email search by domain

<http://emailbydomain.com>

Auto manuals search

<http://auto.somanuals.com>

TV manuals search

<http://tv.somanuals.com>