



i r i s



PATENT PENDING

The Product that Revolutionized the Industry



Improving People's Lives



Quickie® IRIS

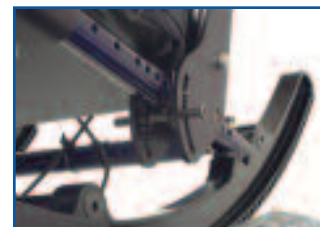
The IRIS's adjustable rocker carriage simply aligns the Center of Gravity (CG) over one short base frame

- Maximizes maneuverability, ambulation, and ease of push in tight spaces
- Provides ease of tilt, greater sense of stability for both user and caregiver



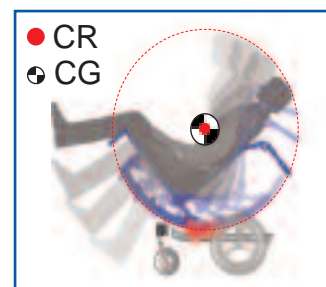
Maximum Adjustability, Smart Design

- 8 inches of width adjustment on one frame, without extra parts
- 7 inches of frame depth adjustment on ONE frame with just three seat rails
- Quickly changes with user's needs



Simple, Predictable Factory Set-up, Regardless of Seating

- Takes the guesswork out of aligning the Center of Gravity (CG) with the Center of Rotation (CR)
- Saves time, money, and aggravation for the user, caregiver, clinician, and provider



Clinical and Functional Benefits

- Can help reduce startle reflexes by aligning CG with CR
- 60 degrees of tilt, offering better pressure reduction
- Transit tested up to 350 lbs
- Foot activated wheel lock available for caregiver convenience
- 8 back angle adjustments in 5-degree increments (-5 to +30 degrees), resulting in seat-to-back angles of 85 to 120 degrees in 5-degree increments
- Depth adjustable in 1/2-inch increments, without losing washers
- 4 inches back height adjustment available
- Full range of recline, regardless of tilt position
- Foot propelling set-up available

IRIS SPECIFICATIONS:

Degrees of Tilt	-5° to 50°, 0° to 55°, 5° to 60°	
Frame Width Range	14" to 22"	
Frame Depth Range	15" to 22"	
Seat to floor height	14.5" to 20.5"	
Seat to floor height w/ drop seat	12.5" to 18.5"	
Weight Capacity	Std:	250 Lbs
	Heavy Duty:	350 Lbs
Product Weight*	32 lbs	
Back Height	Angle adj. stroller handle	16" to 20"
	Standard stroller handle	18", 21", 24"
Back Options	Stroller Handle Back Posts (Low, Medium, Tall)	
	Height adjustable with stroller handle, & Reclining	
Tubing Diameter	Seat rail:	1"
	Back Post:	1"
	Height Adjustable Backrest:	1" and 7/8"
Warranty	Frame:	Lifetime
	Accessories:	1 year
Hanger Options	60°, 70°, 80°, 90°	
	(Swing Away and Heavy Duty), ELR, ALR	
Transit Option	Available on Standard and Heavy Duty	
Accessories	See Order Form	
Overall Length**	32.5"	
Overall Width	Frame width + 8"	

* Without: amrest, footrest, wheels and anti-tip

** Includes anti-tips and footrests

Free Manuals Download Website

<http://myh66.com>

<http://usermanuals.us>

<http://www.somanuals.com>

<http://www.4manuals.cc>

<http://www.manual-lib.com>

<http://www.404manual.com>

<http://www.luxmanual.com>

<http://aubethermostatmanual.com>

Golf course search by state

<http://golfingnear.com>

Email search by domain

<http://emailbydomain.com>

Auto manuals search

<http://auto.somanuals.com>

TV manuals search

<http://tv.somanuals.com>