

SUUNTO COMBOS AND MECHANICAL INSTRUMENTS

ASSEMBLY INSTRUCTIONS

Combo Consoles I Console Compasses SK-8
Depth Gauge SM-16 I Pressure Gauge SM-36

SUUNTO COMBO CONSOLES

The Suunto combo consoles for recreational use allow you to create a personal console according to your own specific needs. Analog gauges, dive computers and compasses fit together like building blocks.

Suunto console compasses

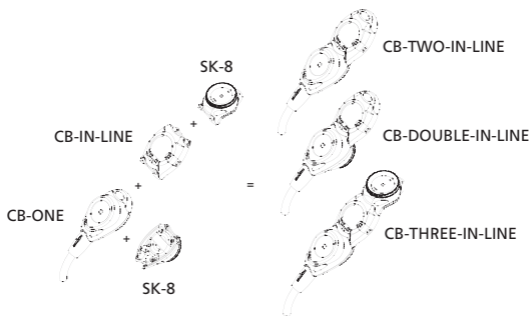
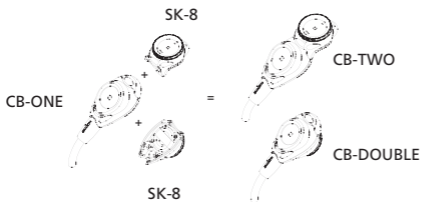
The Suunto SK-8 is available in two models, each with northern and southern hemisphere balancing options. The SK-8 Console Mount, front attaches to the top of the combo module or the Cobra dive computer. The SK-8 Console Mount, back attaches to the back side of the combo module.

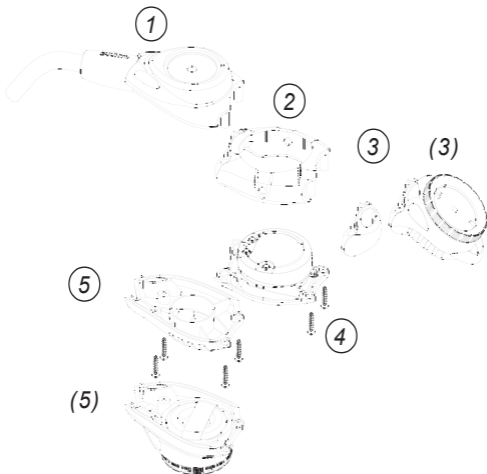
Suunto mechanical gauges

There are four Suunto SM-16 depth gauge models: 45 m, 70 m, 150 ft and 230 ft.

There are two Suunto SM-36 pressure gauge models: 300 bar and 4000 psi.

Adding SM-16 and SM-36 gauges to combos always requires a CB-In-Line module.



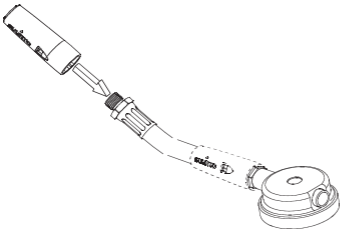


1. CB-ONE module front cover with SM-36 pressure gauge in place (see section CB-ONE Module assembly)
2. CB-IN-LINE module front cover
3. CB-end piece or SK-8 Console Mount, front compass (optional)
4. CB-IN-LINE module back cover with instrument
5. CB-ONE module back cover or SK-8 Console Mount, back compass (optional)

CB-ONE MODULE ASSEMBLY

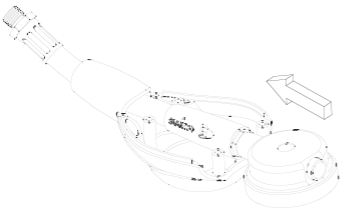
The CB-ONE Module is designed to fit the Suunto SM-36 analog pressure gauges.

Before assembling the CB-ONE module the hose cover needs to be fitted on the pressure hose. The hose cover ensures that the SM-36 pressure gauge fits properly on the CB-ONE module.



If the Suunto Quick Release is used, see section 'CB-ONE module assembly with Quick Release.'

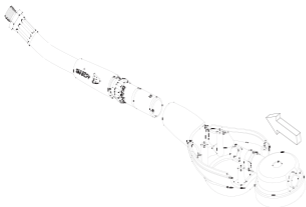
After attaching the hose cover the pressure hose and gauge are assembled on the CB-ONE front cover according to the picture.



After the pressure gauge is in place, the CB-ONE back cover (or alternatively the CB-71/SK-8 Console Mount, back compass) is attached with four screws.

CB-ONE MODULE ASSEMBLY WITH QUICK RELEASE

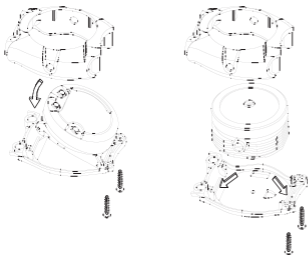
If the Suunto Quick Release is used, the hose cover should be attached on the high pressure hose below the female end of the Quick Release. The male end is attached to the pressure gauge which is then fitted onto the CB-ONE front cover as shown below.



CB-IN-LINE MODULE ASSEMBLY

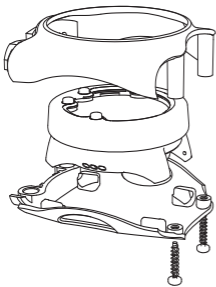
The CB-IN-LINE module fits the Suunto Vyper, Vyper Air, HeLO₂ and Zoop dive computers or the SM-16 depth gauge.

The Vyper locks into place on the IN-LINE module back cover. For the other instruments, lugs on the back cover aid alignment.



SUUNTO ZOOP NOVO AND VYPER NOVO COMBO MOUNT ASSEMBLY

The combo mount for Suunto Zoop Novo and Vyper Novo locks into place on the IN-LINE module back cover.



BEFORE USE

Depth gauge

Before diving, check the position of the depth indicating pointer. Atmospheric conditions (altitude, temperature) may cause misalignment. Turn the adjustment screw located on the right side of the depth gauge to align the pointer to zero. The adjustment is to be made at the temperature of usage. Repeated unnecessary adjustments may cause excessive wear to the seals and eventual leakage.

CAUTION!

Do not attempt to adjust the water entry port located at the left side of gauge. Tampering with the port can cause damage to internal components. Do not pressure test gauge in air. Always immerse the gauge in water while pressure testing it.

Pressure gauge

The hose has an end fitting with 7/16" 20 UNF-thread. If your regulator has a different thread size in the high pressure (HP-output) port, ask your dealer for the correct adapter. Always inspect the O-ring at the male thread to be sure it is clean and undamaged before connecting it to the regulator.

Always turn your air supply on slowly. Always turn the pressure gauge dial face away from your face when turning on the air supply.

Do not overtighten the hose at the gauge. The fitting is pressure resistant even when tightened with fingers.

SERVICE AND CARE

The instruments must be serviced by an authorized dealer every second year or after 200 dives (whichever comes first).

Avoid subjecting the gauges to excessive shocks such as dropping or hitting against an immovable object. Do not subject the gauges to pressures beyond their maximum range. Temperature extremes can be damaging. In general, the gauges should not be exposed to temperatures to which you would not expose yourself.

⚠ CAUTION: After use, rinse the gauges or the console with fresh water and store them out of direct sunlight, in a dry place at room temperature.

⚠ CAUTION: Do not attempt to clean the gauges with anything other than water. Use of cleaning agents or compressed air can cause permanent damage. Inserting objects into the water entry port of the depth gauge or the pressure relief valve opening of the pressure gauge can damage internal components.

Before prolonged storage, the instruments should be removed from the console, rinsed with fresh water and stored separately.

⚠ CAUTION: Do not attempt to disassemble the gauges. Special tools and training are required.

TECHNICAL SPECIFICATIONS

The Suunto SM-16 complies with EN 13319. The tolerances are:

At 3m +0.8 / -0.4 m

At 6m +0.8 / -0.4 m

At 9m ±0.8 m

At 15m +1/ -1.2 m

At 30m +1/ -1.2 m

At 45m +1/ -1.5 m

At 60m +1 / -1.5 m

The Suunto SM-36 complies with EN 250. The tolerances are:

At 40 bar ± 5 bar

At 100 bar ± 10 bar

At 200 bar ± 10 bar

At 300 bar ± 10 bar

SM-16 Operating temperature 0° to 40° C (32° to 104° F)

SM-36 Operating temperature 0° to 40° C (32° to 104° F)



SUUNTO CUSTOMER SUPPORT

1. www.suunto.com/support
www.suunto.com/mysuunto
2.

AUSTRALIA	+61 1800 240 498
AUSTRIA	+43 720 883 104
CANADA	+1 800 267 7506
CHINA	+86 010 84054725
FINLAND	+358 9 4245 0127
FRANCE	+33 4 81 68 09 26
GERMANY	+49 89 3803 8778
ITALY	+39 02 9475 1965
JAPAN	+81 3 4520 9417
NETHERLANDS	+31 1 0713 7269
NEW ZEALAND	+64 9887 5223
RUSSIA	+7 499 918 7148
SPAIN	+34 91 11 43 175
SWEDEN	+46 8 5250 0730
SWITZERLAND	+41 44 580 9988
UK	+44 20 3608 0534
USA	+1 855 258 0900

**SUUNTO**

© Suunto Oy 11/2005, 09/2006, 11/2011, 3/2015, 4/2016. All rights reserved.

Suunto is a registered trademark of Suunto Oy.

Free Manuals Download Website

<http://myh66.com>

<http://usermanuals.us>

<http://www.somanuals.com>

<http://www.4manuals.cc>

<http://www.manual-lib.com>

<http://www.404manual.com>

<http://www.luxmanual.com>

<http://aubethermostatmanual.com>

Golf course search by state

<http://golfingnear.com>

Email search by domain

<http://emailbydomain.com>

Auto manuals search

<http://auto.somanuals.com>

TV manuals search

<http://tv.somanuals.com>