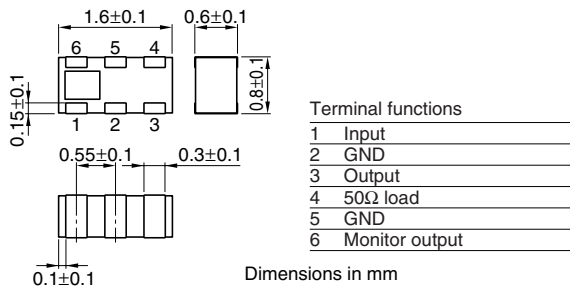


# Multilayer Chip Directional Couplers For PCS/Tx

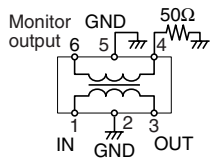
Conformity to RoHS Directive

## HHM Series HHM2203SA2

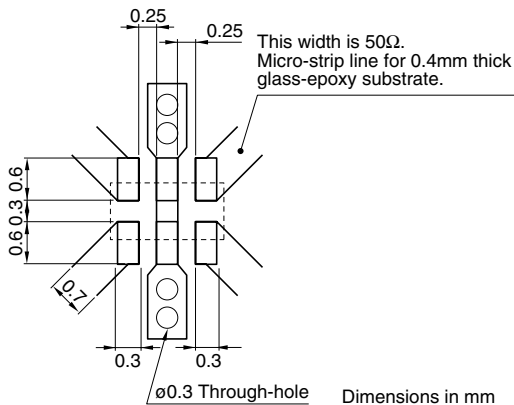
### SHAPES AND DIMENSIONS



### CIRCUIT DIAGRAM



### RECOMMENDED PC BOARD PATTERNS



### ELECTRICAL CHARACTERISTICS

Frequency range	1850 to 1910MHz	
Coupling factor	-12.5±1.0dB	
Insertion loss	0.55dB max.*1	
	0.60dB max.*2	
Isolation	25dB min.	
VSWR	1.5 max.	
Temperature range	Operating	-40 to +85°C
	Storage	-40 to +85°C

\*1 25°C

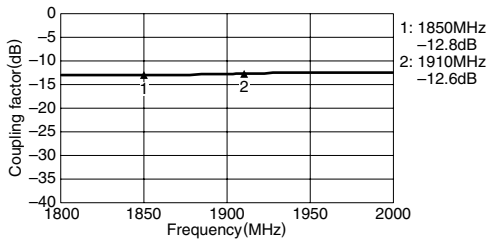
\*2 Operating temperature

• Conformity to RoHS Directive: This means that, in conformity with EU Directive 2002/95/EC, lead, cadmium, mercury, hexavalent chromium, and specific bromine-based flame retardants, PBB and PBDE, have not been used, except for exempted applications.

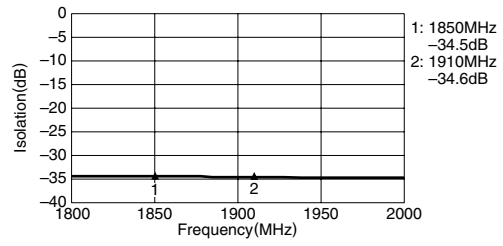
• All specifications are subject to change without notice.

### FREQUENCY CHARACTERISTICS

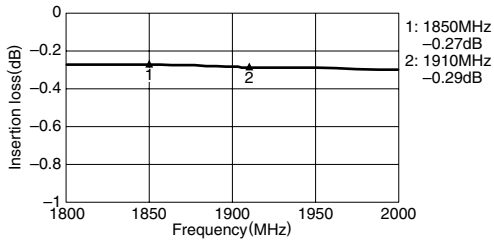
#### COUPLING



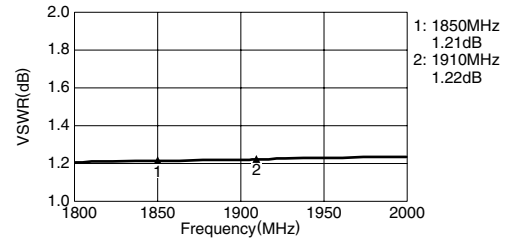
#### ISOLATION



#### INSERTION LOSS



#### VSWR



• All specifications are subject to change without notice.

## Free Manuals Download Website

<http://myh66.com>

<http://usermanuals.us>

<http://www.somanuals.com>

<http://www.4manuals.cc>

<http://www.manual-lib.com>

<http://www.404manual.com>

<http://www.luxmanual.com>

<http://aubethermostatmanual.com>

Golf course search by state

<http://golfingnear.com>

Email search by domain

<http://emailbydomain.com>

Auto manuals search

<http://auto.somanuals.com>

TV manuals search

<http://tv.somanuals.com>