

**Wireless Laser
Rechargeable
Notebook
Mouse**



Targus®

USER GUIDE



CAUTION

LASER RADIATION. DO NOT STARE INTO THE BEAM OR VIEW DIRECTLY WITH OPTICAL INSTRUMENTS. CLASS I LASER PRODUCT.

NEVER POINT A LASER BEAM INTO A PERSON'S EYES OR VIEW A LASER BEAM DIRECTLY, AS PROLONGED EXPOSURE CAN BE HAZARDOUS TO THE EYES.

MOMENTARY EXPOSURE FROM A LASER POINTER, SUCH AS AN INADVERTENT SWEEP OF THE LIGHT ACROSS A PERSON'S EYES, MAY CAUSE TEMPORARY FLASH BLINDNESS SIMILAR TO THE EFFECT OF A CAMERA FLASH BULB. ALTHOUGH THIS CONDITION IS TEMPORARY, IT CAN BECOME MORE DANGEROUS IF THE EXPOSED PERSON IS ENGAGED IN A VISION-CRITICAL ACTIVITY SUCH AS DRIVING.

TARGUS WIRELESS LASER RECHARGEABLE NOTEBOOK MOUSE

Introduction

Congratulations on your purchase of the Targus wireless laser rechargeable notebook mouse. This ergonomically designed mouse uses a radio frequency (RF) link that enables you to use the mouse anywhere within 1 m of its receiver. No line-of-sight between the mouse and its receiver is required.

In addition to this user's guide this package contains:

- Mouse
- USB receiver
- 2 AAA rechargeable batteries
- USB extension cable
- USB charge cable
- Carrying pouch

System Requirements

Hardware

- PC
- Mac
- USB interface

Operating System

- Windows® 98/2000/Me/XP
- Windows Vista™
- Mac: OS 10.x and above



NOTE: THE THIRD BUTTON AND THE SCROLLING WHEEL ONLY WORK WITH THE OPERATING SYSTEMS LISTED ABOVE. IF YOU USE THE MOUSE WITH A DIFFERENT OPERATING SYSTEM, IT WILL LOSE ITS ENHANCED FEATURES AND FUNCTION AS A STANDARD, TWO-BUTTON MOUSE.

Connecting the Mouse Receiver

To connect the mouse receiver:

- 1 Plug the USB receiver into an available USB port on your computer.
- 2 Your computer's operating system identifies the receiver and begins installing the default driver.

Follow any on-screen procedures to complete the default driver installation.

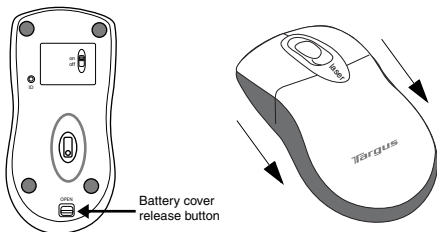
Using the Mouse

Installing the Batteries

- 1 If the mouse is on, slide the on/off switch on the bottom of the mouse to the "off" position.
- 2 Remove the battery cover from the top of the mouse by pressing the battery cover hinge located on the bottom of the mouse and sliding it off.



NOTE: THE BATTERY COVER IS ALSO THE TOP COVER OF THE MOUSE.



- 3 Insert the supplied batteries, making sure that the positive (+) and negative (-) ends of each battery match the polarity indicators inside the battery housing.



WARNING: WHEN REPLACING THE BATTERIES, USE ONLY HEAVY-DUTY NIMH BATTERIES. RECHARGING ALKALINE BATTERIES MAY DAMAGE THE MOUSE.

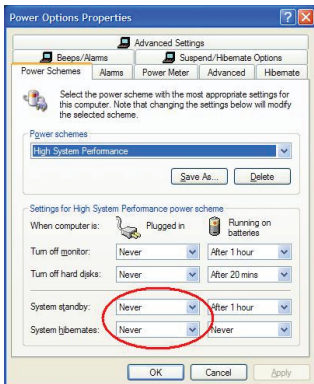
AVOID MIXING NEW AND USED BATTERIES IN A DEVICE.

- 4 Slide the battery cover back into position until it “clicks” firmly into place.
- 5 Turn on the mouse by sliding the on/off switch on the bottom of the mouse to the “on” position.

The optical sensor, located on the bottom of the mouse, illuminates.

Operating Notes for Wireless Mice with Recharging Feature via USB Cable

1. Charge the mouse for at least 8 hours before using it. And please make sure only rechargeable batteries (the ones that come with your product) are used.
2. Your computer needs to stay powered on for the mouse to charge. Follow these steps to prevent your computer from going in to Standby or Hibernate:
 - a) Click "Start"
 - b) Click "Control Panel"
 - c) Click "Performance and Maintenance" (Skip in Classic View)
 - d) Click "Power Options"
 - e) Make sure "System Standby:" and "System Hibernates:" under "Plugged in" are set to "Never"
3. If you use your notebook computer's LCD monitor, please do not close the lid. (Please ignore this step if you use an external monitor with your notebook lid closed.)
4. If your mouse does not respond after a period of inactivity, please wake it up by pressing one of the buttons on the mouse or moving the mouse around.



Charging the Batteries

For best results, you should charge the mouse at least 8 hours before using it. You can do this via the supplied USB charge cable. To do this:

- 1 Connect the cable's USB connector into an available USB port on your computer
- 2 Connect the other end to the mouse.



NOTE: TO CONTINUOUSLY CHARGE THE MOUSE VIA THE USB CHARGE CABLE, YOUR COMPUTER MUST BE ON AND AWAKE. FOR BEST RESULTS, TURN OFF YOUR COMPUTER'S POWER MANAGEMENT FEATURE WHILE CHARGING THE MOUSE.

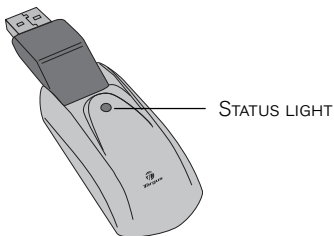
Establishing a Communications Link

The mouse has 256 identification codes that allow the mouse and its receiver to operate without interference from other radio frequency devices.

After your computer detects the USB receiver and the driver is installed, you must establish a communications link between the mouse and its receiver **BEFORE** you can use the mouse. To establish this link, you need to set the identification code so that the mouse works properly. To do this, follow the instructions below:

Make sure that your computer is turned on and has detected the USB receiver before you establish a communications link.

- 1 Press and release the link button located on the bottom of the receiver.



Receiver

The receiver's status light blinks when the receiver is activated.

- 2 Press and release the link button, located on the bottom of the mouse.

You are now ready to use the mouse.

Mouse Power Management

To power the mouse on and off, slide the on/off switch at the bottom of the mouse to the desired position.

When power is on, the mouse goes into "sleep mode" after 8 minutes of no use. To activate the mouse, move the mouse or press any key.

To save battery power, turn off the mouse while traveling.

Operating Hints

For optimal performance and RF reception:

- Place the receiver at least 20cm away from all electrical devices, such as your monitor, speakers or external storage devices.
- If necessary, use the supplied extension cable to keep the receiver away from the computer. Plug the receiver into the extension cable, and the extension cable to the computer.
- Avoid using the mouse on a metal surface. Metals, such as iron, aluminum or copper, shield the radio frequency transmission and may slow down the mouse's response time or cause the mouse to fail temporarily.
- The mouse will enter a suspend mode at the same time your computer does. To activate the mouse, simply move the mouse.
- If your computer has a metal case that contains aluminum or magnesium, use the mouse to the side. The display panel may interfere with the radio frequency signal if you use the mouse directly in front of the computer.
- Never use the mouse on a glass or mirrored surface as these surfaces will cause the mouse to fail temporarily.
- To maximize battery life, use the mouse on a white, or light colored surface. Dark surfaces cause the mouse's light emitter diode (LED) light to glow brighter, which causes the battery to discharge more rapidly.

Comfortable Usage

Research suggests that physical discomfort and injury to nerves, tendons, and muscles may be related to repetitive motion, an improperly set up work area, incorrect body posture, and poor work habits.

To reduce the risk of injury, follow these precautions:

- Stand, stretch, and move around several times every hour.
- Switch hands while performing tasks. Use shortcut keys to avoid repetitive or awkward mouse movements.
- Relax your shoulders and keep your elbows at your sides. Adjust the keyboard's position so that you don't have to stretch to reach it.
- Adjust your position so that you don't have to bend your wrists to type; avoid placing your wrists on a sharp edge.

If you feel discomfort or numbness in your hands, wrists, arms, shoulders, neck, or back while typing, consult a qualified medical professional.

Troubleshooting

What do I do if the mouse does not work?

- Make sure that the polarity of the batteries is correct. The positive (+) and negative (-) ends of each battery must match the positive (+) and negative (-) connections in the battery housing.

- Check that the receiver's USB connector is firmly attached to the USB port on your computer.
- Verify that the device drivers are installed.
- Make sure you have established a radio link between the mouse and its receiver. See "Establishing a Communications Link".

When I use the mouse, other wireless devices work more slowly or fail temporarily – what should I do?

- The mouse may cause interference with any cordless, radio-based device that operates at 27 MHz, such as a telephone, baby monitor, or toy. To reduce interference, move the mouse's receiver and the base unit of the affected device as far away from each other as possible.

What do I do if the response time of the mouse is slow or the mouse intermittently stops working?

- Increase the distance between the mouse's receiver and the rest of your computer equipment.
- Increase the distance between the mouse's receiver and the base units of other wireless devices.
- Turn off any wireless devices and their base units that are near the mouse's receiver.
- If you are using the mouse on a metal surface, move it and the receiver to a non-metal surface. Metals, such as iron, aluminum or copper, shield the radio frequency transmission and may slow down the mouse's response time or cause the mouse to fail temporarily.

I can't use the mouse while another RF mouse is in use – what should I do?

- Reset the identification code. See “Establishing a Communications Link”.

Technical Support

For technical questions, please visit:

US Internet: www.targus.com/support.asp

Australia Internet: www.targus.com.au

Email: infoaust@targus.com

Telephone: 1800-641-645

New Zealand Telephone: 0800-633-222

Product Registration

Targus recommends that you register your Targus accessory shortly after purchasing it. Go to:

<http://www.targus.com/registration.asp>. You will need to provide your full name, email address, phone number, and company information (if applicable).

Warranty

Targus warrants this product to be free from defects in materials and workmanship for one year. If your Targus accessory is found to be defective within that time, we will promptly repair or replace it. This warranty does not cover accidental damage, wear and tear, or consequential or incidental loss. Under no conditions is Targus liable for loss of, or damage to a devices nor loss of, or damage to, programs, records, or data; nor any consequential or incidental damages, even if Targus has been informed of their possibility. This warranty does not affect your statutory rights.

Regulatory Compliance

This device complies with Part 15 of the FCC Rules. Operation is subject to the following two conditions: (1) This device may not cause harmful interference, and (2) This device must accept any interference received, including interference that may cause undesired operation.

FCC Statement Tested to Comply

This equipment has been tested and found to comply with the limits of a Class B digital device, pursuant to Part 15 of the FCC Rules. These limits are designed to provide reasonable protection against harmful interference in a residential installation. This equipment generates, uses, and can radiate radio frequency energy and if not installed and used in accordance with the instructions, may cause harmful interference to radio communications. However, there is no guarantee that interference will not occur in a particular installation. If this equipment does cause harmful interference to radio or television reception, which can be determined by turning the equipment off and on, the user is encouraged to try to correct the interference by one or more of the following measures:

- Reorient or relocate the receiving antenna;
- Increase the separation between the equipment and receiver;
- Connect the equipment into an outlet on a circuit different from that to which the receiver is connected;
- Consult the dealer or an experienced radio/TV technician for help.

Changes or modifications not authorized by the party responsible for compliance could void the user's authority to operate this product.

Declaration of Conformity

Hereby, Targus, declares that this device is in compliance with the essential requirements and other relevant provisions of Directive 1999/5/EC.

Microsoft, Windows, and Windows Vista are either registered trademarks or trademarks of Microsoft Corporation in the United States and/or other countries. All trademarks and registered trademarks are the properties of their respective owners. All rights reserved.

Features and specifications subject to change without notice. © 2006, Targus Group International, Inc. and Targus, Inc., Anaheim, CA 92806 USA.



Targus®

Visit our Website at www.targus.com Features and specifications subject to change without notice.
© 2006 Targus Group International, Inc. and Targus, Inc.



Free Manuals Download Website

<http://myh66.com>

<http://usermanuals.us>

<http://www.somanuals.com>

<http://www.4manuals.cc>

<http://www.manual-lib.com>

<http://www.404manual.com>

<http://www.luxmanual.com>

<http://aubethermostatmanual.com>

Golf course search by state

<http://golfingnear.com>

Email search by domain

<http://emailbydomain.com>

Auto manuals search

<http://auto.somanuals.com>

TV manuals search

<http://tv.somanuals.com>