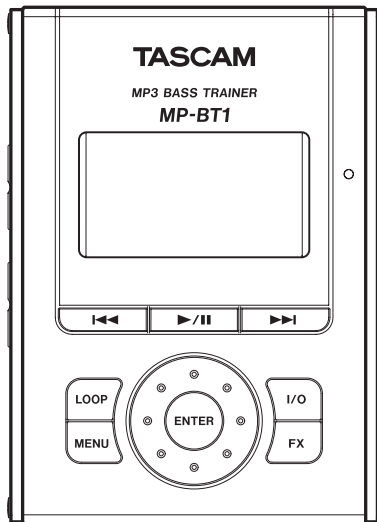


MP-BT1

MP3 Bass Trainer



This device has a serial number located on the rear panel. Please record it and retain it for your records.

Serial number:

Quick Start Guide

IMPORTANT SAFETY PRECAUTIONS



CAUTION
RISK OF ELECTRIC SHOCK
DO NOT OPEN



CAUTION: TO REDUCE THE RISK OF ELECTRIC SHOCK, DO NOT REMOVE COVER (OR BACK). NO USER-SERVICEABLE PARTS INSIDE. REFER SERVICING TO QUALIFIED SERVICE PERSONNEL.



The lightning flash with arrowhead symbol, within equilateral triangle, is intended to alert the user to the presence of uninsulated "dangerous voltage" within the product's enclosure that may be of sufficient magnitude to constitute a risk of electric shock to persons.



The exclamation point within an equilateral triangle is intended to alert the user to the presence of important operating and maintenance (servicing) instructions in the literature accompanying the appliance.

FOR U.S.A.

TO THE USER

This equipment has been tested and found to comply with the limits for a Class B digital device, pursuant to Part 15 of the FCC Rules. These limits are designed to provide reasonable protection against harmful interference in a residential installation. This equipment generates, uses, and can radiate radio frequency energy and, if not installed and used in accordance with the instruction manual, may cause harmful interference to radio communications. However, there is no guarantee that interference will not occur in a particular installation. If this equipment does cause harmful interference to radio or television reception, which can be determined by turning the equipment off and on, the user is encouraged to try to correct the interference by one or more of the following measures.

- Reorient or relocate the receiving antenna.
- Increase the separation between the equipment and receiver.
- Connect the equipment into an outlet on a circuit different from that to which the receiver is connected.
- Consult the dealer or an experienced radio/TV technician for help.

CAUTION

Changes or modifications to this equipment not expressly approved by TEAC CORPORATION for compliance could void the user's authority to operate this equipment.

WARNING: TO PREVENT FIRE OR SHOCK HAZARD, DO NOT EXPOSE THIS APPLIANCE TO RAIN OR MOISTURE.

IMPORTANT SAFETY INSTRUCTIONS

- 1 Read these instructions.
- 2 Keep these instructions.
- 3 Heed all warnings.
- 4 Follow all instructions.
- 5 Do not use this apparatus near water.
- 6 Clean only with dry cloth.
- 7 Do not block any ventilation openings. Install in accordance with the manufacturer's instructions.
- 8 Do not install near any heat sources such as radiators, heat registers, stoves, or other apparatus (including amplifiers) that produce heat.
- 9 Do not defeat the safety purpose of the polarized or grounding-type plug. A polarized plug has two blades with one wider than the other. A grounding type plug has two blades and a third grounding prong. The wide blade or the third prong are provided for your safety. If the provided plug does not fit into your outlet, consult an electrician for replacement of the obsolete outlet.
- 10 Protect the power cord from being walked on or pinched particularly at plugs, convenience receptacles, and the point where they exit from the apparatus.
- 11 Only use attachments/accessories specified by the manufacturer.
- 12 Use only with the cart, stand,

tripod, bracket, or table specified by the manufacturer, or sold with the apparatus. When a cart is used, use caution when moving the cart/apparatus combination to avoid injury from tip-over.



- 13 Unplug this apparatus during lightning storms or when unused for long periods of time.
- 14 Refer all servicing to qualified service personnel. Servicing is required when the apparatus has been damaged in any way, such as power-supply cord or plug is damaged, liquid has been spilled or objects have fallen into the apparatus, the apparatus has been exposed to rain or moisture, does not operate normally, or has been dropped. Do not expose this apparatus to drips or splashes.

- Do not place any objects filled with liquids, such as vases, on the apparatus.
- Do not install this apparatus in a confined space such as a book case or similar unit.
- The apparatus draws nominal non-operating power from the AC outlet with its **STANDBY/ON** in the Standby position.
- The apparatus should be located close enough to the AC outlet so that you can easily grasp the power cord plug at any time.
- An apparatus with Class I construction shall be connected to an AC outlet with a protective grounding connection.
- Batteries (battery pack or batteries installed) should not be exposed to excessive heat such as sunshine, fire or the like.
- Excessive sound pressure from earphones and headphones can cause hearing loss.

SAFETY INFORMATION

For China

产品有毒有害物质或元素的名称及含量

机种: MP-BT1		有毒有害物质或元素					
	品名	铅 (Pb)	汞 (Hg)	镉 (Cd)	六价铬 (Cr6+)	多溴联苯 (PBB)	多溴二苯醚 (PBDE)
1	CHASSIS部份	○	○	○	○	○	○
2	PCB Assy部份	×	○	○	○	○	○
3	附属品部份	○	○	○	○	○	○
4	SEAL部份	○	○	○	○	○	○
5	包装部份	○	○	○	○	○	○
6	Battery部份	○	○	○	○	○	○

○：表示该有毒有害物质在该部件所有均质材料中的含量均在 SJ/T11363-2006 标准规定的限量要求以下。

×：表示该有毒有害物质至少在该部件的某一均质材料中的含量超出 SJ/T11363-2006 标准规定的限量要求。

(针对现在代替技术困难的电子部品及合金中的铅)

Table of Contents

1–Introduction	6	4–Playing bass with the MP-BT1	15
Warnings about the rechargeable battery	6	Connecting a bass	15
Getting detailed usage of the MP-BT1	7	Practicing with tracks as they play.....	15
About this manual.....	8	Using the built-in effects.....	16
About the power supply.....	8		
Reset hole.....	9		
2–Preparing tracks	10		
Copying tracks to a computer	10		
Turning the power on and off	10		
Connecting to a computer.....	11		
Copying tracks from a computer	11		
3–Playing back tracks	12		
Preparing to listen	12		
Playing back tracks on the MP-BT1.....	12		
Changing the playback tempo	13		
Looping a selected passage	14		

1-Introduction

Thank you for purchasing the TASCAM MP-BT1.

This unit is ideal for use when practicing bass. If you run into a phrase on a recording that is too difficult for you to learn by ear at ordinary speed, you can play and loop the music at a slower speed to study the part. Furthermore, the dedicated bass input allows you to use the unit's built-in effects as you play along with the music. You can also transfer music easily from a computer to the MP-BT1.

NOTE

An Owner's Manual with detailed instructions about the MP-BT1's functions is stored inside the unit's memory in PDF format. (You can also download this manual from www.tascam.com.) You will need to have software installed on your computer that can open PDF documents to read this manual. If you need this software, Adobe Reader software can be downloaded for free from www.adobe.com.

Warnings about the rechargeable battery

This product uses a built-in lithium ion battery. Always follow the precautions below in order to avoid overheating, fire, smoke, leakage and other problems.

- **Always use the designated AC adapter and/or USB cable.** When operating or recharging the unit with ordinary AC power. Do not use any AC adapter or USB cable other than those designated for use with the unit. Overheating the unit can cause injury, burns, fire, stains and/or rupture of the battery.
- **Do not put the unit in a fire.** Do not recharge or leave the unit by a fire, in direct sunlight or other hot location.
- **Do not disassemble.** Taking apart the unit could lead to an electrical shock. Please seek assistance from the store where the unit was purchased or contact a TASCAM/TEAC service center for rechargeable battery replace-

1-Introduction

ment, unit inspection or repair. When you dispose of the unit, however, please follow the procedures in the Owner's Manual to remove and recycle the internal battery.

- **Do not touch leaking fluid with bare skin** if the rechargeable battery leaks. **Battery fluid may cause loss of eyesight if it gets in an eye.** Wash the eye (do not rub) with clean water immediately and contact a physician as soon as possible. Battery fluid on the body or clothing can harm or burn the skin, so wash well with clean water immediately and contact a physician as soon as possible. **If a leakage occurs, please contact a TASCAM/TEAC service center.**

Getting detailed usage of the MP-BT1

The MP-BT1 has an Owner's Manual in its internal memory in PDF format. The Owner's Manual covers all the operations of the unit in detail, while the included Quick Start Guide helps you for the basic operations.

Download from [Www.Somanuals.com](http://www.somanuals.com). All Manuals Search And Download.

How to get the Owner's Manual:

1. **Connect the MP-BT1 to your computer with the included USB cable** (see "Connecting to a computer" on page 11 of the Quick Start Guide for detail).
2. **Click the folder "MANUAL" in the "MP-BT1" shown as an external drive on your computer.**

NOTE

You need Adobe Reader to read the Owner's Manual. Adobe Reader is free application that can be downloaded from <http://www.adobe.com>.

We recommend backing up the Ownre's Manual into other media such as your computer's hard disk or writable CD disc.

If you erase the Owner's Manual by accident, you can download it from our website at [http://www.teac.com./](http://www.teac.com/).

1-Introduction

About this manual

When we refer to a key or connector or control on the MP-BT1, the typeface looks like this: **PLAY**.

When we refer to items shown on the display, the typeface looks like this: **MENU**.

About the power supply

The MP-BT1 uses a built-in lithium ion battery that can be recharged by connecting the unit to a computer with the USB cable. You can also use an AC adapter (sold separately) to power the unit and recharge the battery.

NOTE

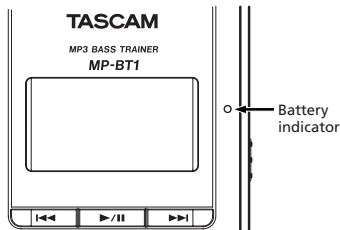
When you purchase the MP-BT1, the battery is not fully charged. Please charge it before use or use it with an AC adapter (sold separately).

- To charge the battery using a computer, connect the unit to the computer using the

included USB cable and turn the computer on if it is off.

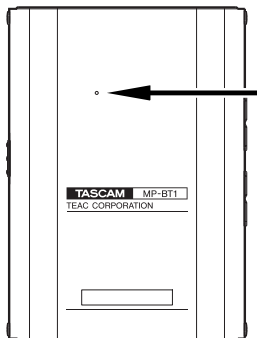
Please see “2-Preparing tracks” for instructions about disconnecting the USB cable.

- To use an AC adapter (sold separately), plug it into the **DC IN 5V** jack.
- The indicator at the right side of the display shows the battery’s charging status. It lights orange while charging and goes out when charging is complete.



Reset hole

If the MP-BT1 starts to operate incorrectly, insert the end of a paper clip or similar object into this hole to press the System Reset Button inside. Pressing this button turns the power OFF.



NOTE

Do not press the System Reset Button if the unit is operating normally.

2-Preparing tracks

The following sections explain how to copy tracks from a CD to a computer and then transfer them to the MP-BT1.

Copying tracks to a computer

Use a computer application that is capable of importing CD tracks as MP3s (e.g. iTunes) to import the tracks that you want from a CD to a computer.

For detailed information about how to do this, please refer to the manuals and/or on-line help files of the computer and application.

TIP

Most software can import CD tracks in other formats as well as MP3. Please confirm that your software is set to import tracks in MP3 format.

Turning the power on and off

To turn the MP-BT1 power on:

Slide the **POWER** switch in the direction of the arrow and hold it until “**TASCAM**” appears on the screen. Release the switch.

The MP-BT1 starts and the home screen appears.

To turn the MP-BT1 power off:

Slide the **POWER** switch in the direction of the arrow and hold it until “**Trainer series**” appears on the screen. Release the switch.

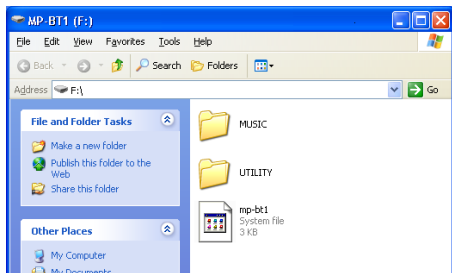
The MP-BT1 then shuts down.

2-Preparing tracks

Connecting to a computer

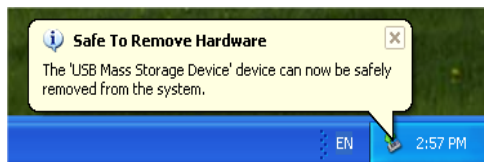
To transfer music files stored on a computer to the MP-BT1, use the included USB cable to connect the USB port on the unit to a computer USB port.

“**USB connected...**” appears on the MP-BT1 screen. On the computer, you should find the unit shown as an external drive named “MP-BT1.”



Copying tracks from a computer

1. Click on the “MP-BT1” drive icon on the computer to open it. You see two folders: **UTILITY** and **MUSIC**.
2. Drag and drop MP3 files from the computer into the **MUSIC** folder to copy them to the MP-BT1’s memory.
3. After copying finishes, follow the procedures for your computer operating system to disconnect the MP-BT1 from the computer, and then disconnect the USB cable.



The MP-BT1 automatically restarts.

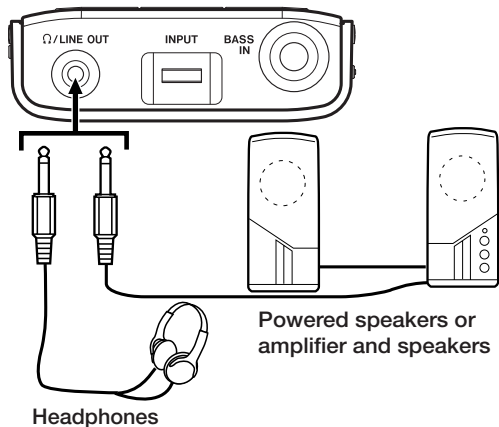
NOTE

*When shipped from the factory, an Owner's Manual is stored in the MP-BT1 drive in PDF format in the **MANUAL** folder.*

3-Playing back tracks

WARNING

Before starting playback, turn the **OUTPUT VOLUME** all the way down. Turn it up gradually to reach the desired volume. Excessive volume can damage speakers and permanently harm your hearing.



Preparing to listen

Connect headphones or a monitoring system (an amp with built-in speakers, a home stereo, etc.) using the Ω /LINE OUT jack.

Playing back tracks on the MP-BT1

Press the **▶/||** key to start playback.

Press the **▶/||** key again to stop playback.



- If you have more than one track stored on the MP-BT1, you can use the **◀◀** and **▶▶** keys to select tracks.
- If you press and hold the **◀◀** or **▶▶** key, you can search backward and forward inside the tracks (fast forward and rewind).
- Use the **OUTPUT VOLUME (+, -)** keys to adjust the volume.

3-Playing back tracks

TIP

From the MENU screen, use the BROWSE and PLAYLIST screens to select tracks directly and choose your favorite tracks.

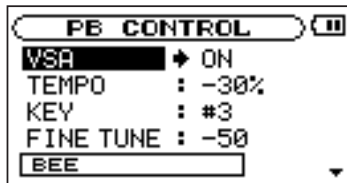
Changing the playback tempo

You can change the speed of playback, which is useful to practice difficult riffs, for example.

1. Press the MENU key to open the MENU screen.
2. Use the wheel to select PB CONTROL. Press the ENTER key to open the PB CONTROL screen.

TIP

If the home screen is open, press the ENTER key to open the PB CONTROL screen directly.



3. Use the wheel to select TEMPO and press the ENTER key.
4. Use the wheel to set the tempo.

TIP

The number shown is the percentage change from the original tempo. If VSA is set to ON on the PB CONTROL screen, the pitch stays the same even when the tempo is changed.

5. Press the MENU key twice to return to the home screen.

3-Playing back tracks

Looping a selected passage

1. Press the ►/|| key to start playback.
2. Press the I/O key at the point where you want the loop to start (IN point).
3. Press the I/O key again at the point where you want the loop to stop (OUT point).

Loop playback starts immediately from the IN point.

To stop loop playback press either the **LOOP** key or the I/O key.

If you press the **LOOP** key, the loop IN and OUT points are kept, so you can play the same loop if you press the **LOOP** key again.

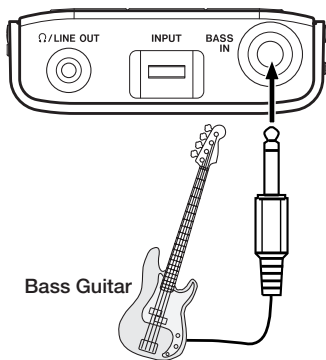
If you press the I/O key, the loop IN and OUT points are cleared.

4-Playing bass with the MP-BT1

You can connect a bass and mix your bass playing with the track you are playing back.

Connecting a bass

1. Connect a bass to the BASS IN jack.
2. Adjust the bass volume with the INPUT dial.



Practicing with tracks as they play

If you play bass while a track is playing back, you can hear the combined signals of the bass and the track output through the Ω/LINE OUT jack.

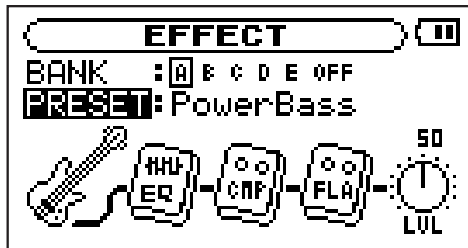
Use the **MIX BALANCE** keys to adjust the balance between the track being played back (**PLAYBACK**) and the bass (**BASS**) signals.

4-Playing bass with the MP-BT1

Using the built-in effects

The MP-BT1 has built-in bass effects.

1. Press the FX key to open the EFFECT screen.



2. Use the wheel to select BANK and press the ENTER key.
3. Use the wheel to choose a bank and press the MENU key.

You can see the name of the factory effect currently selected in the **PRESET** display directory below.

NOTE

OFF bypasses the effect.

4. Use the wheel to select PRESET and press the ENTER key.
5. Use the wheel to select preset effect and press the MENU key.
6. Use the wheel to select LVL and press the ENTER key.
7. Use the wheel to adjust LVL (the output level of the effect) and press the MENU key.

TIP

You can further adjust the parameters of the individual effects within the preset effect chain.

Notes

TASCAM
TEAC Professional Division

MP-BT1

TEAC CORPORATION

Phone: +81-422-52-5082
3-7-3, Nakacho, Musashino-shi, Tokyo 180-8550, Japan

www.tascam.com

TEAC AMERICA, INC.

Phone: +1-323-726-0303
7733 Telegraph Road, Montebello, California 90640

www.tascam.com

TEAC CANADA LTD.

Phone: +1905-890-8008 Facsimile: +1905-890-9888
5939 Wallace Street, Mississauga, Ontario L4Z 1Z8, Canada

www.tascam.com

TEAC MEXICO, S.A. De C.V

Phone: +52-555-581-5500
Camposinos No. 184, Colonia Granjes Esmeralda, Delegacion Iztapalapa CP 09810, Mexico DF

www.tascam.com

TEAC UK LIMITED

Phone: +44-8451-302511
Unit 19 & 20, The Courtyards Hatters Lane, Watford, Hertfordshire. WD18 8TE, U.K.

www.tascam.co.uk

TEAC EUROPE GmbH

Phone: +49-611-71580
Bahnstrasse 12, 65205 Wiesbaden-Erbenheim, Germany

www.tascam.de

Free Manuals Download Website

<http://myh66.com>

<http://usermanuals.us>

<http://www.somanuals.com>

<http://www.4manuals.cc>

<http://www.manual-lib.com>

<http://www.404manual.com>

<http://www.luxmanual.com>

<http://aubethermostatmanual.com>

Golf course search by state

<http://golfingnear.com>

Email search by domain

<http://emailbydomain.com>

Auto manuals search

<http://auto.somanuals.com>

TV manuals search

<http://tv.somanuals.com>