

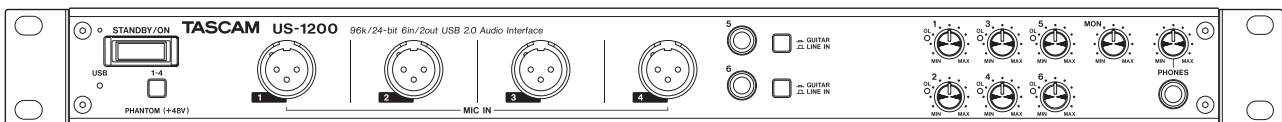
TASCAM

D01211920A

US-1200

USB2.0 Audio Interface

OWNER'S MANUAL



Before connecting this unit to a computer, the dedicated driver must be installed on the computer.

IMPORTANT SAFETY PRECAUTIONS

— For U.S.A. —

INFORMATION TO THE USER

This equipment has been tested and found to comply with the limits for a Class B digital device, pursuant to Part 15 of the FCC Rules. These limits are designed to provide reasonable protection against harmful interference in a residential installation. This equipment generates, uses, and can radiate radio frequency energy and, if not installed and used in accordance with the instruction manual, may cause harmful interference to radio communications. However, there is no guarantee that interference will not occur in a particular installation. If this equipment does cause harmful interference to radio or television reception, which can be determined by turning the equipment off and on, the user is encouraged to try to correct the interference by one or more of the following measures.

- a) Reorient or relocate the receiving antenna.
- b) Increase the separation between the equipment and receiver.
- c) Connect the equipment into an outlet on a circuit different from that to which the receiver is connected.
- d) Consult the dealer or an experienced radio/TV technician for help.

CAUTION

Changes or modifications to this equipment not expressly approved by TEAC CORPORATION for compliance could void the user's authority to operate this equipment.

DECLARATION OF CONFORMITY

We, TEAC EUROPE GmbH, Bahnstrasse 12, 65205 Wiesbaden-Erbenheim, Germany declare in own responsibility, the TEAC product described in this manual is in compliance with the corresponding technical standards.



For Canada

THIS CLASS B DIGITAL APPARATUS COMPLIES WITH CANADIAN ICES-003. CET APPAREIL NUMERIQUE DE LA CLASSE B EST CONFORME A LA NORME NMB-003 DU CANADA.

This appliance has a serial number located on the rear panel. Please record the model number and serial number and retain them for your records.

Model number _____

Serial number _____

Declaration of Conformity

Model Number : US-1200

Trade Name : TASCAM

Responsible party : TEAC AMERICA, INC.

Address : 7733 Telegraph Road, Montebello,
California, U.S.A.

Telephone number : 1-323-726-0303

This device complies with Part 15 of the FCC Rules. Operation is subject to the following two conditions: (1) this device may not cause harmful interference, and (2) this device must accept any interference received, including interference that may cause undesired operation.

IMPORTANT SAFETY INSTRUCTIONS

- 1 Read these instructions.
- 2 Keep these instructions.
- 3 Heed all warnings.
- 4 Follow all instructions.
- 5 Do not use this apparatus near water.
- 6 Clean only with dry cloth.
- 7 Do not block any ventilation openings. Install in accordance with the manufacturer's instructions.
- 8 Do not install near any heat sources such as radiators, heat registers, stoves, or other apparatus (including amplifiers) that produce heat.
- 9 Do not defeat the safety purpose of the polarized or grounding-type plug. A polarized plug has two blades with one wider than the other. A grounding type plug has two blades and a third grounding prong. The wide blade or the third prong are provided for your safety. If the provided plug does not fit into your outlet, consult an electrician for replacement of the obsolete outlet.
- 10 Protect the power cord from being walked on or pinched particularly at plugs, convenience receptacles, and the point where they exit from the apparatus.
- 11 Only use attachments/accessories specified by the manufacturer.
- 12 Use only with the cart, stand, tripod, bracket, or table specified by the manufacturer, or sold with the apparatus. When a cart is used, use caution when moving the cart/apparatus combination to avoid injury from tip-over.



- 13 Unplug this apparatus during lightning storms or when unused for long periods of time.
 - 14 Refer all servicing to qualified service personnel. Servicing is required when the apparatus has been damaged in any way, such as power-supply cord or plug is damaged, liquid has been spilled or objects have fallen into the apparatus, the apparatus has been exposed to rain or moisture, does not operate normally, or has been dropped.
- The apparatus draws nominal non-operating power from the AC outlet with its POWER or STANDBY/ON switch not in the ON position.
 - The mains plug is used as the disconnect device, the disconnect device shall remain readily operable.
 - Caution should be taken when using earphones or headphones with the product because excessive sound pressure (volume) from earphones or headphones can cause hearing loss.
 - If you are experiencing problems with this product, contact TEAC for a service referral. Do not use the product until it has been repaired.

CAUTION

- Do not expose this apparatus to drips or splashes.
- Do not place any objects filled with liquids, such as vases, on the apparatus.
- Do not install this apparatus in a confined space such as a book case or similar unit.
- The apparatus should be located close enough to the AC outlet so that you can easily grasp the power cord plug at any time.
- If the product uses batteries (including a battery pack or installed batteries), they should not be exposed to sunshine, fire or excessive heat.
- CAUTION for products that use replaceable lithium batteries: there is danger of explosion if a battery is replaced with an incorrect type of battery. Replace only with the same or equivalent type.

WARNING

- Products with Class I construction are equipped with a power supply cord that has a grounding plug. The cord of such a product must be plugged into an AC outlet that has a protective grounding connection.

■ For European Customers

Disposal of electrical and electronic equipment

- (a) All electrical and electronic equipment should be disposed of separately from the municipal waste stream via designated collection facilities appointed by the government or the local authorities.
- (b) By disposing of the electrical and electronic equipment correctly, you will help save valuable resources and prevent any potential negative effects on human health and the environment.
- (c) Improper disposal of waste equipment can have serious effects on the environment and human health as a result of the presence of hazardous substances in electrical and electronic equipment.
- (d) The crossed out wheeled dust bin symbol indicates that electrical and electronic equipment must be collected and disposed of separately from household waste.
- (e) The return and collection systems are available to the end users. For more detailed information about disposal of old electrical and electronic equipment, please contact your city office, waste disposal service or the shop where you purchased the equipment.



■ For China

产品有毒有害物质或元素的名称及含量

机种：US-1200		有毒有害物质或元素					
	品名	铅 (Pb)	汞 (Hg)	镉 (Cd)	六价铬 (Cr6+)	多溴联苯 (PBB)	多溴二苯醚 (PBDE)
1	CHASSIS部份	○	○	○	○	○	○
2	PCB Assy部份	×	○	○	○	○	○
3	线材部份	○	○	○	○	○	○
4	附属品部份	○	○	○	○	○	○
5	SEAL部份	○	○	○	○	○	○
6	包装部份	○	○	○	○	○	○

○：表示该有毒有害物质在该部件所有均质材料中的含量均在 SJ/T11363-2006 标准规定的限量要求以下。

×：表示该有毒有害物质至少在该部件的某一均质材料中的含量超出 SJ/T11363-2006 标准规定的限量要求。
(针对现在代替技术困难的电子部品及合金中的铅)

Contents

1 – Introduction	5	6 – Application Guide	26
Features	5	Windows XP and Windows Media Player	26
Included items	5	Windows 7 and Windows Media Player	26
Conventions used in this manual	5	Windows 8 and Windows Media Player	27
Trademarks	6	Mac OS X and iTunes	27
Precautions for placement and use	6	Using Audio MIDI setup	
Beware of condensation	6	in OS X Mavericks (10.9)	27
Using the TEAC Global Site	6	7 – Troubleshooting	28
User registration	6	8 – Specifications	30
Cleaning the unit	6	Audio resolution	30
2 – Names and Functions of Parts	7	Analog audio input and output ratings	30
3 – Installation	9	Analog inputs	30
System requirements	9	Analog outputs	30
Windows	9	Control input/output	30
Mac OS X	9	Audio performance	30
Connecting the power	9	Computer system requirements	31
Installing the driver	9	Windows	31
Installing the driver for Windows	9	Mac OS X	31
Installing the driver for Mac OS X	11	Supported audio drivers	31
Uninstalling the driver	12	General	31
4 – Connections	14	Dimensional drawings	32
USB connection	15	Audio flow diagram	33
Audio connections	15		
Mic	15		
Guitars	15		
Electronic instruments and other audio			
equipment	15		
Analog record players	15		
Monitor speakers	15		
Headphones	15		
5 – Mixer Panel Settings	16		
Opening the Mixer Panel	16		
Notes about the Mixer Panel	16		
INTERFACE page	16		
Status display area	17		
Setting area	17		
MIXER page	18		
EFFECTS page	21		
Note about restrictions on the use of built-in			
effects	21		
Dynamics effects	22		
Send effect	24		
Restoring settings to default values	24		
Resetting the effect settings	25		
Resetting the mixer settings	25		

1 – Introduction

Thank you for your purchase of the TASCAM US-1200 USB 2.0 Audio Interface.

Before using this unit, read this owner's manual carefully so that you will be able to use it correctly and enjoy working with it for many years. After you have finished reading this manual, please keep it in a safe place for future reference.

You can also download the Owner's Manual from the TEAC Global Site (<http://teac-global.com/>).

In case of data loss from a device (hard disk, optical disc, etc.) in a system that uses this unit, our company will take no responsibility for recovery or compensation.

Features

- High-quality parts with established records of use in professional audio equipment and our unique TASCAM High Definition Discrete Architecture (HDDA) mic preamps to provide mic preamp circuits of outstanding audio quality
- Supports resolutions up to 96kHz/24-bit
- USB 2.0 audio interface with 6 inputs (4 XLR mic and 2 TRS guitar/line) and 2 outputs in a 1U rackmount size
- Includes 4 balanced XLR mic inputs that can provide phantom power and 2 balanced TRS inputs
- Audio outputs include balanced TRS and headphone outputs
- On-board digital mixer allows input from the audio inputs and the computer to be mixed and output
- Built-in DSP effect processor, which can be operated from a computer, allows dynamics effects to be applied to the inputs and send effects to be used on a send bus (limited by sampling frequency used)
- Multitrack mode supports multitrack recording when using a DAW or other software
- Stereo mix mode supports stereo mix functions used for Internet broadcasts, for example
- Direct monitoring function allows input monitoring with low latency
- Dedicated drivers and applications available for both Windows and Mac operating systems
- SONAR LE included
- Ableton Live Lite included

■ Note about computer operation

If you are unsure about anything related to the basic operation of a computer when it is mentioned in an explanation in this manual, please refer to the computer operation manual.

A dedicated driver must be installed on a computer to use this unit with it.

For details about driver installation, see "Installing the driver" on page 9.

Included items

This product includes the following items.

Take care when opening the package not to damage the items.

Keep the packing materials for transportation in the future.

Please contact us if any of these items are missing or have been damaged during transportation.

- Main unit× 1
- AC adaptor (GPE248-120200-Z)× 1
- USB cable× 1
- A rack-mounting screw kit.....x1
- SONAR LE installation guidex1
- Ableton Live Lite installation guide.....x1
- Warranty card× 1
- Quick Start Guide× 1

CAUTION

Always use the included AC adapter (GPE248-120200-Z) with this unit. Never use the included AC adapter with any other device. Doing so could cause damage, fire or electric shock.

Conventions used in this manual

The following conventions are used in this manual.

- Buttons, connectors and other physical parts of this unit are written using a bold font like this: **PHONES LEVEL** knob.
- Information shown on the computer display is written like this "OK".
- As necessary, additional information is provided under TIP, NOTE and CAUTION headings.

TIP

These are tips about how to use the unit.

NOTE

These provide additional explanations and describe special cases.

CAUTION

Failure to follow these instructions could result in injury, damage to equipment or lost recording data, for example.

1 – Introduction

Trademarks

- TASCAM is a trademark of TEAC Corporation, registered in the U.S. and other countries.
- Microsoft, Windows, Windows XP, Windows 7, Windows 8 and Windows Media are either registered trademarks or trademarks of Microsoft Corporation in the United States and/or other countries.
- Apple, Macintosh, Mac OS, Mac OS X and iTunes are trademarks of Apple Inc.
- SONAR is a trademark of Cakewalk, Inc.
- Ableton and the Ableton logo are trademarks of Ableton AG. VST is a trademark of Steinberg Media Technologies GmbH.

III≡ Ableton Live Lite

- ASIO is a trademark and software of Steinberg Media Technologies GmbH.
- Other company names, product names and logos in this document are the trademarks or registered trademarks of their respective owners.

Any data, including, but not limited to information, described herein are intended only as illustrations of such data and/or information and not as the specifications for such data and/or information. TEAC Corporation disclaims any warranty that any use of such data and/or information shall be free from infringement of any third party's intellectual property rights or other proprietary rights, and further, assumes no liability of whatsoever nature in the event of any such infringement, or arising from or connected with or related to the use of such data and/or information.

This product is designed to help you record and reproduce sound works to which you own the copyright, or where you have obtained permission from the copyright holder or the rightful licensor. Unless you own the copyright, or have obtained the appropriate permission from the copyright holder or the rightful licensor, your unauthorized recording, reproduction or distribution thereof may result in severe criminal penalties under copyright laws and international copyright treaties. If you are uncertain about your rights, contact your legal advisor. Under no circumstances will TEAC Corporation be responsible for the consequences of any illegal copying performed using the recorder.

Precautions for placement and use

- The operating temperature range of this unit is 5–35 °C.
- Do not install this unit in the following types of locations. Doing so could make the sound quality worse or cause malfunction.
 - Locations with frequent vibrations
 - Next to a window or in another location exposed to direct sunlight
 - Near heating equipment or in other locations that become very hot
 - Very cold locations
 - Very humid or poorly ventilated locations

Very dusty locations

- Install the unit so that it is level.
- To enable good heat dissipation, do not place anything on top of the unit.
- Do not place the unit on top of a power amplifier or other device that generates heat.

Beware of condensation

Condensation could occur if the unit is moved from a cold place to a warm place, is used immediately after a cold room has been heated or is otherwise exposed to a sudden temperature change. Should this happen, leave the unit for one or two hours before turning the unit on and using it.

Using the TEAC Global Site

You can download the dedicated drivers and Owner's Manual necessary for this unit from the TEAC Global Site (<http://teac-global.com/>).

1. Open the TEAC Global Site (<http://teac-global.com/>).
2. In the TASCAM Downloads section, click the desired language to open the Downloads website page for that language.

NOTE

If the desired language does not appear, click Other Languages.

3. Click the product name in the "Search by Model Name" section to open the Downloads page for that product.
4. Select and download the dedicated drivers and Owner's Manual that are needed.

User registration

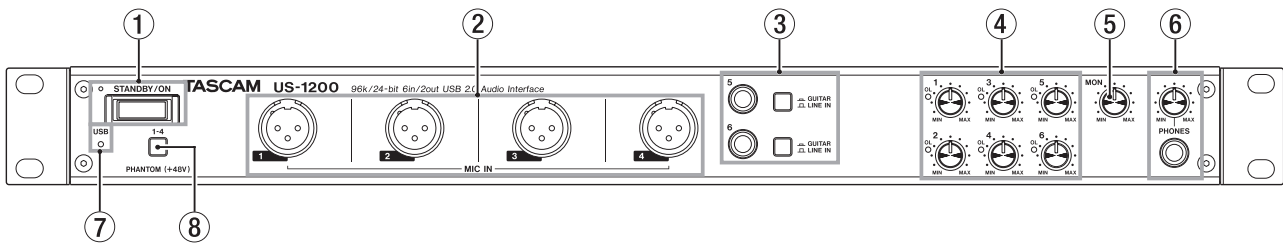
Customers in the USA, please visit the TASCAM website (<http://tascam.com/>) to register as a user online.

Cleaning the unit

To clean the unit, wipe it gently with a soft dry cloth. Do not wipe with chemical cleaning cloths, thinner, alcohol or other chemical agents. Doing so could damage the surface or cause discoloration.

2 – Names and Functions of Parts

Front panel



① STANDBY/ON switch and indicator

Press to turn the unit on and to put it into standby. The indicator lights when the unit is on.

② MIC IN (balanced) jacks 1–4

These analog mic inputs are balanced XLR jacks. (1: GND, 2: HOT, 3: COLD)

③ GUITAR/LINE IN (unbalanced/balanced) jacks and switches 5–6

These analog line inputs (5–6) are standard TRS jacks.

Set a switch to **GUITAR** (♩) to use its jack for unbalanced guitar input or to **LINE IN** (⏏) to use it for balanced signal input. (Tip: HOT, Ring: COLD, Sleeve: GND)

④ Gain knobs and OL indicators (1–6)

Use these knobs to adjust the gain of inputs (1–6) independently.

The overload (OL) indicators light just before an input is about to distort (when the signal exceeds 2 dBFS).

⑤ MON knob

Use this knob to adjust the output level of the **OUTPUT (BALANCED) L/R** jacks on the back of the unit.

⑥ PHONES jack and knob

Use this standard stereo jack (Φ6.3mm) to connect stereo headphones. Use an adapter to connect headphones with a stereo mini plug (Φ3.5mm).

The same signal is output from both the **PHONES** and the **OUTPUT (BALANCED) L/R** jacks.

Use the **PHONES** knob to adjust the headphone output level.

⑦ USB indicator

This lights when the USB connection is working.

⑧ PHANTOM (+48V) switch

Use this switch to provide +48V phantom power to the **MIC IN (1–4)** jacks.

Press this switch to turn it on. This switch turns phantom power on/off for all 4 input channels at the same time.

CAUTION

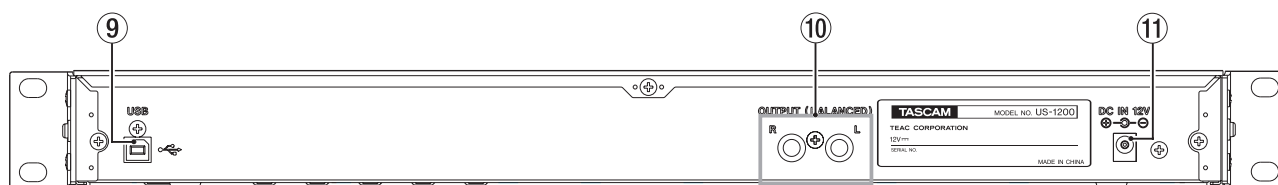
- *This switch affects all four input channels simultaneously. Do not turn phantom power on when connecting a mic that does not require phantom power.*
- *Turning this switch on when a dynamic mic or other equipment that does not require phantom power is connected could damage the equipment.*
- *Do not connect or disconnect mics when this switch is on (pushed in). Doing so could cause a loud noise and might damage the equipment.*
- *Before using this switch to turn phantom power on or off, set the **MON** and **PHONES** knobs and the master fader on the **MIXER** screen to their minimum values. Depending on the connected mics, sudden loud noises from monitoring equipment could occur, and this could damage the equipment or harm hearing.*
- *Supplying phantom power to some ribbon mics could break them. If you are unsure, do not supply phantom power to a ribbon mic.*

CAUTION

*Before connecting headphones, minimize the volume with the **PHONES** knob. Failure to do so might cause sudden loud noises, which could harm your hearing or result in other trouble.*

2 – Names and Functions of Parts

Rear panel



9 USB port

Use the included USB cable to connect the unit to a computer. (Only USB 2.0 is supported.)

CAUTION

- *USB 1.1 is not supported.*
- *When connected to a USB 3.0 port, it will function in High Speed mode equivalent to USB 2.0 (480 Mbps maximum).*
- *This unit does not support computer suspend (sleep) mode, so the unit might not function properly after this mode ends. If this occurs, put the unit into standby mode and turn it on again or disconnect and reconnect the USB cable.*

10 OUTPUT (BALANCED) L/R jacks

These are standard balanced TRS jacks for analog monitoring output.

These output the signals set by the LINE OUTPUTS item on the INTERFACE page of the Mixer Panel.

Use the **MON** knob on the front of the unit to adjust the output level.

Connect monitor speakers, for example, to these jacks. (Tip:HOT, Ring: COLD, Sleeve: GND)

11 DC IN 12V connector

Connect the included AC adapter (GPE248-120200-Z) here.

3 – Installation

System requirements

For the latest information about supported operating systems, visit the TEAC Global Site (<http://teac-global.com/>).

Windows

■ Supported operating systems

- Windows 8 (including 8.1) 32-bit
- Windows 8 (including 8.1) 64-bit
- Windows 7 32-bit SP1 or later
- Windows 7 64-bit SP1 or later
- Windows XP 32-bit SP3 or later
(Windows Vista and Windows XP 64-bit are not supported.)

■ Computer hardware requirements

Windows computer with a USB 2.0 port

■ CPU/processor speed

2 GHz or faster dual core processor (x86)

■ Memory

2 GB or more

CAUTION

Operation of this unit was confirmed using standard computers that meet the above requirements. This does not guarantee operation with all computers that meet the above requirements. Even computers that meet the same system requirements might have processing capabilities that differ according to their settings and other operating conditions.

Mac OS X

■ Supported operating systems

- OS X Mavericks (10.9.1 or later)
- OS X Mountain Lion (10.8.4 or later)
- OS X Lion (10.7.5 or later)
- OS X Snow Leopard (10.6.8 or later)

■ Computer hardware requirements

Apple Macintosh computer with a USB 2.0 port

■ CPU/processor speed

2 GHz or faster dual core processor

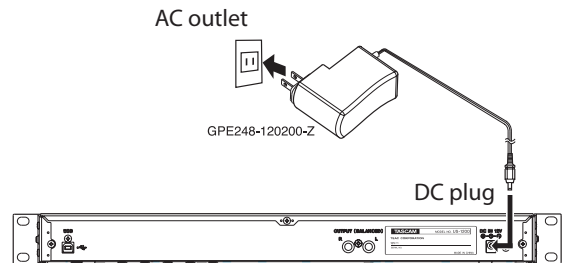
■ Memory

2 GB or more

Connecting the power

Confirm in advance that the unit's **STANDBY/ON** switch is set to **STANDBY**.

Connect the included AC adapter (GPE248-120200-Z) to the unit and a power outlet as shown below.



CAUTION

Always use the AC adapter (GPE248-120200-Z) that was shipped with the unit. Using a different AC adapter could cause malfunction, overheating, fire or other problems.

Installing the driver

A driver must be installed on a computer to use this unit with it.

Drivers might be updated at any time. Download the latest driver for the operating system you are using from the TEAC Global Site (<http://teac-global.com/>).

CAUTION

- *Since digital audio signal processing puts a fairly heavy load on the computer, the operation of other applications, particularly graphic-intensive applications and Internet tools, could cause processing to fall behind. Do not run other applications when using audio applications.*
- *Restarting the computer might be necessary after installation or uninstallation completes. Save your data and conduct other necessary steps in other applications before quitting them.*

Installing the driver for Windows

NOTE

- *Install the driver on the computer before connecting the unit to it with the USB cable. If you already connected the USB cable, and the Found New Hardware Wizard launched, cancel and quit the wizard and disconnect the USB cable.*
- *When installing the driver, a warning might appear with a message such as, "The software you are installing for the hardware has not passed Windows Logo testing to verify its compatibility with Windows." If this message appears, click "Continue Anyway" to proceed with the installation.*

3 – Installation

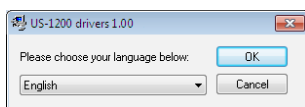
■ Driver installation procedures

1. Download the latest driver for the operating system you are using from the TEAC Global Site (<http://teac-global.com/>) and save it on the computer to be used with the unit.
2. Open the saved driver (zip file) on, for example, the computer desktop.
3. Double-click the “setup.cmd” file in the folder that was created when you opened the zip file.

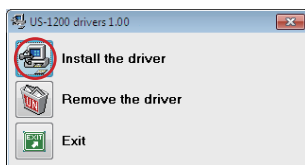
CAUTION

If you open a zip file without decompressing it and double-click the “setup.cmd” file in the folder that opens, installation will not start. Right-click the zip file and, for example, select “Extract All...” to decompress it and then try again.

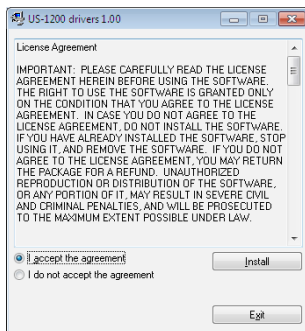
4. When the language selection screen (below) appears, select the language you prefer and then click the OK button. (The screens and button names used in the following instructions are for when English is selected.)



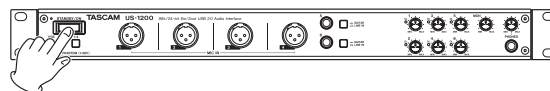
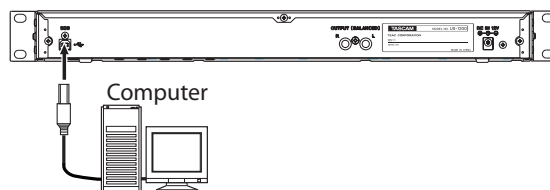
5. Click the “Install the driver” button when the screen below appears.



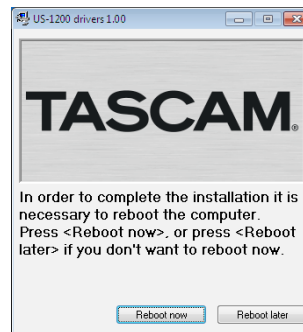
6. Read the user license agreement and select “I accept the agreement”.
Next, click the “Install” button to start installation.



7. When the following screen appears, connect the unit and the computer with the included USB cable. Then, press the unit’s **STANDBY/ON** switch to turn it on.



8. The following screen appears when installation has completed.
Click the “Reboot now” button.
The installer will quit and the computer will restart.



Installing the driver for Mac OS X

NOTE

- *Install the driver on the computer before connecting the unit to it with the USB cable. If the USB cable is connected, cancel driver installation and disconnect it before starting driver installation again.*
- *During driver installation a warning message such as "TASCAM US-1200 X.XX" can't be opened because it was not downloaded from the Mac App Store." might appear. If a message like this appears, follow the instructions in "Working with Gatekeeper" on page 11 and then proceed with the installation.*

■ Driver installation procedures

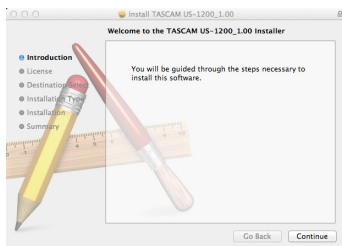
1. Download the latest driver for the operating system you are using from the TEAC Global Site (<http://teac-global.com/>) and save it on the computer to be used with the unit.
2. Double-click TASCAM_US-1200_driver_X.XX.dmg, which is the downloaded and saved disk image file, and double-click "TASCAM US-1200 X.XX" inside the folder that opens.



NOTE

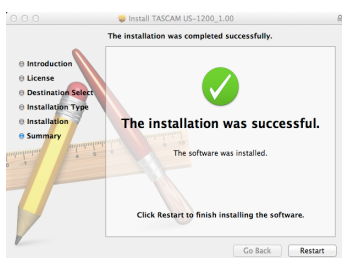
Depending on the computer's settings, the downloaded dmg file might not have opened automatically. In this case, open the dmg file first and then double-click the disk image file.

3. After the installer launches, follow the instructions on the screen to proceed with the installation.



4. The following screen appears when installation has completed.

Click the Restart button. The installer will quit and the computer will restart.



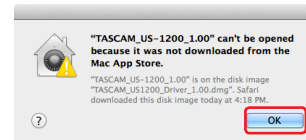
■ Working with Gatekeeper

Depending on the Gatekeeper setting, a warning message might appear during installation.

The solution depends on the warning message shown.

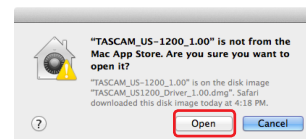
See the following explanations for details.

- When the Gatekeeper setting is "Allow applications downloaded from: the Mac App Store" "TASCAM US-1200 X.XX" can't be opened because it was not downloaded from the Mac App Store." might appear as a security warning message.



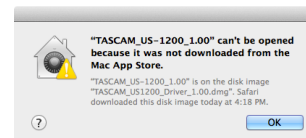
In this case, click the OK button to close the message. Then, control-click (or right-click) the file and click "Open".

When the "TASCAM US-1200 X.XX" can't be opened because it was not downloaded from the Mac App Store. Are you sure you want to open it?" security warning message appears, click the "Open" button.



This warning message might also appear when the Gatekeeper setting is something other than "Allow applications downloaded from: the Mac App Store"

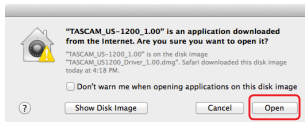
The file still might not open and "TASCAM US-1200 X.XX" can't be opened because it was not downloaded from the Mac App Store." might appear again.



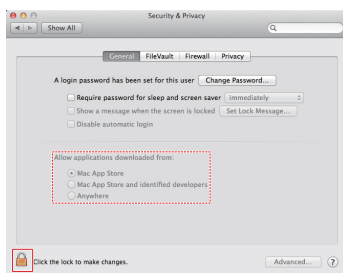
In this case, copy the file from the folder where it is to the desktop or another folder, and then open it. Alternatively, change the Gatekeeper settings to "Allow applications downloaded from: the Mac App Store and identified developers" and try opening it again.

3 – Installation

- When the Gatekeeper setting is not "Allow applications downloaded from: the Mac App Store"
"TASCAM US-1200 X.XX' is an application downloaded from the Internet. Are you sure you want to open it?" might appear as a security warning message. In this case, click the "Open" button.



- Changing the Gatekeeper setting
The Gatekeeper setting can be changed using the "Allow applications downloaded from:" item on the "General" page of the "Security & Privacy" pane of the System Preferences. To change this, you must click the lock icon at the bottom left and enter a password to unlock the settings.



This setting will lock again when you click the "Show All" button at the top left of the window to close the open pane or when you quit the System Preferences by, for example, clicking the round button at the top left corner of the window or typing command-Q.

CAUTION

Changing the Gatekeeper settings could result in security risks.

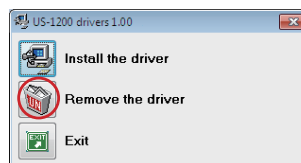
If you changed the Gatekeeper setting to decrease security (use one of the lower settings), set it back to the original setting after updating the driver and/or firmware.

Uninstalling the driver

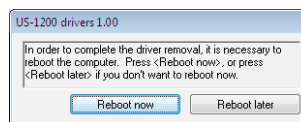
Windows

There are two ways to uninstall the driver.

- Uninstalling from the "setup.cmd" file used during installation
- Follow the procedures in steps 2 to 4 of "Installing the driver for Windows" on page 9.
 - In step 5, click the "Remove the driver" button.



- The following screen appears when uninstallation has completed. Click the "Reboot now" button. The uninstaller will quit and the computer will restart.



- Uninstalling from the Windows "Programs and Features" Control Panel

- From the Windows Start menu, select and open the Control Panel.

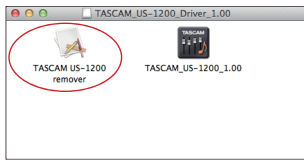
NOTE

In Windows 8, to open the Control Panel, right-click the Start screen and click the "All apps" button (or ↓ button in Windows 8.1) that appears at the bottom right of the screen, and then click the Control Panel item.

- When "View by:" is set to "Category" ("Category View" in Windows XP), click "Uninstall a program" under the "Programs" item. When "View by:" is set to "Large icons" or "Small icons" ("Classic View" in Windows XP), click "Programs and Features".
- Double-click "US-1200 drivers" in the list.
- Then, follow the instructions that appear on the screen.

■ Mac OS X

1. Double-click the “TASCAM_US-1200_driver_X.XX.dmg” disk image file that was used during installation, and double-click “TASCAM US-1200 remover” inside the folder.



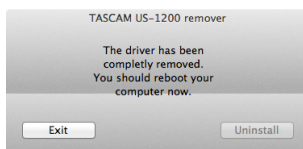
2. Click the “Uninstall” button.



Then, follow the instructions that appear on the screen.

3. The following screen appears when uninstallation has completed.

Click the “Exit” button to close the uninstaller.



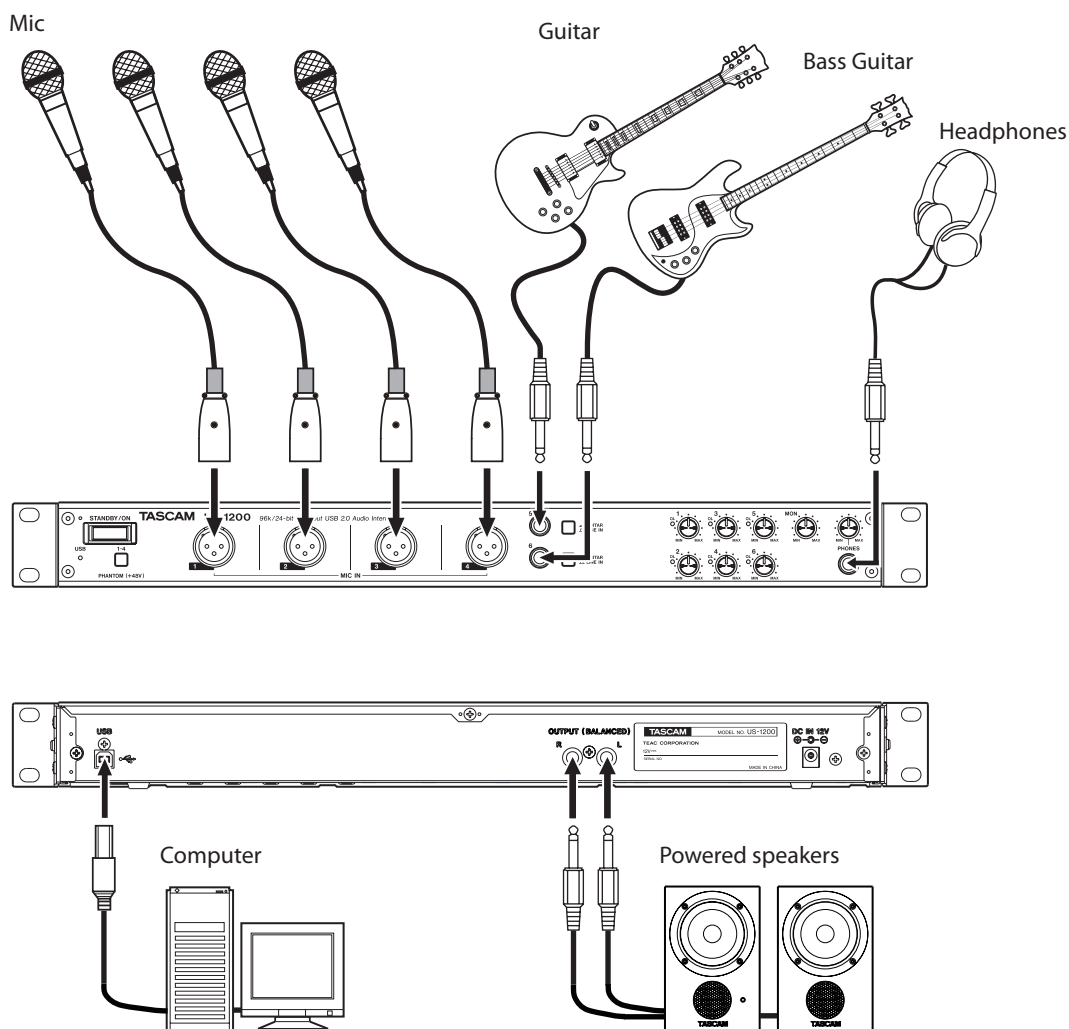
4. Restart the computer.

4 – Connections

This is an example of US-1200 connections.

■ Precautions before making connections

- Carefully read the operation manuals of the devices to be connected and then connect them correctly.
- Before making connections, turn this unit and all equipment to be connected off (standby).
- Install all connected devices, including this unit, so that they are powered from the same line. When using a power strip or similar device, be sure to use one that has high current capacity (thick cable) in order to minimize fluctuations in power voltage.



Examples of connections to a US-1200

USB connection

Use the included USB cable to connect the unit to a computer as shown in the illustration. When the USB connection is working, the **USB** indicator on the front of the unit lights.

CAUTION

Some USB devices access the USB bus frequently. In order to avoid audio signal dropouts, clicking and other noises, we strongly recommend that you do not connect other USB devices to the same USB bus that this unit is using. Connecting USB keyboards and mice, however, to the same bus should not be a problem.

Audio connections

Analog audio signals input into this device from mics, guitars, keyboards and other audio equipment can be converted into digital signals and transmitted to the computer via USB. In addition, by connecting speakers (through an amplifier if not powered) or headphones to this unit, you can monitor audio signals that are input to this unit and output from the computer.

CAUTION

*Before connecting audio equipment, set the unit's 1–6 gain, **MON** and **PHONES** knobs to their lowest (**MIN**) values. Failure to do so could cause sudden loud noises from monitoring equipment, and this could damage the equipment or harm hearing.*

Mic

Connect mics to the **MIC IN 1–4** jacks on the front of the unit. When using condenser mics that require phantom power, after connecting them to the **MIC IN 1–4** jacks, push the **PHANTOM (+48V)** switch in to turn it on.

CAUTION

- *The **PHANTOM (+48V)** switch affects all four input channels simultaneously. Do not turn phantom power on when connecting a mic that does not require it.*
- *Turning phantom power on when a dynamic mic or other mic that does not require it is connected could damage the equipment.*
- *Do not connect or disconnect mics while phantom power is on. Doing so could cause a loud noise and might damage the equipment.*
- *Before turning phantom power on or off, set the **MON** and **PHONES** knobs and the master fader on the **MIXER** screen to their minimum values. Depending on the connected mics, sudden loud noises from monitoring equipment could occur, and this could damage the equipment or harm hearing.*
- *Supplying phantom power to some ribbon mics could break them. If you are unsure, do not supply phantom power to a ribbon mic.*

Guitars

When connecting a guitar or bass guitar directly to this unit, use a **GUITAR/LINE IN (5–6)** jack on the front of the unit and set the **GUITAR/LINE IN** switch for that jack to **GUITAR** (⏏).

Electronic instruments and other audio equipment

When connecting an electronic instrument or other audio equipment directly to this unit, use the **GUITAR/LINE IN (5–6)** jacks on the front of the unit and set the **GUITAR/LINE IN** switches to **LINE IN** (⏏).

Analog record players

The output of an analog record player cannot be connected directly to this unit. To connect an analog record player to this unit, a phono amp and equalizer must be connected between them (or the output jacks of an audio amplifier that has phono input jacks must be used).

Monitor speakers

Connect monitor speakers (powered speakers or an amplifier and speaker system) to the **OUTPUT (BALANCED) L/R** jacks on the back of the unit.

Headphones

Connect headphones to the **PHONES** jack (standard stereo) on the front of the unit.

5 – Mixer Panel Settings

You can use the Mixer Panel to change and save settings for the various functions of the unit.

Opening the Mixer Panel

Follow the instructions for your operating system below to open the Mixer Panel.

Windows

- Click "TASCAM US-1200 Mixer Panel" in the notification area to open the mixer panel.

- Select the Mixer Panel from the program/applications Windows XP/Windows 7

Click the Start button, select "All Programs," "TASCAM," and then "TASCAM US-1200 Mixer Panel" to open the Mixer Panel.

Windows 8

In Windows 8, right-click the Start screen and click the "All apps" button (or ↓ button in Windows 8.1) that appears at the bottom right of the screen to open the Apps screen. On this screen, click the "TASCAM US-1200 Mixer Panel" item under "TASCAM" to open the Mixer Panel.

- In Windows 8, click "TASCAM US-1200 Mixer Panel" on the Start screen to open the Mixer Panel.

NOTE

In Windows 8.1, the application is not automatically added to the Start screen.

- Open the Mixer Panel from the Control Panel.

Windows XP

- Click the Start button and select "Control Panel" to open the Control Panel.
- If the Control Panel is in Category view, click "Switch to Classic View".
- Select "TASCAM US-1200" to open the Mixer Panel.

Windows 7

- Click the Start button and select "Control Panel" to open the Control Panel.
- If the Control Panel is showing categories, set the "View by:" item to "Large icons" or "Small icons".
- Select "TASCAM US-1200" to open the Mixer Panel.

Windows 8

- In Windows 8, right-click the Start screen and click the "All apps" button (or ↓ button in Windows 8.1) that appears at the bottom right of the screen, and click Control Panel to open it.
- If the Control Panel is showing categories, set the "View by:" item to "Large icons" or "Small icons".
- Select "TASCAM US-1200" to open the Mixer Panel.

NOTE

In Windows 8, you can also open the Control Panel by clicking the Control Panel item in the menu that appears if you right-click the bottom left corner of the desktop.

Mac OS X

- Using the Finder, open the Applications folder and click "TASCAM US-1200 Mixer Panel" to open the mixer panel.
- In the Audio Devices window of the Audio MIDI Setup application, right-click (control-click) "US-1200" (or select "US-1200" and click the settings icon) and click "Configure device..." to open the Mixer Panel.

Notes about the Mixer Panel

The Mixer Panel has three tabbed pages.

Click a tab at the top of the Mixer Panel to open that page.

INTERFACE: This page shows the current status of the driver and information about connections. It also allows you to change various settings.

MIXER: Make built-in mixer settings on this page.

EFFECTS: Make built-in effects settings on this page.

INTERFACE page



Windows INTERFACE page



Mac INTERFACE page

The INTERFACE page is divided into two areas. One shows the status of the unit and the other shows settings.

Status display area

This shows the driver version and the current status of the unit.

Item displayed	Meaning
Driver Version	Driver software version in use
Device	Unit model
Connection Type	Type of connection with computer
Firmware Version	Firmware version used by unit
Sample Width	Current bit depth
Sample Rate	Current sampling frequency

Setting area

Make various driver settings here.

① Audio Performance (Windows only)

The driver for the unit stores the audio input and output signals transferred to and from the computer temporarily in a buffer.

You can adjust the buffer size, according to the use conditions.

Options

- Highest latency: maximum buffer size
- High latency: large buffer size
- Normal latency: medium buffer size (default)
- Low latency: small buffer size
- Lowest latency: minimum buffer size

NOTE

- *Smaller buffer sizes result in less audio signal delay (latency), but require high-speed processing by the computer. If the processing cannot keep up, for example, due to other system operations, clicking and popping noises might occur and the audio signal might even drop out.*
- *Increasing the buffer size will stabilize operation and suppress negative effects on audio signals from system operations, but the delay in audio signals sent to the computer will increase.*
- *On Mac OS X, set the buffer size in each audio application that uses a buffer. For details, see the operation manual of the audio application that you are using.*

② LINE OUTPUTS (output selector)

This unit outputs two signal channels.

Select the signals to be output from the **OUTPUT (BALANCED) L/R** and **PHONES** jacks.

Options

mixer output L-R (default value)

The signals input from all the input connectors and the signals sent from the computer by USB will be mixed by the mixer and output.

computer 1 and -2

Only the signals sent from the computer by USB are output.

③ Mixer Mode

You can change the mixer mode to stereo or multitrack according to the application.

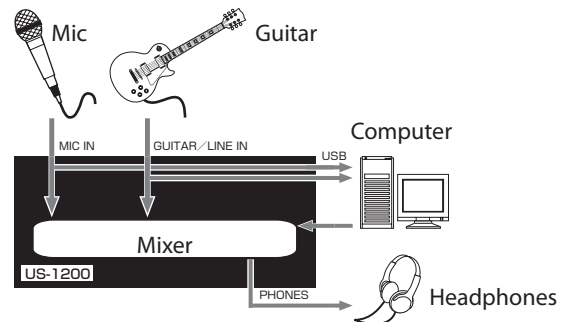
Options

Multitrack (default)

Use this setting for multitrack recording when using a DAW (e.g. SONAR).

The signal from each input will be sent separately by USB to the computer for multitrack recording. You can mix the input signals and the computer playback signals with the mixer and even apply effects to create the monitoring sound you want.

Signals are output from the mixer in stereo and can be heard on headphones as well as speakers or other equipment connected to the output jacks.



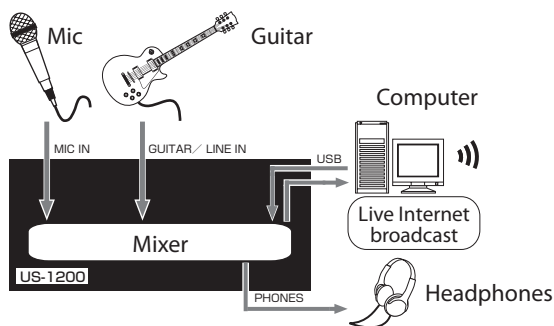
5 – Mixer Panel Settings

Stereo Mix

Use this setting if you want to broadcast or record a stereo mix, for example when transmitting a live broadcast over the Internet or recording audio for video. You can also use it when you want to record a mixed stereo track using the functions of the DSP mixer.

The signals input from all the input connectors and the signals sent from the computer by USB will be mixed and sent to all the output connectors and the computer.

Signals are output from the mixer in stereo and can be heard on headphones as well as speakers or other equipment connected to the output jacks.

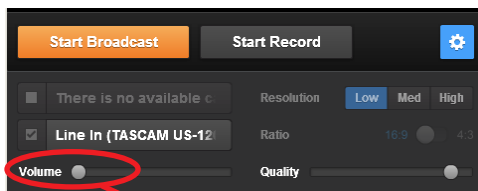


For details about the audio flow in Multitrack and Stereo Mix modes, see “Audio flow diagram” on page 33.

NOTE

Be aware of the following when using the unit in Stereo Mixed mode.

When broadcasting live over the Internet, for example, the sound could loop, creating an echo-like effect. To avoid this, set the volume in the application that you are using to zero (0).



Volume (0)

MIXER page



Make built-in mixer settings on the MIXER page.

The contents of this screen depend on the Mixer Mode setting on the INTERFACE page.

NOTE

All settings (except for SOLO buttons) made on the MIXER page are retained even when the unit is turned off (and restarted). The SOLO buttons are reset to their default values (off) whenever the unit is turned off (and restarted).

- Selection buttons for dynamics effects**
 Click a dynamics effect name to select and use it. Only one dynamics effect can be used at a time.

- Options
- Off (default): Effect names unlit
 - COMPRESSOR: Effect name lit
 - NOISE SUPPRESSOR: Effect name lit
 - DE-ESSER: Effect name lit
 - EXCITER: Effect name lit
 - EQ: Effect name lit

To change the dynamics effect being used, click the button of the desired effect. The previously used effect will automatically be turned off, and the newly selected effect will be turned on.

NOTE

- Selection will not be possible when an effect cannot be used due to sampling frequency limitations.
- Turning the dynamics effect on/off using these buttons is linked to the dynamics effect on/off setting on the EFFECT page.

- Dynamics effects assignment buttons**
 Click a channel button or the MASTER L/R button to apply the dynamics effect to that channel or channel pair.

You cannot assign the dynamics effect to more than one channel at a time.

- Options
- Off (default): Channel name button unlit
 - On: Assigned channel name button lit

To change the channel to which the dynamics effect is assigned, click the channel name button of the desired channel. The previously assigned channel name button will become unlit, and the newly assigned channel name button will light.

③ Effects send selection buttons

Set whether the signal sent to the send bus is pre-fader or post-fader.

Click a button to cycle through the POST, off and PRE settings in order.

Options

PRE: The signal is sent to the send bus before adjustment by the channel fader. The send level will not be affected by the channel fader.

POST (default): The signal is sent to the send bus after adjustment by the channel fader. The send level will be affected by the channel fader.

Off: No signal is sent to the send bus. When off, the entire frame appears unlit.

④ Send knobs

Use to adjust the level of the signal sent to the send bus (send level).

Range: 0–127 (default: 127)

Use the mouse to click and drag a send knob up or down to adjust the level.

While dragging the mouse, the value being adjusted is shown beneath the send knob.

⑤ SOLO buttons

Click a SOLO button to solo that channel. SOLO buttons light on channels that are soloed. When a channel is soloed, channels that have not been soloed will automatically be muted and their MUTE buttons will light. (Default: off)

Multiple channels can be soloed at the same time.

NOTE

- *When all the SOLO buttons are off, clicking the SOLO button of one channel will put the unit into solo mode and automatically mute the other channels, lighting their MUTE buttons.*
- *When all the SOLO buttons are off, solo mode will end. When solo mode ends, channels that had been automatically muted will become unmuted. Channels that had been individually muted before the unit entered solo mode will remain muted.*
- *The MASTER L/R channel MUTE button will not turn on automatically when the unit enters solo mode.*
- *Solo settings are not saved. If the unit is turned off, all the solo and mute settings will be cleared when the unit is restarted.*

⑥ MUTE buttons

Click a MUTE button to mute that channel. These buttons light for channels that are muted. (Default: off)

NOTE

In addition to turning the MUTE button on and off, channels will be automatically muted and unmuted when SOLO buttons are used

⑦ Pan sliders

Use these to adjust the stereo position of the signal input to each channel.

Use the mouse to click and drag a pan slider left or right to adjust the stereo position.

While dragging the mouse, the value being adjusted is shown in its fader level display area (0).

The value is L15 when set all the way to the left and R15 when set all the way to the right.

The value is C when in the center.

Range: L15–L1, C, R1–R15 (default:C)

The pan slider appears blue when centered (C) and yellow at all other positions.

NOTE

- *When the pan slider is centered, the signal is reduced by 3 dB. Odd-numbered channels are sent to the left bus and even-numbered channels are sent to the right bus.*
- *When a LINK button is on, a pan slider adjusts the volume balance between the left (odd) and right (even) channels.*
- *You can return the pan slider to the center (C) position by clicking it while pressing the following key on the computer keyboard.*

Windows PC: ctrl key

Mac: command key

⑧ Channel faders

Use these to adjust the mix levels of each channel.

Use the mouse to click and drag a channel fader up or down to adjust its level.

The value being adjusted is shown in the fader level display area (0).

NOTE

You can return a channel fader to its 0 dB position by clicking it while pressing the following key on the computer keyboard.

Windows PC: ctrl key

Mac: command key

⑨ Channel level meters

These meters show the input signal levels.

Each level meter has an overload indicator at its top.

In Multitrack mode, these show the levels before effects. In Stereo Mix mode, these show the levels after effects.

NOTE

The channel meters show the levels before being adjusted by the faders. Level meters are not affected by fader adjustments or even their channels being muted.

⑩ Fader level (pan position) display areas

These show the levels of the channel faders above them as decibel values.

When using a pan slider to adjust the stereo position, the current position is shown here.

5 – Mixer Panel Settings

11 LINK buttons

When you click a LINK button, the mixer functions of the channels assigned to it are linked as a stereo pair. When a pair is linked, their LINK button lights. (Default: off)

When a pair is stereo linked, the buttons and faders of the channels are combined. The channel level meters are also shown as a stereo pair.

NOTE

- *When a pair is stereo linked, the settings of the buttons and faders of the odd-numbered channels are used. The pan slider, however, is set to the center (C).*
- *When a stereo link is turned off, both channels retain the settings used while linked. The dynamics effect, however, is assigned to the odd-numbered channel, and the pan slider is set to the center (C).*
- *When the stereo link is on, if the pan slider is centered (C), the signal is reduced by 3 dB. Odd-numbered channels are sent to the left bus and even-numbered channels are sent to the right bus. For this reason, the level will be 3 dB lower than if the pan slider of the odd-number channel was set to L15 and the even-numbered channel was set to R15 when not stereo-linked.*

12 Channel names

These show the channel names of this unit's inputs and the signals output from the computer.

13 Status display area

This shows some of the current settings.

Sample Rate:	Current sampling frequency
Sample Width:	Quantization bit depth
Mixer Mode:	Current mixer mode setting
Mixer Mode:	Shows the mixer mode

14 MON MIX slider

If the Mixer Mode setting on the INTERFACE page is set to Multitrack, you can use the slider to adjust the balance of the signal output from the built-in mixer.

Slide it all the way to the Input side to output only the signals input to this unit, or slide it all the way to the Computer side to output only the signals output from the computer to the unit by USB.

Click the slider and drag it left and right to adjust it.

If the Mixer Mode setting on the INTERFACE page is set to Stereo Mix, the MON MIX slider will not appear. The signals input through each input jack and from the computer output will be mixed and output from the unit.

NOTE

If the Mixer Mode setting is set to Multitrack, you can return the MON MIX slider to the center position by clicking it while pressing the following key on the computer keyboard.

Windows PC:	ctrl key
Mac:	command key

15 REVERB button

Click the REVERB button to apply the effect. (Default: off)

When reverb is on the REVERB button lights.

NOTE

- *Turning it on will not be possible when an effect cannot be used due to sampling frequency limitations.*
- *Turning the send effect on/off using this button is linked to the send effect on/off setting on the EFFECTS page.*

16 RETURN knob

Use to adjust the return level, which is the signal from the send effect returned to the stereo bus.

Range: 0–127 (default: 64)

Use the mouse to click and drag the RETURN knob up or down to adjust the level.

While dragging the mouse, the value being adjusted is shown beneath the RETURN knob.

17 Send knob

Use this to adjust the send level, which is the signal sent from the send bus to the send effect.

Range: 0–127 (default: 127)

Use the mouse to click and drag the SEND knob up or down to adjust the level.

While dragging the mouse, the value being adjusted is shown beneath the SEND knob.

18 Master level meter

The master levels are shown by this stereo level meter.

Each level meter has an overload indicator at its top.

NOTE

The master level meters show the levels after being adjusted by the fader (post fader). The level meters are affected by fader adjustments and channels being muted.

19 Master fader level display area

This shows the level of the master fader as a numerical decibel value.

20 Master fader

Use this to adjust the level of the output signal.

Use the mouse to click and drag the master fader up or down to adjust the master level.

The value being being adjusted is shown in the master fader level display area (o).

NOTE

You can return a master fader to its 0 dB position by clicking it while pressing the following key on the computer keyboard.

Windows PC:	ctrl key
Mac:	command key

EFFECTS page



EFFECTS page (Windows)

Make built-in effects settings on this page.

NOTE

The EFFECTS page settings are retained even when the unit is turned off.

① Dynamics effects tabs

Click the tab of the dynamics effect that you want to use to show its settings tab.

Options

COMPRESSOR, NOISE SUPPRESSOR, DE-ESSER, EXCITER, EQ

For details about each dynamics effect, see “Dynamics effects” on page 22.

② Parameter knobs

Use the mouse to click and drag a parameter knob up or down to adjust it.

The values of adjusted parameters are shown above their knobs.

For details about each effect parameter, see “Dynamics effects” on page 22 and “Send effect” on page 24.

③ Dynamics effect on/off button and indicator

Click the name or indicator of the dynamics effect that is currently being shown to turn it on or off.

When a dynamics effect is on its name lights.

NOTE

- *Only one dynamics effect can be used at a time. For this reason, if you turn on a different dynamics effect, the dynamics effect that you are currently using will automatically be turned off.*
- *Turning the dynamics effect on/off on this page is linked to the dynamics effect on/off setting on the MIXER page.*
- *Turning it on will not be possible when an effect cannot be used due to sampling frequency limitations.*

④ Reverb type switch

This unit's REVERB effect has five types.

Click the name of a reverb type to use it. The selected reverb type name will light.

For details about each parameter, see “Send effect” on page 24.

⑤ Send effect on/off button and indicator

Click the name or indicator of the send effect (reverb) that is currently being shown to turn it on or off.

When the send effect is on, its name lights.

NOTE

- *Turning the send effect on/off on this page is linked to the send effect on/off setting on the MIXER page.*
- *Turning it on will not be possible when an effect cannot be used due to sampling frequency limitations.*

Note about restrictions on the use of built-in effects

The number of built-in effects that can be used is restricted depending on the sampling frequency.

- When the sampling frequency is 44.1 kHz or 48 kHz, one type of effect (either dynamics or send) can be used. (Turning an effect on will automatically turn off in any other effect that is on.)
- When the sampling frequency is 88.2 kHz or 96 kHz, no effects can be used.

5 – Mixer Panel Settings

Dynamics effects

■ Compressor

When the input volume exceeds the THRESHOLD level, the input volume is compressed, reducing output volume variation.

For example, by reducing the levels of loud sounds, lower level sounds become relatively louder, creating a more even volume level throughout and a more sustained sound.

On the COMPRESSOR page, three meters show the level of the signal input to the compressor (INPUT), the level of the signal output from the compressor (OUTPUT) and the gain reduction caused by the compressor (GR).



THRESHOLD knob

Sets the threshold level that will cause the effect to start.

Range: -32 dB-0 dB (default: -12 dB)

RATIO knob

Sets the compression ratio for the input volume.

Turning it right raises the compression ratio, increasing the amount of compression.

Range: 1.0:1-inf:1 (default: 2.0:1)

ATTACK knob

Sets the amount of time until the compression reaches the compression RATIO setting after the input volume exceeds the threshold level.

Range: 2 ms-200 ms (default: 20 ms)

RELEASE knob

Sets the amount of time until the compression stops and the sound returns to its uncompressed level after the input sound goes below the threshold level.

Range: 10 ms-1000 ms (default: 420 ms)

GAIN knob

Sets the gain of the output signal.

When the volume is compressed, the output level becomes lower than the input level. Use the GAIN knob to increase the output level so that it is close to the input level.

Range: 0 dB-32 dB (default: 4 dB)

NOTE

- *If the input is a stereo signal (stereo-linked channel or master), compression will start and be applied to both channels when either the left or right input channel exceeds the threshold level.*
- *When the compressor is off, the compressor curve will appear but the meters will not be active.*

■ Noise Suppressor

When the input volume becomes less than the threshold level, the output level is reduced automatically to suppress noise.

When the threshold level is exceeded, the sound is output at its ordinary level again.

This is useful for reducing noise during performances and pauses in sound input.



THRESHOLD knob

Sets the threshold level that will cause the effect to start/stop.

Range: -84 dB to -24 dB (default: -64 dB)

SUPPRESSION knob

Sets the amount the output level will be reduced when the input sound becomes less than the threshold level.

The higher the value, the more the output level and noise will be reduced.

Range: 12 dB to 72 dB (default: 42 dB)

ATTACK knob

Sets the amount of time until the set suppression amount is reached after the input sound goes below the threshold level.

Range: 0 ms-4000 ms (default: 5 ms)

RELEASE knob

Sets the amount of time until suppression stops after the input sound exceeds the threshold level.

Range: 0 ms-4000 ms (default: 320 ms)

NOTE

If the input is a stereo signal (stereo-linked channel or master), noise suppression will start when both the left and right input channels go below the threshold level.

5 – Mixer Panel Settings

■ DE-ESSER

This is a compressor specialized for high frequencies. Use it to reduce vocal “s” sounds and other harsh high-frequency noises.



FREQUENCY knob

Sets the lowest frequency that causes the de-esser to function.

Range: 1 kHz–4 kHz (default: 1.15 kHz)

DEPTH knob

Sets the amount of compression.

The higher the value the greater the compression (and de-essing effect).

Range: 1–100 (default: 25)

■ EXCITER

This effect emphasizes high-frequency harmonics to add clarity and sparkle while maintaining the original sound.



FREQUENCY knob

Sets the frequency above which harmonics are emphasized.

Range: 1 kHz–4 kHz (default: 2.00 kHz)

DEPTH knob

Sets the amount that harmonics are emphasized.

The higher the value, the more they are emphasized.

Range: 1–100 (default: 75)

■ EQUALIZER (3-band parametric EQ)

Use this to increase or decrease the levels of specific frequency ranges. This can be used, for example, to enhance the sound of individual instruments, to adjust the balance of a wide frequency range and to cut specific unwanted frequencies.



The frequency response at the current settings is shown as a graph even when the equalizer is off.

The equalizer has a high-shelf HIGH band, a low-shelf LOW band and a peaking (bell-shaped) MID band.

LOW GAIN knob

Sets the amount the level is increased or decreased for the LOW band.

Range: ± 12 dB (default: 0 dB)

LOW FREQ knob

Sets the cutoff frequency of the LOW band.

Range: 32 Hz–1.6 kHz (default: 100 Hz)

MID GAIN knob

Sets the amount the level is increased or decreased for the MID band.

Range: ± 12 dB (default: 0 dB)

MID FREQ knob

Sets the cutoff frequency of the MID band.

Range: 32 Hz–18 kHz (default: 1.0 kHz)

MID Q knob

Sets the acuteness of the peak of the MID BAND.

The higher the value the more acute it becomes, making it affect a narrower frequency band.

The lower the value, the less acute it becomes, making it affect a broader frequency band.

Range: 0.25–16 (default: 0.5)

HIGH GAIN knob

Sets the amount the level is increased or decreased for the HIGH band.

Range: ± 12 dB (default: 0 dB)

HIGH FREQ knob

Sets the cutoff frequency of the HIGH band.

Range: 1.7 kHz–18 kHz (default: 10 kHz)

5 – Mixer Panel Settings

Send effect

■ REVERB

This effect adds reverberations to the original sound. Multiple sounds are delayed at various times with damping over time that is as natural as possible to produce reverberations like those of a hall, live-music club or studio, for example.



Reverb type switch

Use to select the type of reverb.

Depending on the type, the density and level of the reverb sound changes.

Options: HALL (default), ROOM, LIVE, STUDIO, PLATE

PRE DELAY knob

Set the amount of delay until the first reverberations.

The larger the value, the larger the reverberations make the room sound.

Range: 0–250 ms (default: 42 ms)

REVERB TIME knob

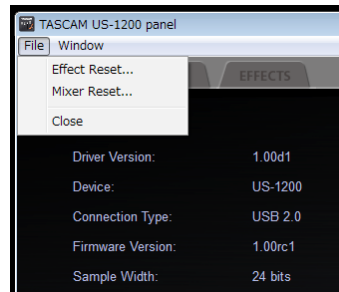
Set the amount of time that the reverberations continue.

The larger the value, the longer they continue.

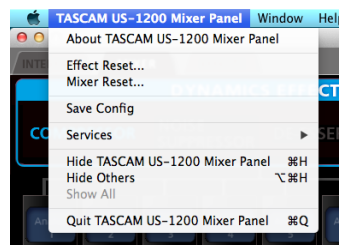
Range: 0.1–10 s (default: 2.7 s)

Restoring settings to default values

To reset the mixer settings to their original values, use the Windows File menu or the Mac TASCAM US-1200 Mixer Panel menu.



Windows Mixer Panel menu



Mac Mixer Panel menu

■ Effect Reset

Select this to reset all the settings on the EFFECTS page. (See “Resetting the effect settings” on page 25.)

■ Mixer Reset

Select this to reset the settings on the MIXER page. (See “Resetting the mixer settings” on page 25.)

■ Close

Select to close the Mixer Panel.

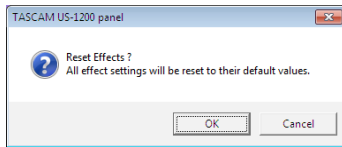
Resetting the effect settings

Select this to reset all the settings on the EFFECTS page.

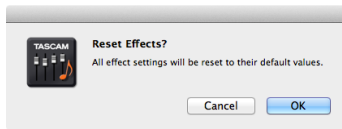
CAUTION

After resetting, you cannot restore the previous settings.

1. In the menu bar, Click "File" on a Windows PC or click "TASCAM US-1200 Mixer Panel" on a Mac to open a pulldown menu, and click "Effect Reset..."
The following confirmation message will appear.



Windows confirmation message



Mac confirmation message

2. Click the "OK" button in the message window to reset the effect settings to their default values.
The items reset are as follows.
 - COMPRESSOR
THRESHOLD, RATIO, ATTACK, RELEASE, GAIN
 - NOISE SUPPRESSOR
THRESHOLD, SUPPRESSION, ATTACK, RELEASE
 - DE-ESSER
FREQUENCY, DEPTH
 - EXCITER
FREQUENCY, DEPTH
 - EQ
GAIN for all frequency bands (LOW, MID, HIGH) and MID
FREQ Q
 - REVERB
ROOM TYPE, PRE DELAY, REVERB TIME

NOTE

- Click the "Cancel" button to return to the Mixer Panel without resetting.
- The Effect Reset function does not change the effect on/off status or the dynamics effect assignment. Use the Mixer Reset function to restore these settings to their defaults. See the effect explanations for the default settings of each effect.

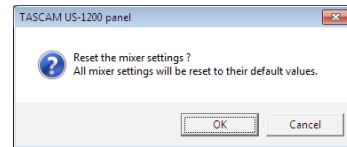
Resetting the mixer settings

Select this to reset the settings on the MIXER page.

CAUTION

After resetting, you cannot restore the previous settings.

1. In the menu bar, Click "File" on a Windows PC or click "TASCAM US-1200 Mixer Panel" on a Mac to open a pulldown menu, and click "Mixer Reset..."
The following confirmation message will appear.



Windows confirmation message



Mac confirmation message

2. Click the "OK" button in the message window to reset the mixer settings and related settings to their default values.
The items reset and their default values are as follows.

The following items on the INTERFACE page

 - LINE OUTPUTS 1-2: mixer output L-R

The following items on the MIXER page

 - Dynamics effects: off
 - Dynamics effects assignment buttons: off
 - Effects send selection buttons (all channels): POST
 - SEND knobs (all channels): 127
 - SOLO buttons (all channels): off
 - MUTE buttons (all channels): off
 - Pan sliders (all channels): center (C)
 - Channel faders (all channels): 0 dB
 - LINK buttons (all channel pairs): off
 - Send effect: off
 - SEND knob: 127
 - RETURN knob: 64
 - Master fader: 0 dB
 - MON MIX: Center

NOTE

Click the "Cancel" button to return to the Mixer Panel without resetting.

6 – Application Guide

In this chapter, we explain how to set some audio applications for use with this unit.

■ DAW software

Settings are made in different ways according to the DAW. When using a DAW, consult its operation manual.

Windows XP and Windows Media Player

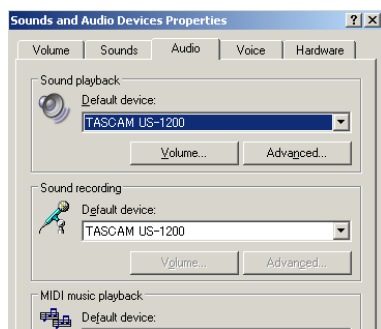
1. Quit all applications and open the Control Panel from the Start menu.
2. Click “Sounds and Audio Devices” to open the “Sounds and Audio Devices Properties” window.

NOTE

If you do not see this item, click “Sounds, Speech, and Audio Devices” to show it.



3. Click the “Audio” tab to open the “Audio” page.
4. For the “Sound playback” item, set the “Default device” to “TASCAM US-1200”.



NOTE

To use this unit as a recording device, for the “Sound recording” item, set the “Default device” to “TASCAM US-1200”.

5. After completing the setting, click the “OK” button.
6. Launch Windows Media Player, select an audio file and start playback.

NOTE

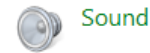
- *If you change the setting while Windows Media Player is running, the software will not recognize that the device has been changed. In this case, restart Windows Media Player.*
- *If you still cannot hear sound after making the settings and completing the procedures above, restart the computer.*
- *If you make this setting, sound will be output through this unit, but no sound will be output from the computer’s speakers or headphone jack.*
- *By default, the mixer pan settings are set to the center (C). For this reason, sounds playing back will be heard as mono. Adjust the built-in mixer settings as necessary. (See “MIXER page” on page 18.)*

Windows 7 and Windows Media Player

1. Quit all applications and open the Control Panel from the Start button menu.
2. Open “Sound”.

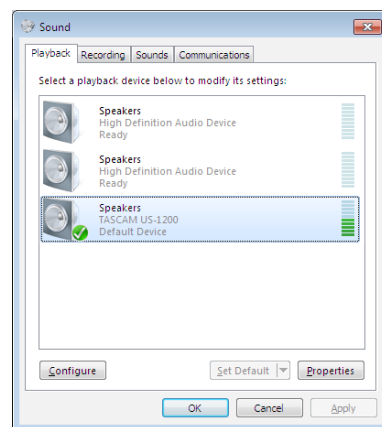
NOTE

If you do not see this item, click “Hardware and Sound” to show it.



3. On the “Playback” page, right-click “Speakers TASCAM US-1200”, and click “Set as Default Device” in the pop-up menu that appears.

When you do this, the green check mark (✓) appears next to “Speakers TASCAM US-1200”.



NOTE

To use this unit as a recording device, on the “Recording” page, right-click “Line In TASCAM US-1200” and click “Set as Default Device” in the pop-up menu that appears.

4. After completing the setting, click the “OK” button.
5. Start Windows Media Player, select an audio file and begin playback.

NOTE

- *If you change the setting while Windows Media Player is running, the software will not recognize that the device has been changed. In this case, restart Windows Media Player.*
- *If you still cannot hear sound after making the settings and completing the procedures above, restart the computer.*
- *If you make this setting, sound will be output through this unit, but no sound will be output by the computer’s speakers or headphone jack.*
- *By default, the mixer pan settings are set to the center (C). For this reason, sounds playing back will be heard as mono. Adjust the built-in mixer settings as necessary. (See “MIXER page” on page 18.)*

Windows 8 and Windows Media Player

1. Quit all applications and right-click the Start screen and then click the "All apps" button that is at the bottom right of the screen to open the Apps screen.

NOTE

In Windows 8.1, click the ↓ icon that appears at the bottom right of the start screen.

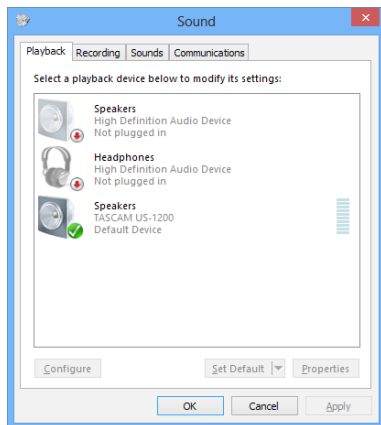
2. Click "Control Panel".

NOTE

You can also open the Control Panel by clicking the Control Panel item in the menu that appears if you right-click the bottom left corner of the desktop.

3. After clicking "Hardware and Sound", open the Sound screen.
4. On the "Playback" page, right-click "Speakers TASCAM US-1200", and click "Set as Default Device" in the pop-up menu that appears.

When you do this, the green check mark (✓) appears next to "Speakers TASCAM US-1200".



NOTE

To use this unit as a recording device, on the "Recording" page, right-click "Line in TASCAM US-1200" and click "Set as Default Device" in the pop-up menu that appears.

5. After completing the setting, click the "OK" button.
6. Launch Windows Media Player, select an audio file and start playback.

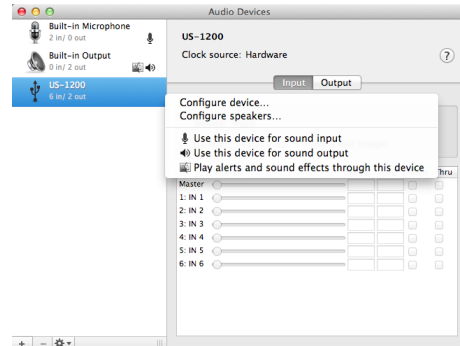
NOTE

- If you change the setting while Windows Media Player is running, the software will not recognize that the device has been changed. In this case, restart Windows Media Player.
- If you still cannot hear sound after making the settings and completing the procedures above, restart the computer.
- If you make this setting, sound will be output through this unit, but no sound will be output from the computer's speakers or headphone jack.
- By default, the mixer pan settings are set to the center (C). For this reason, sounds playing back will be heard as mono. Adjust the built-in mixer settings as necessary. (See "MIXER page" on page 18.)

Mac OS X and iTunes

1. Double-click the Audio MIDI Setup application, which is in the Utilities subfolder of the Applications folder, and then open the Audio Devices window.
2. Click "US-1200" to select it, and right-click or control-click "US-1200". Then, click "Use this device for sound output" in the pop-up menu.

The speaker mark appears next to "US-1200".



NOTE

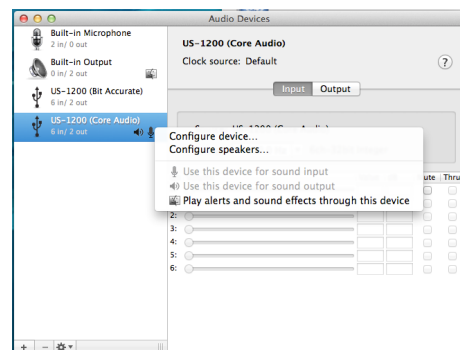
To use this device as the recording device, select "Use this device for sound input" for the "US-1200".

3. Launch iTunes, select an audio file and start playback.

Using Audio MIDI setup in OS X Mavericks (10.9)

In OS X Mavericks (10.9), two options appear in the Audio Devices list: US-1200 (Bit Accurate) and US-1200 (Core Audio). Only the "US-1200 (Bit Accurate)" setting can be used as the input or output device.

Do not use the "US-1200 (Bit Accurate)" option.



NOTE

- When the "US-1200 (Bit Accurate)" option can be selected in a DAW or other software, using it should make recording and playback more stable.
- The "US-1200 (Bit Accurate)" option cannot be used with applications downloaded from the Mac App Store. Use the "US-1200 (Core Audio)" option with such applications.

7 – Troubleshooting

Please read this chapter if you are unable to use the unit properly even after setting it up following the procedures in this manual.

If you are still unable to resolve a problem, please contact TASCAM customer support with the following information about the operating environment and details about the trouble.

■ Operating environment

- Computer manufacturer:
- Model:
- CPU:
- Memory (RAM):
- Operating system:
- Applications used:
- Antivirus software:
- Wireless LAN use:

See the end of this document for contact information.

■ Installation fails.

Installation completes, but the computer does not recognize the unit.

If some trouble is causing installation to fail, or installation completes but the computer does not recognize the unit, check the following.

1) Change the USB port

Since the unit might not properly function with some USB ports, try connecting it to a different USB port (that is built into the computer), and reinstall the driver.

NOTE

- *Try again after disconnecting other USB devices. (Keyboards and mice can be left connected.)*
- *Do not use a USB hub. Always connect the unit directly to a USB port on the computer (built-in)*

Stop software that is running in the background

Since antivirus software and other software running in the background can interfere with installation, stop them before beginning installation.

See "Installing the driver" on page 9 in this manual for how to install and uninstall the driver.

■ There is no sound even when audio is playing back.

The audio output must be set on the computer.

Please confirm the following while the unit is connected to the computer. Moreover, if you make the following settings, sound will be output through this unit, but no sound will be output by the computer's speakers or headphone jack.

Windows XP/7/8

Make the settings explained in Chapter 6 according to the operating system.

Conduct procedures 1–4 for Windows 8 or procedures 1–3 for Windows XP/7 to set the default device for playback.

Mac OS X

1. Quit all applications and open "System Preferences..." from the Apple menu.
2. Open "Sound".
3. On the Output tab, select "US-1200".

After completing the setting, restart the computer and check the sound of playback. Depending on the application that you are using, you might need to make additional device settings. In particular, DAW software operates using audio engines with settings that are different from the OS settings, so confirm the DAW driver settings first after installing the driver for this unit.

Please see the manuals for the applications that you are using for detailed setting procedures.

■ Sound breaks up or there is noise.

The processing load on the computer causes sound to break up and noise to occur.

Here are some methods to reduce the load on the computer.

1) Wireless networks and software (including antivirus software) running in the background puts processing loads on the computer that can cause the sound to break up and other noise.

Stop wireless LAN transmission, antivirus software and other software running in the background when using this unit.

2) Set the buffer size (latency) in the audio application that you are using or in this unit's Mixer Panel to a larger value.

NOTE

Consult the maker of the audio application that you are using for ways to reduce its load on your computer.

3) Change the settings of your computer so that they are optimal for audio processing.

Windows 8

1. In Windows 8, right-click the ordinary Start screen (Metro user interface screen) and then click "All apps".
2. Right-click "Computer" and select "Properties".
3. Click "Advanced system settings".
4. On the Advanced tab of the System Properties window, click "Settings..." in the Performance section.
5. On the Visual Effects tab of the Performance Options window, select "Adjust for best performance".

Windows 7

a) Turn Aero off.

1. Right-click the desktop and select "Personalize".
2. Select one of the "Basic and High Contrast Themes".

b) Performance settings

1. Right-click "Computer" and select "Properties".
2. Click "Advanced system settings".
3. On the Advanced tab of the System Properties window, click "Settings..." in the Performance section.
4. On the Visual Effects tab of the Performance Options window, select "Adjust for best performance".

Windows XP

1. Right-click "My Computer" and select "Properties".
2. Click the "Advanced" tab.
3. Click "Settings" in the Performance section.
4. In the Performance Options window, select "Adjust for best performance".

Mac OS X

1. Select "System Preferences..." from the Apple menu, and open the Energy Saver pane.
2. Set "Computer sleep" to "Never".
3. Set "Display sleep" to "Never".

NOTE

Depending on the Mac OS X version and Macintosh computer model, this setting might not be available.

■ Something is wrong with the volume.

A mixer function might be affecting the volume.

Open the MIXER page of the Mixer Panel and check all the settings.

■ Something is wrong with the sound.

A built-in effect might be changing the sound quality. Open the EFFECTS page of the Mixer Panel and check all the settings.

8 – Specifications

Audio resolution

■ Sampling frequencies

44.1, 48, 88.2, 96 kHz

■ Quantization bit depth

16/24-bit

Analog audio input and output ratings

Analog inputs

■ Mic inputs (MIC IN 1–4)

Balanced

Connectors: XLR-3-31 equivalent
(1: GND, 2: HOT, 3: COLD)

Input impedance: 2.2 k Ω

Rated input level (gain knob at MAX): –68 dBu (0.0003 Vrms)

Rated input level (gain knob at MIN): –22 dBu (0.0616 Vrms)

Maximum input level: –6 dBu (0.3884 Vrms)

Headroom: 16 dB

■ Guitar inputs (GUITAR 5-6)

Unbalanced

(when **GUITAR/LINE IN** switch set to **GUITAR** (⏏))

Connectors: 6.3mm (1/4") standard TS jacks
(Tip: HOT, Sleeve: GND)

Input impedance: 800 k Ω

Rated input level (gain knob at MAX): –51 dBV (0.0028 Vrms)

Rated input level (gain knob at MIN): –6 dBV (1.995 Vrms)

Maximum input level: +10 dBV (3.162 Vrms)

Headroom: 16 dB

■ Line inputs (LINE IN 5-6)

Balanced

(when **GUITAR/LINE IN** switch set to **LINE IN** (⏏))

Connectors: 6.3mm (1/4") standard TRS jacks
(Tip: HOT, Ring: COLD, Sleeve: GND)

Input impedance: 10 k Ω

Rated input level (gain knob at MAX): –41 dBu (0.0069 Vrms)

Rated input level (gain knob at MIN): +4 dBu (1.228 Vrms)

Maximum input level: +20 dBu (7.75 Vrms)

Headroom: 16 dB

Analog outputs

■ Monitor outputs (OUTPUT (BALANCED) L/R)

Connectors: 6.3mm (1/4") standard TRS jacks
(Tip: HOT, Ring: COLD, Sleeve: GND)

Output impedance: 100 Ω

Rated output level: +4 dBu (1.273 Vrms)

Maximum output level: +24 dBu (12.283 Vrms)

■ Headphone output (PHONES)

Connector: 6.3mm (1/4") standard stereo jack

Maximum output: 50 mW + 50 mW or higher (THD+N 1% or less, into 32 Ω load)

Control input/output

■ USB

Connector: 4-pin USB B-type

Transfer rate: USB 2.0 High Speed (480 Mbps)

Audio performance

■ Frequency response

MIC IN to OUTPUT(BALANCED)

20 Hz – 20 kHz ± 1 dB (44.1/48 kHz, JEITA)

20 Hz – 40 kHz ± 2 dB (88.2/96 kHz, JEITA)

LINE IN to OUTPUT(BALANCED)

20 Hz – 20 kHz ± 1 dB (44.1/48 kHz, JEITA)

20 Hz – 40 kHz ± 2 dB (88.2/96 kHz, JEITA)

■ S/N ratio

95 dB or higher (**MIC IN** to **OUTPUT(BALANCED)**, gain knob at MIN, JEITA)

95 dB or higher (**LINE IN** to **OUTPUT(BALANCED)**, gain knob at MIN, JEITA)

■ Distortion

0.01% or less (**MIC IN** to **OUTPUT(BALANCED)**, 1kHz sine wave, at maximum input, JEITA)

0.01% or less (**LINE IN** to **OUTPUT(BALANCED)**, 1kHz sine wave, at maximum input, JEITA)

■ Crosstalk

90 dB or more (**MIC IN** to **OUTPUT(BALANCED)**, 1 kHz)

90 dB or more (**LINE IN** to **OUTPUT(BALANCED)**, 1 kHz)

Computer system requirements

Check the TEAC Global Site (<http://teac-global.com/>) for the latest information about supported operating systems.

Windows

■ Supported operating systems

Windows 8 (including 8.1) 32-bit
Windows 8 (including 8.1) 64-bit
Windows 7 32-bit SP1 or later
Windows 7 64-bit SP1 or later
Windows XP 32-bit SP3 or later
(Windows Vista 32-bit/64-bit and Windows XP 64-bit are not supported)

■ Computer hardware requirements

Windows computer with a USB 2.0 port

■ CPU/processor speed

2 GHz or faster dual core processor (x86)

■ Memory

2 GB or more

CAUTION

Operation of this unit was confirmed using standard computers that meet the above requirements. This does not guarantee operation with all computers that meet the above requirements. Even computers that meet the same system requirements might have processing capabilities that differ according to their settings and other operating conditions

Mac OS X

■ Supported operating systems

Mavericks (10.9.1 or later)
Mountain Lion (10.8.4 or later)
Lion (10.7.5 or later)
Snow Leopard (10.6.8 or later)

■ Computer hardware requirements

Apple Macintosh computer with a USB 2.0 port

■ CPU/processor speed

2 GHz or faster dual core processor

■ Memory

2 GB or more

Supported audio drivers

ASIO 2.0, WDM (MME)
Core Audio

General

■ Power

Specialized AC adapter (GPE248-120200-Z)

■ Power consumption

5.5W

■ External dimensions

482.6 × 45 × 300.4 mm (width × height × depth)

■ Weight

2.9 Kg

■ Operating temperature range

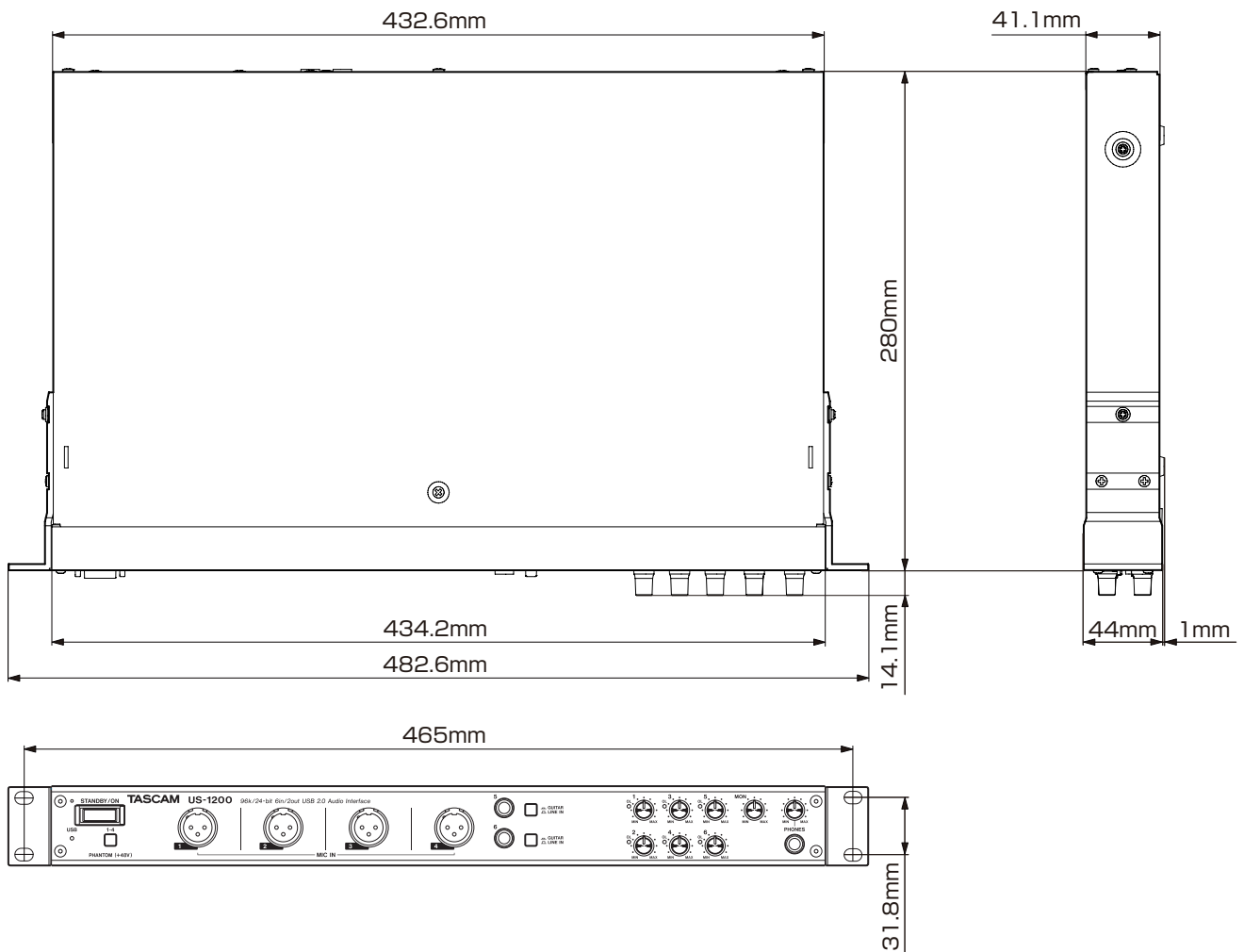
5–35 °C

■ Bundled software

SONAR LE (for Windows only)
Ableton Live Lite

8 – Specifications

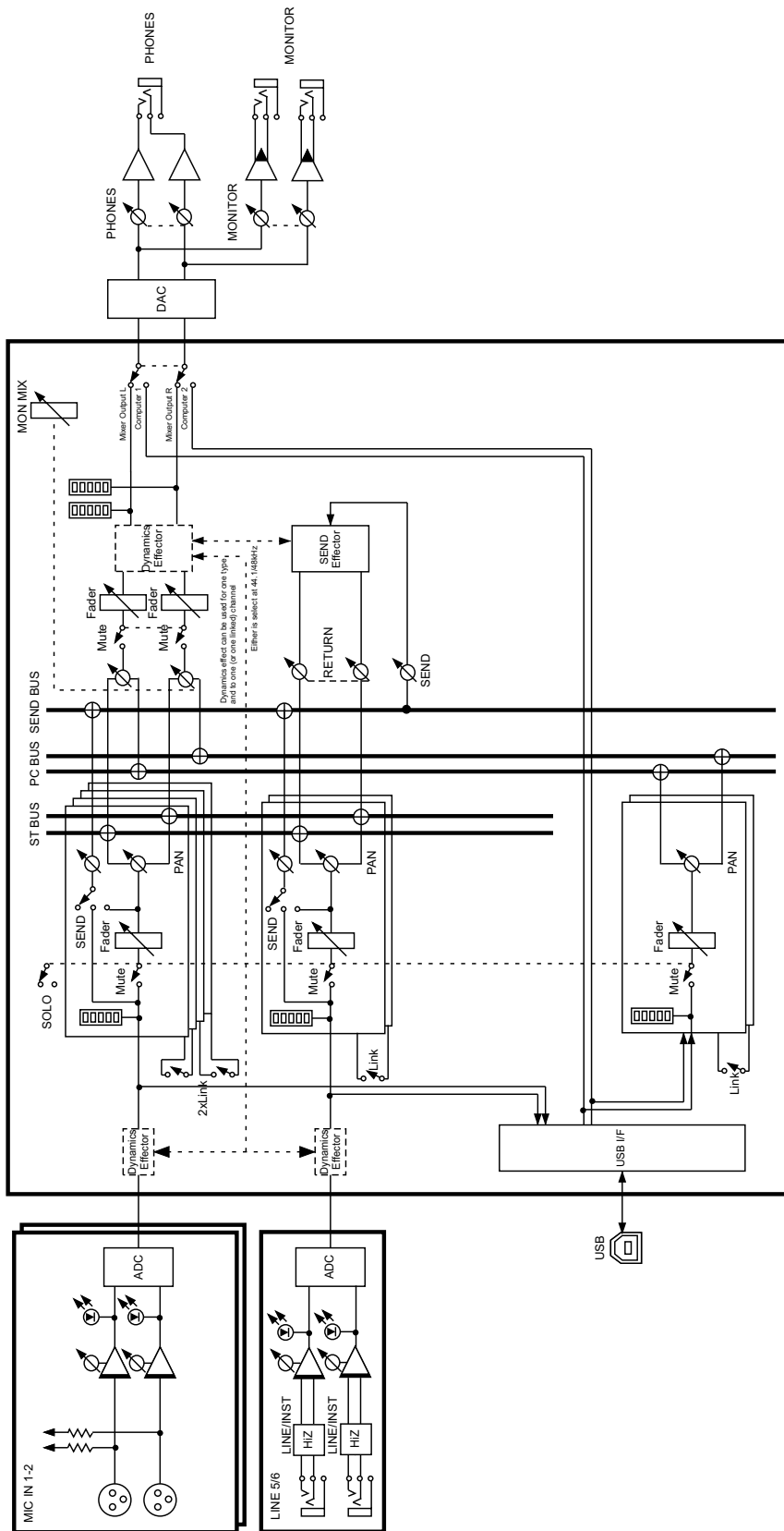
Dimensional drawings



- Illustrations in this manual might differ in part from the actual product.
- Specifications and external appearance might be changed without notification to improve the product.

Audio flow diagram

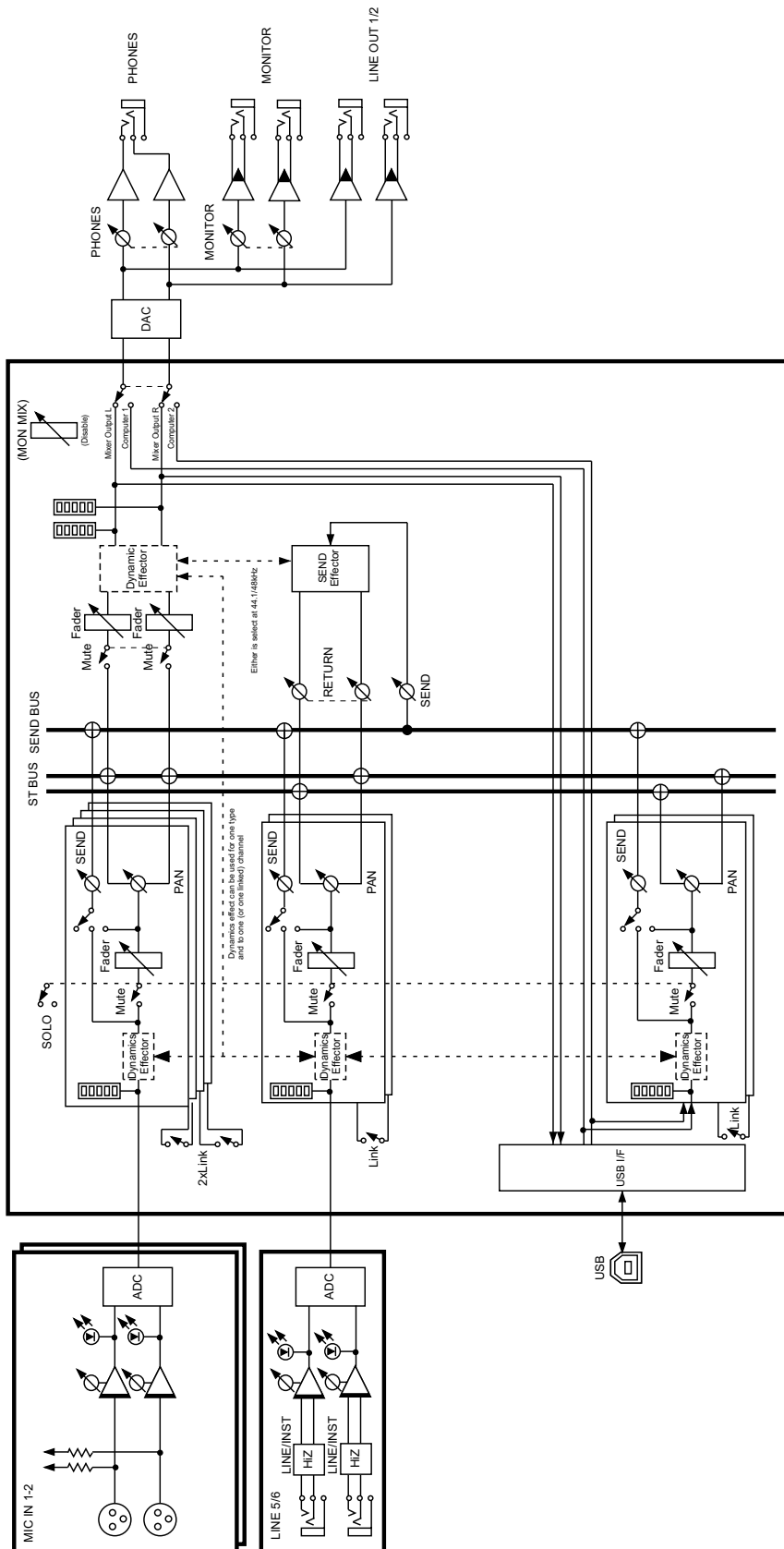
■ Multitrack mode



US-1200 Multi Track Mode
rev. X03

8 – Specifications

■ Stereo mix mode



US-1200 Stereo Mix Mode
rev. X03

TASCAM

US-1200

TEAC CORPORATION

Phone: +81-42-356-9143

1-47 Ochiai, Tama-shi, Tokyo 206-8530 Japan

<http://tascam.jp/>

TEAC AMERICA, INC.

Phone: +1-323-726-0303

7733 Telegraph Road, Montebello, California 90640 USA

<http://tascam.com/>

TEAC MEXICO, S.A. de C.V.

Phone: +52-55-5010-6000

Río Churubusco 364, Colonia Del Carmen, Delegación Coyoacán, CP 04100, México DF, México

<http://teacmexico.net/>

TEAC UK LIMITED

Phone: +44-8451-302511

Meridien House, Ground Floor, 69 - 71, Clarendon Road, Watford, Hertfordshire, WD17 1DS, UK

<http://tascam.eu/>

TEAC EUROPE GmbH

Phone: +49-611-71580

Bahnstrasse 12, 65205 Wiesbaden-Erbenheim, Germany

<http://tascam.eu/>

TEAC SALES & TRADING(SHENZHEN) CO., LTD

Phone: +86-755-88311561~2

Room 817, Block A, Hailrun Complex, 6021 Shennan Blvd., Futian District, Shenzhen 518040, China

Printed in China

Free Manuals Download Website

<http://myh66.com>

<http://usermanuals.us>

<http://www.somanuals.com>

<http://www.4manuals.cc>

<http://www.manual-lib.com>

<http://www.404manual.com>

<http://www.luxmanual.com>

<http://aubethermostatmanual.com>

Golf course search by state

<http://golfingnear.com>

Email search by domain

<http://emailbydomain.com>

Auto manuals search

<http://auto.somanuals.com>

TV manuals search

<http://tv.somanuals.com>