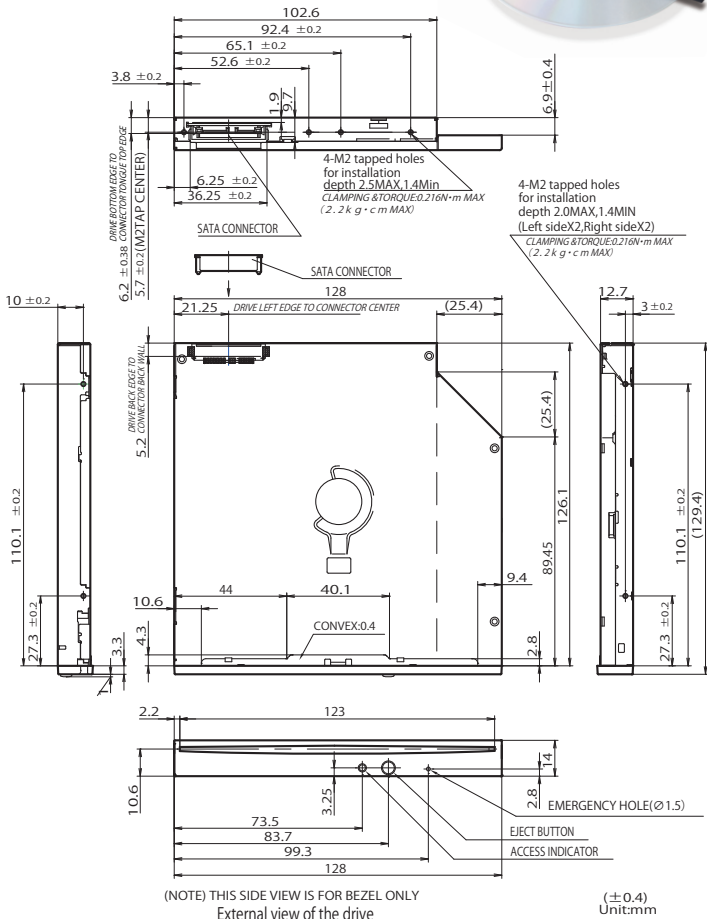




Slot Loading



(NOTE) THIS SIDE VIEW IS FOR BEZEL ONLY External view of the drive (±0.4) Unit:mm

# NEW Product Information

## DV-W28SS-V Slot-Loading Drive

4.7GB / 8.5GB Half-inch-height DVD Super Multi Drive

**8x DVD±R** **8x DVD+RW**  
**6x DVD±R DL** **6x DVD-RW**

- Slim type Slot Loading design
- Zero Power ODD Support
- Supporting disc-at-once, session-at-once, packet write, incremental, over write, track-at-once recording mode, sequential write, multi-session, and back ground format
- Horizontal and vertical mounting for most system configuration
- One Push Emergency Eject Function

Write Speed ( Max Speed )	DVD+R	8x ( P-CAV ),	
	DVD+R DL	6x ( ZCLV ),	
	DVD-R	8x ( P-CAV ),	
	DVD-R DL	6x ( ZCLV ),	
	DVD+RW	8x ( ZCLV ),	
	DVD-RW	6x ( ZCLV ),	
	DVD-RAM	5x ( P-CAV ),	
	CD-R	24x ( ZCLV ),	
	CD-RW	US+	16x ( ZCLV ),
		US	24x ( ZCLV ),
		HS	10x ( CLV ),
MS		4x ( CLV ),	

Read Speed ( Max Speed )	DVD-ROM	8x ( CAV )
	DVD±R	8x ( CAV )
	DVD±R DL ( Finalized Disc )	8x ( CAV )
	DVD-RAM ( 4.7G )	5x ( P-CAV )
	CD-ROM	24x ( CAV )
	CD-R	24x ( CAV )
	CD-RW ( DAE )	24x ( CAV )

Disc Diameter	12cm,
Interface	SerialATA Revision2.6
Data Transfer Rate	Gen1 i 1.5GB/sec
Access Time	130ms ( typ ) DVD-ROM 130ms ( typ ) CD-ROM

Data Buffer	1.5MB
Loading Mechanism	Slot Loading Type

Environmental Conditions		
Ambient Temperatures	Operating	5 to 45°C
	Non Operating	-20 to 60°C
	Transportation	-40 to 65°C

Ambient Humidity	Operating	10 to 80% ( non-condensing ) *
	Non Operating	10 to 90% ( non-condensing ) *
	Transportation	10 to 90% ( non-condensing ) *

Power Requirements	DC5V±5%	
Loading / Ejecting Life	10,000 times or more	
Current Consumption	Standby / Sleep	40mA / 40mA ( Average current max )
	During starting	1500mA ( Max, Spikes less 2ms )

MTBF	60,000POH ( 10% duty )
Safety/EMI Standards	UL, CUL, TUV, CB, CE and BSMI
Dimensions	128.0W x 12.7H x 129.4D ( mm )
Mass ( Weight )	160g or less
RoHS Directive	Complied

Remarks  
Please check the specification sheets for detailed conditions and other information.  
\* The maximum wet-bulb temp. is 29.4°C or less



is a trademark of DVD Format/Logo Licensing Corporation registered in the U.S., Japan and other countries.



and COMPACT disc ReWritable are trademarks of Koninklijke Philips Electronics N.V.

Corporate and product names are the respective trademarks or registered trademarks of the companies mentioned. Features and specifications are subject to change without notice. Precaution : To ensure safe handling and operation, read the Instruction Manual before use.

### TEAC CORPORATION Storage Device Division

TEAC CORPORATION ( <http://www.teac.co.jp> ) 1-47 Ochiai, Tama-shi, Tokyo 206-8530 Japan Phone:81-42-356-9153 Fax:81-42-356-9184

TEAC AMERICA, INC. ( <http://www.teac.com> ) 7733 Telegraph Road, Montebello, California 90640, U.S.A. Phone:1-323-726-0303 Fax:1-323-727-7656

TEAC EUROPE GmbH. ( <http://www.teac.de> ) Bahnstrasse 12, 65205 Wiesbaden-Erbenheim, Germany Phone:49-611-71580 Fax:49-611-7158-392

TAIWAN TEAC CORPORATION ( <http://www.teac.com.tw> ) 3F No.45, Sec.1 Min Chuan E. Road, 104 Taipei, Taiwan R.O.C. Phone:886-2-2597-8608 Fax:886-2-2597-8591

TEAC ELECTRONICS ( M ) SDN BHD ( <http://www.teac.com.my> ) Lot 22, Batu Berendam Ftz III, Batu Berendam, 75350 Melaka, Malaysia. Phone:60-6-2843402 Fax:60-6-2843471

© Copyright TEAC CORPORATION 2010

## Free Manuals Download Website

<http://myh66.com>

<http://usermanuals.us>

<http://www.somanuals.com>

<http://www.4manuals.cc>

<http://www.manual-lib.com>

<http://www.404manual.com>

<http://www.luxmanual.com>

<http://aubethermostatmanual.com>

Golf course search by state

<http://golfingnear.com>

Email search by domain

<http://emailbydomain.com>

Auto manuals search

<http://auto.somanuals.com>

TV manuals search

<http://tv.somanuals.com>