

PortaDVD User's Manual

8X DVD
24X CD-ROM

TEAC[®]

FCC Radio Frequency Interference Regulations

Warning: This equipment generates, uses, and can radiate radio frequency energy and if not installed and used in accordance with the instructions contained in this manual, may cause harmful interference to radio and television communications. This equipment has been tested and found to comply with the limits for a Class B digital device pursuant to Subpart J of Part 15 of the FCC Rules. These limits are designed to provide reasonable protection against harmful interference in a residential installation. However, there is no guarantee that interference will not occur in a particular installation. To ensure compliance with FCC rules, the cable that connects the unit to the computer must be a shielded interface cable.

Note: Connecting this device to peripheral devices that do not comply with Class B requirements or using an unshielded peripheral cable could result in interference to radio or television reception. To ensure that the use of this product does not contribute to interference, use a shielded interface cable.

If this equipment does cause harmful interference to radio or television reception (which can be determined by turning the equipment off and on), the user may try to correct the interference by one or more of the following measures:

- Reorient or relocate the receiving antenna
- Move the device and the receiver further apart
- Connect the equipment to an electrical outlet on a circuit different from that of the receiver
- Consult the dealer or an experienced audio television technician

Also, the following booklet may prove helpful: *How to Identify and Resolve Radio-TV Interference Problems*. It is available from the U.S. Government Printing Office, Washington, D.C. 20402, stock number 004-000-00345-4.

The user is cautioned that any changes or modifications to this equipment not expressly approved by TEAC America, Inc. could void the user's warranty.

Copyright and Trademark Information

© Copyright 2001 TEAC America, Inc. All rights reserved.

TEAC America, Inc. reserves the right to modify product offerings or specifications without advance notice. No part of this publication may be reproduced in any format without the express written permission of TEAC America, Inc.

TEAC is a registered trademark of TEAC Corporation.

IBM and PC are registered trademarks of International Business Machines Corporation.

Windows, Windows 95, Windows 98, Windows Me, Windows 2000, and MS-DOS are trademarks or registered trademarks of Microsoft Corporation.

DVDExpress is a trademark of Mediamatics, Inc.

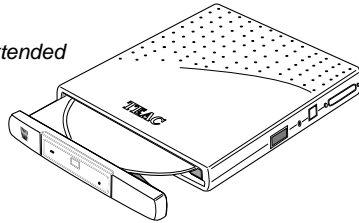
All other trademarks and registered trademarks are the property of their respective owners.

Safety Information

The TEAC PortaDVD uses an invisible laser beam that can damage your vision if you stare directly into it or view it with optical instruments when the disc tray is extended. Avoid direct visual contact with the laser beam.



disc tray extended



Caution: Use of controls or adjustments or performance of procedures other than those specified herein may result in hazardous radiation exposure.



| Optical Pickup | |
|----------------|--|
| Type | HPD-28 |
| Laser output | Less than 0.69mW on the objective lens |
| Wavelength | 770-795nm (CD) 640-660nm (DVD) |

| Declaration of Conformity | |
|---------------------------|---|
| Model Number: | DVE28E |
| Trade Name: | TEAC |
| Responsible Party: | TEAC AMERICA, Inc. |
| Address: | 7733 Telegraph Road Montebello, California 90640, U.S.A. |
| Telephone Number: | 1-323-726-0303 |

This device complies with part 15 of the FCC Rules. Operation is subject to the following two conditions: (1) This device may not cause harmful interference, and (2) This device must accept any interference received, including interference that may cause undesirable operation.

Table of Contents

| | |
|---|----|
| FCC Radio Frequency Interference Regulations | i |
| Copyright and Trademark Information | i |
| Safety Information | ii |
| List of Figures | iv |
| Introduction | 1 |
| Recommended System Requirements | 1 |
| Unpacking Your PortaDVD | 2 |
| Power Sources/Battery | 3 |
| Power Sources | 3 |
| Power Settings | 3 |
| Charging the Battery Pack | 3 |
| Removing the Battery Pack | 3 |
| Operating Orientation | 3 |
| Front and Right Panels | 4 |
| Connecting the PortaDVD | 6 |
| Connecting to Audio Equipment | 6 |
| Detecting the PCMCIA Card | 7 |
| Installing the PCMCIA Card Using the Windows PC Card Wizard | 9 |
| Installing the PortaDVD Driver Using the Windows Wizard | 11 |
| For Windows 98/Me/2000 | 11 |
| Installing and Using DVDEExpress | 14 |
| Installing DVDEExpress | 14 |
| Starting DVDEExpress | 17 |
| Handling Discs | 18 |
| Loading and Ejecting Discs | 18 |
| Loading a Disc | 18 |
| Ejecting a Disc | 19 |
| Specifications | 20 |
| Technical Support | 21 |

List of Figures

| | |
|---|----|
| Figure 1. Package Contents | 2 |
| Figure 2. Front and Right Panels | 4 |
| Figure 3. Connecting Cables | 6 |
| Figure 4. Control Panel | 7 |
| Figure 5. System Properties Panel | 7 |
| Figure 6. Welcome to PC Card Wizard | 9 |
| Figure 7. PC Card Wizard | 9 |
| Figure 8. PC Card Wizard | 10 |
| Figure 9. System Settings Change | 10 |
| Figure 10. Add New Hardware Wizard | 11 |
| Figure 11. Add New Hardware Wizard | 12 |
| Figure 12. Add New Hardware Wizard | 12 |
| Figure 13. Add New Hardware Wizard | 13 |
| Figure 14. Add New Hardware Wizard | 13 |
| Figure 15. System Settings Change | 13 |
| Figure 16. DVDExpress Control Panel | 14 |
| Figure 17. Installing DVD Express (1) | 15 |
| Figure 18. Installing DVD Express (2) | 15 |
| Figure 19. Installing DVD Express (3) | 16 |
| Figure 20. Installing DVD Express (4) | 16 |
| Figure 21. Installing DVD Express (5) | 17 |
| Figure 22. Handling Discs | 18 |
| Figure 23. Extending the Disc Tray | 18 |
| Figure 24. Inserting a Disc | 19 |

Introduction

Thank you for choosing the TEAC PortaDVD (model DVE28E).

This durable, portable, external DVD drive can read DVD discs at up to 8X DVD speed and CD-ROM discs at a maximum of 24X speed. It is designed for use with IBM PC/AT compatible portable computers that utilize PCMCIA card technology.

The slim design of the TEAC PortaDVD makes it ideal for portable use. The integrated rechargeable battery provides drive power when the AC adapter is disconnected from the drive.

The PortaDVD features a disc tray that extends forward to facilitate the loading and unloading of discs.

Please read this manual in its entirety before you begin the installation procedure.

Recommended System Requirements

The following items represent the minimum system requirements for successful operation of the PortaDVD.

- Portable IBM PC-compatible computer, Pentium II 400MHz or higher with integrated sound card and speakers
- 4MB of Video RAM (minimum)
- 64MB RAM (minimum)
- Microsoft Windows 98/Me/2000
- PCMCIA Card Type II slot (for DVD video playback, an activated zoomed video PCMCIA slot)
- 3.5" floppy disk drive for software installation

Unpacking Your PortaDVD

Your TEAC PortaDVD and accessories are packaged in a sturdy shipping container. Please verify that the following items are included in the package (see Figure 1).

If an item is missing, contact the dealer from whom you purchased the drive.

- PortaDVD portable DVD drive
- AC adapter
- PCMCIA card/cable
- DVD player software CD-ROM
- Installation software floppy disk
- TEAC PortaDVD User's Manual* (this document)

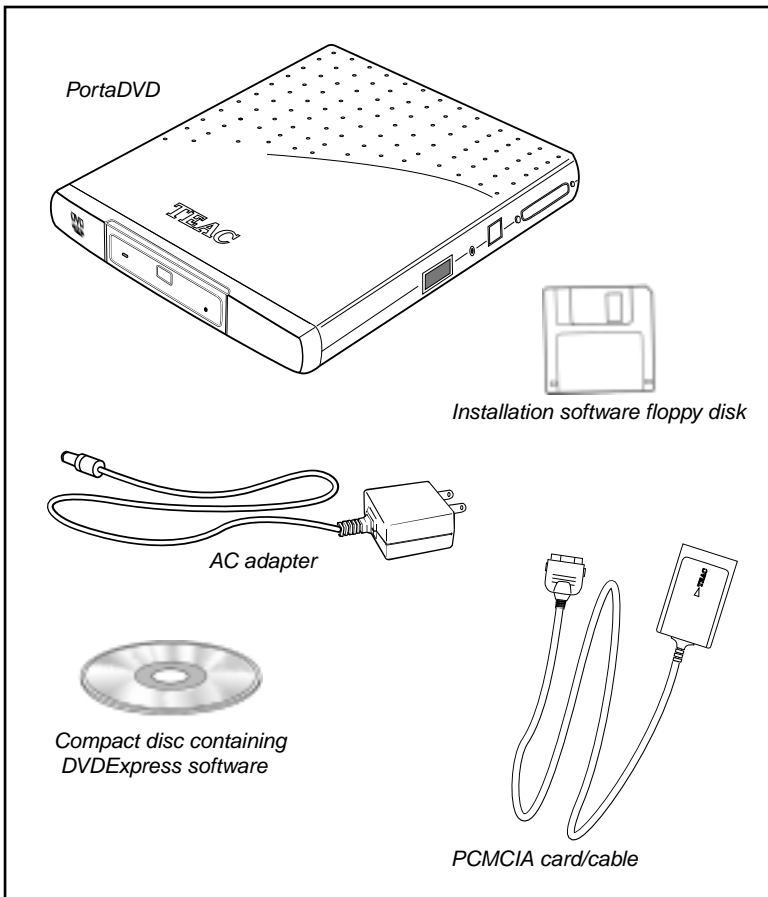


Figure 1. Package Contents

Power Sources/Battery

This section provides information on the power sources available to the PortaDVD, including the battery and the AC adapter.

Power Sources

The PortaDVD drive does not have an On/Off switch. It is ready for operation when connected to the computer under one of these power sources:

- AC adapter
- Charged integrated battery pack
- Portable computer using PCMCIA card

Power Settings

The power supply selection switch has two settings:

1. Set the power supply selection switch (see page 4) to “Batt./DC” to power the drive via the integrated battery pack or the AC adapter. If the AC adapter is connected, it will supply power to the drive. If the AC adapter is not connected and the battery pack is charged, the drive will be powered by the battery pack.
2. Set the power supply selection switch to “PC” to power the drive via the PCMCIA cable.

Charging the Battery Pack

The integrated battery pack can be charged automatically when the AC adapter is connected to the drive and plugged into an electrical outlet. The drive does not have to be connected to the computer to charge the battery pack. Allow up to five hours for the initial charge time to fully charge an empty battery pack. A fully charged battery will last up to two hours.

Removing the Battery Pack

When removing the battery pack, do not use a metal object. Doing so could short circuit the battery pack or damage the drive.

Only use TEAC integrated rechargeable battery packs. Standard commercial batteries could damage the drive.

Operating Orientation

Place the TEAC PortaDVD drive on a stable, level surface for operation. The surface should be within 10° of horizontal.

| |
|---|
| <p><i>Caution: Do not operate the drive upside-down (i.e., with the TEAC logo facing down).</i></p> |
|---|

Front and Right Panels

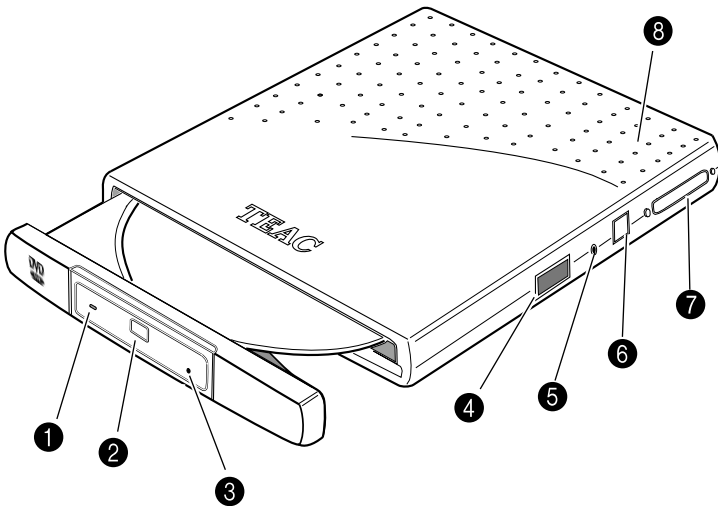


Figure 2. Front and Right Panels

- 1 On/Busy indicator:** This LED indicator lights up during seek/ data transfer and flashes to indicate that the drive is in seek, play, or read mode.
- 2 Eject button:** Press the Eject button to release the disc tray from the drive. Gently pull the disc tray to open it, or push to close. Certain software can control disc eject.

Caution: Do not forcefully pull open or close the disc tray by hand or you may damage the unit.

- 3 Emergency eject mechanism:** To eject a disc when the standard means fail, insert a slender, straight tool (such as a straightened paper clip) into the emergency eject hole. Press firmly to partially extend the disc tray.
- 4 Power supply selection switch:** Use this switch to set the power source for the PortaDVD drive. Refer to “Power Sources/Battery” on page 3.
- 5 Line out audio/ headphone jack:** You can connect headphones or external speakers to this 3.5 mm stereo mini-jack. See “Connecting to Audio Equipment” on page 6 for more information.
- 6 AC Power input:** Connect the AC adapter to this plug.

- 7 **Interface connector:** Connect the plug end of the provided PCMCIA interface cable to this connector. (See “Connecting the PortaDVD” on page 6 for more information.)
- 8 **Power LED:** This LED indicates the power state of the PortaDVD.

| LED | AC Adapter | Drive | Battery |
|----------------------------|----------------|--------------|--|
| Off | — | Disconnected | Off |
| Green | Not plugged in | Connected | Powered by battery |
| Red | Plugged in | Disconnected | Battery is being charged |
| Blinking red | Plugged in | Disconnected | Battery is fully charged |
| Orange | Plugged in | Connected | Battery is being charged and drive powered by AC adapter |
| Green with blinking orange | Plugged in | Connected | Battery is fully charged and drive powered by AC adapter |

Connecting the PortaDVD

This section explains how to connect the PortaDVD to an IBM PC or compatible portable computer that utilizes PCMCIA card technology. The procedure begins by connecting the appropriate cables to the PortaDVD. Please read the following instructions thoroughly; the installation procedure varies depending on the operating system you are using.

3. **Connect the PCMCIA cable plug to the interface connector on the side panel of the PortaDVD (Figure 3).**
4. **Do not insert the PCMCIA card into the computer at this time.**

With Windows 98/Me/2000, the PortaDVD enables you to perform a “hot swap” installation while the computer is powered on. You will insert the card for the first time later as part of the software installation procedure.

5. **Connect the AC adapter cable to the AC power input on the drive (Figure 3).**

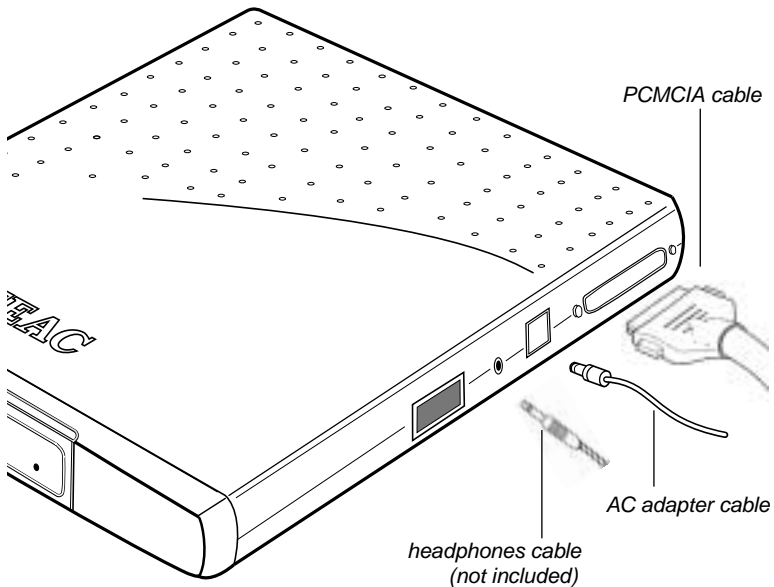


Figure 3. Connecting Cables

Connecting to Audio Equipment

The PortaDVD outputs a line-level audio signal from the headphone jack. You can connect a 3.5 mm stereo mini-plug to the headphone jack (see Figure 3 on page 6) to enjoy digital audio.

Detecting the PCMCIA Card

Before you can operate the PortaDVD, you must:

- make sure Windows recognizes the PCMCIA socket, and
- install device driver software on your computer's hard disk.

To determine whether Windows recognizes the PCMCIA socket in your computer, follow these steps, which may vary slightly with your version of Windows.

1. **Click the left mouse button on the Windows Start icon, and select Settings-->Control Panel from the pop-up menu.**

The system displays the Control Panel (Figure 4).

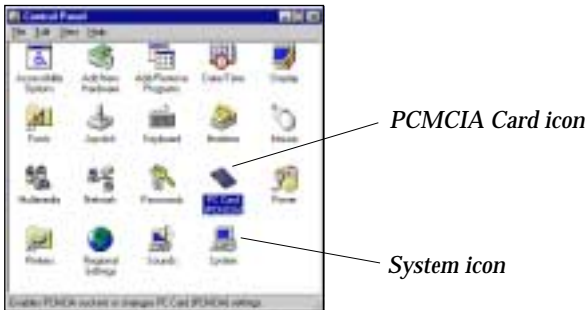


Figure 4. Control Panel

2. **Double-click the System icon on the Control Panel.**

The system displays the System Properties panel (Figure 5).

3. **Click the Device Manager tab on the System Properties panel.**

The system displays the Device Manager (Figure 5).

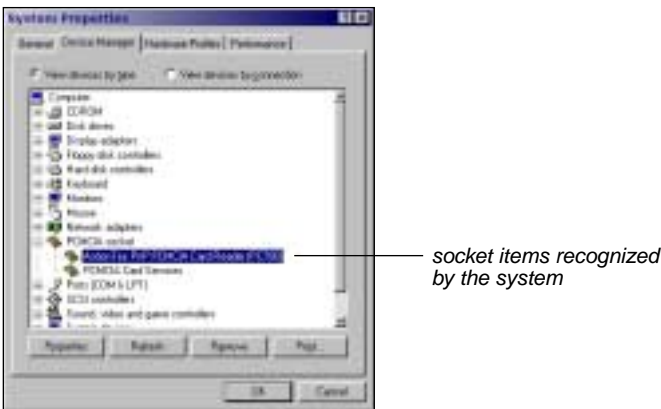


Figure 5. System Properties Panel

4. Double-click the item PCMCIA Socket on the Device Manager listing.

The Device Manager displays the PCMCIA Socket items currently recognized by the system (see Figure 5 on page 7).

If an “x” or “!” mark appears on an item, it is not currently recognized by the system. In this case, you must install the PCMCIA driver using the PCMCIA Card Wizard. (See “Installing the PCMCIA Card Using the Windows PC Card Wizard” on page 9.)

If the TEAC PCMCIA/IDE card is recognized by the system, proceed to “Installing the PortaDVD Driver Using the Windows Wizard” on page 11.

Note: If the PCMCIA Card icon does not appear in the Control Panel, try double-clicking the Add New Hardware icon and instruct the Wizard to search for new hardware.

Installing the PCMCIA Card Using the Windows PC Card Wizard

Follow the steps below to install the PCMCIA driver using the PC Card Wizard.

1. Open the Windows Control Panel.

To do so, click the Start button, and select Settings-->Control Panel from the pop-up menu.

2. On the Control Panel, double-click the PC Card (PCMCIA) icon.

The system displays the Welcome to the PC Card (PCMCIA) Wizard panel.



Figure 6. Welcome to PC Card Wizard

Follow the instructions on the PC Card Wizard panels to complete the installation.

Note: The system configuration and your dialog responses determine which panels the Wizard displays. Do not be concerned if your installation process varies slightly from the one described below. Simply follow the dialog presented.

3. Click the Next button.

The system displays the following panel.



Figure 7. PC Card Wizard

4. **Click the Next button.**

The system displays the following panel:



Figure 8. PC Card Wizard

5. **Click the Finish button.**

The system displays the following panel:

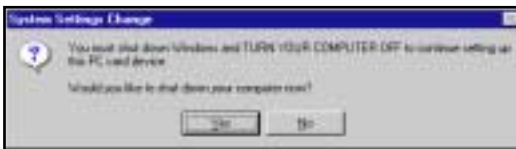


Figure 9. System Settings Change

6. **Click the Yes button to shut down the computer.**

The system shuts down the computer.

7. **Power on the computer.**

Installing the PortaDVD Driver Using the Windows Wizard

The following sections explain how to install the PCMCIA driver using the Windows Add New Hardware Wizard.

For Windows 98/Me/2000

The installation procedure for the PCMCIA Card Driver varies depending on the version of Windows 98/Me/2000 installed in your computer.

To install the driver on a Windows 98/Me/2000 system, follow these steps:

1. **Insert the PCMCIA card into the PCMCIA card slot in your laptop computer.**

The other end of the card/cable should already be connected to the interface connector on the PortaDVD. (For more information, see “Connecting the PortaDVD” on page 6.)

The system displays the initial Add New Hardware Wizard panel.



Figure 10. Add New Hardware Wizard

Note: The panels the Wizard displays are determined by your system configuration and your responses to the dialog. Do not be concerned if your installation process varies slightly from the one described. Please simply follow the dialog presented.

2. **Click the Next button to search for the driver.**

The system displays the following Add New Hardware Wizard panel, asking what you would like to do:



Figure 11. Add New Hardware Wizard

3. **Select the Search for best driver option, then click the Next button.**

The system displays the following Add New Hardware Wizard panel, asking you to specify the location of the driver:



Figure 12. Add New Hardware Wizard

4. **Insert the TEAC Installation Software for PCMCIA Card diskette in your computer's floppy disk drive.**
5. **Select the Floppy disk drives Wizard option, then click the Next button.**

The system displays the following Add New Hardware Wizard panel, indicating that Windows has located the driver:



Figure 13. Add New Hardware Wizard

6. Click the Next button.

The system displays the following Add New Hardware Wizard panel, indicating that installation is complete:



Figure 14. Add New Hardware Wizard

7. Click the Finish button.

The system displays the following panel:

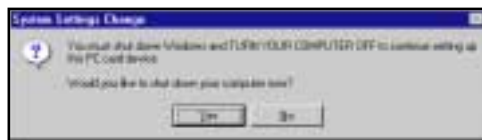


Figure 15. System Settings Change

8. Click the Yes button to shut down the computer.

The system shuts down the computer.

9. Remove the floppy diskette and restart the computer.

After you restart the computer, the system will assign a new drive letter and icon to the PortaDVD drive.

10. To fully utilize the drive, you should now install DVDEExpress software (see page 14).

Installing and Using DVDEExpress

DVDEExpress is full-featured multimedia control software that enables you to play DVD movies on your TEAC PortaDVD.

You can play, pause, rewind, and fast forward DVD movies. *DVDEExpress* also features several advanced controls, such as Volume, Camera Angle and Subtitles.

For more information on using *DVDEExpress*, click the question mark icon on the *DVDEExpress* control panel (see Figure 16) to access *DVDEExpress* Help information.

You can listen to DVD audio via your computer's built-in speakers, connected powered speakers, or headphones.

Click to display Help information



Figure 16. *DVDEExpress* Control Panel

Installing DVDEExpress

To install DVD Express, follow these steps:

1. **Insert the *DVDEExpress* CD-ROM into your laptop's CD-ROM drive or the PortaDVD drive.**
2. **Double-click the Windows My Computer icon.**
The system displays the My Computer folder.
3. **Double-click the CD-ROM icon for the drive that contains the *DVDEExpress* CD-ROM.**
(This is typically the D: drive.)
The system displays the *DVDEExpress* window.
4. **Double-click the file icon for Setup.exe.**

The system begins the installation and displays the *DVDEExpress* Welcome panel (Figure 17 on page 15).



Figure 17. Installing DVD Express (1)

5. **Exit all other programs currently running on your computer. Then, click the Next button.**

The system displays the Software Licensing Agreement (Figure 18 on page 15).

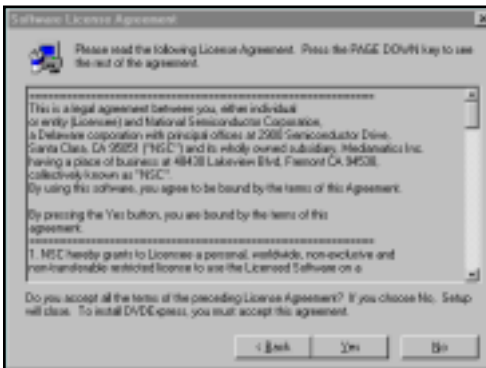


Figure 18. Installing DVD Express (2)

6. **Please read the Software Licensing Agreement. If you agree to its terms, click the Yes button. (If you do not agree, click the No button.)**

The system displays the Choose Destination Location panel (Figure 19 on page 16).



Figure 19. Installing DVD Express (3)

7. **Click the Next button to accept the default location, or click Browse and specify a location you prefer.**

The system displays installation progress panels (Figure 20), followed by a "setup complete" panel (Figure 21 on page 17).

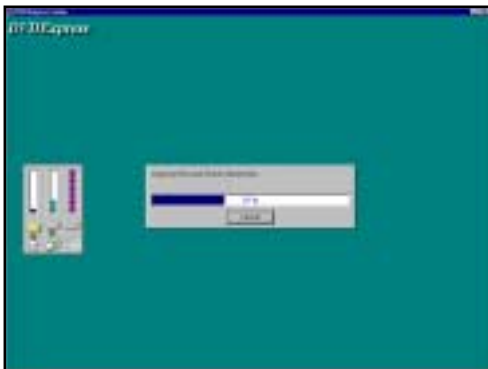


Figure 20. Installing DVD Express (4)



Figure 21. Installing DVD Express (5)

8. Click the Finish button.

The installation is complete.

Starting DVDEExpress

1. To launch DVDEExpress, select:

Start-->Programs-->Mediamatics DVDEExpress-->Mediamatics DVDPlayer.

The system displays the DVDEExpress Control Panel (Figure 16 on page 14).

2. Click the question mark icon to access DVDEExpress Help for operational information.

Handling Discs

- ❑ Handle compact discs only by their edges to avoid getting fingerprints on the surface. Do not touch the disc's data surface (non-label side).
- ❑ Do not place discs in direct sunlight, or in locations subject to high humidity, high temperatures, or dusty conditions.
- ❑ If cleaning the disc becomes necessary (erratic operation or visible dust or smudges), gently wipe the surface of the disc from the center to the outside edge. Do not use benzene, alcohol, thinner, or other solvents.

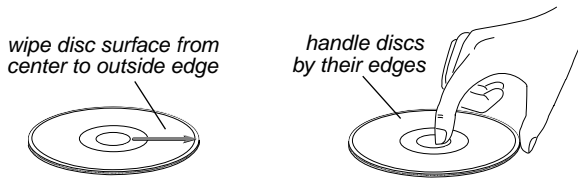


Figure 22. Handling Discs

Loading and Ejecting Discs

This section explains how to load and eject discs from the PortaDVD.

Loading a Disc

1. **Press the Open/Eject button on the front panel.**

The PortaDVD partially extends the disc tray. Grasp the front bezel and slide the tray fully open.

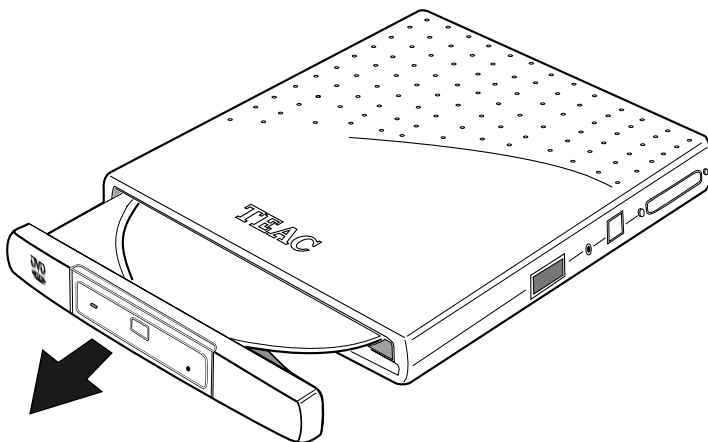


Figure 23. Extending the Disc Tray

2. **Insert a DVD, CD-ROM or audio CD into the drive. Make sure the disc label faces up.**
Press the disc gently down onto the spindle, if necessary, until it snaps securely into position.
3. **Press the Open/Eject button to retract the disc tray into the drive.**

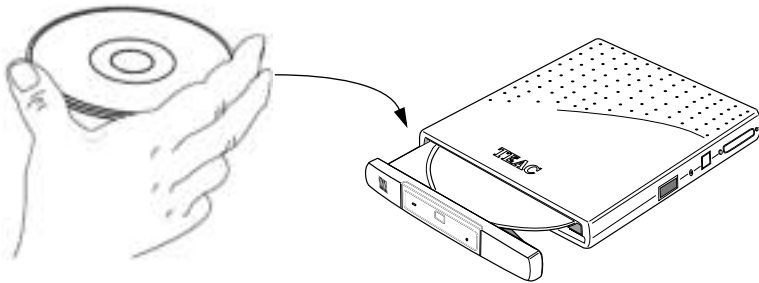


Figure 24. Inserting a Disc

Ejecting a Disc

1. **To eject a disc, first make sure the disc has stopped spinning. Then press the Open/Eject button on the front panel.**

The PortaDVD partially extends the disc tray. Grasp the front bezel and slide the tray fully open.

2. **Carefully remove the disc.**

You may need to press a finger on the spindle or chassis to stabilize the drive.

3. **Press the Open/Eject button again to retract the disc tray into the drive.**

Specifications

| | |
|----------------------|--|
| Model | DVE28E |
| Disc Type | DVD-ROM; DVD-Video; Data CD; Audio CD; CD-DA; CD-ROM (Mode-1, Mode-2); CD-ROM XA Mode-2 (Form-1, Form-2); Multi-Session PhotoCD™; Mixed Mode CD |
| Disc Diameter | 12 cm, 8 cm |
| Max. Read Speed | DVD Mode: 10,816KBps (8X DVD speed) CD Mode: 3,600KBps (24X CD speed) |
| Interface | ATAPI (drive side) PCMCIA Card Type II |
| Random Access Time | DVD Mode: 110msec CD Mode: 90 msec |
| Data Buffer Capacity | 512KB |
| Ambient Temperature | Operating: 5° to 55°C |
| Relative Humidity | Operating: 8% to 80% (non-condensing), wet bulb temperature 29.4°C |
| Vibration | Operating: 0.2G or less (5-500Hz, Sweep) Transportation: (packed): 2G or less (5-500Hz, Sweep) |
| Shock | Operating: 5G or less (half-sine wave, 11 msec) excepting CD-DA play mode Non-operating/Transportation: 60G or less (half-sine wave, 11 msec) |
| MTBF | 60,000 POH (10% duty) |
| Safety Standard | Approved by UL, FCC |

Specifications and features subject to change without notice or obligation.

Technical Support

For technical support, please contact the dealer from whom you purchased the drive or the TEAC Service and Support Center nearest you:

North America:

TEAC America, Inc. (USA)
Technical Support
Telephone: (323) 727-4860
Fax: (323) 869-8751
Monday - Friday 8:00 a.m. - 5:00 pm
<http://www.teac.com/dspd>
E-mail: dspdtsg@teac.com

Europe:

TEAC Deutschland GmbH ICP Division (Germany)
Telephone: (611) 71-580
Fax: (611) 71-5892
BBS: (611) 71-5851
<http://www.teac.de>

TEAC UK Ltd.

Telephone: 923-225235 • Fax 923-236290

TEAC France S.A.

Telephone: (1) 42-37-01-02
Fax: (1) 42-37-65-45

Japan, Asia, Middle East:

TEAC Corporation, 3-7-3 Nakacho,
Musashino-shi, Tokyo 180 Japan
Field Service and Technical Support Section
Data Storage Products Sales and Marketing Division
Telephone: (0422) 52-5048
Fax-on-Demand (24 hours): (0422) 55-2554
BBS: (0429) 62-7498
(8 bit; 1 stop bit; no parity. Downloaded files compressed by LHA.)
<http://www.teac.co.jp>

TEAC Australia PTY LTD

A.C.N 005 408 462
106 Bay Street, Port Melbourne
Victoria 3207, Australia
Telephone: (03) 9644-2442
Fax: (03) 9646-9187
<http://www.teac.com.au>

Free Manuals Download Website

<http://myh66.com>

<http://usermanuals.us>

<http://www.somanuals.com>

<http://www.4manuals.cc>

<http://www.manual-lib.com>

<http://www.404manual.com>

<http://www.luxmanual.com>

<http://aubethermostatmanual.com>

Golf course search by state

<http://golfingnear.com>

Email search by domain

<http://emailbydomain.com>

Auto manuals search

<http://auto.somanuals.com>

TV manuals search

<http://tv.somanuals.com>