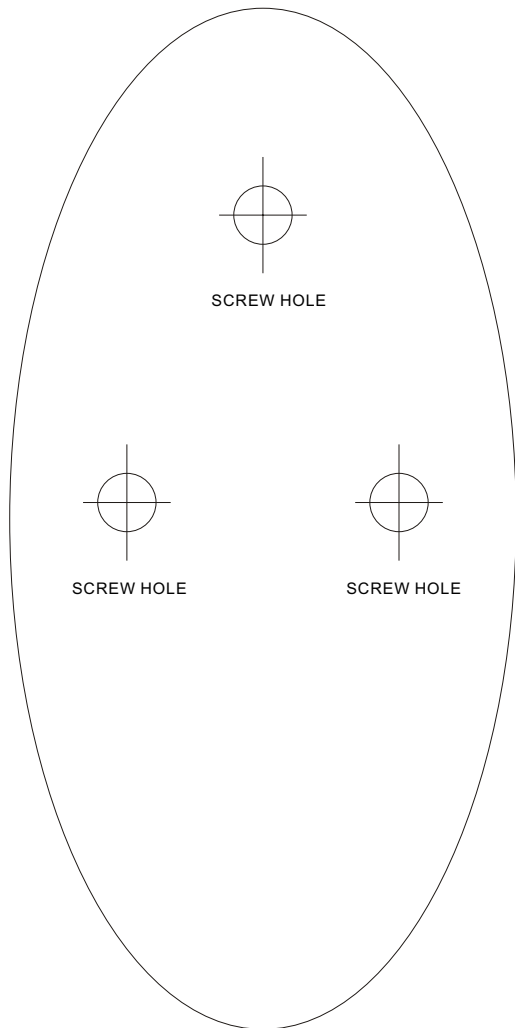


**TEMPLATE
MODE S082KA**



TESTING

ALARM OUTPUT AND "PANIC" BUTTON TEST

To test the alarm output, press the "PANIC" button located on front of the unit. (THIS UNIT IS VERY LOUD, COVER THE SIREN ON THE FRONT OF THE UNIT BEFORE ACTIVATING). The unit will immediately sound a piercing alarm siren. To disarm the unit, enter your security code followed by the "#ON/OFF" button. (If you have not entered a security code the default is "0" and S082K is "5")

CHIME TESTING

1. Set the function switch to the "CHIME" position.
2. Enter the security code followed by the "#ON/OFF" button, the "ALARM" LED will illuminate. If this does not happen repeat steps 1 and 2.
3. Close the door and then open it again, a pleasant chime will sound 3 times.
4. To disarm the unit, enter the security code followed by the "#ON/OFF" button.
5. As long as the unit is in the "ARM" mode, the chime will continue to sound until "DISARMED".

ALARM TESTING

1. Set the function switch to the "INSTANT" or "DELAY" position.
2. Enter the security code followed by the "#ON/OFF" button, the "ARM" LED will turn on. If this does not happen, repeat steps 1 and 2.
3. Close the door and open it again in "INSTANT" mode, the alarm sounds immediately. If the alarm is in "DELAY" mode, the alarm will emit a low beep tone to alert you to disarm the unit, if not disarmed, the unit will then sound a piercing alarm.
4. To disarm the unit, enter the security code followed by the "#ON/OFF" button.

Note: in both modes, CHIME or ALARM (instant / delay) the unit will continue to sound until "DISARMED". The unit will only sound the ALARM if "ARMED" in the ALARM mode. If armed in the CHIME mode the unit will sound only the CHIME. If function switch is changed after the unit has been activated, this will not alter the sound being produced.

OPERATION

ALARM MODE

1. Before arming the unit slide the function switch to the "INSTANT/DELAY" position.
2. To arm the S082X / S082K, enter the security code followed by the "#ON/OFF" button, the ARM LED will turn on. If this does not happen repeat steps 1 and 2.

3. INSTANT mode.

When an entry is detected. The alarm sounds immediately. This is used to protect you when you are at home.

4. DELAY mode.

This mode is used when you are leaving your home. On your return, an entry alert beep tone will sound to alert you to disarm the unit. If the unit is not disarmed within 10 seconds of entry, the alarm will sound a 110db (S082KA is 115db) alarm siren.

5. The 110db/115db alarm will sound for about 30/36 seconds, while the alarm is sounding or during the entry alert time the security code can be entered to disarm the unit.
6. To disarm the unit, enter the security code followed by the "#ON/OFF" button.

CHIME MODE

1. Before activating the chime, slide the function switch to the "CHIME" position.
2. Enter the security code followed by the "#ON/OFF" button.
3. The "ARM" LED will illuminate to verify the unit is ON, followed by a short beep. If the ARM light does not illuminate this indicates the unit is OFF.
4. The chime will sound if there is an entry. The chime will sound for each entry until the unit is turned OFF (disarmed)

NOTE: The position of the function switch does not necessarily indicate the mode the unit is in (CHIME / INSTANT / DELAY). Each time before activating the unit, set the function switch to the correct position for the mode desired.

PANIC ALARM

The red "PANIC" button on the front panel activates the alarm during a possible emergency.

1. Press the panic button. This will activate the 110db (S082KA is 115db) alarm siren.
2. Disarm the PANIC alarm, follow the same procedure as you would to DISARM the unit.

CAUTION

THE MAGNET GUARD IS EXTREMELY LOUD. FOR YOUR SAFETY. NEVER PLACE THE UNIT CLOSE TO YOUR EARS. TO TEST THE ALARM, DIRECT THE UNIT AWAY FROM YOU AT ARMS LENGTH AND ACTIVATE.

PATENT PENDING NOTICE
THIS PRODUCT IS PROTECTED UNDER FEDERAL PATENT, TRADEMARK AND COPYRIGHT LAWS AND LAWS PREVENTING UNFAIR COMPETITION. NO DUPLICATION OR SIMULATION OF THIS PRODUCT IS PERMITTED EXCEPT BY WRITTEN AUTHORIZATION OF TECHKO, INC. TECHKO AND THE CONFIGURATION OF THIS PRODUCT ARE TRADEMARKS OF TECHKO, INC. COPYRIGHT 1992 TECHKO, INC. ALL RIGHTS RESERVED

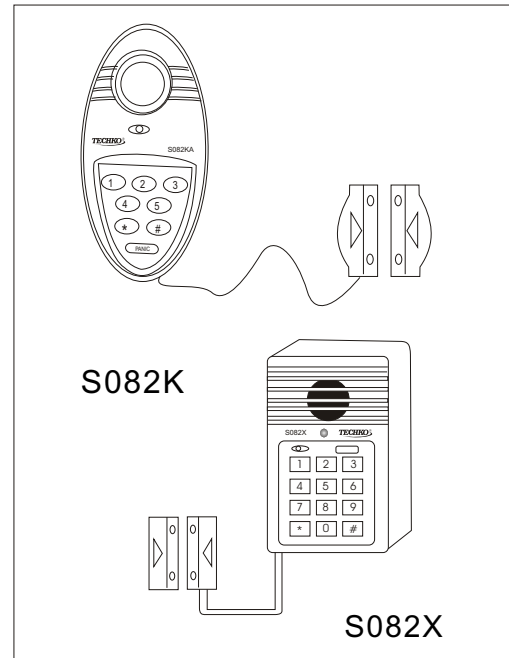
Customer Service :
1-888-8TECHKO (1-888-883-2456)
Website: www.techkomaid.com

Mfg. By **TECHKO**
9767 Research Drive
Irvine, CA 92618-4626

MADE IN CHINA
AND IN TEXAS

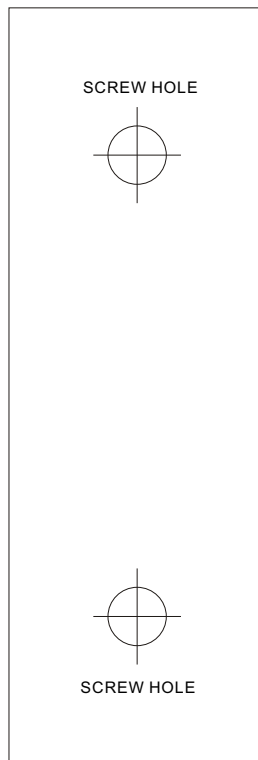


**SAFETY SECURITY
MAGNET GUARD
MODEL S082X/S082K**



OPERATION MANUAL

TEMPLATE MODE S082X



CHANGING A SECURITY CODE TO A NEW CODE

1. Enter the old security code number.
2. Press the "*" /CODE" button.
3. Enter the new code (1 to 12 digits), (S082KA is 1 to 7).
4. Press the "*" /CODE" button, the unit will "beep" once to confirm your new code has been entered.

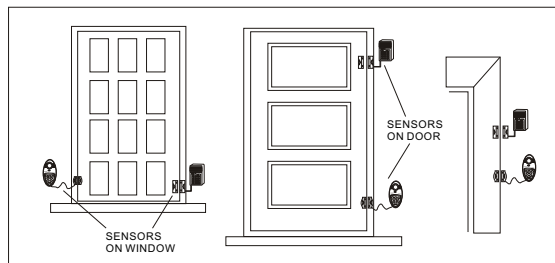


Fig.2

MOUNTING

SELECT A MOUNTING LOCATION

NOTE: Before mounting the unit be sure to read the SAFETY TIPS section at the beginning of the manual.

1. Apply double sided tape (included) to back of sensor switch pair. Mount sensor without wire to the door or window. Mount the sensors with wire to the door or window frame. (Fig.2) Be sure the magnetic sensors are mounted no further than a 1/4" from each other.
2. Using the mounting plate as template, mark the screw hole locations and drill two 1/4" holes. Tap the provided screw anchor into place. (Fig.3)
3. Secure the mounting plate to the wall with the screws provided.
4. Snap the alarm unit into place on the mounting plate.

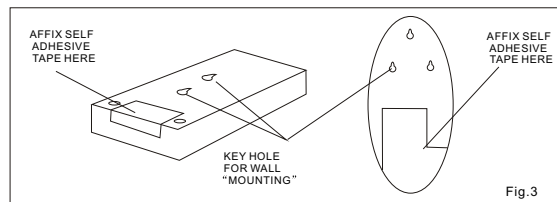


Fig.3

INSTALLATION

BATTERY INSTALLATION

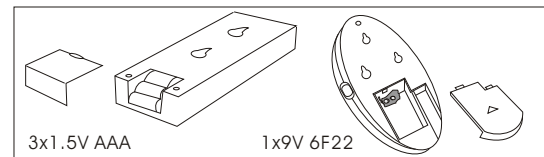
1. Remove screws from battery compartment located on the bottom of the unit. (Fig.1)
2. Install 3 AAA batteries/ 9V battery. (Not included).

NOTE: When the batteries are installed for the first time or are replaced the security code will automatically default back to "0" (S082KA factory code is "5") and the LED indicator will illuminate. This unit will also be in the ARM mode. After installing the battery to disarm the unit press "0" / "5" and the "#ON/OFF" button. A short confirming "beep" will sound and the LED light will go out to verify the unit has been disarmed.

ENTERING CODE TO ARM AND DISARM

NOTE: The default for the security code is "0" (S082KA default is "5"). When the battery is replaced the unit will reset to the factory set code "0" / "5".

1. Press the "0" / "5" button or the code that is currently in memory. (New battery default is "0" / "5"). If there is an existing code use that in place of the "0" / "5".
2. Press the "#ON/OFF" button, a confirming "beep" should be heard.
3. If the wrong security code is entered there will be two tone "beep", this is different from the single beep confirmation.
4. When the unit is armed the "ARM" LED will illuminate.



PROGRAMMING A SECURITY CODE

NOTE: The programmable security code can be a 1 to 12 digit code. (S082KA is 1 to 7 digits). Shorter codes such as 1 to 4 digits are easy to remember, long codes can provide greater safety. DO NOT INCLUDE A "0" IN YOUR CODE (S082X). DO NOT INCLUDE A "5" IN YOUR CODE (S082KA).

TO PROGRAM A SECURITY CODE AFTER BATTERY INSTALLATION

1. Press the "0" (S082KA is "5") button.
2. Press the "*" /CODE" button.
3. Enter the new code (1 to 12 digits), (S082KA is 1 to 7).
4. Press the "*" /CODE" button, the unit will beep once to confirm

INTRODUCTION

Congratulations on your purchase of the TECHKO model S082X/S082KA. The MAGNET GUARD provides detection of unwanted intruders in your home by detecting entry. This unit can be mounted on any door or window. Arming and disarming of the unit is done by entering a security code on the keypad.

FEATURES

- * Requires no wiring or special installation.
- * Built-in 110db (S082KA is 115db) alarm siren.
- * Up to 12 (S082KA 7 digits) digits programmable security codes.
- * Alarm/ chime switchable mode.
- * 5-10 seconds entry alarm delay with alert beep tone.
- * Magnetic sensor detects entry.
- * Direct access PANIC button.
- * 4.5V (3 1.5V AAA size) alkaline battery operation (S082KA uses 9V battery) (Not included).
- * Optional AC adaptor power operation for S082KA.
- * 2 warning stickers for possible points of entry.

SAFETY TIPS

1. Read all installation and operation instructions carefully before using.
2. Alarm siren is very loud, never put the unit close to your ear.
3. Avoid rough handling.
4. Do not install alarm where it will be exposed directly to sunlight or high humidity.
5. The unit can provide valuable protection for your home and property if utilized properly. However, this unit can not guarantee complete protection against burglary or robbery. Therefore, TECHKO cannot be held liable for loss or damage which could occur.
6. Keep this manual in a convenient location for future reference.

Free Manuals Download Website

<http://myh66.com>

<http://usermanuals.us>

<http://www.somanuals.com>

<http://www.4manuals.cc>

<http://www.manual-lib.com>

<http://www.404manual.com>

<http://www.luxmanual.com>

<http://aubethermostatmanual.com>

Golf course search by state

<http://golfingnear.com>

Email search by domain

<http://emailbydomain.com>

Auto manuals search

<http://auto.somanuals.com>

TV manuals search

<http://tv.somanuals.com>