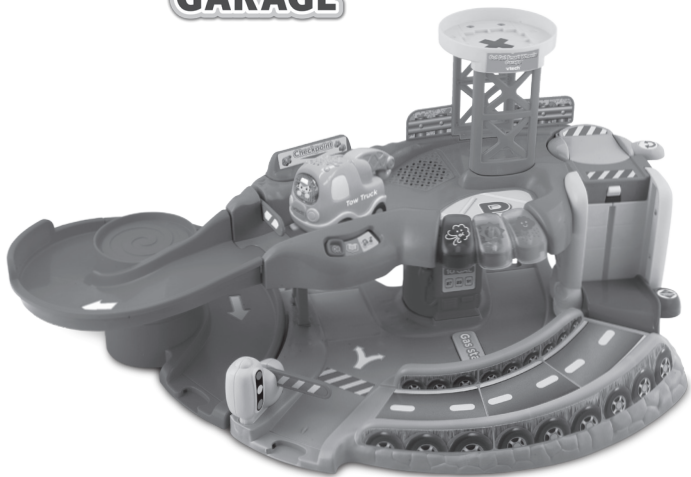


vtech®

User's Manual

GO! GO! 
SMART WHEELS
GARAGE™



Dear Parent,

*Ever notice the look on your baby's face when they learn something new through their own discovery? These self-accomplished moments are a parent's greatest reward. To help fulfill them, VTech® created the **Infant Learning**® series of toys.*

*These unique interactive learning toys directly respond to what children do naturally – play! Using innovative technology, these toys react to baby's interactions, making each play experience fun and unique as they learn age-appropriate concepts like first words, numbers, shapes, colors and music. More importantly, VTech®'s **Infant Learning**® toys develop baby's mental and physical abilities by inspiring, engaging and teaching.*

At VTech®, we know that a child has the ability to do great things. That's why all of our electronic learning products are uniquely designed to develop a child's mind and allow them to learn to the best of their ability. We thank you for trusting VTech® with the important job of helping your child learn and grow!

Sincerely,

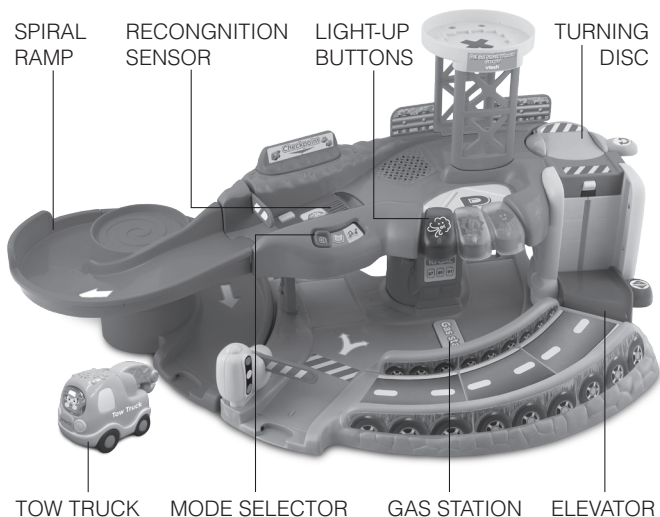
Your friends at VTech®

*To learn more about the **Infant Learning**® series and other VTech® toys, visit www.vtechkids.com*

INTRODUCTION

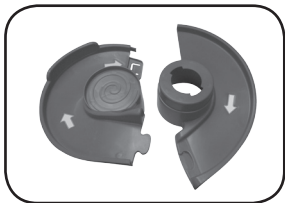
Thank you for purchasing the **VTech® Go! Go! Smart Wheels Garage™** learning toy.

Park, play, and learn with the **Go! Go! Smart Wheels Garage™** from **VTech®**. This interactive garage has a spiral ramp, gas station, traffic stop, elevator, parking pad and helicopter landing pad that provide pretend-play and learning elements. Additionally, the garage also has a special sensor that recognizes the included electronic tow truck and six other **Go! Go! Smart Wheels™** vehicles (sold separately). The three light-up keys will engage your child as he learns about colors and the weather.



TOW TRUCK MODE SELECTOR GAS STATION ELEVATOR

INCLUDED IN THIS PACKAGE



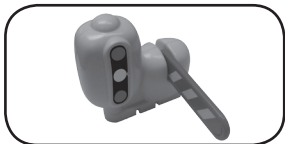
Two spiral ramp tracks



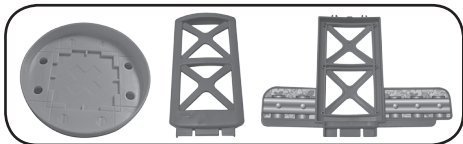
One main unit



One checkpoint sign



One traffic stop



Three helicopter pad pieces



One tow truck



One support

WARNING: All packing materials, such as tape, plastic sheets, packaging locks and tags are not part of this toy, and should be discarded for your child's safety.

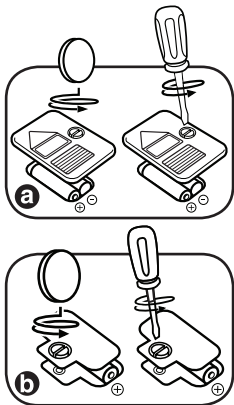
ATTENTION: Pour la sécurité de votre enfant, débarrassez-vous de tous les produits d'emballage tels que rubans adhésifs, feuilles de plastique, attaches et étiquettes. Ils ne font pas partie du jouet.

Note: Please keep this instruction manual as it contains important information.

GETTING STARTED

BATTERY INSTALLATION

1. Make sure the unit is turned **OFF**.
2. Locate the battery cover on the back of the gas station. Use a coin or a screwdriver to loosen the screw.
3. Install 2 new 'AA' (AM-3/LR6) batteries following the diagram inside the main unit battery box (a). Install 1 new 'AA' (AM-3/LR6) battery following the diagram inside the tow truck battery box (b). The use of new alkaline batteries is recommended for maximum performance.
4. Replace the battery cover and tighten the screw to secure.



BATTERY NOTICE

- The use of new alkaline batteries is recommended for maximum performance.
- Non-rechargeable batteries are not to be recharged.

- Rechargeable batteries are to be removed from the toy before being charged (if removable).
- Rechargeable batteries are only to be charged under adult supervision (if removable).
- Do not mix old and new batteries.
- Do not mix batteries of different types: alkaline, standard (carbon-zinc) or rechargeable (nickel-cadmium).
- Only batteries of the same or equivalent type as recommended are to be used.
- Batteries are to be inserted with the correct polarity.
- Exhausted batteries are to be removed from the toy.
- The supply terminals are not to be short-circuited.
- The toy is not to be connected to more than the recommended number of power supplies.
- Do not dispose of batteries in fire.

WE DO NOT RECOMMEND THE USE OF RECHARGEABLE BATTERIES.

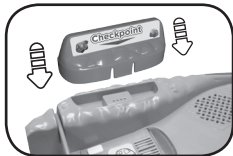
ASSEMBLY INSTRUCTIONS

With the **VTech® Go! Go! Smart Wheels Garage™** safety comes first. To ensure your child's safety, adult assembly is required.

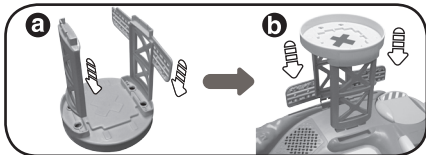
1. Insert the traffic stop into the slot on the bottom-left of the main unit.



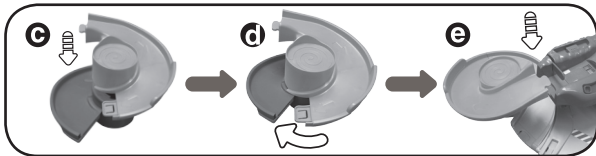
2. Insert the checkpoint sign into the slot on the top-left of the main unit.



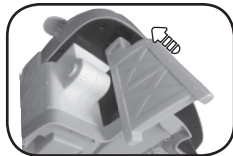
3. Insert the two sides of the helicopter pad into the corresponding slots on the helicopter pad platform (a). Then, insert the entire helicopter pad into the corresponding slots on the main unit (b).



4. Put the top spiral ramp track on top of the bottom spiral ramp track, joining the two tracks in the center (c). Then, twist the top spiral ramp track to lock it to the bottom spiral ramp track (d). Finally, attach the assembled spiral ramp to the top and bottom of the main unit (e).



5. Insert the support into the slot on the underside of the turning disc platform.



PRODUCT FEATURES

1. MODE SELECTOR

To turn the unit **ON**, slide the **MODE SELECTOR** to the Learning Mode (📖) or Music Mode position (🎵). To turn the unit **OFF**, slide the **MODE SELECTOR** to the **OFF** position (**OFF**).



2. AUTOMATIC SHUT-OFF

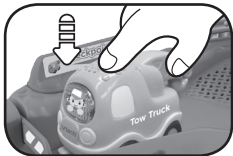
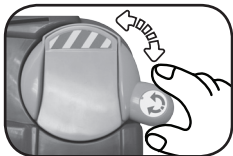
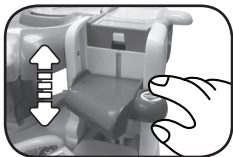
To preserve battery life, the **VTech® Go! Go! Smart Wheels Garage™** will automatically power-down after approximately 30 seconds without input. The unit can be turned on again by pressing any button.

ACTIVITIES - GARAGE

1. Slide the mode selector to turn on the unit. You will hear a sing-along song, phrase and sounds in **Learning Mode**. In **Music Mode**, you will hear a fun phrase, a sing-along song and sounds. The lights will flash with the sounds.
2. Press the three light-up buttons to learn colors and about the weather in **Learning Mode**. In **Music Mode**, hear phrases, sounds and melodies. The lights will flash with sounds.
3. Press the **gas station** button and you will hear sounds and phrases in **Learning Mode**. You'll hear sounds, phrases and melodies in **Music Mode**. The lights will flash with the sounds.

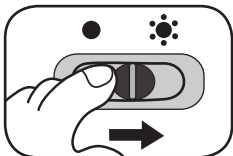


- Put a vehicle on the **elevator** platform. Move the elevator to learn opposites in **Learning Mode**. You'll hear sounds in **Music Mode**. The lights will flash with the sounds.
- Put a vehicle on the turning disc. Turn the **disc** to hear sounds, phrases and sing-along songs in **Learning Mode**. Hear sounds, phrases and melodies in **Music Mode**. The lights will flash with the sounds.
- While a vehicle is on the **recognition sensor**, press down or quickly push the vehicle through the gate to hear a greeting. The lights will flash with the sounds.

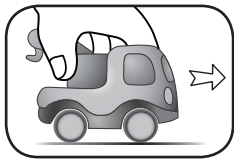


ACTIVITIES - TOW TRUCK

- Slide the **ON/OFF SWITCH** to the **ON** position to turn the unit **ON**. You will hear a song, a phrase and sounds. The light will flash with the sounds.
- Press the **LIGHT-UP DRIVER BUTTON** to hear vehicle sound effects, a song and phrases. The light will flash with the sounds.



3. Push the vehicle to hear fun sounds, a song and short tunes. While the short tune is playing, push the vehicle again to stop the short tune and play it with a faster tempo. The light will flash with sounds.



MELODY LIST:

1. The Wheels on the Bus
2. Bicycle Built for Two
3. Skip to My Lou
4. She'll Be Coming 'Round the Mountain
5. The Alphabet Song
6. Bingo

SUNG SONG LYRICS

Sung Song 1:

Roll through the garage,
Come learn and drive around.
Need some gas?
Come and fill 'er up.
Need to park?
Come and take a rest.
Need to speed?
Roll down the ramp!
Learning picks up speed!

Sung Song 2:

Welcome friends,
music is fun!
Listen to the music,
all day long!

Sung Song 3

A-B-C-D,
Obey all the traffic rules.
Look both ways!
Drive safely!
Drive happily!

CARE & MAINTENANCE

1. Keep the unit clean by wiping it with a slightly damp cloth.
2. Keep the unit out of direct sunlight and away from any direct heat source.
3. Remove the batteries when the unit will not be in use for an extended period of time.
4. Do not drop the unit on hard surfaces and do not expose the unit to moisture or water.

TROUBLESHOOTING

If for some reason the program/activity stops working or malfunctions, please follow these steps:

1. Please turn the unit **OFF**.
2. Interrupt the power supply by removing the batteries.
3. Let the unit stand for a few minutes, then replace the batteries.

4. Turn the unit **ON**. The unit should now be ready to play again.
5. If the product still does not work, replace with an entire set of new batteries.

If the problem persists, please call our Consumer Services Department at 1-800-521-2010 in the U.S. or 1-877-352-8697 in Canada, and a service representative will be happy to help you.

For information on this product's warranty, please call our Consumer Services Department at 1-800-521-2010 in the U.S. or 1-877-352-8697 in Canada.

IMPORTANT NOTE:

Creating and developing **Infant Learning** products is accompanied by a responsibility that we at **VTech®** take very seriously. We make every effort to ensure the accuracy of the information, which forms the value of our products. However, errors sometimes can occur. It is important for you to know that we stand behind our products and encourage you to call our Consumer Services Department at 1-800-521-2010 in the U.S., or 1-877-352-8697 in Canada, with any problems and/or suggestions that you might have. A service representative will be happy to help you.

NOTE :

This equipment has been tested and found to comply with the limits for a Class B digital device, pursuant to Part 15 of the FCC Rules. These limits are designed to provide reasonable protection against harmful interference in a residential installation. This equipment generates, uses and can radiate radio frequency energy and, if not installed and used in accordance with the instructions, may cause harmful interference to radio communications. However, there is no guarantee that interference will not occur in a particular installation. If

this equipment does cause harmful interference to radio or television reception, which can be determined by turning the equipment off and on, the user is encouraged to try to correct the interference by one or more of the following measures:

- Reorient or relocate the receiving antenna.
- Increase the separation between the equipment and receiver.
- Connect the equipment into an outlet on a circuit different from that to which the receiver is connected.
- Consult the dealer or an experienced radio/TV technician for help.

Caution: changes or modifications not expressly approved by the party responsible for compliance could void the user's authority to operate the equipment.



Free Manuals Download Website

<http://myh66.com>

<http://usermanuals.us>

<http://www.somanuals.com>

<http://www.4manuals.cc>

<http://www.manual-lib.com>

<http://www.404manual.com>

<http://www.luxmanual.com>

<http://aubethermostatmanual.com>

Golf course search by state

<http://golfingnear.com>

Email search by domain

<http://emailbydomain.com>

Auto manuals search

<http://auto.somanuals.com>

TV manuals search

<http://tv.somanuals.com>