

**vtech**<sup>®</sup>

**User's Manual**

# **Soothing Songs Lovey<sup>™</sup>**



© 2012 VTech

Printed in China

91-002690-005 US

Download from [Www.Somanuals.com](http://www.Somanuals.com). All Manuals Search And Download.

*Dear Parent,*

*Ever notice the look on your baby's face when they learn something new through their own discovery? These self-accomplished moments are a parent's greatest reward. To help fulfill them, VTech® created the **Infant Learning**® series of toys.*

*These unique interactive learning toys directly respond to what children do naturally – play! Using innovative technology, these toys react to baby's interactions, making each play experience fun and unique as they learn age-appropriate concepts like first words, numbers, shapes, colors and music. More importantly, VTech®'s **Infant Learning**® toys develop baby's mental and physical abilities by inspiring, engaging and teaching.*

*At VTech®, we know that a child has the ability to do great things. That's why all of our electronic learning products are uniquely designed to develop a child's mind and allow them to learn to the best of their ability. We thank you for trusting VTech® with the important job of helping your child learn and grow!*

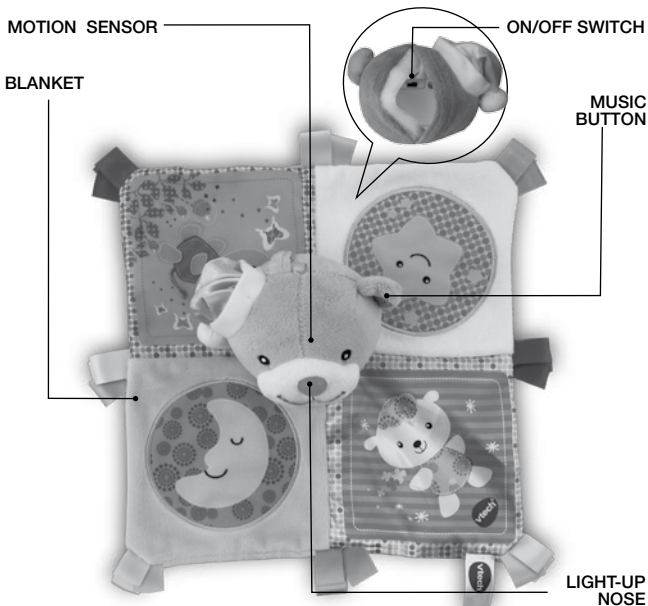
*Sincerely,*

*Your friends at VTech®*

# INTRODUCTION

Thank you for purchasing the **VTech® Soothing Songs Lovey™** learning toy.

The **VTech® Soothing Songs Lovey™** is just waiting for a cuddle! This soft and adorable bear is the perfect companion for your baby. Its colorful design, tactile ribbons and fabrics help create a safe and calming experience for little ones. With a simple squeeze of the bear's ear, your baby will hear soothing melodies and endearing phrases. For easy care, the detachable electronics allow the blanket to be



# INCLUDED IN THIS PACKAGE

- One VTech® Soothing Songs Lovey™ learning toy
- One user's manual

**WARNING:** All packing materials, such as tape, plastic sheets, packaging locks and tags are not part of this toy, and should be discarded for your child's safety.

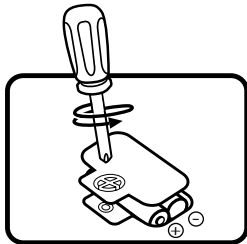
**ATTENTION :** Pour la sécurité de votre enfant, débarrassez-vous de tous les produits d'emballage tels que rubans adhésifs, feuilles de plastique, attaches et étiquettes. Ils ne font pas partie du jouet.

**NOTE:** Please keep this user's manual as it contains important information.

## GETTING STARTED

### BATTERY INSTALLATION

1. Make sure the unit is turned **OFF**.
2. Locate the battery cover inside the back of the bear's head. Use a screwdriver to loosen the screw.
3. Install 2 new 'AAA' (LR03/AM-4) batteries following the diagram inside the battery box. (The use of new alkaline batteries is recommended for maximum performance.)
4. Replace the battery cover and tighten the screw to secure.



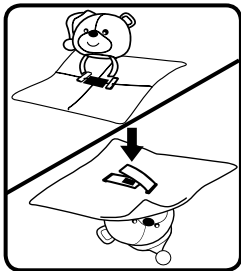
## BATTERY NOTICE

- Use new alkaline batteries for maximum performance.
- Use only batteries of the same or equivalent type as recommended.
- Do not mix different types of batteries: alkaline, standard (carbon-zinc) or rechargeable (Ni-Cd, Ni-MH), or new and used batteries.
- Do not use damaged batteries.
- Insert batteries with the correct polarity.
- Do not short-circuit the battery terminals.
- Remove exhausted batteries from the toy.
- Remove batteries during long periods of non-use.
- Do not dispose of batteries in fire.
- Do not charge non-rechargeable batteries.
- Remove rechargeable batteries from the toy before charging (if removable).
- Rechargeable batteries are only to be charged under adult supervision

## ASSEMBLY INSTRUCTIONS

Locate the two flat strips of fabric below the bear's head and thread them through the holes in the blanket. Fasten the Velcro to secure the blanket.

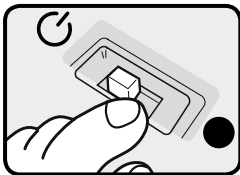
The removable blanket is machine washable, please see the tag for the washing instructions. The bear's head is surface washable only.



# PRODUCT FEATURES

## 1. ON/OFF SWITCH

The **ON/OFF SWITCH** is located inside the back of the bear's head. Slide the **ON/OFF SWITCH** to the **ON** (☰) position or the **OFF** (●) position.

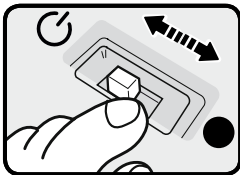


## 2. AUTOMATIC SHUT-OFF

To preserve battery life, the **VTech® Soothing Songs Lovey™** will automatically power-down after approximately 2 minutes without input. The unit can be turned on again by pressing the ear button. Please note, activating the motion sensor will not turn the unit back on.

# ACTIVITIES

1. Slide the **on/off switch** to turn the unit on. You will hear a sing-along song and a fun phrase. The light will flash with the sound.



2. Press the **music button** to hear a variety of sing-along songs, melodies, playful phrases and sounds. The light will flash with the sound.



3. Activate the motion sensor to hear a variety of melodies. The light will flash with the sound.



## MELODY LIST

1. A-Tisket, A-Tasket
2. Jack and Jill
3. Rock-a-bye Baby
4. Toyland
5. Cradle Song
6. Row, Row, Row Your Boat
7. Oh, Dear What Can the Matter Be?
8. Für Elise (Beethoven)
9. Home Sweet Home
10. Beautiful Dreamer
11. London Bridge
12. Bicycle Built For Two
13. Little Boy Blue
14. Where Has My Little Dog Gone?

15. Sleeping Beauty Waltz (Tchaikovsky)
16. Jack Be Nimble
17. Air (Bach)
18. Three Little Kittens
19. Minuet in G (Beethoven)
20. Piano Concerto A 3rd Movement
21. Au Clair de la Lune
22. Humpty Dumpty
23. Morning (Peer Gynt Suite, Grieg)
24. Prelude in A (Chopin)
25. Teddy Bear's Picnic

## **SUNG SONG LYRICS**

### **SONG 1**

Twinkle, twinkle, little star,  
How I wonder what you are.

### **SONG 2**

Boys and girls,  
Come out to play,  
The moon does shine bright as day.

### **SONG 3**

There was a farmer had a dog,  
And Bingo was his name-o!

### **SONG 4**

Mary had a little lamb,  
Its fleece was white as snow.

### **SONG 5**

Hold me close,  
I like to cuddle,  
I feel loved,

When we snuggle



# CARE & MAINTENANCE

1. Due to the electronic components, the bear's head is surface washable only.
2. The removable blanket is machine washable, please detach the blanket from the bear's head before washing.
3. Keep the unit out of direct sunlight and away from any direct heat source.
4. Remove the batteries when the unit will not be in use for an extended period of time.
5. Do not drop the unit on hard surfaces.

# TROUBLESHOOTING

If for some reason the program/activity stops working or malfunctions, please follow these steps:

1. Please turn the unit OFF.
2. Interrupt the power supply by removing the batteries.
3. Let the unit stand for a few minutes, then replace the batteries.
4. Turn the unit ON. The unit should now be ready to play again.
5. If the product still does not work, replace with an entire set of new batteries.

If the problem persists, please call our Consumer Services Department at 1-800-521-2010 in the U.S. or 1-877-352-8697 in Canada, and a service representative will be happy to help you.

For information on this product's warranty, please call **VTech®** at 1-800-521-2010 in the U.S. or 1-877-352-8697 in Canada.

**IMPORTANT NOTE:**

Creating and developing Infant Learning products is accompanied by a responsibility that we at **VTech®** take very seriously. We make every effort to ensure the accuracy of the information, which forms the value of our products. However, errors sometimes can occur. It is important for you to know that we stand behind our products and encourage you to call our Consumer Services Department at 1-800-521-2010 in the U.S. or 1-877-352-8697 in Canada, with any problems and/or suggestions that you might have. A service representative will be happy to help you.

**FCC Information:**

This equipment has been tested and found to comply with the limits for a Class B digital device, pursuant to Part 15 of the FCC Rules. These limits are designed to provide reasonable protection against harmful interference in a residential installation. This equipment generates, uses and can radiate radio frequency energy and, if not installed and used in accordance with the instructions, may cause harmful interference to radio communications. However,

there is no guarantee that interference will not occur in a particular installation. If this equipment does cause harmful interference to radio or television reception, which can be determined by turning the equipment off and on, the user is encouraged to try to correct the interference by one or more of the following measures:

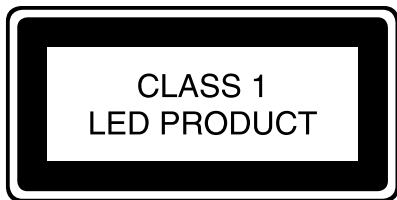
- Reorient or relocate the receiving antenna.
- Increase the separation between the equipment and receiver.
- Connect the equipment into an outlet on a circuit different from that to which the receiver is connected.
- Consult the dealer or an experienced radio/TV technician for help.

THIS DEVICE COMPLIES WITH PART 15 OF THE FCC RULES. OPERATION IS SUBJECT TO THE FOLLOWING TWO CONDITIONS: (1) THIS DEVICE MAY NOT CAUSE HARMFUL INTERFERENCE, AND (2) THIS DEVICE MUST ACCEPT ANY INTERFERENCE RECEIVED, INCLUDING INTERFERENCE THAT MAY CAUSE UNDESIRE OPERATION.

THIS CLASS B DIGITAL APPARATUS COMPLIES WITH CANADIAN ICES-003.

CET APPAREIL NUMÉRIQUE DE LA CLASSE B EST CONFORME À LA NORME NMB-003 DU CANADA.

Caution : Changes or modifications not expressly approved by the party responsible for compliance could void the user's authority to operate the equipment.



## Free Manuals Download Website

<http://myh66.com>

<http://usermanuals.us>

<http://www.somanuals.com>

<http://www.4manuals.cc>

<http://www.manual-lib.com>

<http://www.404manual.com>

<http://www.luxmanual.com>

<http://aubethermostatmanual.com>

Golf course search by state

<http://golfingnear.com>

Email search by domain

<http://emailbydomain.com>

Auto manuals search

<http://auto.somanuals.com>

TV manuals search

<http://tv.somanuals.com>