

Disney

User's Manual

Sort 'n Sing Piano



Visit the Disney Web site at www.disney.com

©Disney

Based on the "Winnie the Pooh" works by A.A.

Milne and E.H. Shepard

All Rights Reserved.

vtech[®]

Download from www.pdmanuals.com. All Manuals Search And Download.



Dear Parent,

*At VTech® we know that a child's imagination is a truly wonderful thing and needs to be developed and nurtured. That's why we created the **Winnie the Pooh electronic learning series™** of interactive learning toys to stimulate children's imaginations, while also teaching vital preschool concepts such as the alphabet, numbers, shapes, colors and objects.*

*Through the use of unique technology and engaging child-directed role-play scenarios, **Winnie the Pooh** characters magically come to life to guide children through learning activities. These engaging characters foster children's critical reasoning skills, enhance their fine motor skills and engage them in exciting role-play activities for endless hours of learning fun.*

At VTech® we know that a child has the ability to do great things. That's why all of our electronic learning products are uniquely designed to develop a child's mind and allow them to learn to the best of their ability. We thank you for trusting VTech® with the important job of helping your child learn and grow!

Sincerely,

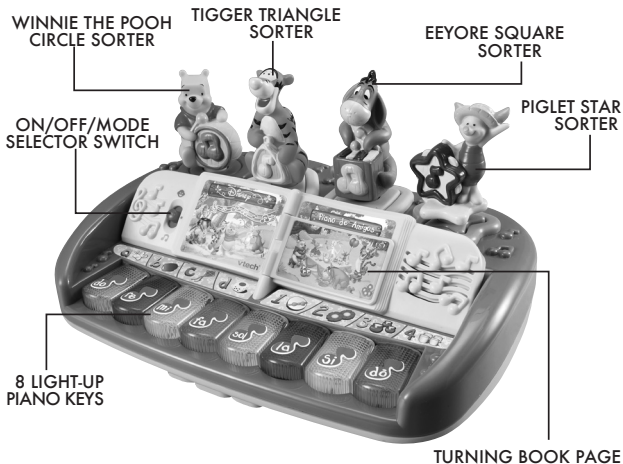
Your Friends at VTech®

*To learn more about **Winnie the Pooh electronic learning series™**
and other VTech® toys, visit
www.vtechkids.com*

INTRODUCTION

Thank you for purchasing the **VTech® Sort 'n Sing Piano!**

The **Sort 'n Sing Piano** is a musical shape sorter that's full of fun! Join Winnie the Pooh and his friends to explore the different instruments and join in the concert! With 8 light-up buttons and 4 chunky shape sorters, your little one will love to learn colors, shapes, letters, numbers and objects. Learning and music modes with an extra 2 modes of play when you flip the book page ensure that the learning and fun never end!



INCLUDED IN THIS PACKAGE

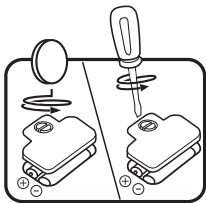
- One VTech® Sort 'n Sing Piano
- Four 3D Character Shape Sorters
- One User's Manual

WARNING: All packing materials, such as tape, plastic sheets, wire ties and tags are not part of this toy, and should be discarded for your child's safety.

GETTING STARTED

BATTERY INSTALLATION

1. Make sure the unit is turned **OFF**.
2. Locate the battery cover on the bottom of the unit. Use a coin or screwdriver to loosen the screw.
3. Install 2 new 'AA' batteries following the diagram inside the battery box.
4. Replace the battery cover and tighten the screw to secure.



BATTERY NOTICE

- Non-rechargeable batteries are not to be recharged.
- Rechargeable batteries are to be removed from the toy before being charged (if removable).

- Rechargeable batteries are only to be charged under adult supervision (if removable).
- Different types of batteries or new and used batteries are not to be mixed.
- Only batteries of the same or equivalent type as recommended are to be used.
- Batteries are to be inserted with the correct polarity.
- Exhausted batteries are to be removed from the toy.
- The supply terminals are not to be short-circuited.
- The toy is not to be connected to more than the recommended number of power supplies.
- Do not dispose of batteries in fire.
- The use of new alkaline batteries is recommended for maximum performance.

WE DO NOT RECOMMEND THE USE OF RECHARGEABLE BATTERIES

PRODUCT FEATURES

1. ON/OFF/MODE SELECTOR SWITCH

To turn the unit **ON**, slide the **ON/OFF/MODE SELECTOR SWITCH** to the **LEARNING MODE** (🧐) or the **MUSIC MODE** (🎵) position.



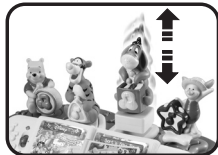
2. BOOK PAGE - 2 EXTRA MODES

Turn the **BOOK PAGE** to change the mode of play in **Music Mode** and **Learning Mode**. You will hear different responses and questions depending on which way the page is turned.



3. 3D CHARACTER SHAPE SORTERS

Insert or take out the **3D CHARACTER SHAPE SORTERS** to hear fun phrases or sounds related to the mode of play.



4. AUTOMATIC SHUT-OFF

To preserve battery life, the **VTech® Sort 'n Sing Piano** will automatically power-down after approximately 45 seconds without input. The unit can be turned on again by pressing any piano key, inserting or taking out any character sorter or turning the book page.

ACTIVITIES

LEARNING MODE - MODE 1

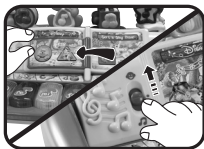
1. Turn the book page to Mode 1 (showing Pooh and friends having a picnic). Slide the **ON/OFF/MODE SELECTOR SWITCH** to the Learning Mode position (😊). You will hear Pooh sing a song about colors and giggle. The piano keys will flash with the sounds.
2. Press the **LIGHT-UP PIANO KEYS** to hear music notes. The corresponding piano key will light up.
3. Insert or take out the **3D CHARACTER SHAPE SORTERS** to hear the character identified and fun phrases. Learn about colors as Pooh identifies a color related to each character. The piano keys will flash with the sounds.
4. If there is no input after approximately 5 seconds, you will hear a question. If you answer the question correctly you will hear a positive response. You have two chances to answer correctly before returning to normal play mode. After a further 10 seconds



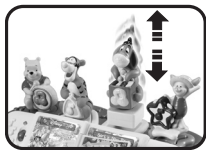
with no input, you will hear Pooh sing a song about numbers, shapes and letters. After another 15 seconds, if there is still no input, you will hear Pooh sing a song about colors. If there continues to be no input, you will hear "Good-bye!" and then the unit will automatically power-down.

LEARNING MODE - MODE 2

1. Turn the book page to Mode 2 (showing Pooh and friends inside their shapes). Slide the **ON/OFF/MODE SELECTOR SWITCH** to the Learning Mode position (😊). You will hear Pooh sing a song about numbers, shapes and letters and giggle. The piano keys will flash with the sounds.
2. Press the **LIGHT-UP PIANO KEYS** to hear the corresponding letters and numbers identified. Press the letters again to hear the letter and related object. Press the numbers again to hear the number of objects and counting. The corresponding piano key will light up.



3. Insert or take out the **3D CHARACTER SHAPE SORTERS** to hear the shape and the instrument belonging to the character identified and the sound of that instrument. The piano keys will flash with the sounds.
4. If there is no input after approximately 5 seconds, you will hear a question. If you answer the question correctly you will hear a positive response. You have two chances to answer correctly before returning to normal play mode. After a further 10 seconds with no input, you will hear Pooh sing a song about colors. After another 15 seconds, if there is still no input, you will hear Pooh sing a song about numbers, shapes and colors. If there continues to be no input, you will hear "Good-bye!" and then the unit will automatically power-down.



MUSIC MODE - MODE 1

1. Turn the book page to Mode 1 (showing Pooh and friends having a picnic). Slide the **ON/OFF/MODE SELECTOR SWITCH** to the Music Mode position (🎵). You will hear Pooh say, "Shall we play some music?" followed by a short tune. The piano keys will flash with the sounds.



2. Press the **LIGHT-UP PIANO KEYS** to hear melodies played one note at a time. Keep pressing to finish the song! The corresponding piano key will light up.



3. Insert or take out the **3D CHARACTER SHAPE SORTERS** to hear fun phrases about the characters and their instruments, the instrument sound and a short tune played with that instrument. The piano keys will flash with the sounds.



4. If there is no input after approximately 5 seconds, you will go into the exciting "follow the lights" game. Press the lights as fast as you can to play a cheerful short tune! Press each light as it flashes and keep going until you finish the tune. Watch carefully! If you press the incorrect piano key, the next light will flash. You have three chances to answer correctly before returning to normal play mode. Inserting or taking out the **3D CHARACTER SHAPE SORTERS** will interrupt the game and cause the unit to return to normal play mode. After a further 10 seconds with no input, you will hear Pooh sing a song about colors. After another 15 seconds, if there is still no input, you will hear Pooh sing a song about

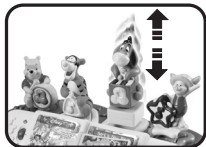
numbers, shapes and letters. If there continues to be no input, you will hear "Good-bye!" and then the unit will automatically power-down.

MUSIC MODE - MODE 2

1. Turn the book page to Mode 2 (showing Pooh and friends inside their shapes). Slide the **ON/OFF/MODE SELECTOR SWITCH** to the Music Mode position (🎵). You will hear Pooh say, "Would you like to hear our band?" followed by a short tune. The piano keys will flash with the sounds.
2. Press the **LIGHT-UP PIANO KEYS** to hear cheerful melodies. While a melody is playing, insert the **3D CHARACTER SHAPE SORTERS** to add the corresponding instrument sound to the melody. Take out the **3D CHARACTER SHAPE SORTERS** to remove the corresponding instrument sound from the melody. The piano keys will flash with the sounds.



3. Insert or take out the **3D CHARACTER SHAPE SORTERS** to hear the corresponding instrument sound and a short tune played with that instrument. The piano keys will flash with the sounds.



4. If there is no input after approximately 5 seconds, you will go into the exciting “follow the lights” game. Press the lights as fast as you can to play a cheerful short tune! Press each light as it flashes and keep going until you finish the tune. Watch carefully! If you press the incorrect piano key, the next light will flash. You have three chances to answer correctly before returning to normal play mode. Inserting or taking out the **3D CHARACTER SHAPE SORTERS** will interrupt the game and cause the unit to return to normal play mode. After a further 10 seconds with no input, you will hear Pooh sing a song about numbers, shapes and letters. After another 15 seconds, if there is still no input, you will hear Pooh sing a song about colors. If there continues to be no input, you will hear “Good-bye!” and then the unit will automatically power-down.

MELODY LIST

1. Twinkle, Twinkle, Little Star
2. Bingo
3. Hey Diddle Diddle
4. Ring Around the Rosy
5. The Entertainer
6. The Farmer in the Dell
7. The Wheels on the Bus
8. Hickory Dickory Dock

CARE AND MAINTENANCE

1. Keep the unit clean by wiping it with a slightly damp cloth.
2. Keep the unit out of direct sunlight and away from any direct heat source.
3. Remove the batteries when the unit is not in use for an extended period of time.
4. Do not drop the unit on hard surfaces and do not expose the unit to moisture or water.

TROUBLESHOOTING

If for some reason the program/activity stops working or malfunctions, please follow these steps:

1. Please turn the unit **OFF**.
2. Interrupt the power supply by removing the batteries.
3. Let the unit stand for a few minutes, then replace the batteries.
4. Turn the unit **ON**. The unit should now be ready to play again.
5. If the product still does not work, replace with a new set of batteries.

If the problem persists, please call our Consumer Services Department at 1-800-521-2010 in the U.S. or 1-877-352-8697 in Canada, and a service representative will be happy to help you.

IMPORTANT NOTE:

Creating and developing **electronic learning Winnie the Pooh** products is accompanied by a responsibility that we at **VTech**[®] take very seriously. We make every effort to ensure the accuracy of the information, which forms the value of our products. However, errors sometimes can occur. It is important for you to know that we stand behind our products and encourage you to call our Consumer Services Department at 1-800-521-2010 in the U.S. or 1-877-352-8697 in Canada with any problems and/or suggestions that you might have. A service representative will be happy to help you.

Note:

This equipment has been tested and found to comply with the limits for a Class B digital device, pursuant to Part 15 of the FCC Rules. These limits are designed to provide reasonable protection against harmful interference in a residential installation. This equipment generates, uses and can radiate radio frequency energy and, if not installed and used in accordance with the instructions, may cause harmful interference to radio communications. However, there is no guarantee that interference will not occur in a particular installation. If this equipment does cause harmful interference to radio or television reception, which can be determined by turning the equipment off and on, the user is encouraged to try to correct the interference by one or more of the following measures:

- Reorient or relocate the receiving antenna
- Increase the separation between the equipment and receiver
- Connect the equipment into an outlet on a circuit different from that to which the receiver is connected
- Consult the dealer or an experienced radio/TV technician for help

Caution: changes or modifications not expressly approved by the party responsible for compliance could void the user's authority to operate the equipment.

91-02180-004-000 (美)

Free Manuals Download Website

<http://myh66.com>

<http://usermanuals.us>

<http://www.somanuals.com>

<http://www.4manuals.cc>

<http://www.manual-lib.com>

<http://www.404manual.com>

<http://www.luxmanual.com>

<http://aubethermostatmanual.com>

Golf course search by state

<http://golfingnear.com>

Email search by domain

<http://emailbydomain.com>

Auto manuals search

<http://auto.somanuals.com>

TV manuals search

<http://tv.somanuals.com>