

vtech®

# User's Manual



nickelodeon  
TEENAGE MUTANT NINJA  
**TURTLES**  
TURTLE POWER!

THE LEARNING TABLET

# InnoTAB®

*Dear Parent,*

*At VTech®, we know how much you enjoy staying on top of the hottest trends and having the most high-tech gadgets around. We also know that your kids feel the same way. With that in mind, we developed InnoTab®, our first multi-function tablet just for kids that brings all the magic of Mom's and Dad's tablets into a fun-filled learning experience that fits their active lifestyles.*

*InnoTab® is the next generation of learning toys for children that has a rich library of cartridge software with interactive animated e-books, learning games, creative activities along with a wide variety of additional apps. It features a 5" brilliant color LCD touch screen, a tilt-sensor for game control, as well as a USB port for downloads, SD card slot for memory expansion and a headphone jack, all housed in a sleek, durable and compact design for easy portability.*

*When playing with InnoTab®, kids can look, listen, touch, and tilt their way through activities to discover a world of fun whenever they want and wherever they go. Through interactive play, your child will develop skills in reading, math, social studies, science, music, creativity, and more—which we know is important to you.*

*At VTech®, we are dedicated to helping your children uncover their talents. We thank you for your trust in our products that encourage active minds through imaginative play.*

*Sincerely,*

*Your friends at VTech®*

# INTRODUCTION

Somewhere in the city, Shredder has hatched an evil plan. But the Teenage Mutant Ninja Turtles have emerged from their hidden lair in the sewers to bring him to justice. Help the Turtles practice their Ninja skills and play fun learning games to find and stop Shredder. Read about the Turtles' adventures in the e-book, "Mousers Attack!" You can also take epic photos with the Turtles and their friends in Camera Creativity. Turtle Power!

## INCLUDED IN THIS PACKAGE

1 InnoTab® cartridge – Nickelodeon Teenage Mutant Ninja Turtles

1 InnoTab® cartridge user's manual

**WARNING:** All packing materials, such as tape, plastic sheets, packaging locks and tags are not part of this toy, and should be discarded for your child's safety.

**ATTENTION** Pour la sécurité de votre enfant, débarrassez-vous de tous les produits d'emballage tels que rubans adhésifs, feuilles de plastique, attaches et étiquettes. Ils ne font pas partie du jouet.

**Note:** Please keep the user's manual as it contains important information.

## GETTING STARTED

### STEP 1: Insert the InnoTab® Cartridge

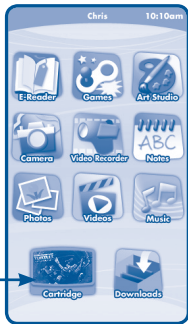
Make sure the unit is turned off. Insert the InnoTab® cartridge firmly down into the cartridge slot located on the back of the unit and push until it clicks into place as shown in the below image.



## STEP 2: Select the Cartridge Icon

Touch the cartridge icon on the **InnoTab®** desktop.

**Note:** Your **InnoTab®** desktop may look slightly different from the image at right, depending on which version of **InnoTab®** you own.



## STEP 3: Choose How You Want to Play

There are four selections of play. Touch an icon to choose.

**Adventure:** Help the Teenage Mutant Ninja Turtles find Shredder and stop his evil plan.

**Training:** Provides a short-cut to the games so you can directly practice the gameplay.

**E-Book:** Read or listen to the interactive e-book, "Mousers Attack!"

**Turtles' Creation:** Create cool tech devices and take epic pictures with the Ninja Turtles' frames and stickers.\*

**Item vault:** Unlock awesome gadgets to build even cooler tech devices.

\*If your version of **InnoTab®** has a built-in camera, a camera activity will appear in the Turtles' Creation menu.

If your version of **InnoTab®** does not have a built-in camera, this activity will not be available.



# THE HARD KEYS



## HOME

Exit the current activity and return to the **InnoTab®** desktop.



## HELP BUTTON

Replay instructions, or ask for a hint.

# SETTINGS

## Music On/Off

To turn the background music on or off, touch the **Music On/Off** icon on the cartridge menu.



Music On/Off icon

## Levels

There are two levels for every game; a level selection menu will appear when the player touches any game icon. Touch Easy or Difficult to choose.



# ACTIVITIES

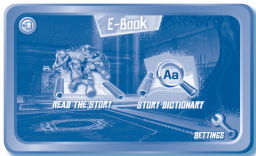
## E-Book

### Menu Page

After touching the e-book icon, you will see a menu page.

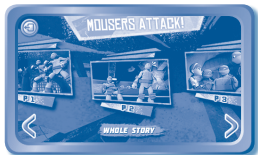
Touch:

- “Read the Story” icon to go to the index page of the e-book.
- “Story Dictionary” icon to view the vocabulary of the story.
- “Settings” icon to customize your e-book settings such as switching the e-book’s vocabulary word highlights on or off and turning the background music on or off.



### Index Page

After touching the “Read the Story” icon, you will see an index page. You can start the story from the beginning or choose any page to start reading. You can also touch the “Whole Story” icon to read the complete story from the beginning.





## Story Page

In each story page, touch anywhere on the screen to stop the story narration and enter **Free Play**. When the story narration has finished, you will enter **Free Play** mode automatically.

In **Free Play**, you can touch the words one by one to read the story at your own pace, touch highlighted vocabulary words to hear their definitions, or touch images in the art to see animations and hear fun voices and sounds. If you don't touch the screen for a while, the story narration will continue automatically to the next page.

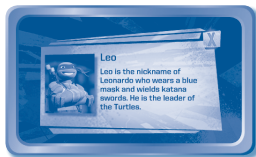
Click the screen left or right to play the previous or next page.

To listen to the story narration again, touch the **Replay** icon  on the screen. To go back to the index page, touch the **Index** icon  on the screen.



## Story Dictionary

After touching the "Story Dictionary" icon, you will see a selection page. You can touch on the vocabulary words to read and hear their definition.



## Adventure

Help the Ninja Turtles find Shredder and thwart his evil plan in Adventure Mode. Select New Game to start a New Adventure, or touch continue game to continue your adventure.



## Zone

There is a zone map to show which part of the adventure the Turtles are on.

In each Zone, the Turtles will start to uncover Shredder's plan, and where he might be hiding.

## Sewer Tunnel

The Ninja Turtles can access different parts of the game by traveling through the sewer tunnels and finding keys to unlock doors. The sewers are also filled with collectibles that the Turtles can grab to unlock items in the Items Vault.

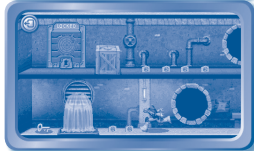
Occasionally, the way forward will be blocked. Solve the equations to remove the obstruction and continue on your way.

**Curriculum:** Math

## Turtle Kendo

The Turtles need to train their reaction time (hand-eye coordination). Help the Turtles slice the correct targets to complete the game. Use your finger to slice through the correct object.

**Curriculum:** Beginning Geometry & Spatial Sense





## Manikin Fighter

This activity trains the Turtles' power as well as their brains. Touch the correct number target when the target beats to its largest size.

**Curriculum:** Math



## Puzzle Board

Splinter gives the Turtles a puzzle to solve that will help them discover the next step. Help the Turtles complete the puzzle by selecting two squares at a time to swap places.

**Curriculum:** Problem Solving



## Turtle Skateboard



Mikey uses his skateboard to chase Shredder. Help Mikey control the skateboard to find Shredder.

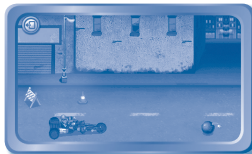
Tilt the InnoTab up and down to move and back to jump.



## Turtle Biking



Raph is riding the Turtle stealth bike to chase Shredder and stop him. Help Raph avoid the obstacles as he tries to chase Shredder through the city. Tilt the InnoTab up, down, left, and right to control the bike.



## Investigator



The Turtles are trying to track Shredder and are using a high-tech device to find clues in the environment. Help the Turtles examine the objects to discover clues. Tilt the InnoTab to find an object. Touch the object to scan.

**Curriculum:** Vocabulary

## Radar Tracing

The Turtles are using a device to track Shredder. Help the Turtles to search and lock on to Shredder's location. And then create the best path to find Shredder. Use your finger to select the coordinates and to drag the directional buttons to the desired locations.

**Curriculum:** Social Studies

## Reflection Machine

The Turtles need to deactivate the dangerous device. Help the Turtles deactivate the dangerous device by shining a laser on the mirrors. Tap on the mirrors to rotate them. Touch the laser power button to shoot the laser.

**Curriculum:** Physical Science

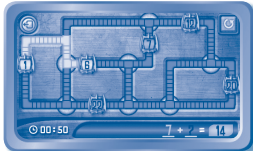
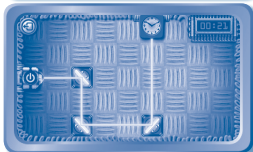
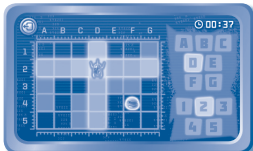
## Circuit Breaker

The Turtles are trying to disable Shredder's destruction machine. Help the Turtles complete the circuit and break the machine. Tap the jumpers to rotate their direction. Then drag your fingers from one number to the next number to solve the math equation.

**Curriculum:** Math

## Training

In this activity, you can access 6 training games. You can play these games to practice the skills you'll need in adventure mode.



## Turtles' Creation

### Donnie's Idea

Donnie is trying to create some high-tech items to fulfill his brother's requests. Help Donnie create a high-tech item to show your creativity. Then name your device to see some cool effects.

**Curriculum:** Creativity



### Camera Creativity

In this activity, you can take photos with different Ninja Turtle characters, frames and stickers. Epic!



**Note:** If your version of InnoTab® has a built-in camera, a camera activity will appear in the Turtles' Creation menu. If your version of InnoTab® does not have a built-in camera, this activity will not be available.

## Item Vault

The item vault is where bonus items are stored. You can unlock these items by meeting certain requirements in the game. Use the unlocked items in Donnie's Idea to make even cooler devices.



## ONLINE FEATURES

Register online to keep track of your child's learning journey with personalized recommendations. You can also connect to our **Learning Lodge™** to download great apps, games, e-books and more!

If you have not already installed the InnoTab® version of the **Learning Lodge™** software on your computer, go to [www.vtechkids.com/download](http://www.vtechkids.com/download) to download and install it.

# CARE & MAINTENANCE

1. Keep the **InnoTab®** cartridge clean by wiping it with a slightly damp cloth. Never use solvents or abrasives.
2. Keep it out of direct sunlight and away from direct sources of heat.
3. Avoid dropping it. **NEVER** try to dismantle it.
4. Always keep the **InnoTab®** cartridge away from water.

## WARNING

A very small percentage of the public, due to an existing condition, may experience epileptic seizures or momentary loss of consciousness when viewing certain types of flashing colors or patterns. While **InnoTab® The Learning App Tablet** does not contribute to any additional risks, we do recommend that parents supervise their children while they play video games. If your child experiences dizziness, altered vision, disorientation, or convulsions, discontinue use immediately and consult your physician. Please note that focusing on an LCD screen at close range and handling touch screen or g.sensor controls for a prolonged period of time may cause fatigue or discomfort. We recommend that children take a 15-minute break for every hour of play.

## TROUBLESHOOTING

Please note that if you try to insert or remove an **InnoTab®** cartridge without first turning the unit **OFF**, you may experience a malfunction. If this happens, and the unit does not respond to pressing the **ON/OFF** button, disconnect the AC adaptor from the main unit or remove the batteries. Then, reconnect the adaptor, or reinstall the batteries.

## TECHNICAL SUPPORT

If you have a problem that cannot be solved by using this manual, we encourage you to visit us online or contact our Consumer Services Department with any problems and/or suggestions that you might have. A support representative will be happy to assist you.

Before requesting support, please be ready to provide or include the information below:

- The name of your product or model number (the model number is typically located on the back or bottom of your product).
- The actual problem you are experiencing.
- The actions you took right before the problem started.

Internet: [www.vtechkids.com](http://www.vtechkids.com)

Phone: 1-800-521-2010 in the U.S. or 1-877-352-8697 in Canada

Download from [www.Somanuals.com](http://www.Somanuals.com). All Manuals Search And Download.

# COPYRIGHT NOTICES

© 2013 VTech. All Rights Reserved. **VTech**® and the **VTech**® logo are registered trademarks of VTech. **InnoTab**® is a registered trademark of VTech. **Learning Lodge**™ is a trademark of VTech. All other trademarks are a property of their respective owners.

## IMPORTANT NOTE:

Creating and developing **InnoTab**® **The Learning App Tablet** products is accompanied by a responsibility that we at **VTech**® take very seriously. We make every effort to ensure the accuracy of the information that forms the value of our products. However, errors sometimes can occur. It is important for you to know that we stand behind our products and encourage you to call our Consumer Services Department at 1-800-521-2010 in the U.S. or 1-877-352-8697 in Canada, with any problems and/or suggestions that you might have. A service representative will be happy to help you.

## OTHER INFO

### DISCLAIMER AND LIMITATION OF LIABILITY

**VTech**® Electronics North America, L.L.C. and its suppliers assume no responsibility for any damage or loss resulting from the use of this handbook. **VTech**® Electronics North America, L.L.C. and its suppliers assume no responsibility for any loss or claims by third parties that may arise through the use of this software. **VTech**® Electronics North America, L.L.C. and its suppliers assume no responsibility for any damage or loss caused by deletion of data as a result of malfunction, dead battery, or repairs. Be sure to make backup copies of important data on other media to protect against data loss.

COMPANY : **VTech**® Electronics North America, L.L.C.

ADDRESS : 1156 W. Shure Drive, Suite 200, Arlington Heights, IL 60004 USA

TEL NO.: 1-800-521-2010 in the U.S. or 1-877-352-8697 in Canada

## NOTE:

THIS DEVICE COMPLIES WITH PART 15 OF THE FCC RULES. OPERATION IS SUBJECT TO THE FOLLOWING TWO CONDITIONS: (1) THIS DEVICE MAY NOT CAUSE HARMFUL INTERFERENCE, AND (2) THIS DEVICE MUST ACCEPT ANY INTERFERENCE RECEIVED, INCLUDING INTERFERENCE THAT MAY CAUSE UNDESIRE OPERATION.

This equipment has been tested and found to comply with the limits for a Class B digital device, pursuant to Part 15 of the FCC Rules. These limits are designed to provide reasonable protection against harmful interference in a residential installation. This equipment generates, uses and can radiate radio frequency energy and, if not installed and used in accordance with the instructions, may cause harmful interference to radio communications. However, there is no guarantee that interference will not occur in a particular installation. If this equipment does cause harmful interference to radio or television reception, which can be determined by turning the equipment off and on, the user is encouraged to try to correct the interference by one or more of the following measures:

- Reorient or relocate the receiving antenna.
- Increase the separation between the equipment and receiver.
- Connect the equipment into an outlet on a circuit different from that to which the receiver is connected.
- Consult the dealer or an experienced radio/TV technician for help.

CAN ICES-3 (B)/NMB-3(B)

Caution: Changes or modifications not expressly approved by the party responsible for compliance could void the user's authority to operate the equipment.

## Free Manuals Download Website

<http://myh66.com>

<http://usermanuals.us>

<http://www.somanuals.com>

<http://www.4manuals.cc>

<http://www.manual-lib.com>

<http://www.404manual.com>

<http://www.luxmanual.com>

<http://aubethermostatmanual.com>

Golf course search by state

<http://golfingnear.com>

Email search by domain

<http://emailbydomain.com>

Auto manuals search

<http://auto.somanuals.com>

TV manuals search

<http://tv.somanuals.com>