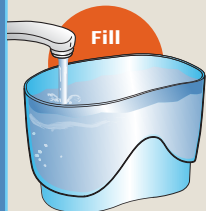
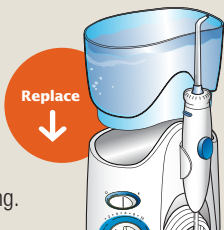


**1 Prepare the Reservoir:**

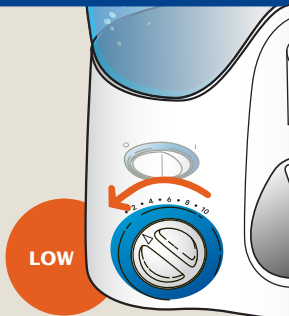
Remove the reservoir from base and fill with lukewarm water.

Replace the reservoir onto the base, **pressing down firmly** to ensure full seating.

**3 Adjust Water Pressure:**

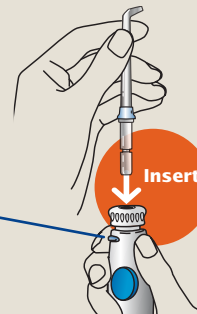
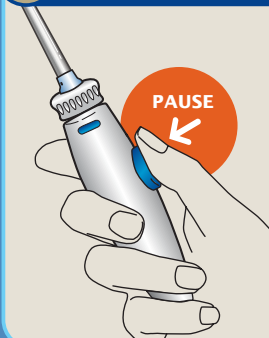
For first time use, adjust the pressure dial on the base to **lowest position**.

Gradually increase pressure as you prefer.

**2 Insert Tip:**

Select the appropriate tip and insert into the handle. Press firmly until the tip clicks into place.

**Caution:** Do not press tip eject button while unit is running.

**4 Pause Button Control:**

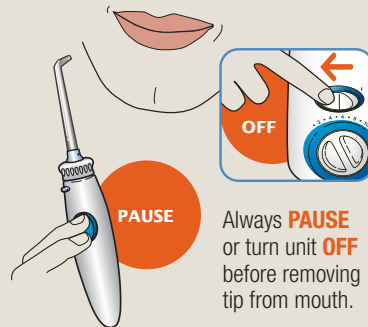
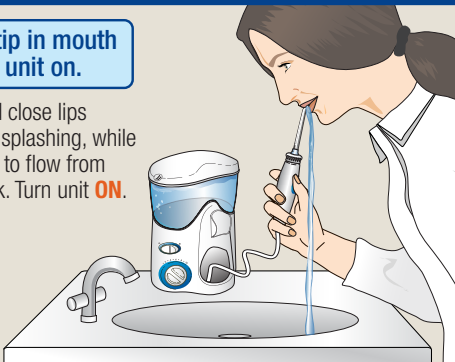
You can temporarily stop water flow by pressing the pause button on the handle.

*continued on back*

## 5 On/Off Procedure:

Always place tip in mouth before turning unit on.

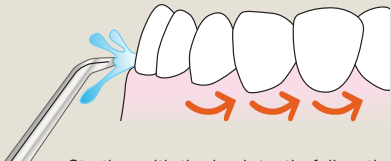
Lean over sink and close lips enough to prevent splashing, while still allowing water to flow from mouth into the sink. Turn unit **ON**.



Always **PAUSE** or turn unit **OFF** before removing tip from mouth.

## 6 Technique Tips for Best Results:

Aim the tip just above the gum line at a 90 degree angle.



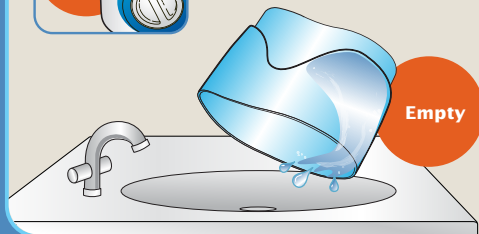
Starting with the back teeth, follow the gum line and pause briefly between teeth. Continue until all areas around and between teeth have been cleaned.

## 7 When finished:

For more details refer to the instruction booklet.



Turn the unit **OFF** and empty any liquid left in the reservoir.



## Free Manuals Download Website

<http://myh66.com>

<http://usermanuals.us>

<http://www.somanuals.com>

<http://www.4manuals.cc>

<http://www.manual-lib.com>

<http://www.404manual.com>

<http://www.luxmanual.com>

<http://aubethermostatmanual.com>

Golf course search by state

<http://golfingnear.com>

Email search by domain

<http://emailbydomain.com>

Auto manuals search

<http://auto.somanuals.com>

TV manuals search

<http://tv.somanuals.com>