

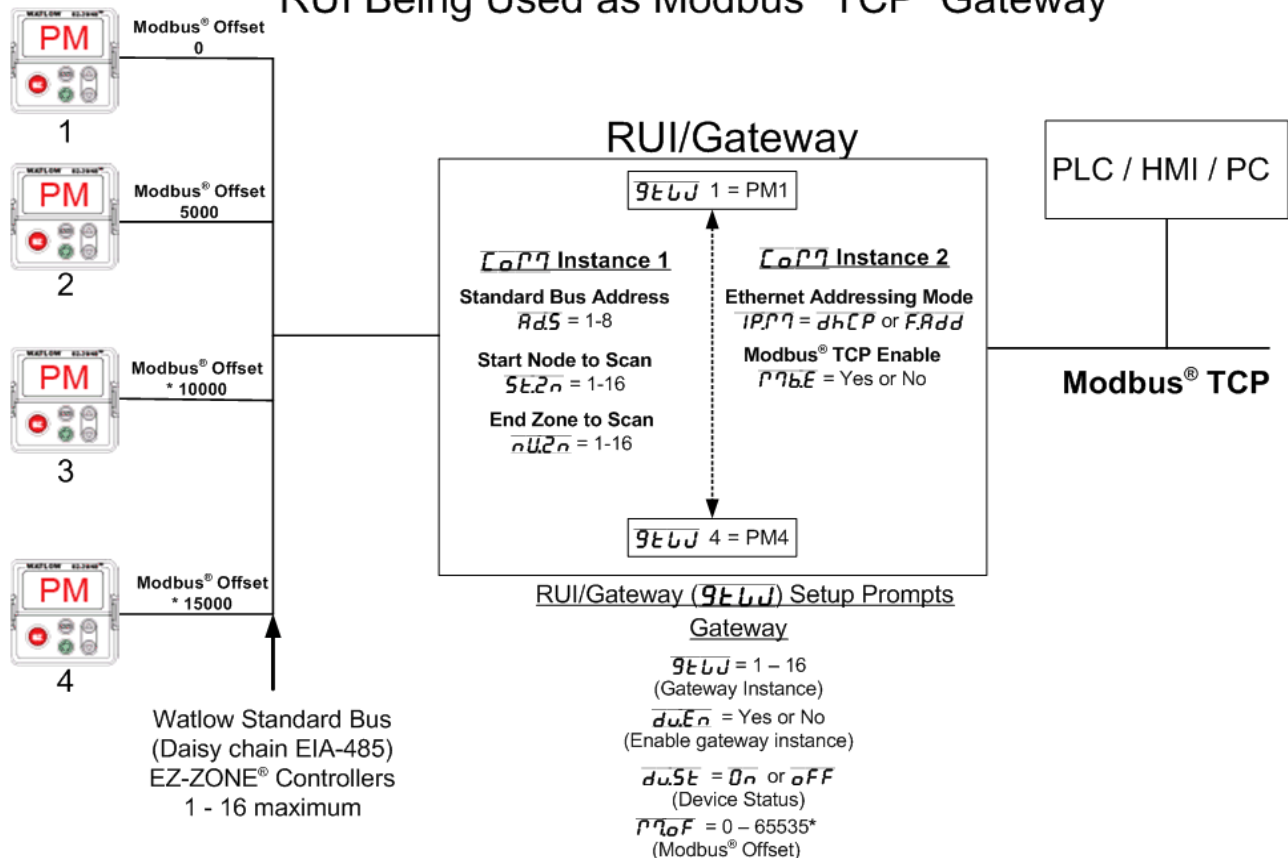


RUI/Gateway & Modbus® TCP Configuration & Programming Example Using KEPServerEX 4.0

Configuring the EZ-ZONE® RUI/Gateway

1. This White Paper is not meant to be an exhaustive step-by-step discussion in configuring the RUI/Gateway, for this work has already been done in two other published EZ-ZONE® user manuals. For instance, if needing assistance in setting the RUI/Gateway IP (Internet Protocol) address or if you are simply looking for general information pertaining to Modbus® TCP as it is used with EZ-ZONE® controls point your internet browser to the Watlow website (<http://www.watlow.com>) and download the EZ-ZONE® PM Communications user manual and or the EZ-ZONE® RUI/Gateway user manual.
2. Prior to looking closer at the RUI/Gateway configuration prompts let's first take a look at the network in use.

RUI Being Used as Modbus® TCP Gateway



* The RUI allows for a maximum entry of 9999 due to the limitations of the 7 segment display. To enter an offset > 9999 EZ-ZONE® configurator software must be used.

Watlow
 1241 Bundy Blvd
 Winona, MN 55987
 Telephone: 507-494-5656
 © 2008 Watlow Electric Mfg Co



RUI/Gateway & Modbus® TCP Configuration & Programming Example Using KEPServerEX 4.0

3. Some notables regarding the graphic above. In the steps that follow we are going to focus on four of the prompts shown: a. Modbus® Enable (Y) b. Gateway instance (2) c. Gateway enable (Y) d. Modbus® offset (0)
4. Notice in the graphic in step 2 that the RUI/Gateway has 2 “Com” instances. Com instance 1 will always be Standard Bus and Com instance 2 will always be the user protocol of choice, in this case, Modbus® TCP. This protocol when ordered also comes standard with EtherNet/IP™ (Industrial Protocol) as well. When setting the prompts for Com instance 2 you must first enable Modbus® TCP, EtherNet/IP™ or both. For the purpose of this paper the prompt displayed as Y will be set to yes (Modbus® TCP enabled). If a step-by-step example is needed to fully configure the RUI/Gateway refer to step one and download the appropriate user manual.
5. To implement the network shown in step two the following settings will need to be entered:

Gateway Instance	Enable Gateway Instance	Modbus® Offset
<u>1</u>	<u>Y</u> = Yes	<u>0</u>
<u>2</u>	<u>Y</u> = Yes	<u>5000</u>
<u>3</u>	<u>Y</u> = Yes	<u>* 10000</u>
<u>4</u>	<u>Y</u> = Yes	<u>* 15000</u>

Further explanation of these prompts and their associated enumerated values will follow.

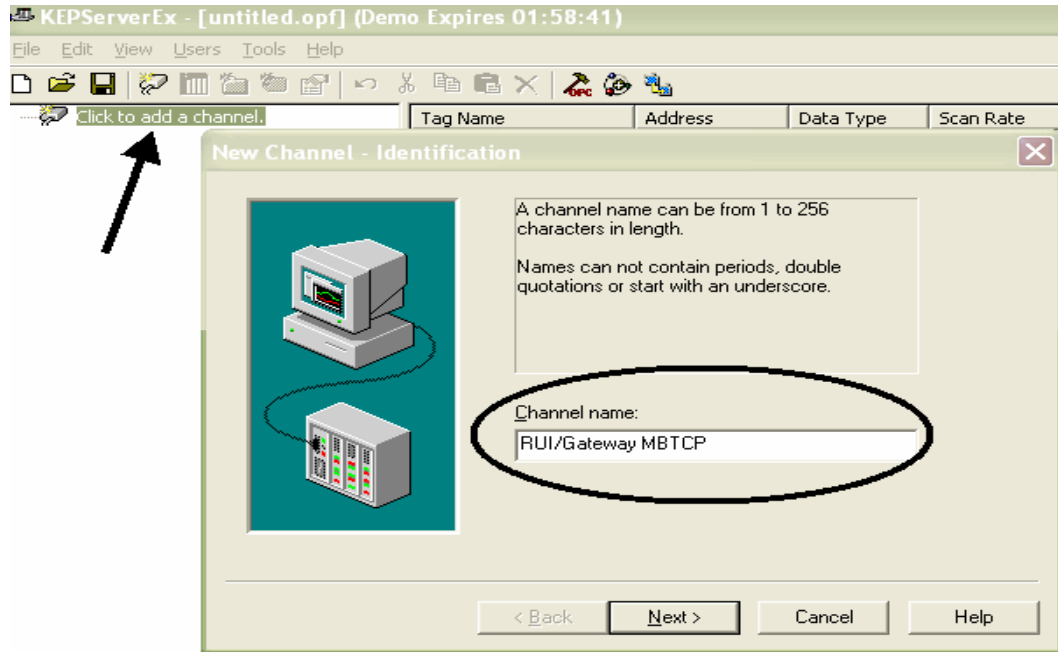
*** The RUI allows for a maximum entry of 9999 due to the limitations of the 7 segment display. To enter an offset > 9999 EZ-ZONE® configurator software must be used.**

6. After completing the configuration as shown above as well as your Com 1 settings for the Standard Bus side this will complete the RUI/Gateway configuration.
7. Note that KEPServerEX is one of many software packages on the market today that include the Modbus® TCP driver; this procedure is for KEPServerEX.
8. The following screen shots capture a step-by-step procedure to successfully establish Communications between the computer (PC) running KEPServerEX and the EZ-ZONE® RUI/Gateway (Com instance 2) over Modbus® TCP. Once communications are established over Com instance 2 we will then look further at the KEPServerEX configuration that will enable communications through the RUI/Gateway to Com instance 1 and the EZ-ZONE® PM controls (1 - 4) over Standard Bus; thereby establishing a live and active communications link between dissimilar networks.

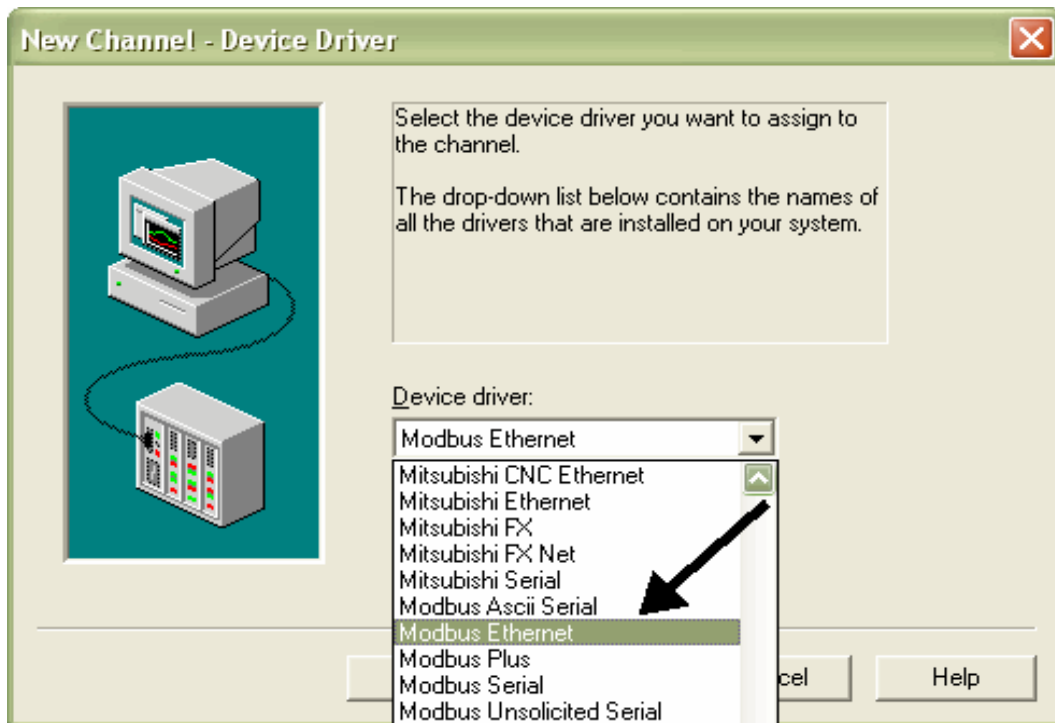


RUI/Gateway & Modbus® TCP Configuration & Programming Example Using KEPServerEX 4.0

9. Provide a name for the channel.



10. In this example the device driver selected will be "Modbus Ethernet".

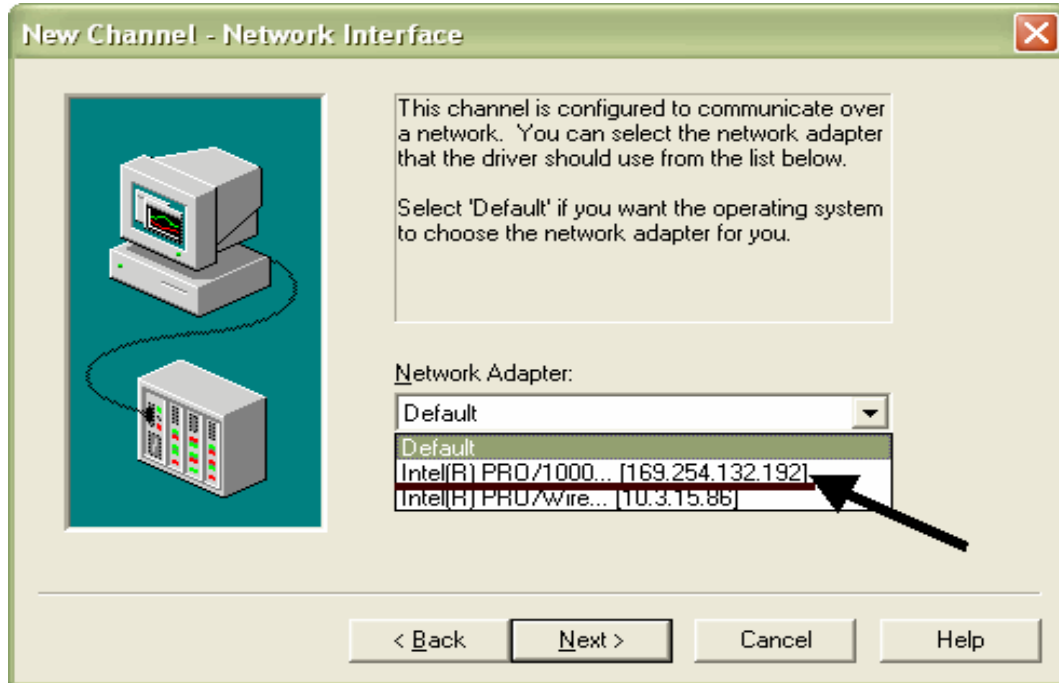


Watlow
1241 Bundy Blvd
Winona, MN 55987
Telephone: 507-494-5656
© 2008 Watlow Electric Mfg Co

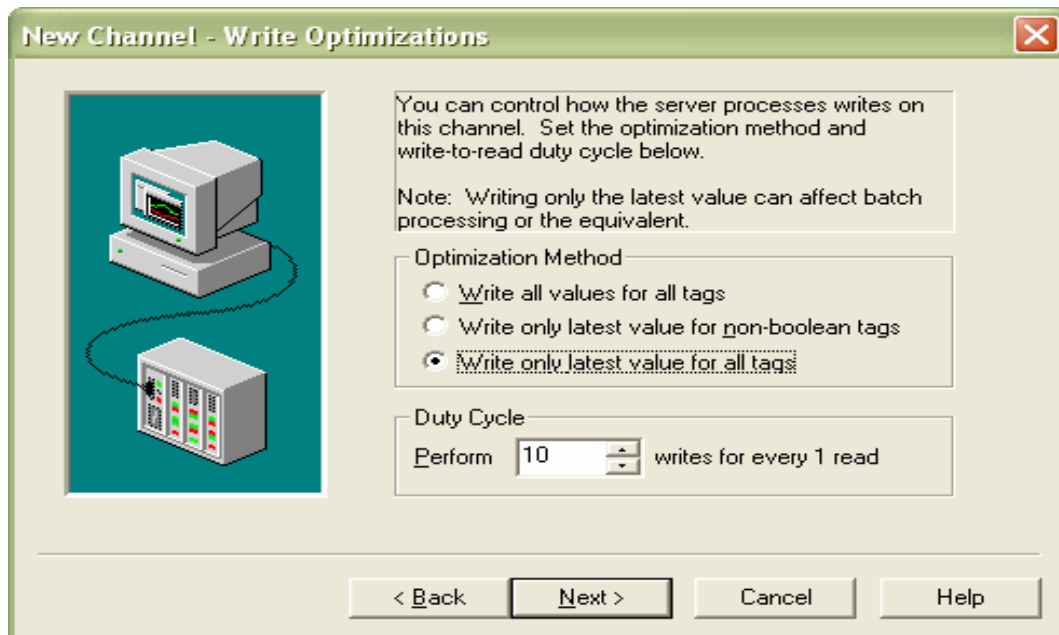


RUI/Gateway & Modbus® TCP Configuration & Programming Example Using KEPServerEX 4.0

11. Select the appropriate hardware (network adapter) used on the network.



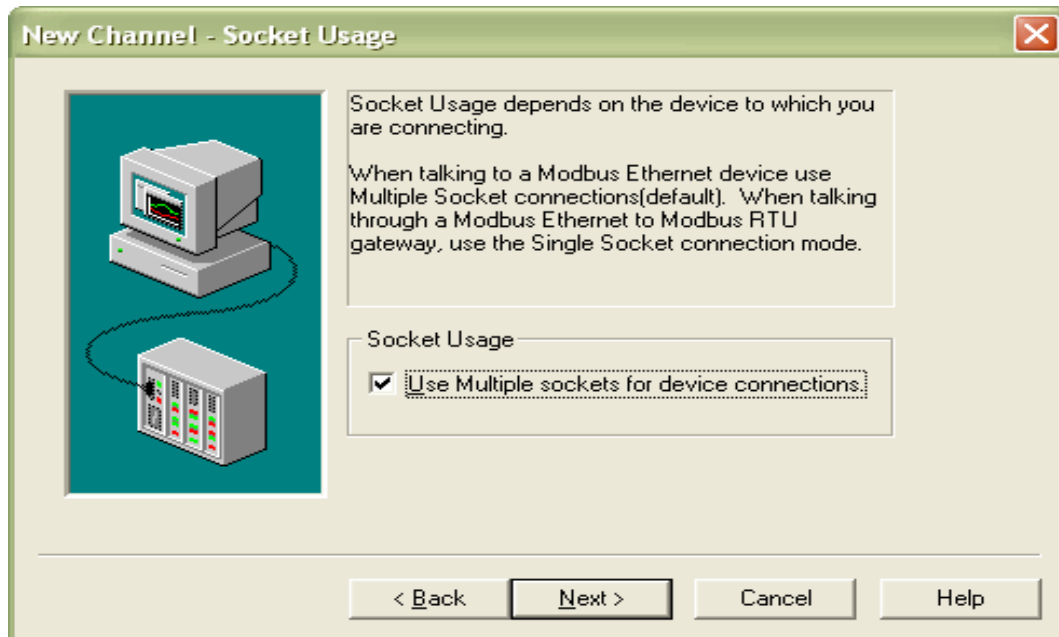
12. Next, select the appropriate write optimization method.



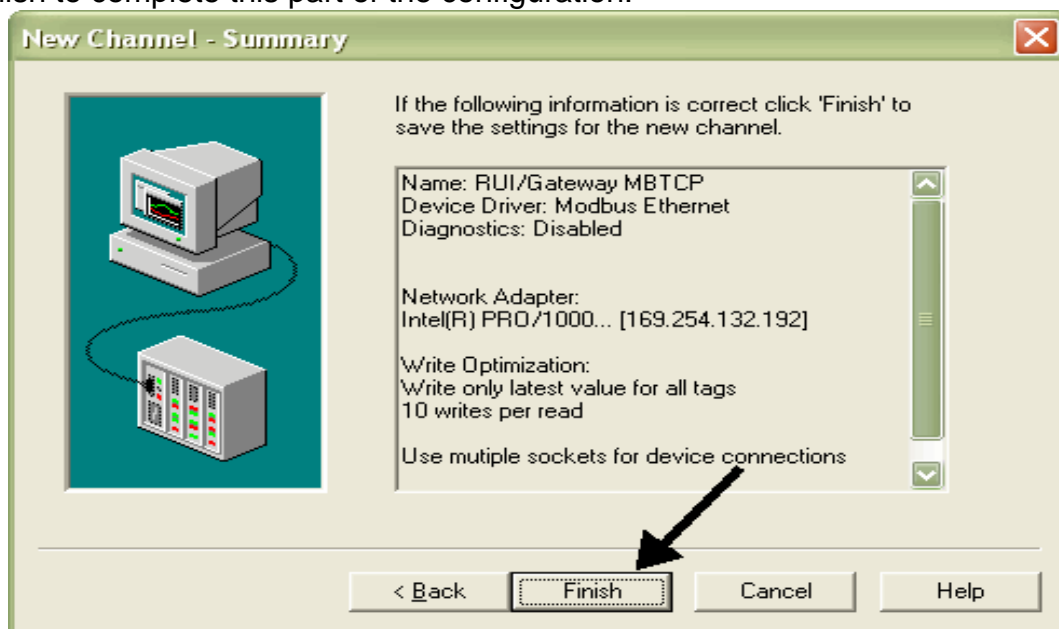


RUI/Gateway & Modbus® TCP Configuration & Programming Example Using KEPServerEX 4.0

- The next selection allows for multiple masters on the network. When multiple masters exist on a network talking (reading & writing) to the same slaves, possible conflicts between masters can exist when performing a write operation.



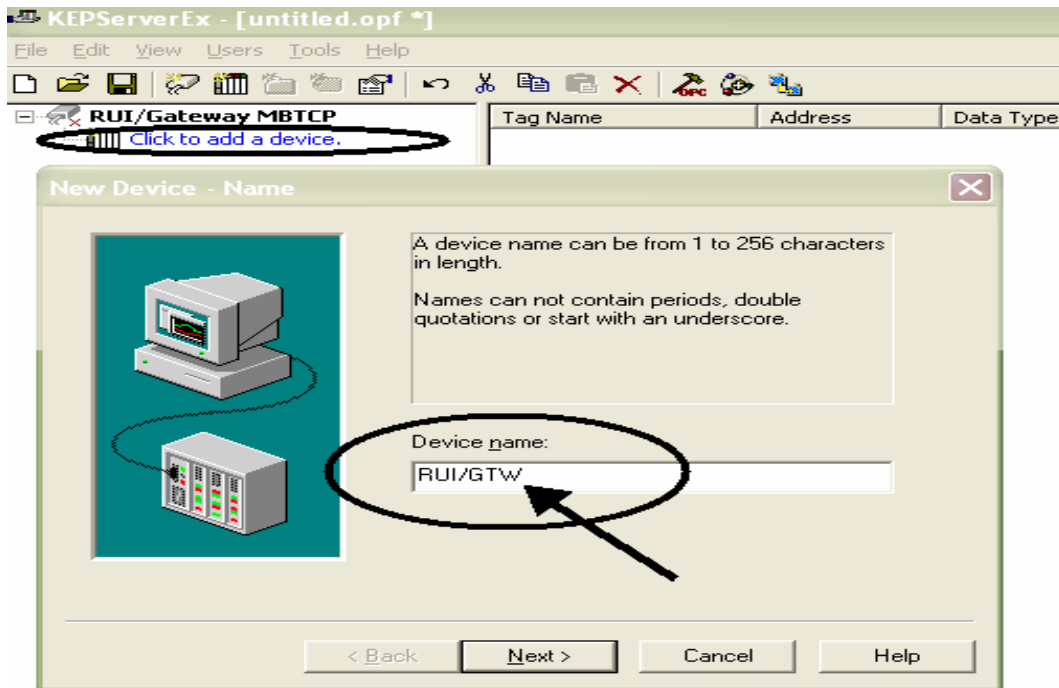
- Click finish to complete this part of the configuration.



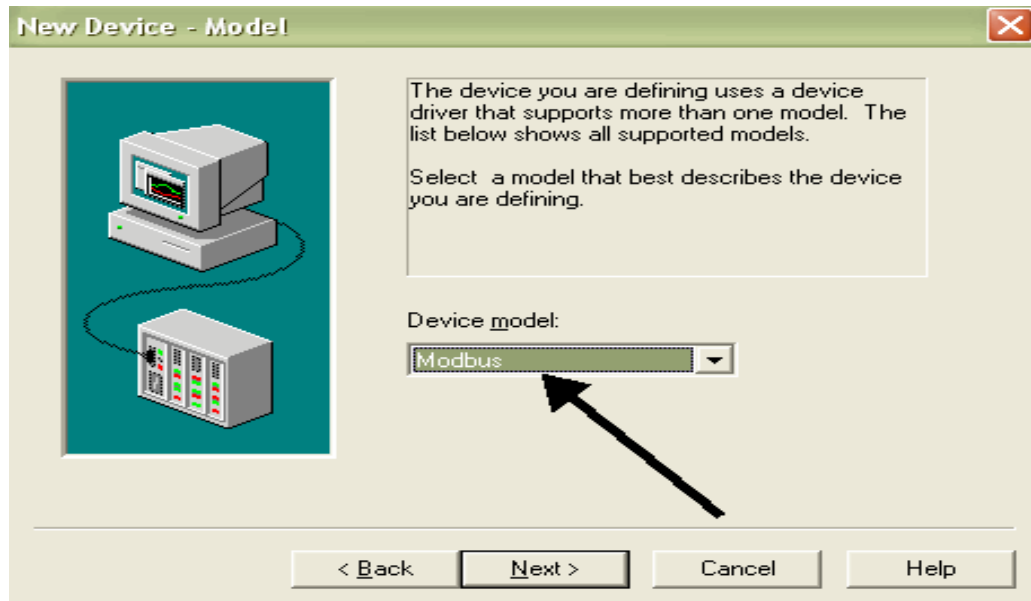


RUI/Gateway & Modbus® TCP Configuration & Programming Example Using KEPServerEX 4.0

15. Once the channel configuration is complete it is now time to configure a device (RUI/Gateway).



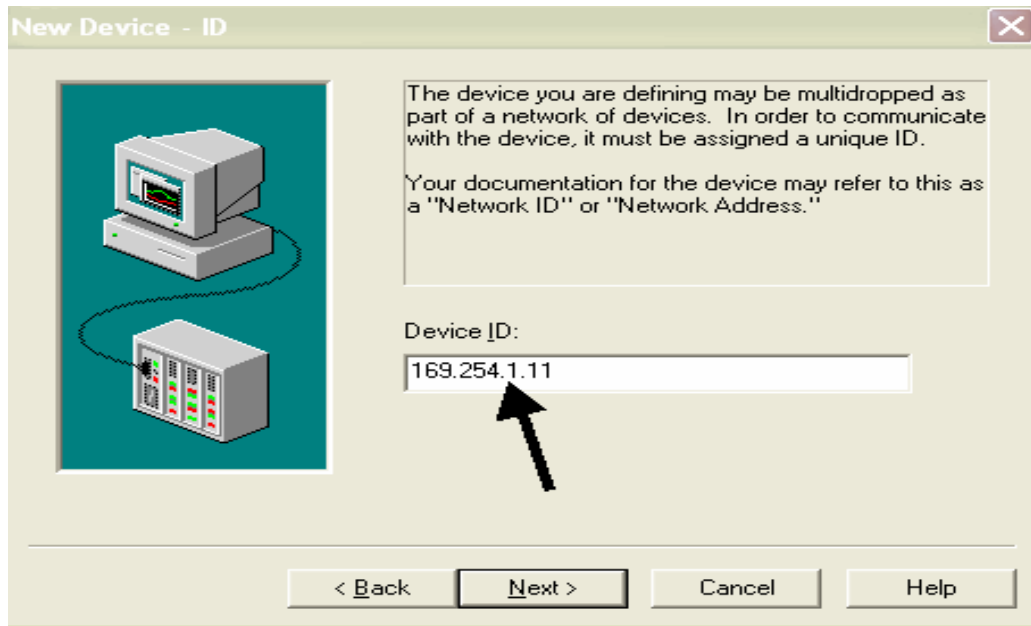
16. Select the Modbus® driver.



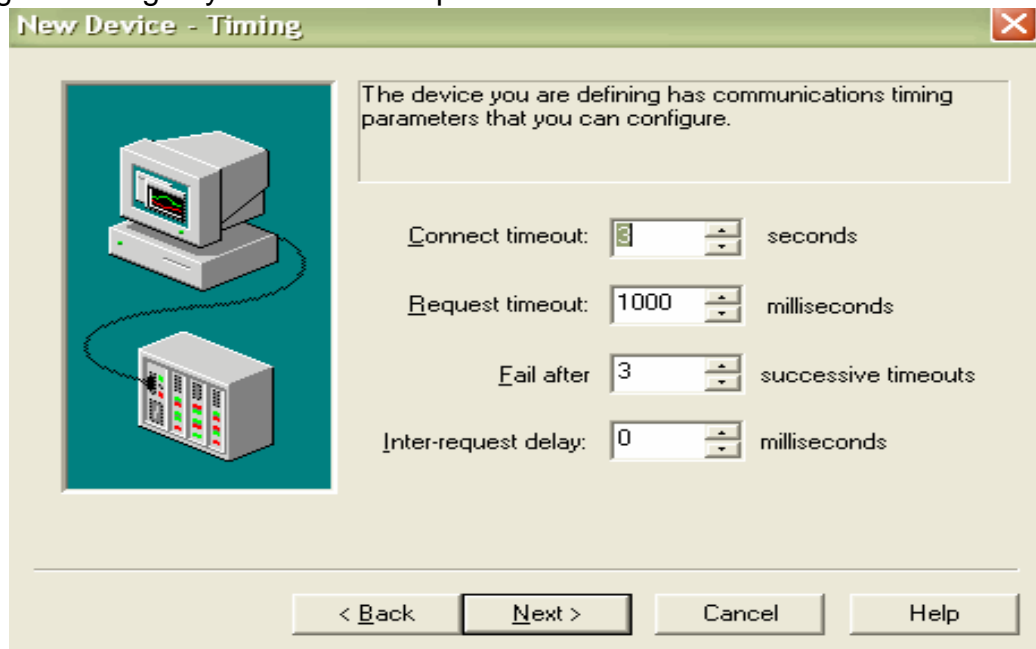


RUI/Gateway & Modbus[®] TCP Configuration & Programming Example Using KEPServerEX 4.0

17. Recall that in steps 1-3 it was said that there are other configuration steps that need to be addressed that are not covered in this paper. As an example of those parameters that need to be set on the RUI/Gateway we see the IP address coming into focus. Enter the Modbus[®] TCP/IP address of the RUI/Gateway.



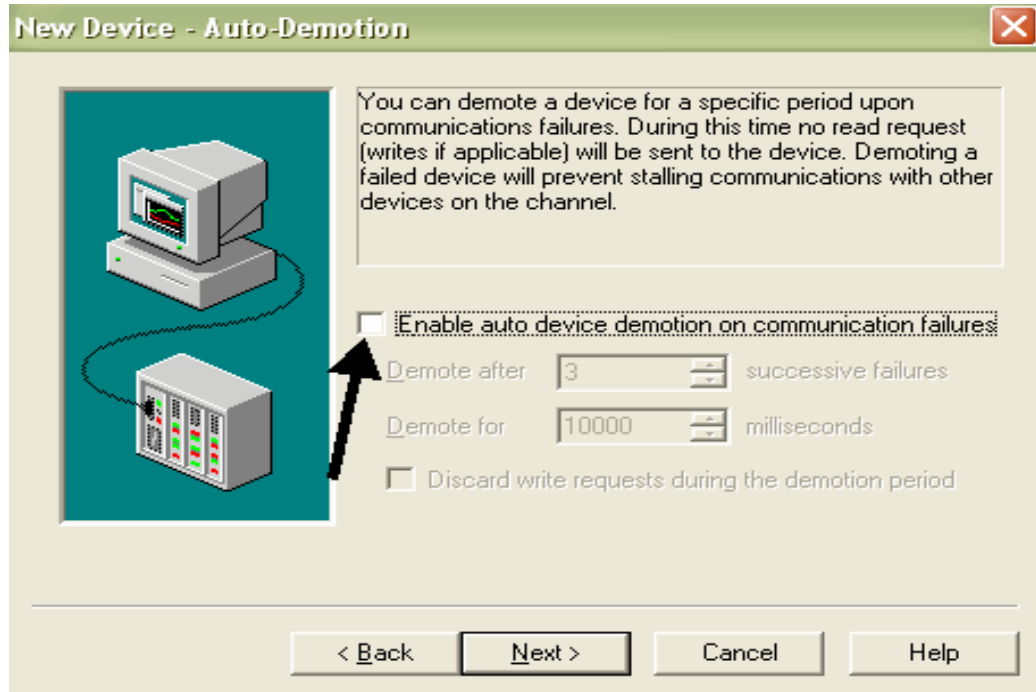
18. Set timing according to your network requirements.



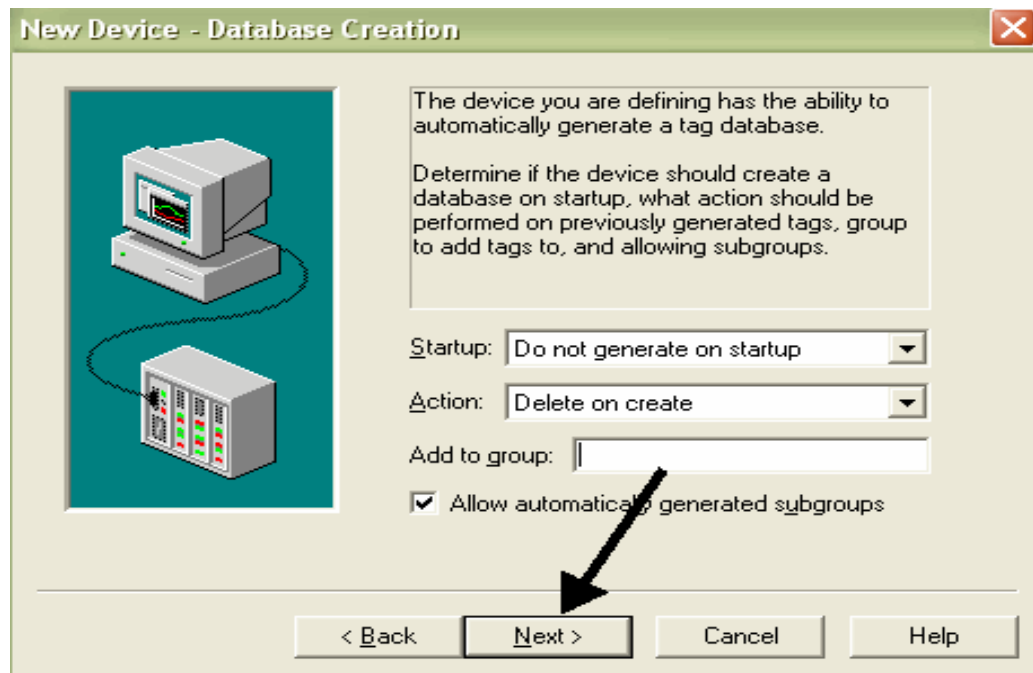


RUI/Gateway & Modbus® TCP Configuration & Programming Example Using KEPServerEX 4.0

19. If communications fail between KEPServerEX and RUI/Gateway stop polling device.



20. Generate unique input / output (I/O) tags for the RUI/Gateway.

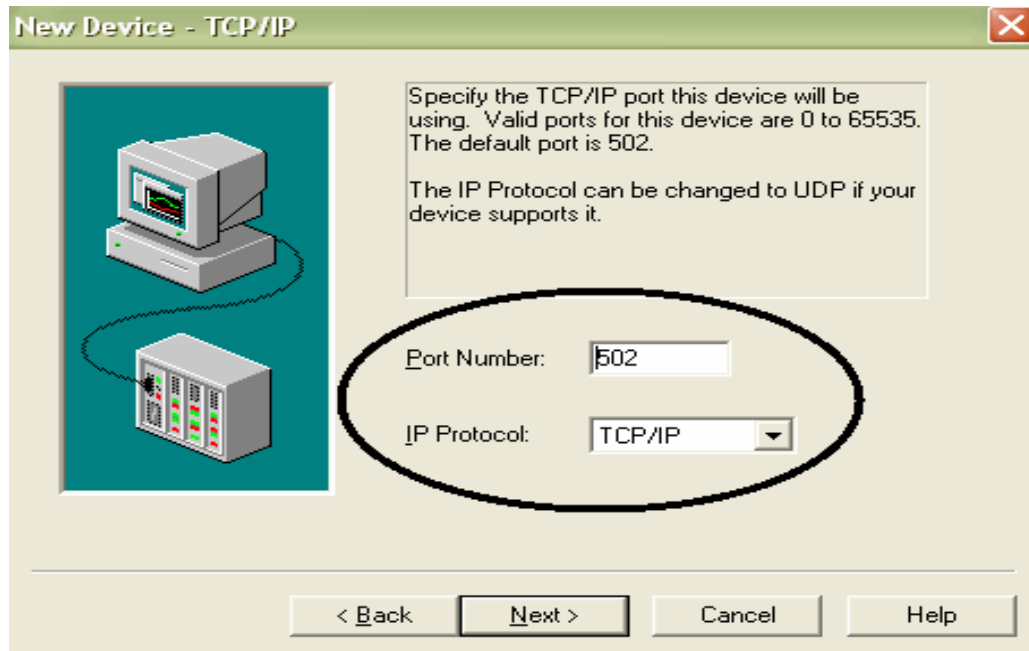


Watlow
1241 Bundy Blvd
Winona, MN 55987
Telephone: 507-494-5656
© 2008 Watlow Electric Mfg Co

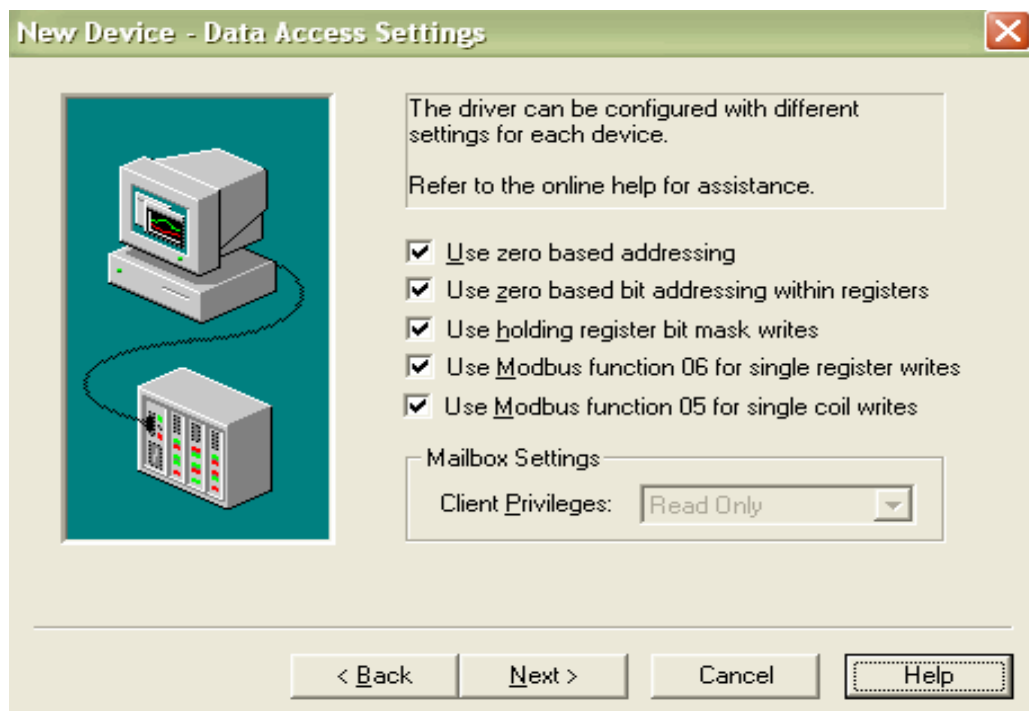


RUI/Gateway & Modbus® TCP Configuration & Programming Example Using KEPServerEX 4.0

21. Use the defaults for port number and IP protocol.



22. Use the defaults as shown.

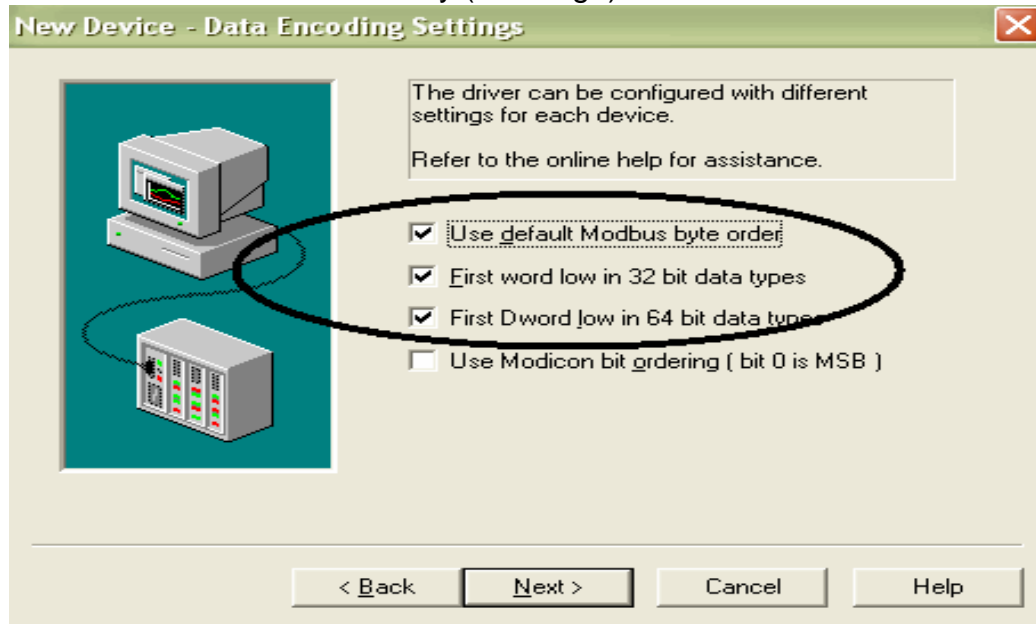


Watlow
1241 Bundy Blvd
Winona, MN 55987
Telephone: 507-494-5656
© 2008 Watlow Electric Mfg Co

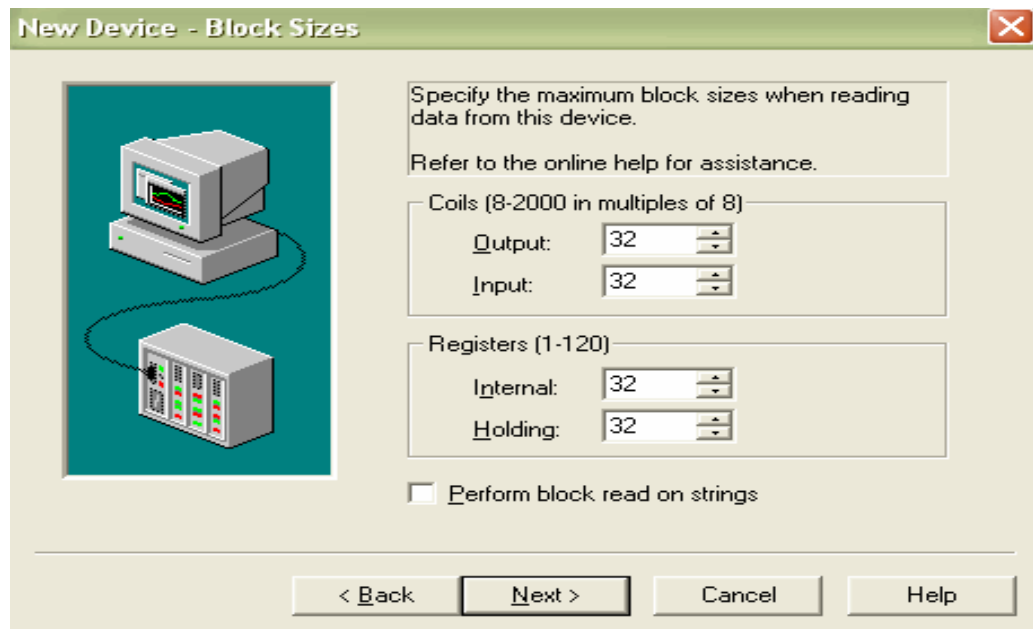


RUI/Gateway & Modbus® TCP Configuration & Programming Example Using KEPServerEX 4.0

23. The graphic below shows the default Modbus® word order which also represents the default Modbus® word order for the RUI/Gateway (Low/High).



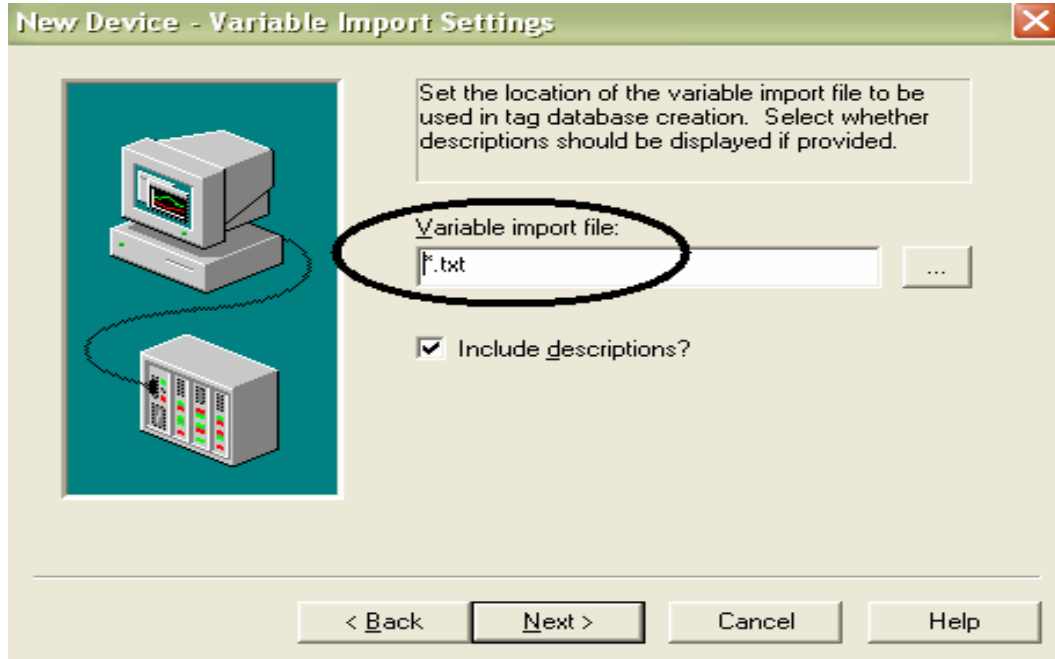
24. Coil access is not used with the RUI/Gateway. The number of registers shown limits KEPServerEX in the maximum number of registers which can be read at a time.



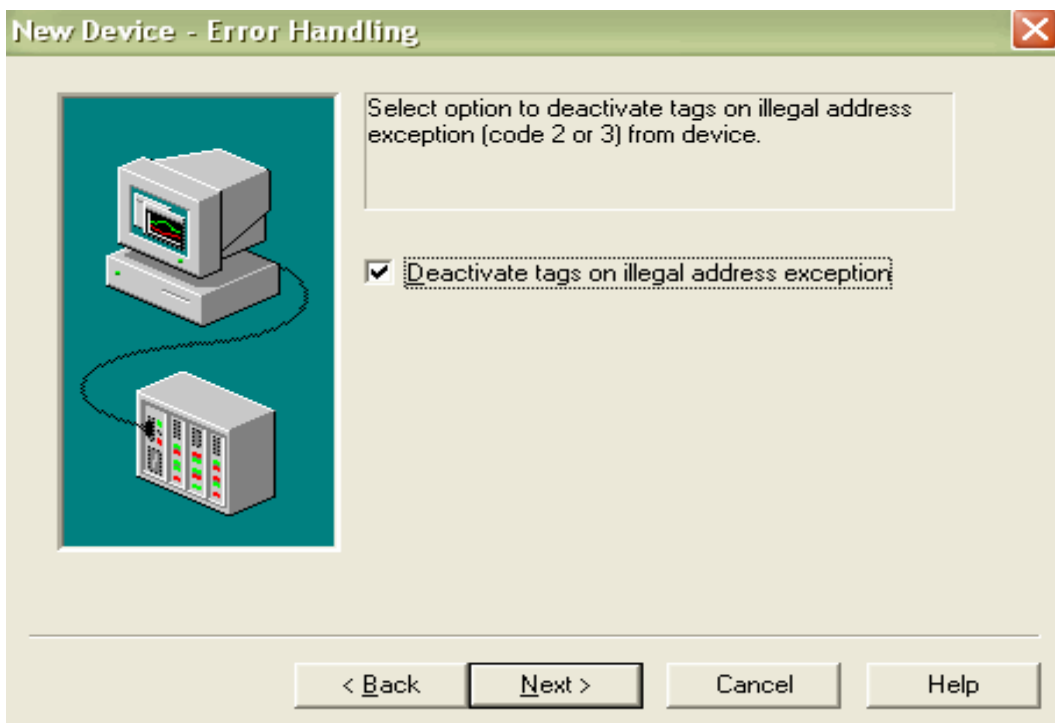


RUI/Gateway & Modbus® TCP Configuration & Programming Example Using KEPServerEX 4.0

25. KEPServerEX allows for imported tags via a text file.



26. Any tag returning an exception error will no longer be polled.

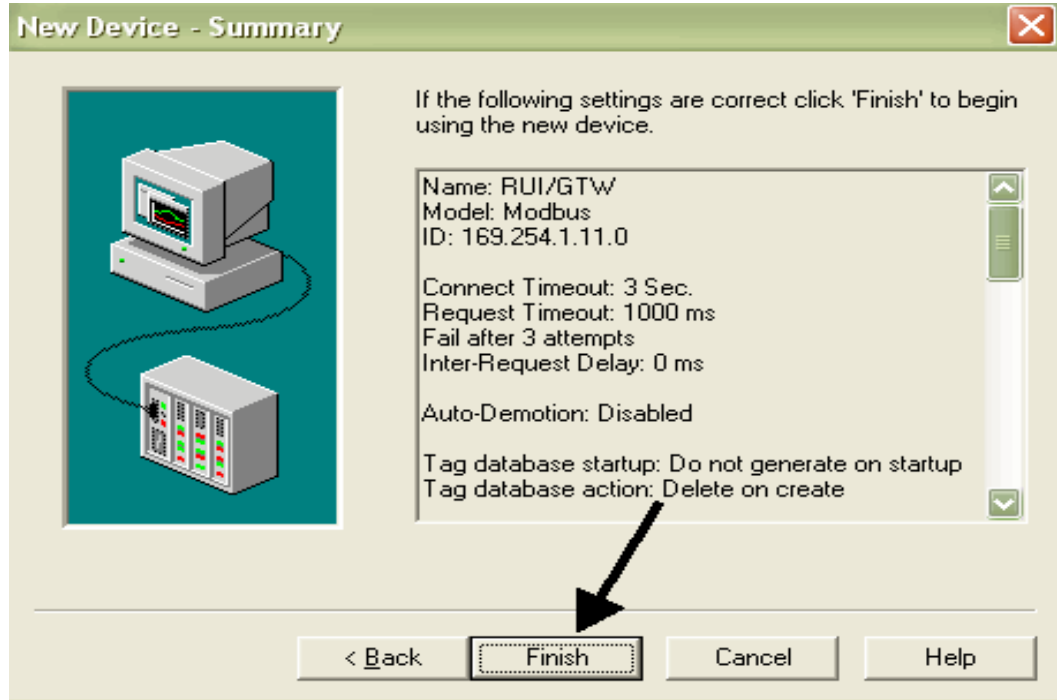


Watlow
1241 Bundy Blvd
Winona, MN 55987
Telephone: 507-494-5656
© 2008 Watlow Electric Mfg Co



RUI/Gateway & Modbus® TCP Configuration & Programming Example Using KEPServerEX 4.0

27. This concludes the device (RUI/Gateway) configuration.



28. Tag creation. In step 5 some prompts were shown indicating further explanation would follow, well, here we are.

The Gateway Instance and the Gateway Enable prompts must be set as shown in step 5 for this particular network. The Gateway Instance corresponds to the address given to the PM control and the Gateway Enable simply requires a “Yes” or “No” response.

When trying to read or write to any given member in a destination PM control it is important to keep in mind that there is a unique Modbus® address set aside for that member. As an example, note that as found in the EZ-ZONE® PM Communications user manual under the “Operations Page” Process Value 1 (PV1) is given a Modbus® address of 360 with a data type of floating point. As shown in the graphic in step two of this document there are four PM controls on the Standard Bus side of the network where each has the same address for PV1. As read through the RUI/Gateway, if it is desired to read PV1 of PM3 the Modbus® offset ($P_{1,0,F}$) must be observed and used. So, in this particular case, the appropriate address to be read would be 410361 not 400361 where the offset as shown in step 5 for PM3 is 10000. Based on this network configuration, if it is desired to read PV1 from each of the four PM controls on the Standard Bus side of the network the following addresses would correlate to



RUI/Gateway & Modbus® TCP Configuration & Programming Example Using KEPServerEX 4.0

each:

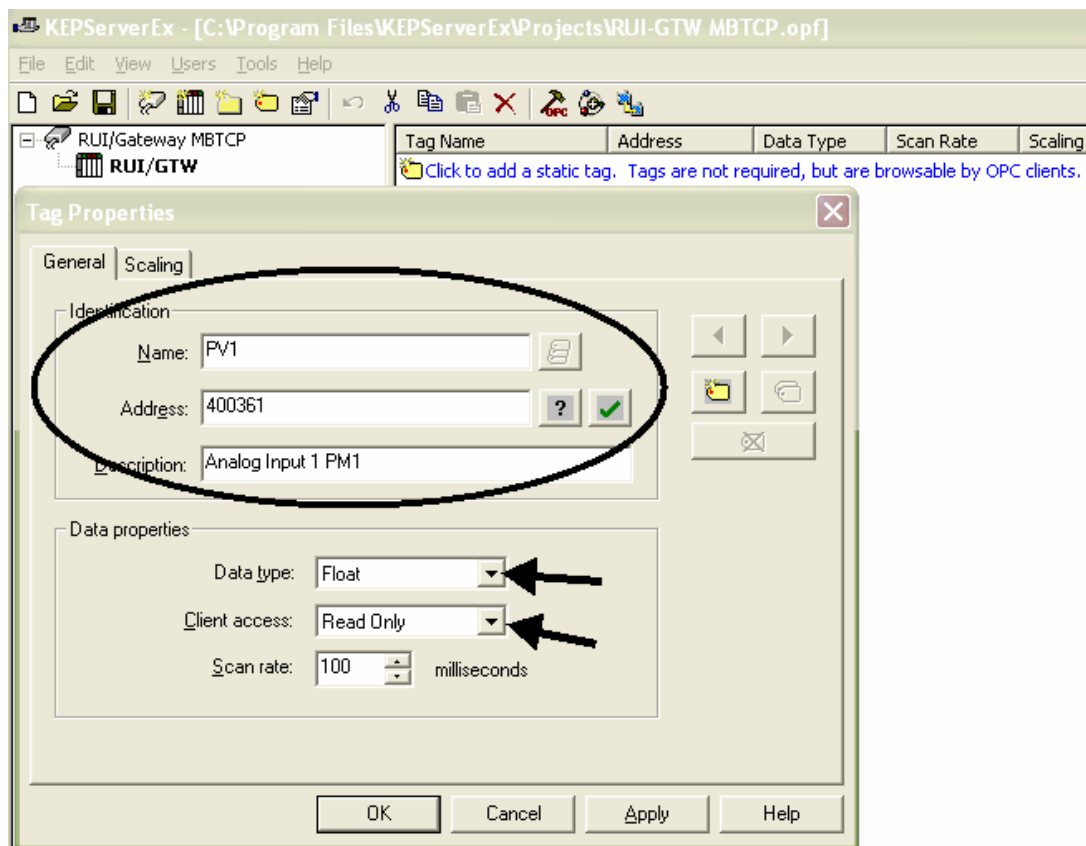
PV1 of PM1 = 400361 (offset = 0)

PV1 of PM2 = 405361 (offset = 5000)

PV1 of PM3 = 410361 (offset = 10000)

PV1 of PM4 = 415361 (offset = 15000)

29. Now that we know the finer details of the Modbus® offset prompts lets go back to KEPServerEX and look closer at the tag configuration and properties.

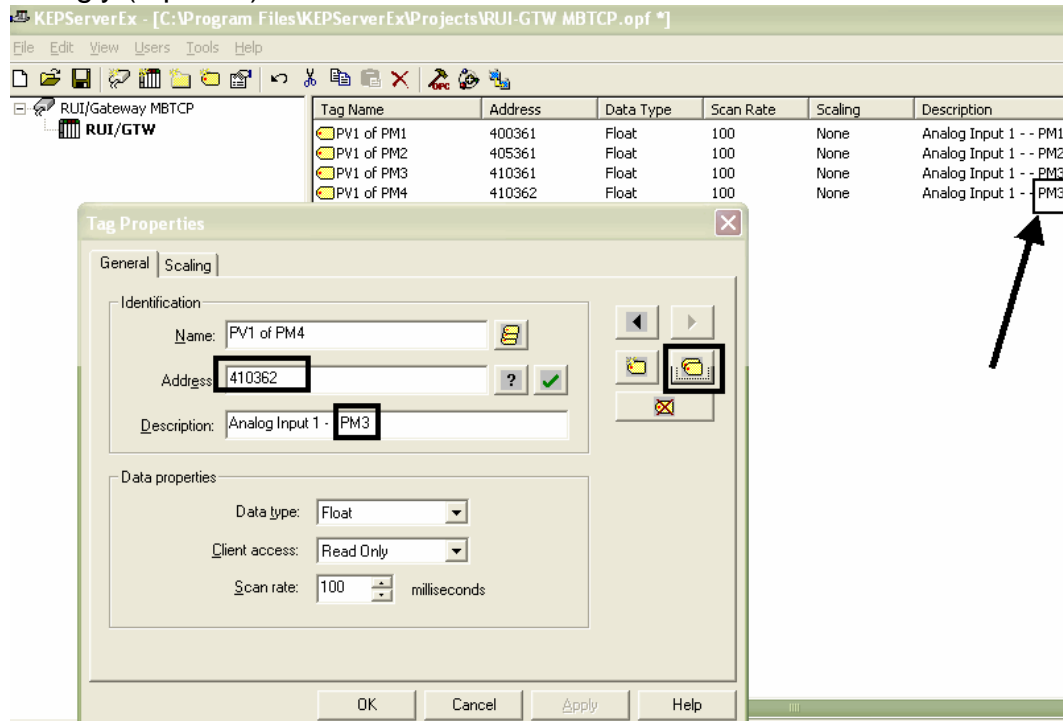


As can be seen above the “Tag Properties” dialogue box will open after clicking on the blue link identified as (“Click to add...”). The name and description are user defined where the Modbus® address will be specific as it relates to the member being read or written to.

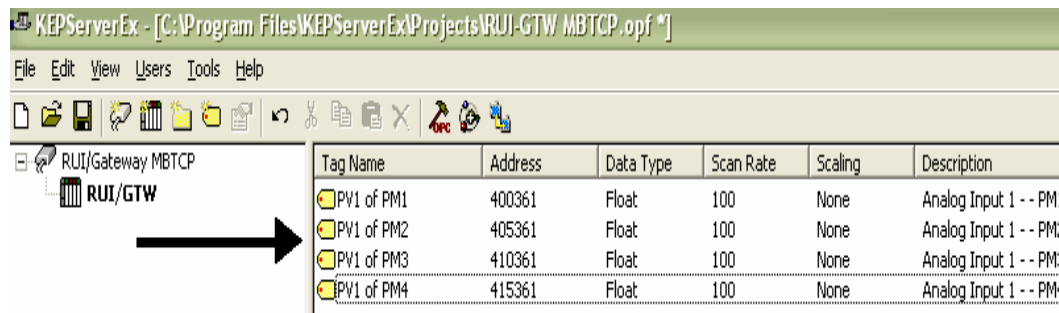


RUI/Gateway & Modbus® TCP Configuration & Programming Example Using KEPServerEX 4.0

30. To create similar tags for PV2 - PV4 simply click on the duplicate icon (circle) and change the fields accordingly (squares).



31. Once each of the Process Variables are configured and made available to KEPServerEX a similar screen as shown below should be displayed.



32. The above examples represent tags for inputs where a similar procedure beginning at step 29 can be used to create output tags. In this case, tags were created for the Closed Loop Set Points (CLSP) for each control (PM1 - PM4). As was the case for the inputs (PV1), the new Modbus® register in focus (2160) can be found in the EZ-ZONE® PM Communications User Manual, starting at the "Operations Page" and then under the "Loop Menu". With this being

Watlow
1241 Bundy Blvd
Winona, MN 55987
Telephone: 507-494-5656
© 2008 Watlow Electric Mfg Co



RUI/Gateway & Modbus® TCP Configuration & Programming Example Using KEPServerEX 4.0

said, look closely at the addresses given in defining the CLSP for each of the four PM controls.

Tag Name	Address	Data Type	Scan Rate	Scaling	Description
CLSP of PM1	402161	Float	100	None	Closed Loop Set Point -- PM1
CLSP of PM2	407161	Float	100	None	Closed Loop Set Point -- PM2
CLSP of PM3	412161	Float	100	None	Closed Loop Set Point -- PM3
CLSP of PM4	417161	Float	100	None	Closed Loop Set Point -- PM4
PV1 of PM1	400361	Float	100	None	Analog Input 1 -- PM1
PV1 of PM2	405361	Float	100	None	Analog Input 1 -- PM2
PV1 of PM3	410361	Float	100	None	Analog Input 1 -- PM3
PV1 of PM4	415361	Float	100	None	Analog Input 1 -- PM4

33. In the screen shot above we now see a series of inputs and outputs that have been configured within KEPServerEX. To test the live and active connection using this software, simply click on the OPC quick client icon where the “Value” column shown below allows for active reading and writing to each of the PM controls on Standard Bus.

Item ID	Data Type	Value	Timestamp
RUI/Gateway MBTCP.RUI/GTW.CLSP of PM1	Float	111	14:02:56:037
RUI/Gateway MBTCP.RUI/GTW.CLSP of PM2	Float	625	14:02:56:361
RUI/Gateway MBTCP.RUI/GTW.CLSP of PM3	Float	222	14:02:56:555
RUI/Gateway MBTCP.RUI/GTW.CLSP of PM4	Float	145	14:02:56:604
RUI/Gateway MBTCP.RUI/GTW.PV1 of PM1	Float	82.0372	14:08:57:374
RUI/Gateway MBTCP.RUI/GTW.PV1 of PM2	Float	84.035	14:08:57:485
RUI/Gateway MBTCP.RUI/GTW.PV1 of PM3	Float	282.249	14:08:56:470
RUI/Gateway MBTCP.RUI/GTW.PV1 of PM4	Float	76.7086	14:08:57:659

Watlow
1241 Bundy Blvd
Winona, MN 55987
Telephone: 507-494-5656
© 2008 Watlow Electric Mfg Co



RUI/Gateway & Modbus[®] TCP Configuration & Programming Example Using KEPServerEX 4.0

34. To better understand the following discussion and examples download and read the section entitled “User Programmable Memory Blocks” found in the EZ-ZONE[®] PM Communications user manual.

When using the RUI/Gateway equipped with Modbus[®] TCP or Modbus[®] RTU and while communicating with EZ-ZONE[®] *PM controls a block of 40 pointers or 80 words has been created to serve as the “Assembly Definition Addresses” and another group of 40 elements or 80 words has been defined as the “Assembly Working Addresses”. The Assembly Definition Addresses are user configurable. Once configured with the Modbus[®] registers of choice, the corresponding Assembly Working Addresses assume that particular parameter as programmed, and will then reflect that parameters actual value. What this means then is that the user can configure a contiguous block of 40 elements or 80 words to any available parameter of their liking. It is recommended that when doing this configuration that the parameters data type be considered. It is much easier to set up a contiguous block of words of the same data type.

Note:

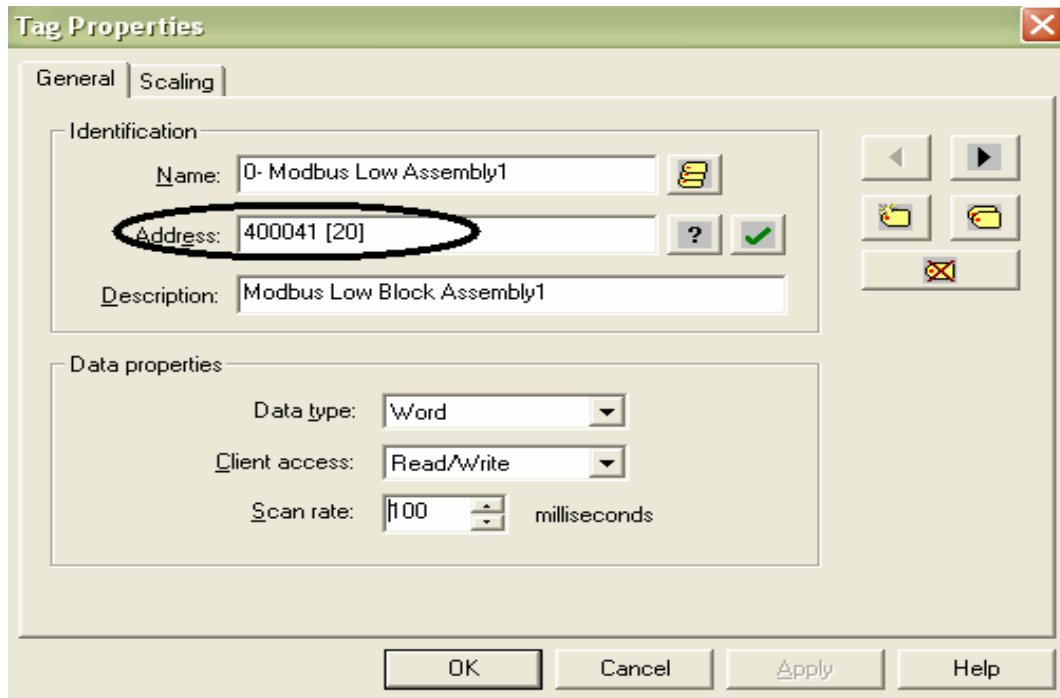
If the user sets any of the EZ-ZONE[®] PM controls back to factory defaults this assembly for that control will set to the factory defaults as well.

*** The EZ-ZONE[®] ST does not support programmable memory blocks. However, any ST parameter that is available over Modbus[®] can be accessed in a similar manner as was described in step 29.**

35. In step 24 we defined the maximum number of words that can be read as 32. The maximum number of words Modbus[®] allows to be read at one time is 120 or 240 bytes, so all 80 words could be read and or written to if so desired. Due to this previous entry (step 24) in order to read the low order 40 words there were two read tags configured, 20 words each defining them as “Low order Assembly 1 & Low order assembly2”. Likewise, the same was done for the upper 40 words where they are defined as “High order Assembly 1 & High order Assembly2”. The screen shot below was duplicated 3 more times simply changing the names and addresses to create the tags mentioned above.



RUI/Gateway & Modbus® TCP Configuration & Programming Example Using KEPServerEX 4.0



36. In the screen shot that follows one can see the factory defaults for the Assembly Definition Addresses (block of 80 words) as they are being read through the RUI/Gateway. As explained in the EZ-ZONE® PM Communications user manual and above as well, the enumerated values shown in each of these Modbus® registers represents the actual Modbus® registers for each of the 80 corresponding Assembly Working Addresses. To find what these Modbus® registers actually represent (as in which parameter is actually defined), check out the Operations & Setup pages of the EZ-ZONE® PM Communications user manual.
37. Registers 80 & 81 (circled below) are shown as “Analog Input 1 Process Value” represented by the enumerated values of 360 and 361 respectively. If reading the associated Assembly Working Address registers 240 & 241, one would find the current Analog Input 1 Process Value.



RUI/Gateway & Modbus® TCP Configuration & Programming Example Using KEServerEX 4.0

Item ID	Value
RUI/Gateway MBTCP.RUI/GTW.0- Modbus Low Assembly1	[1880, 1881, 2160, 2161, 2162, 2163, 1480, 1481, 1482, 1483, 1530, 1531, 1532, 1533, 1580, 1581, 1582, 1583, 1630, 1631]
RUI/Gateway MBTCP.RUI/GTW.0- Modbus Low Assembly2	[1632, 1633, 2540, 2541, 2520, 2521, 1890, 1891, 1892, 1893, 1894, 1895, 1896, 1897, 1900, 1901, 1902, 1903, 1898, 1899]
RUI/Gateway MBTCP.RUI/GTW.1- Modbus High Assembly1	[360, 361, 362, 363, 440, 441, 442, 443, 1496, 1497, 1546, 1547, 1596, 1597, 1646, 1647, 1328, 1329, 1348, 1349]
RUI/Gateway MBTCP.RUI/GTW.1- Modbus High Assembly2	[1882, 1883, 1904, 1905, 1906, 1907, 690, 691, 2520, 2521, 2540, 2541, 2524, 2525, 2526, 2527, 2528, 2529, 2536, 2537]
RUI/Gateway MBTCP.RUI/GTW.CLSP of PM1	75
RUI/Gateway MBTCP.RUI/GTW.CLSP of PM2	75
RUI/Gateway MBTCP.RUI/GTW.CLSP of PM3	222
RUI/Gateway MBTCP.RUI/GTW.CLSP of PM4	777
RUI/Gateway MBTCP.RUI/GTW.PV1 of PM1	80.9274
RUI/Gateway MBTCP.RUI/GTW.PV1 of PM2	79.6534
RUI/Gateway MBTCP.RUI/GTW.PV1 of PM3	282.304
RUI/Gateway MBTCP.RUI/GTW.PV1 of PM4	76.8568

38. Changing an element in the assembly is EZ. A new tag was created as shown below. Notice the address identified as well as the data type.

Tag Properties

General | Scaling

Identification

Name: New Assembly - Pointer 12

Address: 400063

Description: Idle Set Point

Data properties

Data type: DWord

Client access: Read/Write

Scan rate: 100 milliseconds

OK Cancel Apply Help

Watlow
1241 Bundy Blvd
Winona, MN 55987
Telephone: 507-494-5656
© 2008 Watlow Electric Mfg Co



RUI/Gateway & Modbus® TCP Configuration & Programming Example Using KEPServerEX 4.0

39. The address shown above represents pointer 12 as shown in the EZ-ZONE® PM Communications user manual under the sub-heading of “User Programmable Memory Blocks”.
Again, focus on the address below. This particular address represents the Assembly Working Address for pointer 12.

Tag Properties

General | Scaling

Identification

Name: Idle Set Point

Address: 400223

Description: Idle Set Point - PM1

Data properties

Data type: Float

Client access: Read/Write

Scan rate: 100 milliseconds

OK Cancel Apply Help

40. Now that the tags are created execute the OPC quick client as illustrated in step 33. Once running, click on the tag created to modify the assembly. In this case, “New Assembly - Pointer 12”. Based on the “Description” field in the screen shot in step 38 and 39 pointer 12 will become the Idle Set Point of PM1 once changed. The value to be written below reflects this.

Asynchronous 2.0 Write

Item ID	Current Value	Write Value
RUI/Gateway MBTCP.R...	142674048	2177

OK Apply Cancel

Watlow
1241 Bundy Blvd
Winona, MN 55987
Telephone: 507-494-5656
© 2008 Watlow Electric Mfg Co



RUI/Gateway & Modbus® TCP Configuration & Programming Example Using KEPServerEX 4.0

42. Lastly, in the screen shot below, notice that the 12th pointer has indeed been changed to Idle Set Point (circle) and the tag created to reflect this (arrow) shows the current Idle Set Point for PM1. Compare this to the default assembly found in step 37 above.

Item ID	Value
RUI/Gateway MBTCP.RUI/GTW.0- Modbus Low Assembly1	[1880, 1881, 2160, 2161, 2162, 2163, 1480, 1481, 1482, 1483, 1530, 1531, 1532, 1533, 1580, 1581, 1582, 1583, 1630, 1631]
RUI/Gateway MBTCP.RUI/GTW.0- Modbus Low Assembly2	[1632, 1633, 2176, 2177, 2520, 2521, 1890, 1891, 1892, 1893, 1894, 1895, 1896, 1897, 1900, 1901, 1902, 1903, 1898, 1899]
RUI/Gateway MBTCP.RUI/GTW.1- Modbus High Assembly1	[360, 361, 362, 363, 440, 441, 442, 443, 1496, 1497, 1546, 1547, 1596, 1597, 1646, 1647, 1328, 1329, 1348, 1349]
RUI/Gateway MBTCP.RUI/GTW.1- Modbus High Assembly2	[1882, 1883, 1904, 1905, 1906, 1907, 690, 691, 2520, 2521, 2540, 2541, 2524, 2525, 2526, 2527, 2528, 2529, 2536, 2537]
RUI/Gateway MBTCP.RUI/GTW.CLSP of PM1	75
RUI/Gateway MBTCP.RUI/GTW.CLSP of PM2	75
RUI/Gateway MBTCP.RUI/GTW.CLSP of PM3	222
RUI/Gateway MBTCP.RUI/GTW.CLSP of PM4	455
RUI/Gateway MBTCP.RUI/GTW.Idle Set Point	355
RUI/Gateway MBTCP.RUI/GTW.New Assembly - Pointer 12	142674048
RUI/Gateway MBTCP.RUI/GTW.PV1 of PM1	81.2463
RUI/Gateway MBTCP.RUI/GTW.PV1 of PM2	78.4731
RUI/Gateway MBTCP.RUI/GTW.PV1 of PM3	282.304
RUI/Gateway MBTCP.RUI/GTW.PV1 of PM4	76.0314

Free Manuals Download Website

<http://myh66.com>

<http://usermanuals.us>

<http://www.somanuals.com>

<http://www.4manuals.cc>

<http://www.manual-lib.com>

<http://www.404manual.com>

<http://www.luxmanual.com>

<http://aubethermostatmanual.com>

Golf course search by state

<http://golfingnear.com>

Email search by domain

<http://emailbydomain.com>

Auto manuals search

<http://auto.somanuals.com>

TV manuals search

<http://tv.somanuals.com>