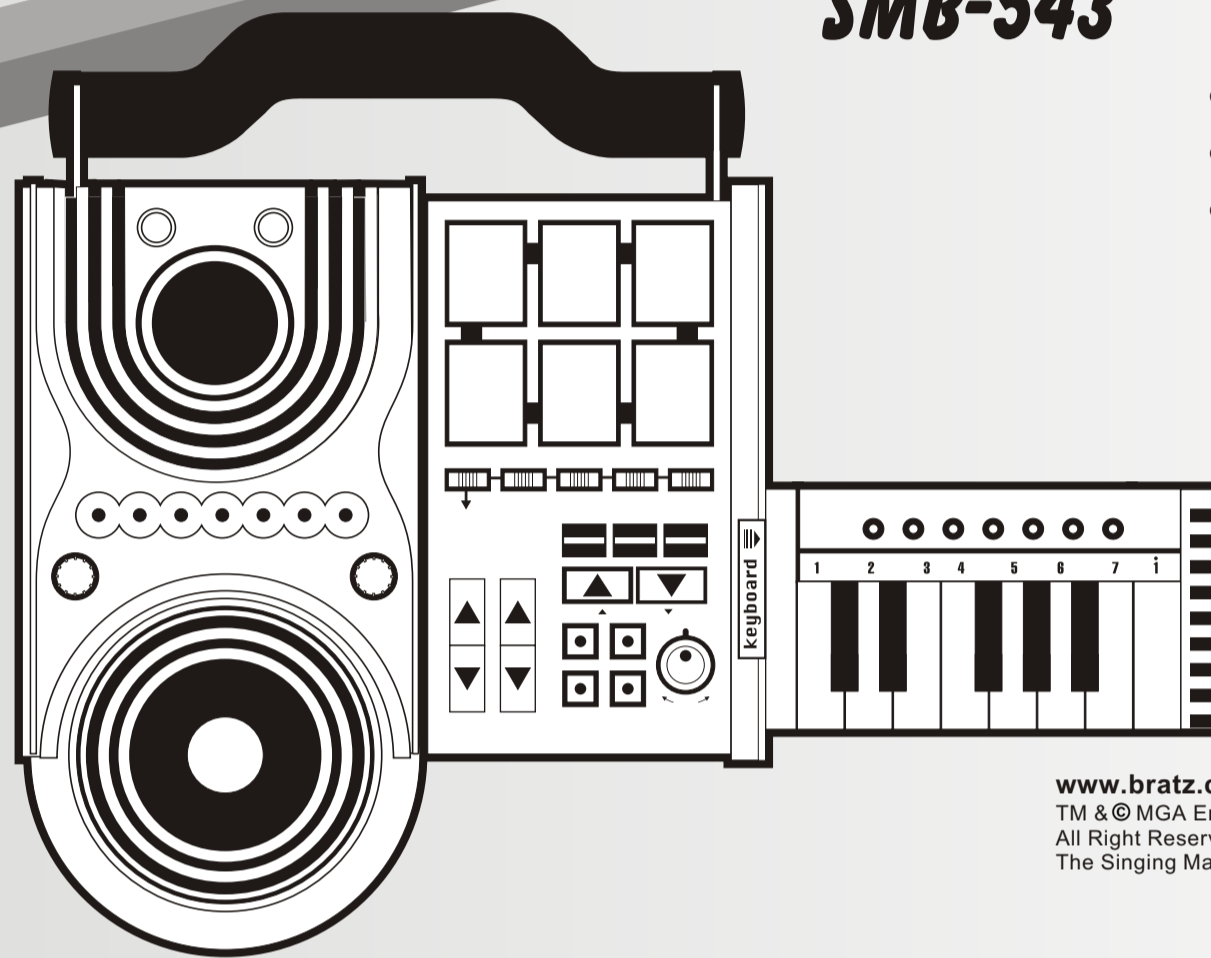




Instruction Manual  
Manual De Instrucción  
Manuel D'instruction

**SMB-543**

- **ELECTRONIC DJ MIXER**
- **TECLADO ELECTRÓNICA DJ MIXER**
- **CLAVIER ELECTRONIQUE MIXER DJ**



www.bratz.com

TM & © MGA Entertainment, Inc.  
All Right Reserved. Used under license by  
The Singing Machine Co., Inc.



The Singing Machine Company, Inc.

543-0704-ENG-SPA-FRE02

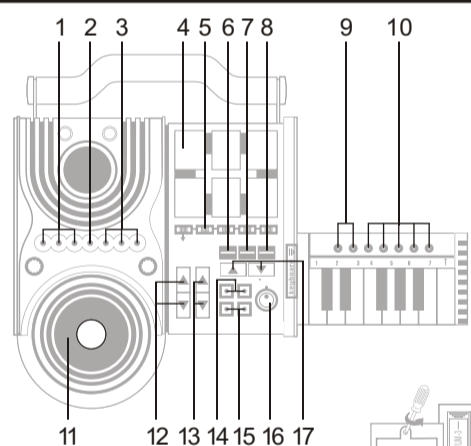
6601 Lyons Road, Bldg. A7, Coconut Creek, FL33073-9902, USA.  
TEL: (954) 596-1000 FAX: (954) 596-2000

OE085WA5511

Please read before using this unit.  
Lea antes de usar esta unidad.  
Veuillez lire avant d'utiliser cet appareil.

**ENGLISH**

**FUNCTION LIST**



1. 21 RHYTHM SELECTION
2. RHYTHM STOP
3. 21 DISC EFFECT SELECTION
4. 6 SOUND EFFECTS
5. 10 EFFECT SELECTIONS
6. RHYTHM EFFECT (DIVIDE)
7. RHYTHM PAUSE
8. RHYTHM PLAY
9. 2 KEYBOARD PATTERNS
10. 10 INSTRUMENT SELECTIONS
11. SCRATCH DISC
12. RHYTHM VOLUME CONTROL
13. SOUND EFFECT VOLUME CONTROL
14. AUX ON / OFF
15. POWER ON / OFF
16. AUX VOLUME CONTROL
17. RHYTHM TEMPO CONTROL

**BATTERY INSTALLATION**

1. Unscrew battery door.
2. Open battery door.
3. Install 6 "AA" batteries.
4. Close battery door and replace screw.

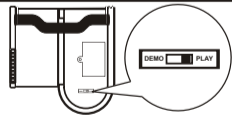
**BATTERY PRECAUTIONS**

The precautions below should be followed when using batteries in this device:

1. Use only the size and type of batteries specified.
2. Be sure to follow the correct polarity when installing the batteries as indicated in the battery compartment. Reversed batteries may cause damage to the device.
3. Do not mix different types of batteries together (e.g. Alkaline and Carbon Zinc) or old batteries with fresh ones.
4. If the device is not to be used for a long period of time, remove the batteries to prevent damage or injury from possible battery leakage.
5. Do not try to recharge batteries not intended to be recharged, they can overheat and rupture (Follow battery manufacturer's directions).
6. Rechargeable batteries are to be removed from the product before being charged.
7. Rechargeable batteries are only to be charged under adult supervision.
8. Exhausted batteries are to be removed from the product.
9. The supply terminals are not to be short-circuited.

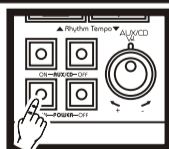
**IMPORTANT!**

Insure the back panel of the Keyboard DJ Mixer is in "PLAY" mode before use. The "DEMO" mode is for demonstration purpose only. Once the "PLAY" mode is activated the system will automatically power "OFF". By pressing any key the power will be activated.



**POWER**

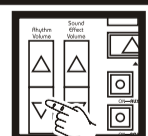
- Power ON:**  
To power up the unit, press the POWER ON key (#15 on the illustration).
- Power OFF:**  
Turn off the unit by pressing the POWER OFF key (#15 on the illustration).



**VOLUME CONTROL**

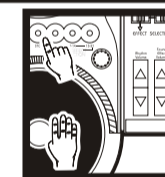
**Rhythm Volume +/- :** You may adjust the Rhythm volume level by pressing this key (#12 on the illustration). The default level is at level #3.

**Sound Effect Volume +/- :** You may adjust the Sound effect volume level by pressing this key (#13 on the illustration). The default level is at level #3.



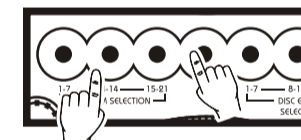
**DISC EFFECT SELECTION**

This Keyboard DJ Mixer allows you to spin the disc backward and forward for different sound effects. There are a total of 21 disc effect selections to choose from. Prior to selecting an effect you are able to listen to a short demo of each by pressing the corresponding #1-7, 8-14 and 15-21.



**RHYTHM SELECTION**

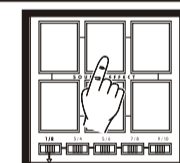
Quick! Select a Background Rhythm suitable to your style. There are a total of 21 rhythms to choose from. The rhythms are suitable as background for the style the player prefers. Press key #1-7, 8-14 or 15-21 to access the available rhythms.



**STOP:** You may stop the rhythm at anytime by pressing the "STOP" key (#2 on the illustration).

**SOUND EFFECT**

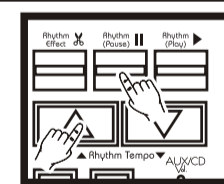
You are able to create your own style of music with your fingertips. There are a total of 10 sets of sound effects. Each set includes 6 pre-recorded effects.



**Effect Selection:** There are 5 keys with 2 pre-recorded sound effects on each (#5 on the illustration).

**RHYTHM CONTROL**

- Rhythm Effect :** The rhythm will be sliced during playback.
- Rhythm Pause :** You can pause the playing rhythm by pressing this key.
- Rhythm Play :** You can continue the music from where it's paused.
- Rhythm Tempo +/- :** You may adjust the rhythm speed by pressing this Key. There are a total of 5 levels, and default at level #3.



**AUX/CD**



**AUX ON/OFF:**  
You may turn on or off the external input by pressing these keys (#14 on the illustration).

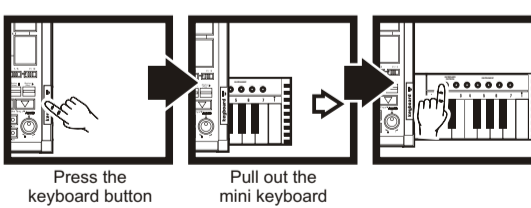
**AUX Volume:**  
You can adjust the external music volume by turning the knob (#16 on the illustration).

Let's plug in the cable from your music player to the DJ MIXER. You can jam into the music with your own effects just like a DISCO DJ.

**NOTE:** Before you plug in or turn on the AUX/CD. Please adjust the volume to minimum. Turn on the AUX/CD and slowly increase the volume.

**KEYBOARD**

A mini keyboard is specially designed for you to create a short fill in music. All instruments are commonly used in Disco DJ remix. Try it now!



**Keyboard Pattern 1/2:**  
Pre-recorded pattern will play at different tones. (#9 on the illustration)

**Instrument Selection 1-10:**  
A total of 5 instrument selection keys to select 10 different instruments. (#10 on the illustration)

VISIT OUR WEBSITE [www.singingmachine.com](http://www.singingmachine.com)

PRINTED IN CHINA

## Free Manuals Download Website

<http://myh66.com>

<http://usermanuals.us>

<http://www.somanuals.com>

<http://www.4manuals.cc>

<http://www.manual-lib.com>

<http://www.404manual.com>

<http://www.luxmanual.com>

<http://aubethermostatmanual.com>

Golf course search by state

<http://golfingnear.com>

Email search by domain

<http://emailbydomain.com>

Auto manuals search

<http://auto.somanuals.com>

TV manuals search

<http://tv.somanuals.com>