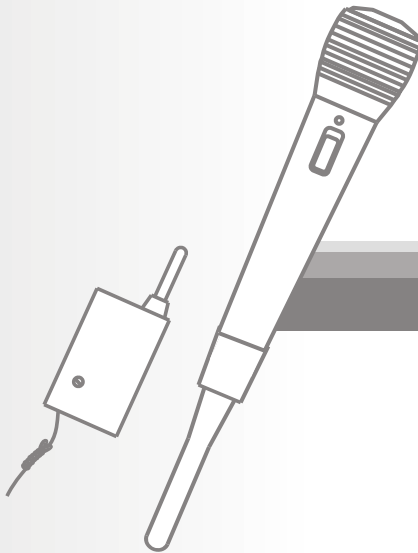


SMM-106

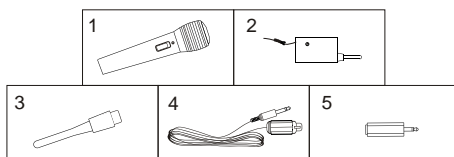
- WIRELESS MICROPHONE

Please read before using this unit.



Contents

1. Wireless Microphone x 1
2. Microphone Receiver x 1
3. Microphone Antenna x 1
4. Microphone Cord with Cannon Jack and 6.3 mm Jack x 1
5. 3.5 mm Jack adapter x 1



Congratulations on your purchase of a Singing Machine SMM-106 Wireless Microphone! We at the Singing Machine know that it will provide you and your friends with endless hours of entertainment. Inside you will find instructions on how to use and maintain your SMM-106.

In the unlikely event that you will be using your SMM-106 Singing Machine Wireless Microphone in an area of high radio frequency interference, you may need to temporarily make use of the non-wireless option by attaching it to the included microphone cord.

Microphone Details

Settings

The switch on your Singing Machine SMM-106 Wireless Microphone has three settings:

1. ON - The switch is in the top position. For wireless use, the microphone will function. The red indicator light is on. The microphone will use battery power.
2. MIC - The switch is in the middle position. For non-wireless use, the microphone will function. If the battery is removed from the microphone, the red indicator light will not be turned on.
3. OFF - The switch is in the bottom position. The microphone will not function. The red indicator light is off. The microphone will not use battery power.

Important Note: When the microphone switch is set to OFF, noise may be generated from the karaoke machine. Please make sure to reduce both the MASTER VOLUME and MIC VOLUME to the low level OR switch off the receiver before turning off your microphone.

Instructions For Wireless Use

1. Insert one (1) **AA battery** into the **Microphone** by unscrewing the bottom.
2. Plug the **Antenna** into the bottom of the **Microphone**.
3. Insert one (1) **AA battery** into the slot located in the back of the **Receiver**.
4. Set the switch on the **Microphone** to the middle MIC position.
5. Plug the **Receiver** into the **Microphone Input Jack** of your Singing Machine karaoke machine.
6. Set the switch on your Singing Machine karaoke machine to the ON position.
7. Set the switch on the **Receiver** to the ON position.
8. Set the switch on the **Microphone** to the top ON position.

Your Singing Machine SMM-106 Wireless Microphone is now ready for wireless use!

NOTE: If you encounter minor interference during wireless use, please adjust the tuning screw on the **Receiver**, and roll up the plastic **Receiver Antenna**. Excessive interference will require temporary non-wireless use.

Instructions For Non-Wireless Use

1. Plug **Cannon Jack** into the **Microphone** instead of the **Antenna**, making sure that the three holes line up with the three prongs in the base of the **Microphone**.
2. Plug the **Microphone Cord** into the **Microphone Input Jack** of your Singing Machine karaoke machine.
3. Set the switch on your Singing Machine karaoke machine to the ON position.
4. Set the switch on the **Microphone** to the **MIC** position.

Your Singing Machine SMM-106 Wireless Microphone is now ready for non-wireless use!

NOTE: For best non-wireless performance, please remove batteries from the Microphone prior to non-wireless use.

Maintenance

- To ensure long battery life, please make sure that both the Receiver and the Microphone are set to the OFF position when not in use. To be absolutely certain, we advise you to remove the AA batteries from both the Receiver and the Microphone when they are not in use.
- Please remove the Receiver from the Microphone Input Jack of your Singing Machine karaoke machine when not in use. This will reduce the possibility of damage to the Receiver.

Troubleshooting

1.PROBLEM: The Microphone indicator light is on, but there is no sound when I sing.

- Is the Microphone switch set to ON?
- Is the Singing Machine karaoke machine correctly plugged in and switched on?
- Are the Microphone Volume and Master Volume controls of your Singing Machine set to a high enough level?
- Does the Receiver contain one (1) AA battery, is it properly connected to your Singing Machine, and is it turned on?

2.PROBLEM: The Receiver indicator light is on, but there is no sound when I sing.

- Is the Receiver properly connected to the Singing Machine?
- Is the Microphone switch set to ON?
- Does the Microphone contain one (1) AA battery?
- Is the Singing Machine karaoke machine correctly plugged in and switched on?
- Are the Microphone Volume and Master Volume controls of the Singing Machine karaoke machine set to a high enough level?

3.PROBLEM: The Singing Machine karaoke machine I am using is switched on, but there is no sound when I sing.

- Is the Microphone switch set to ON?
- Does the Microphone contain one (1) AA battery?
- Are the Microphone Volume and Master Volume controls of your Singing Machine set to a high enough level?
- Does the Receiver contain one (1) AA battery, is it properly connected to your Singing Machine, and is it turned on?

CAUTION: Two of same microphone should not be used in same location unless with one wireless and one wired microphone.

Please call Customer Service at (866) 670-6888 if the Troubleshooting Guide information does not correct your problem.

Servicing of a Singing Machine by an unauthorized repair facility will void your warranty. The Singing Machine cannot guarantee future repairs on machines that have been tampered with by unauthorized personnel.

This device complies with Part 15 of the FCC Rules. Operation is subject to the following two conditions:

- (1) this device may not cause harmful interference, and
- (2) this device must accept any interference received, including interference that may cause undesired operation.

The term "IC:" before the radio certification number only signifies that Industry Canada technical specifications were met.

Warning: Changes or modifications to this unit not expressly approved by the party responsible for compliance could void the user's authority to operate the equipment.

The Singing Machine Company, Inc.

106-0307-ENG-SPA-FRE02

6601 Lyons Road, Bldg. A7, Coconut Creek, FL33073-9902, USA.
TEL: (954) 596-1000 FAX: (954) 596-2000

PRINTED IN CHINA

VISIT OUR WEBSITE www.singingmachine.com

Free Manuals Download Website

<http://myh66.com>

<http://usermanuals.us>

<http://www.somanuals.com>

<http://www.4manuals.cc>

<http://www.manual-lib.com>

<http://www.404manual.com>

<http://www.luxmanual.com>

<http://aubethermostatmanual.com>

Golf course search by state

<http://golfingnear.com>

Email search by domain

<http://emailbydomain.com>

Auto manuals search

<http://auto.somanuals.com>

TV manuals search

<http://tv.somanuals.com>