

DOMKE®



Buy it once,
use it for a lifetime.

TIFFEN®
Helping Create the
World's Greatest Images

The Tiffen Company, 90 Oser Avenue, Hauppauge, NY 11788
631-273-2500 • 1-800-645-2822 • www.tiffen.com

Tiffen Europe Ltd, Enterprise House, Weston Business Park, Weston on the Green, Oxon OX25 5SX
Phone: +44 (0) 1869 343 835 - Fax: +44 (0) 1869 343 836 - www.tiffen-europe.com

0908



DOMKE®



DOMKE®

Your Domke. Your Way

Download from www.Somanuals.com. All Manuals Search And Download.

DOMKE®

Jim Domke
Inventor of the Original
F-2 Shooter's Bag™



THE CHOICE OF WORKING PROFESSIONALS FOR OVER THIRTY YEARS.

Jim Domke and The Shooter's Bag™ Story

"I designed my first shooter's bag to solve a problem, without a thought that I might actually end up in the photo bag business. As a staffer at the Philadelphia Inquirer, I needed a bag I could work out of fast, and on the run if need be. Most bags are designed more like carrying cases or storage devices, with way too much bulk and padding. This is not only unnecessary, but takes away utility, speed and capacity.

The bag I created had the necessary cushioning, yet tons more room. It was designed so that I could get at my equipment instantly, without having to take the bag from my shoulder.

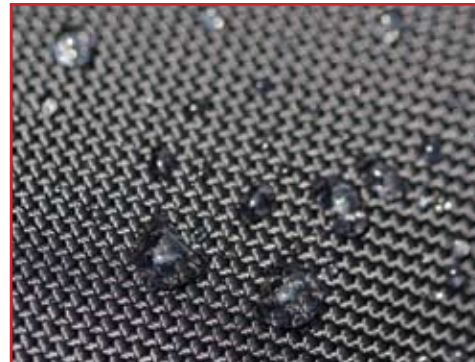
My colleagues liked my ideas and so did thousands of other photographers. What started as a kitchen table experiment is now a line of intelligently designed and executed bags and accessories that are recognized throughout the world as the photojournalist's choice."



Canvas, for a classic look and feel:

If your tastes lean towards the traditional and understated, then all-natural canvas is probably for you. Soft, supple, heavyweight cotton canvas molds around its contents, hugs your body, and has a smooth texture that's friendly to both equipment and clothing. The fabric is naturally water-resistant, and

we add a repellent treatment in the dyeing process for an extra measure of protection. Still, canvas is a "breathable" fabric, so the air in your Domke Bag stays dry even in the most humid environments. Canvas also helps prevent static electricity, a benefit when working with electronic equipment. Finally, canvas has a character all its own; as your Domke Bag ages, it softens and wears like a favorite pair of jeans. And new or old, a canvas Domke is the ultimate in discretion - the bag that doesn't shout "Expensive Camera Equipment Inside!"



Or Ballistic Nylon, for a more "high- tech" approach:

If you prefer a nylon bag, we also use super-tough 1050 Denier Ballistic Nylon. It is a water-resistant fabric used in everything from expensive luggage to bullet-proof vest exteriors. It has a more pronounced texture than canvas, and features a beefy, weatherproof urethane coating. Tough-

as-nails Ballistic Nylon keeps its shape and sheen even after years of hard use, yet when incorporated into the flexible Domke design, is still soft and hip-hugging. Our Ballistic Nylon bags are a great alternative for those who want classic Domke performance but prefer a different look to canvas.



Tough, street-test-ed hardware and YKK zippers:

When it comes to keeping it all together, we use only the strongest buckles, adjusters, rings and clips. Most of our bags feature “bomb-proof” steel snaphooks with welded steel rings — the most pilfer-proof closure short of a padlock — and other elements of composite hardware made of DuPont Delrin®.



The Gripper™. Domke’s original non-slip shoulder strap:

We custom-weave twin tracks of high-friction rubber into some of the thickest, toughest cotton webbing on earth. The result is The Gripper Strap — the strap that stays on the shoulder to keep your bag where it needs to be. It also surrounds the bottom of the bag for maximum security and end-to-end support.

Capacity

Need to squeeze one more item into your bag? Domke bags are built to do just that. The canvas combined with adjustable closures allow you to easily close even the most overstuffed bag



The patented Padded Insert System

The heart of a Domke Shooter’s Bag: Another Domke exclusive, the Padded Insert System organizes and protects your gear with less fuss... and a lot less bulk. Interchangeable, compartmentalized inserts let you custom-tailor your Domke bag to suit any application or equipment combination. And unlike the flat walls, hatches, floors and bridges you find in other bags, these inserts are complete, self-contained storage components. Which means you can move — or remove — any Domke insert without having to empty it first!



Official Bag of The White House News Photographers Association



Domke is the proud sponsor of the White House News Photographers Association.



DOMKE®

Table of Contents

Classic Bags 8 - 19

F-1X Little Bit Bigger	9
F-2 Domke's Original Bag	10
F-3X Super Compact	11
F-4AF Pro System Bag	12
F-5X Shoulder Bag Series	14 - 15
F-6 Little Bit Smaller	16
F-7 Domke AF Bag	17
F-8 Small Shoulder Bag	18
F-9 and F-10 JD Shoulder Bags	19

Backpacks 20 - 21

F-2 Backpack	21
F-3 Backpack	21

Satchels 22 - 23

F-802 Reporter's Satchel, F-803 Camera Satchel	22
F-804 Super Satchel, F-808 Messenger Bag	23

J-Series Bags 24 - 27

J-1 Journalist Series	24
J2, J3 Journalist Series	25
J5XA, J5XB Series Shoulder Bags	26
J5XC Series Shoulder Bag, J-803 Digital Satchel	27

Accessory Bags 28 - 31

F-427, F-432, F-440 Tripod Bags	28 - 29
F-612 Long Lens Bag	30
F-505 Series Lens Cases	31

Padded Inserts 32 - 37

1-Compartment Mini & Standard	32
1-Compartment Large, Short & 2-Compartment	33
2-Compartment Short, 3-Compartment & 3 Comp. Combo	34
4-Compartment Standard, Digital Wide Angle & Short	35
Digital SLR Insert, J-Series Insert, Bottom Boards	36
Insert Chart	37

Add-On Pouches 38 - 39

Belt, Compact & Super Pouch	38
F-903 Series Pouches	39

Accessories 40 - 43

Protective Wraps, Assorted Straps, Super Handle	40 - 41
Belts, USPO Shoulder Pad, X-Ray Guard, Dri-Safe, Cap	42 - 43

Vests & Jackets 44 - 45

Vests, Jackets	44 - 45
----------------	---------

Customize It! 46 - 47

Customize Your Domke Bag	46 - 47
--------------------------	---------

DOMKE®

Classic Bags

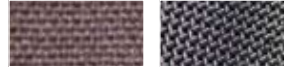
Domke shoulder bags are unlike other bags because of their flexible design and lack of bulk. There are no thick walls and heavy foam or space wasting padding in a Domke bag. This means you can fit more equipment in less space and the bag hugs your hips instead of bouncing against them.



All Domke Classic Bags Available In These 3 Colors



Some available in Brown Canvas & Black Ballistic Nylon



The icons you see below are used throughout this brochure.



Water-resistant



Made in USA



Machine Washable



YKK® Zipper



Airline Storage

F-1X Little Bit Bigger

Capacity – 2 Pro SLRs, 3-5 zoom lenses, 2 strobes, small tripod and accessories.

Just “a little bit bigger” than the original Domke F-2, this large pro-quality shoulder bag is perfect for when you require extra equipment. Includes an adjustable non-slip Gripper™ Strap with durable cotton webbing, removable bottom board, removable four point carrying strap, YKK Zippers, and steel snap hooks.



700-10B – Black Canvas
 700-10S – Sand Canvas
 700-10D – Olive Canvas
 700-F1B – Black Ballistic Nylon (not machine washable)

Facts and Figures:

- Size (Exterior) – 19.5” W x 8” D x 9” H
- Size (Interior) – 15.5” W x 6.5” D x 8.5” H
- Weight – 4 lbs. 11 oz.
- 9 Pockets
- Includes 1 Padded 4-Compartment Standard Insert
- Additional inserts available



F-2 Domke's Original Bag

Capacity – 2 Pro SLRs, 4-6 lenses, pro flash and accessories.

The bag that started it all. Jim Domke had the first one custom made for his own use in 1976, and it's still one of the most popular Domke bags today. Designed so that the photographer could get at equipment instantly, without having to take the bag from their shoulder. Includes an adjustable non-slip Gripper™ Strap with durable cotton webbing, removable bottom stiffener, removable hand carrying strap, YKK Zippers, and steel snap hooks.

- 700-02B – Black Canvas
- 700-02S – Sand Canvas
- 700-02D – Olive Canvas
- 700-02W – Brown Canvas
- 700-F2B – Black Ballistic Nylon (not machine washable)



Facts and Figures:

- Size (Exterior) – 17" W x 6.75" D x 9" H
- Size (Interior) – 11" W x 6.5" D x 8.5" H
- Weight – 3 lbs. 2 oz.
- 6 Pockets
- Includes 1 Padded 4-Compartment Standard Insert
- Additional inserts available



F-3X Super Compact

Capacity – 1 Pro SLRs, 2-3 lenses, pro flash and accessories.

Resized to fit today's digital SLR's, but still deceptively compact, this is the bag to grab when the assignment doesn't call for dozens of pieces of equipment. No space is wasted, because the inside and outside dimensions are nearly identical. The result is a very inconspicuous camera bag that carries a surprising amount of gear. Includes removable padded partition wall, adjustable non-slip Gripper™ Strap with durable cotton webbing, removable hand carrying strap, YKK Zippers, and steel snap hook.

- 700-30B – Black Canvas
- 700-30S – Sand Canvas
- 700-30D – Olive Canvas
- 700-30W – Brown Canvas
- 700-F3B – Black Ballistic Nylon (not machine washable)



Facts and Figures:

- Size (Exterior) – 15" W x 7" D x 9" H
- Size (Interior) – 9.5" W x 6" D x 9" H
- Weight – 2 lbs. 4 oz.
- 5 Pockets



F-4AF Pro System Bag

Capacity – 1 Pro SLRs with zoom lens mounted, 1-2 lenses, flash and accessories.

Today's professional digital SLR bodies are larger than ever. Twist on a state-of-the-art zoom lens, and you've got a formidable piece of equipment that can challenge any compact camera bag. The F-4AF is a great working camera bag for light assignments. It combines the right amount of protection with easy access to your equipment. Includes an adjustable non-slip Gripper™ Strap, removable hand carrying strap, YKK zipper, and steel snap hook.



Facts and Figures:

- Size (Exterior) – 13" W x 8.5" D x 11" H
- Size (Interior) – 8.5" W x 7" D x 9.5" H
- Weight – 2 lbs. 7 oz.
- Includes 1 padded 2-compartment insert and 1 large single compartment insert
- Additional inserts available



700-40B – Black Canvas
700-40S – Sand Canvas
700-40D – Olive Canvas

DOMKE® Testimonials



"Jim Domke took his knowledge as a working photojournalist and the knowledge of his fellow photojournalists to come up with the original Domke Bag. The folks at Domke have carried on the tradition of listening to working photojournalists and producing bags and equipment that Photojournalists' need. Domke products have adapted to meet the needs of still photographers and now video journalists. At the White House I see Domke bags everywhere—it is the favorite "run bag" for television sound men and women in Washington."

"I'm packing gear for an assignment right now and see an assortment of Domke bags for lenses, light stands, cameras, even my computer, that will make my journey more comfortable and insure my equipment will work when I arrive. I never leave home without them."

– **Dennis Brack** President, The White House News Photographers Association

"Approaching my 25th year working for and with the best photojournalists in the world, we have been witness to history, and Domke has shared a front row seat along the way. From the rope lines at the White House to the Oval office, to the attacks on the Pentagon and World Trade Center Towers, to the Olympics Opening Day, from Inauguration Day to Iraq, the quality and reliability of Domke gear is guaranteed to be the first choice of members of The White House News Photographers Association."

– **Heidi Elswick** Director, The White House News Photographers Association

"The trademark of a seasoned photojournalist is the well worn Domke bag hanging from their shoulder. I felt such a swell of pride and accomplishment when I got my first soft black canvas Domke bag. I couldn't wait to break it in so it would resemble the trademark look of the seasoned photojournalists I knew."

"After many years, many countries and many photo stories, my bag now has sculpted itself to my body and has the well used look I always envied. Just like a quality Leica body or a pair of dusty field boots, a trusty Domke is essential to a photojournalist's repertoire."

– **Jamie Rose** Secretary of the Board, The White House News Photographers Association

F-5X Shoulder Bag Series

Lightweight, versatile and comfortable shoulder bags that allow for easy access. They are a camera bag that doesn't attract attention to the expensive equipment inside.



F-5XA Compact Shoulder & Belt Bag

Compact shoulder bag that's great for day trips when you're just carrying a body, lens and a few accessories. The F-5XA can be used as a shoulder bag or remove the strap and wear it as a hip pack. Includes 1 movable divider, adjustable and removable non-slip Gripper™ Strap, YKK zipper and belt loop.



Facts and Figures:

- Size (Exterior)
8" W x 4.5" D x 7.25" H
- Size (Interior)
7.5" W x 4" D x 6" H
- Weight – 1 lb. 1 oz.
- 2 Pockets

700-51B – Black Canvas
700-51S – Sand Canvas
700-51D – Olive Canvas

F-5XB Shoulder & Belt Bag

The original Domke belt bag is a truly versatile hip-hugger. Used as either a shoulder bag or belt bag it fits a digital SLR with an extra flash or lens, plus accessories. Includes 2 dividers, adjustable and removable non-slip Gripper™ Strap, YKK zipper and belt loop.



Facts and Figures:

- Size (Exterior)
10" W x 4.5" D x 7.25" H
- Size (Interior)
9.5" W x 4" D x 6" H
- Weight – 1lb 4oz
- 1 Pocket

700-52B – Black Canvas
700-52S – Sand Canvas
700-52D – Olive Canvas
700-52W – Brown Canvas



F-5XC Large Shoulder Bag

Large shoulder bag that fits a digital SLR with an extra flash and lens or 2 lenses, plus accessories. The main compartment is easily accessible from either the top or bottom of the bag to prevent items from getting lost in the bottom. Includes 2 divider, adjustable and removable non-slip Gripper™ Strap and YKK zipper.



Facts and Figures:

- Size (Exterior)
10" W x 4.5" D x 10.75" H
- Size (Interior)
9.75" W x 4" D x 9.25" H
- Weight – 1 lb. 11 oz.
- 3 Pockets

700-53B – Black Canvas
700-53S – Sand Canvas
700-53D – Olive Canvas



F-6 Little Bit Smaller

Capacity – 1 Pro SLR, 2-3 lenses, and accessories.

Similar to the F-2 Original Bag, but scaled down for times when you don't need to carry everything. The F-6's size and design makes it easy to carry and just as discreet as any Domke bag. Includes an adjustable non-slip Gripper™ Strap with durable cotton webbing, removable hand carrying strap, YKK Zippers, and steel snap hooks.



700-60B – Black Canvas
700-60S – Sand Canvas
700-60D – Olive Canvas
700-F6B – Black Ballistic Nylon (not machine washable)

Facts and Figures:

- Size (Exterior) – 11.5" W x 7" D x 7.5" H
- Size (Interior) – 11.25" W x 5.5" D x 7" H
- Weight – 1 lb. 13 oz.
- 3 Pockets
- Includes 1 padded 4-compartment insert
- Additional inserts available



F-7 Domke AF Bag

Capacity – 2 Pro SLR, 4-6 lenses and/or flashes, and accessories.

Built to carry two complete professional setups, the F-7 has room for two pro SLRs and an adjustable belt system works with the shoulder strap to keep even a fully-loaded bag snug against your hip. The perfect photojournalist's bag when you need to bring it all with you. Includes an adjustable non-slip Gripper™ Strap with durable cotton webbing, removable bottom stiffener, removable hand carrying strap, YKK Zippers, and steel snap hooks.



700-70B – Black Canvas
700-70S – Sand Canvas

Facts and Figures:

- Size (Exterior) – 19" W x 7" D x 11.25" H
- Size (Interior) – 14.5" W x 6" D x 10" H
- Weight – 4 lbs. 14 oz.
- 8 Pockets
- Includes 2 large single compartment inserts and one 2-compartment insert
- Additional inserts available



F-8 Small Shoulder Bag

Capacity – 1 digital SLR with short lens and accessories.

Designed to look like the popular Domke F-3 bag, but smaller. The F-8 is padded and intended to hold a basic SLR camera with a small lens attached. There is also room for accessories and plenty of pockets to carry what you need for a day out. Includes 2 dividers, adjustable and removable non-slip Gripper™ Strap, and YKK zipper.



700-80B – Black Canvas
700-80S – Sand Canvas
700-80D – Olive Canvas

Facts and Figures:

- Size (Exterior) – 9" W x 5.25" D x 7" H
- Size (Interior) – 6.5" W x 3.5" D x 6.5" H
- Weight – 1 lb. 7 oz.
- 5 Pockets



JD Shoulder Bags

These lightweight shoulder bags are great when you're traveling light. The padded interior has a soft tricot lining to protect your gear and a large front zippered pocket that could hold a point and shoot camera, MP3 player or cell phone, plus accessories. Includes an adjustable non-slip Gripper™ Strap, removable hand carrying strap, top carry handle, steel snap hooks and YKK zipper.

F-9 JD Short Shoulder Bag

Capacity – Compact Digital SLR with short lens and accessories.

700-90B – Black Canvas
700-90S – Sand Canvas
700-90D – Olive Canvas



Facts and Figures:

- Size (Exterior) 8.75" W x 6" D x 9" H
- Size (Interior) 7" W x 3" D x 7.5" H
- Weight – 1 lb. 5 oz.
- 3 Pockets
- Includes 1 movable divider

F-10 JD Medium Shoulder Bag

Capacity – Compact Digital SLR with lens mounted, extra lens and accessories.

700-00B – Black Canvas
700-00S – Sand Canvas
700-00D – Olive Canvas



Facts and Figures:

- Size (Exterior) 11.5" W x 6" D x 9" H
- Size (Interior) 9" W x 3" D x 7" H
- Weight – 1 lb. 9 oz.
- 3 Pockets
- Includes 2 movable dividers



DOMKE® Backpacks

Two of Domke's most popular bags, the F-2 Original Bag and F-3X Compact bag are now available as a backpack. The bottom of the bag is configured exactly like the F-2 and F-3X for camera gear and extra room at the top for accessories or personal items. Keeping with the Domke look and style, we've used the familiar Domke cotton canvas, cotton webbing, large pockets, YKK zippers, and metal hardware. A comfortable foam padded harness with waist and sternum strap helps distribute the weight for comfortable carrying.



F-2 Backpack

**Capacity – 2 Pro SLRs,
4-6 lenses, pro flash
and accessories.**

Facts and Figures:

- Size (Exterior)
17.5" W x 7" D x 17" H
- Size (Interior Top)
13" W x 6" D x 7.5" H
- Size (Interior Bottom)
13" W x 6" D x 8" H
- Weight – 3 lbs. 13 oz.
- 6 Pockets

702-02B – Black Canvas
702-02S – Sand Canvas
702-02D – Olive Canvas



F-3 Backpack

**Capacity – 1 Pro SLR,
2-3 lenses, pro flash
and accessories.**

Facts and Figures:

- Size (Exterior)
12" W x 6.25" D x 16" H
- Size (Interior Top)
9.5" W x 5.75" D x 7" H
- Size (Interior Bottom)
11" W x 5.75" D x 9" H
- Weight – 3 lbs. 8 oz.
- 4 Pockets

702-30B – Black Canvas
702-30S – Sand Canvas
702-30D – Olive Canvas



DOMKE® Satchels

F-802 Reporter's Satchel

Capacity – Fits up to a 15.4" laptop, books, paperwork, photo accessories and documents

With a flexible main compartment and large pockets, this versatile bag can be a briefcase, camera bag or laptop bag. Includes an adjustable non-slip Gripper™ Strap, YKK zippers, and steel snap hooks.

701-82B – Black Canvas
701-82S – Sand Canvas
701-82D – Olive Canvas



Facts and Figures:

- Size (Exterior)
15.5" W x 5" D x 13" H
- Size (Interior)
14.5" W x 3" D x 12" H
- Weight – 2 lbs. 7oz.
- 5 Pockets



F-803 Camera Satchel

Capacity – 1 Pro SLR plus a lens and accessories

The smallest of the Domke Satchels, it's compact and great for holding camera equipment and also the perfect size as a light briefcase for business travel. Includes an adjustable non-slip Gripper™ Strap, YKK zippers, and steel snap hooks.

701-83B – Black Canvas
701-83S – Sand Canvas
701-83D – Olive Canvas



Facts and Figures:

- Size (Exterior)
13.5" W x 3.5" D x 10" H
- Size (Interior)
12" W x 3" D x 9" H
- Weight – 1 lb. 15 oz.
- 5 Pockets

F-804 Super Satchel

Capacity – 2 Pro SLR's, 2 lenses and accessories

Big and versatile, this bag is perfect if you want to carry a camera bags worth of gear in a briefcase format. It's a great bag to use as a second carry on with airlines that only allow "one carry on and one personal item". Includes an adjustable non-slip Gripper™ Strap, YKK zippers, and steel snap hooks.

701-84B – Black Canvas



Facts and Figures:

- Size (Exterior)
15.25" W x 8" D x 13" H
- Size (Interior)
14" W x 6.5" D x 10" H
- Weight – 3 lbs. 14 oz
- 6 Pockets



F-808 Messenger Bag

Capacity – 1 SLR body and 1 lens or up to a 15" laptop and accessories

Durable and water-resistant this bag can carry either camera equipment or a small laptop. It has plenty of space for pens, papers, small electronics such as cell phones or PDAs and business cards. Includes an adjustable non-slip Gripper™ Strap, YKK zippers, key ring attachment and steel snap hooks.

701-88B – Black Canvas
701-88S – Sand Canvas
701-88D – Olive Canvas



Facts and Figures:

- Size (Exterior)
12.25" W x 6" D x 14.5" H
- Size (Interior)
11" W x 5.5" D x 13" H
- Weight – 2 lbs. 8 oz.
- 4 Pockets

DOMKE®

J-Series Camera Bags

Journalist Series

Similar to our most popular Shooter's Bags but with a few extra touches, such as a more versatile padded insert system that allows dividers to be positioned anywhere, and super-tough, water-resistant 1050 Ballistic Nylon. The Journalist Series bags feature the same street-tough hardware as their canvas counterparts as well as the original cotton web non-slip Gripper™ Strap.



**All J-Series Bags available
in Black Ballistic Nylon**



J-1

Capacity - 2 Pro SLRs, 3-5 zoom lenses, 2 strobes, small tripod and accessories.

The largest of the Journalist series, it can hold a large diverse assortment of camera gear.



700-J1B – Black Ballistic Nylon

Facts and Figures:

- Size (Exterior)
19.5" W x 8" D x 11.5" H
- Size (Interior)
14" W x 7" D x 11" H
- Weight – 4 lbs. 2 oz.
- 5 Pockets
- Includes 1 Padded Insert with adjustable padded dividers, 2 padded removable pocket inserts and removable bottom board

J-2

Capacity - 2 Pro SLRs, 4-6 lenses, pro flash and accessories

Similar to the J-1 in form and function, the J-2 is slightly smaller in length and height to accommodate a little less gear.



700-J2B – Black Ballistic Nylon

Facts and Figures:

- Size (Exterior)
17" W x 7.5" D x 10.5" H
- Size (Interior)
12.5" W x 6.25" D x 8.25" H
- Weight – 3 lbs. 8 oz.
- 5 Pockets
- Includes 1 Padded Insert with adjustable padded dividers, 2 padded removable pocket inserts and removable bottom board

J-3

Capacity – Pro SLR, 2-3 lenses, pro flash and accessories.

Surprisingly roomy for its size this compact bag carries more equipment than you would expect.



700-J3B – Black Ballistic Nylon

Facts and Figures:

- Size (Exterior)
14" W x 8" D x 9.5" H
- Size (Interior)
8" W x 6" D x 9.5" H
- Weight – 2 lbs. 12 oz.
- 4 Pockets
- Divider, 2 padded removable pocket inserts

J-5X Series Shoulder Bags

The Domke J-5X series is designed after the popular Domke F-5 series, but now available in "tough-as-nails" ballistic nylon. Lightweight and versatile, these bags are great for those who like the design of the canvas bags, but are looking for the nylon look and feel.



All J-Series Bags available
in Black Ballistic Nylon

J-5XA Compact Shoulder Bag

Compact shoulder bag that's great for day trips when you're just carrying a body, lens and a few accessories. The J-5XA can be used as a shoulder bag or remove the strap and wear as a hip pack. Includes 1 movable divider, adjustable and removable non-slip Gripper™ Strap, YKK zipper and belt loop.

Facts and Figures:

- Size (Exterior)
8" W x 4.5" D x 7.25" H
- Size (Interior)
7.5" W x 4" D x 6" H
- Weight – 1 lb. 1 oz.
- 2 Pockets

700-J5A – Black Ballistic Nylon

J-5XB Medium Shoulder Bag

Modeled after the original Domke belt bag, the J-5XB can be used as either a shoulder bag or belt bag. It fits a digital SLR with an extra flash or lens, plus accessories. Includes 2 dividers, adjustable and removable non-slip Gripper™ Strap, YKK zipper and belt loop.



700-J5B – Black Ballistic Nylon

Facts and Figures:

- Size (Exterior)
10" W x 4.5" D x 7.25" H
- Size (Interior)
9.5" W x 4" D x 6" H
- Weight – 1 lb. 4oz.
- 1 Pocket

J-5XC Large Shoulder Bag

Large shoulder bag that fits a digital SLR with an extra flash and lens or 2 lenses, plus accessories. The main compartment is easily accessible from either the top or bottom of the bag to prevent items from getting lost in the bottom. Includes 2 dividers, adjustable and removable non-slip Gripper™ Strap and YKK zipper.



700-J5C – Black Ballistic Nylon

Facts and Figures:

- Size (Exterior)
10" W x 4.5" D x 10.75" H
- Size (Interior)
9.75" W x 4" D x 9.25" H
- Weight – 1 lb. 11 oz.
- 3 Pockets

J-803 Digital Satchel

Capacity – 1 Pro SLR plus a lens and accessories

The smallest of the Domke satchels and similar to the F-803, this bag is perfect for photographers who don't want to call attention to their expensive equipment. Includes an adjustable non-slip Gripper™ Strap, YKK zippers, and steel snap hooks.



701-J83 – Black Ballistic Nylon

Facts and Figures:

- Size (Exterior)
14" W x 4" D x 10" H
- Size (Interior)
12.5" W x 3" D x 9.5" H
- Weight – 2 lbs.
- 7 Pockets

DOMKE®

Accessory Bags



Tripod Bags

Unpadded bag designed to carry even the bulkiest professional tripod with balance and grace. Adjustable shoulder strap is positioned to keep the tripod head up, making it easy to carry and control. All models have double-pull zippers, 40-inch bag has an inside pouch for detachable tripod head and handles.

F-427 – 27” long

Facts and Figures:

- Size (Exterior) – 27” long x 19.5” at the top and 15.5” at bottom
- Size (Interior) – 26.5” long x 19” at the top and 15” at the bottom
- Weight – 14 oz.

709-427 – Black Canvas
709-427D – Olive Canvas



F-432 – 32” long

Facts and Figures:

- Size (Exterior) – 32” long x 19.5” at the top and 15.5” at bottom
- Size (Interior) – 31.5” long x 19” at the top and 15” at the bottom
- Weight – 15 oz.

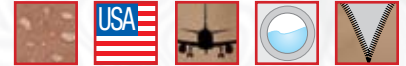
709-432 – Black Canvas
709-432D – Olive Canvas

F-440 – 40” long

Facts and Figures:

- Size (Exterior) – 40” long x 19.5” at the top and 15.5” at bottom
- Size (Interior) – 39.5” long x 19” at the top and 15” at the bottom
- Weight – 1 lb. 2 oz.

709-440 – Black Canvas
709-440D – Olive Canvas



F-612 Long Lens Bag

300mm lenses are so big they need a bag of their own. Domke's unique Long Lens Bag enables you to carry these lenses with the camera body attached. A forty-five degree zip-open flap allows for quick easy access to a fully padded and lined main compartment. Includes a large front pocket, adjustable non-slip Gripper™ Strap, YKK zippers, and adjustable loops on the side to hold a monopod.



706-612 – Black Canvas



Facts and Figures:

- Size (Exterior) - 7.5" W x 9" D x 14" H
- Size (Interior) - 6.5" W x 7" D x 13.5" H
- Weight – 1 lb. 8 oz.



Lens Cases

4 sizes to fit most of today's lenses. Lightweight but built tough to protect your lens. Includes padded interior, shoulder strap, belt loop, dual zipper, hook & loop closure, durable water-resistant canvas and YKK zippers.

705-501 – Black Canvas
705-502 – Black Canvas
705-503 – Black Canvas
705-504 – Black Canvas

F-505 Compact Lens Case

- Size (Interior) – 3.5" H x 3" Diameter
 - Weight – 4 oz.
- 710-501

F-505 Small Lens Case

- Size (Interior) – 5" H x 3.5" Diameter
 - Weight – 6 oz.
- 710-502

F-505 Medium Lens Case

- Size (Interior) – 7" H x 4" Diameter
 - Weight – 9 oz.
- 710-503

F-505 Large Lens Case

- Size (Interior) – 10" H x 5" Diameter
 - Weight – 14 oz.
- 710-501



DOMKE®

Padded Inserts

Patented Padded Insert System

Our exclusive, patented design prevents small items from wandering between compartments, and allows you to pre-load and store Inserts outside the Domke Bag. Preparing for a shoot is as easy as dropping in the Insert(s) you need! Inserts (except for "short" models) are 8" deep to fit most Classic Domke Camera Bags and Satchels. All Inserts feature removable outer-wall cushions so you can increase or reduce the padding around your equipment.

1-Compartment Mini Insert

Included with F-803 and J-803 Camera Satchel

Holds 1 lens, flash, or other accessories.



720-200

• 3.75" W x 4" D x 8" H

1-Compartment Standard Insert

Ideal for SLR camera bodies, 2 flash units, or zoom lens.



720-210

• 5.75" W x 3.5" D x 8" H

1-Compartment Large Insert

Included with F-4AF Pro System and F-7 Double AF Bags

Designed for SLR or Pro SLR body. Also great for zoom lenses, flash, accessories or palm-sized video camcorders.



720-211

• 5.25" W x 6" D x 8" H

1-Compartment Short Insert

Fits in the F-6 bag

Fits many of the SLR bodies, lenses and flashes.



720-216

• 4" W x 5.5" D x 6.75" H

2-Compartment Insert

Also included with F-4AF and F-7AF

For 2 lenses, 2 flash units, or any similar combination. Add one of these Inserts to the 4-Compartment Insert in your F-2 to section it off completely.



720-220

• 4.25 W"x 5.5" D x 8" H

2-Compartment Short Insert

Fits in F-6 bag

For 2 lenses, 2 flashes or a combination.



720-226

- 3" W x 5.5" D x 7" H

3-Compartment Insert

Carry your lens and flash safely by using this insert in your Domke Satchel.



720-230

- 11" W x 2.5" D x 7.75" H

3-Compartment Combination Insert

Ideal for a camera body, lens and flash.



720-233

- 7.75" W x 6" D x 7.75" H

4-Compartment Standard Insert

Included with F-2 Original Bag and F-1X Little Bit Bigger Bag

Designed for extra lenses and/or strobe units or accessories. Add a second 4-Compartment Insert to fully section off your F-1X.



720-240

- 5.5" W x 8" D x 7.75" H

4-Compartment Digital Wide Angle

Designed similar to the standard insert with a little extra room.



720-245W

- 6" W x 8" D x 7.5" H

4-Compartment "Short" Insert

Included with the F-6 bag

Fits a lens, flash and accessories.



720-246

- 5.75" W x 7" D x 6.75" H

Digital SLR Camera Insert

Great for a DSLR with short lens plus 2 lenses and 2 flashes.



720-250D
• 6.25" W x 11.5" D x 8" H

J-Series Adjustable Main Compartment

Fits 1 camera body or 2 lenses and 2 flashes or a combination.



720-2JM
• 6.5" W x 7.75" D x 8" H

Deluxe Bottom Boards For F-2 and J-2

- 5-3/4" x 12-5/8"



791-100 (shown)

For F-1X, F-7 and F-804

- 5-3/4" x 16-5/8"

791-101

For J-1

- 5-3/4" x 14-5/8"

791-102

Item No.	Description	J-1	J-2	J-3	J-803	F-1X	F-2	F-3X	F-4AF	F-5XB F-5XA	F-6	F-7	F-9 F-8	F-5XC F-10	F-802 F-808	F-803
720-2JM	J-Series Adjustable Main Compartment Insert	Z	Z	0	X	0	0	X	0	X	X	0	X	X	X	X
720-2JP	J-Series End Pocket Insert	Z	Z	Z	X	X	X	X	X	X	X	X	X	X	X	X
720-200	1-Compartment Mini Insert	X	X	X	Z	X	X	X	X	X	X	X	X	X	X	Z
720-210	1-Compartment Standard Insert	0	0	0	X	0	0	X	0	X	X	0	X	X	X	X
720-211	1-Compartment Large Insert	0	0	0	X	0	0	X	Z	X	X	Z	X	X	X	X
720-216	1-Compartment "Short" Insert	X	X	X	X	X	X	X	X	X	0	X	X	X	X	X
720-220	2-Compartment Insert	0	0	0	X	0	0	X	Z	X	X	Z	X	X	X	X
720-226	2-Compartment "Short" Insert	X	X	X	X	X	X	X	X	X	0	X	X	X	X	X
720-230	3-Compartment Insert	0	0	X	X	0	0	X	0	X	X	0	X	X	X	X
720-233	3-Compartment Combination Insert	0	0	0	X	0	0	X	0	X	X	0	X	X	X	X
720-240	4-Compartment Insert	0	0	0	X	Z	Z	X	0	X	X	0	X	X	X	X
720-245W	4-Compartment Digital "Wide Angle" Insert	0	0	0	X	0	0	X	0	X	X	0	X	X	X	X
720-246	4-Compartment "Short" Insert	X	X	X	X	X	X	X	X	X	Z	X	X	X	X	X
720-250D	Digital SLR Camera Insert	0	0	X	X	0	0	X	X	X	X	0	X	X	X	X

Z Included in bag

0 Optional accessories

X Doesn't fit in bag

DOMKE®

Add-On Pouches

F-945 Belt Pouch

Well suited for camera bodies, lenses, batteries, flashes and accessories. This model is specifically designed for belt use, so it does not have the hook & loop tabs found on other models.

6.75" H x 8.5" W x 4" D

Add-On Pouches

These "spare pockets" make a useful addition to any shoulder strap, belt or camera bag. All pouches have weather flaps with adjustable hook & loop closures. Create a hands-free storage system by adding a Domke Belt (sold separately).



710-30B – Black Canvas
710-30S – Sand Canvas
710-30D – Olive Canvas
710-30N – Navy Canvas

F-901 Compact Pouch

A handy holster for handle-type strobes, power packs, or even a 300mm F/4 lens! Same attachment methods as the Compact Pouch. These Pouches have weather flaps and adjustable hook & loop closures.

5" W x 9" H x 2.75" D



710-10B – Black Canvas
710-10S – Sand Canvas
710-10D – Olive Canvas
710-10N – Navy Canvas

F-902 Super Pouch

6" W x 11" H x 3" D



710-20B – Black Canvas
710-20S – Sand Canvas
710-20D – Olive Canvas
710-20N – Navy Canvas

F-903 Collection

Designed for today's digital camera, the Domke F-903 provides protection for any size point & shoot camera. With durable cotton canvas, leather accents and metal hardware, these versatile pouches also include a belt loop and a detachable shoulder strap for various carrying options.

707-20B – Black Canvas
707-20S – Sand Canvas
707-20D – Olive Canvas
707-20N – Navy Canvas

707-30B – Black Canvas
707-30S – Sand Canvas
707-30D – Olive Canvas
707-30N – Navy Canvas



F-903 Compact Pouch

- Size (Exterior) – 3.75" W x 2.5" D x 5" H

F-903 Medium Pouch

- Size (Exterior) – 4" W x 3" D x 5.5" H

F-903 Small Bag

- Size (Exterior) – 7" W x 4.5" D x 6.5" H



707-40B – Black Canvas
707-40S – Sand Canvas
707-40D – Olive Canvas
707-40N – Navy Canvas

DOMKE® Accessories

Domke offers a variety of accessories to increase the photographic experience including unique protection and carrying solutions. For equipment protection we have wraps, x-ray guards and Dri-Safe all weather carrying cases. Our carrying options include several straps, handles, belts, and the extremely popular USPO shoulder pad.

Protective Wraps

Made of padded knit with non-scratch nylon backing, they wrap around lenses, tools or anything else that needs protection. Hook & loop tabs on all four corners let each wrap be self-secured in any number of ways. Available in 11" (28cm), 15" (38cm), and 19" (48cm) square.



Gripper® Utility Straps

Made of the same thick webbing used on all our Domke Bags, with our Gripper® non-slip tracks woven in. The adjustable Utility Strap is 1.5" wide, and has durable nylon swivel hooks at both ends. Great for carrying hard cases and sling bags, or as a supplementary waist strap for your Domke Bag.



Gripper® Camera Straps

Whenever you have to carry your camera outside your bag, these straps provide the same non-slip security as a Domke Shoulder Strap. They come with the hardware needed to attach to any SLR. Some models feature twist-proof quick release extensions.



Super Handle

A variation on the hand-carrying strap supplied with most Domke Camera Bag models. Made of tough canvas webbing, with a rigid grip insert for leverage and comfort. Standard on F-804 Super Satchel, it attaches to existing hardware on F-2, F-3X, F-4AF, and F-6 Bags.



Backpack Strap

Carry your Domke Bag like a backpack with this unique harness. It attaches to the hardware on your Domke Camera Bag or Satchel, and allows the bag to ride low on your back.



Belts

The perfect addition to your F-5XB Shoulder and Belt Bag or Accessory Pouch. Made of tough 2" wide canvas webbing with durable side-release buckle and removable key/accessory clip.



Compatible with

F-945 Belt Pouch	F-5XA Shoulder & Belt Bag
F-901 Compact Pouch	F-5XB Shoulder & Belt Bag
F-902 Super Pouch	F-505 Lens Pouches

USPO Shoulder Pad

This ergonomically designed pad is made of thick foam rubber on a tough leather backing. Identical to the shoulder pad used by letter carriers, with the addition of hook & loop tabs which adjust to fit straps up to 2.75" wide.



X-Ray Guards

Designed to protect equipment from harmful x-rays during airport security and customs checks. Lead-lined bags also protect other sensitive media from the low-dosage x-ray machines used in airports around the world. Use in carry-on luggage, because checked luggage is exposed to high-dosage x-rays that X-Ray Guard cannot protect against.



Dri-Safe

This is serious all-weather protection for photo and electronic equipment, travel items, important documents, wallet/keys, medicine, and so on. Dri-Safe keeps its contents dry, cushioned and clean via a completely waterproof liner layered between durable 420 denier pack cloth on the outside and ripstop nylon on the inside. Closed-cell foam between the layers cushions and protects the contents.

- Roll-top closure with quick-release buckle seals out the elements.
- Rear loops allow attachment to belt or another bag.
- Removable shoulder strap has no-twist swivel snaphooks.
- Floats when sealed, but not intended for prolonged submersion.

Small Dri-Safe

- Dimensions: 7" x 3.75" x 2.5"

Large Dri-Safe

- Dimensions: 7" x 7.5" x 3.25"



Baseball Cap

A high quality cotton cap, khaki crown, black bill with embroidered Domke logo. Adjustable, one size fits all. It's the ideal compliment to the Domke vest or jacket.



DOMKE®

Vests & Jackets

Vests

As comfortable and practical as a Domke® camera bag! The 100% cotton vest is pigment dyed and prewashed for fashion, comfort and durability.

733-001 – Small Black	734-001 – Small Khaki
733-002 – Medium Black	734-002 – Medium Khaki
733-003 – Large Black	734-003 – Large Khaki
733-004 – X-Large Black	734-004 – X-Large Khaki
733-005 – XX-Large Black	734-005 – XX-Large Khaki

The ultimate combination of fashion and function for the active photographer or outdoor enthusiast!

- Cotton mesh panels at yoke and back provide cooling ventilation
- 15 well placed pockets provide ample room for just about anything you can carry
- Side vents
- Accessory ring
- Removable press pass holder
- Wire holder
- Waist adjustment tabs
- Heavy-duty double-pull zipper provides an adjustable closure for greater comfort
- Available Sizes: S, M, L, XL and XXL
- Color: Khaki and Black



Jackets

If you're outdoors shooting, hiking, birding or touring, the PhoTOGS® Jacket has 16 pockets to keep your gear easily accessible. There's plenty of room for cameras, lenses, flash, filters, binoculars, maps, and just about anything else you want to "wear."

- Zip-off sleeves, convert jacket to a vest.
- Stowaway nylon hood inside zippered collar.
- Two hidden zippered pockets for passports, tickets, cash, etc.
- Roomy, bellows-style cargo pockets.
- Jacket and lining are 100% cotton, pigment dyed and pre-washed. Neutral khaki with an olive/gray tint.
- Handwarmer pockets under cargo pockets.
- Color: Khaki Only.

- 735-001 – Small (36-38 Chest)
- 735-002 – Medium (40-44)
- 735-003 – Large (44-48)
- 735-004 – X-Large (50-52)
- 735-005 – XX-Large (54-56)



DOMKE[®]
Customize It!

Customize Your Domke Bag.

Mix and match insets to fit your needs.



Domke F-2 with one 4-section insert



Your Domke. Your Way.



Domke F-2 with two 2-section inserts

**Soft Side
Construction and
Customizable Inserts
Allow You to Fit More
Equipment Into
Less Space.**



Domke F-1, with 4-section insert holds all this... with room for more!

Free Manuals Download Website

<http://myh66.com>

<http://usermanuals.us>

<http://www.somanuals.com>

<http://www.4manuals.cc>

<http://www.manual-lib.com>

<http://www.404manual.com>

<http://www.luxmanual.com>

<http://aubethermostatmanual.com>

Golf course search by state

<http://golfingnear.com>

Email search by domain

<http://emailbydomain.com>

Auto manuals search

<http://auto.somanuals.com>

TV manuals search

<http://tv.somanuals.com>