

★ TURNING THE UNIT OFF

Pooh Learning Pond has an automatic shut-off feature to help prolong battery life. After a brief period of inactivity, Pooh prompts your child for a response. If your child doesn't respond by pressing a button, Pooh will repeat the prompt or ask again. If there is still no activity, the unit will then automatically turn itself off. Pressing the "ON" button can then restart the toy.

NOTE: Your child needs to wait until after Pooh and Tigger have stopped talking before pressing a letter button. Presses made while the characters are speaking will not register.

★ WHEN TO REPLACE BATTERIES

Change the batteries when the voices and sounds are garbled or seem to be slowing down during play, or when pressing a button does not trigger a response from the unit.

To ensure proper function:

- Do not mix old and new batteries.
- Do not mix alkaline, standard or rechargeable batteries.
- Battery installation should be done by an adult.
- Non-rechargeable batteries are not to be recharged.
- Rechargeable batteries are to be removed from the toy before being charged (If removable).
- Rechargeable batteries are only to be charged under adult supervision (If removable).
- Only batteries of the same or equivalent type as recommended are to be used.
- Batteries are to be inserted with the correct polarity.
- Exhausted batteries are to be removed from the toy.
- The supply terminals are not to be short-circuited.

★ TAKING CARE OF THE POOH LEARNING POND

To protect your Pooh Learning pond, follow these instructions:

- Prevent spills of food and beverage on the unit.
- Do not submerge the product in water. If the product needs to be cleaned, wipe gently with a barely damp soft cloth.
- Do not throw or kick the product, and do not push sharp objects through the speaker openings.
- Do not press the liquid crystal display and avoid heavy shock or the display may fail.

★ 90-DAY LIMITED WARRANTY

Tiger Electronics, Ltd. (Tiger) warrants to the original consumer purchaser of this product that the product will be free from defects in materials or workmanship for 90 days from the date of original purchase. This warranty does not cover damage from accident, negligence, improper service or use or other causes not arising out of defects in materials or workmanship.

During this 90-day warranty period, the product will either be repaired or replaced (at Tiger's option) without charge to the purchaser, when returned with proof of the date of purchase to either the retailer or to Tiger.

Product returned to Tiger without proof of the date of purchase or after the 90-day warranty period has expired, but prior to one year from the original date of purchase, will be repaired or replaced (at Tiger's option) for a service fee of U.S.\$22.00. Payments must be by check or money order payable to Tiger Electronics, Ltd.

The foregoing states the purchaser's sole and exclusive remedy for any breach of warranty with respect to the product.

All product returned must be shipped prepaid and insured for loss or damage to:

Tiger Repair Department
1000 N. Butterfield Road, Unit 1023
Vernon Hills, IL 60061

The product should be carefully packed in the original box or other packing materials sufficient to avoid damage during shipment. Include a complete written description of the defect, a check if product is beyond the 90-day warranty period, and your printed name, address and telephone number.

THIS WARRANTY IS IN LIEU OF ALL OTHER WARRANTIES AND NO OTHER REPRESENTATIONS OR CLAIMS OF ANY NATURE SHALL BE BINDING ON OR OBLIGATE TIGER IN ANY WAY. ANY IMPLIED WARRANTIES APPLICABLE TO THIS PRODUCT, INCLUDING WARRANTIES OF MERCHANTABILITY AND FITNESS FOR A PARTICULAR PURPOSE, ARE LIMITED TO THE NINETY (90) DAY PERIOD DESCRIBED ABOVE. IN NO EVENT WILL TIGER BE LIABLE FOR ANY SPECIAL, INCIDENTAL, OR CONSEQUENTIAL DAMAGES RESULTING FROM POSSESSION, USE, OR MALFUNCTION OF THIS TIGER PRODUCT.

Some states do not allow limitations as to how long an implied warranty lasts and/or exclusions or limitations of incidental or consequential damages, so the above limitations and/or exclusions of liability may not apply to you. This warranty gives you specific rights, and you may also have other rights which vary from state to state.

For more information about Tiger Electronics, our products and special promotions, please visit our web site at: www.tigertoys.com

TIGER
ELECTRONICS, LTD.

©, TM, & © 1999 Tiger Electronics, Ltd.
All rights reserved.
980 Woodlands Parkway,
Vernon Hills, Illinois 60061, U.S.A.

© Disney
Based on the "Winnie the Pooh" works.
© A.A. Milne and E.H. Shepard.
Visit the Disney web site at www.Disney.com

Questions? Call:
1-800-TIGER ED

PRINTED IN CHINA
871520001HWTI-01

Pooh

Pooh Learning Pond

OPERATING INSTRUCTIONS

Ages 2 and Up
Model 87-152



★ MESSAGE TO PARENTS:

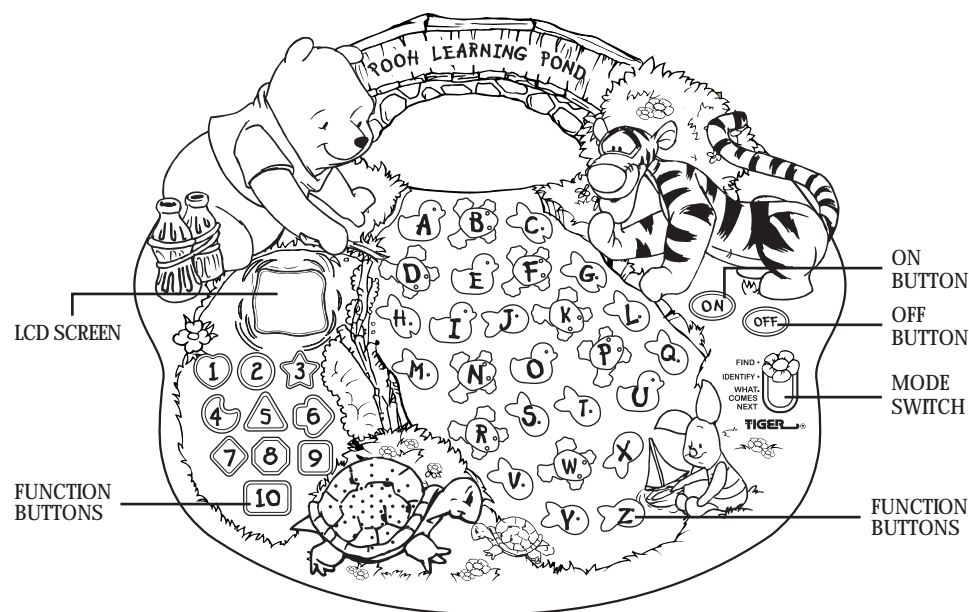
Thank you for bringing home the Pooh Learning Pond. This is a wonderful educational product for your child. What could be more exciting than learning from Pooh and his friends?

With the Pooh Learning Pond, your child will learn letters, numbers, shapes and phonics. These are fundamental skills that combine to form the building blocks for future development.

Please read the instructions carefully and learn about the many different features of the Pooh Learning Pond. This will allow you to easily explain them to your child in a way that is easy for them to understand.

Please note: The Pooh Learning Pond will not understand a button push if it is made while the unit is talking or making a sound. Please be sure not to answer any questions while the unit is talking or making a sound or it may not understand your response.

★ HOW TO USE POOH LEARNING POND



ON BUTTON: Press this button to turn the unit ON.

OFF BUTTON: Press this button to turn the unit OFF.

MODE SWITCH: Slide this switch to select one of the three different modes of learning, FIND, IDENTIFY or WHAT COMES NEXT?

1

FUNCTION BUTTONS: Use the letter, shape and number keys to answer questions in all learning modes.

LCD SCREEN: Displays the letters of the alphabet to reinforce learning.

★ INSERTING BATTERIES:

IMPORTANT NOTE: Battery installation should always be done by an adult.

1. Pooh Learning Pond requires: 4 x 1.5 V "AA" or "LR6" batteries.
2. The battery compartment is located on the back of the unit.
3. Open the battery compartment door by unfastening the screw with a universal Philips ® screwdriver (ILLUSTRATION 1).
4. Remove discharged batteries if necessary and insert new batteries according to the diagram provided in the battery compartment (ILLUSTRATION 2).
5. Close the battery compartment door.

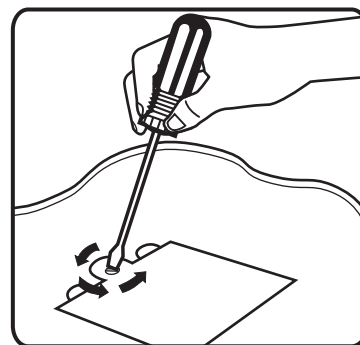


ILLUSTRATION 1

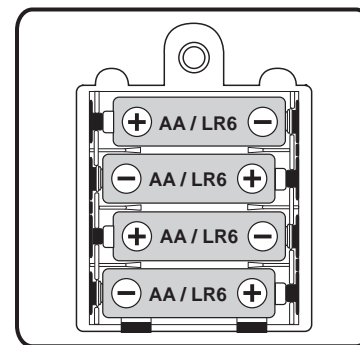


ILLUSTRATION 2

★ ADJUSTING THE LCD SCREEN CONTRAST

1. Hold the button "A" and turn the unit on. Pooh's face will show on the LCD.
2. Press the button "G" to decrease the LCD contrast.
3. Press the button "F" to increase the LCD contrast.
4. Press the button "E" to quit or wait for the automatic time out.

Note: These instructions are also stamped onto the back of the product for future reference.

2

★ HOW TO PLAY

The Pooh Learning Pond combines fun animation on a large LCD screen for visual reinforcement with the friendly world of Pooh to encourage learning. With phonics, shapes, numbers and letters the learning fun goes on for hours.

1. Press the ON button. You will hear a friendly greeting from Pooh: "Hello!" "I wonder what we shall learn today?"
2. Choose the mode/way you wish to play: FIND, IDENTIFY or WHAT COMES NEXT?.

FIND MODE: In find mode Pooh might ask you to find a specific letter, or Tigger might ask you to find a shape or number. After each question, the corresponding letter, shape or number will be shown on the LCD screen providing a visual clue. This helps reinforce word/image association. Your child can respond to the question by pressing the matching letter, number or shape key on the keyboard.

IDENTIFY MODE: Pooh or Tigger will prompt the child to push a button. Each time a button is pressed, Pooh or Tigger will identify the button and the corresponding image will appear on the LCD screen. Every so often, Pooh or Tigger will respond with an encouraging phrase.

WHAT COMES NEXT?: Pooh or Tigger will ask your child, "What comes after the letter ____?" or "What comes after ____?" for number buttons. Your child can respond to the prompt by pressing the corresponding key.

FRIENDLY AND ENCOURAGING FEEDBACK:

In all the play modes, Tigger and Pooh will gently tell the child if he/she has answered correctly. If the child answers correctly, Pooh or Tigger will respond with an enthusiastic congratulations such as "That's right!" or "Very good!" If the child answers incorrectly, Tigger or Pooh will provide an encouraging response such as "Oopsie, try again," or "Almost, try again." The child will be given several attempts to correctly respond. At that point Pooh will move on to another question or prompt. If the child does not respond to a prompt with a button press, Pooh or Tigger will wait for a short period of time and then repeat the prompt. If there is still no action taken by the child, then the prompt will be repeated again. At that point, if the child does not respond, Pooh or Tigger will ask a new question or provide a new prompt.

3

Free Manuals Download Website

<http://myh66.com>

<http://usermanuals.us>

<http://www.somanuals.com>

<http://www.4manuals.cc>

<http://www.manual-lib.com>

<http://www.404manual.com>

<http://www.luxmanual.com>

<http://aubethermostatmanual.com>

Golf course search by state

<http://golfingnear.com>

Email search by domain

<http://emailbydomain.com>

Auto manuals search

<http://auto.somanuals.com>

TV manuals search

<http://tv.somanuals.com>