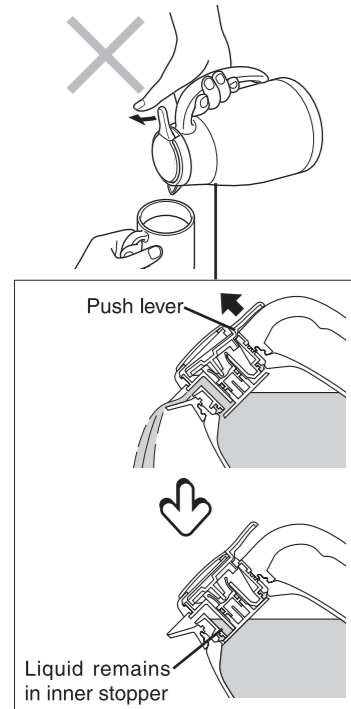


How to Use

6 After pouring, hold the jug in an upright and level position, and wait 2 to 3 seconds before releasing the push lever.

Caution

Do not release the push lever while the jug is tilted. A small amount of liquid may remain in the cap and spill out while carrying the jug.

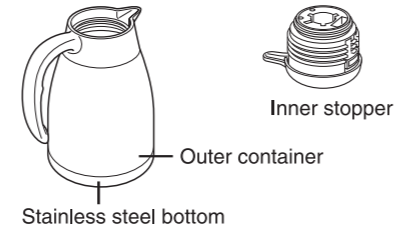


5

How to Clean

- ◆ Clean after every use.
- ◆ Use synthetic kitchen detergent (for plates and cooking utensils).
- ◆ Use a sponge or soft piece of cloth.

- ① Wipe with a cloth that has been dampened with warm water and detergent and thoroughly wrung out. (Do not wash.)
- ② Wipe off with a dry cloth, and allow each part to dry thoroughly.



Caution

- Do not wash (only wipe) the outer container.
- Do not wash (only wipe) the inner stopper.
- Do not use harsh / abrasive materials such as thinner, bleach, chemical cleaners, steel wool, and other hard brushes.
- Do not use dishwashers / dishdryers or boiling water.
- Be sure to attach the gasket for the cap. → See next
- Wash and dry each part thoroughly before storing for long periods without use.

6

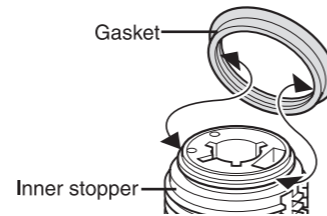
Cleaning Rust-like Spots on the Inside of the Inner ?ask.

- Dilute 1 tablespoon (approx. 10g) of citric acid in warm water and pour into the outer container.
- Let it soak for 2 to 3 hours, and then clean with a sponge and rinse abundantly with the water.
- Wipe the inside of the container with a dry cloth and allow to dry thoroughly.

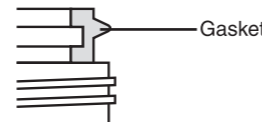
As a substitute:

Use 1/2 cup of white vinegar instead of citric acid.

Attaching and Removing the Gasket



Attach the gasket fully and securely



Replacing and Purchasing Consumable Parts

The cap and gasket are consumable parts. Check once every 6 months to 1 year for damage/deterioration. If heavily stained or loose, replace them. For replacements, contact the shop where you purchased this product.

Inquiries

Tiger Corporation manages product quality very carefully, however, should trouble occur with this product, contact the shop where you purchased, providing them with the following information.

1. Product name
2. Model Number
3. Description of trouble (As detailed as possible)

Feel free to send any questions or comments about this product to the shop where you purchased it.

Specifications

Materials

Inner flask	Stainless steel
Outer container	XS : Stainless steel GT : Stainless steel (with acrylic coating)
Mouth	Polypropylene
Inner stopper	Polypropylene

Heat retention

PWL-A062	Greater than 35°C / 95°F (24hour) Greater than 54°C / 129°F (10hour)
PWL-A122	Greater than 49°C / 120°F (24hour) Greater than 69°C / 156°F (10hour)
PWL-A162	Greater than 54°C / 129°F (24hour) Greater than 72°C / 162°F (10hour)
PWL-A202	Greater than 59°C / 138°F (24hour) Greater than 75°C / 167°F (10hour)

- The term, "heat retention," refers to the temperature of hot water, which had been heated to 95°C · 202°F, poured into the handy jug, and left for 10/24 hours at a room temperature of 20°C · 67°F.

*For the purpose of performance improvement, designs, specifications and parts shown in this publication are subject to change without notice.



MODEL
PWL-A

Household Use Only

Stainless Steel Handy Jug

Instructions

Thank you for purchasing a "TIGER" Stainless Steel Handy Jug.

Please read the instructions completely before use.

Keep these instructions for future reference.



TIGER CORPORATION

Head Office: 3-1 Hayamicho, Kadoma-City, Osaka, 571-8571 Japan

Safety Precautions

Do not remove the warning labels affixed to this product.

Keep out of reach of children.



Do not tilt or place this product on its side when it is full.

The contents may spill and result in burns.

Do not knock over, drop, or subject this product to strong shocks.

The contents may spill and result in burns, or the product may be damaged.



Do not use this product near stoves or open flames, or in direct sunlight.

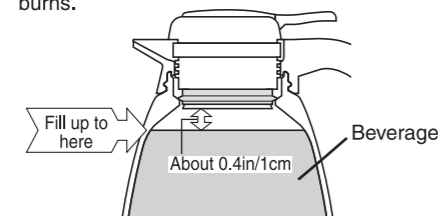
Heat can burn, bend and discolor the product.

Do not use this product while in a car.

The contents may spill and result in burns or staining of the car's interior.

Do not fill the jug above the fill-up limit point shown below.

Overfilling the product may stiffen the push lever or cause the contents (beverage) to spill when closing the cap, resulting in burns.



Do not use this product for any purposes other than keeping beverages warm or cold.

Make sure that the cap is fitted securely before pouring beverages.

The cap may fall off, causing the contents to spill and result in burns.

Do not press the push lever when the spout is near a person's face or when the product is in a tilted position.

The beverage or steam may burst out suddenly and result in burns.

When pouring hot beverages from a kettle, do not bring the kettle too close to the mouth.

The product may be knocked over, resulting in burns, injuries, or damage to the product.



Do not put dry ice or carbonated beverages in this product.

Doing so may cause pressure to build in the product, resulting in the cap getting stuck. Moreover, burns may result from the contents bursting out or the cap becoming damaged and bursting off.

Do not pour milk, dairy products, and certain fruit juices in this product.

Doing so may cause the quality of this product to deteriorate. Moreover, such contents stored over long periods of time may deteriorate and produce gas. As pressure builds in the product, the cap may become stuck, damaged, or burst off and the contents may burst out, resulting in injuries.

Do not pour soups or beverages containing salt in this product.

Doing so may result in rusting or deterioration of product quality.

Do not put tea leaves or fruit pulp in this product.

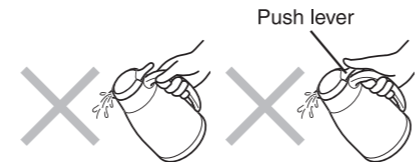
Doing so may clog the spout, causing the contents to splatter and result in burns.

Do not carry this product around in a tilted position or with the push lever pressed.

The contents may leak and result in burns.



Carry in an upright and level position



Tilted position Push lever pressed

Do not disassemble or attempt to repair this product by yourself.

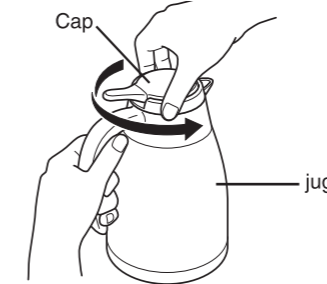
Doing so may result in damage to the product or accidents.

How to Use

1 Remove the cap.

When Using for the First Time

Wash the Inner flask, mouth, and Cap. →P.6

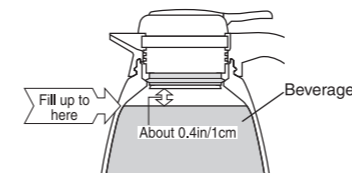


2 To keep your beverage warm or cool longer, pour hot (or cold) water into the jug, and let it sit for 1 to 2 minutes to allow the jug to heat (or cool).

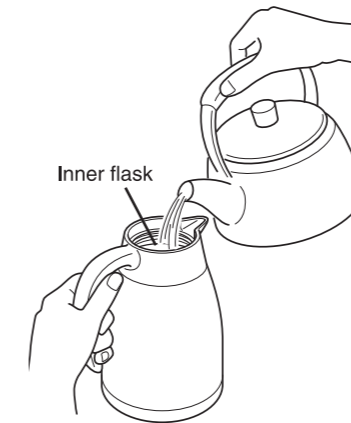
Pour out the water when finished.

3 Pour your beverage into the jug.

• Fill the jug to the fill-up limit shown below, and do not overfill.

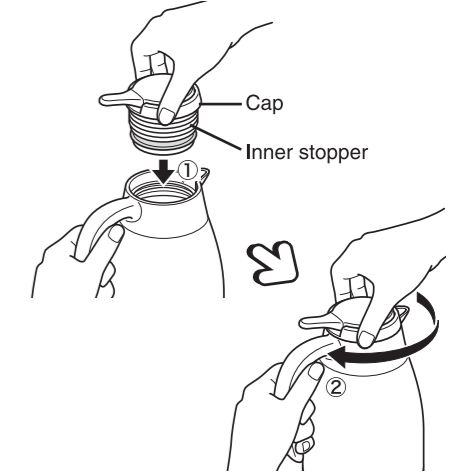
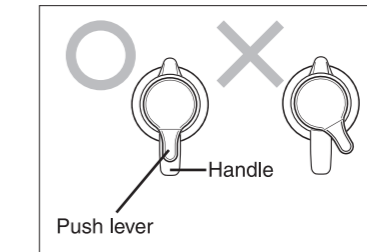


• Break large pieces of ice into small pieces before putting them into the jug.
• When making tea, we recommend pouring hot water into the jug and using tea bags. (When tea leaves are inserted directly, the tea may become discolored over time.)



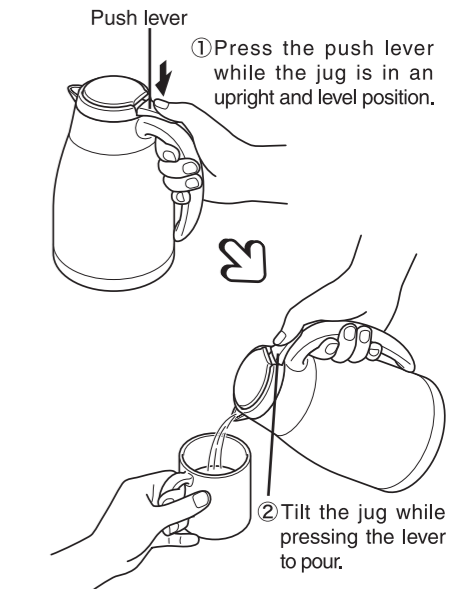
4 Fit the cap onto the jug.

Twist the cap fully until you can no longer turn it.



5 Press the push lever before tilting the jug and pouring the beverage.

When the jug is full, the beverage will pour with just a slight tilt, so bring your cup close to the spout.



1

2

3

4

Free Manuals Download Website

<http://myh66.com>

<http://usermanuals.us>

<http://www.somanuals.com>

<http://www.4manuals.cc>

<http://www.manual-lib.com>

<http://www.404manual.com>

<http://www.luxmanual.com>

<http://aubethermostatmanual.com>

Golf course search by state

<http://golfingnear.com>

Email search by domain

<http://emailbydomain.com>

Auto manuals search

<http://auto.somanuals.com>

TV manuals search

<http://tv.somanuals.com>