

# TIMEX®

www.timex.com

865-095000

## THANK YOU FOR PURCHASING YOUR TIMEX WATCH.

### EXTENDED WARRANTY

**Available in U.S. only.** Extend your warranty for an additional 4 years from date of purchase for \$5. You can pay with AMEX, Discover, Visa or MasterCard by calling 1 800-448-4639 during normal business hours. Payment must be made within 30 days of purchase. Name, address, telephone number, purchase date, and 5-digit model number required. You can also mail a check for \$5 to: Timex Extended Warranty, P.O. Box 1676, Dept. EF, Little Rock, AR 72203.

Please read instructions carefully to understand how to operate your Timex watch.

**Your model may not have all of the features described in this booklet.**



## THANK YOU FOR PURCHASING YOUR TIMEX WATCH.

### EXTENDED WARRANTY

**Available in U.S. only.** Extend your warranty for an additional 4 years from date of purchase for \$5. You can pay with AMEX, Discover, Visa or MasterCard by calling 1 800-448-4639 during normal business hours. Payment must be made within 30 days of purchase. Name, address, telephone number, purchase date, and 5-digit model number required. You can also mail a check for \$5 to: Timex Extended Warranty, P.O. Box 1676, Dept. EF, Little Rock, AR 72203.

Please read instructions carefully to understand how to operate your Timex watch.

**Your model may not have all of the features described in this booklet.**



## GENERAL OPERATION



Press **1** to cycle through time/date, chronograph, countdown timer, alarm. Compass function available in all modes except alarm by pressing **3** (HEADING).

## TIME-DATE

- From **TIME AND DATE** mode, press/hold **2** firmly to set.
- SECONDS will flash. Press **4** to return to zero.
- Press **1** to set HOURS, MINUTES, DAY, MONTH, DATE, NORMAL (12-hour) or MILITARY (24-hour) TIME, BUTTON BEEP (on or off). Selected item will flash.
- Press **4** to advance selected item. Note AM or PM when setting HOURS (12-hour time only). Hold **4** to advance rapidly.
- Press **2** to exit SET procedure.



## ALARM & CHIME

- Press **2** to begin setting. HOURS will flash.
- Press **4** to advance hours. Note AM or PM designation.
- Press **1**, TENS OF MINUTES will flash. Press **4** to advance.
- Repeat for MINUTES. Press **2** to exit SET mode.

**NOTE:** After every new alarm setting, ALARM will be armed when you exit from SET mode by pressing **2**. The symbol **d** will appear, indicating ALARM is armed.

### Chime

- Press **4** to alternate between ON and OFF. This indicates ALARM is armed and active. It will sound for 20 seconds, but can be silenced by pressing any button.



## CHRONOGRAPH

A. Press **4** to begin timing.

**NOTE:** You can leave CHRONOGRAPH mode while it is running. In TIME OF DAY mode, stopwatch icon on left side of middle display indicates chronograph is running.

B. Press **2** to stop.

C. Press **4** to resume timing OR Press and hold **2** to reset.



### Split Timing

A. Begin timing--press **4** as above. Press **4** to temporarily freeze display and measure a split. Lap # will show in upper display, watch will continue counting.

B. Press **4** to resume showing running lap.

C. When event ends, press **2**. Watch will end timing. Display will show final split time (total event time).

D. Press/hold **2** to reset chronograph to zero.

**NOTE:** To pause during split timing (time is not accumulating), press **2**. Press **4** to resume, or press/hold **2** to reset to zero. Displays minutes, seconds and hundredths up to 100 minutes (99:59.99).

## COUNTDOWN TIMER

A. Press **2** to increase MINUTES. Hold to increase rapidly up to 99 minutes.

B. Press **4**, countdown begins. You may switch to another mode without affecting timer. (hourglass symbol appears in TIME OF DAY window while timer is counting.) Even in another mode, timer will beep when it reaches zero. Press any button to cancel beep.

C. To stop timer, press **2** (MUST BE IN TIMER MODE).

D. Press **4** to continue, or press **2** to reset timer to original setting.



## COMPASS CALIBRATION

**IMPORTANT: Watch must be calibrated before using to find directions!**

This product incorporates the magnetic sensor technology of PRECISION NAVIGATION, INC., Mountainview, CA.

A compass works with the Earth's magnetic field; therefore you must **not be in or near large metallic objects** (such as automobiles, bridges, etc.) or objects that give off electromagnetic radiation (such as TV sets), which could interfere with the watch's calibration or use.

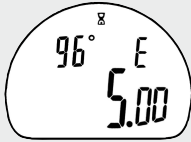
You cannot calibrate or obtain accurate readings from inside buildings, trains, or airplanes.

*Typical accuracy of wrist-worn instruments is within +/- 10 degrees. To optimize accuracy, an optional two-step calibration is recommended, and discussed in further detail below. In calibrating and taking subsequent headings, it is important as with all compasses, to maintain a level plane relative to the earth's horizon. Performing calibration or taking a heading when the watch is not level can result in large heading errors.\* Care must also be taken to avoid areas which may exhibit higher than normal concentrations of hard and soft iron. This is especially true given the relatively weak magnetic field of the earth, relative to other sources of magnetic fields. Failure to do so can result in inaccurate headings. Whenever a heading value is suspect, a new calibration should be performed. It is also recommended that calibration be performed in the intended area of use, or when the watch has been stored for an extended length of time. Care should be taken to avoid storing the watch near any source of magnetism (computers, appliances, TV's, etc.), as the watch can take on a magnetic charge and render subsequent headings inaccurate. When the watch is suspected of having taken on a magnetic charge, a new calibration should be performed.*

*Applying good maintenance procedures, periodic calibration, and observing the guidelines as outlined above will help to insure headings are accurate to within the limitations of the immediate environment.*

- A. To calibrate for magnetic north, press **HEADING** (from TIME OF DAY mode only) once to view direction. (If the watch has not yet been calibrated, you will see HOLD TO CAL instead of direction.) Press and hold **HEADING** until ROTATE WATCH TWICE appears in display
- B. Hold watch level relative to the horizon (on your wrist, in your palm, or on a non-metallic table). Rotate watch slowly two complete rotations (taking at least fifteen seconds per rotation). Press **MODE** when finished.

*(Two-step calibration: Upon completion of STEP A, press **HEADING**. Do not enter a value for declination angle. While in TIME OF DAY mode, press **HEADING**. A heading will be displayed. Noting heading value, adjust watch position for heading of 150 degrees. Initiate calibration by pressing and holding **HEADING** until **ROTATE WATCH** twice is displayed. Repeat calibration procedure as discussed in Step A. At completion of calibration proceed normally to Step C.)*



- C. Watch will then call for you to enter DECLINATION. Pressing **HEADING** will exit calibration mode and leave watch set to measure magnetic north. Entering a declination value instead will allow the watch to point to true north, by adjusting for the angle, which varies for different spots on the globe.
- D. To set watch for true north, enter declination angle for your location from the chart below. Press **START** to advance flashing TENS OF DEGREES, press **MODE** to select DEGREES, then **START** to advance. Press **MODE** to select direction, then **START** to switch between E and W. Press **HEADING** to exit calibration and save new values.

**TABLE 1. Declination angles for major world cities:**

Anchorage . . . . .22E	Little Rock . . . . . 3E	Seattle . . . . .19E
Atlanta . . . . . 4W	Livingston, MT . . . . .14E	Shanghai . . . . . 5W
Bombay . . . . . 1W	Munich . . . . . 1E	Toronto . . . . .11W
Boston . . . . .16W	New York City . . . . .14W	Vancouver . . . . .20W
Calgary . . . . .18W	Orlando . . . . . 5W	Washington DC . . . . .10W
Chicago . . . . . 3W	Oslo . . . . . 2W	Waterbury, CT . . . . .14W
Denver . . . . .10E	Paris . . . . . 2W	
Jerusalem . . . . . 3E	Rio De Janeiro . . . . .21W	
London . . . . . 4W	San Francisco . . . . .15E	

For further declination angle information, see the TIMEX website [www.timex.com](http://www.timex.com).

**Finding Direction**

- A. Hold watch level relative to the horizon in any mode but ALARM. Press **HEADING** to display compass heading indicated by red arrow on watch face (12 o'clock position). You may wish to turn bezel around watch face to correspond to measured direction. Press **HEADING** again to cancel heading display (if not cancelled, compass heading will display for ten seconds).
- B. When pressing **HEADING** to obtain heading, watch may display HOLD TO CAL indicating calibration is needed. You can recalibrate at your option; see instructions above.

*\*Some watch models have a leveling bubble above the 12 o'clock/N position to assist in calibrating the compass. Watch is level when the bubble is centered in the lens.*


**INDIGLO® NIGHT-LIGHT**

Press **5** to activate light. Patented (U.S. pat. 4,527,096 and 4,775,964) electroluminescent technology used in the INDIGLO night-light illuminates entire watch face at night and in low light conditions.

**NIGHT-MODE® FEATURE**

Your Timex watch is equipped with NIGHT-MODE®. This Timex patented feature (U.S. Patent Number 4,912,688) enhances the benefits of the INDIGLO® night-light. Once activated, any button pushed will cause INDIGLO night-light to stay on for 3 seconds. NIGHT-MODE is activated by pressing/holding **5** for 3 seconds. Watch will beep, indicating you are in NIGHT-MODE. NIGHT-MODE will stay activated for 7-8 hours or until you deactivate it by pressing/holding **5** again for 3 seconds.

**WATER & SHOCK RESISTANCE**

If your watch is water-resistant, meter marking or (  ) is indicated.

Water-Resistance Depth	p.s.i.a.* Water Pressure Below Surface
<b>100m/328ft</b>	<b>160</b>

\*pounds per square inch absolute

**WARNING: TO MAINTAIN WATER-RESISTANCE, DO NOT PRESS ANY BUTTONS OR PULL OUT THE CROWN UNDER WATER.**

1. Watch is water-resistant only as long as lens, push buttons and case remain intact.
2. Watch is not a diver watch and should not be used for diving.
3. Rinse watch with fresh water after exposure to salt water.
4. **Shock-Resistance:** If your watch is shock-resistant, it will be indicated on the watch face or caseback. Timex shock-resistant watches are designed to pass the ISO test for shock-resistance. However, avoid damaging the lens.

## BATTERY

**Timex strongly recommends that a retailer or jeweler replace battery.** If applicable, push reset button when replacing battery. Battery type is indicated on caseback. Battery life estimates are based on certain assumptions regarding usage; battery life may vary depending on actual usage.

**DO NOT DISPOSE OF BATTERY IN FIRE. DO NOT RECHARGE. KEEP LOOSE BATTERIES AWAY FROM CHILDREN.**

### TIMEX INTERNATIONAL WARRANTY

(U.S. – LIMITED WARRANTY – PLEASE SEE FRONT OF INSTRUCTION BOOKLET  
FOR TERMS OF EXTENDED WARRANTY OFFER)

Your TIMEX watch is warranted against manufacturing defects by Timex Corporation for a period of ONE YEAR from the original purchase date. Timex and its worldwide affiliates will honor this International Warranty.

Please note that Timex may, at its option, repair your watch by installing new or thoroughly reconditioned and inspected components or replace it with an identical or similar model. **IMPORTANT — PLEASE NOTE THAT THIS WARRANTY DOES NOT COVER DEFECTS OR DAMAGES TO YOUR WATCH:**

- 1) after the warranty period expires;
- 2) if the watch was not originally purchased from an authorized Timex retailer;
- 3) from repair services not performed by Timex;
- 4) from accidents, tampering or abuse; and
- 5) lens or crystal, strap or band, watch case, attachments or battery. Timex may charge you for replacing any of these parts.

THIS WARRANTY AND THE REMEDIES CONTAINED HEREIN ARE EXCLUSIVE AND IN LIEU OF ALL OTHER WARRANTIES, EXPRESS OR IMPLIED, INCLUDING ANY IMPLIED WARRANTY OF MERCHANTABILITY OR FITNESS FOR PARTICULAR PURPOSE. TIMEX IS NOT LIABLE FOR ANY SPECIAL, INCIDENTAL OR CONSEQUENTIAL DAMAGES. Some countries and states do not allow limitations on implied warranties and do not allow exclusions or limitations on damages, so these limitations may not apply to you. This warranty gives you specific legal rights and you may also have other rights which vary from country to country and state to state.

To obtain warranty service, please return your watch to Timex, one of its affiliates or the Timex retailer where the watch was purchased, together with a completed original Watch Repair Coupon or, in the U.S. and Canada only, the completed original Watch Repair Coupon or a written statement identifying your name, address, telephone number and date and place of purchase. Please include the following with your watch to cover postage and handling (this is not a repair charge): a US\$ 7.00 check or money order in the U.S.; a CAN\$6.00 cheque or money order in Canada; and a UK£2.50 cheque or money order in the U.K. In other countries, Timex will charge you for postage and handling. NEVER INCLUDE A SPECIAL WATCHBAND OR ANY OTHER ARTICLE OF PERSONAL VALUE IN YOUR SHIPMENT.

For the U.S., please call 1-800-448-4639 for additional warranty information. For Canada, call 1-800-263-0981. For Brazil, call 0800-168787. For Mexico, call 01-800-01-060-00. For Central America, the Caribbean, Bermuda and the Bahamas, call (501) 370-5775 (U.S.). For Asia, call 852-2815-0091. For the U.K., call 44 208 687 9620. For Portugal, call 351 212 946 017. For France, call 33 3 81 63 42 00. For Germany, call +43 662 88 92130. For the Middle East and Africa, call 971-4-310850. For other areas, please contact your local Timex retailer or Timex distributor for warranty information. In Canada, the U.S. and in certain other locations, participating Timex retailers can provide you with a postage-paid, pre-addressed Watch Repair Mailer for your convenience in obtaining factory service.

## Free Manuals Download Website

<http://myh66.com>

<http://usermanuals.us>

<http://www.somanuals.com>

<http://www.4manuals.cc>

<http://www.manual-lib.com>

<http://www.404manual.com>

<http://www.luxmanual.com>

<http://aubethermostatmanual.com>

Golf course search by state

<http://golfingnear.com>

Email search by domain

<http://emailbydomain.com>

Auto manuals search

<http://auto.somanuals.com>

TV manuals search

<http://tv.somanuals.com>