

Juiceman[®]

Model JM503



INSTRUCTION MANUAL



IMPORTANT SAFEGUARDS

When using electrical appliances, basic safety precautions should always be followed including the following:

1. Read all instructions.
2. To protect against risk of electrical shock do not put cord, plugs, or appliance in water or other liquid.
3. Close supervision is necessary when any appliance is used by or near children.
4. Unplug from outlet when not in use, before putting on or taking off parts, and before cleaning.
5. Avoid contacting moving parts.
6. Do not operate any appliance with a damaged cord or plug or after the appliance malfunctions, or is dropped or damaged in any manner. Contact Consumer Service for examination, repair or electrical or mechanical adjustment.
7. The use of attachments, including canning jars, not recommended by the manufacturer may cause fire, electric shock, or injury.
8. Do not use outdoors.
9. Do not let cord hang over edge of table or counter.
10. Do not let cord contact hot surface, including the stove.
11. Always make sure the Clear Lid is clamped securely in place before the motor is turned on. Do not unfasten Clamps while Juicer is in operation.
12. Be sure to press the ⏻(OFF) Button and unplug the Juicer from electrical outlet after each use. Make sure the Motor stops completely before disassembling.



13. Do not put your fingers or other objects into the Juicer opening while it is in operation. If food becomes lodged in opening, use Food Pusher or another piece of fruit or vegetable to push it down. When this method is not possible turn the motor off, unplug Juicer from electrical outlet, and disassemble Juicer to remove remaining food.
14. Do not use the appliance if the Filter Basket is damaged.

SAVE THESE INSTRUCTIONS
FOR HOUSEHOLD USE ONLY



ADDITIONAL IMPORTANT SAFEGUARDS

1. All users of this appliance must read and understand this Instruction Manual before operating or cleaning this appliance.
2. The cord to this appliance should be plugged into a 120V AC electrical outlet only.
3. Do not leave this appliance unattended during use.
4. If this appliance begins to malfunction during use, immediately press the ⏻(OFF) Button and unplug the cord. Do not use or attempt to repair the malfunctioning appliance.
5. If this appliance falls or accidentally becomes immersed in water, unplug it immediately. **Do not reach into the water!** Do not use this appliance after it has fallen into or becomes immersed in water.
6. To reduce the risk of injury to persons or property, never use this appliance in an unstable position.
7. Do not use this appliance for other than its intended use.



POLARIZED PLUG

This appliance has a polarized plug (one blade is wider than the other). To reduce the risk of electric shock, this plug is intended to fit into a polarized outlet only one way. If the plug does not fit fully in the outlet, reverse the plug. If it still does not fit, contact a qualified electrician. Do not attempt to modify the plug in any way.

SHORT CORD INSTRUCTIONS

A short power-supply cord is provided to reduce the risk resulting from becoming entangled in or tripping over a longer cord.

Do not use an extension cord with this product.

PLASTICIZER WARNING

CAUTION: To prevent Plasticizers from migrating from the finish of the counter top or table top or other furniture, place NON-PLASTIC coasters or place mats between the appliance and the finish of the counter top or table top.

Failure to do so may cause the finish to darken. Permanent blemishes may occur or stains can appear.

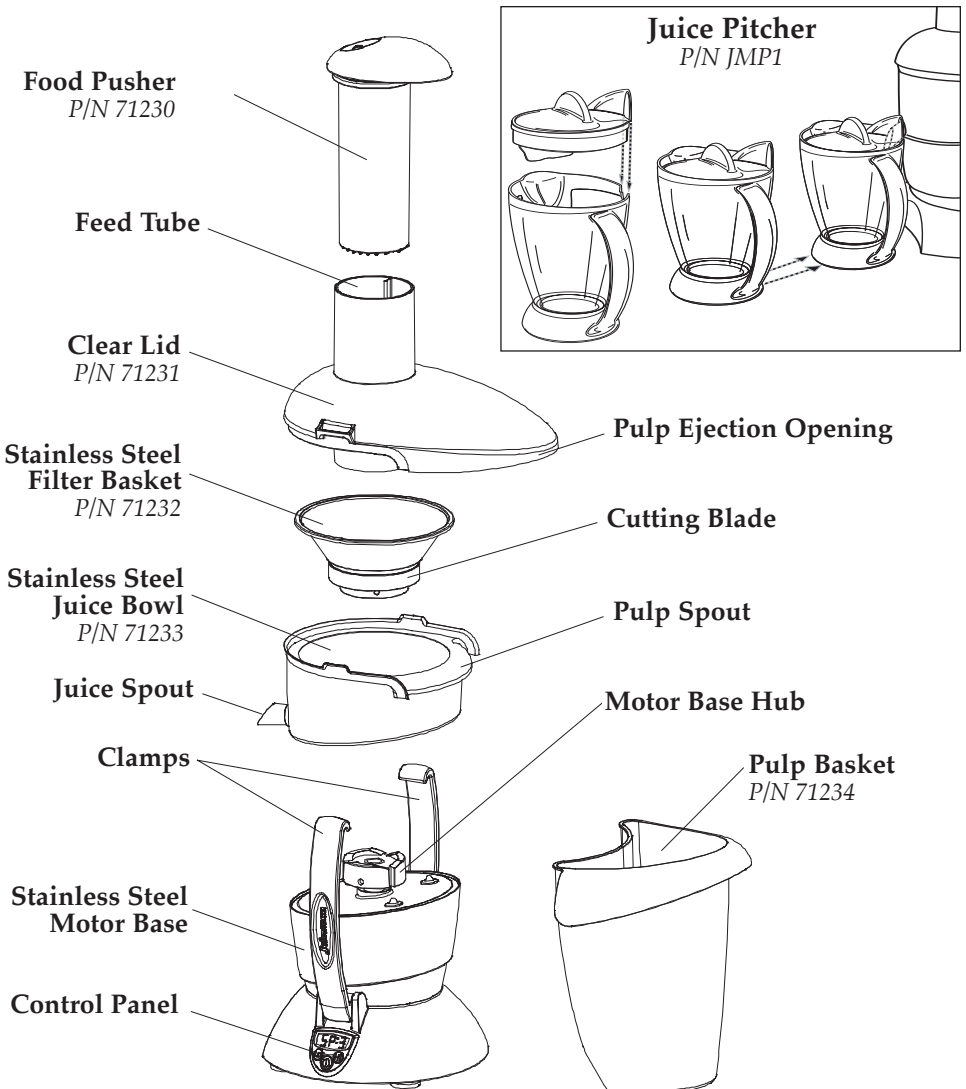
ELECTRIC POWER

If the electrical circuit is overloaded with other appliances, your appliance may not operate properly. It should be operated on a separate electrical circuit from other appliances.



GETTING TO KNOW YOUR JUICER

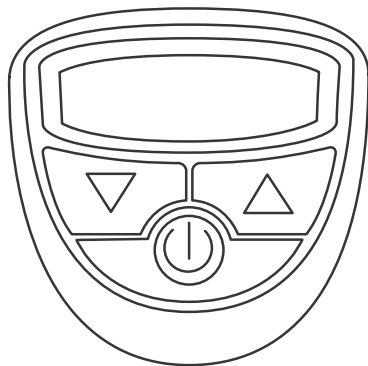
PRODUCT MAY VARY SLIGHTLY FROM ILLUSTRATIONS





CONTROL PANEL

This Juicer has a unique control panel, offering three speed options: HIGH, MEDIUM and LOW. These three speeds ensure optimal rpm to provide maximum juicing efficiency (efficiency describes the amount of juice extracted from your produce). Speeds are selected by pressing the UP/DOWN Arrow Buttons on the Control Panel.



HIGH SPEED: Best for **harder produce:** carrots, ginger-root, beets, and pineapple (with rind).
Screen displays: SP:3

MEDIUM SPEED: Best for **firm produce:** apples, melons, strawberries, and for leafy or stringy produce such as celery and greens.
Screen displays: SP:2
NOTE: This is the default speed setting -- The Juicer will automatically start up at SP:2 until an alternative speed is selected.

LOW SPEED: Best for **softer produce:** citrus, apples, grapes (with stems), melons, peaches (remove pit), and tomatoes. This speed setting is also recommended for ripe produce that has become soft.
Screen displays: SP:1

OFF: Press the (⏻) Button to pause or turn off the Juicer.



BEFORE FIRST USE

The Juicer comes almost completely assembled in the box. We suggest taking it apart and washing the removable parts in warm water with a biodegradable, non-abrasive liquid detergent before the first use. This will eliminate any traces of dust or residue from manufacturing or shipping.

NOTE: The Juicer may be shipped with a protective cardboard insert between the Feed Tube and Cutting Blade (in the Filter Basket). Remove this and any other protective packaging before using the Juicer.

CAUTION: *Never rinse or immerse the Motor Base in water or any other liquid.*

Refer to the ASSEMBLY and DISASSEMBLY INSTRUCTIONS. Make sure the Juicer is properly and completely assembled before use. **The Juicer will not turn on unless properly assembled.**



PREPARATION

Preparing Fruits & Vegetables for Juicing...

- Clean all produce thoroughly, using a natural bristle brush. If you are not using organic produce, we recommend using a biodegradable cleaner to help remove pesticide residue.
- Remove and discard the outer leaves of non-organic produce and peel any waxed fruit or vegetable.
- Trim away any discolored or bruised sections.
- The skin may be left on all produce (including pineapple and melons) except for oranges, grapefruit, and tangerines. The oil found in these skins tastes bitter and difficult to digest.
- Remove melon seeds when possible, as they may escape through the top of the Feed Tube while juicing. The pits of fruits such as cherries, pears, and peaches should also be removed.
- The Juicer is designed to make juicing easier with an over-sized Feed Tube to accommodate larger produce -- so feed most whole apples and oranges, tangerines, ginger, beets, pineapple or melons. Make sure produce can be fed comfortably into the Feed Tube. Use the Food Pusher to gently direct produce through the Feed Tube.

CAUTION: Never push produce into the Feed Tube with your fingers.

- Leafy greens, parsley, wheat grass, and sprouts should be bunched up into a small, tight ball and pushed through with the Food Pusher.
- Bananas are not suitable for juicing; a clear juice cannot be obtained from them and residue left in the machine can clog the micro-mesh filter screen.
- Produce such as apricots, plums, pears, peaches, and tomatoes should be firm for best results when juicing.

Refer to the "Fresh Juice Recipes & Menu Planner" for juice recipes, pulp recipes, sample menus, and tips on buying and cleaning your fruit.



OPERATING INSTRUCTIONS

- Make sure that the Juicer is completely and properly assembled. (See ASSEMBLY INSTRUCTIONS.)
- Make sure the Filter Basket is securely seated and the Pulp Basket is at the rear of the Juicer, ready to catch pulp.

~ Helpful Tip ~

To reduce cleaning time, line the Pulp Basket with a plastic produce bag (the kind you put your produce in at the grocery store).

- Place a Juice Pitcher or glass underneath the Juice Spout.
- Plug the Juicer into a 120V AC electrical outlet.
- Remove the Food Pusher from the Feed Tube.
- Place produce into the Feed Tube.
- To re-insert the Food Pusher into the Feed Tube, it is necessary turn the Food Pusher until the groove in the Food Pusher aligns with the rib on the Feed Tube. The Food Pusher's ribbed bottom edge directs food through the Feed Tube and Filter Basket.

TO TURN THE JUICER ON:

Press either of the UP/DOWN Arrow Buttons and begin juicing.

NOTE: You do not have to turn the machine off to change speeds. Simply press the UP/DOWN Arrow Buttons to select the speed appropriate for each type of produce being juiced. (Refer to Page 6 for suggested speed settings).

The Juicer will not operate if the Pulp Basket is not properly aligned against the base of the Juicer.

~ Helpful Tip ~

Try alternating the types of produce being juiced to ensure maximum efficiency.

TO TURN THE JUICER OFF:

Press the ⏻ (OFF) Button. Be sure to unplug the Juicer from the outlet when not in use.

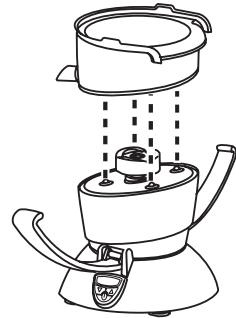


ASSEMBLY INSTRUCTIONS

ALWAYS MAKE SURE THE JUICER IS UNPLUGGED
BEFORE STARTING TO ASSEMBLE.

STEP ONE: Place Juice Bowl

Place Juice Bowl on top of the Motor Base so that the Juice Spout is to the front (over the intended part of the Juicer Base). Align the four grooves on the underside of Juice Bowl with the four posts on top of the Motor Base. Lower the Juice Bowl onto the Motor Base so that the grooves fit onto the posts, rotating slightly if necessary.



STEP TWO: Place Filter Basket

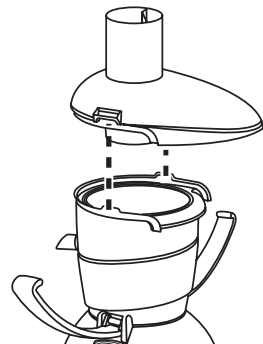
With both hands, grasp the rim of the Filter Basket and center it over the Motor Base Hub. Carefully lower the Filter Basket onto the Hub, rotating slightly until it drops into the proper position; then press firmly down on the rim of the Filter Basket to secure. (Be sure to apply pressure the both sides of the Filter Basket evenly to ensure proper seating.) When seated properly, the Filter Basket will spin freely and will not lift out of the Juice Bowl.

CAUTION: Use care when handling the Filter Basket; the Cutting Blades are very sharp!



STEP THREE: Place Clear Lid

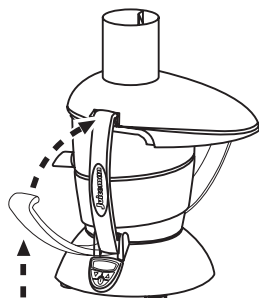
Place the Clear Lid onto the Juice Bowl so that the Pulp Ejection Opening on the Clear Lid is over the Pulp Spout on the Juice Bowl.





STEP FOUR: Lock Clamps

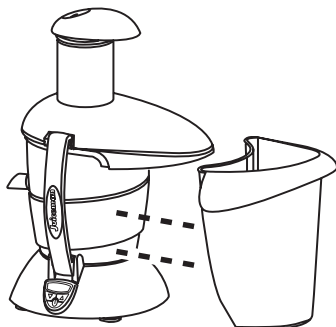
Rest the hook-end of the Clamp into position on the Clear Lid; then firmly pull down on the Clamp while pushing in on the hinge-end until it locks securely into place. Repeat for the opposite Clamp.



STEP FIVE: Position Pulp Basket

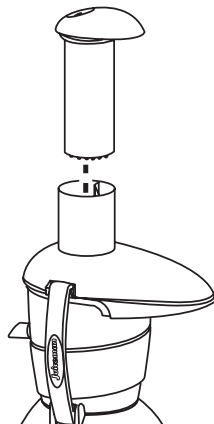
Place the Pulp Basket under the Clear lid beneath the Pulp Ejection Opening. The Pulp Basket will fit snugly against the side of the Motor Base.

NOTE: The Pulp Basket has an internal magnetic switch for added safety. *The Juicer will not operate if the Pulp Basket is not properly aligned against the base of the Juicer.*



STEP SIX: Store Food Pusher

Store the Food Pusher in the Feed Tube until you are ready to juice. To insert, rotate the Food Pusher until the groove in the Food Pusher is properly aligned with the rib in the Feed Tube.



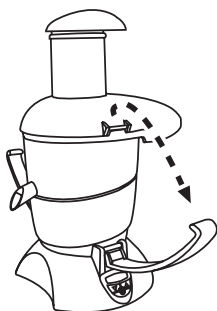


DISASSEMBLY INSTRUCTIONS

ALWAYS MAKE SURE THE JUICER IS UNPLUGGED
BEFORE STARTING TO DISASSEMBLE.

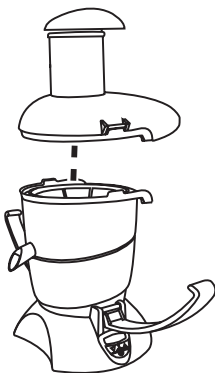
STEP ONE: Remove Clamps

Firmly grasp the hinge-end of the Clamp and pull out to unlock; then lift the top of the Clamp up/out to unhook from the Clear Lid. Repeat for the opposite Clamp.



STEP TWO: Remove Clear Lid

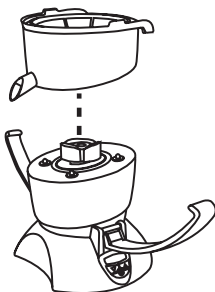
Grasp the Clear Lid by the Feed Tube; lift and remove from the Juice Bowl. Make sure to hold the Food Pusher in place if it is being stored inside the Feed Tube.



STEP THREE: Remove Juice Bowl

Grasp the sides of the Juice Bowl with both hands. With the Filter Basket still inside, carefully lift the Juice Bowl off of the Motor Base -- rotating slightly if necessary. The Filter Basket can then be removed from the Juice Bowl for easy cleaning.

CAUTION: Use care when handling Filter Basket; the Cutting Blades are very sharp!





USER MAINTENANCE INSTRUCTIONS

ALWAYS UNPLUG THE JUICER FROM THE OUTLET BEFORE ASSEMBLING OR REMOVING PARTS AND BEFORE CLEANING.

This appliance requires little maintenance. It contains no user serviceable parts. Do not try to repair it yourself. Any servicing requiring disassembly must be performed by a qualified appliance repair technician.

CLEANING YOUR JUICER

THE JUICER SHOULD BE CLEANED AFTER EVERY USE...

- Make sure that the Juicer is unplugged from the outlet; then follow the DISASSEMBLY INSTRUCTIONS.

- ***TO CLEAN THE MOTOR BASE:***

Do not immerse the Motor Base in water or spray it with water. Clean only by wiping with a damp sponge, cloth, or paper towel.

Using a sponge, wipe off the Motor Base, rubber feet and the underside of the Juicer. Use a damp toothbrush or cloth to clean juice from inside the Motor Base Hub (on top of the Motor Base).
THE JUICER SHOULD BE AIR-DRIED ONLY!

- All Juicer parts (except the Motor Base) are washable in warm, soapy water, using any liquid dishwashing detergent.
DO NOT USE ANY PRODUCTS CONTAINING AMMONIA OR SCOURING POWDERS -- These products will dull, scratch or mar the plastic surface.

- ***TO CLEAN THE CLEAR LID & JUICE BOWL:***

We recommend using a fruit and vegetable brush with natural fibers. *Do not use a metal brush or pad.*



- **TO CLEAN THE FILTER BASKET:**

Use a brush to make sure the tiny holes in the mesh filter are not clogged. This can be accomplished by holding the Filter Basket under a running faucet while brushing the mesh filter screen from both inside and outside the Filter Basket.

NOTE: Occasionally, the removable parts may be washed in a dishwasher, only if they are placed on the top shelf of the dishwasher. However, washing with warm (not hot) tap water on a daily basis should be sufficient.

~ Helpful Tip ~

The pulp from the Pulp Basket can be used in many different ways: baking breads, muffins, cakes, soup stocks, compressed facial packs and garden compost material.

REMOVING TOUGH STAINS

Due to the powerful staining properties of the carotenoids that are found in many vegetables, especially carrots, we suggest soaking the stained parts overnight in one of the following solutions:

- Biodegradable soap in enough warm water to cover Juicer parts.
- 1/4 cup bleach added to a sink full of warm water.
- 1 part warm water to 1 part cider vinegar.
- 1/2 small box baking soda in enough warm water to cover parts.

NEVER USE AMMONIA OR ABRASIVES!

After soaking overnight, lightly scrub with soft bristle brush and liquid detergent. NEVER SUBMERGE THE MOTOR BASE IN WATER OR OTHER LIQUID!



STORAGE

Store the Juicer in its box or in a clean, dry place. Never store the Juicer while it is still plugged in.

Always use the Cord Storage Wrap located on the underside of the Juicer. Never wrap cord tightly around appliance. Do not put any stress on cord where it enters the unit, as this could cause cord to fray and break.



TROUBLESHOOTING

SYMPTOM

POSSIBLE CORRECTION

Pulp builds up excessively in the back of the Lid.

Try juicing slower, as wet produce is more likely to build up in the Lid. To release pulp, lightly tap on the side of the Lid. Empty Pulp Basket if full.

Bottom of Feed Tube is damaged.

Filter Basket may not have been seated correctly, causing it to become unseated during use. Call Consumer Service at (800) 233-9054.

Filter Basket is difficult to:
-insert onto the Hub;
-remove from the Hub.

Snug seating is desirable. To insert, try seating the Filter Basket on a different Hub position. To remove, turn Juice Bowl in a clockwise direction.

Too much pulp builds up on Filter Basket.

This may be an isolated situation resulting from the varied texture and moisture content of the produce. Stop juicing, scrape off pulp using a brush with natural fibers, and begin again, alternating types of produce.

Excessive noise or vibrations occur after Juicer is turned on.

Pulp may have built up on the Filter Basket. Clean the Filter Basket and try alternating different types of produce while juicing. **Note:** Because of the Juicer's powerful motor, a small amount of noise and/or vibration is normal when the Juicer is turned on and as it comes to a complete stop. All Juicers will sound slightly different.

Juice sprays out of the Spout.

Juice the produce as slowly as possible. Keep the Pulp Basket emptied for good air flow through machine.

Juice leaks between Juice Bowl and Lid.

Juice slowly so that the Filter Basket does not fill up too quickly with juice. Keep Pulp Basket emptied to allow good air flow through the machine.

Pulp in juice.

Juice slowly to avoid excessive pulp buildup inside the Lid and Juice Bowl.



TROUBLESHOOTING (Continued)

SYMPTOM	POSSIBLE CORRECTION
<i>Inside rim of Juice Bowl is worn or chipped (inside lower rim or inside upper rim).</i>	Improper fit between the Filter Basket and Hub can cause parts of the Juice Bowl to rub against the Filter Basket. If this is the case, call Consumer Service at (800) 233-9054.
<i>Juicer stopped while juicing.</i>	Try a different wall outlet. Also let Juicer sit for about an hour without turning it on; moisture may have collected on the circuit board, causing machine to shut off. Make sure that the Pulp Basket is properly aligned against the Juicer so that the internal magnetic switch is engaged. If situation is not resolved, call Consumer Service at (800) 233-9054.
<i>Juicer does not turn ON.</i>	Try a different wall outlet. Also, try using both the UP/DOWN Arrow Buttons. Check the Juicer Lid, Filter Basket, and Juice Bowl to see if they are properly seated, making sure that the column is completely aligned and the safety switch is engaged. Make sure that the Pulp Basket is properly aligned against the Juicer so that the internal magnetic switch is engaged.



NOTES

LIMITED ONE-YEAR WARRANTY

Warranty Coverage: This product is warranted to be free from defects in materials or workmanship for a period of one (1) year from the original purchase date. This product warranty is extended only to the original consumer purchaser of the product and is not transferable. For a period of one (1) year from the date of original purchase of the product, our Repair Center will, at its option, either (1) repair the product or (2) replace the product with a reconditioned comparable model. These remedies are the purchaser's exclusive remedies under this warranty.

Warranty Service: To obtain warranty service, you must call our warranty service number at 1-800-233-9054 for return instructions on how to deliver the product, in either the original packaging or packaging affording an equal degree of protection to the Repair Center specified below. You must enclose a copy of your sales receipt or other proof of purchase to demonstrate eligibility for warranty coverage.

To return the appliance, ship to:

ATTN: Repair Center
708 South Missouri Street
Macon, MO 63552 USA

To contact us, please write to, call, or email:

Consumer Relations Department
PO Box 7366
Columbia MO 65205-7366 USA
1-800-233-9054
E-mail:consumer_relations@toastmaster.com

What Is Not Covered: This warranty does not cover damage resulting from misuse, accident, commercial use, improper service or any other damage caused by anything other than defects in material or workmanship during ordinary consumer use. This warranty is invalid if the serial number has been altered or removed from the product. This warranty is valid only in the United States and Canada.

LIMITATION ON DAMAGES: THERE SHALL BE NO LIABILITY FOR ANY INCIDENTAL OR CONSEQUENTIAL DAMAGES FOR BREACH OF ANY EXPRESS OR IMPLIED WARRANTY OR CONDITION ON THIS PRODUCT.

DURATION OF IMPLIED WARRANTIES: EXCEPT TO THE EXTENT PROHIBITED BY APPLICABLE LAW, ALL IMPLIED WARRANTIES AND CONDITIONS, INCLUDING, WITHOUT LIMITATION, IMPLIED WARRANTIES AND CONDITIONS OF MERCHANTABILITY AND FITNESS FOR A PARTICULAR PURPOSE OR USE ON THIS PRODUCT ARE LIMITED IN DURATION TO THE DURATION OF THIS WARRANTY.

Some jurisdictions do not allow the exclusion or limitation of incidental or consequential damages, or allow limitations on how long an implied warranty lasts, so the above limitations or exclusions may not apply to you. This warranty gives you specific legal rights and you may have other rights under the laws of your jurisdiction.

For more information on our products, visit our website: www.maxim-toastmaster.com.

Free Manuals Download Website

<http://myh66.com>

<http://usermanuals.us>

<http://www.somanuals.com>

<http://www.4manuals.cc>

<http://www.manual-lib.com>

<http://www.404manual.com>

<http://www.luxmanual.com>

<http://aubethermostatmanual.com>

Golf course search by state

<http://golfingnear.com>

Email search by domain

<http://emailbydomain.com>

Auto manuals search

<http://auto.somanuals.com>

TV manuals search

<http://tv.somanuals.com>