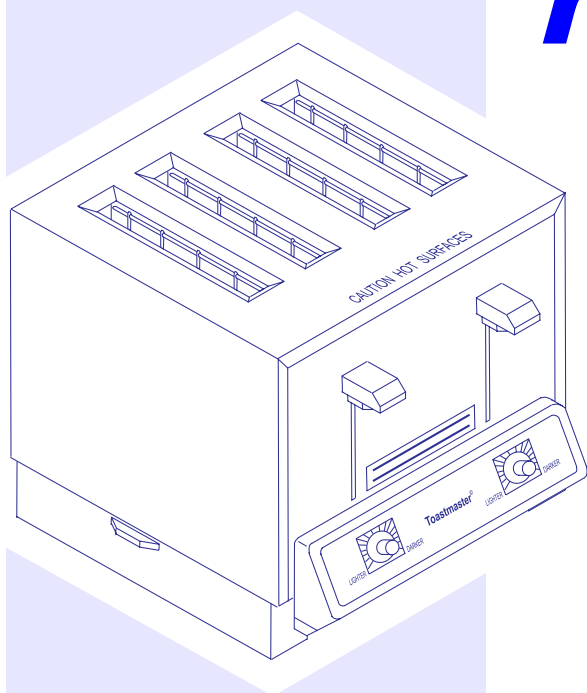




TP44/TP120/BT120 (Eng)

parts manual

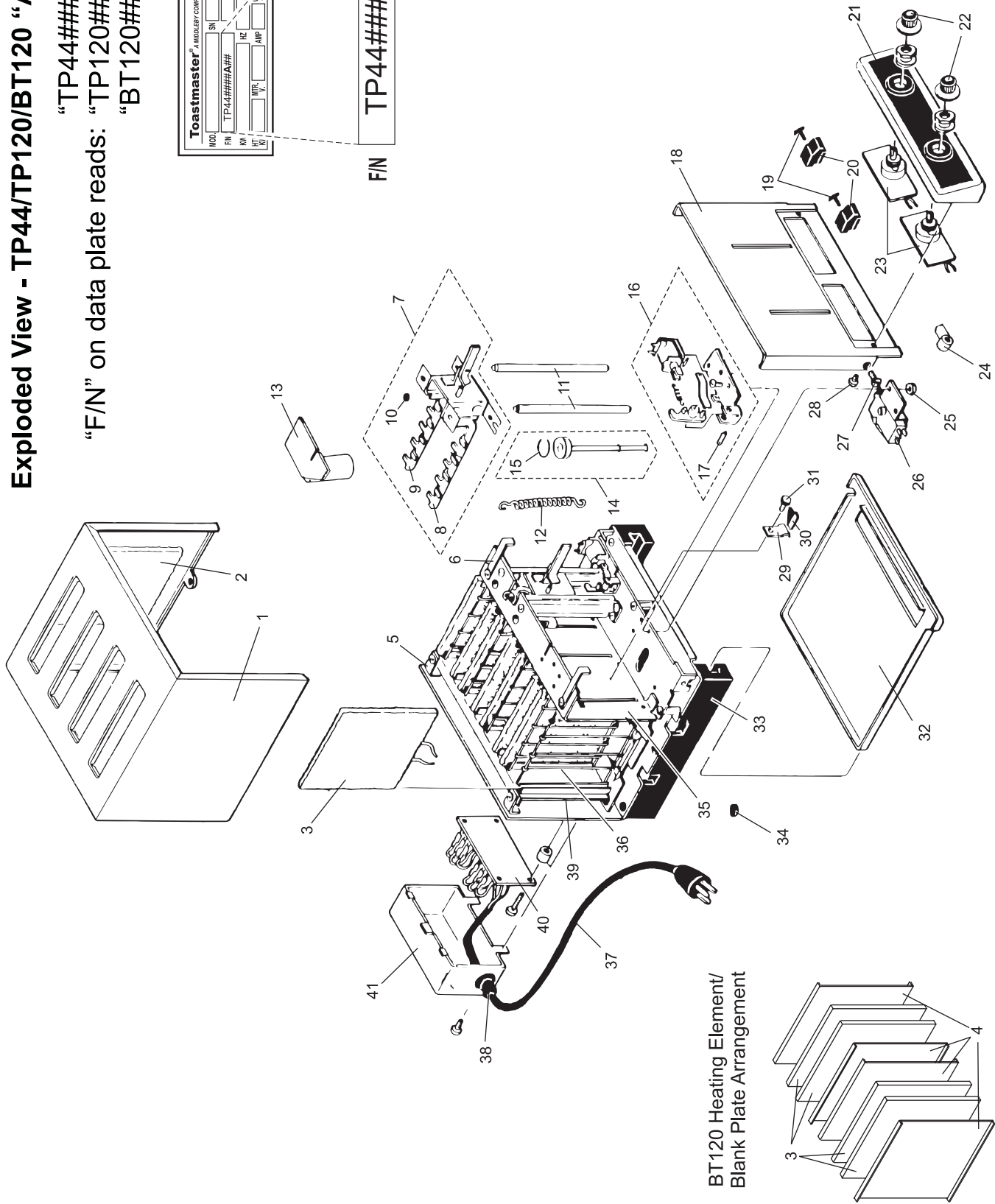
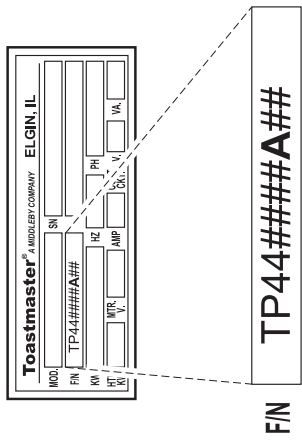


**MODEL TP44/TP120/BT120
SOLID STATE SLOT
TOASTERS**

P/N 39297
Rev. C • V1 • 3/99

Exploded View - TP44/TP120/BT120 "A" -version

"TP44####A##"
 "F/N" on data plate reads: "TP120####A##"
 "BT120####A##"



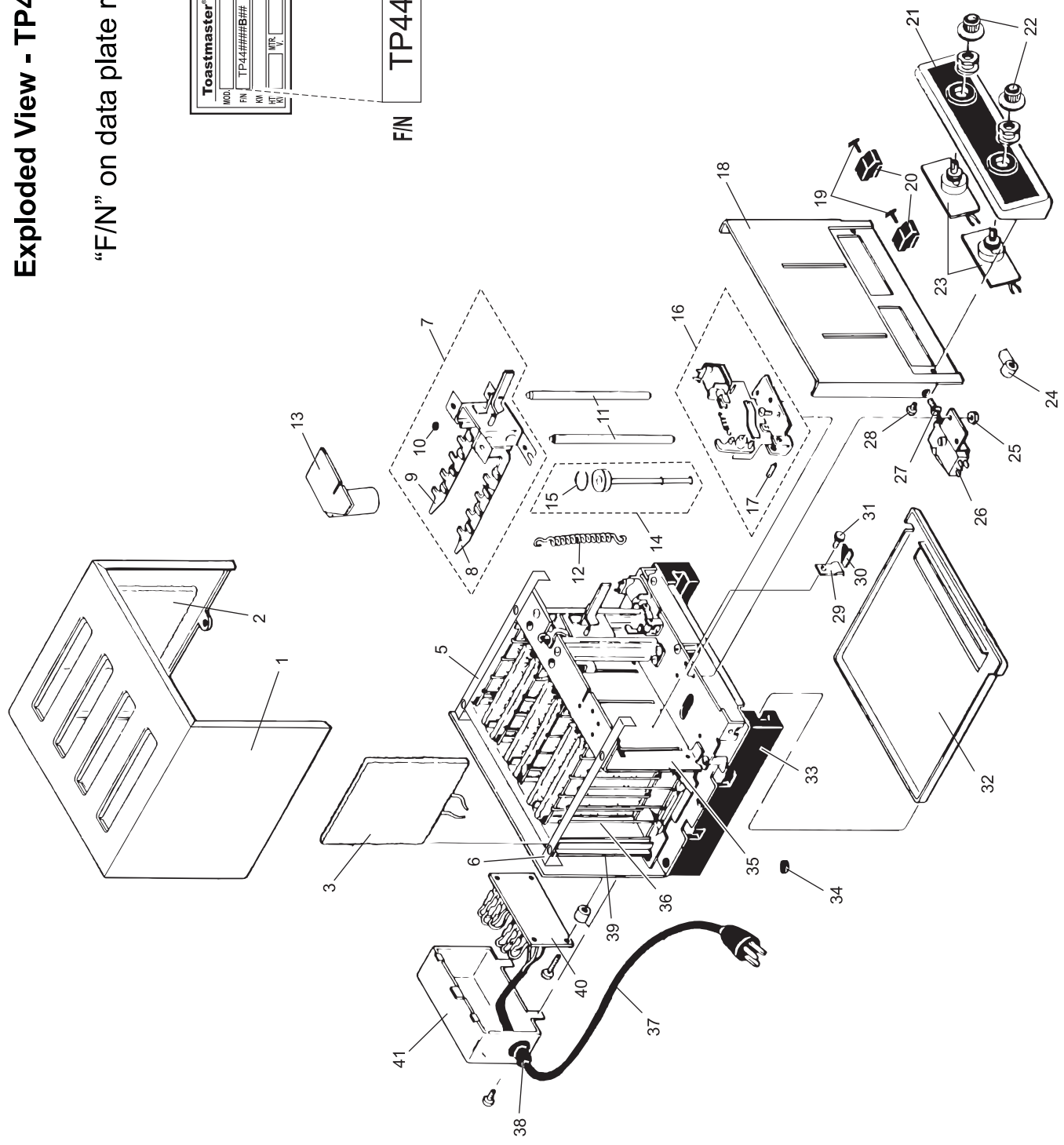
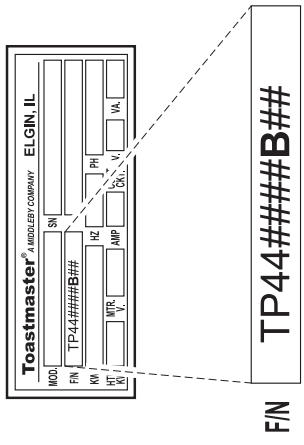
Parts Listing - TP44/TP120/BT120 "A"-Version

ITEM	DESCRIPTION	TP44		TP120		BT120		ITEM	DESCRIPTION	TP44		TP120		BT120	
		QTY.	P/N	QTY.	P/N	QTY.	P/N			QTY.	P/N	QTY.	P/N	QTY.	P/N
1	ASSY, TOP CVR & INSULATION	1	7604476	1	7604476	1	7604476	24	WIRE CLAMP, PLASTIC	1	3101206	1	3101206	1	3101206
2	INSULATION PANEL (inc. w/item 1)	2	8500126	2	8500126	2	8500126	25	NUT, #6-32 KEPS	4	2001327	4	2001327	4	2001327
3	ELEMENT - 120V, 325W	8	3001806	--	--	--	--	26	ASSY, SWITCH & BRACKET, RT	1	7604713	1	7604713	1	7604713
3	ELEMENT - 120V, 275W	--	--	8	3001805	--	--	26	ASSY, SWITCH & BRACKET, LT	1	7604299	1	7604299	1	7604299
3	ELEMENT - 120V, 450W	--	--	--	--	4	3001878	27	SCREW, 8-32 X 3/8" FLAT HEAD	2	21276-0046	2	21276-0046	2	21276-0046
4	PLATE, ELEMENT REPLACEMENT	--	--	--	--	4	7006836	28	SCREW, HEX 6 X 3/8" SHT METAL	2	B301A8861	2	B301A8861	2	B301A8861
5	ALIGNING BRACKET, REAR	2	7001545	2	7001545	2	7001545	29	SENSOR BRACKET	2	7001563	2	7001563	2	7001563
6	ALIGNING BRACKET, FRONT	2	7002703	2	7002703	2	7002703	30	SWITCH ACTUATOR BRACKET	2	7606066	2	7606066	2	7606066
7	ASSY, SUPPORT & ELEVATOR	2	7606059	2	7606059	2	7606059	31	SCREW, 6 X 3/8" SHEET METAL	2	2000634	2	2000634	2	2000634
8	BREAD SUPPORT, LT (inc. w/item 7)	1	7001546	1	7001546	1	7001546	32	CRUMB TRAY	1	7001948	1	7001948	1	7001948
9	BREAD SUPPORT, RT (inc. w/item 7)	1	7001547	1	7001547	1	7001547	33	BASE, BLACK	2	3102164	2	3102164	2	3102164
10	BUSHINGS (inc. w/item 7)	4	7002277	4	7002277	4	7002277	34	PAD, RUBBER FOOT	4	KIDS268	4	KIDS268	4	KIDS268
11	VERTICAL SHAFT	4	7002276	4	7002276	4	7002276	35	HEAT SHIELD, FRONT	1	7606071	1	7606071	1	7606071
12	SPRING	2	3103246	2	3103246	2	3103246	36	ASSY, ROD & GUARD	8	7604290	8	7604290	8	7604290
13	ASSY, BRACKET & CYLINDER	2	7606061	2	7606061	2	7606061	37	ASSY, CORD/PLUG, NEMA 6-15P	1	1D3S5	--	--	--	--
14	ASSY, PISTON	2	7606063	2	7606063	2	7606063	37	ASSY, CORD/PLUG, NEMA 6-20P (Canada)	1	C620	--	--	--	--
15	PISTON RING (inc. w/item 14)	2	7002280	2	7002280	2	7002280	37	ASSY, CORD/PLUG, NEMA 5-20P	--	--	1	31785	1	31785*
16	ASSY, SOLENOID & LATCH	2	7606065	2	7606065	2	7606065	37	ASSY, CORD/PLUG, NEMA 5-30P (Canada)	--	--	1	C530	--	--
17	ROLL PIN (inc. w/item 16)	1	2002510	1	2002510	1	2002510	38	CONNECTOR, 3/8", STRAIGHT	1	3BB2C8735	1	3BB2C8735	1	3BB2C8735
18	FRONT PLATE	1	7005240	1	7005240	1	7005240	39	HEAT SHIELD, REAR	1	7604284	1	7604284	1	7604284
19	SCREW, FRONT KNOB	2	KIDS213	2	KIDS213	2	KIDS213	40	TERMINAL BOARD	1	7604289	1	7604289	1	7604289
20	KNOB, OPERATING	2	3101757	2	3101757	2	3101757	41	COVER, REAR ELECTRICAL	1	7001589	1	7001589	1	7001589
21	PANEL, CONTROL ENCLOSURE	1	7604286	1	7604286	1	7604286	--	MANUAL, OWNERS OP. TP44/TP120	1	3102563	1	3102563	1	3102563
22	KNOB, TOASTER CONTROL	2	2100062	2	2100062	2	2100062	--	UPDATE, BT120 FOR TP44/TP120 MNL	--	--	--	--	1	39299
23	TIMER, 120V	2	7606984	--	--	--	--								
23	TIMER, 120V	--	--	2	7606512	2	7606512								

* Model BT120 Toasters use the NEMA 5-20P plug in both U.S.A. and Canadian installations.

Exploded View - TP44/TP120 "B"-version

"F/N" on data plate reads: "TP44####B##"
 "TP120####B##"



Parts Listing - TP44/TP120 "B"-Version

ITEM	DESCRIPTION	TP44		TP120		ITEM	DESCRIPTION	TP44		TP120	
		QTY.	P/N	QTY.	P/N			QTY.	P/N	QTY.	P/N
1	ASSY, TOP CVR & INSULATION	1	7604476	1	7604476	25	NUT, #6-32 KEPS	4	2001327	4	2001327
2	INSULATION PANEL (inc. w/item 1)	2	8500126	2	8500126	26	ASSY, SWITCH & BRACKET, RT	1	7604713	1	7604713
3	ELEMENT - 120V, 325W	8	3001806	--	--	26	ASSY, SWITCH & BRACKET, LT	1	7604299	1	7604299
3	ELEMENT - 120V, 275W	--	--	8	3001805	27	SCREW, 8-32 X 3/8" FLAT HEAD	2	21276-0046	2	21276-0046
5	STRINGER SUPPORT SPACER, RT	1	34455	1	34455	28	SCREW, HEX 6 X 3/8" SHT METAL	2	B301A8861	2	B301A8861
6	STRINGER SUPPORT SPACER, LT	1	32523	1	32523	29	SENSOR BRACKET	2	7001563	2	7001563
7	ASSY, SUPPORT & ELEVATOR	2	32540	2	32540	30	SWITCH ACTUATOR BRACKET	2	7606066	2	7606066
8	BREAD SUPPORT, LT (inc. w/item 7)	1	32541	1	32541	31	SCREW, 6 X 3/8" SHEET METAL	2	2000634	2	2000634
9	BREAD SUPPORT, RT (inc. w/item 7)	1	32542	1	32542	32	CRUMB TRAY	1	7001948	1	7001948
10	BUSHINGS (inc. w/item 7)	4	7002277	4	7002277	33	BASE, BLACK	2	3102164	2	3102164
11	VERTICAL SHAFT	4	7002276	4	7002276	34	PAD, RUBBER FOOT	4	KIDS268	4	KIDS268
12	SPRING	2	3103246	2	3103246	35	HEAT SHIELD, FRONT	1	32535	1	32535
13	ASSY, BRACKET & CYLINDER	2	7606061	2	7606061	36	ASSY, ROD & GUARD	8	32527	8	32527
14	ASSY, PISTON	2	7606063	2	7606063	37	ASSY, CORD/PLUG, NEMA 6-15P	1	1D3S5	--	--
15	PISTON RING (inc. w/item 14)	2	7002280	2	7002280	37	ASSY, CORD/PLUG, NEMA 6-20P (Canada)	1	C620	--	--
16	ASSY, SOLENOID & LATCH	2	7606065	2	7606065	37	ASSY, CORD/PLUG, NEMA 5-20P	--	--	1	31785
17	ROLL PIN (inc. w/item 16)	1	2002510	1	2002510	37	ASSY, CORD/PLUG, NEMA 5-30P (Canada)	--	--	1	C530
18	FRONT PLATE	1	7005240	1	7005240	38	CONNECTOR, 3/8", STRAIGHT	1	3BB2C8735	1	3BB2C8735
19	SCREW, FRONT KNOB	2	KIDS213	2	KIDS213	39	HEAT SHIELD, REAR	1	34758	1	34758
20	KNOB, OPERATING	2	3101757	2	3101757	40	TERMINAL BOARD	1	32323	1	32323
21	PANEL, CONTROL ENCLOSURE	1	7604286	1	7604286	41	COVER, REAR ELECTRICAL	1	32524	1	32524
22	KNOB, TOASTER CONTROL	2	2100062	2	2100062	--	ASSY, CHASSIS BOTTOM & BACK	1	33309	1	33309
23	TIMER, 120V	2	7606984	--	--	--	ASSY, CHASSIS TOP	1	33310	1	33310
23	TIMER, 120V	--	--	2	7606512	--	MANUAL, OWNERS OP. TP44/TP120	1	3102563	1	3102563
24	WIRE CLAMP, PLASTIC	1	3101206	1	3101206						



Middleby Cooking Systems Group • 1400 Toastmaster Drive • Elgin, IL 60120 • (847)741-3300 • FAX (847)741-4406

Middleby Corp 24-Hour Service Hotline 1-800-238-8444

www.middleby.com

Free Manuals Download Website

<http://myh66.com>

<http://usermanuals.us>

<http://www.somanuals.com>

<http://www.4manuals.cc>

<http://www.manual-lib.com>

<http://www.404manual.com>

<http://www.luxmanual.com>

<http://aubethermostatmanual.com>

Golf course search by state

<http://golfingnear.com>

Email search by domain

<http://emailbydomain.com>

Auto manuals search

<http://auto.somanuals.com>

TV manuals search

<http://tv.somanuals.com>