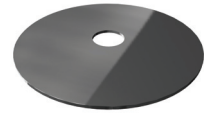

TomTom RIDER

14 USB cable



15 CD for Microsoft Windows® or Apple Macintosh®.



16 Bluetooth™ headset module and headset cable



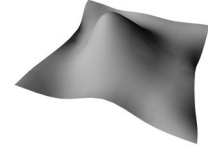
17 Helmet headset



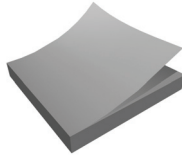
18 Standard headset



19 Screen cloth



20 Documentation pack



21 Your product code card



Chapter 2

Before you start...

Backup your TomTom RIDER

It's always a good idea to make a backup of the contents of your TomTom RIDER. You can make a backup using TomTom HOME.

For more information about TomTom HOME, see **Using TomTom HOME** on page 65.

Secure your TomTom RIDER

Set a password for your TomTom RIDER so that only you can use it. Every time you start your RIDER you will have to enter your password.

To set your password, run your RIDER using TomTom HOME. From the Preferences menu, click **Set owner** to set a password.

To set the password, you have to run your RIDER using TomTom HOME. You can then use TomTom HOME to set the password. To set a password on your device, do the following:

1. Connect your RIDER to your computer and switch it on.
2. Start TomTom HOME if it does not start automatically.

If you do not have TomTom HOME installed, insert the CD that came with your RIDER to install it.

Alternatively, you can download TomTom HOME from www.tomtom.com. Make sure you always have the latest version of TomTom HOME. For more information about TomTom HOME, see **Using TomTom HOME** on page 65.

3. In the Planning section, select your RIDER.

A picture of your RIDER is shown in the main section of TomTom HOME.

4. Click the On/Off button on the picture of your RIDER to switch it on in TomTom HOME.

Your RIDER starts in TomTom HOME. You can now set the password on your RIDER using TomTom HOME. Don't unplug your RIDER, just use it as you normally would by clicking the buttons shown on your computer.

5. From the Main Menu in your device, click **Change preferences**.

6. Click **Set owner**. You may have to click the arrow until you reach the page where **Set owner** is shown.



Set owner

If you cannot find the button **Set owner**, make sure that all buttons are shown in your RIDER. Tap the button **Show ALL menu options**. All buttons will now be shown.

You can now set the password for your RIDER. You can also set your name and address, which will then be shown when your RIDER starts up.

Take care of your TomTom RIDER

It is important to take care of your RIDER and to clean it correctly.

- Use a soft cloth to wipe the screen of your RIDER; do not use any liquid cleaners.
- If your RIDER gets wet, dry it with a soft cloth.
- Do not open the casing of your RIDER under any circumstances. Doing so may be dangerous and will invalidate your warranty.
- Do not use the memory card (SD card) with any device other than a TomTom device. Other devices may damage the memory card.
- Do not expose your RIDER to high or low temperatures, which can cause permanent damage. For example, don't leave it in the car on hot summer days or during cold winter nights.

Chapter 3

Using your TomTom RIDER

Switching on

1. Open the compartment on the bottom of your TomTom RIDER.
2. Push the memory card into the memory card slot.



3. Press and hold the On/Off button for 2 seconds, or until your TomTom RIDER starts.

The first time you switch on your TomTom RIDER, it may take up to 20 seconds to start. To switch off your TomTom RIDER, press and hold the On/Off button for 2 seconds.

Setting up

First, you have to answer a few questions to set up your device and your Bluetooth headset module. Answer the questions by tapping the screen. You will use the touchscreen for everything you do with your TomTom RIDER.

Follow the instructions to establish a Bluetooth connection between your TomTom RIDER and your Bluetooth headset module.

See the Bluetooth headset module section below for more information about your Bluetooth headset module.

Once you have answered the questions, your TomTom RIDER will display the Driving View.

The screen is shown in black and white until your TomTom RIDER locates your current position. Once this is done, the Driving View is shown in full colour.

Locating your current position

Your TomTom RIDER must be outside to be able to locate your current position. The first time you start your RIDER, it takes up to 5 minutes for the device to find your current position.

In future, your position will be found much faster, normally within a few seconds. If your RIDER takes longer than 5 minutes to locate your current

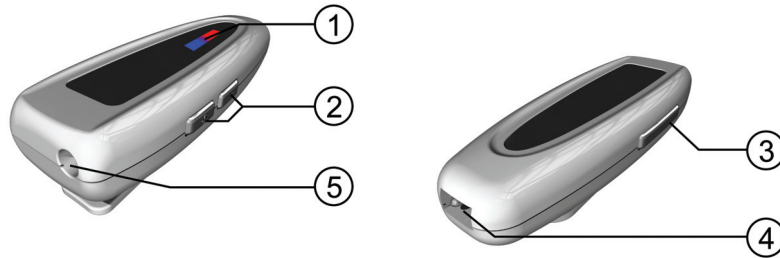
position, make sure that you are in an open place without tall buildings or trees around you.

Your RIDER does not transmit your location, so others cannot use it to track you while you are driving.

Note: Before driving with your TomTom RIDER, we recommend that you charge it fully using the home charger.

TomTom RIDER uses a GPS receiver to locate your current position. For more information about GPS, see **How does navigation work?** on page 67.

Bluetooth headset module



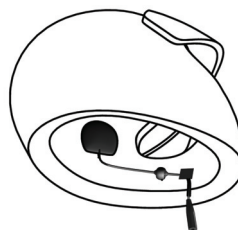
1. Indicators
2. Volume controls
3. On/Off button
4. Charging connector
5. Headset connector

Before you can use your Bluetooth headset module with the helmet headset, you must charge the headset module using the home charger.

Connect the headset cable to the Bluetooth headset module and then to the helmet headset or standard headset.



Attach the Velcro pads provided to the inside of your helmet. These hold the helmet headset in place.



To turn your Bluetooth headset module on, press and hold the On/Off button until the blue indicator flashes 4 times.

To turn your Bluetooth headset module off, press and hold the On/Off button until the red indicator flashes 4 times.

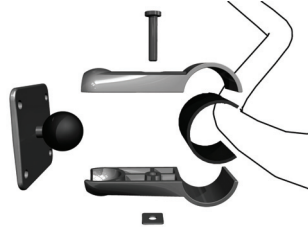
If you did not establish a Bluetooth connection between your Bluetooth headset module and your TomTom RIDER when you first turned your RIDER on, you can establish the connection at any time.

From the Main Menu, tap **Change Preferences**. Tap **Connect to headset** and follow the instructions to establish the connection.

2. Wrap the piece of rubber provided around the handlebars to make the handlebars thick enough for the Handlebar Mount. Cut the piece of rubber to adjust the thickness.

Note: *The piece of rubber helps prevent vibration and stops the Handlebar Mount from slipping while you are driving.*

3. Place the Handlebar Mount around the handlebars and over the piece of rubber.



4. Screw the Handlebar mount together tightly using the Allen key provided.
5. Screw the Holder to the Handlebar Mount using four of the small screws included with the mounting kit.



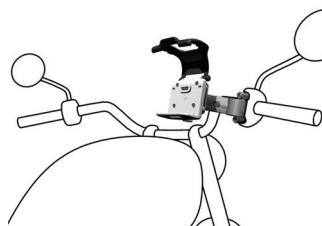
If your TomTom RIDER is not in a comfortable position, unscrew the Handlebar Mount slightly and adjust the angle of the mount and the holder. Then screw the Handlebar Mount together tightly again.

You can now place your TomTom RIDER in the Holder. See this section: **Placing your TomTom RIDER in the Holder** on page 15.

Handlebar adaptor

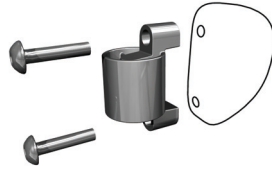


The Handlebar Adaptor is secured by bolts next to the grip, as shown.



To use this mount, follow these steps:

1. Carefully remove the bolts that hold the grip in place. Do not remove the grip from the handlebars.
2. Place the Handlebar Adaptor over the bolt holes.
3. Use the extra-long bolts provided to attach the Handlebar Adaptor and the grip to the handlebars. Use an Allen key (not provided) to tighten the bolts.

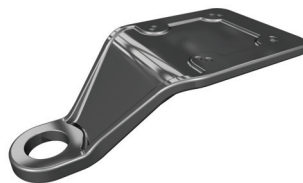


4. Attach the Handlebar Mount to the Handlebar Adaptor. Follow steps 2 - 4 in the section **Handlebar Mount** above.



You can now place your TomTom RIDER in the Holder. See this section: **Placing your TomTom RIDER in the Holder** on page 15.

Mirror Mount



The Mirror Mount is held in place by the wing mirror. If your motorcycle or scooter has no mirrors but has the bolt holes for a wing mirror, you can still use the Mirror Mount.

To use this mount, follow these steps:

1. Unscrew one of the wing mirrors on your motorcycle.
2. Place first the rubber washer, then the Mirror Mount and finally the metal washer over the bolt hole, as shown in the diagram.



Note: The washers help to prevent the mirror mount from moving or from being damaged. Select the diameter of the washers according to the diameter of the bolt hole.

3. Screw the wing mirror back into place. The wing mirror holds the Mirror Mount in place.

Note: If you have only the bolt holes for a wing mirror, use one of the bolts provided to hold the Mirror Mount in place. Select the diameter of the bolt according to the diameter of the bolt hole.

4. Screw the Adhesive Mount to the Mirror Mount, using four of the small screws included with the mounting kit.



5. Screw the Holder to the Adhesive Mount using four of the small screws included with the mounting kit.



You can now place your TomTom RIDER in the Holder. See this section: **Placing your TomTom RIDER in the Holder** on page 15.

Adhesive Mount



Use the Adhesive Mount if you are unable to use any of the other mounts, or if you want to place your TomTom RIDER in a position that is not possible using the other mounts.

Attach this mount only to a part of your motorcycle that is strong enough to hold the mount, the Holder and your RIDER.

Note: *It is very difficult to remove the Adhesive Mount.*

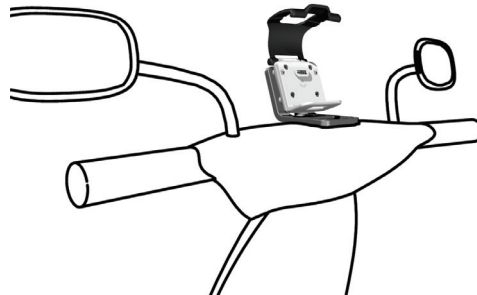
Think carefully about where you want to attach the Adhesive Mount. Clean the position you have chosen thoroughly and make sure that you remove any grease or dirt.

To use this mount, follow these steps:

1. Attach the adhesive pad to the Adhesive Mount.
2. Press and hold the Adhesive Mount in the position you have chosen.
3. Screw the Holder to the Adhesive Mount using four of the small screws included with the mounting kit.



You can now place your TomTom RIDER in the Holder. See this section:
Placing your TomTom RIDER in the Holder on page 15



Placing your TomTom RIDER in the Holder

1. Open the Holder and place the bottom edge of your TomTom RIDER into the Holder first.



Make sure that the two teeth on the bottom of the Holder meet the two connections on your RIDER. If your RIDER is not placed in the Holder correctly, it may fall out while you are driving.

2. Push your RIDER firmly into place.

3. Close the Holder. Make sure that your RIDER is held firmly in place.

You are now ready to make your first journey with your TomTom RIDER.

Battery cable

The battery cable can optionally be used to power and charge your TomTom RIDER from your motorcycle battery.

Note: *If you are unsure about setting up the battery cable, consult your local motorcycle garage.*

Connect the battery cable connector to the power connector on the holder.



Connect the red battery cable to the switched positive 12 volt power supply on your motorcycle and the black battery cable to the ground supply on your motorcycle.

Make sure that the battery cable is secured safely to your motorcycle. It must not hang from the frame or interfere with the motorcycle in any way. Make sure that it is also not in contact with any areas of the motorcycle that become hot and may melt the cable.

Taking care of your TomTom RIDER

It is important to take care of your RIDER and to clean it correctly.

- Use the screen cloth provided to wipe the screen of your RIDER; do not use any liquid cleaners.
- Only open the compartment that contains the memory card slot when you are indoors. Do not open the compartment when your RIDER is wet.
- When carrying your RIDER, always use the RIDER case provided.
- If your RIDER gets wet, dry it with a soft cloth.
- Do not open the casing of your RIDER under any circumstances.
- Do not use the memory card (SD card) with any device other than your RIDER. Other devices may damage the memory card.

Chapter 5

Making your first journey

Planning a route with TomTom RIDER is very simple. To plan your first route, follow the steps below.

Note: You should always plan your journeys before you start driving. It is dangerous to plan routes when you are already moving.

1. Tap the screen to bring up the main menu.
2. Tap **Navigate to...**



For your first journey, we will navigate to an address.

3. Tap **Address**.

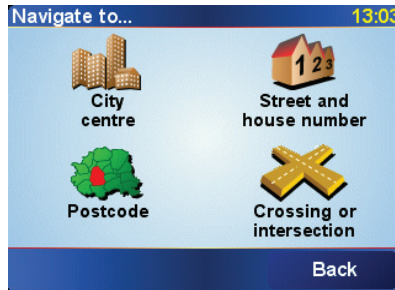


When you enter an address, you can choose from four options:

- **City centre** - tap this button to set your destination as the centre of a city or town.
- **Street and house number** - tap this button to set an exact address as your destination.
- **Postcode** - tap this button to enter a postcode as your destination (fully supported only in UK and the Netherlands).

Note: You can enter a postcode for any country. In the UK and the Netherlands, postcodes are detailed enough to identify a house on their own. In other countries you can enter a postcode to identify a town or area. You will then have to enter a street and house number.

- **Crossing or intersection** - tap this button to set your destination as the point where two streets meet.



For your first journey, we will enter an exact address.

4. Tap **Street and house number**.
5. Start to type the name of the town where you want to go.

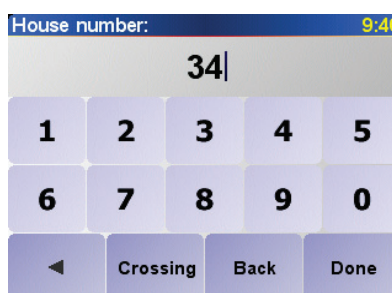


As you type, the names of the towns that match what you have typed are shown. When your destination is shown in the list, tap the name of the town to set the destination.

6. Start to type the name of the street.

As with the name of the town, the names of the streets that match what you have typed are shown. When your destination is shown in the list, tap the name of the street to set the destination.

7. Now enter the house number of your destination and then tap **Done**.



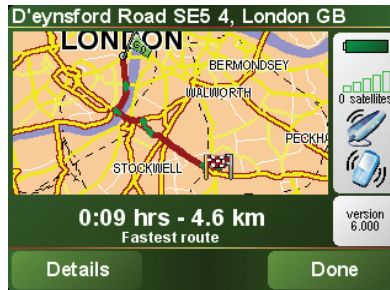
8. RIDER asks you whether you need to arrive at a particular time.



Tap **YES** to enter an arrival time. RIDER shows you whether you will arrive on time. For more information, see **Arrival times** on page 19.

The route is then calculated by your TomTom RIDER.

9. When the route has been calculated, tap **Done**.



TomTom RIDER will immediately start guiding you to your destination with spoken instructions and visual instructions on the screen.

You should plan your route before you start driving. It is not possible to plan the route in this much detail once you start moving. While you are driving, only the driving menu is displayed. For more information, see this chapter: **Menus** on page 25.

Note: Before you can plan a route in this way, TomTom RIDER must first locate your current position.

Arrival times

When you plan a route, your RIDER asks you if you need to arrive by a particular time:



Tap **YES** to enter an arrival time.

Your RIDER calculates your arrival time and shows you whether you will arrive on time. Your arrival time is constantly recalculated during your journey.

The status bar shows whether you will arrive on time or late, as shown below:

+55 min

You will arrive 55 minutes before the arrival time you entered.

If the estimated arrival time is more than five minutes before the time you entered, it is shown in green.

+3 min

You will arrive 3 minutes before the arrival time you entered.

If the estimated arrival time is less than 5 minutes before the time you entered, it is shown in yellow.

-19^{min}

You will arrive 19 minutes late.

If the estimated arrival time is later than the time you entered, it is shown in red.

When would I enter an arrival time?

If you have an appointment, you can enter the time of your appointment as your arrival time and you will know in advance if you are going to be on time.

What are the other navigation options?

When you tap **Navigate to...**, you can set your destination in many ways, not just by entering the address. The other options are listed below:



Home

Tap this button to navigate to your Home location.

You will probably use this button more than any other.

For information about setting your Home location, see **Change Home location** on page 51.



Favourite

Tap this button to select a Favourite as your destination.

For more information about Favourites, see **Favourites** on page 35.



Recent destination

Tap this button to select your destination from a list of places you have recently used as destinations.



Point of Interest

Tap this button to navigate to a Point of Interest (POI).

For more information about POIs and navigating to a POI, see **Points of Interest** on page 39.



Point on map

Tap this button to select a point on the map as your destination using the map browser.

For more information about the map browser, see **Using the map** on page 33.



Latitude Longitude

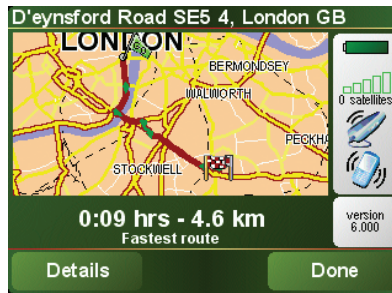
Tap this button to enter a destination with latitude and longitude values.




TomTom Buddy

Tap this button to navigate to the current position of a TomTom Buddy. Don't forget that the Buddy may move before you reach him.

For more information about TomTom Buddies, see **TomTom PLUS** on page 63.




You can then select from the following options:

-
- 


Browse as text

Tap this button for a list of all the turn instructions on the route.

This is particularly useful if you need to explain a route to someone else.
 - 


Browse as images

Tap this button to see each turn in the journey. Tap the right and left arrows to move forwards and backwards through the journey.


Tap the screen to turn off the 3D display and view the map from above.
 - 

Browse map of route

Tap this button to see an overview of the route using the map browser.

For more information about the map browser, see **Using the map** on page 33.
 - 

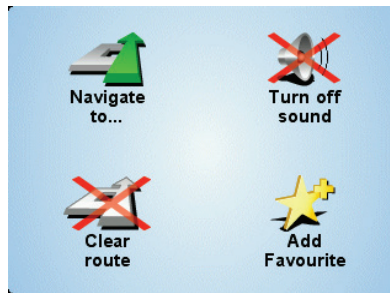
Show route demo

Tap this button to watch a demo of the journey. You can interrupt the demo at any time by tapping the screen.
 - 

Show route summary

Tap this button to open the route summary screen.

You can access these options for the route you last planned by tapping **View route** in the Main Menu.



- **Navigate to...**

Tap this button to select a destination.

- **Turn off sound / Turn on sound**

Tap this button to turn the spoken instructions on or off.

- **Clear route**

Tap this button to delete the route that is currently planned. Your TomTom RIDER will stop giving you directions.

Your position will still be shown in the Driving View. You do not need to clear a route before you plan a new route, or start navigating to a new destination.

- **Add favourite**

Tap this button to add your current location as a favourite. Your TomTom RIDER will use the address of your current location as the name of the favourite. Later, you can go back and change the name of the favourite if you wish.

This button is useful if you see something interesting while you are driving. You can add it as a favourite so that the location is remembered by your TomTom RIDER.

Why can't I open the main menu while I am driving?

- Safety - it would be dangerous to operate your TomTom RIDER with all the available menu buttons while driving.
- Gloves - when you are wearing gloves, the buttons in the normal menu are too small to use easily. The large buttons in the driving menu can be tapped while driving.

How can I cancel the driving menu?

You cannot cancel the driving menu. The menu will disappear after 10 seconds if you do not tap a button.

Chapter 8

Finding alternative routes

Once you have planned a route, you may want to change something about the route, without changing your destination.

Why would I want to change the route?

Maybe for one of these reasons:

- You can see a roadblock or a line of traffic ahead.
- You want to travel via a particular location, to pick someone up, stop for lunch or fill up with petrol.
- You want to avoid a difficult junction or a road you don't like.



Tap **Find alternative...** in the Main Menu to change the route that is currently planned.

Then tap one of the options below.



Tap this button to calculate an alternative to the route already planned.

Your RIDER will look for another route from your current location to your destination.

If you decide you would prefer to use the original route after all, tap **Recalculate original**.

Why would I need to do this?

Apart from the roads near your position and near your destination, the new route will use totally different roads to reach your destination. This is an easy way of calculating a totally different route.



Tap this button if you can see a roadblock or a line of traffic ahead. You then have to choose how much of the route ahead you want to avoid.

Choose from the different options: 100m, 500m, 2000m, 5000m. Your RIDER will recalculate your route avoiding the section of the route for the distance you selected.

Don't forget that once a new route is calculated, you may have to turn off the road you are on very soon.

If the roadblock suddenly clears, tap **Recalculate original** to return to your original route.



Travel via...

Tap this button to change your route so that it passes a particular location.

Perhaps you want to pick someone up on the way, or stop for lunch.

You choose the location you want to pass in the same way as you choose a destination. So you can select from all the same options: for example, **Address, Favourite, Point of Interest** and **Point on map**.

Your RIDER will calculate a new route to your destination that passes the location you chose.

Using this button, you can only travel via one location. If you want to pass more than one, use an Itinerary. For more information, see **Itinerary planning** on page 29.



Recalculate original

Tap this button to return to the original route without any deviations for roadblocks or to travel via particular locations.



Avoid part of route

Tap this button to avoid a part of the route. Use this button if you see that your route includes a road or junction you don't like, or which is well-known for traffic problems.

You then choose the road you want to avoid from a list of the roads on your route.



Minimise traffic delays

Tap this button to recalculate your route so that it avoids traffic problems as much as possible. Your RIDER will check if there are any traffic problems on your route and work out the best route to avoid the problems.

For more information about using TomTom Traffic, see **TomTom Traffic** on page 61.

Creating an Itinerary



Itinerary planning

1. Tap the screen to bring up the Main Menu.
2. Tap **Itinerary planning**.

Note: This button may only be available if all menu options are shown. To show all menu options, tap **Show ALL menu options**.

For more information, see **Hidden buttons and features** on page 49.

The Itinerary planning screen opens. At first, there are no items on the Itinerary.

3. Tap **Add** and select a location.

Tip
You can add items to your Itinerary in any order and organise them into the Itinerary later.

Following an Itinerary

When you use an Itinerary to navigate, the route will be calculated to the first destination on the Itinerary. Your TomTom RIDER calculates the remaining distance and time to the first destination and not for the whole Itinerary.

As soon as you start to use an Itinerary, the route is calculated from your current position. You do not need to set a departure point.

When you have passed a waypoint or reached a destination, it is marked as visited.

Waypoints are shown on the map but your RIDER will not warn you when you are approaching a waypoint, or tell you when you reach the waypoint.

Organising an Itinerary

Tap an item on your Itinerary to open a page of buttons for editing the item. The buttons shown below are available.



Mark as waypoint

You can change a waypoint into a destination using this button.

Remember that destinations are places where you want to stop, and waypoints are places you want to pass.

This button is only shown if the item you tapped is a destination.



Mark as destination

You can change a waypoint into a destination using this button.

Remember that destinations are places where you want to stop, and waypoints are places you want to pass.

This button is only shown if the item you tapped is a waypoint.



Mark 'visited'

Tap this button to miss out part of your Itinerary. Your RIDER will ignore this item and all the items before it in the Itinerary.

It will navigate you to the next item in the Itinerary.

This button is only shown if you are still due to visit this item.



Navigate there

Tap this button to navigate to the cursor position. Your RIDER will calculate the route there.



Find POI nearby

Tap this button to find a POI near the cursor position. For example, if you have found a restaurant to go to, you can search for a parking garage nearby.



Call

Tap this button to call the cursor position. This button is only available if your RIDER has the phone number for the cursor position.

The phone numbers of many POIs are stored in your RIDER. If you entered phone numbers for POIs you have created, you can also call them.

For more information about hands-free calling, see **Hands-free calling** on page 45.



Add as Favourite

Tap this button to create a Favourite at the cursor position.

For more information about Favourites, see **Favourites** on page 35.



Add as POI

Tap this button to create a POI at the cursor position.

For more information about POIs, see **Points of Interest** on page 39.



Travel via...

Tap this button to travel via the cursor position. This button is only available if you are currently navigating to a destination.

Chapter 11

Favourites

What are Favourites?

Favourites are places that you go often. You can create Favourites so that you don't have to enter the address every time you want to navigate there.

They don't have to be places you like, just useful addresses.

How can I create a Favourite?

From the Main Menu, tap **Add Favourite**.

Note: The button **Add Favourite** may not be shown on the first page of the Main Menu. Tap the arrow to open other pages in the Main Menu.

You can then select the location of the Favourite from the list below.

Give your Favourite a name that is easy to remember. Your RIDER will always suggest a name, usually the address of the Favourite. To enter the name, just start typing. You don't have to delete the suggested name.



Home

You can set your Home location as a Favourite.

Does it make sense to do this?

If you want to change your Home location, you can create a Favourite of the Home location before you change it.

Perhaps you want to change your Home location from your actual home address to your office address. You can create a Favourite for your actual home address before you change it.



Favourite

You cannot create a Favourite from another Favourite. This option will always be unavailable in this menu.

To rename a Favourite, tap **Manage Favourites** in the Preferences menu.

For more information, see **Manage Favourites** on page 51.



Address

You can specify an address to be a Favourite. When you enter an address, you can choose from four options. The same options as appear in the **Navigate to...** menu:

- **City centre**
 - **Street and house number**
 - **Postcode** (fully supported only in UK and the Netherlands)
 - **Crossing or intersection**
-



Recent destination

Select a Favourite location from a list of places you have recently used as destinations.



Point of Interest

You can add a Point of Interest (POI) as a Favourite.

Does it make sense to do this?

If you visit a POI you particularly like, for example a restaurant, you can add it as a Favourite.

To add a POI as a Favourite, tap this button, then do the following:

1. Narrow your choice of POIs by selecting the area where the POI is.

You can select one of these options:

- **POI near you** - to search from a list of POIs near your current position.
- **POI in city** - to choose a POI in a particular town or city. You have to specify a town or city.
- **POI near Home** - to search from a list of POIs near your Home location.

If you are currently navigating to a destination, you can also select from a list of POIs which are on your route or near your destination. Choose one of these options:

- **POI along route**
- **POI near destination**

2. Select the category of POI:



Tap the category of POI if it is shown or tap the arrow to choose from the complete list.

Tap **Any POI category** to search for a POI by name.

For more information about POIs, see **Points of Interest** on page 39.



GPS position

Tap this button to add your current position as a Favourite.

For example, if you see stop somewhere you like, while you are there you can tap this button to create the Favourite.



Point on map

Tap this button to create a Favourite using the map browser.

Select the location of the Favourite using the cursor, then tap **Done**.

For more information about the map browser, see **Using the map** on page 33.



Latitude Longitude

Tap this button to create a Favourite by entering latitude and longitude values.



TomTom Buddy

Tap this button to make a Favourite of the current position of a TomTom Buddy.

For more information about TomTom Buddies, see **TomTom PLUS** on page 63.

How can I use a Favourite?

You will normally use a Favourite as a way of navigating to a place without having to enter the address. To navigate to a Favourite, do the following:

1. Tap the screen to bring up the Main Menu.
2. Tap **Navigate to...**
3. Tap **Favourite**.
4. Select a Favourite from the list.

Your RIDER calculates the route for you.

5. When the route is calculated, tap **Done**.

Your RIDER will immediately start guiding you to your destination with spoken instructions and visual instructions on the screen.

How many Favourites can I create?

You can create up to 48 Favourites. If you want to add more than 48, we suggest that you make some POI categories and add some of your Favourites as POIs.

For more information about POIs, see **Points of Interest** on page 39.

How can I delete a Favourite?

1. Tap the screen to bring up the Main Menu.
2. Tap **Change preferences** to open the Preferences menu.
3. Tap **Manage Favourites**.

Tip: Tap the arrow to move to the next page buttons.

4. Tap the Favourite you want to delete.
5. Tap **Delete**.

How can I change the name of a Favourite?

1. Tap the screen to bring up the Main Menu.
2. Tap **Change preferences** to open the Preferences menu.

3. Tap **Manage Favourites**.

Tip: Tap the arrow to move to the next page buttons.

4. Tap the Favourite you want to rename.

5. Tap **Rename**.

3. Tap **Point of Interest**.
4. Tap **POI in city**.
5. Narrow your choice of POIs by selecting the area where the POI is.



You can select one of these options:

- **POI near you** - to search from a list of POIs near your current position.
- **POI in city** - to choose a POI in a particular town or city. You have to specify a town or city.
- **POI near Home** - to search from a list of POIs near your Home location.

If you are currently navigating to a destination, you can also select from a list of POIs which are on your route or near your destination. Choose one of these options:

- **POI along route**
- **POI near destination**

6. Type the name of the town where you want to go. Select the town when it is shown in the list.
7. Tap **Parking garage**.
8. Select the category of POI:



Tap **Any POI category** to search for a POI by name.

Tap the category of POI if it is shown.

Tap the arrow to choose from the complete list of categories. Select the category from the list or start to type the name of the category and select it when it is shown in the list.

9. Select a parking garage. The distance listed next to each POI is the distance from the city centre.

10. From the list of POIs shown, select the POI you want to navigate to. The table below explains the distances listed next to each POI.

POI near you	Distance from your current location
POI in city	Distance from the city centre
POI near Home	Distance from your Home location
POI along route	Distance from your current location
POI near destination	Distance from your destination

If you know the name of the POI, tap **Find** and type the name. Select it from the list when it is shown.

Once you have selected a POI, the route to the POI is calculated by your TomTom RIDER.

The route to the POI is then calculated by your TomTom GO.

Managing POIs



Manage POIs

Tap **Manage POIs** from the Preferences menu.

Note: The **Manage POIs** button is only available when all menu buttons are shown. To show all menu buttons, tap **Show ALL menu options** in the Preferences menu.

You can, for example, do the following:

- Create your own POI categories and add POIs to them.
- Set warnings when you get close to POIs.

Why would I want to create my own POIs?

A POI acts like a shortcut - once you have saved a location as a POI you never have to type the address of that POI again. But when you create a POI you can save more than just the location.

- Phone number - when you create a POI, you can save a phone number with it.
- Categories - when you create a POI you have to put it in a category.

For example, you could create a category of POIs called 'Favourite restaurants'. With each POI, save their phone number so that you can call them from your RIDER to reserve a table.

How can I create my own POIs?

1. Tap the screen to bring up the Main Menu.
2. Tap **Change preferences**.
3. Tap **Manage POIs**.
4. Before you can add a POI, you have to create at least one POI category. Every POI is assigned to a POI category. You can only add POIs to POI categories you have created yourself.



Add POI category

Tap **Add POI category**.

5. Enter a name for your POI category, for example, 'Friends' or 'Favourite restaurants'. Then select a marker for your POI category.

6. Tap **Add POI**.



Add POI

7. Select the POI category you want to add the POI to.

8. Select the location of your POI from the list below.



Home

You can set your Home location as a POI.

Does it make sense to do this?

If you want to change your Home location, you can create a POI of the Home location before you change it.



Favourite

You can create a POI from a Favourite.

Does it make sense to do this?

You can only create a limited number of Favourites. If you want to create more Favourites you have to delete some Favourites first. Before you delete a Favourite, make it into a POI so that you don't lose the address.



Address

You can specify an address to be a POI. When you enter an address, you can choose from four options. The same options as appear in the **Navigate to...** menu:

- **City centre**
- **Street and house number**
- **Postcode** (fully supported only in UK and the Netherlands)
- **Crossing or intersection**



Recent destination

Select a POI location from a list of places you have recently used as destinations.



Point of Interest

You can add a Point of Interest (POI) as a POI. For example, if you are creating a category of POIs for your favourite restaurants, use this option instead of entering the addresses of the restaurants.



GPS position

Tap this button to add your current position as a POI.

For example, if you stop somewhere you like, while you are there you can tap this button to create the POI.



Point on map

Tap this button to create a POI using the map browser.

Select the location of the POI using the cursor, then tap **Done**.

For more information about the map browser, see **Using the map** on page 33.



Latitude
Longitude

Tap this button to create a POI by entering latitude and longitude values.



TomTom
Buddy

Tap this button to make a POI of the current position of a TomTom Buddy.

For more information about TomTom Buddies, see **TomTom PLUS** on page 63.

How can I set warnings for POIs?

1. Tap the screen to bring up the main menu.
2. Tap **Change preferences**.
3. Tap **Manage POIs**.

Note: The **Manage POIs** button is only available when all menu buttons are shown. To show all menu buttons, tap **Show ALL menu options** in the Preferences menu.



Warn when
near POI

4. Tap **Warn when near POI**.
5. Select the category of POI you want to be warned about.

Select the category from the list or start to type the name of the category and select it when it is shown in the list.

6. Set how close the POI should be when you receive a warning.

Warn when closer than: 3:11pm

70 yards

1	2	3	4	5
6	7	8	9	0
←	Cancel	Done		

7. Choose the warning sound for the category of POI you selected.

Chapter 13

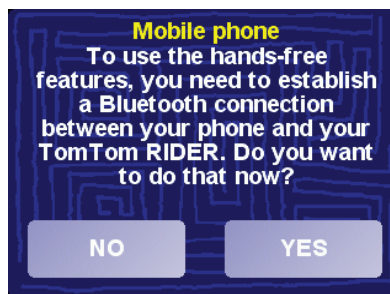
Hands-free calling

Note: not all phones are supported or compatible with all features. For more information, visit www.tomtom.com/phones

Connecting to your phone

First you must establish a connection between your mobile phone and your TomTom RIDER. You only have to do this once. Your TomTom RIDER remembers your phone.

Tap **Mobile phone** in the **Main Menu**, then follow the instructions on the screen.



Setting up TomTom PLUS

After you have established a connection with your phone, you can set up a wireless data connection for TomTom PLUS services.

For information about TomTom PLUS, see **TomTom PLUS** on page 63.

Tips

- Make sure that you switch on Bluetooth on your phone.
- Make sure that your phone is set to 'discoverable' or 'visible to all'.
- You may have to enter the password '0000' on your phone in order to connect to your TomTom RIDER.
- Make your TomTom RIDER a trusted device on your phone. Otherwise you have to enter '0000' every time.

See your phone's user guide for information about Bluetooth settings.

Your phonebook

You can copy your phonebook from your mobile phone to your TomTom RIDER so that you can make calls with just a few taps on the screen.

This is the safest way to make hands-free calls.

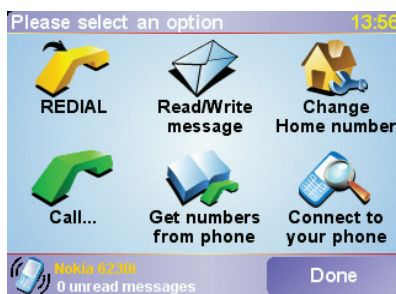
Note: You can copy your phonebook to your TomTom RIDER at any time. From the Mobile phone menu, tap **Get numbers from phone**.

Not all phones can transfer their phonebook to your RIDER. For more information, visit www.tomtom.com/phones

Making a call

Once you have established a connection with your phone, you can start making calls.

1. Tap **Mobile phone** in the Main Menu.
2. Tap **Call**.



Note: Make sure that your phone is currently selected. The current phone is shown at the bottom of the screen.

3. Tap **Number** to enter a number to call.
4. Do one of the following:



- Tap **Home** to call your Home location. If you have not entered a number for your Home location this button is unavailable. To enter a number, tap **Change Home number** in the **Phone preferences** menu.
- Tap **Number** to enter a number to call.
- Tap **Point of Interest** to choose a Point of Interest (POI) to call. If your RIDER knows the phone number of a POI, this is shown next to the POI:



- Tap **Phonebook entry** to select a contact from your phonebook.

Note: If you have not copied your phonebook to your TomTom RIDER, the button **Phonebook entry** is unavailable.

- Tap **Recently dialed** to select from a list of people or numbers you have called recently using your RIDER.
- Tap **Recent caller** to select from a list of people or numbers who called you recently. Only calls you have received on your RIDER are saved in this list.

For information about POIs, see **Points of Interest** on page 39.

Receiving a call

If someone calls you while you are driving, accept or reject the call by tapping the screen.

Auto-answer

You can tell your TomTom RIDER to answer every call automatically after a certain time. Tap **Phone preferences** in the mobile phone menu, then tap **Auto-answer preferences**.

Select when your TomTom RIDER will automatically answer your calls.

Sharing your TomTom RIDER

You can establish connections with up to 5 mobile phones. To add more phones, do the following

1. Tap **Mobile phone** in the Main Menu.
2. Tap **Connect to your phone**.
3. Tap **Find other phone...** and follow the instructions on the screen.

To switch between phones, tap **Connect to your phone** and then select your phone from the list.

Chapter 14

Preferences

You can change many things about the way your TomTom RIDER looks and behaves. Tap **Change preferences** in the Main Menu.

Hidden buttons and features

When you first start using your TomTom RIDER, not all the buttons will be shown in the menu.

Many buttons and some more advanced features are hidden because you will not need these features very often.



Show ALL menu options

To see all of the buttons and features, tap this button in the Preferences menu.



Show fewer menu options

After you have finished, we recommend that you hide the advanced buttons and features again by tapping this button. For everyday use, you won't need all the buttons and features.

Use night colours / Use day colours



Use Night colours

Tap this button to reduce the brightness the of the screen and use darker colours on the map.

When should I use this?

When it's dark outside, it's easier to see the screen of your RIDER if it isn't so bright.



Use day colours

To change back to a brighter screen and brighter colours on the map, tap the button **Use day colours**.

Turn off 3D display / Turn on 3D display



Turn off 3D display

Tap this button to view the map from above while you are navigating.

When you turn the 3D display off, you can choose whether the map should show your direction of travel at the top, or keep north at the top. If you choose to keep north at the top, the map will not move as your direction of travel changes.



Turn on 3D display

To switch back to seeing the map from your perspective as you drive, tap **Turn on 3D display**.

When should I use this?

In some situations, it is easier to see the map from above. Perhaps if the roads are very complicated or if you are walking and using your RIDER to navigate.

Turn off map display

When you turn off the map display, instead of seeing your position on a map in the Driving View, you will only see information about the next instruction.



When you tap this button, you have to specify when the map should be turned off. These are the options:

- **Always** - you will only see information about the next instruction and arrows. The map will never be shown.
- **Above a certain speed** - you set the speed at which the map is switched off. When you are driving fast, the map can be distracting.
- **Never** - the map is never switched off.

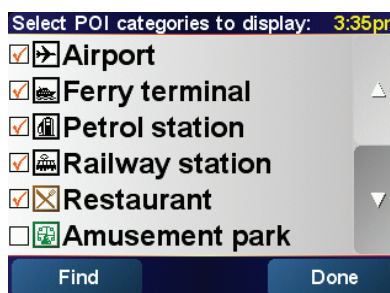
Enable/disable POIs



Enable/disable POIs

Tap this button to set which categories of Points of Interest (POIs) should be shown on the map.

Select the POIs that you want to see on the map from the list:



When you select a POI, it will be shown on the map by the symbol you can see next to each category in the list above.

To find a category of POI quickly, tap **Find**, then start to type the name of the POI category. As soon as the category is shown in the list, you can select it.

For more information about POIs, see **Points of Interest** on page 39.

Turn off sound / Turn on sound



Turn off sound

Tap this button to turn the spoken instructions off. The button changes to **Turn on sound**. If you turn the sound off, warnings for upcoming POIs are also turned off.

Can I still use my RIDER to make hands-free calls when the sound is turned off?

Turning the sound off does not affect hands-free calling. You will still be able to hear the caller.

Tip

To change the volume, tap **Volume preferences** in the Preferences menu. For more information, see **Volume preferences** on page 51.

To change the volume quickly while you are driving, tap the bottom left-hand section of the Driving View and move the slider.

To change the voice, tap **Change voice** in the Preferences menu. For more information, see **Sound** on page 47.

Volume preferences



Volume preferences

Tap this button to change the volume of the spoken instructions.

Manage Favourites



Manage Favourites

Tap this button to rename or delete Favourites.

To find a Favourite quickly, tap Find, then start to type the name of the Favourite. As soon as the Favourite is shown in the list, you can select it.

For more information about Favourites, see **Favourites** on page 35.

Change Home location



Change Home location

Tap this button to set or change your Home location.

Do I have to have my actual home as the Home location?

Your Home location can be a place you go often, for example, your office. It doesn't have to be your actual home.

Why should I set a Home location?

Once you have set your Home location, you can navigate there quickly whenever you need to get there. In the **Navigate to...** menu, just tap **Home**.

Change voice



Change voice

Tap this button to change the voice which gives you instructions.

Change language



Change language

Tap this button to change the language used for all the buttons and messages you see on your RIDER.

You can choose from a wide range of languages. When you change the language, you are also given the opportunity to change the voice.

Warn when near POI



Warn when near POI

Tap this button to be alerted when you are near a Point of Interest (POI).

For example, your RIDER can tell you when there is a petrol station nearby.

To find out about POIs and about setting warnings for POIs, see **Points of Interest** on page 39.

Set clock



Set clock

Tap this button to set the time and to change the way the time is displayed.

The easiest way to set the time is by tapping the **Sync** button. Your RIDER will then take the time from the GPS information it receives.

For more information about GPS, see **How does navigation work?** on page 67.

Note: After using **Sync** to set the time, you may have to adjust the hours depending on your time zone. Your RIDER works out your time zone and always keeps the time correct using the GPS information.

You can only use **Sync** if you have GPS reception, so you cannot set the clock in this way when you are indoors.

Switch map



Switch map

Tap this button to change the map you are using.

When do I need to switch map?

You have to tell your RIDER which map you want to use. If there is more than one map on the hard disk or memory card in your RIDER, you can switch to another map.

Note: When you switch to another map, you may need to activate that map. For more information about activating maps, see **Using the map** on page 33.

Keyboard preferences



Keyboard preferences

Tap this button to select the size of the keys on the keyboard and the keyboard layout. You can select from two sizes:

- **Large keyboard**
- **Small keyboard**

Three keyboard layouts are available:

- **ABCD keyboard**
- **QWERTY keyboard**

Status bar preferences

This button may only be available if all menu options are shown. To show all menu options, tap **Show ALL menu options**.

For more information, see **Hidden buttons and features** on page 49.



Status bar preferences

Tap this button to select the information shown on the status bar:

- Remaining time - the estimated time left until you reach your destination.
- Remaining distance - the distance left until you reach your destination.
- Arrival time - your estimated arrival time.
- Current time

Note: If you enter an arrival time when you plan your journey, the current time is not shown. For more information, see **Arrival times** on page 19.

- Street name - the name of the next street to turn on to.
- Speed - your speed.

If the speed limit for road you are on is available, it is shown next to your speed. If you drive faster than the speed limit, your speed is shown in red.

Note: The speed limit information is included with the map and is not available for all roads.

When you first start your TomTom RIDER, the remaining time, remaining distance, arrival time and the street name are shown.

Change map colours

This button may only be available if all menu options are shown. To show all menu options, tap **Show ALL menu options**.

For more information, see **Hidden buttons and features** on page 49.



Change map colours

Tap this button to select the colour schemes used for day and night map colours.

You can also download more colour schemes from TomTom PLUS. For more information, see the TomTom PLUS leaflet included with your product.

Brightness preferences

This button may only be available if all menu options are shown. To show all menu options, tap **Show ALL menu options**.

For more information, see **Hidden buttons and features** on page 49.



Brightness preferences

Tap this button to set the brightness of the screen. You can also set these options:

- **Turn brightness down when dark** - your RIDER uses a light sensor to detect the background light level. If this option is selected, as it gets darker, your RIDER reduces the brightness of the screen so that it is not distracting.

If you select one of these options, you then choose what is shown in the middle of the arrow:

- **Direction** - the direction in which you are driving is shown in the centre of the compass, as a compass direction.
- **Degrees** - the direction in which you are driving is shown in the centre of the compass, in degrees.
- **Nothing**
- **One with arrow pointing to your destination** - the arrow always points to your destination relative to the direction you are travelling. The distance to your destination is shown in the middle of the arrow.
- **None** - no compass will be shown.

Set units

This button may only be available if all menu options are shown. To show all menu options, tap **Show ALL menu options**.

For more information, see **Hidden buttons and features** on page 49.



Set units

Tap this button to set the units used for the following:

- Distances
- Time
- Latitudes and longitudes
- Temperature
- Air pressure

Operate left-handed / Operate right handed

This button may only be available if all menu options are shown. To show all menu options, tap **Show ALL menu options**.

For more information, see **Hidden buttons and features** on page 49.



Operate left-handed

Tap this button to move important buttons, for example, the **Done** and **Cancel** buttons as well as the zoom bar, to the left hand side of the screen. This makes it easier to tap the buttons with your left hand without blocking the screen.

To move the buttons back to the right hand side of the screen, tap **Operate right-handed**.

Name preferences

This button may only be available if all menu options are shown. To show all menu options, tap **Show ALL menu options**.

For more information, see **Hidden buttons and features** on page 49.



Name preferences

Tap this button to set what is shown on the map in the Driving View. The following options are available:

- **Show house numbers before street names**
- **Show street names**

- **Show next motorway** - when this option is selected, the next major road on your route is shown at the top of the screen in the Driving View.

Hide tips / Show tips

This button may only be available if all menu options are shown. To show all menu options, tap **Show ALL menu options**.

For more information, see **Hidden buttons and features** on page 49.



Hide tips

Tap this button to stop your RIDER from giving you tips from time to time.

After you hide the tips, the button changes to **Show tips**. Tap this button to turn tips on again.

Set owner

This button may only be available if all menu options are shown. To show all menu options, tap **Show ALL menu options**.

For more information, see **Hidden buttons and features** on page 49.



Set owner

Tap this button to enter your name and address as the owner of your RIDER and to change or delete a 4-digit password for your RIDER.

You can create a 4-digit password for your RIDER using TomTom HOME:

1. Connect your RIDER to your computer and switch it on.

TomTom HOME starts automatically. For information about installing TomTom HOME on your computer, see **Installing TomTom HOME** on page 65.

2. From the Options menu in TomTom HOME, click My RIDER 910/710/510.
3. Click the ON/OFF button on the picture of your RIDER to start the application on your computer.
4. From the Main Menu, click **Change preferences**.
5. Click **Set Owner**. You can now set a 4-digit password for your RIDER so that only you can use it.

You can only create a 4-digit password using TomTom HOME.

You can only change or delete a 4-digit password on your TomTom RIDER.

Edit TomTom PLUS account

This button may only be available if all menu options are shown. To show all menu options, tap **Show ALL menu options**.

For more information, see **Hidden buttons and features** on page 49.



Edit TomTom PLUS account

Tap this button to log in to your TomTom PLUS account.

If you have more than one TomTom PLUS account or if several people are sharing the same RIDER, you can log in to another TomTom PLUS account.

Start-up preferences

This button may only be available if all menu options are shown. To show all menu options, tap **Show ALL menu options**.

For more information, see **Hidden buttons and features** on page 49.



Start-up preferences

Tap this button to set what your RIDER should do when you first switch it on. The following options are available:

- **Continue where I left off** - your RIDER starts as it was when you switched it off.
- **Ask for a destination** - your RIDER starts with **Navigate to...** menu. You can enter a destination immediately.
- **Show the Main Menu** - your RIDER starts with the Main Menu.

Disable Bluetooth / Enable Bluetooth

This button may only be available if all menu options are shown. To show all menu options, tap **Show ALL menu options**.

For more information, see **Hidden buttons and features** on page 49.



Disable Bluetooth

Tap this button to disable all Bluetooth functionality on your RIDER. In some places, such as hospitals and aeroplanes, you are required to turn Bluetooth off on all electronic devices.

To turn Bluetooth on again, tap **Enable Bluetooth**.

Disable wireless data / Enable wireless data

This button may only be available if all menu options are shown. To show all menu options, tap **Show ALL menu options**.

For more information, see **Hidden buttons and features** on page 49.



Disable wireless data

Tap this button to turn off the possibility of receiving wireless data. You will still be connected to your mobile phone via Bluetooth and will still be able to receive and make hands-free calls. You will not be able to receive any data that uses a wireless data connection, such as TomTom Traffic.

To turn wireless data on again, tap **Enable wireless data**.

Do not ask arrival time / Ask arrival time

This button may only be available if all menu options are shown. To show all menu options, tap **Show ALL menu options**.

For more information, see **Hidden buttons and features** on page 49.



Do not ask arrival time

Tap this button to stop your RIDER from asking you if you want to arrive by a particular time whenever you plan a route.

To turn this option on again, tap **Ask arrival time**.

For more information, see **Arrival times** on page 19.

Reset factory settings

This button may only be available if all menu options are shown. To show all menu options, tap **Show ALL menu options**.

For more information, see **Hidden buttons and features** on page 49.



Reset factory settings

Tap this button to restore the factory settings to your TomTom RIDER. All your settings, including Favourites, your Home location, warnings for POIs and any Itineraries you have created, as well as recent destinations and recent calls and callers, will be deleted.

Chapter 15

TomTom Traffic

TomTom Traffic



TomTom Traffic is a TomTom PLUS service that sends up-to-date traffic information to your RIDER. To use TomTom Traffic you must have a mobile phone with Bluetooth and a wireless data connection, for example, GPRS, EDGE, UMTS, CDMA.

TomTom Traffic takes the most up-to-date information from the best local sources. Use the free trial to try TomTom Traffic. For more information, see the TomTom PLUS leaflet.

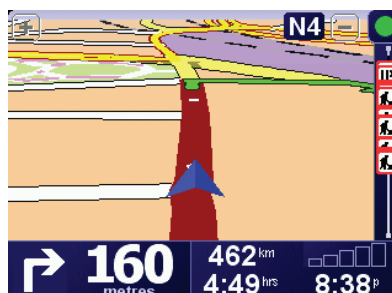
Note: TomTom Traffic is not available in all countries or areas. Visit www.tomtom.com/plus to check availability in your country.

Setting up TomTom Traffic

To receive TomTom Traffic, first establish a connection between your mobile phone and your TomTom RIDER. See **Connecting to your phone** on page 45. Then do the following:

1. Tap **TomTom Traffic** in the Main Menu.
2. Tap **Enable Traffic**.

Using Traffic



TomTom Traffic will immediately try to retrieve the latest traffic information.

Note: TomTom Traffic retrieves traffic information from TomTom using a wireless data connection on your mobile phone. You must be connected to your phone and you must have a wireless data subscription with your mobile network operator.

For information about connecting to your phone, see **Hands-free calling** on page 45.

Updating traffic information

If you are using TomTom Traffic, there are two ways to update the traffic information:

- Tap **Update traffic info** in the Traffic menu.
- Set Traffic to be updated automatically at regular intervals.

To do this, tap **Change Traffic preferences** in the Traffic menu. Select **Automatically update traffic info while on route**, then tap **Done**.

You are then asked if you want to limit how often Traffic is updated.

If you choose not to limit how often Traffic is updated, then TomTom will send updated traffic information to your RIDER as soon as it is available.

If you choose to limit how often Traffic is updated, you are asked to set a time.

TomTom saves this time limit and sends new traffic information at the interval you set. If there is no new traffic information, then TomTom will not send any information to your RIDER. This saves you money by not using your wireless data connection when there is no new information.

Using traffic information

Having up-to-date traffic information can help you to reduce your journey time.

Whenever you plan a route, the latest traffic updated you received from TomTom is taken into account by your RIDER when it plans the route.

Your RIDER can also recalculate your route if the traffic situation changes after you start a journey:

1. Tap **Change Traffic preferences** in the Traffic menu.
2. Select **Automatically optimise route after every update**.

After your RIDER gets new traffic information, it will automatically optimise your route.

Note: The best route may be the same as the route originally planned.

Chapter 16

TomTom PLUS

TomTom PLUS is a collection of services that keep you informed and entertained while you're on the road.

You can subscribe to a range of extras and download them either directly to your RIDER, or to your computer from where you can transfer them to your RIDER.

Tips

- New services are being added regularly. Use TomTom HOME or visit www.tomtom.com/plus to find out what's available.
- To download TomTom PLUS services to your RIDER, you need a mobile phone with Bluetooth and a wireless data connection (GPRS, EDGE, UMTS or CDMA). Your mobile operator may charge you for using a wireless data connection.

Don't forget that you can download many TomTom PLUS services to your computer without needing to set up a wireless data connection.

- Not all services are available in all countries. For more information, visit www.tomtom.com/plus



Traffic

Get the fastest and most reliable updates from local sources.



Safety cameras

Be smart and stick to the speed limit.



Maps

Download detailed maps of many cities throughout the world or even whole countries.



Voices

Get instructions from John Cleese and many other funny voices.



Buddies

Instant messaging and navigation meet on your RIDER.



Audiobooks

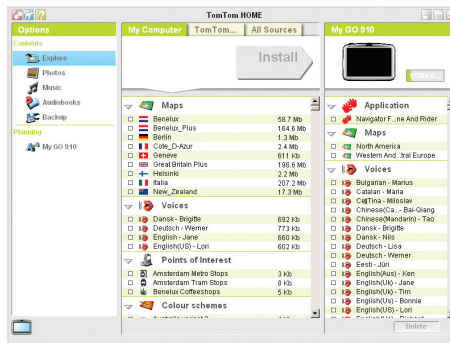
Let famous narrators read you the latest best sellers.

Chapter 17

Using TomTom HOME

Using TomTom HOME, you can, for example, do the following:

- Make and restore backups of your TomTom RIDER.
- Manage the maps, voices, POIs and other extras on your RIDER.
- Read the full version of the user manual, available in 21 languages.
- Plan journeys in advance.
- Buy TomTom PLUS services and manage your subscriptions.



Installing TomTom HOME

To install TomTom HOME, put the CD which came with your RIDER into your computer.

If the installation does not start, browse to the CD on your computer and double-click the file **Install TomTom HOME**.

Connect your RIDER to your computer and switch it on.

Making a backup

One of the most important things you can do with TomTom HOME is make a backup of your TomTom RIDER.

1. Connect your RIDER to your computer and switch it on.

TomTom HOME starts.

2. Click **Backup** under **Contents**.

3. Click **Backup**.

TomTom HOME makes a backup of your RIDER on your computer.



Restoring a backup

If you ever have a problem with your RIDER, you can restore the backup.

Follow steps 1 and 2 above, then select the latest backup and click **Restore**.

The latest backup will be restored to your RIDER.

For more information, see the Help included with TomTom HOME.

Chapter 18

How does navigation work?

Global Positioning System (GPS)

In order to navigate you to your destination, your TomTom RIDER must know where you are now. To find your current position, your TomTom RIDER uses the Global Positioning System (GPS). GPS is available for free and without subscription.

The GPS uses satellites to transmit signals to GPS receivers. Your TomTom RIDER has a built-in GPS receiver. Using the GPS signal, your TomTom RIDER can work out where you are and how fast you are going. GPS signals work in all weather, anywhere in the world.

Note: Your TomTom RIDER does not transmit your position, so others cannot use it to track you while you are driving. You can however send your position to TomTom Buddies. For more information, visit www.tomtom.com/plus

Maps

Once your RIDER knows where you are and you have told it where you want to go, it uses the digital map on the memory card or hard disk to work out the best route to your destination.



Chapter 19

TomTom limited warranty

WARRANTOR

Non-U.S. and non-Canadian purchases: If you have made your purchase outside the United States and Canada, this Limited Warranty is granted by and this Limitation of Liability is stipulated for the benefit of TomTom International B.V., Rembrandtplein 35, 1017 CT Amsterdam (The Netherlands).

WHAT THIS WARRANTY COVERS

1) TomTom International B.V. ("TomTom") warrants to you that the Hardware will be free from defects in workmanship and materials under normal use ("Defects") for a period of two (2) years from the date that the Hardware was first purchased by you ("Warranty Period"). During the Warranty Period the Hardware will be repaired or replaced at TomTom's choice ("Limited Warranty") without charge to you for either parts or labour. This Limited Warranty covers the replacement of the Hardware only. If the Hardware is repaired after the Warranty Period has expired, the Warranty Period for the repair will expire six (6) months after the date of repair.

WHAT THIS WARRANTY DOES NOT COVER

2) The Limited Warranty does not apply to normal wear and tear, does not apply when the Hardware is opened or repaired by someone not authorized by TomTom and does not cover repair or replacement of any Hardware or part thereof damaged by: misuse, moisture, liquids, proximity or exposure to heat and accident, abuse, non-compliance with the instructions supplied with the Hardware, neglect or misapplication. The Limited Warranty does not cover physical damage to the surface of the Hardware. This Limited Warranty does not cover any software that may accompany or be installed on the Hardware.

HOW TO MAKE A WARRANTY CLAIM

3) In order to make a claim of a Defect, you must contact TomTom by email during the Warranty Period via www.tomtom.com to explain the Defect and to obtain an RMA number (Return Materials Authorization) if necessary. You must return the Hardware during the Warranty Period, along with an explanation of the Defect, to the address provided to you by TomTom. If a defect arises and a valid claim under this Limited Warranty is received by TomTom after the first one hundred and eighty (180) days of the Warranty Period, TomTom is entitled to charge you for any reasonable shipping and handling costs made in connection with the repair or replacement of the Hardware. You must comply with any other return procedures stipulated by TomTom, if any.

YOUR LEGAL RIGHTS

4) Some countries may not allow the exclusion or limitation of damages. If any part of this Limited Warranty is held to be invalid or unenforceable, the

remainder of the Limited Warranty shall nonetheless remain in full force and effect.

5) This Limited Warranty is the only express warranty made to you and is provided in lieu of any other express warranties or similar obligations (if any) created by any advertising, documentation, packaging, or other communications.

6) Except for the Limited Warranty and to the maximum extent permitted by applicable law, TomTom and its suppliers provide the Hardware "AS IS AND WITH ALL FAULTS", and hereby disclaim all other warranties and conditions, whether express, implied or statutory, including, but not limited to, any (if any) implied warranties, duties or conditions of satisfactory quality, of fitness for a particular purpose, of reliability or availability, of accuracy or completeness of responses, of results, of workmanlike effort, of lack of viruses, and of reasonable care and skill, all with regard to the Hardware, and the provision of or failure to provide support or other services, information, software, and related content through the Hardware or otherwise arising out of the use of the Hardware. Also, there is no warranty or condition of quiet enjoyment, quiet possession, or non-infringement with regard to the Hardware. This exclusion does not apply to (i) any implied condition as to title and (ii) any implied warranty as to conformity with description.

7) This Limited Warranty does not affect any legal rights under applicable national legislation governing the sale of consumer goods.

8) This Limited Warranty cannot be transferred to any other person.

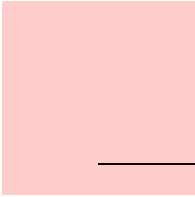
LIMITATION OF LIABILITY

9) Neither TomTom nor its suppliers shall be liable to you or to any third party for any damages either direct, indirect, incidental, consequential or otherwise (including in each case, but not limited to, damages for the inability to use the equipment or access data, loss of data, loss of business, loss of profits, business interruption or the like) arising out of the use of or inability to use the Hardware even if TomTom has been advised of the possibility of such damages.

10) Notwithstanding any damages that you might incur for any reason whatsoever (including, without limitation, all damages referenced herein and all direct or general damages in contract or anything else), the entire liability of TomTom and any of its suppliers shall be limited to the amount actually paid by you for the Hardware.

11) TomTom shall not be liable for (i) any fraud on the part of its employees and/or agents; or (ii) any fraudulent misrepresentation on the part of its employees and/or agents.

12) Notwithstanding the above, neither party's liability for death or personal injury resulting from its own negligence shall be limited.



Chapter 20

Battery notes

It takes about 2 hours to charge the battery completely.

Note: *Your TomTom RIDER uses a small amount of battery power to maintain its state when you switch it off. If you do not charge it for a prolonged period of time then you will lose this state and your TomTom RIDER will re-start. Your settings will however, be maintained.*

Chapter 21

Addendum

Important Safety Notices and Warnings

Global Positioning System

The Global Positioning System (GPS) is a satellite-based system that provides location and timing information around the globe. GPS is operated and controlled under the sole responsibility of the Government of the United States of America which is responsible for its availability and accuracy. Any changes in GPS availability and accuracy, or in environmental conditions, may impact the operation of your TomTom RIDER. TomTom International B.V. and TomTom, Inc. cannot accept any liability for the availability and accuracy of GPS.

Use with Care

Use of TomTom RIDER for navigation still means that you need to drive with due care and attention.

Aircraft and Hospitals

Use of devices with an antenna is prohibited on most aircraft, in many hospitals and in many other locations. TomTom RIDER must not be used in these environments.

Battery

This product uses a Lithium-Ion battery. Do not use it in a humid, wet and/or corrosive environment. Do not put, store or leave your product in or near a heat source, in a high temperature location, in strong direct sunlight, in a microwave oven or in a pressurized container, and do not expose it to temperatures over 60 C (140 F). Failure to follow these guidelines may cause the Lithium-Ion battery to leak acid, become hot, explode or ignite and cause injury and/or damage. Do not pierce, open or disassemble the battery. If the battery leaks and you come into contact with the leaked fluids, rinse thoroughly with water and seek medical attention immediately. For safety reasons, and to prolong the lifetime of the battery, charging will not occur at low (below 0 C/32 F) or high (over 45 C/113 F) temperatures.

Temperatures: Standard operation: -10 C (14 F) to +55 C (131 F); short period storage: -20 C (-4 F) to +60 C (140 F); long period storage: -20 C (-4 F) to +25 C (77 F).



THE LITHIUM-ION BATTERY CONTAINED IN THE PRODUCT MUST BE RECYCLED OR DISPOSED OF PROPERLY. USE TOMTOM RIDER ONLY WITH THE SUPPLIED DC POWER LEAD (CAR CHARGER/BATTERY CABLE) AND AC ADAPTER (HOME CHARGER) FOR BATTERY CHARGING.

Mounting TomTom RIDER

Extreme care must be taken when mounting TomTom RIDER on a motorcycle. Read the description in the Quick Start Guide carefully before mounting TomTom RIDER on your motorcycle. TomTom RIDER shall be mounted in compliance with the relevant legislation and the vehicle manufacturer's rules. Failure to mount

TomTom RIDER correctly could result in damage to your vehicle and serious injury to the vehicle rider and other road users. TomTom RIDER is mounted on your motorcycle at your own risk.

Battery cable

The power cable shall be routed to avoid sharp bends, abrasion, overheating, exhaust gases and battery acids and other potential hazards. It must not be strained nor distorted by e.g. excessive tightening of cable ties. Ensure that all connections are mechanically and electrically safe and secure. Keep away from heat sources and vehicle controls. It must not hinder the operation of safety equipment nor interfere with the driver's ability to control the vehicle.

To recycle your TomTom RIDER unit please see your local approved TomTom service center.

SPECIAL NOTE REGARDING DRIVING IN CALIFORNIA

California Vehicle Code Section 26708 (a) (1) provides that "No persons shall drive any motor vehicle with an object or material placed, displayed, installed, affixed, or applied upon the windshield or side or rear windows." Drivers in California should not use a suction mount on their windshield, side or rear windows. TomTom Inc. bears no responsibility for any fines, penalties or damage that may be incurred by disregarding this notice. While driving in California, TomTom recommends the use of its Alternative Mounting Kit, which includes options for mounting TomTom devices on the dashboard and using the air vents. See www.tomtom.com for more information about this mounting option.

Note: this section of the California Vehicle Code applies to anyone driving in California, not just California residents.

FCC Information for the User

The device used for this transmitter must not be co-located simultaneously operating in conjunction with any other transmitter.

Exposure to Radio Frequency Radiation

To comply with RF exposure requirements please maintain a separation distance of at least 20 cm / 7 inches from any part of the product.

Radio and Television Interference

This equipment radiates radio frequency energy and if not used properly - that is, in strict accordance with the instructions in this manual - may cause interference to radio communications and television reception.

It has been tested and found to comply with the limits for a Class B digital device pursuant to part 15 of the FCC Rules. These are designed to provide reasonable protection against harmful interference in a residential installation. However, there is no guarantee that interference will not occur in a particular installation. If this equipment does cause harmful interference to radio or television reception, which can be determined by turning the equipment off and on, the user is encouraged to try to correct the interference by one or more of the following measures:

- Reorient or relocate the receiving antenna.
- Increase the separation distance between the equipment and the receiver.
- If you are using the equipment with a mains adapter, plug it into an outlet which is on a different circuit from that to which the receiver is connected.
- Consult an experienced radio/TV technician for help.

Important

This equipment was tested for FCC compliance under conditions that included the use of shielded cables and connectors between it and the peripherals. It is

important that you use shielded cable and connectors to reduce the possibility of causing radio and television interference. Shielded cables, suitable for the product range, can be obtained from an authorised dealer. If the user modifies the equipment or its peripherals in any way, and these modifications are not approved by TomTom, the FCC may withdraw the user's right to operate the equipment. For customers in the USA, the following booklet prepared by the Federal Communications Commission may be of help: "How to Identify and Resolve Radio-TV Interference Problems". This booklet is available from the US Government Printing Office, Washington, DC 20402. Stock No 004-000-00345-4.

FCC Declaration of Conformity

Tested to Comply with FCC Standards for Home or Office Use

TomTom RIDER has been tested to – and complies with – part 15 of the FCC rules. Operation is subject to the following two conditions:

1. This device may not cause harmful interference.
2. This device must accept any interference received, including interference that may cause undesired operation.

Responsible party in North America

TomTom, Inc., 150 Baker Avenue, Concord, MA 01742

Tel: 866 48-6866 option 1 (1-866-4-TOMTOM)

Emissions information for Canada

This Class B digital apparatus complies with Canadian ICES-003. Cet appareil numérique de la classe B est conforme à la norme NMB-003 du Canada.

CE Marking



This equipment complies with the requirements for CE marking when used in a residential, commercial, vehicular or light industrial environment.

R&TTE Directive

This equipment complies with the essential requirements of EU Directive 99/5/EC (declaration available at www.tomtom.com).

Diese Ausrüstung erfüllt die wesentlichen Anforderungen der EU-Richtlinie 99/5/EC (Erklärung verfügbar unter www.tomtom.com).

Cet équipement remplit les conditions édictées dans la Directive EC/99/5 (document disponible sur www.tomtom.com).

Deze apparatuur is conform de eisen van de EU-richtlijnen 99/5/EC (verklaring beschikbaar op www.tomtom.com).

Questa apparecchiatura soddisfa le condizioni essenziali della Direttiva Europea 99/5/EC (dichiarazione disponibile su www.tomtom.com).

Este equipo cumple con los requisitos esenciales de la Directiva 99/5/EC de la EU (declaración disponible en www.tomtom.com).

Deette udstyr overholder de grundlæggende krav i EU-direktiv 99/5/EC (erklæring herom kan findes på www.tomtom.com).

Denna utrustning rättar sig efter de nödvändiga krav från EU direktiv 99/5/EC (deklaration finns på www.tomtom.com).

Tämä laite täyttää oleellisilta osin EU:n direktiivin 99/5/EY vaatimukset (vaatimustenmukaisuusvakuutus on nähtävänä osoitteessa www.tomtom.com).

Este equipamento está em conformidade com os requisitos essenciais da Directiva da UE 99/5/CE (declaração disponível em www.tomtom.com).

TomTom tímto prohlašuje, že TomTom RIDER je ve shodě se základními požadavky a dalšími příslušnými ustanoveními směrnice 1995/5/ES (NV č. 426/2000 Sb.) a Prohlášení o shodě je k dispozici na www.tomtom.com. Toto zařízení lze provozovat v České republice na základě generální licence č. GL - 12/R/2000.

Seadmed vastavad EL direktiivi 99/5/EÜ põhinõuetele (vt www.tomtom.com).

A jelen berendezés megfelel az EU 99/5/EC direktívija meghatározta szűkséges előírásoknak (a nyilatkozat a www.tomtom.com honlapon található).

Ši įranga atitinka visus ES direktyvos 99/5/EB reikalavimus (deklaracijos tekstas tinklapyje www.tomtom.com).

Šis produkts atbilst visām ES noteiktajām Direktīvām 99/5/EC (deklarācija ir pieejama www.tomtom.com).

Sprzít ten jest zgodny z podstawowymi wymaganiami Dyrektywy UE 99/5/EC (deklaracja mozna pobrać ze strony internetowej www.tomtom.com).

TomTom tímto vyhlasuje, že TomTom RIDER spĺňa základné požadavky a všetky príslušné ustanovenia Smernice 1995/5/ES (NV č.443/2001 Z.z.) a Vyhlásenie o zhode je k dispozícii na www.tomtom.com. Toto zariadenie je možné prevádzkovať v Slovenskej republike na základe všeobecného povolenia č. VPR-01/2001.

Bu cihaz AB Direktifi 99/5/AT'nin (beyanat www.tomtom.com adresinde mevcuttur) zorunlu gerekliliklerine uygundur.

WEEE Directive



In line with EU Directive 2002/96/EC for waste electrical and electronic equipment (WEEE), this electrical product must not be disposed of as unsorted municipal waste. Please dispose of this product by returning it to the point of sale or to your local municipal collection point for recycling. For more information, see www.tomtom.com

In Übereinstimmung mit der Richtlinie 2002/96/EG des Europäischen Parlaments und des Rates über Elektro- und Elektronik-Altgeräte (WEEE) darf dieses Elektrogerät nicht im normalen Hausmüll oder dem Gelben Sack entsorgt werden. Wenn Sie dieses Produkt entsorgen möchten, bringen Sie es bitte zur Verkaufsstelle zurück oder zum Recycling-Sammelpunkt Ihrer Gemeinde. Weitere Informationen hierzu finden Sie unter www.tomtom.com

Conformément à la Directive 2002/96/EC sur les déchets d'équipements électriques et électroniques (DEEE), ce produit électrique ne doit en aucun cas être mis au rebut sous forme de déchet municipal non trié. Veuillez vous débarrasser de ce produit en le renvoyant à son point de vente ou au point de ramassage local dans votre municipalité, à des fins de recyclage. Pour plus d'informations, consultez le site www.tomtom.com

In navolging van richtlijn 2002/96/EG van het Europees Parlement en de Raad betreffende afgedankte elektrische en elektronische apparatuur (AEEA) mag dit elektrische product niet als ongescheiden huisvuil worden weggedaan. Breng dit product terug naar de plaats van aankoop of naar het gemeentelijke afvalinzamelingspunt voor recycling. Kijk voor meer informatie op www.tomtom.com

Zgodnie z Dyrektyw¹ Nr 2002/96/WE w sprawie zużytego sprzętu elektrycznego i elektronicznego (WEEE), niniejszego produktu elektrycznego nie wolno usuwać jako nie posortowanego odpadu komunalnego. Prosimy o usunięcie niniejszego produktu poprzez jego zwrot do punktu zakupu lub oddanie do miejscowego komunalnego punktu zbiórki odpadów przeznaczonych do recyklingu. W celu uzyskania bliższych informacji prosimy o przejście na stronę www.tomtom.com

V súlade so smernicou 2002/96/ES o odpade z elektrických a elektronických zariadení (OEEZ) sa toto elektrické zariadenie nesmie odstraňovať ako netriedený komunálny odpad. Vžrobok odstráňte jeho vrátením v mieste nákupu alebo odovzdaním v miestnom zbernom zariadení na recyklovanie. Viac informácií ziskáte na internetovej adrese www.tomtom.com

Atık elektrikli ve elektronik cihazlar konulu 2002/96/AT sayılı AB Direktifine (WEEE) uygun olarak bu cihaz, ayrılmaz bir belediye atıklarında birlikte atılmamalıdır. Lütfen bu ürünü, satış noktasına iade ederek veya belediyenizin geri dönüşüm için toplama merkezine götürerek atın. Daha fazla bilgi için, www.tomtom.com adresini ziyaret edin.

Ctick



N14644

This product displays the Ctick to show it complies with all relevant Australian and New Zealand regulations.

This Document

Great care was taken in preparing this manual. Constant product development may mean that some information is not entirely up-to-date. The information in this document is subject to change without notice.

TomTom International B.V. shall not be liable for technical or editorial errors or omissions contained herein; nor for incidental or consequential damages resulting from the performance or use of this material. This document contains information protected by copyright. No part of this document may be photocopied or reproduced in any form without prior written consent from TomTom International B.V.

Part numbers

TomTom RIDER: 4K00.001

Bluetooth headset: 4K00.002



Chapter 22

Copyright notices

© 2006 TomTom International B.V., The Netherlands.
Patents Pending. All rights reserved.
TomTom and the TomTom logo are registered trademarks of TomTom International B.V., The Netherlands. All other trademarks are the property of their respective owners.
Our end user license agreement and a limited warranty apply to this product; they are included in this package. You can also review both at www.tomtom.com/legal

Data Source
Benelux - ©1993-2006 NAVTEQ All Rights Reserved.
France - ©1993-2006 NAVTEQ All Rights Reserved.
Italy - ©1994-2006 NAVTEQ All Rights Reserved.
UK - ©1993-2006 NAVTEQ All Rights Reserved. This product includes mapping data licensed from Ordnance Survey. © Crown Copyright and/or database right 2006. License number 100044407
Sweden - ©1994-2006 NAVTEQ All Rights Reserved.
Finland - ©2001-2006 NAVTEQ All Rights Reserved.
Norway - ©2001-2006 NAVTEQ All Rights Reserved.
Denmark - ©1997-2006 NAVTEQ All Rights Reserved.
Germany - ©1993-2006 NAVTEQ All Rights Reserved.
Austria - ©1996-2006 NAVTEQ All Rights Reserved.
Switzerland © 1996-2006 NAVTEQ All Rights Reserved.
Portugal - ©1997-2006 NAVTEQ All Rights Reserved.
Spain - ©1997-2006 NAVTEQ All Rights Reserved.
US - ©2006 NAVTEQ All Rights Reserved.
Canada - ©2006 NAVTEQ All Rights Reserved.

Data Source
© Whereis® 2006 UBD® and Sensis® are trademarks of Telstra® Corporation Limited, used under license.

Free Manuals Download Website

<http://myh66.com>

<http://usermanuals.us>

<http://www.somanuals.com>

<http://www.4manuals.cc>

<http://www.manual-lib.com>

<http://www.404manual.com>

<http://www.luxmanual.com>

<http://aubethermostatmanual.com>

Golf course search by state

<http://golfingnear.com>

Email search by domain

<http://emailbydomain.com>

Auto manuals search

<http://auto.somanuals.com>

TV manuals search

<http://tv.somanuals.com>