

MULTIFUNCTIONAL DIGITAL SYSTEMS

Operator's Manual for Bluetooth Module

GN-2010

©2005 - 2009 TOSHIBA TEC CORPORATION All rights reserved

Under the copyright laws, this manual cannot be reproduced in any form without prior written permission of TTEC. No patent liability is assumed, however, with respect to the use of the information contained herein.


Preface


Thank you for purchasing TOSHIBA Multifunctional Digital Systems or Multifunctional Digital Color Systems. This manual explains the instructions for Bluetooth Module GN-2010. Read this manual before using your Multifunctional Digital Systems or Multifunctional Digital Color Systems. Keep this manual within easy reach, and use it to configure an environment that makes best use of the e-STUDIO's functions.

■ How to read this manual

□ Symbols in this manual

In this manual, some important items are described with the symbols shown below. Be sure to read these items before using this equipment.

 **WARNING** Indicates a potentially hazardous situation which, if not avoided, could result in death, serious injury, or serious damage, or fire in the equipment or surrounding objects.

 **CAUTION** Indicates a potentially hazardous situation which, if not avoided, may result in minor or moderate injury, partial damage to the equipment or surrounding objects, or loss of data.

Note

Indicates information to which you should pay attention when operating the equipment.

Other than the above, this manual also describes information that may be useful for the operation of this equipment with the following signage:

Tip

Describes handy information that is useful to know when operating the equipment.



Pages describing items related to what you are currently doing. See these pages as required.

□ Screens

- Screens on this manual may differ from the actual ones depending on how the equipment is used, such as the status of the installed options.
- The illustration screens used in this manual are for paper in the A/B format. If you use paper in the LT format, the display or the order of buttons in the illustrations may differ from that of your equipment.

□ Trademarks

- The official name of Windows 2000 is Microsoft Windows 2000 Operating System.
- The official name of Windows XP is Microsoft Windows XP Operating System.
- The official name of Windows Vista is Microsoft Windows Vista Operating System.
- The official name of Windows 7 is Microsoft Windows 7 Operating System.
- The official name of Windows Server 2003 is Microsoft Windows Server 2003 Operating System.
- The official name of Windows Server 2008 is Microsoft Windows Server 2008 Operating System.
- Microsoft, Windows, Windows NT, and the brand names and product names of other Microsoft products are trademarks of Microsoft Corporation in the US and other countries.
- Apple, AppleTalk, Macintosh, Mac, Mac OS, Safari, and TrueType are trademarks of Apple Inc. in the US and other countries.
- Adobe, Adobe Acrobat, Adobe Reader, Adobe Acrobat Reader, and PostScript are trademarks of Adobe Systems Incorporated.
- Mozilla, Firefox and the Firefox logo are trademarks or registered trademarks of Mozilla Foundation in the U.S. and other countries.
- IBM, AT and AIX are trademarks of International Business Machines Corporation.
- NOVELL, NetWare, and NDS are trademarks of Novell, Inc.
- TopAccess is a trademark of Toshiba Tec Corporation.
- Other company names and product names in this manual are the trademarks of their respective companies.

Precautions

■ Precautions for Use

This product is classified as “wireless equipment for stations of low-power data transmissions systems” under the Wireless Telegraphy Act, and does not require a radio transmission license. The law prohibits modification of the interior of this product.

■ About TOSHIBA Bluetooth Solution

The Bluetooth Module is with the Bluetooth version 1.1. The Bluetooth Adapter supports data rates up to 720kbps.

□ Bluetooth Wireless Technology Interoperability

Bluetooth module is designed to be interoperable with any product with Bluetooth wireless technology that is based on Frequency Hopping Spread Spectrum (FHSS) radio technology, and compliant to:

- The profile version 1.1 as defined and approved by the Bluetooth Special Interest Group.
- Logo certification with Bluetooth wireless technology as defined by the Bluetooth Special Interest Group.

Caution

Bluetooth wireless technology is a new innovative technology, and TOSHIBA has not confirmed compatibility of its Bluetooth™ products with all PCs and/or equipment using Bluetooth wireless technology.

□ Bluetooth and your Health

Bluetooth products, like other radio devices, emit radio frequency electromagnetic energy. The level of energy emitted by Bluetooth devices however is far much less than the electromagnetic energy emitted by wireless devices like for example mobile phones.

Because Bluetooth products operate within the guidelines found in radio frequency safety standards and recommendations, TOSHIBA believes Bluetooth is safe for use by consumers. These standards and recommendations reflect the consensus of the scientific community and result from deliberations of panels and committees of scientists who continually review and interpret the extensive research literature.

In some situations or environments, the use of Bluetooth may be restricted by the proprietor of the building or responsible representatives of the organisation. These situations may for example include:

- Using the Bluetooth equipment on board of aeroplanes, or
- In any other environment where the risk of interference to other devices or services is perceived or identified as harmful.

If you are uncertain of the policy that applies on the use of wireless devices in a specific organisation or environment (e.g. airports), you are encouraged to ask for authorisation to use the Bluetooth device prior to turning on the equipment.

□ Safety Instruction for Wireless Products

If your computer has wireless function, all safety instructions must be read carefully and must be fully understood, before attempting to use our Wireless Products.

This manual contains the safety instructions that must be observed in order to avoid potential hazards that could result in personal injuries or could damage your Wireless Products.

Limitation of Liability

For damage occurring due to an earthquake or thunder, fire beyond our responsibility, action by third party, other accident, intentional or accidental mistakes by a user, misuse, use under abnormal conditions, we do not take any responsibility.

For incidental damage (loss of business profit, business interruption, etc.) occurring due to use or disability of the product, we do not take any responsibility.

For damage occurring due to non observance of the contents described in the instruction manual, we do not take any responsibility.

For damage occurring due to erroneous operation or hang up caused by use in combination with products not related to our company, we do not take any responsibility.

WARNING



Keep this product away from a cardiac pacemaker at least 22 cm.

Radio waves can potentially affect cardiac pacemaker operation, thereby causing respiratory troubles.

Do not use the product inside a medical facility or near medical electric equipment. Radio waves can potentially affect medical electric equipment, thereby causing an accident due to malfunction.

Do not use the product near an automatic door, fire alarm or other automatic control equipment.

Radio waves can potentially affect automatic control equipment, thereby causing an accident due to malfunction.

Monitor possible radio interference or other troubles to other equipment while the product is used. If any effect is caused, do not use the product.

Otherwise, radio waves can potentially affect other equipment, thereby causing an accident due to malfunction.

Bluetooth™ and Wireless LAN device operate within the same radio frequency range and may interfere with one another.

If you use Bluetooth™ and Wireless LAN devices simultaneously, you may occasionally experience a less than optimal network performance or even lose your network connection.

NOTE

Do not use the product in the following places:

Places near a microwave oven where a magnetic field generates and places where static electricity or radio interference generates.

Depending on environment, radio waves can not reach to the product.

Approved Countries/Region for use for the Toshiba Bluetooth

This equipment is approved to the radio standard by the specific countries/regions.

Please ask Toshiba authorized dealer or service engineer.

□ Regulatory Information

The TOSHIBA Bluetooth Adapter must be installed and used in strict accordance with the manufacturer's instructions as described in the user documentation that comes with the product. This device complies with the following radio frequency and safety standards.

□ Canada - Industry Canada (IC)

This device complies with RSS 210 of Industry Canada.

Operation is subject to the following two conditions: (1) this device may not cause interference, and (2) this device must accept any interference, including interference that may cause undesired operation of this device.

L'utilisation de ce dispositif est autorisée seulement aux conditions suivantes: (1) il ne doit pas produire de brouillage et (2) l'utilisateur du dispositif doit être prêt à accepter tout brouillage radioélectrique reçu, même si ce brouillage est susceptible de compromettre le fonctionnement du dispositif.

The term "IC" before the equipment certification number only signifies that the Industry Canada technical specification were met.

□ Europe - EU Declaration of Conformity

This device complies with the essential requirements of the R&TTE Directive 1999/5/EC with essential test suites as per standards:

EN 300 328-2:

Electromagnetic compatibility and Radio Spectrum Matters (ERM); Wideband Transmission systems; Data transmission equipment operating in the 2,4 GHz ISM band and using spread spectrum modulation techniques

EN 301 489-17:

Electromagnetic compatibility and Radio Spectrum Matters (ERM); ElectroMagnetic Compatibility (EMC) standard for radio equipment and services;

Part 17: Specific conditions for 2,4 GHz wideband transmission systems and 5 GHz high performance RLAN equipment

EN 60950:

Safety of information technology equipment, including electrical business equipment (Tested to comply with the specified technical standards as a system)

Hereby, TOSHIBA TEC, declares that this GN-2010 is in compliance with the essential requirements and other relevant provisions of Directive 1999/5/EC.
TOSHIBA TEC vakuuttaa täten että GN-2010 tyyppinen laite on direktiivin 1999/5/EY oleellisten vaatimusten ja sitä koskevien direktiivin muiden ehtojen mukainen.
Hierbij verklaart TOSHIBA TEC dat het toestel GN-2010 in overeenstemming is met de essentiële eisen en de andere relevante bepalingen van richtlijn 1999/5/EG
Bij deze verklaart TOSHIBA TEC dat deze GN-2010 voldoet aan de essentiële eisen en aan de overige relevante bepalingen van Richtlijn 1999/5/EC.
Par la présente TOSHIBA TEC déclare que l'appareil GN-2010 est conforme aux exigences essentielles et aux autres dispositions pertinentes de la directive 1999/5/CE
Par la présente, TOSHIBA TEC déclare que ce GN-2010 est conforme aux exigences essentielles et aux autres dispositions de la directive 1999/5/CE qui lui sont applicables
Härmed intygar TOSHIBA TEC att denna GN-2010 står i överensstämmelse med de väsentliga egenskapskrav och övriga relevanta bestämmelser som framgår av direktiv 1999/5/EG.
Undertegnede TOSHIBA TEC erklærer herved, at følgende udstyr GN-2010 overholder de væsentlige krav og øvrige relevante krav i direktiv 1999/5/EF
Hiermit erklärt TOSHIBA TEC, dass sich dieser/diese/dieses GN-2010 in Übereinstimmung mit den grundlegenden Anforderungen und den anderen relevanten Vorschriften der Richtlinie 1999/5/EG befindet". (BMW i)
Hiermit erklärt TOSHIBA TEC die Übereinstimmung des Gerätes GN-2010 mit den grundlegenden Anforderungen und den anderen relevanten Festlegungen der Richtlinie 1999/5/EG. (Wien)
ΜΕ ΤΗΝ ΠΑΡΟΥΣΑ ΤΟSHIBA TEC ΔΗΛΩΝΕΙ ΟΤΙ GN-2010 ΣΥΜΜΟΡΦΩΝΕΤΑΙ ΠΡΟΣ ΤΙΣ ΟΥΣΙΩΔΕΙΣ ΑΠΑΙΤΗΣΕΙΣ ΚΑΙ ΤΙΣ ΛΟΙΠΕΣ ΣΧΕΤΙΚΕΣ ΔΙΑΤΑΞΕΙΣ ΤΗΣ ΟΔΗΓΙΑΣ 1999/5/ΕΚ
Η Toshiba TEC Corporation δηλώνει με το παρόν ότι το μοντέλο GN-2010 ασύρματου προσαρμογέα LAN συμμορφώνεται με τις βασικές απαιτήσεις και τις λοιπές σχετικές διατάξεις της Οδηγίας 1999/5/ΕΚ

Con la presente TOSHIBA TEC dichiara che questo GN-2010 è conforme ai requisiti essenziali ed alle altre disposizioni pertinenti stabilite dalla direttiva 1999/5/CE.
Por medio de la presente TOSHIBA TEC declara que el GN-2010 cumple con los requisitos esenciales y cualesquiera otras disposiciones aplicables o exigibles de la Directiva 1999/5/CE
TOSHIBA TEC declara que este GN-2010 está conforme com os requisitos essenciais e outras disposições da Directiva 1999/5/CE.
Toshiba TEC Corporation, GN-2010 model Kablosuz LAN Adaptörünün 1999/5/EC Tüzüğü'nün temel gereksinimlerine ve diğer ilgili uygulamalara uyduğunu beyan eder.
Thoshiba TEC Corpration timto prohlasuje, ze GN-2010 je ve shode se zakladnimi pozadavky a s dalsimi prislusnymi ustanoveni Narizeni vlady c. 426/2000 Sb.
Toshiba TEC Corporation declară prin prezenta că adaptorul fără fir LAN model GN-2010 este în conformitate cu cerințele esențiale și cu alte prevederi corespunzătoare ale Directivei 1999/5/EC

☐ USA-Federal Communications Commission (FCC)

This device complies with Part 15 of the FCC Rules. Operation is subject to the following two conditions : (1) this device may not cause harmful interference, and (2) this device must accept any interference received, including interference that may cause undesired operation.

This equipment complies with part 15 of the FCC rules. Any changes or modifications not expressly approved by the manufacturer could void the user's authority to operate the equipment.

CAUTION: To comply with FCC RF exposure compliance requirements, a separation distance of at least 20 cm must be maintained between this device and all persons.

☐ Singapore Portion

Complies with
IDA Standards
DA101747

■ NOTES!

- The unauthorized reproduction of this document, in whole or in part, is prohibited.
- The specifications, designs, and other contents of this document are subject to change without notice.
- The contents of this document are believed to be accurate, however if any discrepancies noted should be brought to the attention of TOSHIBA authorized dealer or service engineer.
- Notwithstanding the foregoing, the manufacturer is unable to accept any claims for losses or lost profits, etc. Resulting from the use of this product.
- TOSHIBA TEC will not guarantee the machine performance if you perform any setting other than specified in this manual.
- The Bluetooth word mark and logos are owned by the Bluetooth SIG, Inc.

CONTENTS

Preface.....	1
Precautions	2

Chapter 1 SETTING UP BLUETOOTH

Enabling Bluetooth.....	10
Setting up Bluetooth HCRP Printing	13
Setting up Bluetooth BIP/OPP/FTP Printing	14

Chapter 2 APPENDIX

Specification	16
---------------------	----

SETTING UP BLUETOOTH

This chapter describes the preparations before setting up the Bluetooth settings of the equipment.

Enabling Bluetooth	10
Setting up Bluetooth HCRP Printing	13
Setting up Bluetooth BIP/OPP/FTP Printing	14

Enabling Bluetooth

After installing the Bluetooth Module GN-2010 in your equipment, the BLUETOOTH SETTINGS screen will be available on the Touch Panel Display.

You can use the BLUETOOTH SETTINGS screen to enable or disable the Bluetooth and configure the Bluetooth setting options.

Notes

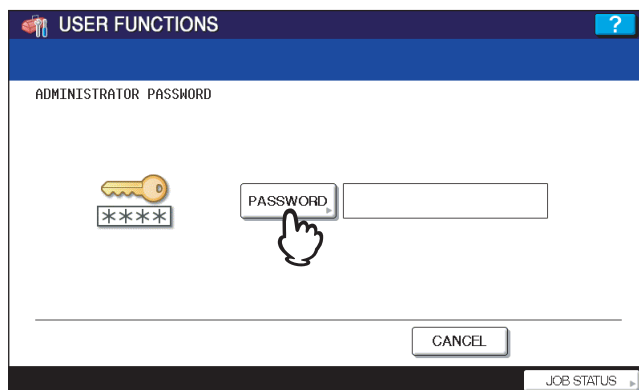
- When the Bluetooth Module is not correctly installed, the BLUETOOTH SETTINGS screen cannot be displayed. If you cannot display the BLUETOOTH SETTINGS screen even if the Bluetooth Module is installed, contact your service technician or product distributors.
- When the Bluetooth Module is installed in the e-STUDIO455 Series / e-STUDIO855 Series, the equipment enters into the Sleep mode, though the Super Sleep mode is enabled in the Energy Saver function.
- Screens of e-STUDIO455 Series are given in this manual as examples. If you use other model, its size and design differ from those of your equipment, but the name and function of each object remains the same.

1 Press the [USER FUNCTIONS] button on the control panel to enter the User Functions menu.

2 Press [ADMIN].

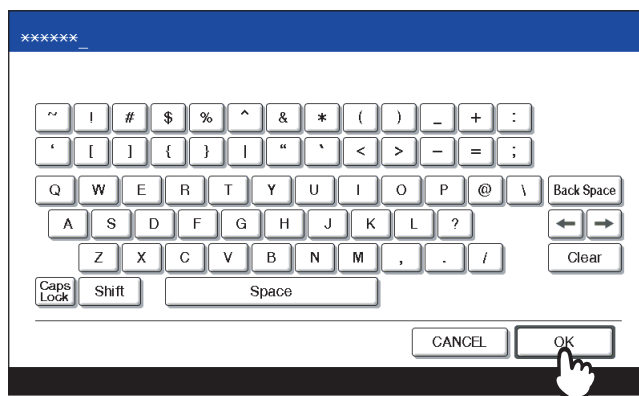
The ADMINISTRATOR PASSWORD screen is displayed.

3 Press [PASSWORD].



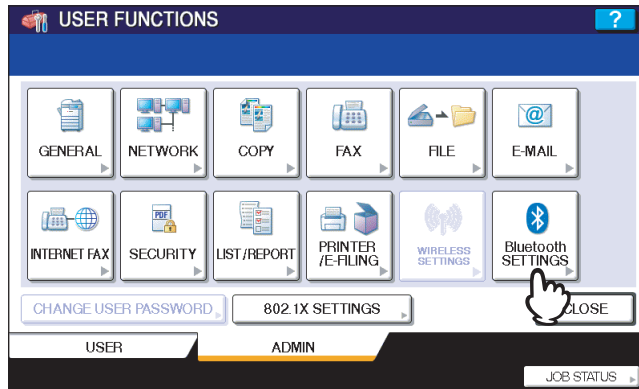
The input screen is displayed.

4 Enter the administrator password and press [OK].



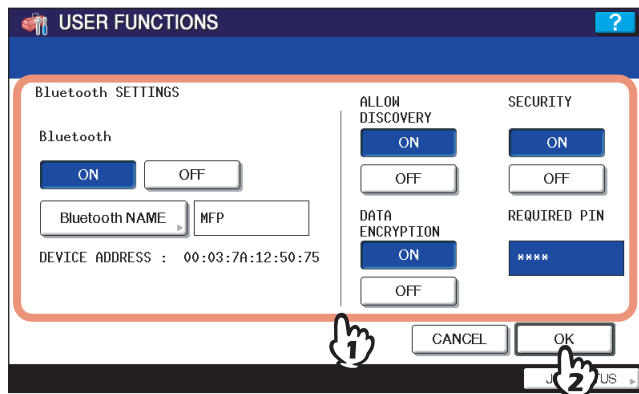
The ADMIN menu is displayed.

5 Press [Bluetooth SETTINGS].



The BLUETOOTH SETTINGS screen is displayed.

6 Specify the following items and press [OK].

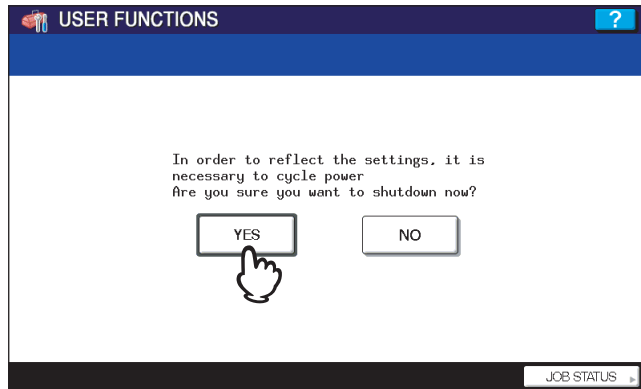


- Bluetooth**
 Select whether enabling or disabling Bluetooth.
- [Bluetooth NAME]**
 Press this to enter the device name that is displayed as the Bluetooth device. As the default, "MFP" has already been set for the Bluetooth name. Change this name if required. You can enter up to 32 characters.
- DEVICE ADDRESS**
 This displays the Bluetooth address. You cannot change this value.
- ALLOW DISCOVERY**
 Select whether all Bluetooth devices can find this equipment or not.
 When this function is enabled, all Bluetooth devices can find this equipment.
 When this function is disabled, the Bluetooth devices that have not been connected to this equipment before cannot find this equipment.
 If there are the Bluetooth devices that have not been connected to this equipment before, enable this function to connect.
- DATA ENCRYPTION**
 Select whether enabling or disabling the data encryption for the Bluetooth communication.
- SECURITY**
 Select whether to secure the Bluetooth connection using the PIN code. When you select the [ON], enter up to 8-digit PIN code in the [REQUIRED PIN] field using the digital keys.
 When this function is enabled, any Bluetooth devices must specify the PIN code to connect to this equipment.
 When this function is disabled, all Bluetooth devices do not require the PIN code to connect to this equipment.

Note

Up to 8-digit PIN code can be entered in the [REQUIRED PIN] field. The number of digits for the PIN code varies depending on the Bluetooth devices. For more information about the Bluetooth device that you use, please refer the documentation for the Bluetooth device.

7 Press [YES].



The Bluetooth settings apply after restarting the equipment.

Setting up Bluetooth HCRP Printing

1

When the Bluetooth is enabled, users can operate printing through the Bluetooth from Windows computers or Macintosh computers (Mac OS X 10.4.4 or later recommended) that have the Bluetooth module and have the capability for the HCRP connection.

Before setting up Bluetooth HCRP printing, please make sure the Bluetooth module that is installed in your computer supports the HCRP profile.

The instructions on how to set up the HCRP connection and the printer driver vary depending on the Bluetooth module that you connect or install on the computer. For instructions on how to set up the HCRP connection, please refer to the documentation of the Bluetooth module.

Please carefully read the documentation of the Bluetooth module for operation

Notes

- The “Enable SNMP Communication” option and the [Update Now] in the Configuration tab of the printer driver does not work for Bluetooth connection.
- More than two devices cannot connect to the equipment through Bluetooth at the same time.

Setting up Bluetooth BIP/OPP/FTP Printing

This equipment also supports Bluetooth BIP/OPP/FTP printing that allows users to print an image from any devices, such as mobile phones or digital cameras, with which the Bluetooth module is equipped and any by which standard BIP/OPP/FTP printing is supported.

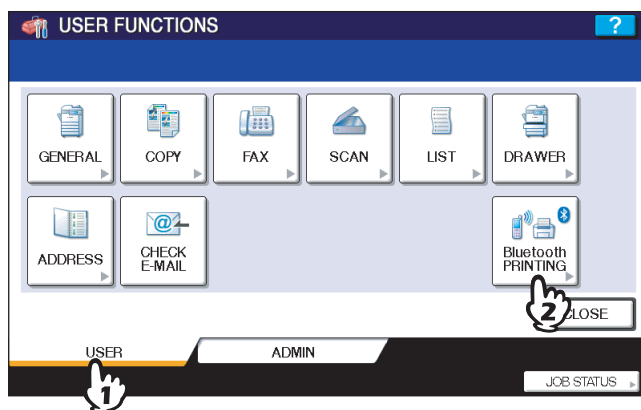
Before printing an image by BIP/OPP/FTP printing, configure the paper size and print type that apply to printing.

Notes

- The following formats can be on each profiles.
BIP: JPEG only
OPP, FTP: JPEG, PDF, PS, PRN, TXT
 The device supports PRN file that is generated by a TOSHIBA printer. The device does not support some file format versions through the file formats listed above. Such file can not be printed.
- Only the image files in the JPEG format can be printed. However, the JPEG format files peculiar to the device may not be printed.
- The specifications for Bluetooth may be different for devices. Not all devices can connect this equipment through Bluetooth.
- It takes a time to print a high-resolution JPEG file.
- More than two devices cannot connect to the equipment through Bluetooth at the same time.
- The destination tray will be the exit tray of this equipment even if the optional finisher is installed.
- Use one-byte alphanumeric characters for the name of the file to be printed, otherwise printing may not be performed.

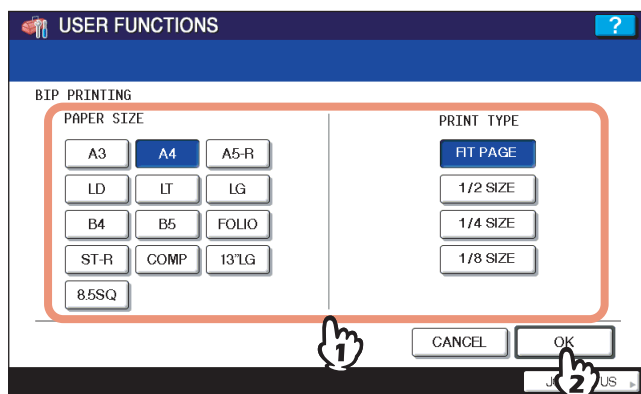
1 Press the [USER FUNCTIONS] button on the control panel to enter the User Functions menu.

2 Press [USER], and then press the [Bluetooth PRINTING] on the touch panel.



The Bluetooth Printing menu is displayed.

3 Specify the following items and press [OK].



- PAPER SIZE**
Select the paper size that an image will be printed on.
- PRINT TYPE**
Select the image size to be printed on a paper.

Note

Some MFP devices do not support the OPP/FTP function. For the details, ask the service technician.

APPENDIX

This chapter describes the specifications.

Specification	16
----------------------------	-----------

Specification

Item	Description
Standard	Bluetooth version 1.1 compliant
Frequency Band	2.4 GHz (2400 to 2483.5 GHz)
Data Rate	Max. 720 kbps (Asymmetric) Max. 430 kbps (Symmetric)
Radio Modulation	FHSS (Frequency Hopping Spread Spectrum)
Aerial Power	1 mW/MHz or below (Power Class 3)
Support Profile	HCRP, BIP, OPP, FTP (Receive only)
Bluetooth ON/OFF	Available
Wireless LAN/Bluetooth Simultaneous Operation	Available

MULTIFUNCTIONAL DIGITAL SYSTEMS
Operator's Manual for Bluetooth Module

GN-2010

TOSHIBA TEC CORPORATION

2-17-2, HIGASHIGOTANDA, SHINAGAWA-KU, TOKYO, 141-8664, JAPAN



Free Manuals Download Website

<http://myh66.com>

<http://usermanuals.us>

<http://www.somanuals.com>

<http://www.4manuals.cc>

<http://www.manual-lib.com>

<http://www.404manual.com>

<http://www.luxmanual.com>

<http://aubethermostatmanual.com>

Golf course search by state

<http://golfingnear.com>

Email search by domain

<http://emailbydomain.com>

Auto manuals search

<http://auto.somanuals.com>

TV manuals search

<http://tv.somanuals.com>