

TOSHIBA

**DIGITAL COLOR PLAIN PAPER COPIER
OPERATOR'S MANUAL
FOR PRINTER FUNCTION**

**NETWORK PRINTER CONTROLLER GA-1120/GA-1130
EASY SETUP GUIDE**

e-STUDIO 210c/310c

FCC NOTICE

This equipment has been tested and found to comply with the limits for a Class A digital device, pursuant to Part 15 of the FCC Rules. These limits are designed to provide reasonable protection against harmful interference when the equipment is operated in a commercial environment. This equipment generates, uses, and can radiate radio frequency energy and, if not installed and used in accordance with the instruction manual, may cause harmful interference to radio communications. Operation of this equipment in a residential area is likely to cause harmful interference in which case the user will be required to correct the interference at his own expense.

WARNING:

Changes or modification made to this equipment, not expressly approved by Toshiba Tec or parties authorized by Toshiba Tec could void the user's authority to operate the equipment.

"THIS DIGITAL APPARATUS DOES NOT EXCEED THE CLASS 'A' LIMITS FOR RADIO NOISE EMISSIONS FROM DIGITAL APPARATUS SET OUT IN THE RADIO INTERFERENCE REGULATIONS OF THE CANADIAN DEPARTMENT OF COMMUNICATIONS".

"LE PRESENT APPREIL NUMERIQUE N'EMET PAS DE BRUITS RADIOELECTRIQUES DEPASSANT LES APPLICABLES AUX APPAREILS NUMERIQUES DE LA CLASSE 'A' PRESCRITES DANS LE REGLEMENT SUR LE BROUILLAGE RAIODELECTRIQUE EDICTE PAR LE MINISTERE DES COMMUNICATIONS DU CANADA."

For European models only:

WARNING:

This product complies with Class A for network connection. In a domestic environment this product may cause radio interference in which case the user may be required to take adequate measures.

1. Do not touch the connector terminal when disconnecting the cables of peripheral equipment.
2. Before opening any covers or removing any units from the copier, discharge the static electricity from your body by touching a metal part of the copier.

This product is carrying the CE-Mark in accordance with the related European Directives. Responsible for CE-marking is TOSHIBA TEC GERMANY IMAGING SYSTEMS GmbH Carl-Schurz-Str. 7, 41460 Neuss, Germany.
e-mail: customerservice@toshibatec-tgis.com

No part of this manual may be copied in whole or part without permission.

The contents of this manual may change without notification.

Trademarks described in this manual:

- Ethernet is a registered trademark of US Xerox Corporation.
- The official name of Windows 95 is Microsoft Windows 95 Operating System.
- The official name of Windows 98 is Microsoft Windows 98 Operating System.
- The official name of Windows Me is Microsoft Windows Millennium Edition Operating System.
- The official name of Windows 2000 is Microsoft Windows 2000 Operating System.
- The official name of Windows XP is Microsoft Windows XP Operating System.
- Microsoft, Windows, Windows NT, Microsoft Internet Explorer, and the brand names and product names of other Microsoft products are trademarks or registered trademarks of US Microsoft Corporation in the US and other countries.
- Apple, AppleTalk, Macintosh, Mac OS, and LaserWriter are trademarks of US Apple Computer Inc. in the US and other countries.
- PostScript and PostScript Logo are trademarks of Adobe Systems Incorporated.
- IBM PC/AT is a registered trademark of US International Business Machine Corporation.
- Fiery, the Fiery logo are trademarks registered in the U.S. Patent and Trademark Office. NetWise is a trademark of Electronics For Imaging, Inc.
- AMD is a trademark of Advanced Micro Devices, Inc.
- Pentium and Celeron are trademarks or registered trademarks of Intel Corporation.
- Other company names and product names in this manual are the trademarks or registered trademarks of their respective companies.

Thank you for purchasing Toshiba Tec's GA-1120/GA-1130 Network Printer Controller. This EASY SETUP GUIDE explains how to setup the equipment for printing. Read this guide before setting up your e-STUDIO210c/310c with the GA-1120/GA-1130 Network Printer Controller. Keep this guide within easy reach, and use it to configure quality printing environment and make the best use of your printer's functions.

* For further details of printing functions, please see other manuals included on the CD-ROM such as QUICK START GUIDE, USER SOFTWARE INSTALLATION GUIDE, PRINTING GUIDE, CONFIGURATION GUIDE, JOB MANAGEMENT GUIDE, COLOR GUIDE, and FIERY COLOR REFERENCE.

EFI part number 45027815

TABLE OF CONTENTS

■ SETUP FLOW	3
SETUP FLOW	4
Setup Flow for Windows	4
For SMB Printing	4
For LPR Printing	5
For IPP Printing	6
For Novell Printing	7
Setup Flow for Macintosh	10
■ INSTALLING THE PRINTER DRIVER (Windows)	11
ABOUT INSTALLATION	12
System Requirements	12
About the Installation Procedure	12
INSTALLING THE PRINTER DRIVER	13
Installing the Printer Driver for SMB Printing	13
Point-and-Print Installation	14
Non Point-and-Print Installation	16
Installing the Printer Driver for LPR Printing	21
Windows NT 4.0	22
Windows 2000 and Windows XP	27
Installing the Printer Driver for IPP Printing	34
Installing the Printer Driver for Novell Printing	39
Windows 95/98/Me	40
Windows NT 4.0/2000/XP	44
CONFIGURING THE OPTIONS	47
Configuring the Options Manually	47
Windows 95/98/Me	47
Windows NT 4.0/2000/XP	50
Configuring the Options Automatically	52
■ INSTALLING THE PRINTER DRIVER (Macintosh)	53
ABOUT INSTALLATION	54
System Requirements	54
INSTALLING THE PRINTER DRIVER	55
Installing the Printer Driver to Macintosh	55
Installing the AdobePS 8.7.2 Printer Driver	55
Creating the AdobePS Printer	57
Appendix for Booklet Printing on Macintosh	60
Printing a Portrait Booklet	60
Printing a Landscape Booklet	61

SETUP FLOW

SETUP FLOW

After completing each procedure, please mark the checkbox () in front of each procedure so that you can make sure completed each step for setup.

Setup Flow for Windows

For SMB Printing

Connecting the GA-1120/GA-1130

Connect the GA-1120/GA-1130 to your network with a network cable.

REFERENCE

▼ CONFIGURATION GUIDE

▼ Chapter 1: Connecting to the Network

- ▶ Connecting network cable to the GA-1120/GA-1130

Setting up TCP/IP

Configure the TCP/IP Setup options to assign the IP Address, Subnet Mask, and Gateway Address on the GA-1120/GA-1130 to enable Fieri WebSetup from the Control Panel.

REFERENCE

▼ CONFIGURATION GUIDE

▼ Chapter 4: Performing Setup from the Control Panel

▼ Network Setup options

▼ Protocol Setup options

- ▶ TCP/IP Setup options

Setting up the Printing Service

Configure the Windows Print Sharing to enable the Windows Printing Service from Fieri WebSetup or Command WorkStation.

REFERENCE

▼ CONFIGURATION GUIDE

▼ Chapter 5: Setting up the GA-1120/GA-1130 from a Windows Computer

▼ Network Setup

- ▶ Windows Print Sharing (SMB)

Installing the Printer Driver

Install the printer driver to use SMB printing.

REFERENCE

- ▶ P.13 “Installing the Printer Driver for SMB Printing”

Configuring the Options

Configure the option settings on the printer driver.

REFERENCE

- ▶ P.47 “CONFIGURING THE OPTIONS”

For LPR Printing

LPR Printing is only available for Windows NT 4.0, Windows 2000, and Windows XP.

Connecting the GA-1120/GA-1130

Connect the GA-1120/GA-1130 to your network with a network cable.

REFERENCE

- ▼ CONFIGURATION GUIDE
 - ▼ Chapter 1: Connecting to the Network
 - ▶ Connecting network cable to the GA-1120/GA-1130

Setting up TCP/IP

Configure the TCP/IP Setup options to assign the IP Address, Subnet Mask, and Gateway Address on the GA-1120/GA-1130 to enable Fiery WebSetup from the Control Panel.

REFERENCE

- ▼ CONFIGURATION GUIDE
 - ▼ Chapter 4: Performing Setup from the Control Panel
 - ▼ Network Setup options
 - ▼ Protocol Setup options
 - ▶ TCP/IP Setup options

❑ **Setting up the Printing Service**

Configure the LPD Printing to enable the LPD Printing Service from Fiery WebSetup or Command WorkStation.

REFERENCE

▼ CONFIGURATION GUIDE

▼ Chapter 5: Setting up the GA-1120/GA-1130 from a Windows Computer

▼ Network Setup

▼ Services

➤ LPD Printing

❑ **Installing the Printer Driver**

Install the printer driver to use LPR printing.

REFERENCE

➤ P.21 “Installing the Printer Driver for LPR Printing”

❑ **Configuring the Options**

Configure the option settings on the printer driver.

REFERENCE

➤ P.47 “CONFIGURING THE OPTIONS”

For IPP Printing

IPP Printing is only available for Windows 2000 and Windows XP.

❑ **Connecting the GA-1120/GA-1130**

Connect the GA-1120/GA-1130 to your network with a network cable.

REFERENCE

▼ CONFIGURATION GUIDE

▼ Chapter 1: Connecting to the Network

➤ Connecting network cable to the GA-1120/GA-1130

□ Setting up TCP/IP

Configure the TCP/IP Setup options to assign the IP Address, Subnet Mask, and Gateway Address on the GA-1120/GA-1130 to enable Fiery WebSetup from the Control Panel.

REFERENCE

- ▼ CONFIGURATION GUIDE
 - ▼ Chapter 4: Performing Setup from the Control Panel
 - ▼ Network Setup options
 - ▼ Protocol Setup options
 - TCP/IP Setup options

□ Installing the Printer Driver

Install the printer driver to use IPP printing.

REFERENCE

- P.34 “Installing the Printer Driver for IPP Printing”

□ Configuring the Options

Configure the option settings on the printer driver.

REFERENCE

- P.47 “CONFIGURING THE OPTIONS”

For Novell Printing

A NetWare server is required in your network for Novell Printing.

□ Connecting the GA-1120/GA-1130

Connect the GA-1120/GA-1130 to your network with a network cable.

REFERENCE

- ▼ CONFIGURATION GUIDE
 - ▼ Chapter 1: Connecting to the Network
 - Connecting network cable to the GA-1120/GA-1130

□ **Setting up the NetWare Server**

Configure the NetWare Server for printing with GA-1120/GA-1130.

REFERENCE

- ▼ CONFIGURATION GUIDE
 - ▼ Chapter 2: Setting up Network Servers
 - GA-1120/GA-1130 on a NetWare 4.x or 5.x network
 - GA-1120/GA-1130 on a NetWare 5.x network with NDPS

□ **Setting up TCP/IP**

Configure the TCP/IP Setup options to assign the IP Address, Subnet Mask, and Gateway Address on the GA-1120/GA-1130 to enable Fiery WebSetup from the Control Panel.

REFERENCE

- ▼ CONFIGURATION GUIDE
 - ▼ Chapter 4: Performing Setup from the Control Panel
 - ▼ Network Setup options
 - ▼ Protocol Setup options
 - TCP/IP Setup options

□ **Setting up IPX/SPX (when using NetWare in IPX/SPX network)**

Configure the IPX/SPX frame type for the GA-1120/GA-1130 from Fiery WebSetup or Command WorkStation.

REFERENCE

- ▼ CONFIGURATION GUIDE
 - ▼ Chapter 5: Setting up the GA-1120/GA-1130 from a Windows Computer
 - ▼ Network Setup
 - ▼ Protocols
 - IPX/SPX

□ **Setting up the Printing Service**

Enable the PServer Setup options and NDS Setup options (when using in NDS/NDPS mode), or Bindery Setup options (when using in Bindery mode) from Fiery WebSetup or Command WorkStation.

REFERENCE

- ▼ CONFIGURATION GUIDE
 - ▼ Chapter 5: Setting up the GA-1120/GA-1130 from a Windows Computer

- ▼ Network Setup
 - ▼ Services
 - ▶ NetWare Printing (PServer) options

□ Installing the Printer Driver

Install the printer driver to use Novell printing.

REFERENCE

- ▶ P.39 “Installing the Printer Driver for Novell Printing”

□ Configuring the Options

Configure the option settings on the printer driver.

REFERENCE

- ▶ P.47 “CONFIGURING THE OPTIONS”

Setup Flow for Macintosh

Connecting the GA-1120/GA-1130

Connect the GA-1120/GA-1130 to your network with a network cable.

REFERENCE

▼ CONFIGURATION GUIDE

▼ Chapter 1: Connecting to the Network

- Connecting network cable to the GA-1120/GA-1130

Setting up AppleTalk

Enable the AppleTalk on the GA-1120/GA-1130 from the Control Panel.

REFERENCE

▼ CONFIGURATION GUIDE

▼ Chapter 4: Performing Setup from the Control Panel

▼ Network Setup options

▼ Protocol Setup options

- AppleTalk Setup

Installing the Printer Driver

Install the AdobePS driver and create the printer on a Macintosh computer.

REFERENCE

- P.55 "Installing the Printer Driver to Macintosh"

INSTALLING THE PRINTER DRIVER (Windows)

ABOUT INSTALLATION

Before installing the printer driver on your computer, read this section to understand the installation.

System Requirements

To install the printer drivers on a Windows computer, the following is required.

Hardware: PC/AT compatible with an 80486, AMD, or Pentium processor

OS: Windows 95, Windows 98, Windows Me, Windows NT 4.0 with Service Pack 6
Windows 2000 with Service Pack 2, Windows XP

Memory: 8MB or more for printing
(32 MB for using other utilities)

About the Installation Procedure

Please find the installation procedure suited to your environment from the following;

SMB Printing for Windows 9x/Me/NT 4.0/2000/XP

As for the GA-1130, install the printer driver from a network print queue (for Windows 9x/Me/NT 4.0) or configure the network port and install the printer driver from the CD-ROM using the installer (for Windows 2000/XP). As for the GA-1120, install the printer driver from a network queue (for Windows 9x/Me) or configure the port and install the printer driver from the CD-ROM using the installer (for Windows NT 4.0/2000/XP).

► P.13 “Installing the Printer Driver for SMB Printing”

LPR Printing for Windows for Windows NT 4.0/2000/XP

Configure the LPR port and install the printer driver by the installer from the User Software CD-ROM.

► P.21 “Installing the Printer Driver for LPR Printing”

IPP Printing for Windows for Windows 2000/XP

Installing the printer driver by Add Printer Wizard.

► P.34 “Installing the Printer Driver for IPP Printing”

Novell Printing for Windows 9x/Me/NT 4.0/2000/XP

Installing the printer driver from a network print queue.

► P.39 “Installing the Printer Driver for Novell Printing”

SUPPLEMENT:

After installing the printer driver, configure the installable options correctly to use the printer driver functionally.

► P.47 “CONFIGURING THE OPTIONS”

INSTALLING THE PRINTER DRIVER

Installing the Printer Driver for SMB Printing

PREPARATIONS:

Before installing the printer driver to use SMB printing, please make sure of the following:

- If a previous version of the printer driver has been installed on the system, it must be removed. (See instructions on this in the User Software Installation Guide.)
- The GA-1120/GA-1130 printer is connected to the network and turned on.
- The TCP/IP setting is completed correctly.
- The Windows Printing is completed correctly.

The procedure to Install the printer driver to use SMB printing is different depending on the version of the Windows. Also the procedure is different which printer controller, GA-1120 or GA-1130, is installed on your copier.

When the GA-1120 is installed:

When installing the printer on Windows 95, Windows 98, and Windows Me, the GA-1120 supports the Point-and-Print installation. In Point-and-Print installation, you can download the printer driver from the GA-1120 print server.

► P.14 "Point-and-Print Installation"

When using the printer on Windows NT 4.0, Windows 2000, and Windows XP, configure the network port first, and install the printer driver from the User Software CD-ROM since the GA-1120 does not support the Point-and-Print installation.

► P.16 "Non Point-and-Print Installation"

When the GA-1130 is installed:

When installing the printer on Windows 95, Windows 98, Windows Me, and Windows NT 4.0, the GA-1130 supports the Point-and-Print installation. In Point-and-Print installation, you can download the printer driver from the GA-1130 print server.

► P.14 "Point-and-Print Installation"

When using the printer on Windows 2000, and Windows XP, configure the network port first, and install the printer driver from the User Software CD-ROM since the GA-1130 does not support the Point-and-Print installation.

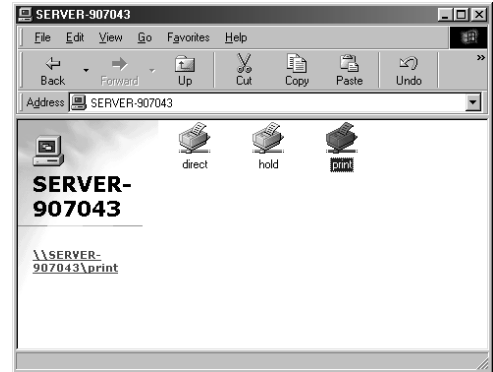
► P.16 "Non Point-and-Print Installation"

Point-and-Print Installation

The procedure here describes an installation on Windows 98. The procedures are the same when other versions of Windows are used.

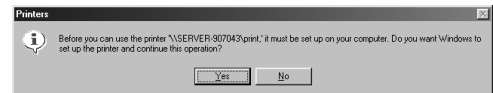
1 Open the GA-1120/GA-1130 printer in the Network Neighborhood with the Windows Explorer, and double-click on a queue.

- Select a queue depending on how you want to print.
 - direct** - print jobs are sent straight to the printer without spooling.
 - hold** - print jobs are held until users operate copying or moving them to the Print queue with the job management tools.
 - print** - print jobs are spooled to the hard disk in the GA-1120/GA-1130 printer and printed out. Use this queue for general printing.
- The Printers screen appears.

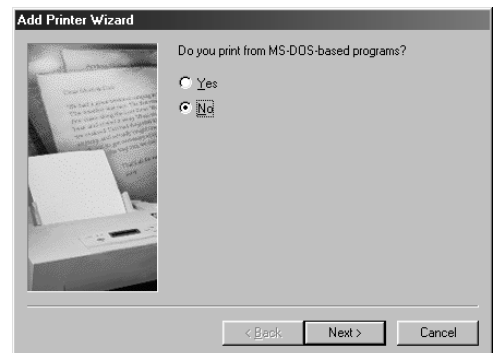


2 Click on [Yes].

- When installing to Windows 95, Windows 98, or Windows Me, the Add Printer Wizard screen appears. Continue to next step.
- When installing to Windows NT 4.0, the printer is installed and the print queue screen appears. Continue to Step 7.

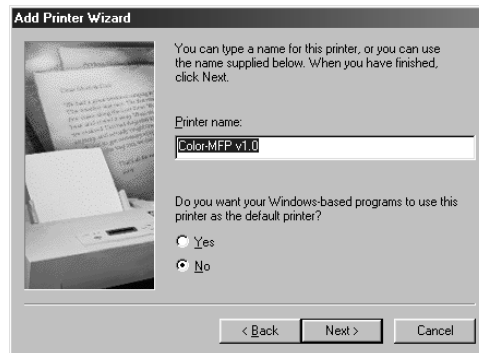


3 Select whether printing MS-DOS-based programs and click on [Next].

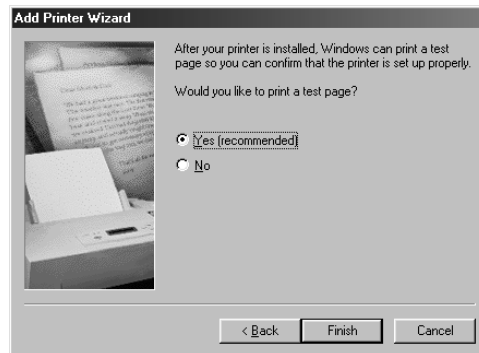


4 Change the name if desired, select whether using this printer as a default printer, and click on [Next].

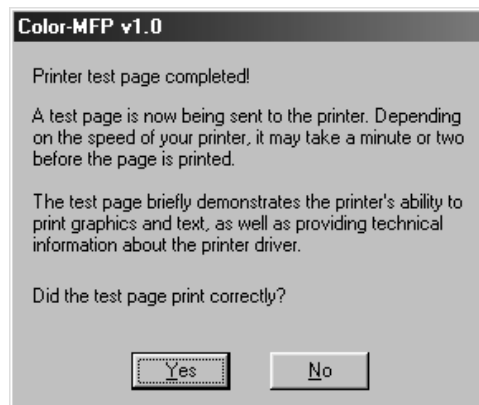
- When no printer is installed on your computer, the selection is not displayed on the screen and this printer is used as a default printer automatically.



5 Select “Yes” to print a test page and click on [Finish].



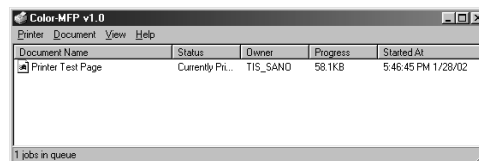
6 Make sure a test page is printed successfully and click on [Yes] to close the screen.



7 The printer driver is installed and the print queue screen appears.

Continue the operation to configure the option settings on the printer driver.

► P.47 “CONFIGURING THE OPTIONS”



Non Point-and-Print Installtion

When the printer does not support the Point-and-Print installation, configure the network port first, and then install the printer driver using the installer in the CD-ROM to set up SMB printing.

The procedure here describes an installation on Windows 2000. The procedures are the same when other versions of Windows are used.

Caution for GA-1130 Users:

When you are running Windows 2000 or Windows XP, do not install the printer driver by double-clicking the network print queue on the GA-1130 printer that appears in “My Network Places”. Although the printer driver is automatically installed on your Windows 2000 or Windows XP by you double-clicking on the network print queue on the GA-1130 printer, the downloaded driver from the network print queue is not compatible to Windows 2000 and Windows XP.

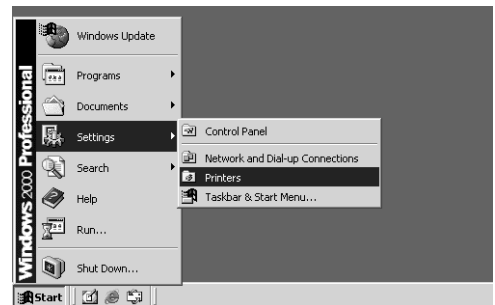
When you would like to install the printer driver to Windows 2000 or Windows XP for SMB printing, follow the instruction here to install the printer driver using the installer in the User Software CD-ROM.

REQUIREMENT:

You must log into Windows as a user who has the “Administrators” or “Power Users” privilege.

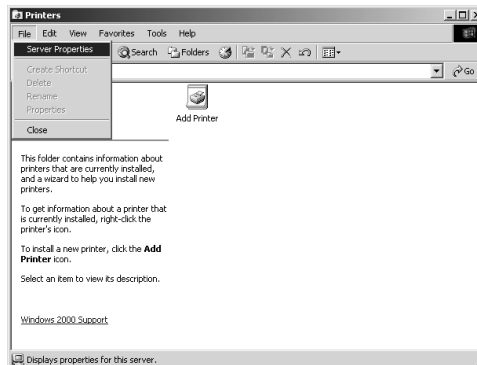
1 Click on [Start] and select [Printers] in [Settings] (Windows 2000) or select [Printers and Faxes] (Windows XP).

- The Printers folder is opened.



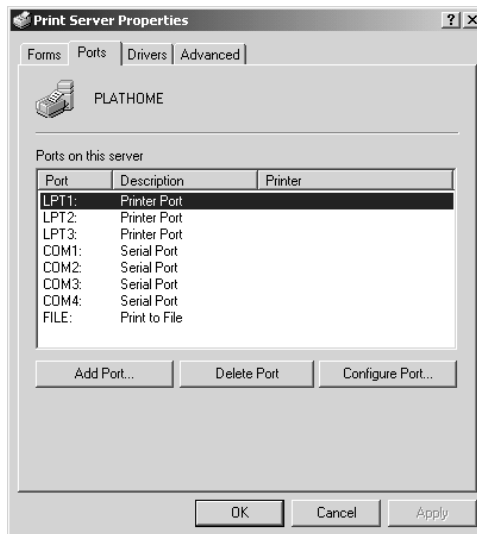
2 Click on [File] and select [Server Properties].

- The Printer Server Properties screen appears.



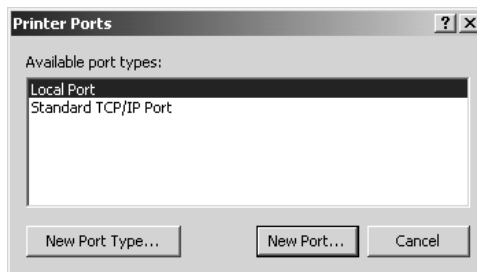
3 Click on the [Ports] tab and click on [Add Port...].

- The Printer Ports screen appears.



4 Select "Local Port" and click on [New Port...].

- The Port Name screen appears.



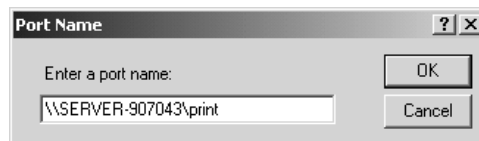
5 Enter “\\[Server Name][Queue Name]” in the “Enter a port name” field, and click on [OK].

- The [Server Name] of the port name must be the server name that you entered for the Server Name of the Windows Printing Service at the GA-1120/GA-1130 printer setup.
- The [Queue Name] of the port name must be a queue name, direct, hold, or print, on the GA-1120/GA-1130 printer. Enter a queue depending on how you want to print.

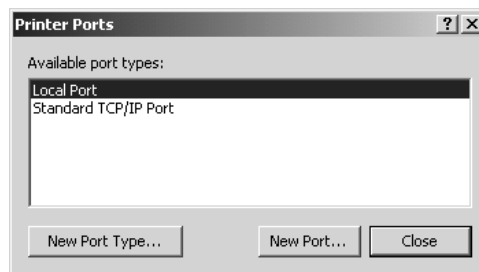
direct - print jobs are sent straight to the printer without spooling.

hold - print jobs are held until users operate copying or moving them to the Print queue with the job management tools.

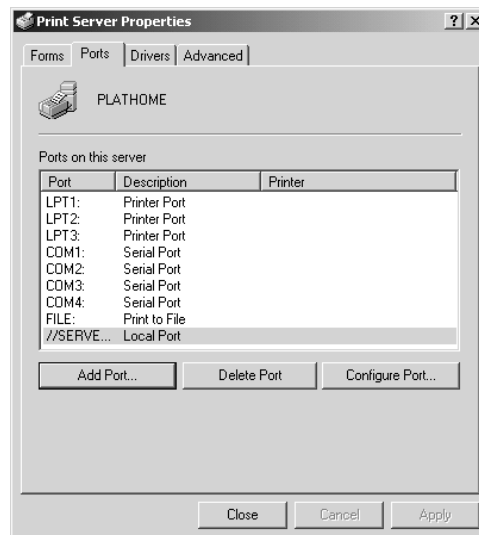
print - print jobs are spooled to the hard disk in the GA-1120/GA-1130 printer and printed out. Use this queue for general printing.



6 Click on [Close] to close the screen.

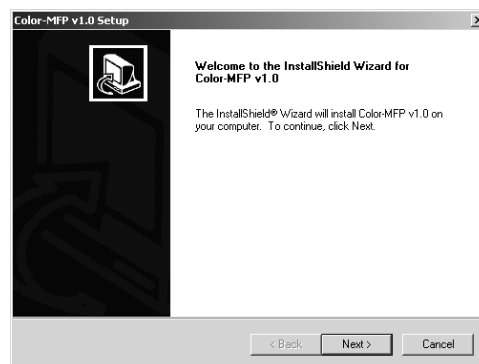


- 7** Click on [Close] to close the screen.
- The port is added in the “Ports on this server” list.



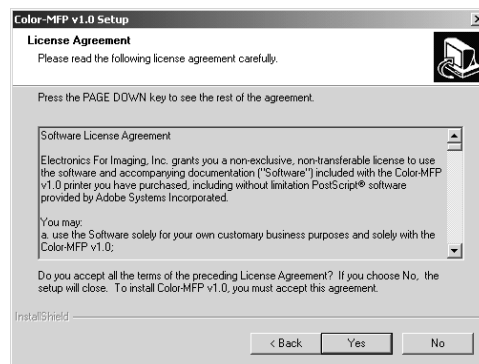
- 8** Insert the CD-ROM into the CD-ROM drive.
- The installer automatically starts and the Color-MFP v1.0 Setup screen appears.

SUPPLEMENT:
When the installer does not automatically start, double-click on “Setup.exe” in the “Installr” folder of the CD-ROM.



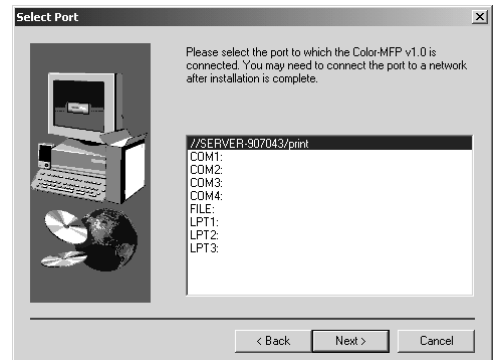
- 9** Click on [Next].
- The Software License Agreement screen appears.

- 10** Click on [Yes].
- The Setup Type screen appears.



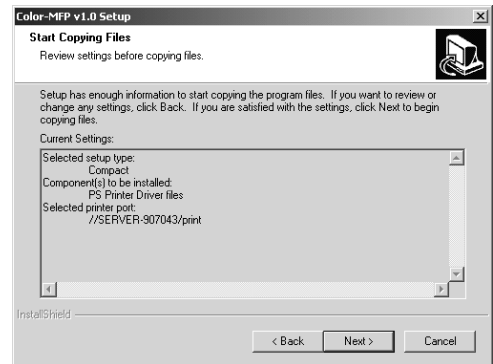
11 Select the port that you create and click on [Next].

- The Start Copying Files screen appears.



12 Click on [Next].

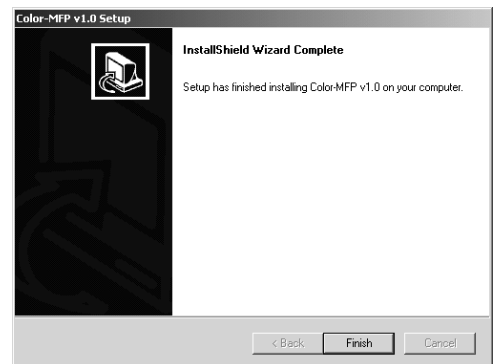
- Start copying files.



13 Click on [Finish].

14 The printer driver is installed. Continue the operation to configure the option settings on the printer driver.

- P.47 "CONFIGURING THE OPTIONS"



Installing the Printer Driver for LPR Printing

PREPARATIONS:

Before installing the printer driver to use LPR printing, please make sure of the following:

- The GA-1120/GA-1130 printer is connected to the network and turned on.
- The TCP/IP setting is completed correctly.
- The LPD Printing is completed correctly.

LPR printing is available only for Windows NT 4.0, Windows 2000, and Windows XP. The procedure to install the printer driver to use LPR printing is different depending on the version of the Windows.

- ▶ P.22 "Windows NT 4.0"
- ▶ P.27 "Windows 2000 and Windows XP"

Windows NT 4.0

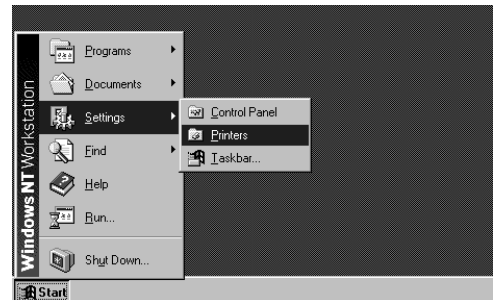
REQUIREMENTS:

- The TCP/IP Printing Service is installed and running on your Windows NT 4.0.
- The TCP/IP protocol is installed and configured correctly on your Windows NT 4.0.
- You must log into Windows as a user who has the “Administrators” or “Power Users” privilege.

To install the printer driver to use LPR printing, configure the LPR port first, and then install the printer driver using the installer in the User Software CD-ROM.

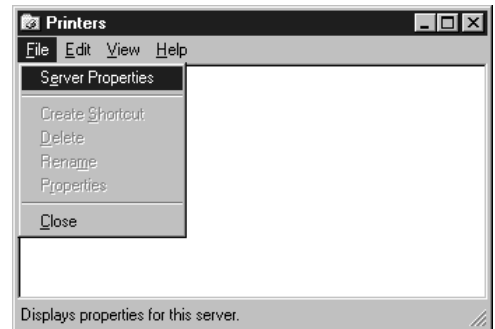
1 Click on [Start] and select [Printers] in [Settings].

- The Printers folder is opened.



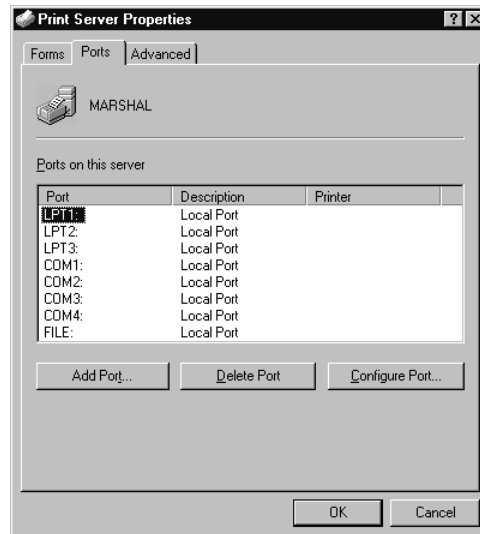
2 Click on [File] and select [Server Properties].

- The Printer Server Properties screen appears.



3 Click on the [Ports] tab and click on [Add Port...].

- The Printer Ports screen appears.

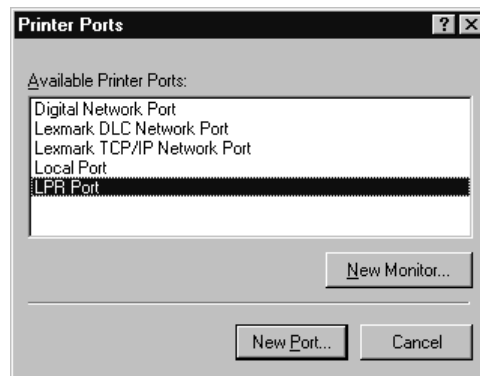


4 Select “LPR Port” and click on [New Port...].

- The Add LPR compatible printer screen appears.

SUPPLEMENT:

When “LPR Port” is not listed in the “Available Printer Ports” list, make sure the TCP/IP Printing Service is installed on your Windows NT 4.0. “LPR Port” is not listed unless the TCP/IP Printing Service is installed.



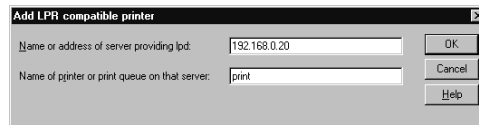
5 Enter the IP address of the GA-1120/GA-1130 printer in the “Name or address of server providing lpd” field and a queue name in the “Name of printer or print queue on that server” field, and click on [OK]

- When you use the WINS server, enter the print server name of the GA-1120/GA-1130 printer provided from the WINS server in the “Name or address of server providing lpd” field.
- In the “Name of printer or print queue on that server” field, you have to enter a queue name, direct, hold, or print, on the GA-1120/GA-1130 printer. Enter a queue depending on how you want to print.

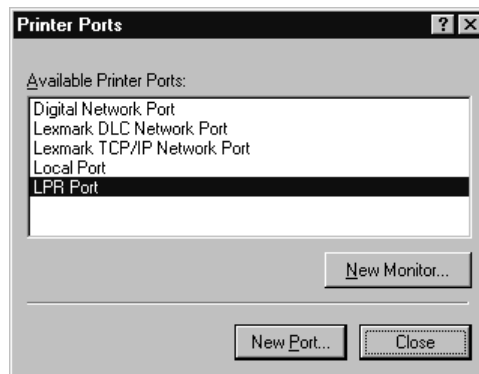
direct - print jobs are sent straight to the printer without spooling.

hold - print jobs are held until users operate copying or moving them to the Print queue with the job management tools.

print - print jobs are spooled to the hard disk in the GA-1120/GA-1130 printer and printed out. Use this queue for general printing.

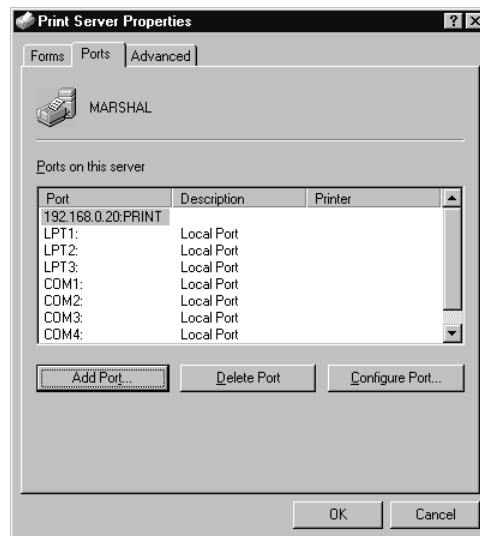


6 Click on [Close] to close the screen.



7 Click on [OK] to close the screen.

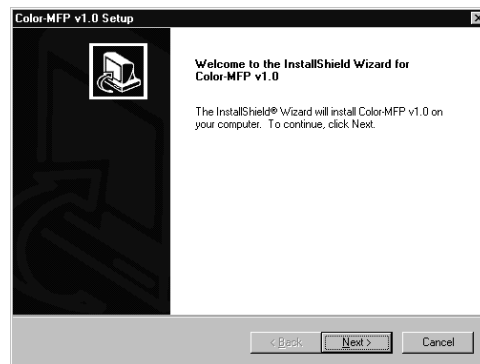
- The LPR Port is added in the “Ports on this server” list.



8 Insert the CD-ROM into the CD-ROM drive.

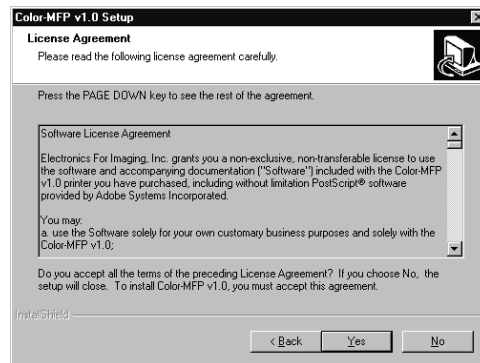
- The installer automatically starts and the Color-MFP v1.0 Setup screen appears.

SUPPLEMENT:
When the installer does not automatically start, double-click on “Setup.exe” in the “Installr” folder of the CD-ROM.



9 Click on [Next].

- The Software License Agreement screen appears.

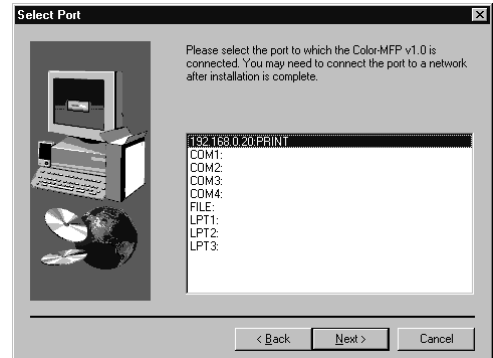


10 Click on [Yes].

- The Setup Type screen appears.

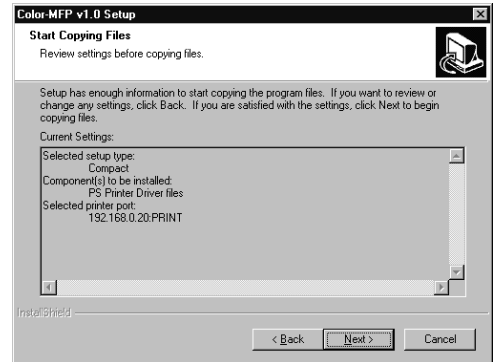
11 Select the port that you create and click on [Next].

- The Start Copying Files screen appears.



12 Click on [Next].

- Start copying files.

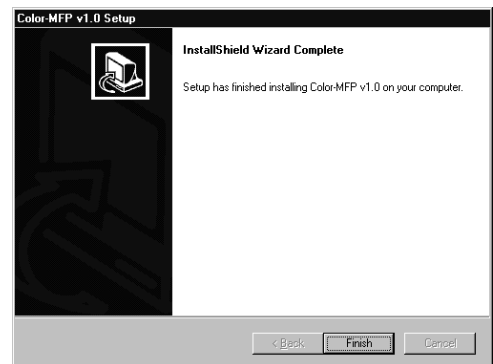


13 Click on [Finish].

14 The printer driver is installed.

Continue the operation to configure the option settings on the printer driver.

- P.47 "CONFIGURING THE OPTIONS"



Windows 2000 and Windows XP

REQUIREMENTS:

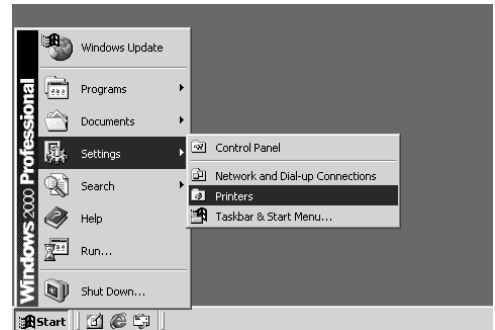
- The TCP/IP protocol is installed and configured correctly on your Windows 2000/XP.
- You must log into Windows as a user who has the “Administrators” or “Power Users” privilege.

To install the printer driver to use LPR printing, configure the LPR port first, and then install the printer driver using the installer in the User Software CD-ROM.

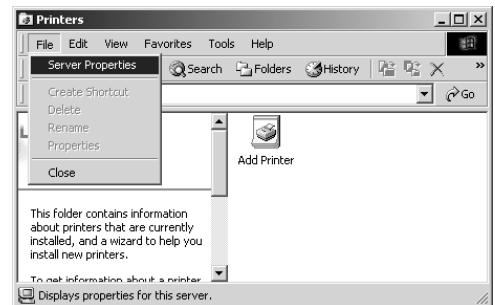
The procedure here describes an installation on Windows 2000. The procedures are the same when Windows XP is used.

- 1 Click on [Start] and select [Printers] in [Settings] (Windows 2000) or select [Printers and Faxes] (Windows XP).**

- The Printers folder is opened.

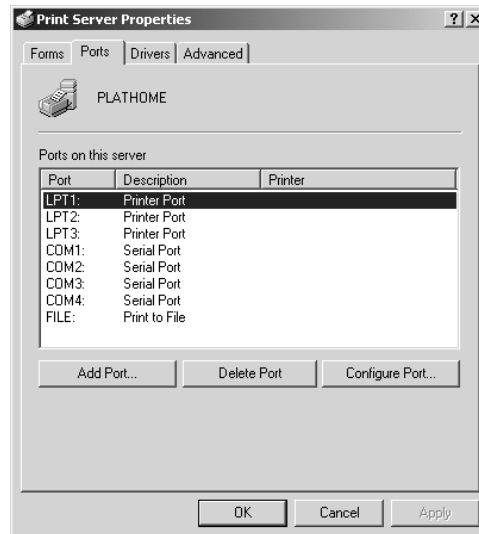


- 2 Click on [File] and select [Server Properties].**
- The Printer Server Properties screen appears.



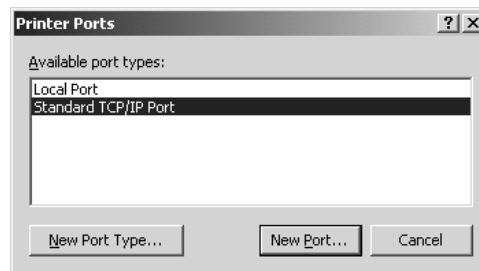
3 Click on the [Ports] tab and click on [Add Port...].

- The Printer Ports screen appears.



4 Select "Standard TCP/IP Port" and click on [New Port...].

- The Add Standard TCP/IP Printer Port Wizard screen appears.



5 Click on [Next].



6 Enter the IP address of the GA-1120/GA-1130 printer in the “Printer Name or IP Address” field and click on [Next].

- When you use a WINS server, enter the print server name of the GA-1120/GA-1130 printer provided from the WINS server in the “Printer Name or IP Address” field.
- In the “Port Name” field, the port name is automatically entered according to the IP address or printer name entered in the “Printer Name or IP Address” field.

7 Select “Custom” and click on [Settings...].

- The Configure Standard TCP/IP Port Monitor screen appears.

8 Select “LPR” at the “Protocol” option, enter a queue name in the “Queue Name” field at the “LPR Settings” option, and then click on [OK].

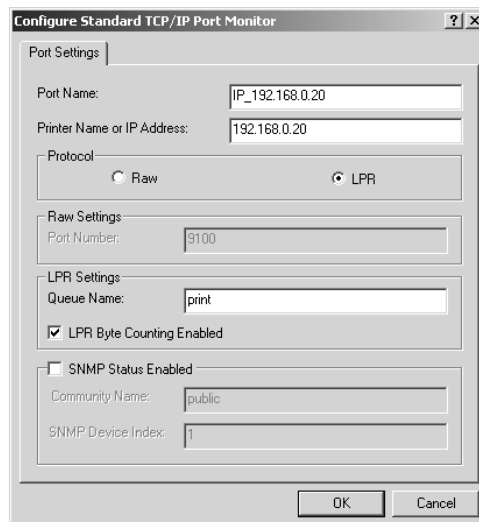
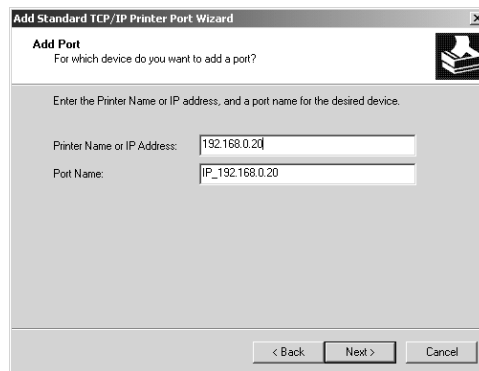
- In the “Queue Name” field, you have to enter a queue name, direct, hold, or print, on the GA-1120/GA-1130 printer. Enter a queue depending on how you want to print.

direct - print jobs are sent straight to the printer without spooling.

hold - print jobs are held until users operate copying or moving them to the Print queue with the job management tools.

print - print jobs are spooled to the hard disk in the GA-1120/GA-1130 printer and printed out. Use this queue for general printing.

- You can also enable the LPR Byte Counting by checking on “LPR Byte Counting Enabled”.



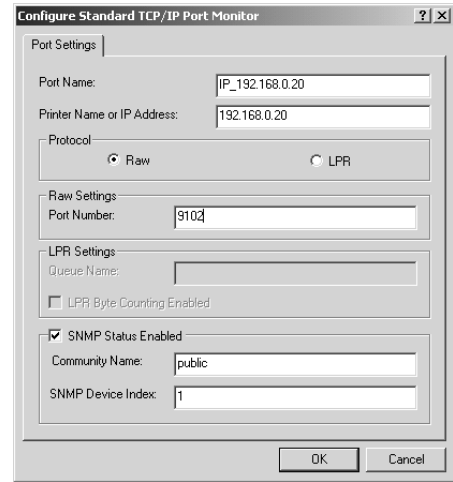
SUPPLEMENT:

If you have enabled the Port 9100 printing at the GA-1120/GA-1130 Control Panel, you can setting up Port 9100 printing as well. When you want to set up Port 9100 printing, select “Raw” at the “Protocol” option, and enter the port number in the “Port Number” field at the Raw Settings” option. The port number is different for each print connection as following:

9101 - use direct queue for printing.

9100 (default) or 9102 - use print queue for printing.

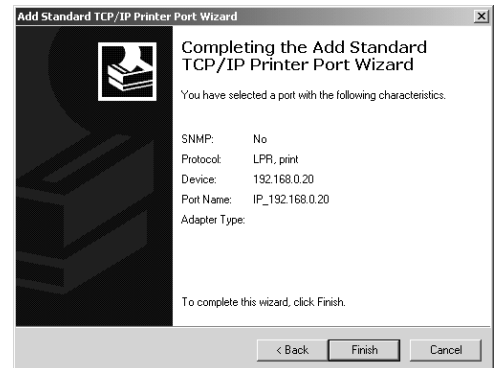
9103 - use hold queue for printing.



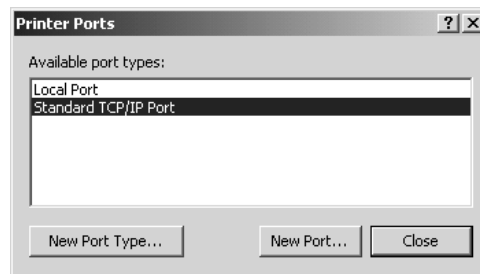
9 Click on [Next].



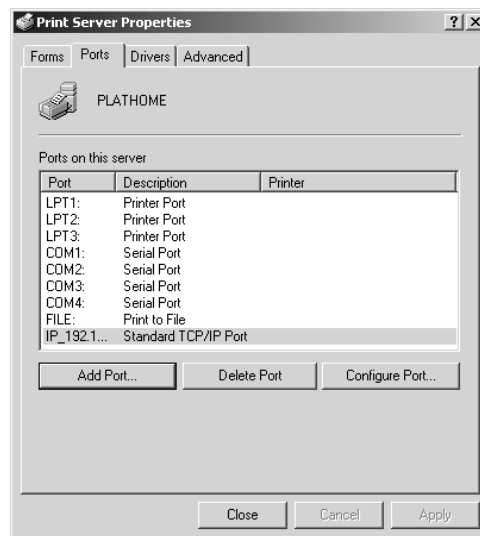
10 Click on [Finish].
• The screen returns to the Add Printer Wizard screen.



- 11** Click on [Close].
- The screen returns to the Print Server Properties screen.



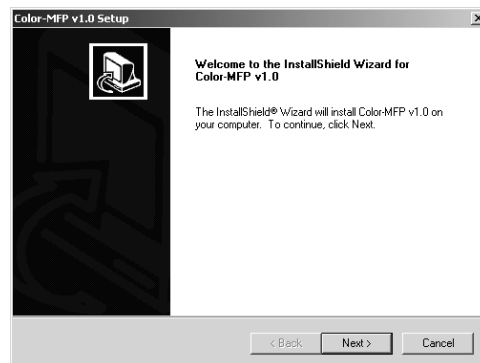
- 12** Click on [Close] to close the screen.
- The LPR Port is added in the “Ports on this server” list.



- 13** Insert the CD-ROM into the CD-ROM drive.
- The installer automatically starts and the Color-MFP v1.0 Setup screen appears.

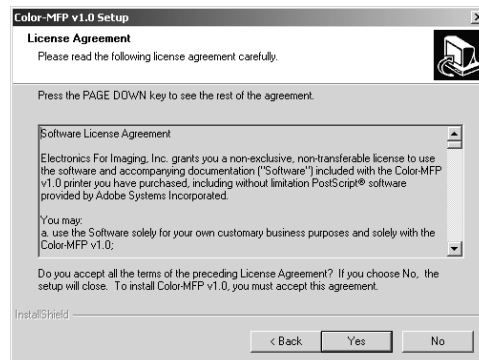
SUPPLEMENT:

When the installer does not automatically start, double-click on “Setup.exe” in the “Install” folder of the CD-ROM.

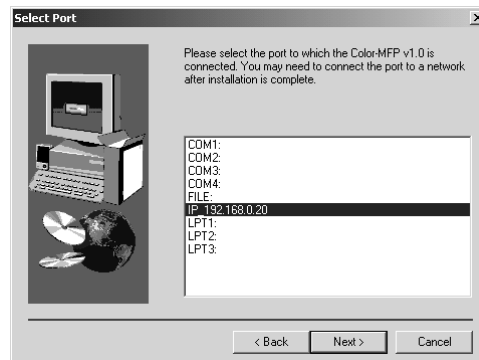


- 14** Click on [Next].
- The Software License Agreement screen appears.

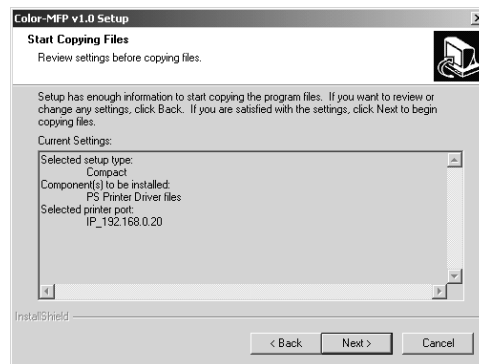
- 15** Click on [Yes].
- The Setup Type screen appears.



- 16** Select the port that you create and click on [Next].
- The Start Copying Files screen appears.



- 17** Click on [Next].
- Start copying files.

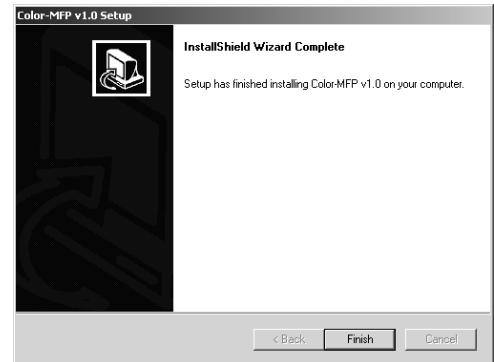


18 Click on [Finish].

19 The printer driver is installed.

Continue the operation to configure the option settings on the printer driver.

▶ P.47 “CONFIGURING THE OPTIONS”



Installing the Printer Driver for IPP Printing

PREPARATIONS:

Before installing the printer driver to use IPP printing, please make sure of the following:

- The GA-1120/GA-1130 printer is connected to the network and turned on.
- The TCP/IP setting is completed correctly.
- The TCP/IP protocol is installed and configured correctly on your Windows 2000/XP.

REQUIREMENTS:

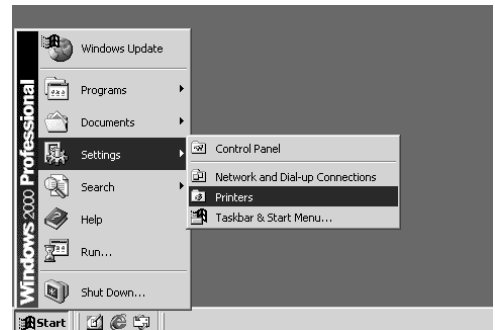
- The TCP/IP protocol is installed and configured correctly on your Windows 2000/XP.
- You must log into Windows as a user who has the “Administrators” or “Power Users” privilege.

IPP printing is available only for Windows 2000 and Windows XP. To install the printer driver to use IPP printing, install the printer driver by Add Printer Wizard.

The procedure here describes an installation on Windows 2000. The procedures are the same when Windows XP is used.

1 Click on [Start] and select [Printers] in [Settings] (Windows 2000) or select [Printers and Faxes] (Windows XP).

- The Printers folder is opened.



2 Double-click on the [Add Printer] icon (Windows 2000) or click on the “Add a Printer” hyperlink in the “Printer Tasks” (Windows XP).

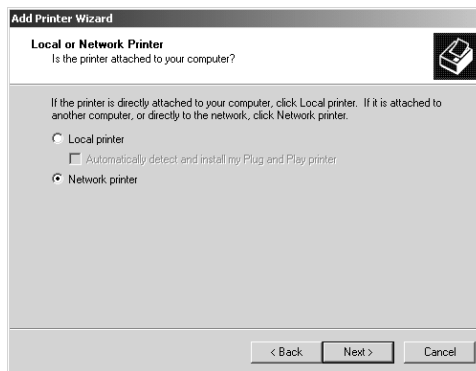
- The Add Printer Wizard screen appears.



3 Click on [Next].



4 Select “Network printer” and click on [Next].



5 Select “Connect to a printer on the Internet or on your intranet”, enter “http://[IP address]/ipp/[queue name]” in the “URL” field, and then click on [Next].

- Enter the IP address of GA-1120/GA-1130 printer instead of [IP address].
- Enter a queue name that you want to use instead of “[queue name]” depending on how you want to print.
 - direct** - print jobs are sent straight to the printer without spooling.
 - hold** - print jobs are held until users operate copying or moving them to the Print queue with the job management tools.
 - print** - print jobs are spooled to the hard disk in the GA-1120/GA-1130 printer and printed out. Use this queue for general printing.

Example: IP address = 192.168.0.20

Queue = print

http://192.168.255.48/ipp/print

- When you use the WINS server, enter the print server name of the GA-1120/GA-1130 printer instead of [IP address].

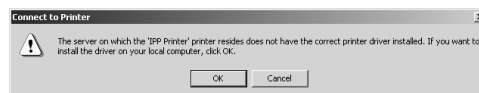
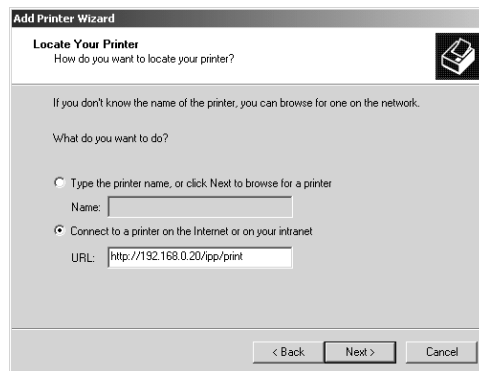
Example: Print Server Name = Server-907043

Queue = print

http://Server-907043/ipp/print

- The Connect to Printer screen appears.

6 Click on [OK].



- 7** Click on **[Have Disk...]**.
- The Install From Disk screen appears.

- 8** Insert the **User Software CD-ROM** into the **CD-ROM** drive.

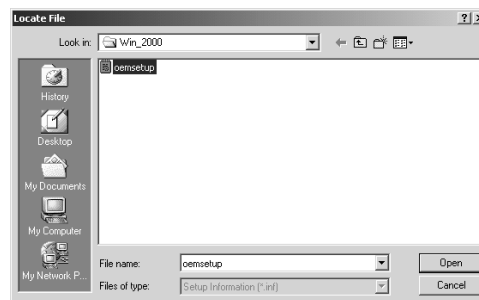
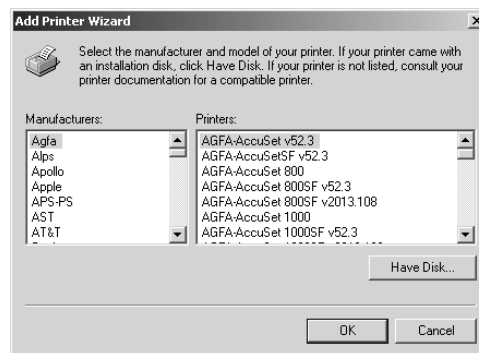
SUPPLEMENT:

The installer automatically starts and the Color-MFP v1.0 Setup screen appears after inserting the User Software CD-ROM. If this screen appears, click on **[Cancel]** to close the screen.

- 9** Click on **[Browse...]**.
- The Locate File screen appears.

- 10** Locate the directory where the printer driver for your operating system is located, select the **“oemsetup.inf”** file, and click on **[Open]**.
- When you are running on Windows 2000, locate the **“\English\Prntdrv\Ps_drvr\Win_2000”** folder in the User Software CD-ROM.
 - When you are running on Windows XP, locate the **“\English\Prntdrv\Ps_drvr\Win_XP”** folder in the User Software CD-ROM.
 - The screen returns to the Install From Disk screen.

- 11** Click on **[OK]**.

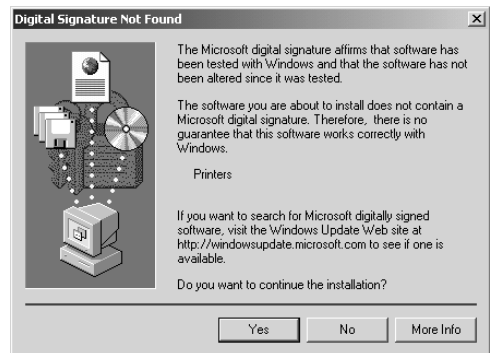


12 Select the printer driver that is compatible with GA-1120/GA-1130 printer and click on [Next].

- When the GA-1120/GA-1130 printer is a European version, and the default paper size type is A4 system, select “Color-MFPe v1.0” (for GA-1120) or “Color-MFP v1.0” (for GA-1130).
- When the GA-1120/GA-1130 printer is a US version, and the default paper size type is LT system, select “Color-MFPe US v1.0” (for GA-1120) or “Color-MFP US v1.0” (for GA-1130).
- The Digital Signature Not Found screen appears.



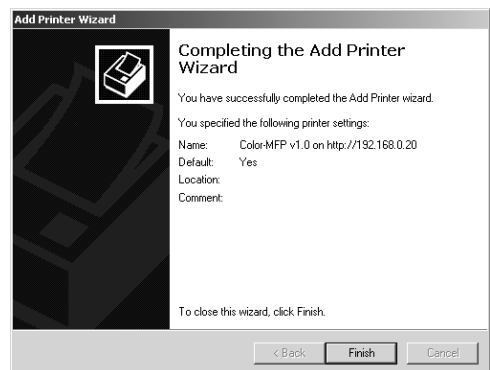
13 Click on [Yes].



14 Click on [Finish].

15 The printer driver is installed. Continue the operation to configure the option settings on the printer driver.

- ▶ P.47 “CONFIGURING THE OPTIONS”



Installing the Printer Driver for Novell Printing

PREPARATIONS:

Before installing the printer driver for Novell printing, please make sure of the following:

- The GA-1120/GA-1130 printer is connected to the network and turned on.
- The TCP/IP setting is completed correctly. (Required only when you want to use Fierly WebSetup or using the printer with NetWare server 5.x in the TCP/IP network.)
- The IPX/SPX and NetWare settings are completed correctly.

The procedure to Install the printer driver to use Novell printing is different depending on the version of the Windows.

► P.40 "Windows 95/98/Me"

► P.44 "Windows NT 4.0/2000/XP"

Windows 95/98/Me

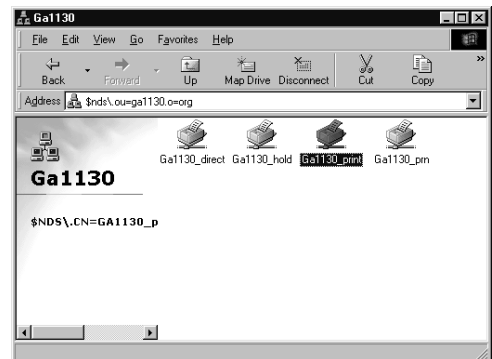
REQUIREMENTS:

- The NetWare server is configured correctly and running on your network.
- The TCP/IP protocol is installed and configured correctly on your Windows computer. (Required only when using the NetWare server 5.x in the TCP/IP network.)
- The Client for NetWare Networks and the IPX/SPX-compatible protocol are installed on your Windows computer. (Required only when using the NetWare server in the IPX/SPX network.)
- The Service for NetWare Directory Services is installed on your Windows computer. (Required only when using the NetWare server in NDS or NDPS mode.)
- You have an appropriate privilege to access to the NetWare server.

The procedure here describes an installation on Windows 98. The procedures are same when Windows 95 or Windows Me is used.

1 Open the NetWare server (when using in bindery mode) or NDS directory tree (when using in NDS or NDPS mode) in the Network Neighborhood with the Windows Explorer, and double-click on a queue.

- Select a queue depending on how you want to print.
 - [given name]_direct** - print jobs are sent straight to the printer without spooling.
 - [given name]_hold** - print jobs are held until users operate copying or moving them to the Print queue with the job management tools.
 - [given name]_print** - print jobs are spooled to the hard disk in the GA-1120/GA-1130 printer and printed out. Use this queue for general printing.
- When using the NetWare 5.x in NDPS mode and the printer drivers for each Operating System are installed to a NDPS broker, the printer driver is automatically installed.
- Unless using the NetWare 5.x in NDPS mode and printer drivers for each Operating System are installed to a NDPS broker, the Add Printer Wizard screen appears. Continue to the next step.



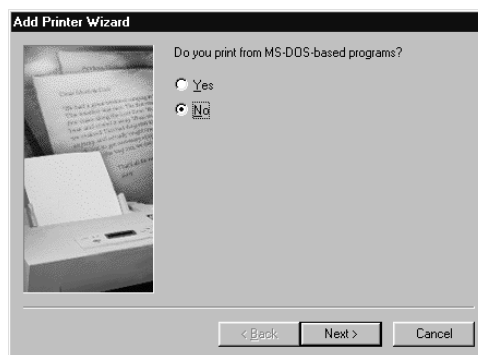
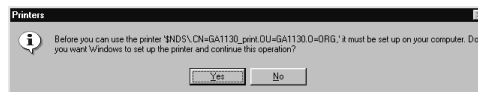
SUPPLEMENT:

The queue names created on the NetWare server should be either “[given name]_direct”, “[given name]_hold”, “[given name]_print” ([given name] can be any name). Those queues correspond to the GA-1120/GA-1130 printer’s queues, Direct, Hold, and Print.

2 Click on [Yes].

- The Add Printer Wizard screen appears.

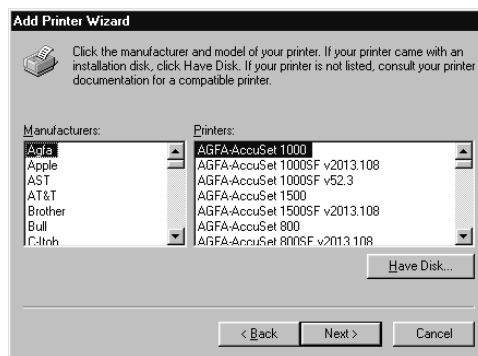
3 Select whether printing MS-DOS-based programs and click on [Next].



4 Click on [Have Disk...].

- The Install From Disk screen appears.

5 Insert the User Software CD-ROM into the CD-ROM drive.



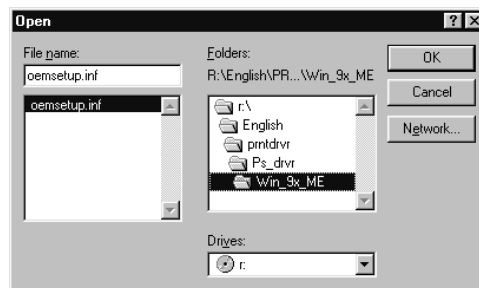
SUPPLEMENT:

The installer automatically starts and the Color-MFP v1.0 Setup screen appears after inserting the User Software CD-ROM. If this screen appears, click on [Cancel] to close the screen.

- 6** Click on [Browse...].
- The Open screen appears.



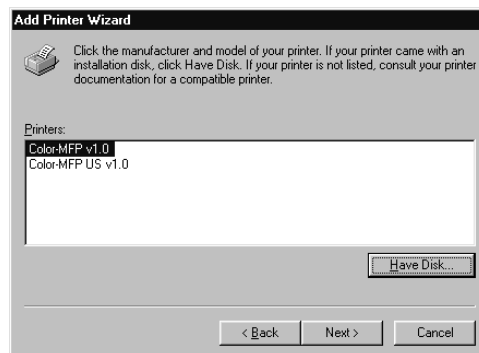
- 7** Locate “\English\Prntdrv\Ps_drvr\Win_9x_ME” folder in the User Software CD-ROM, select the “oemsetup.inf” file, and click on [Open].
- The screen returns to the Install From Disk screen.



- 8** Click on [OK].

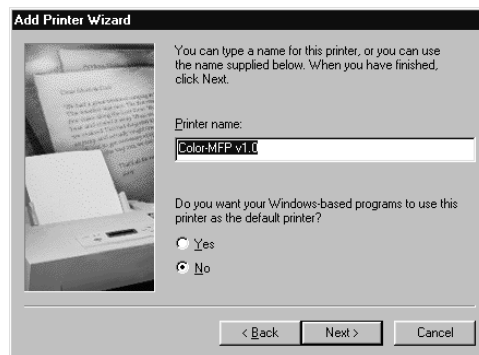


- 9** Select the printer driver that is compatible with GA-1120/GA-1130 printer and click on [Next].
- When the GA-1120/GA-1130 printer is a European version, and the default paper size type is A4 system, select “Color-MFPe v1.0” (for GA-1120) or “Color-MFP v1.0” (for GA-1130).
 - When the GA-1120/GA-1130 printer is a US version, and the default paper size type is LT system, select “Color-MFPe US v1.0” (for GA-1120) or “Color-MFP US v1.0” (for GA-1130).

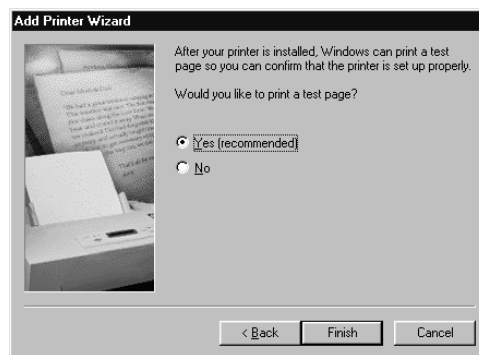


10 Change the name if desired, select whether using this printer as a default printer, and click on [Next].

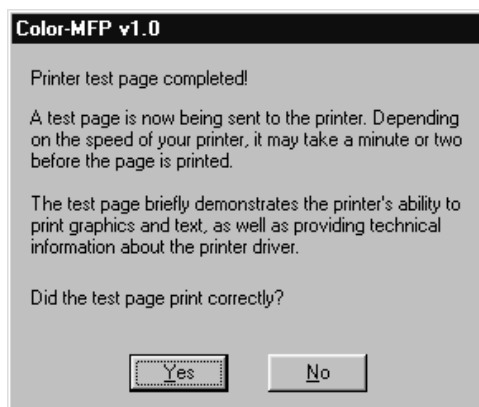
- When no printer is installed on your computer, the selection is not displayed on the screen and this printer is used as a default printer automatically.



11 Select “Yes” to print a test page and click on [Finish].



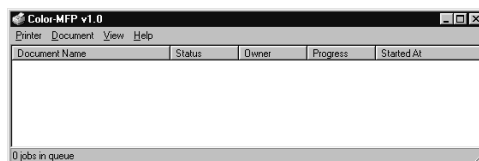
12 Make sure a test page is printed successfully and click on [Yes] to close the screen.



13 The printer driver is installed and the print queue screen appears.

Continue the operation to configure the option settings on the printer driver.

► P.47 “CONFIGURING THE OPTIONS”



Windows NT 4.0/2000/XP

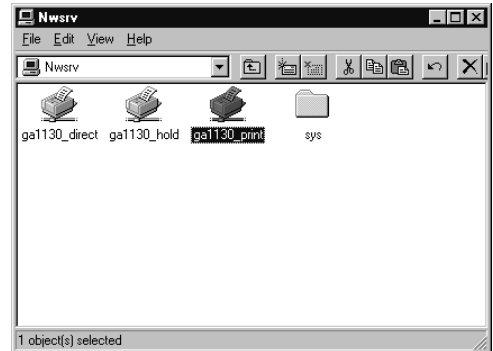
REQUIREMENTS:

- The NetWare server is configured correctly and running on your network.
- The TCP/IP protocol is installed and configured correctly on your Windows computer. (Required only when using the NetWare server 5.x in the TCP/IP network.)
- The NWLink IPX/SPX Compatible Transport protocol and NWLink NetBIOS protocol (for Windows NT 4.0) or NWLink IPX/SPX/NetBIOS Compatible Transport Protocol (for Windows 2000 and Windows XP) are installed on your Windows computer. (Required only when using the NetWare server in the IPX/SPX network.)
- The Gateway (and Client) Services for NetWare is installed on your Windows computer.
- You have an appropriate privilege to access to the NetWare server.

The procedure here describes an installation on Windows NT 4.0. The procedures are the same when Windows 2000 or Windows XP is used.

1 Open the NetWare server (when using in bindery mode) or NDS directory tree (when using in NDS or NDPS mode) in the Network Neighborhood with the Windows Explorer, and double-click on a queue.

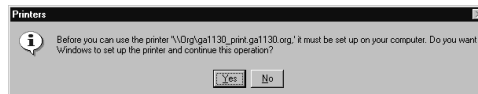
- Select a queue depending on how you want to print.
[given name]_direct - print jobs are sent straight to the printer without spooling.
[given name]_hold - print jobs are held until users operate copying or moving them to the Print queue with the job management tools.
[given name]_print - print jobs are spooled to the hard disk in the GA-1120/GA-1130 printer and printed out. Use this queue for general printing.
- When using the NetWare 5.x in NDPS mode and the printer drivers for each Operating System are installed to a NDPS broker, the printer driver is automatically installed.
- Unless using the NetWare 5.x in NDPS mode and printer drivers for each Operating System are installed to a NDPS broker, the Add Printer Wizard screen appears. Continue to the next step.



SUPPLEMENT:

The queue names created on the NetWare server should be either “[given name]_direct”, “[given name]_hold”, “[given name]_print” ([given name] can be any name). Those queues correspond to the GA-1120/GA-1130 printer’s queues, Direct, Hold, and Print.

2 Click on [Yes].



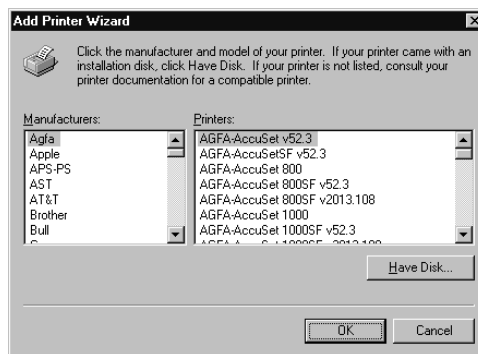
3 Click on [OK].

- The Add Printer Wizard screen appears.



4 Click on [Have Disk...].

- The Install From Disk screen appears.



5 Insert the User Software CD-ROM into the CD-ROM drive.

SUPPLEMENT:

The installer automatically starts and the Color-MFP v1.0 Setup screen appears after inserting the User Software CD-ROM. If this screen appears, click on [Cancel] to close the screen.

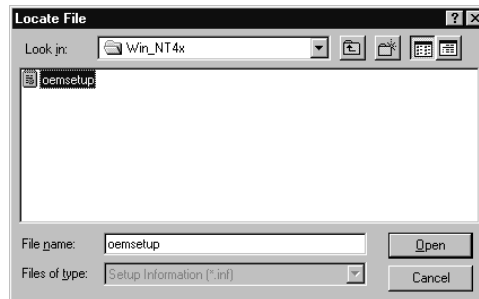
6 Click on [Browse...].

- When you are operating on Windows NT 4.0, the “A:\ is not accessible” message may appear. When the message is displayed, click on [Cancel] and continue the operation.
- The Locate File screen appears.



7 Locate the directory where the printer driver for Windows NT 4.0, Windows 2000, or Windows XP is located, select the “oemsetup.inf” file, and click on [Open].

- When you are running on Windows NT 4.0, locate the “\English\Prntdrv\Ps_drvr\Win_NT4x” folder in the User Software CD-ROM.
- When you are running on Windows 2000, locate the “\English\Prntdrv\Ps_drvr\Win_2000” folder in the User Software CD-ROM.
- When you are running on Windows XP, locate the “\English\Prntdrv\Ps_drvr\Win_XP” folder in the User Software CD-ROM.
- The screen returns to the Install From Disk screen.

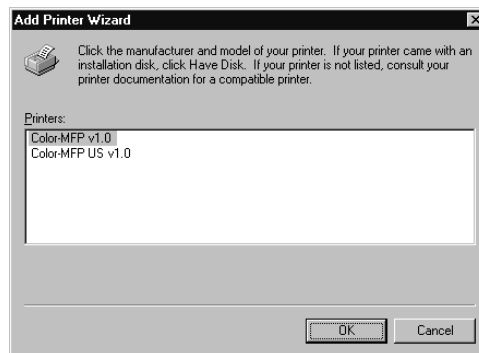


8 Click on [OK].



9 Select the printer driver that is compatible with GA-1120/GA-1130 printer and click on [Next].

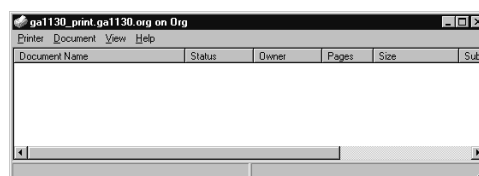
- When the GA-1120/GA-1130 printer is a European version, and the default paper size type is A4 system, select “Color-MFPe v1.0” (for GA-1120) or “Color-MFP v1.0” (for GA-1130).
- When the GA-1120/GA-1130 printer is a US version, and the default paper size type is LT system, select “Color-MFPe US v1.0” (for GA-1120) or “Color-MFP US v1.0” (for GA-1130).



10 The printer driver is installed and the print queue screen appears.

Continue the operation to configure the option settings on the printer driver.

► P.47 “CONFIGURING THE OPTIONS”



CONFIGURING THE OPTIONS

After you complete the installation of printer drivers, you should configure the option settings on the printer driver.

There are two methods to configure the options;

- When the GA-1120/GA-1130 printer and your computer is not connected in the TCP/IP network, you can configure the options manually.
 - ▶ P47 “Configuring the Options Manually”
- When the GA-1120/GA-1130 printer and your computer is connected in the TCP/IP network, you can configure the options automatically obtaining the settings using the Two-Way Communication.
 - ▶ P52 “Configuring the Options Automatically”

Configuring the Options Manually

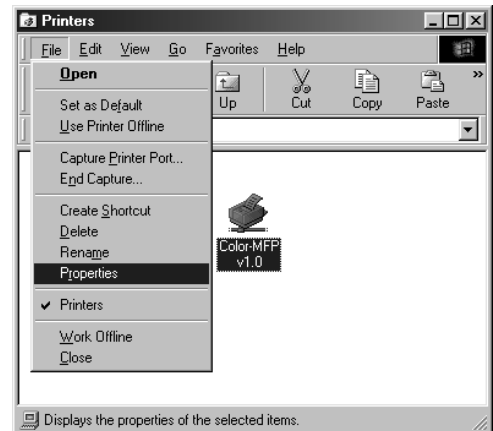
The procedure to configure the options manually is different depending on the version of the Windows.

- ▶ P47 “Windows 95/98/Me”
- ▶ P50 “Windows NT 4.0/2000/XP”

Windows 95/98/Me

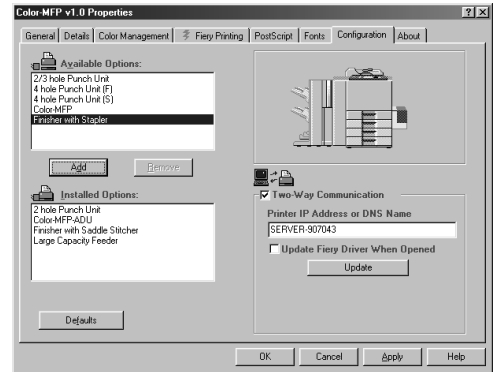
- 1 Select the printer driver in the Printers folder. Then click on [File] and select [Properties].**

- The printer driver properties screen appears.



2 Display the [Configuration] tab, select the option under “Available Options” and click on [Add].

- Added options are displayed in the “Installed Options” list. Repeat the operation to add all options installed on the machine.



2 hole Punch Unit

Add this when 2 Hole Punch Unit (MJ-6002E) is installed. This can be added only when “Finisher with Saddle Stitcher” or “Finisher with Stapler” has been already added into the “Installed Options” list.

2/3 hole Punch Unit

Add this when 2/3 Hole Punch Unit (MJ-6002N) is installed. This can be added only when “Finisher with Saddle Stitcher” or “Finisher with Stapler” has been already added into the “Installed Options” list.

4 hole Punch Unit (F)

Add this when 4 Hole Punch Unit (F) (MJ-6002F) is installed. This can be added only when “Finisher with Saddle Stitcher” or “Finisher with Stapler” has been already added into the “Installed Options” list.

4 hole Punch Unit (S)

Add this when 4 Hole Punch Unit (S) (MJ-6002S) is installed. This can be added only when “Finisher with Saddle Stitcher” or “Finisher with Stapler” has been already added into the “Installed Options” list.

Color-MFP-ADU

Add this when the Automatic Duplexing Unit (MD-5007) is installed.

Finisher with Saddle Stitcher

Add this when the Saddle Stitch Finisher (MJ-1020) is installed.

Finisher with Stapler

Add this when the Stapler Finisher (MJ-1019) is installed.

Large Capacity Feeder

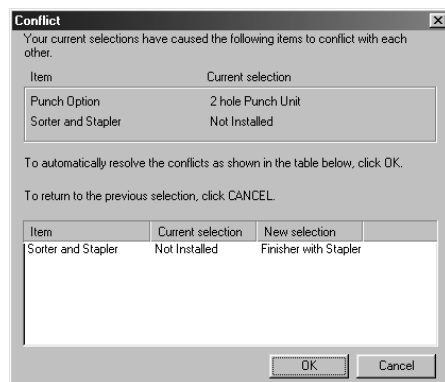
Add this when the Large Capacity Feeder (MP-1503LT or MP-1503A4) is installed.

NOTE:

To add a hole punch option to the “Installed Options” list, “Finisher with Stapler” or “Finisher with Saddle Stitcher” should be added before adding a hole punch option. When you add a hole punch option before adding a finisher option, the Conflict screen appears.

To automatically resolve the conflict as shown in the table on the screen, click on [OK].

To cancel the selection and return to the printer driver to re-configure the options, click on [Cancel].

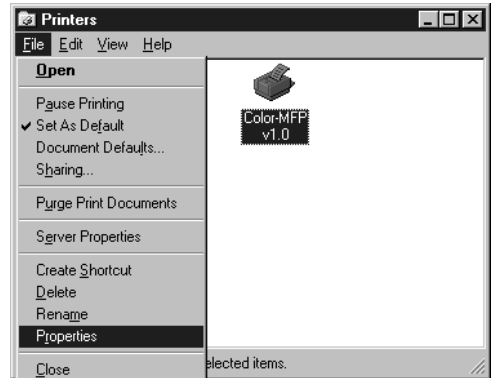


3 Click on [OK] to save settings.

Windows NT 4.0/2000/XP

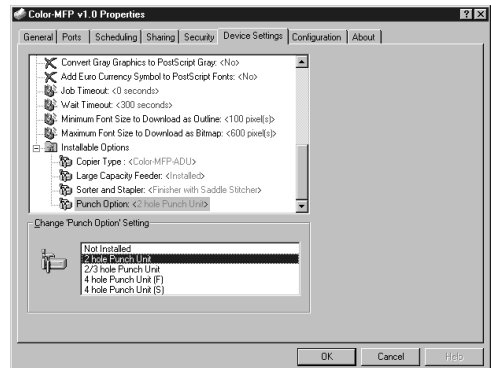
1 Select the printer driver in the Printers folder. Then click on [File] and select [Properties].

- When you are operating on Windows XP, open the Printers and Faxes folder to access to the printer driver.
- The printer driver properties screen appears.

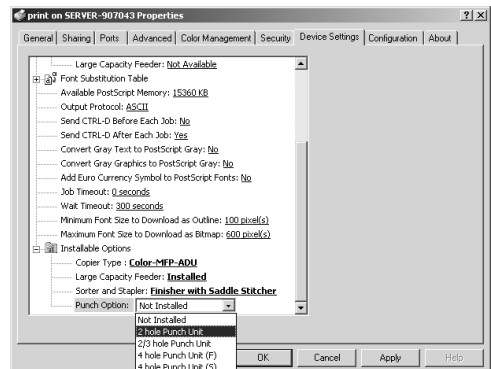


2 Display the [Device Settings] tab and set the options.

- When you are operating on Windows NT 4.0, select the option under “Installable Options”, and select the installed option from the list below to change the settings.



- When you are operating on Windows 2000 or Windows XP, select the option under “Installable Options”, and select the installed option from the drop-down list to change the settings.



Copier Type

This sets whether or not the Automatic Duplexing Unit is installed.

Color-MFP - Select this when the Automatic Duplexing Unit is not installed.

Color-MFP-ADU - Select this when the Automatic Duplexing Unit (MD-5007) is installed.

Large Capacity Feeder

This sets whether or not the Large Capacity Feeder is installed.

Not Installed - Select this when the Large Capacity Feeder is not installed.

Installed - Select this when the Large Capacity Feeder (MP-1503LT or MP-1503A4) is installed.

Sorter and Stapler

This sets whether or not the Finisher is installed.

Not Installed - Select this when the Finisher is not installed.

Finisher with Saddle Stitcher - Select this when the Finisher with Saddle Stitcher (MJ-1020) is installed.

Finisher with Stapler - Select this when the Finisher with Stapler (MJ-1019) is installed.

Punch Option

This sets whether or not the hole punch unit is installed. This can be selected when "Finisher with the Saddle Stitcher" or "Finisher with Stapler" is selected at "Sorter and Stapler".

Not Installed - Select this when no hole punch unit is installed.

2 hole Punch Unit - Select this when the 2 Hole Punch Unit (MJ-6002E) is installed.

2/3 hole Punch Unit - Select this when the 2/3 Hole Punch Unit (MJ-6002N) is installed.

4 hole Punch Unit (F) - Select this when the 4 Hole Punch Unit (F) (MJ-6002F) is installed.

4 hole Punch Unit (S) - Select this when the 4 Hole Punch Unit (S) (MJ-6002S) is installed.

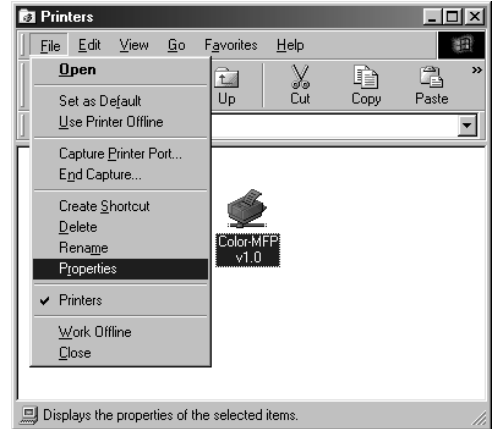
3 Click on [OK] to save settings.

Configuring the Options Automatically

When the GA-1120/GA-1130 printer and your computer is connected in the TCP/IP network, you can configure the options automatically obtaining the settings using Two-Way Communication.

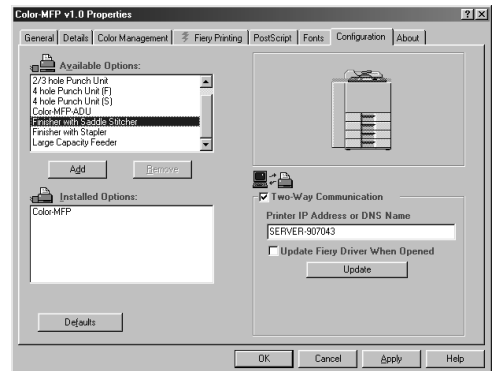
1 Select the printer driver in the Printers folder. Then click on [File] and select [Properties].

- When you are operating on Windows XP, open the Printers and Faxes folder to access to the printer driver.
- The printer driver properties screen appears.



2 Display the [Configuration] tab, check “Two-Way Communication” and enter the IP address or DNS Name in the “Printer IP Address or DNS Name” field. Then click on [Update].

- When you installed the printer driver for SMB printing, “Two-Way Communication” has been checked on and the DNS Name has entered in the “Printer IP Address or DNS Name” field.



- When you are operating on Windows NT 4.0, Windows 2000 or Windows XP, the Attention message is displayed after clicking on [Update]. In this case, click on [OK] to close the message and confirm the option settings are correctly configured on the [Device Settings] tab.



3 Click on [OK] to save settings.

INSTALLING THE PRINTER DRIVER (Macintosh)

ABOUT INSTALLATION

Before installing the printer driver to your computer, read this section to understand about the installation.

System Requirements

To install the printer drivers to a Macintosh computer, the following environments are required.

OS: Mac OS 8.6 to 9.2

Memory: 32MB or more

INSTALLING THE PRINTER DRIVER

Installing the Printer Driver to Macintosh

To install the printer driver to Macintosh, follow the procedure below:

- Installing the AdobePS 8.7.2 Printer Driver to your Macintosh computer.
 - ▶ P.55 “Installing the AdobePS 8.7.2 Printer Driver”
- Creating the PostScript printer for the GA-1120/GA-1130 printer on your Macintosh computer.
 - ▶ P.57 “Creating the AdobePS Printer”

Installing the AdobePS 8.7.2 Printer Driver

NOTE:

- If the AdobePS is already installed on your computer, please make sure the version of AdobePS is 8.7 or later. To check the version of AdobePS on your computer, select the AdobePS file located in the “Extensions” folder under the “System Folder”. Then click on [File], select [General Information] in [Get Info]. The information of the AdobePS file is displayed and you can check the version of the AdobePS file.

When the version of AdobePS is earlier than 8.7:

If the version of AdobePS is earlier than 8.7, follow the procedure here and install the AdobePS 8.7.2 printer driver from the User Software CD-ROM.

When the version of AdobePS is later than 8.7:

You have to install the printer description files for the GA-1120/GA-1130 although you do not have to install the AdobePS printer driver from the User Software CD-ROM. To install the printer description files to your Mac OS computer, simply copy the files located in the “English:Printer Driver:Printer Descriptions” folder in the User Software CD-ROM into the “System Folder:Extensions:Printer Descriptions” folder on your Mac OS hard drive.

- When a previous version of the PPD files for the GA-1120/GA-1130 are installed on your computer and the desktop printer for the GA-1120/GA-1130 has been created, please delete the desktop printer before installing the Adobe PS 8.7.2 printer driver and PPD files.

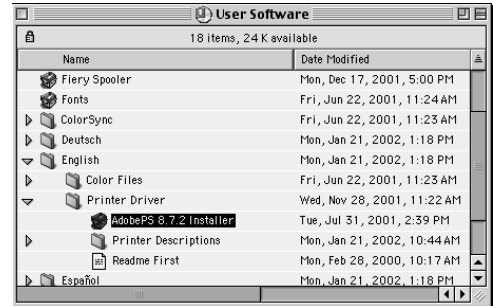
1 Insert the User Software CD-ROM into the CD-ROM drive.

- The User Software icon appears on the desktop.

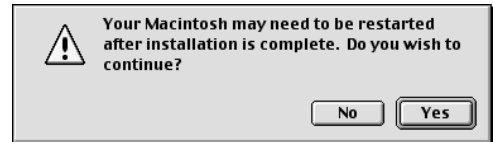


2 Open the “English” folder in the CD-ROM and double-click on “AdobePS 8.7.2 Installer” included in the “Printer Driver” folder.

- The AdobePS 8.7.2 installation begins.



3 Click on [Yes].



4 Click on [Replace].

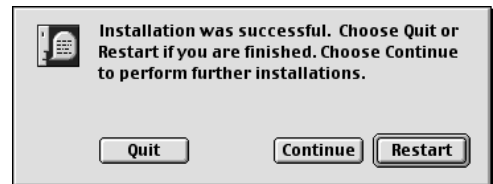
- When the old version of AdobePS is already installed on your computer, the message screen as shown at right is displayed. In this case, click on [Replace].



5 Click on [OK].



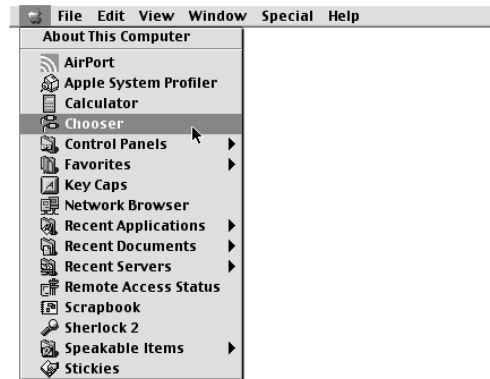
6 Click on [Restart].



Creating the AdobePS Printer

1 Click on apple menu and select [Chooser].

- The Chooser screen appears.



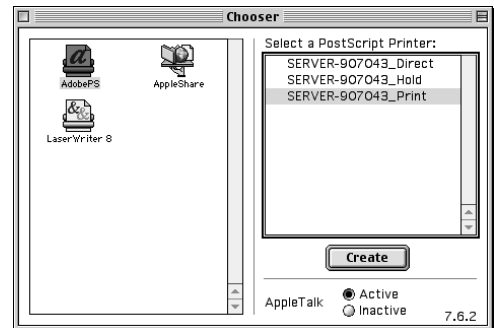
2 Select the AdobePS icon and a GA-1120/GA-1130 Printer displayed in the list, and click on [Create].

- Select a GA-1120/GA-1130 printer depending on how you operate the printing. ([Server Name] is a printer name of GA-1120/GA-1130.)

[Server Name]_Direct - print jobs are sent straight to the printer without spooling.

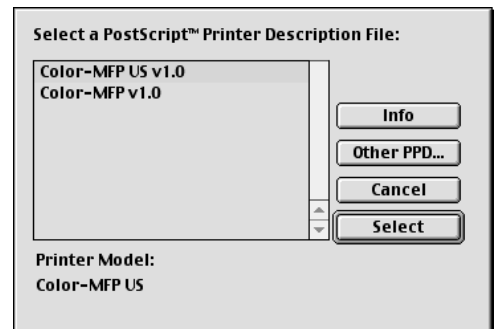
[Server Name]_Hold - print jobs are held until users operate copying or moving them to the Print queue with the job management tools.

[Server Name]_Print - print jobs are spooled to the hard disk in the GA-1120/GA-1130 printer and printed out. Use this queue for general printing.

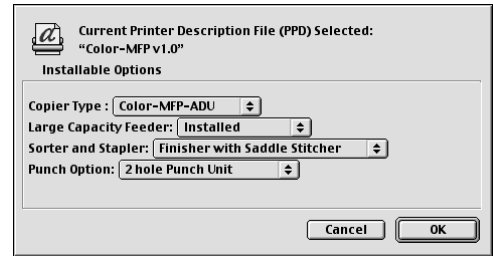


3 Select a PostScript Printer Description file to be used and click on [Select].

- When the GA-1120/GA-1130 printer is a US version, and the default paper size type is LT system, select "Color-MFPe US v1.0" (for GA-1120) or "Color-MFP US v1.0" (for GA-1130).
- When the GA-1120/GA-1130 printer is a European version, and the default paper size type is A4 system, select "Color-MFPe v1.0" (for GA-1120) or "Color-MFP v1.0" (for GA-1130).



4 Select each option according to the configuration of the GA-1120/GA-1130 printer and click on [OK].



Copier Type

This sets whether or not the Automatic Duplexing Unit is installed.

Color-MFP - Select this when the Automatic Duplexing Unit is not installed.

Color-MFP-ADU - Select this when the Automatic Duplexing Unit (MD-5007) is installed.

Large Capacity Feeder

This sets whether or not the Large Capacity Feeder is installed.

Not Installed - Select this when the Large Capacity Feeder is not installed.

Installed - Select this when the Large Capacity Feeder (MP-1503LT or MP-1503A4) is installed.

Sorter and Stapler

This sets whether or not the Finisher is installed.

Not Installed - Select this when the Finisher is not installed.

Finisher with Saddle Stitcher - Select this when the Finisher with Saddle Stitcher (MJ-1020) is installed.

Finisher with Stapler - Select this when the Finisher with Stapler (MJ-1019) is installed.

Punch Option

This sets whether or not the hole punch unit is installed. This can be selected when "Finisher with Saddle Stitcher" or "Finisher with Stapler" is selected at "Sorter and Stapler".

Not Installed - Select this when no hole punch unit is installed.

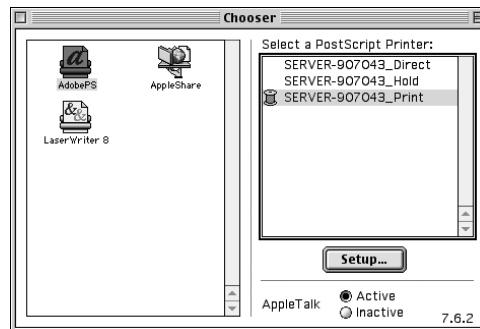
2 hole Punch Unit - Select this when the 2 Hole Punch Unit (MJ-6002E) is installed.

2/3 hole Punch Unit - Select this when the 2/3 Hole Punch Unit (MJ-6002N) is installed.

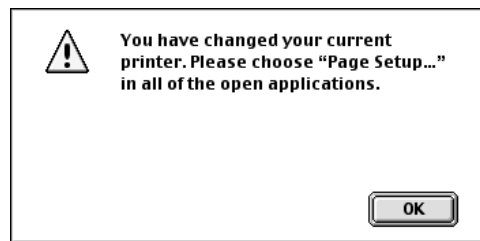
4 hole Punch Unit (F) - Select this when the 4 Hole Punch Unit (F) (MJ-6002F) is installed.

4 hole Punch Unit (S) - Select this when the 4 Hole Punch Unit (S) (MJ-6002S) is installed.

5 Close the screen.



- ## 6 Click on [OK].
- The current printer is set to the GA-1120/GA-1130 printer and the GA-1120/GA-1130 printer icon displayed on the desktop.



Appendix for Booklet Printing on Macintosh

You can print a booklet from a Macintosh computer using the booklet features supported by the AdobePS printer driver.

NOTE:

The following information does not always guarantee for that all applications can perform the booklet printing from a Macintosh computer.

Printing a Portrait Booklet

When you want to print a booklet from a portrait document, follow the procedure below.

1 Click on the [File] menu from an application, and select [Page Setup].

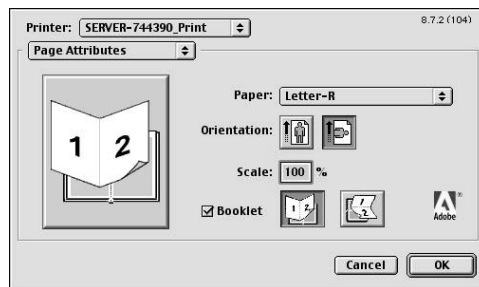
2 Select the “Landscape” icon at “Orientation”.

3 Check the “Booklet” checkbox and select the “Book” icon (left-side icon) for binding direction.

4 Enter the scale to appropriate value depending on the output paper size, and click on [OK].

• For Example;

Source paper size	: LT (LT-R for Saddle Stitch)
Output paper size	: LT
Scale	: 64(%)



SUPPLEMENT:

If you are printing from Microsoft Word, you should set the Microsoft Word options as well before clicking on [OK] to accept settings on the Page Setup dialog.

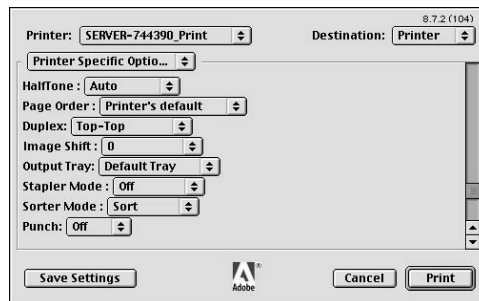
► P.62 “When Printing from Microsoft Word”

5 Click on the [File] menu from an application, and select [Print].

6 Select “Printer Specific Options” at the drop down box.

7 Select “Top-Top” at the “Duplex” drop down box and click on [Print].

- Printing a booklet with saddle stitch, you also need to set the “Output Tray” drop down box to “Saddle Tray”.



Printing a Landscape Booklet

When you want to print a booklet from a landscape document, follow the procedure below.

1 Click on the [File] menu from an application, and select [Page Setup].

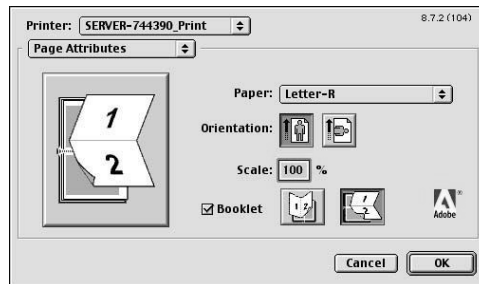
2 Select the “Portrait” icon at “Orientation”.

3 Check the “Booklet” checkbox and select the “Tablet” icon (right-side icon) for binding direction.

4 Enter the scale to appropriate value depending on the output paper size, and click on [OK].

- For Example;

Source paper size	: LT (LT-R for Saddle Stitch)
Output paper size	: LT
Scale	: 64(%)



SUPPLEMENT:

If you are printing from Microsoft Word, you should set the Microsoft Word options as well before clicking on [OK] to accept settings on the Page Setup dialog.

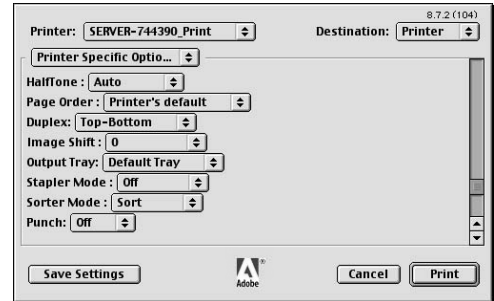
► P.62 “When Printing from Microsoft Word”

5 Click on the [File] menu from an application, and select [Print].

6 Select “Printer Specific Options” at the drop down box.

7 Select “Top-Bottom” at the “Duplex” drop down box and click on [Print].

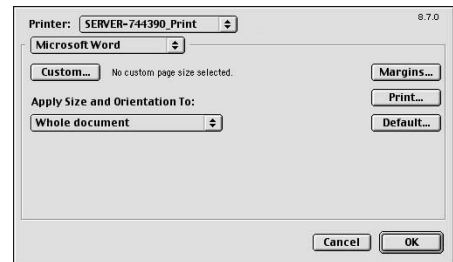
- Printing a booklet with saddle stitch, you also need to set the “Output Tray” drop down box to “Saddle Tray”.



When Printing from Microsoft Word:

If you are printing from Microsoft Word, follow the next 3 steps before clicking on [OK] to accept settings on the Page Setup dialog.

- 1.** Under Page Setup, change the drop down box from “Page Attributes” to “Microsoft Word”.
- 2.** Select “whole document” at the “Apply Size and Orientation To” drop down box.
- 3.** Click on [OK].



TOSHIBA TEC CORPORATION

1-1, KANDA NISHIKI-CHO, CHIYODA-KU, TOKYO, 101-8442, JAPAN

© Copyright TOSHIBA TEC CORPORATION 2002
ALL RIGHTS RESERVED

45027815

Download from www.Somanuals.com. All Manuals Search And Download.

Free Manuals Download Website

<http://myh66.com>

<http://usermanuals.us>

<http://www.somanuals.com>

<http://www.4manuals.cc>

<http://www.manual-lib.com>

<http://www.404manual.com>

<http://www.luxmanual.com>

<http://aubethermostatmanual.com>

Golf course search by state

<http://golfingnear.com>

Email search by domain

<http://emailbydomain.com>

Auto manuals search

<http://auto.somanuals.com>

TV manuals search

<http://tv.somanuals.com>