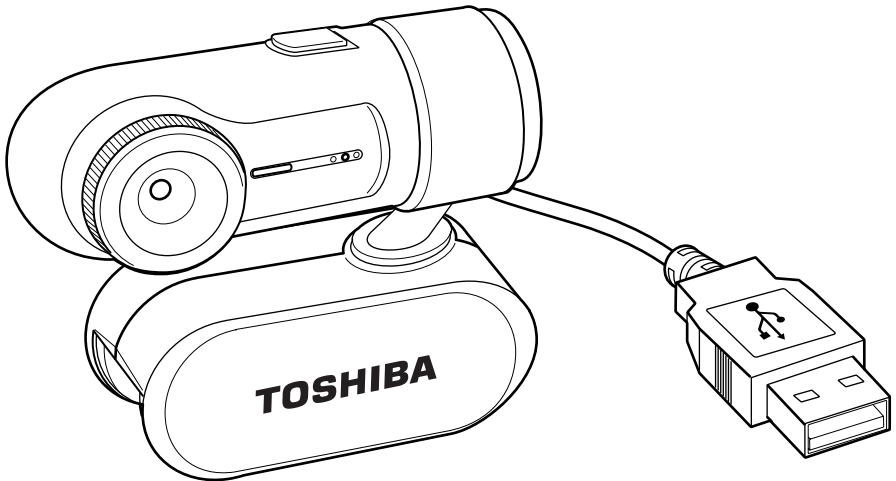


TOSHIBA



USB Webcam

User's Guide

Copyright

This manual is copyrighted by TOSHIBA Corporation with all rights reserved. Under the copyright laws, this manual cannot be reproduced in any form without the prior written permission of Toshiba. No patent liability is assumed, however, with respect to the use of the information contained herein.

© 2007 by TOSHIBA Corporation. All rights reserved.

Trademarks

Microsoft, Windows and Windows Vista are either registered trademarks or trademarks of Microsoft Corporation in the United States and/or other countries.

Intel is a trademark or registered trademark of Intel Corporation.

ArcSoft and the ArcSoft logo are registered trademarks of ArcSoft, Inc.

All other brand and product names are trademarks or registered trademarks of their respective companies.

Safety Information

This manual contains safety instructions that must be observed in order to avoid potential hazards that could result in personal injuries or damage to your equipment. These safety cautions have been classified according to the seriousness of the risk, and the icons highlight these instructions as follows:

▲ DANGER

Indicates an imminently hazardous situation which, if not avoided, will result in death or serious injury.

▲ WARNING

Indicates a potentially hazardous situation which, if not avoided, could result in death or serious injury.

▲ CAUTION

Indicates a potentially hazardous situation which, if not avoided, may result in minor or moderate injury.

CAUTION

Indicates a potentially hazardous situation which, if not avoided, may result in property damage.

NOTE

Provides important information.

Important Information

This manual contains important instructions for operating your product. Please read the manual, follow the instructions, and heed all warnings and cautions. Keep this manual where it can be used for future reference.

Precautions for Use

▲ WARNING

- *Do not attempt to disassemble, modify, tamper with or repair product. Disassembly, modification, tampering or repairing the product could cause fire or electric shock, possibly resulting in serious injury. Please contact an authorized Company service provider for any repair service.*
- *Never leave small parts such as covers, caps and screws within the reach of infants or small children. Swallowing a small part may cause choking and suffocation resulting in death or serious injury. If a part is swallowed, immediately take appropriate emergency action and consult a doctor.*
- *When handling the cable, follow these precautions:*
 - *Never tamper with the cable or connector.*
 - *Never splice a cable.*
 - *Never bend or twist a cable.*
 - *Never pull on a cable to remove a plug from an USB port. Always grasp the connector directly.*
 - *Never place heavy objects on a cable.*
 - *Never run a cable through a pinch point such as a door or window.*
 - *Never place a cable near a heat source.*
 - *Never use nails, staples or similar objects to fasten or attach cable in place.*

Doing any of the above may damage the cable and/or result in a fire or electric shock, possibly resulting in serious injury.
- *Always confirm that the connector has been fully inserted into the USB port. Failure to do so may result in a fire or electric shock, possibly resulting in serious injury.*
- *Never allow metal objects, such as screws, staples and paper clips, to enter the product. Foreign metal objects can create a short circuit, which can cause product damage and fire, possibly resulting in serious injury.*
- *Never use or place the product in a bathroom or any other damp environment or in an outdoor environment or location where it may be exposed to rain, mist, fog or other source of water or moisture. Such exposure could cause a fire or electric shock, possibly resulting in serious injury. It may also cause product failure.*

- *Do not drop the product or subject it to strong impact. The product may be damaged, or fire or electric shock may result, possibly resulting in serious injury.
Please contact an authorized Company service provider for any repair service.*
- *Never attempt to connect or disconnect a connector with wet hands. Failure to follow this instruction could result in an electric shock, possibly resulting in serious injury.*

Important Information on Use

CAUTION

- *Never place the product where it will be exposed to excess heat, such as in direct sunlight, an unventilated vehicle or near a heater. This may result in a system failure, malfunction, loss of data or damage to product.*
 - *Never place the product in a location where it will be exposed to extremely low temperatures. This may result in a system failure, malfunction or loss of data.*
 - *Do not expose the product to dusty environments. If dust gets inside the product, it could cause a system failure, malfunction or loss of data. If dust contaminates the product, do not turn on the power. Take it to an authorized Company service provider before you use it.*
 - *Never subject the product to sudden temperature variations. This may result in condensation, causing a system failure, malfunction or loss of data.*
 - *Never place a heavy object on the product and be careful not to drop a heavy object onto the product. It could damage the product or cause system failure.*
 - *Never use benzene, thinner or other chemicals when cleaning the product. The use of benzene, thinner or other chemicals may result in deterioration, deformation or discoloration of those items and the loss of data.*
- This device should be used under the following conditions:
Temperature 0-50°C, humidity 10-90%.

Power Management Tips

- If your computer should go into standby mode (Windows® XP and Windows® 2000) or Sleep mode (Windows Vista™), your USB Webcam will also enter standby mode. In this case, restart your computer from Standby mode (Windows® XP and Windows® 2000) or Sleep mode (Windows Vista™), and the USB Webcam will also be reactivated.

Introduction

Thank you for purchasing this Toshiba USB Webcam. This user's guide describes how to connect the USB Webcam to your computer, install software drivers and applications and how to operate the USB Webcam and applications. In addition to this user's guide, this package contains:

- Webcam
- Quick Guide
- Application CD (This disc contains the driver, Application software and User's Manual).

System requirements

To use the USB Webcam, your computer must meet the following hardware requirements and run one of the operating systems listed below.

Hardware

- Intel® Pentium4 processor 1.6GHz (or faster)
- A hard disk drive with at least 1GB of free space
- At least 512MB RAM or more, depending on your operating system
- USB 1.1/2.0
- Optical disc drive

Operating system

- Microsoft® Windows Vista™
- Microsoft® Windows XP
- Microsoft® Windows 2000

Features and functions

This section describes the various components of the USB Webcam. The following figure shows the USB Webcam's features.

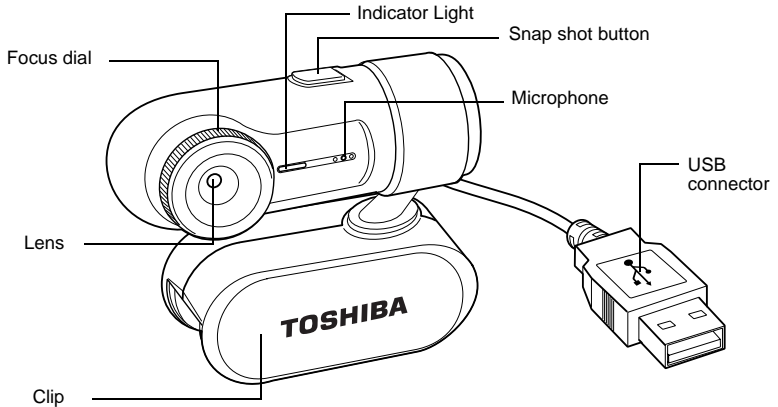


Figure 1-1 Features of the USB Webcam

Indicator Light	Blinks when in preview mode.
------------------------	------------------------------

NOTE

The Indicator will turn off when in sleep or hibernation modes.

Focus Dial	Adjusts the lens focus.
Clip	Attaches to the computer's display panel.
Lens	Captures the subject to be recorded.
Microphone	Records voices and sounds.
USB connector	Connects to the computer's USB port.
Snap shot Button	If pushed while the USB Webcam application is running, this will capture the image currently being displayed as a still image. If pressed when the USB Webcam application is not running, this will start the "AMCAP" image capture software.

Software Driver and Application Installation

The USB Webcam driver and ArcSoft® Videolmpression™ and PhotoImpression™ software are included on the Manual and Application CD-ROM. This section explains the installation procedures for these items and MSN® Messenger.

NOTE

The camera driver, ArcSoft Videolmpression and PhotoImpression software and MSN Messenger (or other instant messaging services) must be installed on the computer in order to use the USB Webcam.

Installing the software drivers and application program

NOTE

Do not connect the camera to your computer yet.

1. Insert the Manual and Application CD-ROM into the Optical disc drive.
2. The Start Menu appears.
3. To install the camera driver, click the "**Install Device Driver**".
4. Follow the information that appears on the screen until the installation is complete.
5. To install the application software, select "**Arcsoft Videolmpression**" and "**Arcsoft PhotoImpression**".
6. Click the Install Application Software. To click the Install Application Software button, be sure to choose the application software.
7. Follow the information that appears on the screen until the installation is complete.
8. Click on **Read User's Manual** to view the User's Manual.
9. Click **Exit** to close the software installation and restart your computer.

NOTE

*If the installer screen does not come up automatically, click **Start**, then **Run** and execute the file `launch.exe` on the CD-ROM to start the installer program.*

Installing the MSN Messenger

1. Please log on to <http://messenger.msn.com> to download.
After the installation package is downloaded to your computer, it will start installing MSN Messenger. All you have to do is follow the instructions.

NOTE

The download times of the file may vary according to your internet connection speed.

2. After the installation is complete, click **Start**, point to **All Programs**, and click **Windows Live Messenger**.
3. After you run Messenger for the first time, you can add friends to your list and send instant messages.

Hardware Installation

This section describes connecting the USB Webcam to the computer and how to adjust it.

Connecting

1. Open the USB Webcam clip and attach to the computer display panel or other surface by sandwiching it between the two sides of the clip.
2. Plug the USB connector into any USB port on your computer.

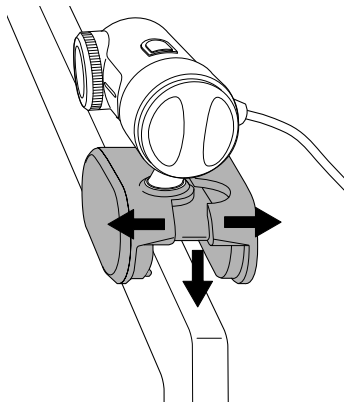


Figure 1-2 Attaching the USB Webcam

CAUTION

Be careful not to press directly on the computer display screen when attaching the USB Webcam clip. Failure to follow these instructions may result in damage to the computer display screen.

Adjusting USB Webcam Direction and Focus

1. Start the VideoImpression application and open the video viewing program.
2. Adjust the USB Webcam up and down and left and right so that it faces the subject to be recorded.
3. Adjust the USB Webcam focus by twisting the focus dial while looking at the view screen.

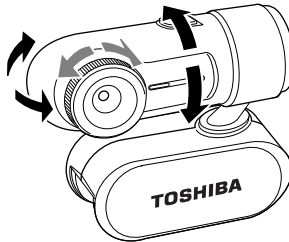




Figure 1-3 Adjusting the USB Webcam

Using software

The following sections describe how to use the software.

How To Start the USB Webcam

1. Plug the USB Webcam into your computer first.
2. Click the "Messenger"  to go to the main screen.
3. Click the **Webcam** icon  during a conversation.

-or-

Click the **Actions** menu on the main window, click **Start a Webcam Conversation**, select the name of the person you want to send video to, and then click **OK**.

For a 2-way webcam conversation, both participants must have a Web camera and each person must invite the other.

4. To stop sending your video image during a conversation, click the arrow under your video window, and then click **Pause Webcam** or **Stop Webcam**. You can continue to receive the other person's image, but your image will freeze in your contact's conversation window.

Getting Started With ArcSoft VideoImpression™

ArcSoft VideoImpression™ lets you create multimedia presentations for home, business, and even the Internet by combining photos and video clips with audio, text and scene transitions. It is an easy way to create and share home videos. You can even burn your videos onto a CD (requires a CD writer), ready for playback on most commercial DVD players. Powerful and feature-rich, yet extremely easy to use.

If you need more information or instructions on how to use a specific feature or tool, click the **[Help]** button on the upper corner of the screen.



When you first run the program, a window will appear that lets you choose the type of project you want to make (you can also open previously saved projects). Choose **"Create a New Video."** A new window will appear. It will contain multiple options for gathering your video content.



For this walk-through, choose "**Get From Album.**" Even if you choose one of the other options, you will end up at your albums sooner or later. Albums contain shortcuts to files stored on your system. You will grab most of your "**media**" for movie construction from your albums.

MEDIA

This first step is where you select the "**media**" (still images, videos, and sound clips) that you want to use to create your movie. All you need to do is choose the components you want and add them to the Storyboard. When you save - or "**produce**" - your movie, all the components on the Storyboard will be combined together into a single video file.

Sample Storyboard illustration:

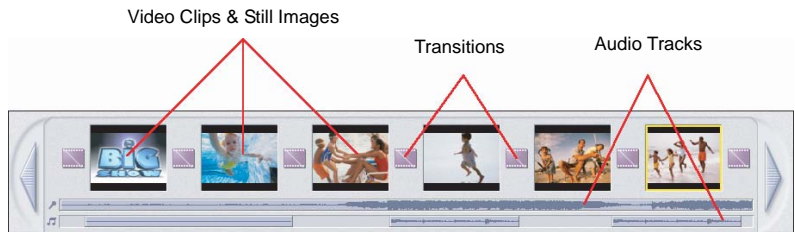


Figure 1-4 The Storyboard

The large squares are reserved for still images and video clips. The two horizontal bars beneath are reserved for audio tracks. The smaller squares between the still image/video clip components are for "**transitions.**"

EDIT

You're now ready to touch up and modify your movie components. Different editing options are available depending on the component type.

MODIFYING IMAGE AND VIDEO BRIGHTNESS/CONTRAST

1. Single-click the desired still image or video clip on the Storyboard.
2. Click and drag the sliders to adjust brightness and contrast. You can preview the effect within the Player.

TRIMMING VIDEOS AND AUDIO

1. Select the desired video or audio clip on the Storyboard.
2. Drag the Starting Mark to the spot where you would like the clip to begin playback.

3. Drag the Ending Mark to the spot where you would like the clip to end.



EFFECTS-TRANSITIONS

The third step in the creation process lets you add cool scene transitions between each still image or video component on the Storyboard.

Transitions are effects that occur as one movie component changes to another. You can add/delete transitions in the same way that you add/delete media components. Click the "**Randomize**" button to automatically add a random transition to each spot. You can go back to Step 2 to modify the display time for your transitions as well.



TEXT

This step lets you add text over any still image or video component on the Storyboard. Click on the component you want, then type in your text. You can modify all the standard parameters, such as font, size, style, alignment, and color.

You can also add a shadow. To do this, check the Shadow box. Click and drag within the preview to position the shadow behind the text. Use the sliders to adjust the shadow blur and intensity.

NARRATE

In addition to being able to add audio files to the Storyboard, you can also record audio directly within the program. To record audio:

1. Click the Audio Settings button and verify the audio configuration (in general, higher settings will yield higher audio quality but larger file sizes).
2. Click the red Record button.

3. Set the file name and save location for the recorded file. If you want, you can have the file automatically added to an album for easy access in another project.
4. Click the Start button and begin your narration. Press the Stop button to stop recording.
5. Click the Apply button to add the recorded audio to the Storyboard.



PRODUCE

The final step lets you save your movie in a variety of ways. Consult the Help file for details and more information. For this guide, we'll save a movie as a VCD. When you do this, you can pop the CD into most commercial DVD players to see your movie on your TV.

1. Click on the CD tab.
2. Select the device/drive to which the movie will be written or "**burned.**"
3. Choose the burn speed.
4. Choose the file type. (Remember, we're creating a VCD, so choose "**Video CD File.**")

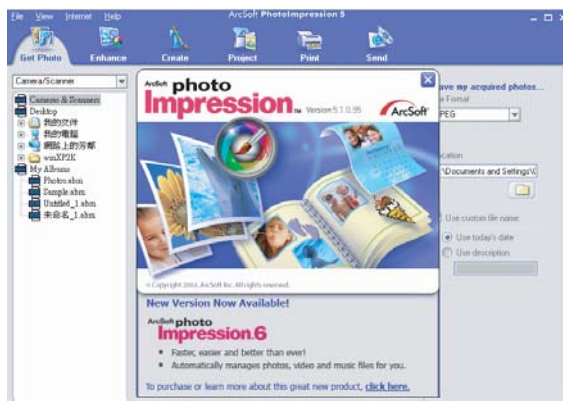
5. Click Start when you're ready.



Getting Started With PhotoImpression

ArcSoft PhotoImpression™ is the all-in-one solution that blends powerful photo editing with project templates and a slick, easy-to-use interface. You can easily find and enhance your photos, create special effects and projects, and print and share your photos with friends and family. Digital photography has never been so easy and fun.

The following is a brief introduction of PhotoImpression. If you need more information or instructions on how to use a specific feature or tool, click the **[Help]** button on the upper corner of the screen.



1. Connect your camera and your computer with the supplied USB cable.
2. Click **Start--> Select Programs--> PhotoImpression**

3. Photolmpression main Screen will appear on your desktop.



Viewing Camera Images through Photolmpression



1. To capture a video from the camera to the Photolmpression main screen .
2. Click the **[Camera/Scanner **] button.
3. Click the **[VGA USB Camera **] button.



PHOTO VIEW OPTIONS

When viewing a single photo, use the set of tools along the top of the screen to zoom in/out, skip to other photos stored in the same location, and rotate the current picture left or right.



ENHANCING PHOTOS

When you're ready to edit a photo, bring it up on the screen and then proceed to the Enhance module. From there, you can perform various types of modifications.

Specifications

Dimensions (main body of webcam)

Size

Width: 64 millimeters (2.5 inches)

Height: 50 millimeters (2 inches)

Depth: 25 millimeters (1 inches)

Weight

52 grams (1.8 ounces)

Connection to the computer

USB 1.1/2.0

Hardware Specifications

Main Features

Feature	Specifications
Image Sensor	Color VGA CMOS
Display	1 Status LED
Color Depth	24 Bit True Color
Video Resolution	■ 640x480 (VGA) - up to 30fps@VGA ■ 800 x 600 (Interpolated)
Stills Resolution	Up to 1280x960
Exposure	Auto
White Balance	Auto & manual
Power source	USB bus powered when connected to PC
PC connection	USB 1.1 (Full speed)

Navigation Controls

Control	Specifications
Snapshot button	■ Single frame still image capture ■ Quick launch application software

Free Manuals Download Website

<http://myh66.com>

<http://usermanuals.us>

<http://www.somanuals.com>

<http://www.4manuals.cc>

<http://www.manual-lib.com>

<http://www.404manual.com>

<http://www.luxmanual.com>

<http://aubethermostatmanual.com>

Golf course search by state

<http://golfingnear.com>

Email search by domain

<http://emailbydomain.com>

Auto manuals search

<http://auto.somanuals.com>

TV manuals search

<http://tv.somanuals.com>