

UNINTERRUPTIBLE POWER SYSTEMS



Remote-D

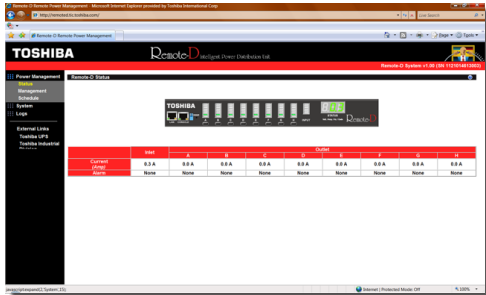
Intelligent Power Distribution Unit

- Protection of Electronic Equipment from Random Surges & High Amplitude Spikes
- Comprehensive Power Management via RS232 & Ethernet with Browser or SNMP
- Remote Management Individual Output Power Receptacles
- Programmable Turn On/Off Based on Specific Events
- Event Notification through SNMP Trap & Email Alerts
- Detailed Data-Logging For Statistic Analysis & Diagnostics
- Double-Layer Security for Administrators & Users
- Optional Connectivity of Versatile Sensors via Environmental Monitoring Device

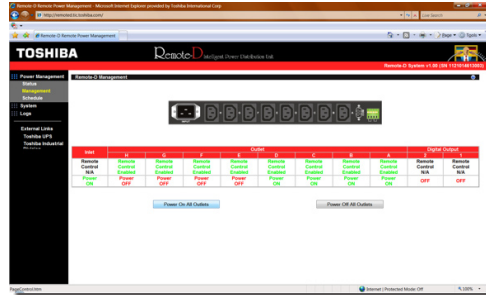
Reliability *in motion*[®]

Remote-D Intelligent Power Distribution Unit

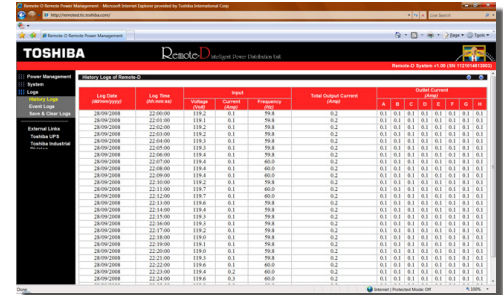
MODEL		Remote-D: 120 V	Remote-D: 230 V
INPUT	Voltage	120 V	230 V
	Voltage Range	100 to 125 V	200 to 250 V
	Load Capacity	15 A	20 A
	Frequency	50/60 Hz Auto-Sensing	
	Input Line Cord (6 ft.)	NEMA 5-15P	IEC C14
OUTPUT	Voltage	120 V	230 V
	Frequency	50/60 Hz Auto-Sensing	
	Rated Current	15 A	10 A
	Output Receptacles	Eight NEMA 5-15R	Eight IEC C13
	COMMUNICATION	Network Protocol	SNMP Over UDP/IP, HTTP Over TCP/IP
Network Security		SNMPv3, SSL, SSH & User Secure Password Protection	
PHYSICAL	Indication	Input/Output Power Status Indicators	
	Network Port	10/100 Base-T RJ-45 Network Connectivity	
	Digital Contacts	Two Set Event-Controlled Contacts	
	Dimensions (W x D x H)	17.2 x 10.6 x 1.73 in. (436 mm x 270 mm x 44 mm)	
	Weight	8.4 lb (3.8 kg)	
OPTION	Environmental Monitoring Device	Part #: RMTI-EMD-HT	
ENVIRONMENT	Operating Ambient Temperature	32° to 104°F (0° to 40°C)	
	Recommended Temperature	59° to 77°F (15° to 25°C)	
	Humidity	10 to 80% Non-Condensed	
CONFORMANCE	Regulatory Approvals	FCC Class A, UL, CUL, CE	
WARRANTY		One Year	



Remote-D Status Screen



Remote-D Management Screen



Remote-D Log History Screen

Visit <http://RemoteD.tic.toshiba.com> to view a live demo of the Remote-D interface.



Remote-D 230 V (Rear)



Remote-D 120 V (Rear)

UPS ADJUSTABLE SPEED DRIVES MOTORS CONTROLS INSTRUMENTATION PLC

TOSHIBA

TOSHIBA INTERNATIONAL CORPORATION

INDUSTRIAL DIVISION

13131 West Little York Road, Houston, Texas 77041

Tel (713)466-0277 Fax (713)466-8773

US (800)231-1412 Canada (800)872-2192 Mexico 01(800)527-1204

www.toshiba.com/ind

Copyright 1/2009

Available Through:



Free Manuals Download Website

<http://myh66.com>

<http://usermanuals.us>

<http://www.somanuals.com>

<http://www.4manuals.cc>

<http://www.manual-lib.com>

<http://www.404manual.com>

<http://www.luxmanual.com>

<http://aubethermostatmanual.com>

Golf course search by state

<http://golfingnear.com>

Email search by domain

<http://emailbydomain.com>

Auto manuals search

<http://auto.somanuals.com>

TV manuals search

<http://tv.somanuals.com>