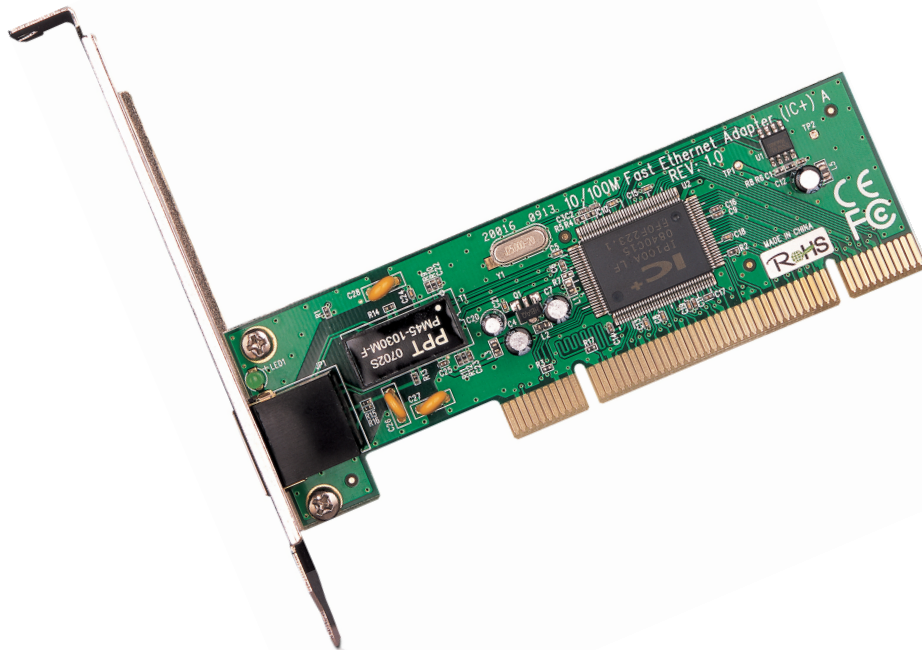


# TP-LINK®

## User Guide

### TF-3200

### 10/100Mbps PCI Network Adapter



Rev: 1.0.0  
1910010552

## COPYRIGHT & TRADEMARKS

Specifications are subject to change without notice. **TP-LINK**<sup>®</sup> is a registered trademark of TP-LINK TECHNOLOGIES CO., LTD. Other brands and product names are trademarks or registered trademarks of their respective holders.

No part of the specifications may be reproduced in any form or by any means or used to make any derivative such as translation, transformation, or adaptation without permission from TP-LINK TECHNOLOGIES CO., LTD. Copyright © 2012 TP-LINK TECHNOLOGIES CO., LTD. All rights reserved.

<http://www.tp-link.com>

## FCC STATEMENT



This equipment has been tested and found to comply with the limits for a Class B digital device, pursuant to part 15 of the FCC Rules. These limits are designed to provide reasonable protection against harmful interference in a residential installation. This equipment generates, uses and can radiate radio frequency energy and, if not installed and used in accordance with the instructions, may cause harmful interference to radio communications. However, there is no guarantee that interference will not occur in a particular installation. If this equipment does cause harmful interference to radio or television reception, which can be determined by turning the equipment off and on, the user is encouraged to try to correct the interference by one or more of the following measures:

- Reorient or relocate the receiving antenna.
- Increase the separation between the equipment and receiver.
- Connect the equipment into an outlet on a circuit different from that to which the receiver is connected.
- Consult the dealer or an experienced radio/ TV technician for help.

This device complies with part 15 of the FCC Rules. Operation is subject to the following two conditions:

- 1) This device may not cause harmful interference.
- 2) This device must accept any interference received, including interference that may cause undesired operation.

Any changes or modifications not Expressly approved by the party responsible for compliance could void the user's authority to operate the equipment.

## CE Mark Warning



This is a class B product. In a domestic environment, this product may cause radio interference, in which case the user may be required to take adequate measures.

## DECLARATION OF CONFORMITY

For the following equipment:

Product Description: **10/100Mbps PCI Network Adapter**

Model No.: **TF-3200**

Trademark: **TP-LINK**

We declare under our own responsibility that the above products satisfy all the technical regulations applicable to the product within the scope of Council Directives:

**Directives 2004 / 108 / EC, Directives 2006 / 95 / EC**

The above product is in conformity with the following standards or other normative documents

**EN 55022:2006+A1:2007**

**EN 55024:1998+A1:2001+A2:2003**

**EN 61000-3-2:2006+A1:2009+A2:2009**

**EN 61000-3-3:2008**

**EN 60950-1:2006+A11:2009+A1:2010**

*The product carries the CE Mark*



Person is responsible for marking this declaration:

A handwritten signature in black ink, appearing to read 'Yang Hongliang', is written over a light gray rectangular background.

**Yang Hongliang**

**Product Manager of International Business**

Date of Issue: 2012

TP-LINK TECHNOLOGIES CO., LTD.

Building 24 (floors 1, 3, 4, 5), and 28 (floors 1-4) Central Science and Technology Park,  
Shennan Rd, Nanshan, Shenzhen, China

# CONTENTS

<b>Package Contents .....</b>	<b>1</b>
<b>Chapter 1. Introduction .....</b>	<b>2</b>
1.1 Overview of the product.....	2
1.2 Features .....	2
1.3 LED Status .....	2
<b>Chapter 2. Installation Guide .....</b>	<b>3</b>
2.1 Hardware Installation.....	3
2.2 Software Installation .....	4
2.2.1 For Windows XP.....	4
2.2.2 For Windows 7 .....	11
2.2.3 For Windows Vista .....	17
<b>Appendix A: Specifications.....</b>	<b>25</b>
<b>Appendix B: Troubleshooting.....</b>	<b>26</b>

## Package Contents

The following contents should be found in your box:

- One TF-3200 10/100Mbps PCI Network Adapter
- Quick Installation Guide
- One Resource CD for TF-3200, including:
  - Drivers
  - User Guide
  - Other Helpful Information

 **Note:**

Make sure that the package contains the above items. If any of the listed items is damaged or missing, please contact your distributor.

## Conventions

The “Adapter” mentioned in this user guide stands for TF-3200 10/100Mbps PCI Network Adapter without any explanations.

# Chapter 1. Introduction

## 1.1 Overview of the product

The TF-3200 10/100M PCI Network Adapter is a highly integrated and cost-effective Fast Ethernet Adapter that provides 32-bit performance, PCI bus controller, and full compliance with IEEE 802.3 10Base-T, IEEE 802.3u 100Base-TX specifications and IEEE 802.3x Full Duplex Flow.

The TF-3200 keeps low cost and eliminates usage barriers. It is the easiest way to upgrade a network from 10 to 100Mbps. Supports both 10Mbps and 100Mbps network speed both in Half-Duplex and Full-Duplex transfer modes, using Auto-Negotiation technology to detect the network speed. It also can be widely used in most modern Operating System.

## 1.2 Features

- Comply with IEEE 802.3 10Base-T and IEEE 802.3u 100Base-TX Ethernet standard
- Compliant to PCI Revision 2.1/2.2
- PCI local bus single-chip Ethernet controller
- Supports auto MDI-MDIX Function
- Supports ACPI, PCI power management
- Supports Full Duplex Flow Control (IEEE 802.3x)
- Full duplex design to double the performance
- Supports Auto-Negotiation function
- Supports drivers for Linux, Windows 7 (32bit / 64 bit), Windows Vista (32bit / 64 bit), Windows 2000, Windows 2003 and Windows XP

## 1.3 LED Status

The green LED indicates if the 10 or 100Mbps STP/UTP has been link or not. When the LED radiate, it indicates the adapter connect to the network at 10/100Mbps speed. Otherwise, it indicates connection is not available. When the LED glitters, it means the STP/UTP port is receiving or transmitting data.

## Chapter 2. Installation Guide

### 2.1 Hardware Installation

To install the adapter, please follow these steps listed below:

1. Turn off your computer and unplug the power cord and all cables.
2. Remove your computer's case cover.
3. Locate an available PCI slot.
4. Remove the screw that secures the back plate (the small piece of metal that covers the opening for PCI card on the back panel of your computer), then remove the back plate.
5. Carefully insert the adapter into the PCI slot. Do not touch the metal connector on the adapter.
6. Secure the adapter to the case using the screw you removed from the back plate.
7. Reinstall your computer's case cover.
8. Plug in the power cord and other cables, and then turn on your computer.

 **Note:**

When the hardware has been successfully installed on your computer, you will be prompted '**Found New Hardware Wizard**' (as shown in Figure 2-1 and Figure 2-2); please click **Cancel**, and then follow the **Software Installation** steps to install driver for your adapter.



Figure 2-1 Found New Hardware Wizard in Windows XP



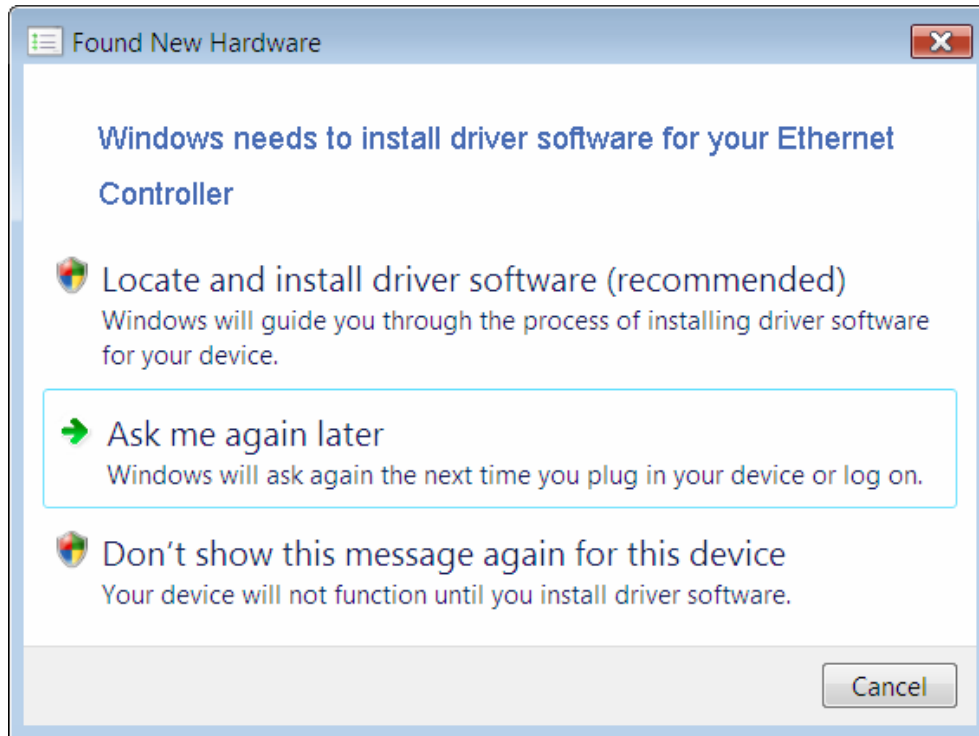


Figure 2-2 Found New Hardware Wizard in Windows Vista

## 2.2 Software Installation

This section will guide you through the installation procedures for Windows XP, Windows 7, and Windows Vista. Please carefully follow the steps.

### 2.2.1 For Windows XP

1. Insert the TP-LINK Resource CD into the CD-ROM drive.
2. Right-click the icon **My Computer** on the desktop, and then click **Manage**.

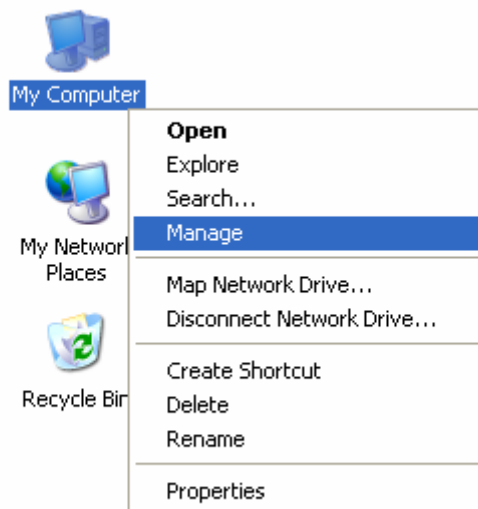


Figure 2-3

- The **Computer Management** screen will appear as shown in Figure 2-4. Click **Device Manager**, and then you will see the various options on the right. Click **Other devices**, and then from the drop-down list please find **Ethernet Controller**. Right-click it, and then select **Update Driver....**

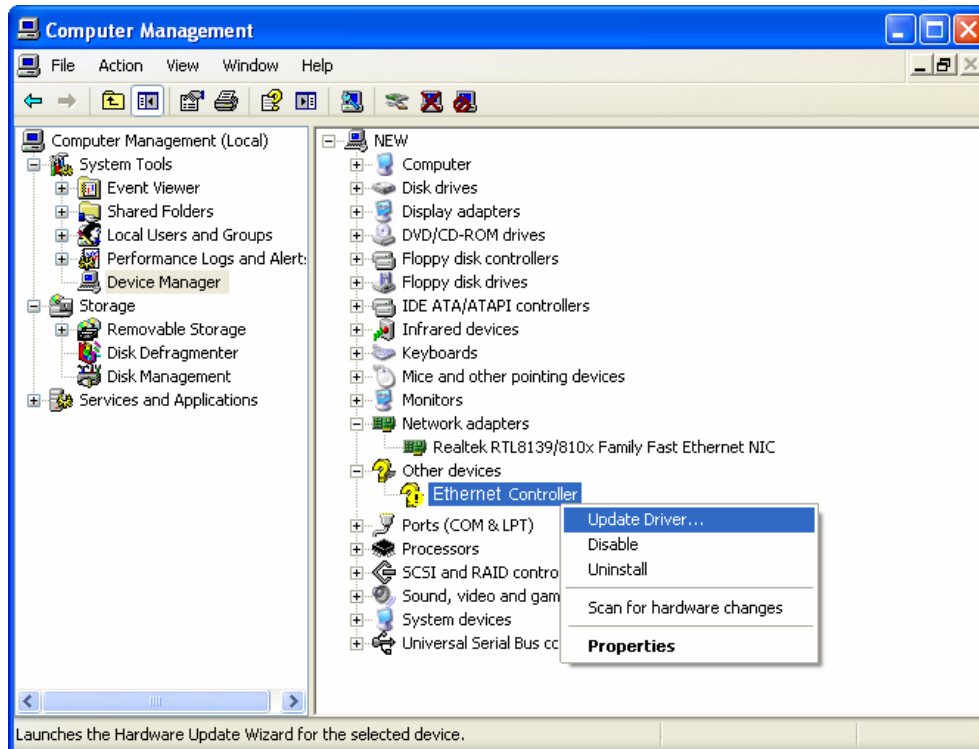


Figure 2-4

- The **Hardware Update Wizard** window will show up as shown in Figure 2-5. Select **Install from a list or specific location [Advanced]**, and then click **Next**.

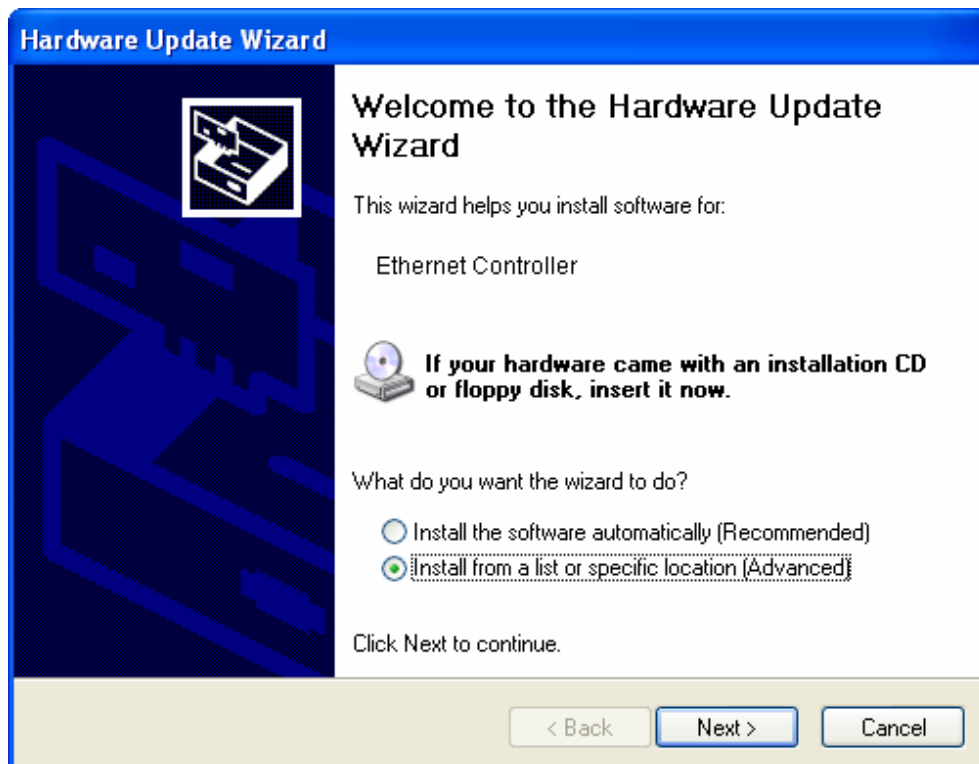


Figure 2-5

5. Select **Don't search. I will choose the driver to install**, and then click **Next**.

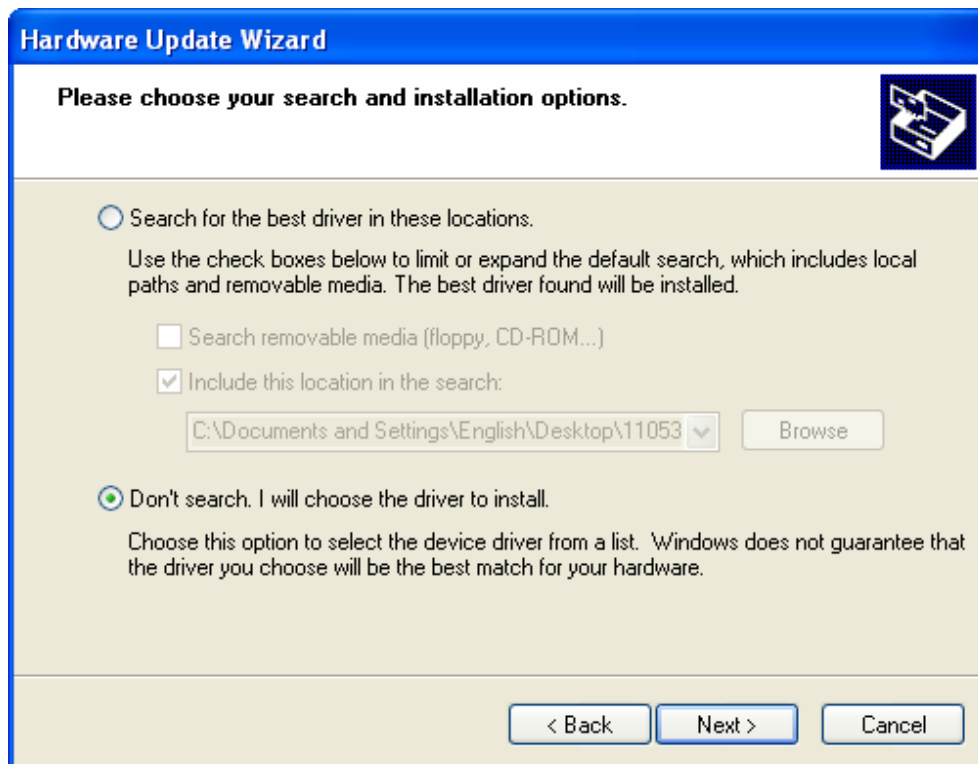


Figure 2-6

6. Select **Network adapters**, and then click **Next**.

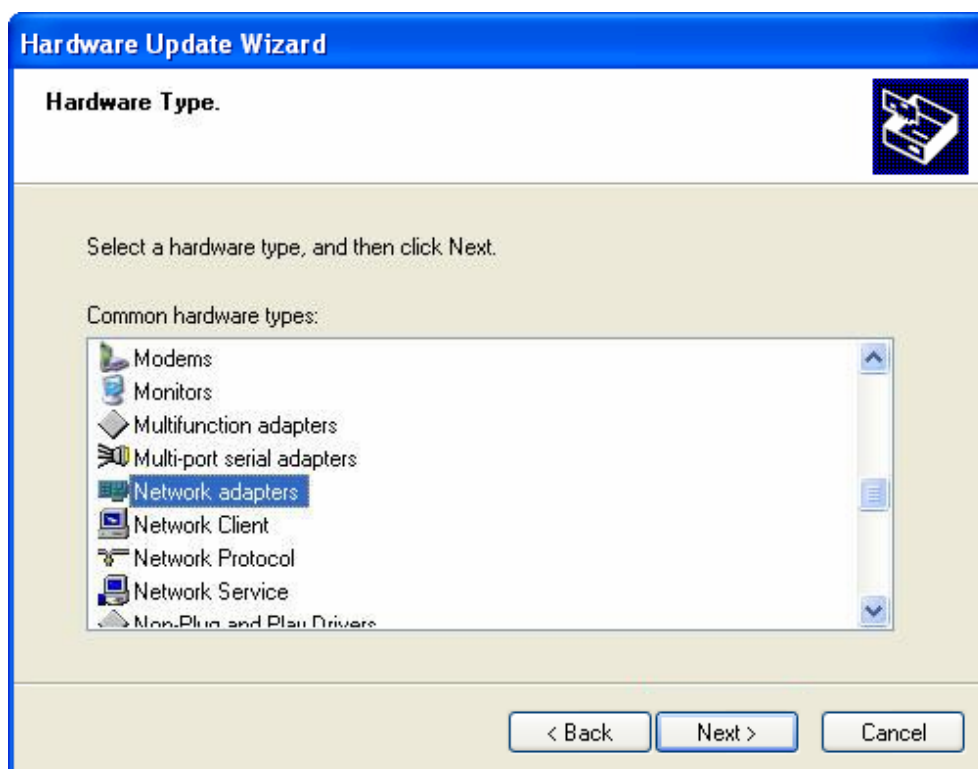


Figure 2-7

7. Click **Have Disk....**

 **Note:** Please do not select any network adapter which is listed in the window.

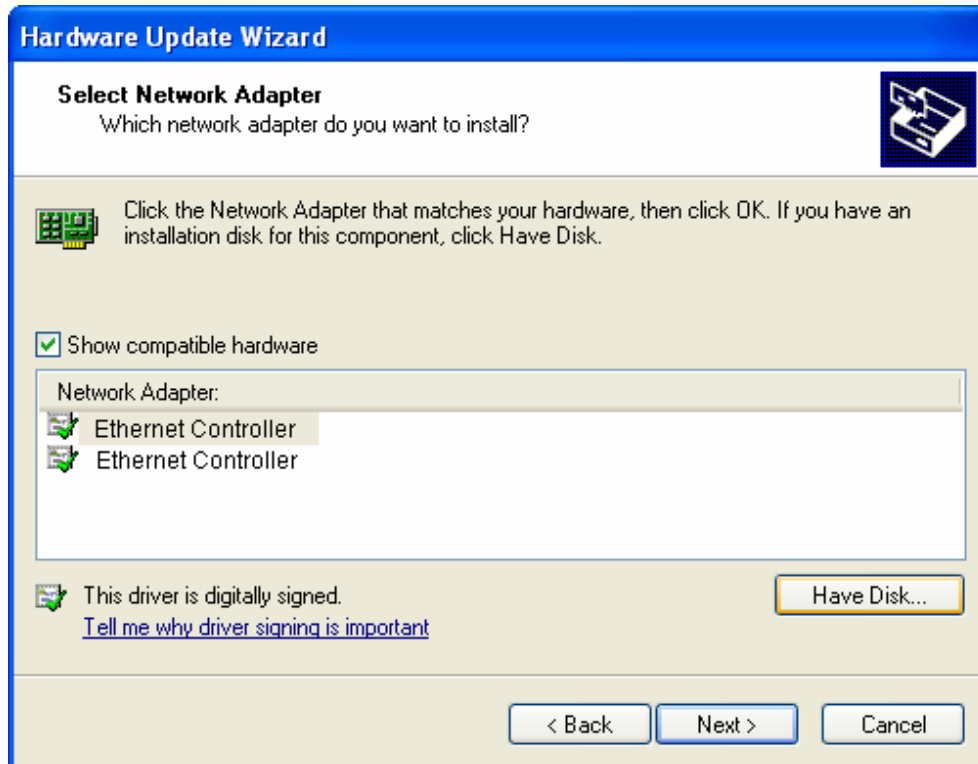


Figure 2-8

8. Click **Browse....**

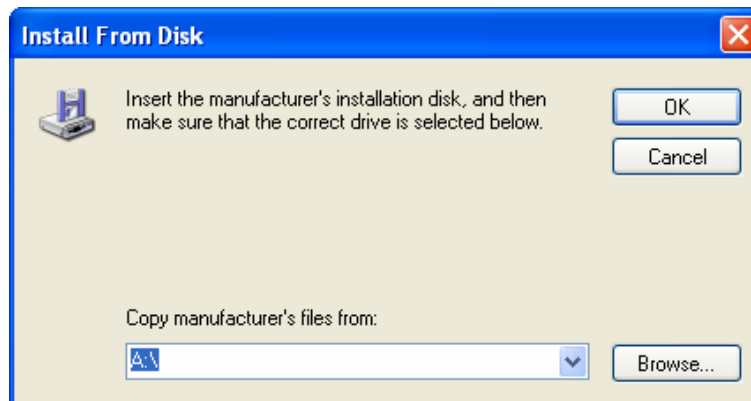


Figure 2-9

- Find the right product model (**TF-3200**) and operation system (**Windows XP**) in the resource CD directory and choose the **.inf** file, and then click **Open**.

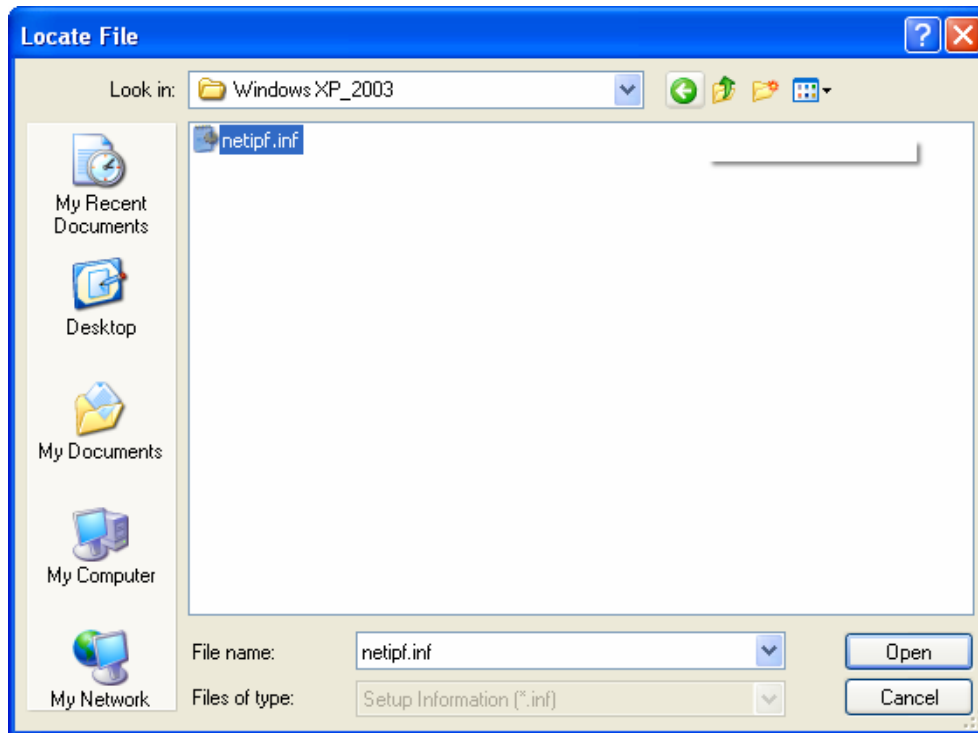


Figure 2-10

- Back to the **Install From Disk** screen, click **OK**.

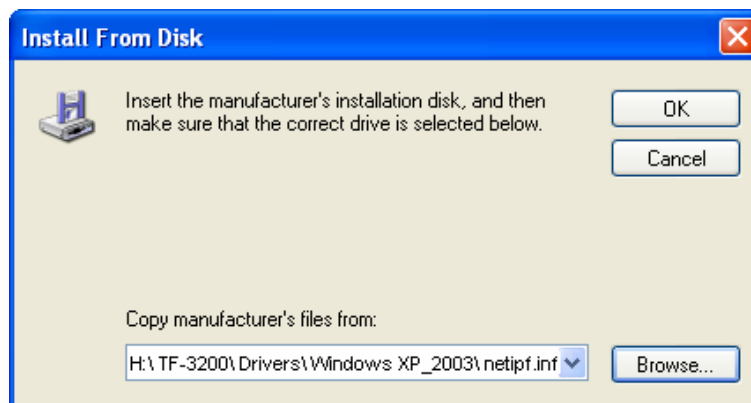


Figure 2-11

11. Click **Next**.

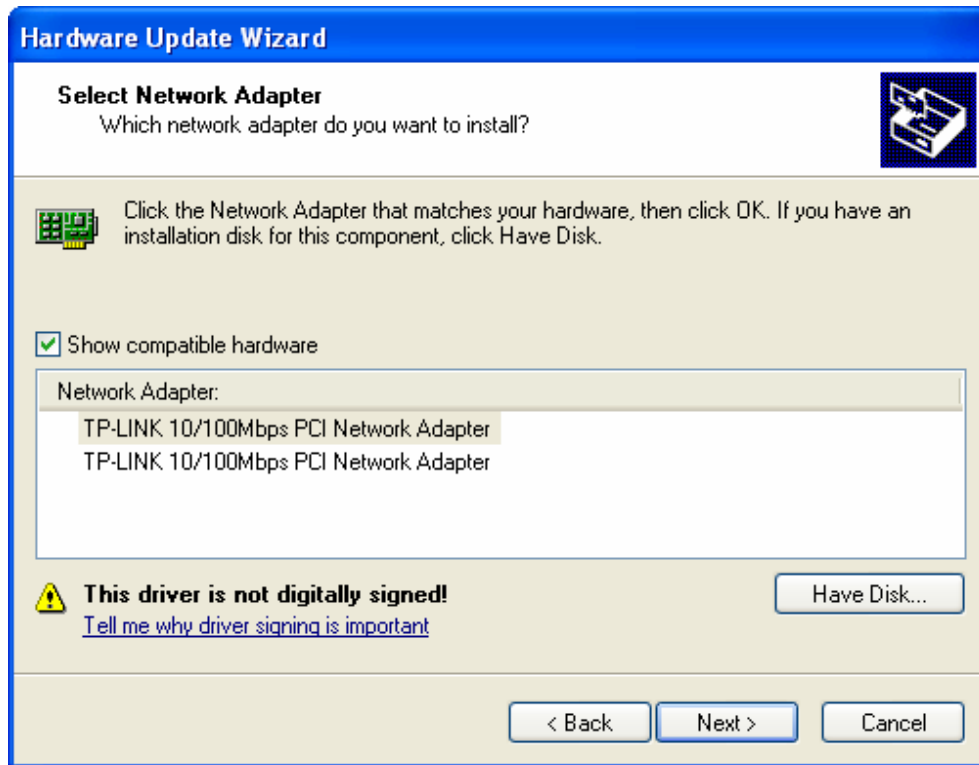


Figure 2-12

12. The **Hardware Installation** screen will pop up as shown in Figure 2-13; select **Continue Anyway**.



Figure 2-13

13. Wait a few seconds for the installation.

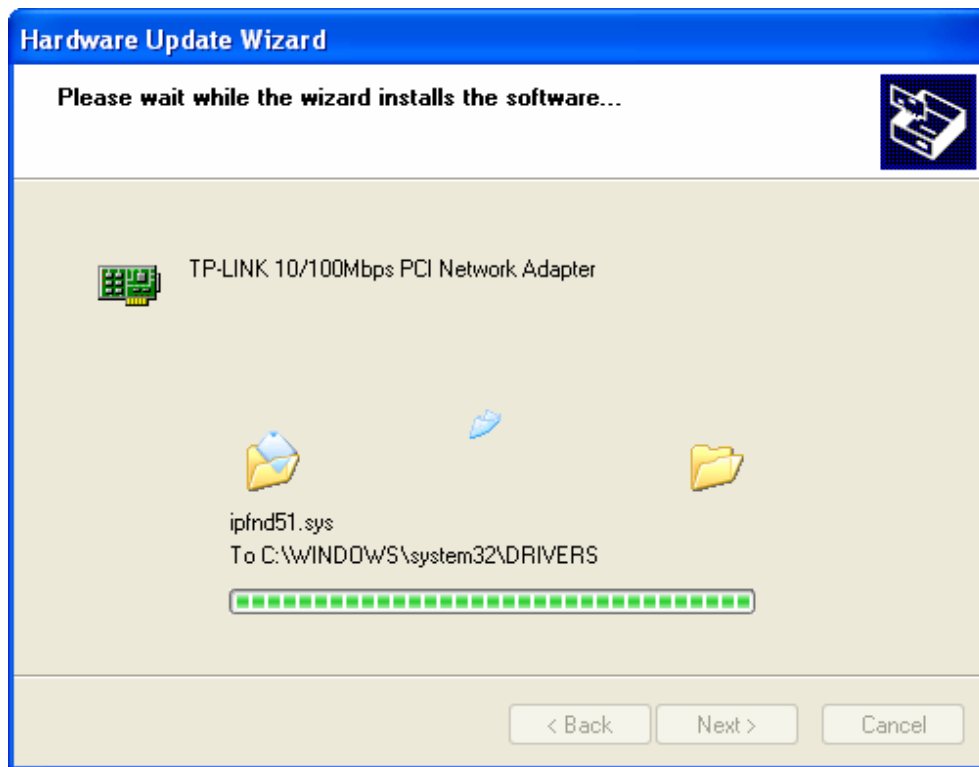


Figure 2-14

14. Click **Finish** to complete the installation.

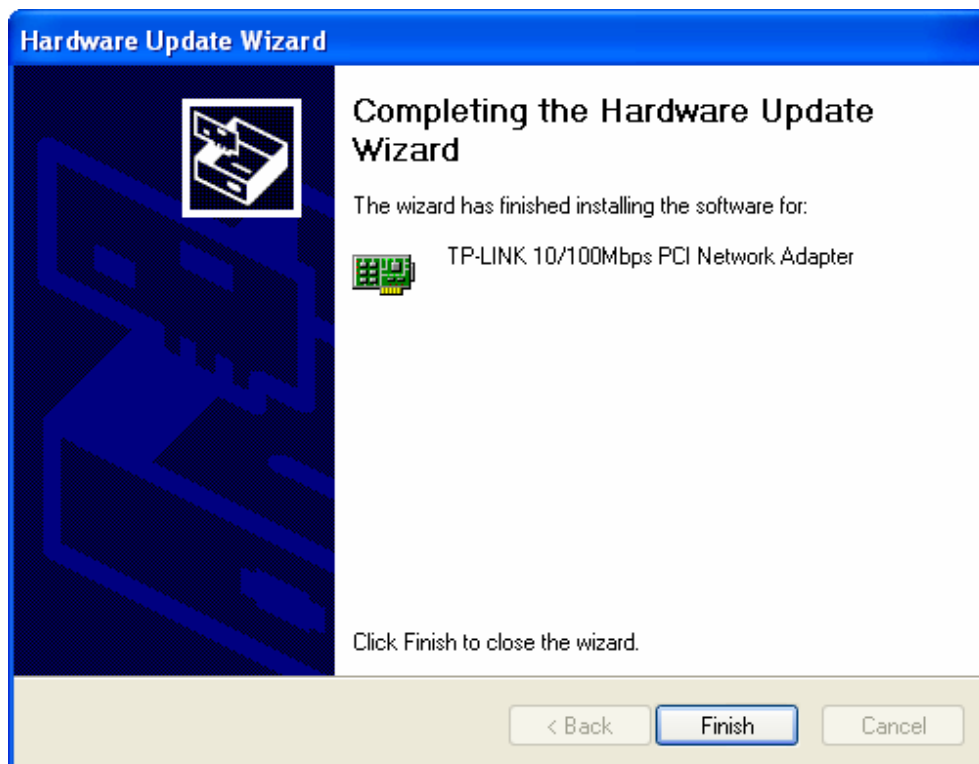


Figure 2-15

## 2.2.2 For Windows 7

1. Insert the TP-LINK Resource CD into the CD-ROM drive.
2. Right-click the icon **Computer** on the desktop, and then click **Manage**.

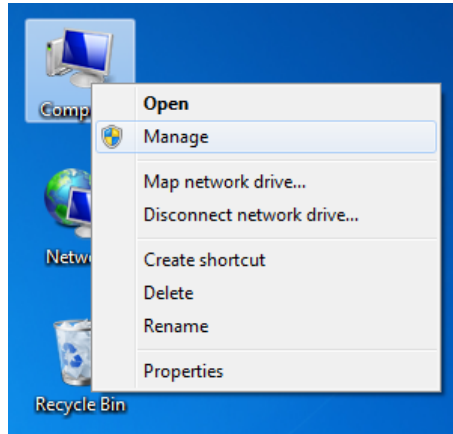


Figure 2-16

3. The **Computer Management** screen will appear as shown in Figure 2-17. Click **Device Manager**, and then you will see the various options on the right. Click **Other devices**, and then from the drop-down list please find **Ethernet Controller**. Right-click it, and then select **Update Driver Software....**

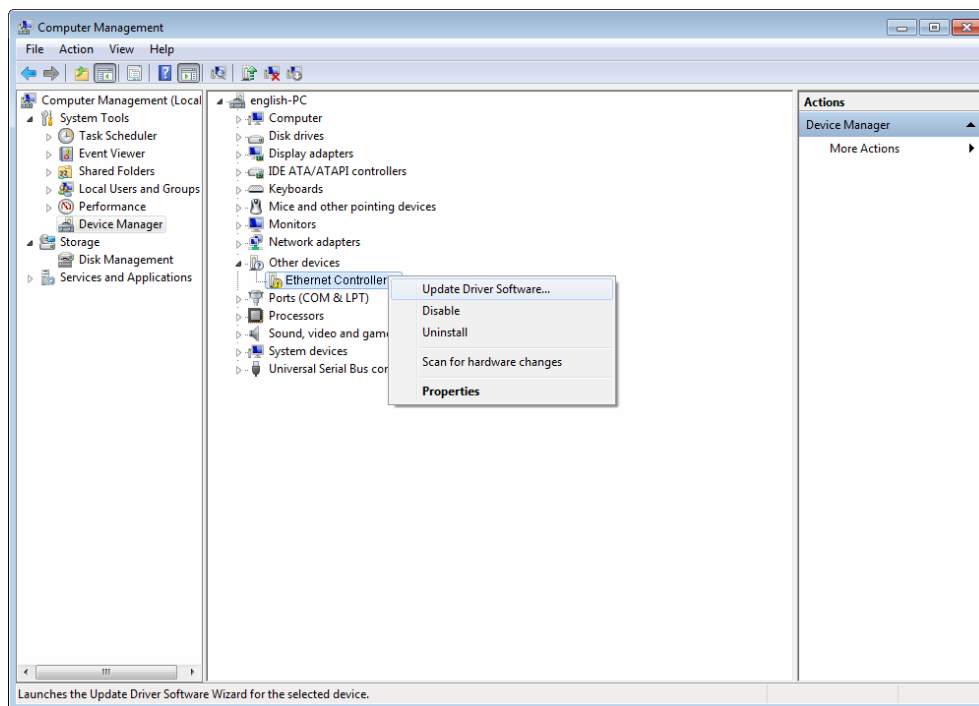


Figure 2-17

4. The next screen will appear as shown in Figure 2-18. Select **Browse my computer for driver software**.



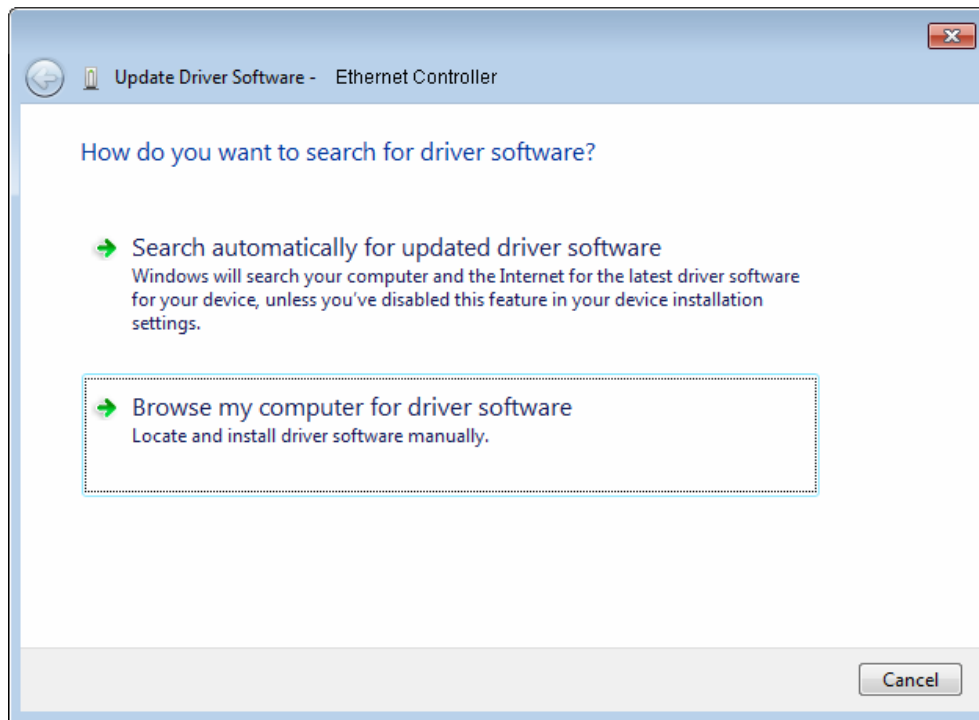


Figure 2-18

5. Select **Let me pick from a list of device drivers on my computer**, and then click **Next**.

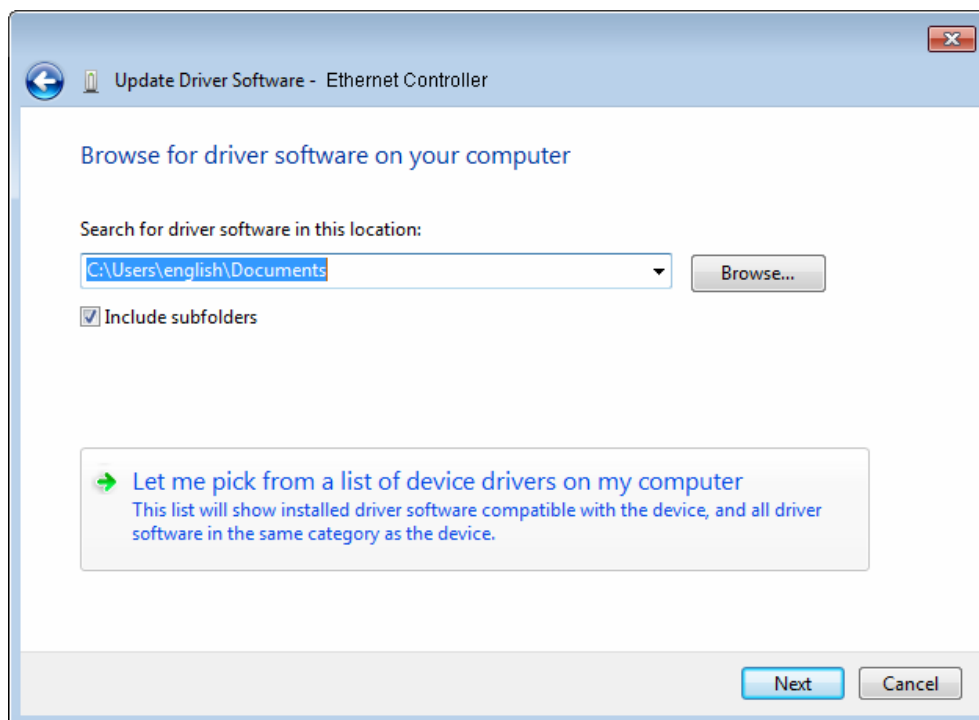


Figure 2-19

6. Select **Show All Devices**, and then Click **Next**.

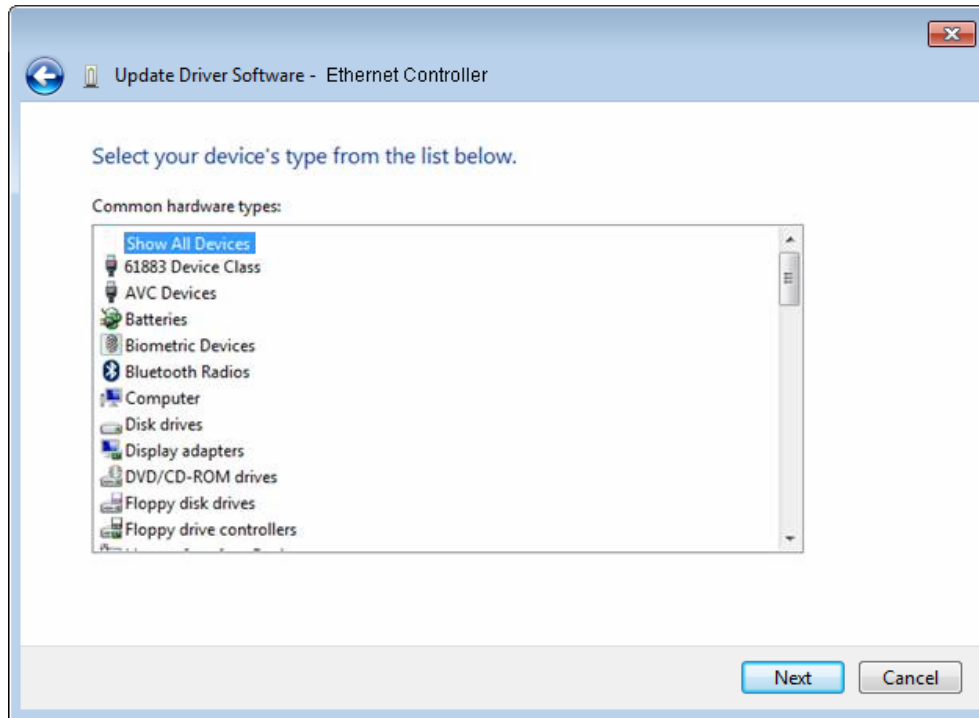


Figure 2-20

7. Click **Have Disk...** in the screen as shown in Figure 2-21.

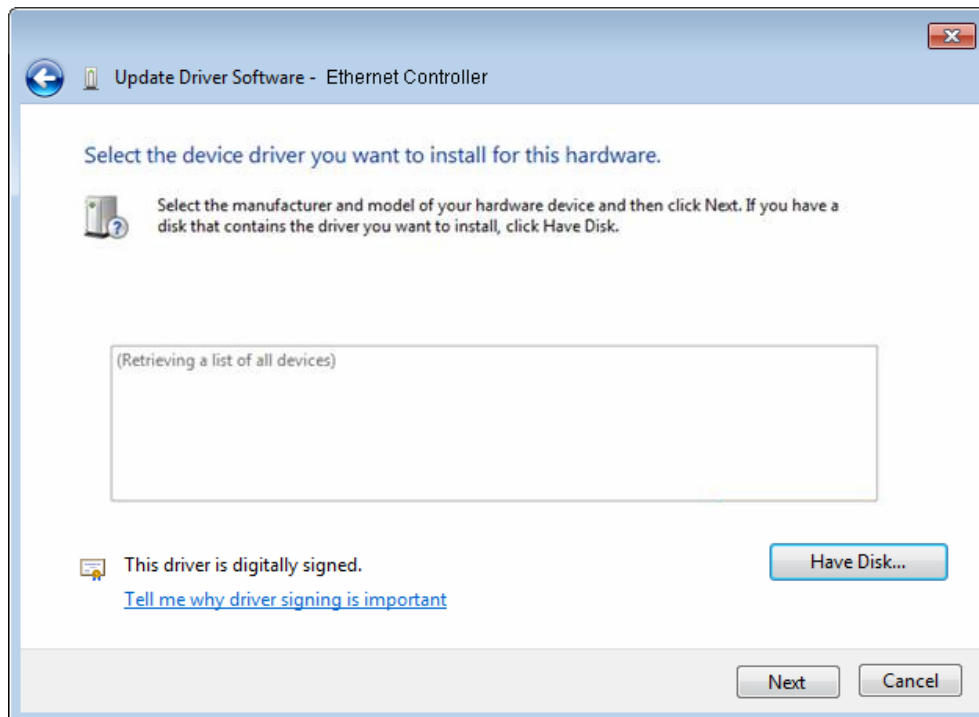


Figure 2-21

8. Click **Browse...** in the **Install From Disk** window as shown in Figure 2-22.

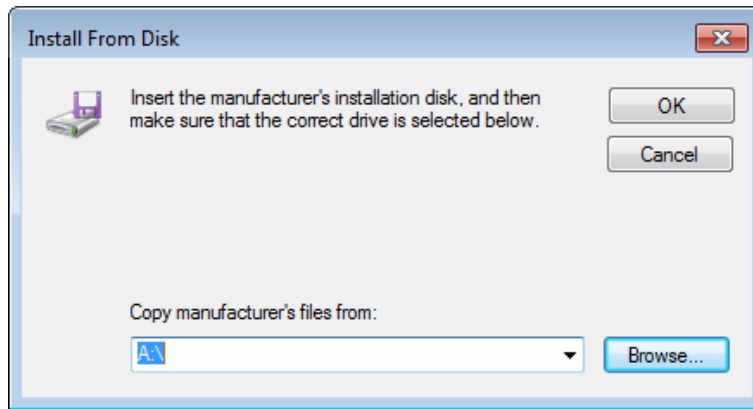


Figure 2-22

9. Find the right product model (**TF-3200**) and operation system (**Windows 7**) in the resource CD directory and choose the **.inf** file, and then click **Open**.

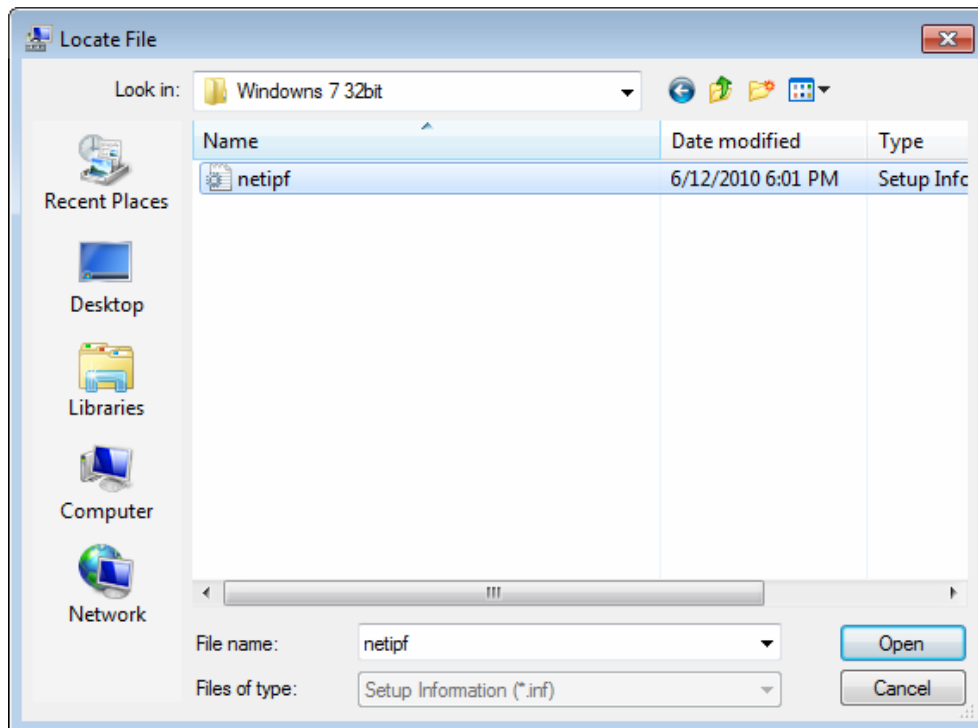


Figure 2-23

10. Back to the **Install From Disk** window as shown in Figure 2-24, click **OK**.

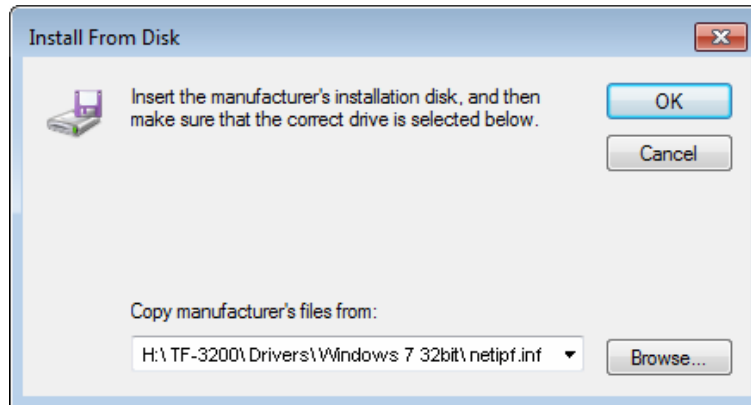


Figure 2-24

11. Click **Yes** in the **Update Driver Warning** window to continue the installation.

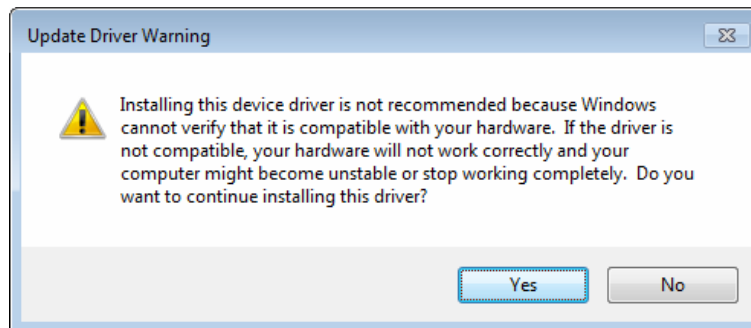


Figure 2-25

12. Click **Next** in the next screen as shown in Figure 2-26.

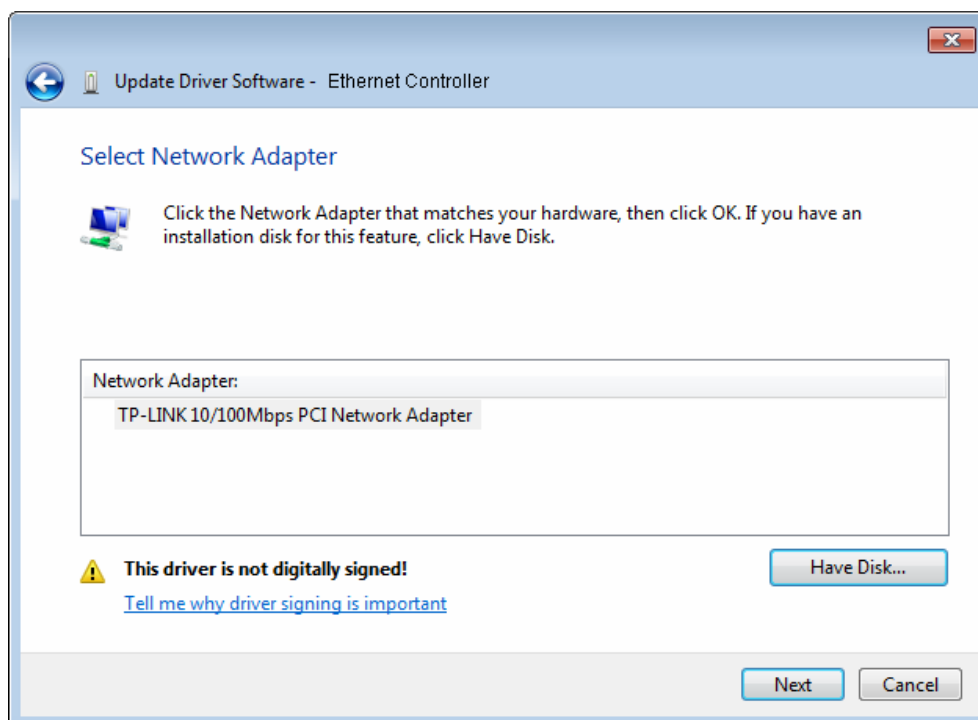


Figure 2-26

13. Select **Install this driver software anyway** in the **Windows Security** window as shown in Figure 2-27.

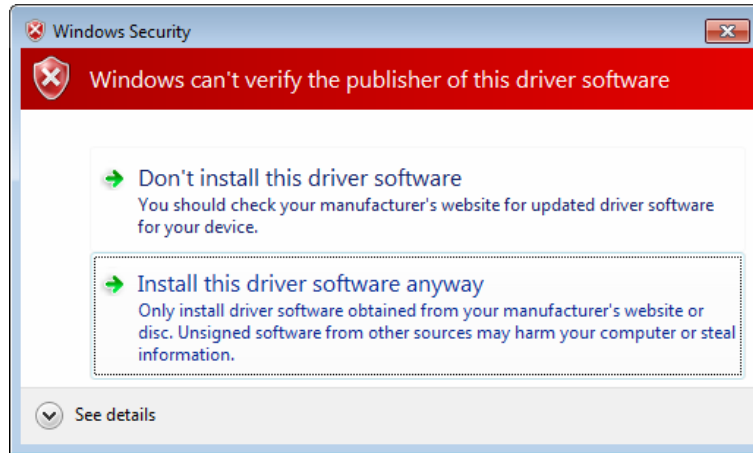


Figure 2-27

14. Wait a few seconds for the installation.

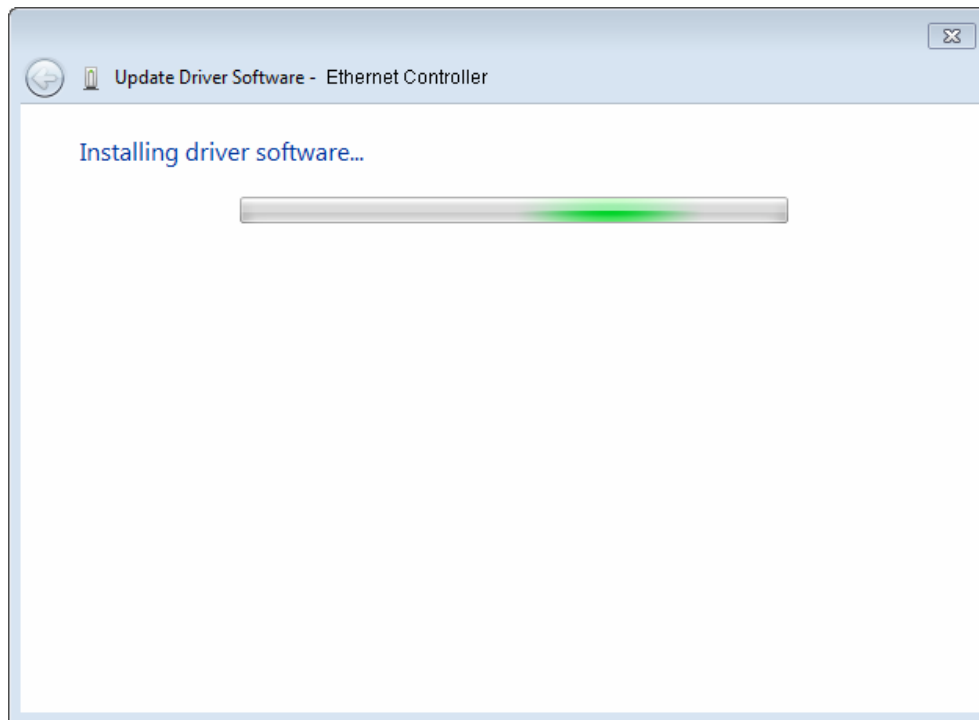


Figure 2-28

15. Click **Close** to complete the installation.

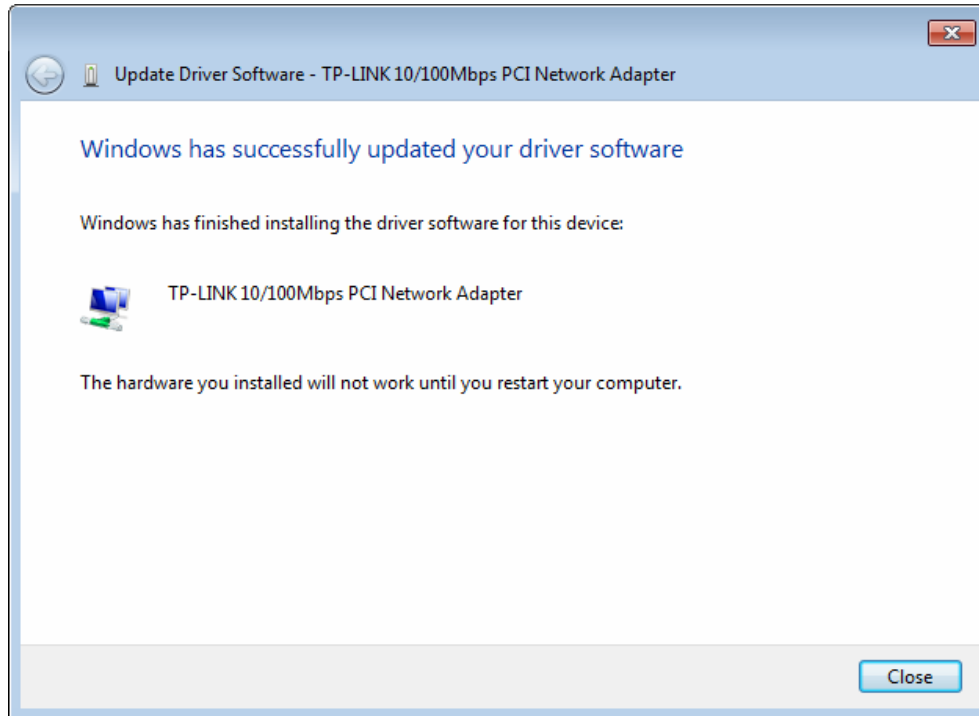


Figure 2-29

16. Click **Yes** in the **System Settings Change** window (as shown in Figure 2-30) to restart the computer, so that the installation will take effect.

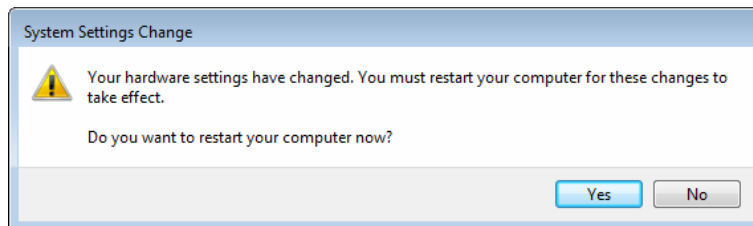


Figure 2-30

### 2.2.3 For Windows Vista

1. Insert the TP-LINK Resource CD into the CD-ROM drive.
2. Right-click the icon **Computer** on the desktop, and then click **Manage**.

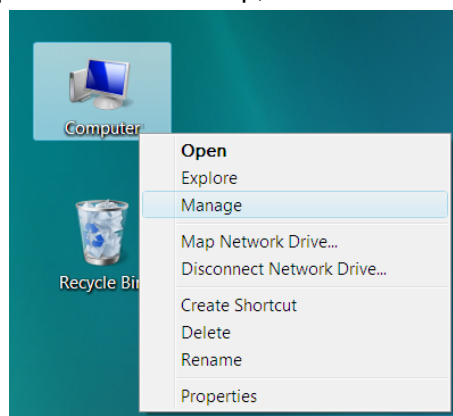


Figure 2-31

- The **Computer Management** screen will appear as shown in Figure 2-32. Click **Device Manager**, and then you will see the various options on the right. Click **Other devices**, and then from the drop-down list please find **Ethernet Controller**. Right-click it, and then select **Update Driver Software....**

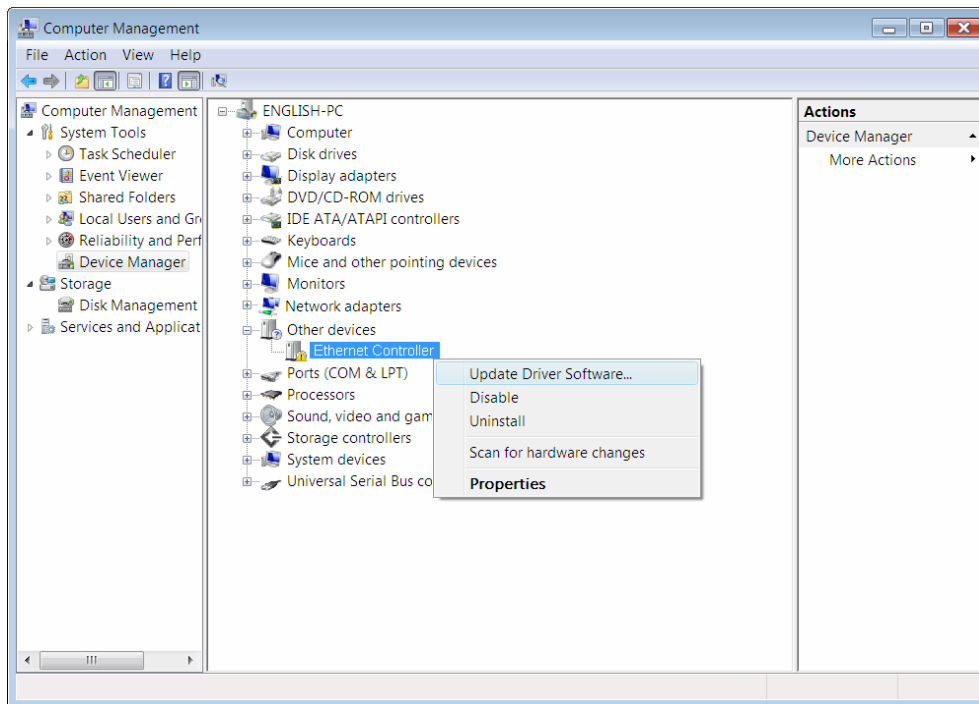


Figure 2-32

- The next screen will appear as shown in Figure 2-33. Select **Browse my computer for driver software**.

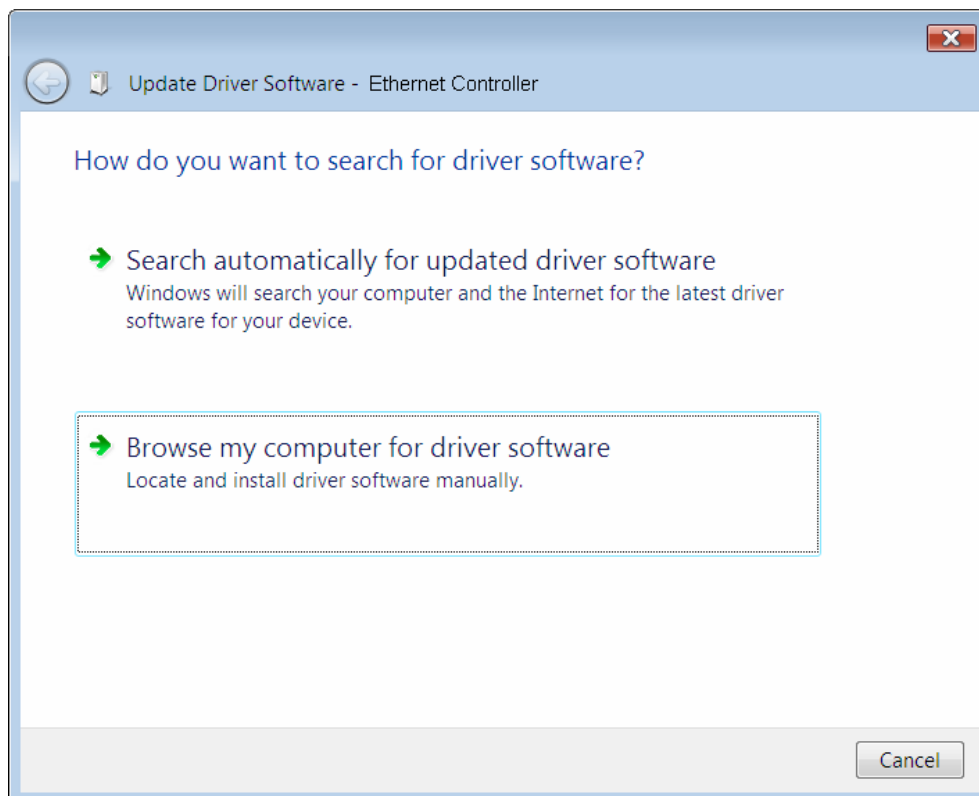


Figure 2-33

5. Select **Let me pick from a list of device drivers on my computer**, and then click **Next**.

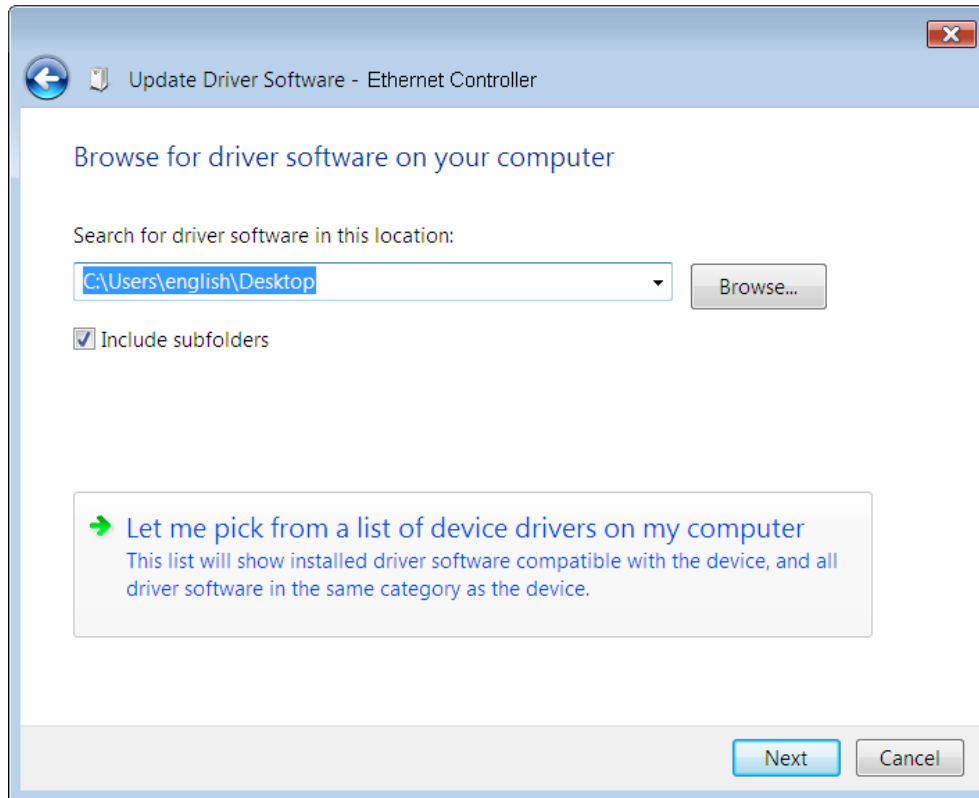


Figure 2-34

6. Select **Show All Devices**, and then Click **Next**.

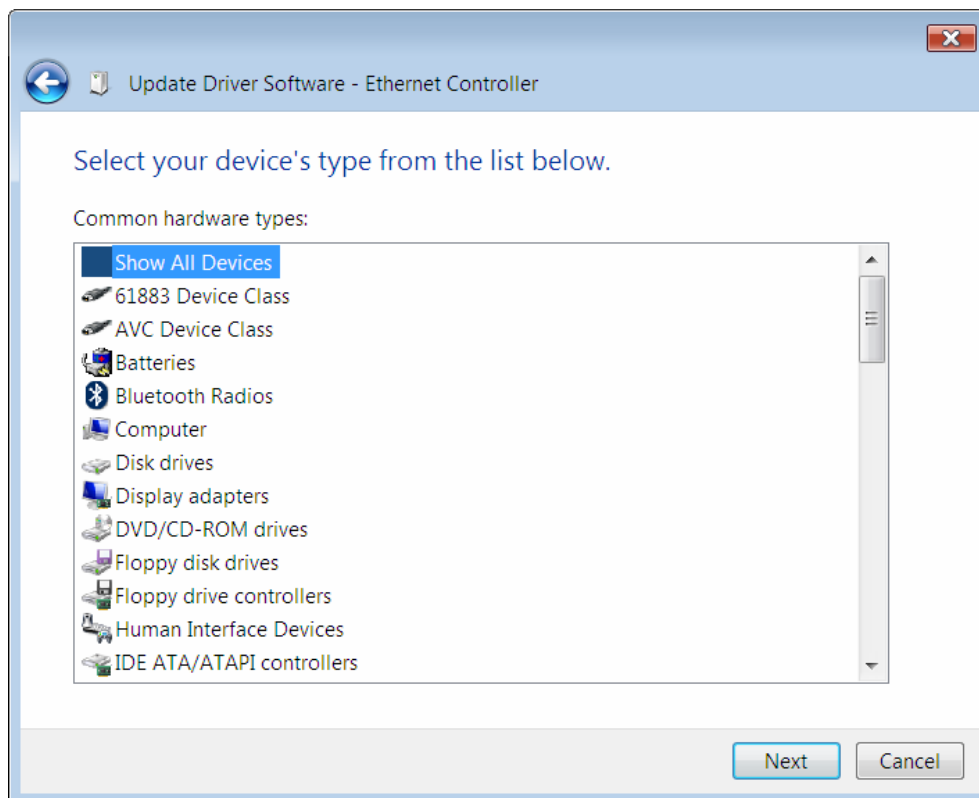


Figure 2-35



- Click **Have Disk...** in the screen as shown in Figure 2-36.

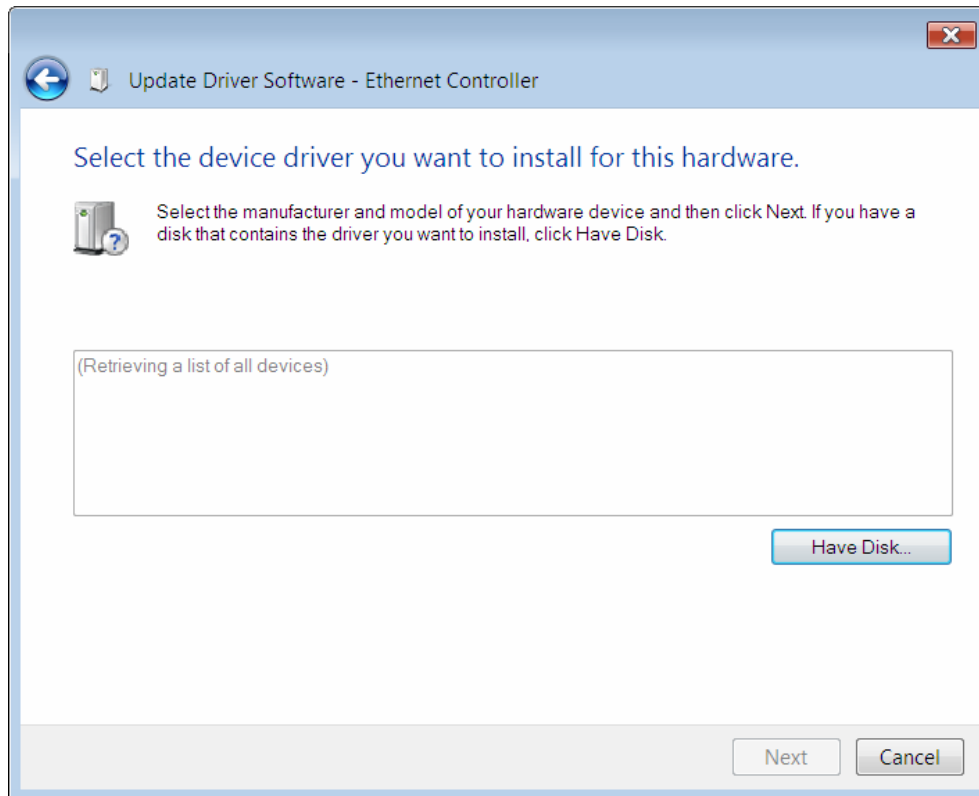


Figure 2-36

- Click **Browse...** in the **Install From Disk** window as shown in Figure 2-37.

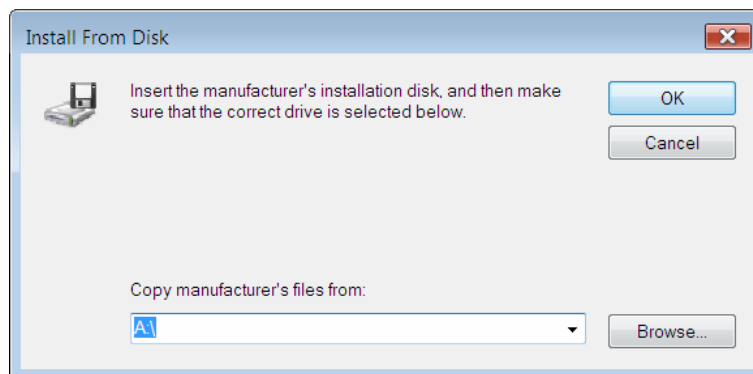


Figure 2-37

- Find the right product model (**TF-3200**) and operation system (**Windows Vista**) in the resource CD directory and choose the **.inf** file, and then click **Open**.

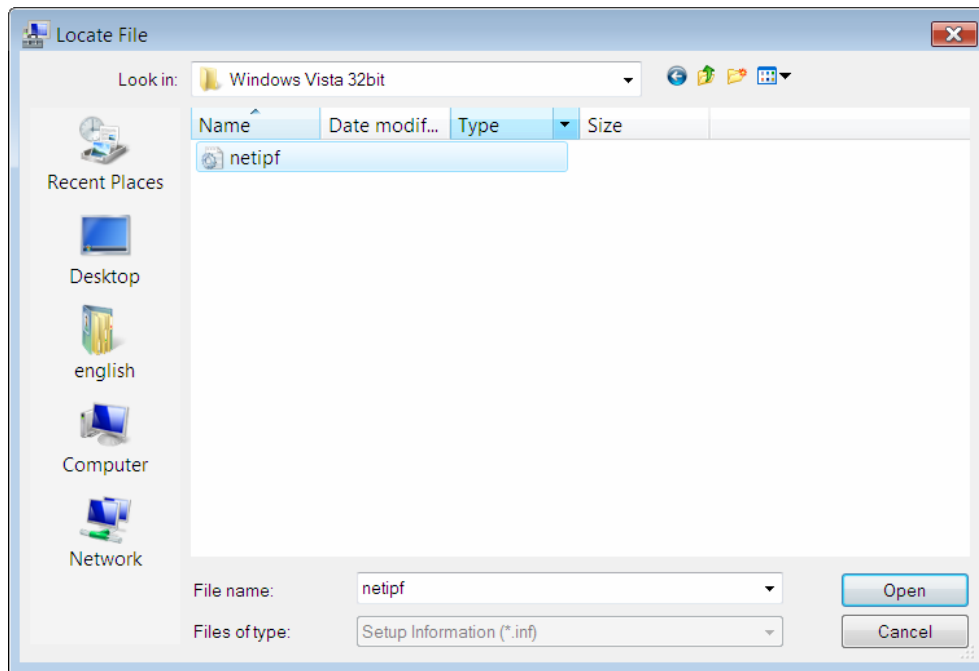


Figure 2-38

10. Back to the **Install From Disk** window as shown in Figure 2-39, click **OK**.

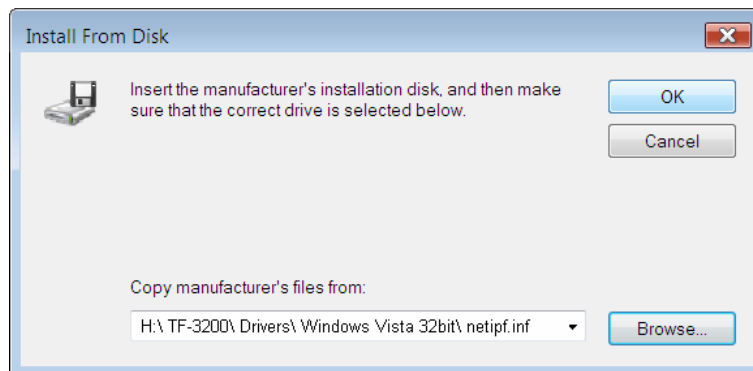


Figure 2-39

11. Click **Yes** in the **Update Driver Warning** window to continue the installation.

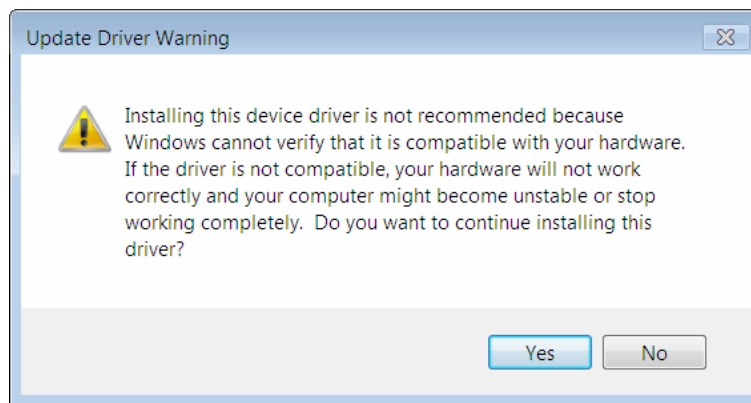


Figure 2-40

12. Click **Next** in the next screen as shown in Figure 2-41.

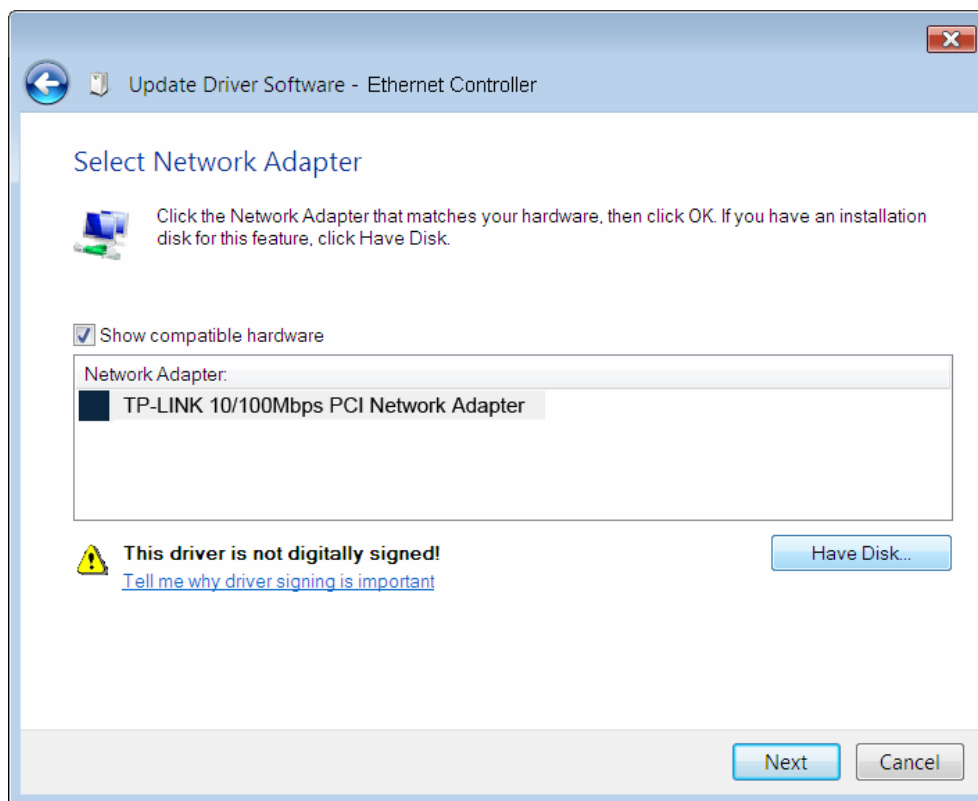


Figure 2-41

13. Select **Install this driver software anyway** in the **Windows Security** window as shown in Figure 2-42.

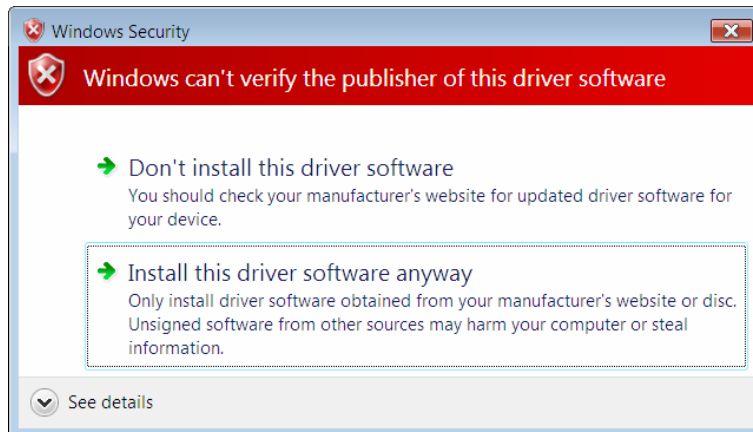


Figure 2-42

14. Wait a few seconds for the installation.

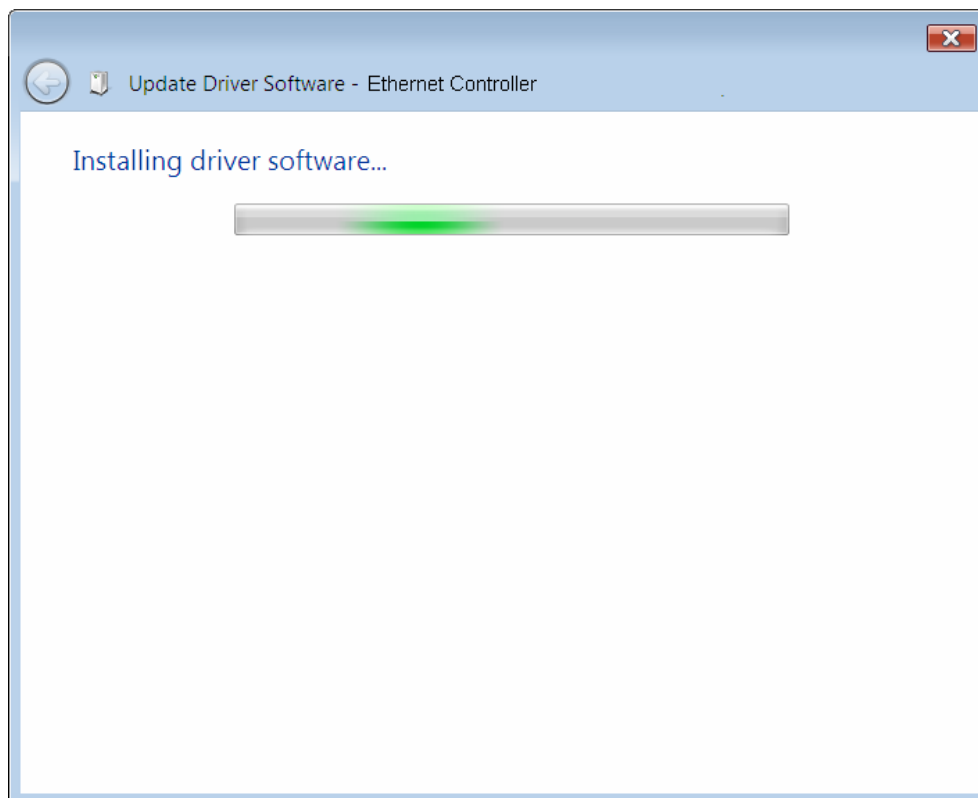


Figure 2-43

15. Click **Close** to complete the installation.

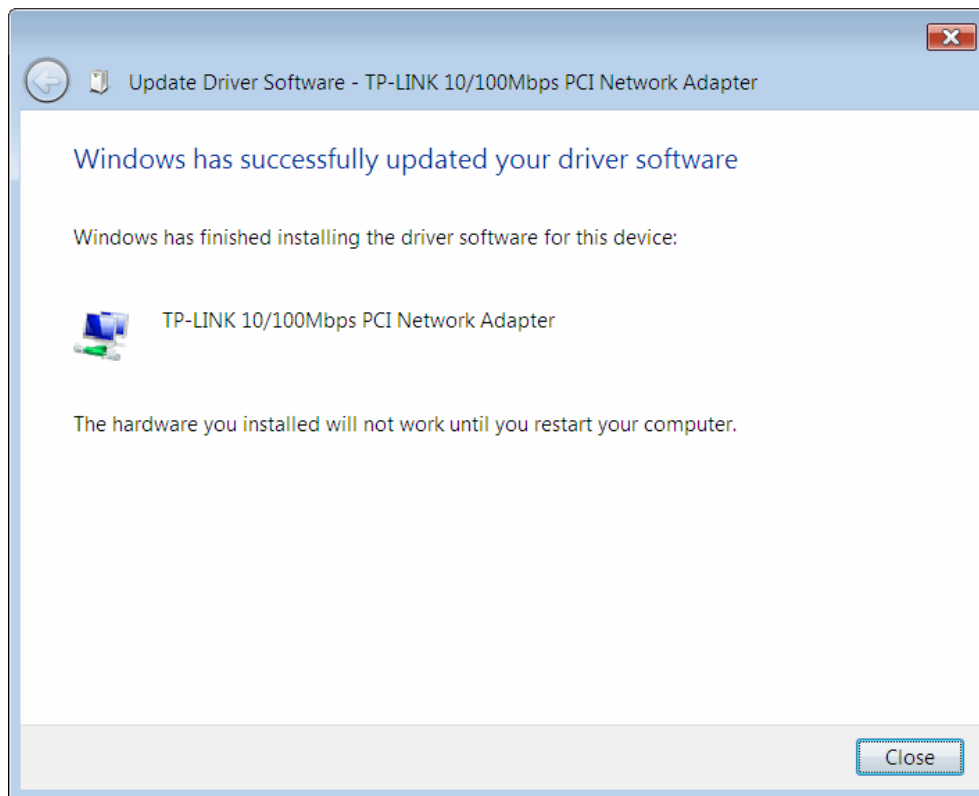


Figure 2-44

16. Click **Yes** in the **System Settings Change** window (as shown in Figure 2-45) to restart the computer, so that the installation will take effect.

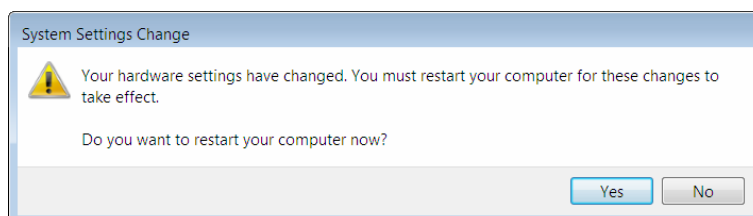


Figure 2-45

## Appendix A: Specifications

Normal	
Interface	32-bit PCI interface
Standards	IEEE 802.3 10Base-T, IEEE 802.3u 100Base-TX
Software	Drivers for Linux, Windows 7 (32bit /64bit), Windows Vista (32bit /64bit), Windows 2000, Windows 2003, Windows XP
Transmission Rate	10/100Mbps
Hardware	IBM PC compatibles(it must have PCI slot)
Connector Supported	RJ45
IRQ Line	Assigned by system
I/O Address	Assigned by system

Environmental and Physical	
Operating Temperature	0°C ~ 40°C (32°F ~104°F)
Storage Temperature	-40°C ~ 70°C (-40°F ~158°F)
Working Humidity	10% ~ 90% RH, Non-condensing
Storage Humidity	5% ~ 95% RH, Non-condensing

## Appendix B: Troubleshooting

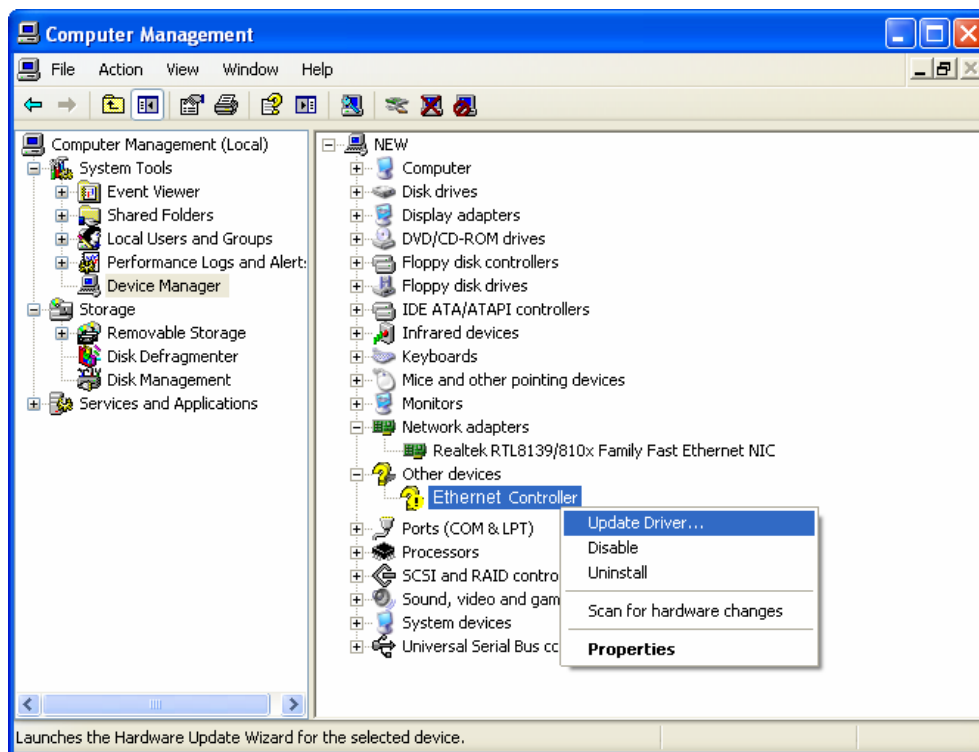
### 1. What should I do if PC cannot find the new hardware?

Check to see if the network adapter is inserted in the PCI slot properly; otherwise, please reinsert the adapter.

If the problem remains, please try to change another PCI slot.

### 2. What should I do if PC cannot identify the new hardware?

If you couldn't find the network adapter you've installed by going to **“(My) Computer > Manager > Device Manager > Network Adapter >...”** ; please go to **“(My) Computer > Manager > Device Manager > Other devices > Ethernet Controller”** , and then follow the rest steps of software installation to update driver.



## Free Manuals Download Website

<http://myh66.com>

<http://usermanuals.us>

<http://www.somanuals.com>

<http://www.4manuals.cc>

<http://www.manual-lib.com>

<http://www.404manual.com>

<http://www.luxmanual.com>

<http://aubethermostatmanual.com>

Golf course search by state

<http://golfingnear.com>

Email search by domain

<http://emailbydomain.com>

Auto manuals search

<http://auto.somanuals.com>

TV manuals search

<http://tv.somanuals.com>