

TP-LINK[®]

User Guide

TL-WN321G

54M Wireless USB Adapter



-
- 2.4GHz • 802.11g/b

Rev:3.0

COPYRIGHT & TRADEMARKS

Specifications are subject to change without notice. **TP-LINK**[®] is a registered trademark of TP-LINK Technologies Co., Ltd. Other brands and product names are trademarks or registered trademarks of their respective holders.

No part of the specifications may be reproduced in any form or by any means or used to make any derivative such as translation, transformation, or adaptation without permission from TP-LINK Technologies Co., Ltd. Copyright © 2006 TP-LINK Technologies Co., Ltd. All rights reserved.

FCC STATEMENT

This equipment has been tested and found to comply with the limits for a class B digital device, pursuant to part 15 of the FCC Rules. These limits are designed to provide reasonable protection against harmful interference in a residential installation.

This equipment generates, uses and can radiate radio frequency energy and, if not installed and used in accordance with the instructions, may cause harmful interference to radio communications. However, there is no guarantee that interference will not occur in a particular installation. If this equipment does cause harmful interference to radio or television reception, which can be determined by turning the equipment off and on, the user is encouraged to try to correct the interference by one or more of the following measures:

- Reorient or relocate the receiving antenna.
- Increase the separation between the equipment and receiver.
- Connect the equipment into an outlet on a circuit different from that to which the receiver is connected.
- Consult the dealer or an experienced radio/TV technician for help.

This device complies with Part 15 of the FCC Rules. Operation is subject to the following two conditions:

- (1) This device may not cause harmful interference.
- (2) This device must accept any interference received, including interference that may cause undesired operation.

Changes or modifications to this unit not expressly approved by the party responsible for compliance could void the user's authority to operate the equipment.

FCC RF Radiation Exposure Statement:

This equipment complies with FCC RF radiation exposure limits set forth for an uncontrolled environment. This device and its antenna must not be co-located or operating in conjunction with any other antenna or transmitter.

"To comply with FCC RF exposure compliance requirements, the antenna used for this transmitter must be installed to provide a separation distance of at least 20 cm from all persons and must not be co-located or operating in conjunction with any other antenna or transmitter".

CE Declaration of Conformity

For the following equipment: TL-WN321G



Is here with confirmed to comply with the requirements set out in the Council Directive on the Approximation of the Laws of the Member States relating to Electromagnetic Compatibility (89/336/EEC), Low-voltage Directive (73/23/EEC) and the Amendment Directive (93/68/EEC), the procedures given in European Council Directive 99/5/EC and 89/336/EEC.

The equipment was passed. The test was performed according to the following European standards:

- EN 300 328 V.1.4.1 (2003)
- EN 301 489-1 V.1.4.1 (2002) / EN 301 489-17 V.1.2.1 (2002)
- EN 60950-1: 2001

European standards dictate maximum radiated transmit power of 100mW EIRP and frequency range 2.400-2.4835GHz; In France, the equipment must be restricted to the 2.4465-2.4835GHz frequency range and must be restricted to indoor use.

Package Contents.....	1
Chapter 1: Introduction.....	2
1.1 Overview of the product	2
1.2 Features.....	2
1.3 LED Status	2
Chapter 2: Installation Guide.....	3
2.1 Software Installation.....	3
2.1.1 Overview.....	3
2.1.2 Software Installation for Windows 2000	3
2.2 Hardware Installation	6
2.3 Uninstall Software	6
2.3.1 Uninstall the driver software from your PC.....	6
2.3.2 Uninstall the utility software from your PC.....	6
Chapter 3: Configuration	7
3.1 Profile.....	7
3.1.1 Add or Edit a Configuration Profile	8
3.2 Link Status	10
3.3 Site Survey.....	11
3.3 Statistics.....	12
3.4 Advanced	13
3.5 About.....	13
3.7 An example for application	14
Appendix A: Specifications	15
Appendix B: Glossary.....	16
Appendix C: Contact Information	18

Package Contents

The following contents should be found in your box:

- One TL-WN321G USB Wireless Adapter
- One USB extension cable
- Quick Installation Guide
- One TL-WN321G Wireless Adapter Resource CD, including:
 - Utility and Drivers
 - User Guide
 - Other Helpful Information

Note: If any of the listed contents is damaged or missing, please contact the retailer from whom you purchased the TL-WN321G Wireless Adapter for assistance.

Chapter 1: Introduction

1.1 Overview of the product

The TP-LINK TL-WN321G USB Wireless Adapter gives you the flexibility to install your PC or notebook PC in the most convenient location available, without the cost of running the network cables.

Its auto-sensing capability allows high packet transfer up to 54Mbps for maximum throughput, or dynamic range shifting to lower speeds due to distance or operating limitations in an environment with a lot of electromagnetic interference. It can also interoperate with all 11Mbps wireless (802.11b) products. Your wireless communications are protected by up to 128-bit WEP and WPA encryption, so your data stays secure.

1.2 Features

- Complies with IEEE802.11g, IEEE802.11b standards
- Supports WPA data security, IEEE802.1x authentication, TKIP/AES encryption, 64/128-bit WEP encryption
- Supports 54/48/36/24/18/12/9/6Mbps or 11/5.5/3/2/1Mbps wireless LAN data transfer rates
- Provides USB interface
- Supports Ad-Hoc and Infrastructure modes
- Supports roaming between access points when configured in Infrastructure mode
- Eases configuration and provides monitoring information
- Supports Windows 98SE, Me, 2000, XP
- Internal Antenna

1.3 LED Status

The LED on the top of this card indicates Link/Act status. It blinks at green light when sending and receiving data.

Chapter 2: Installation Guide

2.1 Software Installation

2.1.1 Overview

The Adapter's Setup Wizard will guide you through the installation procedure for Windows 98SE, Me, 2000 and XP. The Setup Wizard will guide you install the Utility and drivers.

If you install the hardware before the software, you will be prompted "Found New Hardware Wizard", click the **Cancel** button, and run the Setup Wizard program on the CD-ROM.

The Setup steps for Windows 98SE, Me, 2000 and XP are very similar. The following setup steps are for windows 2000.

2.1.2 Software Installation for Windows 2000

1. Insert the Resource CD into your CD-ROM drive, click the **Start** button and choose **Run**. In the field that appears, enter F:\XXX\Setup.exe (if "F" is the letter of your CD-ROM drive; XXX presents the setup program path, which is labeled on the Resource CD), figure 2-1 should then appear.
2. You can click the **Cancel** button to end the installation on the Preparing Setup screen, figure 2-1. Otherwise, the Setup Wizard will display a screen similar to that shown in figure 2-2 after a moment.

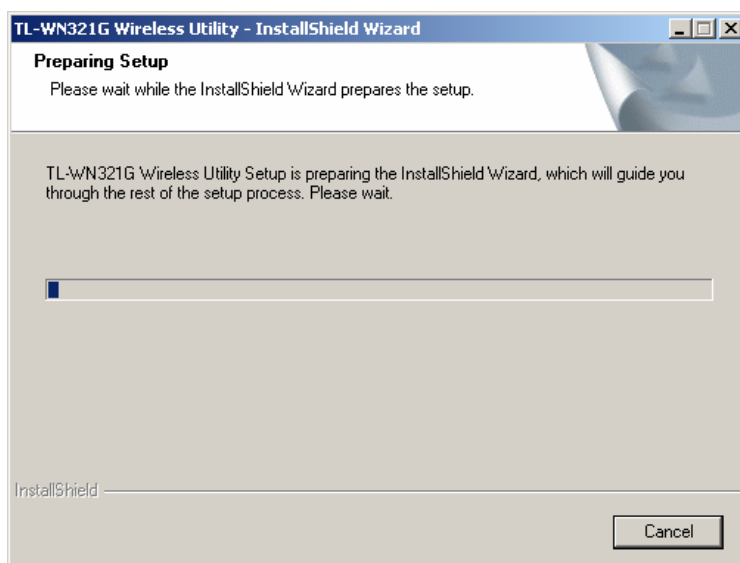


Figure 2-1 Preparing Setup

- To continue, click the **Next** button on the screen, figure 2-2. Click the **Cancel** button to end the Installation.

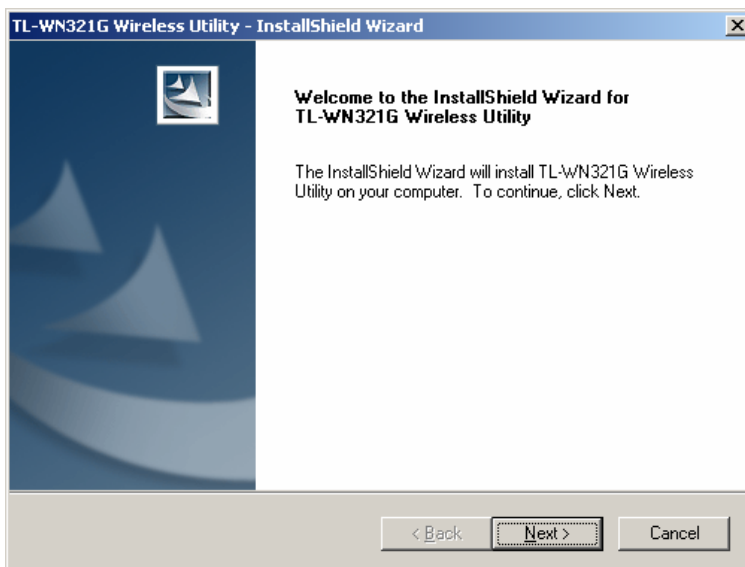


Figure 2-2 Start Setup

- Click **Browse** to change the destination location for the software in figure 2-3. Click **Next** to continue the Installation. Click **Back** to return to the previous page, or click **Cancel** to end the Installation.

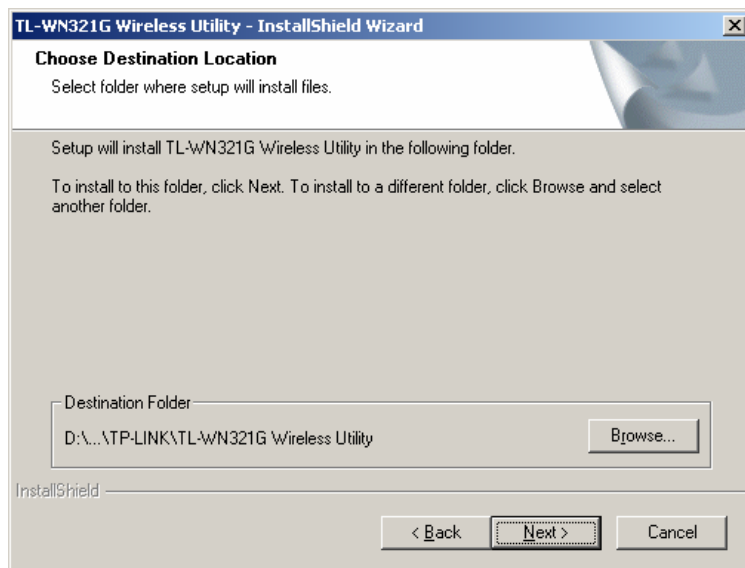


Figure 2-3 Choose Destination Location

- While files are copying, you will see a warning box shown in figure 2-4. Please select **YES** to continue installation. Our drivers have been tested thoroughly, and are able to work with the operating system.

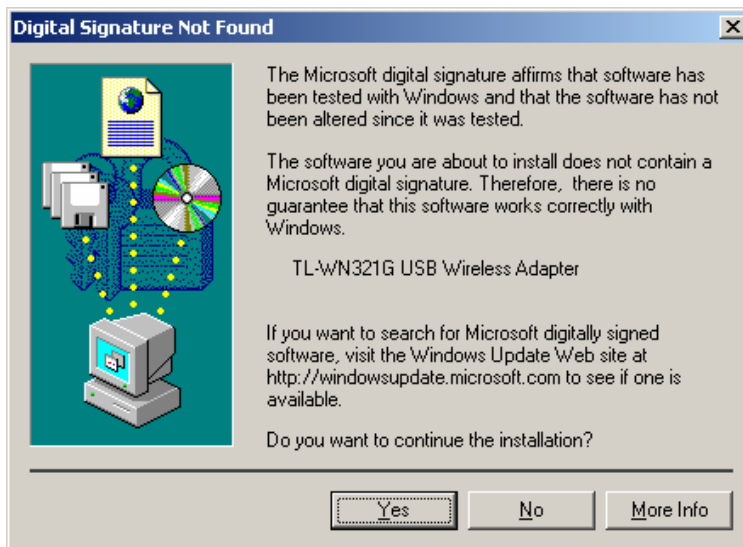


Figure 2-4 Windows 2000 Warning Box

- After the files have been successfully copied, the screen in figure 2-5 will appear. Click the **Finish** button to finish the wizard.

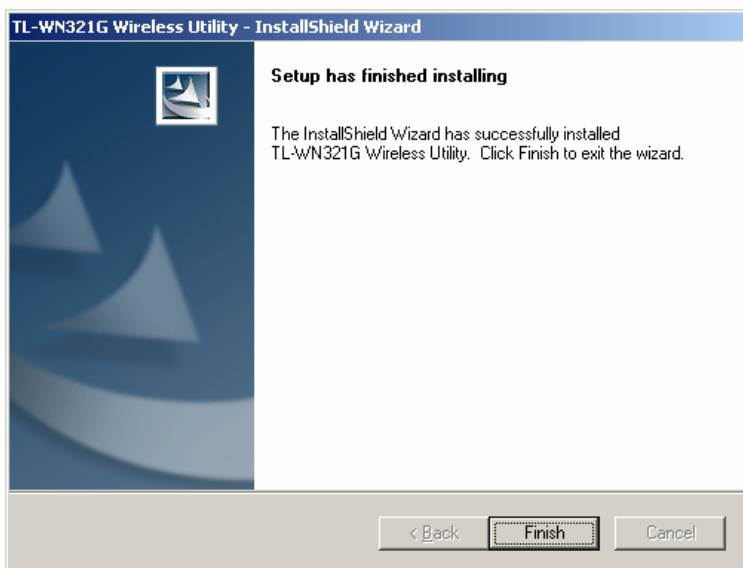




Figure 2-5 Finish

- After installing the software, Please plug the adapter into your PC. If you need instructions as to how to do this, please refer to [section 2.2 Hardware Installation](#). If you have plugged it into you PC already, please un-plug it and plug it back in. The OS will automatically detect the adapter and automatically setup the driver for the adapter. If it does not, please follow the setup steps to finish the driver installation.

After installing the driver successfully, you should see an icon,  or , appear in your system tray.

2.2 Hardware Installation

1. Connect one end of the USB cable to the Adapter.
2. Connect the other end of the USB cable to the USB port on your computer. Because the Adapter gets its power from the host, there is no external power supply. The LED should light up when the Adapter is plugged in and the PC is on.

2.3 Uninstall Software

2.3.1 Uninstall the driver software from your PC

1. On the Windows taskbar, click the **Start** button, point to **Settings**, and then click **Control Panel**.
2. Double-click the **System** icon, click on the **Hardware** tab in the **System** window.
3. Click on the **Device Manager** button, double-click **Network Adapters**, and then right-click **TL-WN321G USB Wireless Adapter**.

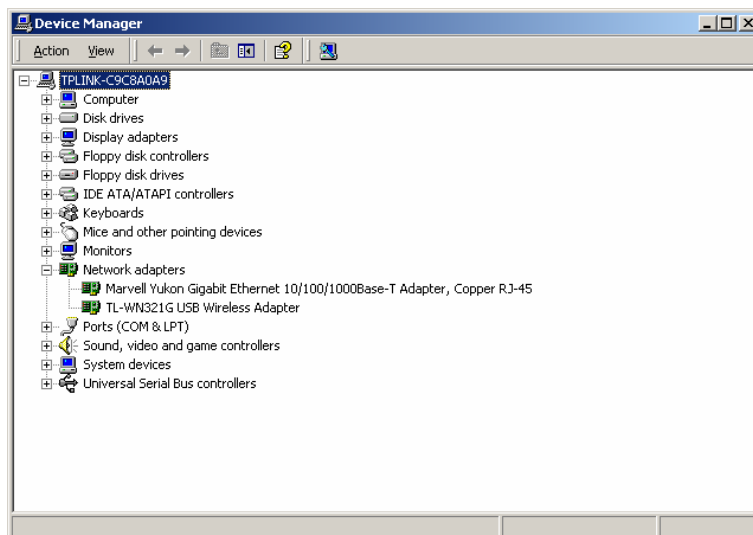


Figure 2-6 Uninstall Driver

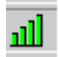

4. Click **Uninstall...**, shown in above figure 2-6, the system will uninstall the driver software of the adapter from your PC.



2.3.2 Uninstall the utility software from your PC


1. On the Windows taskbar, click the **Start** button, point to **Settings**, and then click **Control Panel**
2. Double-click the **Add/Remove Programs** icon, find the TL-WN321G program from the installed program list, highlight it and click the **Remove** button.
3. Following the Install Shield Wizard will uninstall the utility software from your PC.

Chapter 3: Configuration

TP-LINK TL-WN321G USB Wireless Adapter can be configured by its utility. This section describes how to configure your USB Wireless Adapter for wireless connectivity on your Wireless Local Area Network (WLAN) and use the data security encryption features.

After the Adapter's driver and utility has been installed, the adapter's tray icon,  or , will appear in your system tray. It means the utility is running on your system. If the utility does not run, you can run the utility by clicking: **Start> Program> TP-LINK> TL-WN321G WIRELESS UTILITY> TL-WN321G Wireless Utility**. If the icon still does not appear, the driver or utility may be installed incorrectly or the adapter is unplugged, please try again.

Icon  means the connection has been established. Icon  means there is no connection.


Double-click the  icon and the configuration screen of the utility will appear. You can also run the utility by clicking: **Start> Program> TP-LINK> TL-WN321G WIRELESS UTILITY> TL-WN321G Wireless Utility**. The utility provides a complete and easy to use set of tools to:

- Display current status information
- Edit and add configured profiles
- Display current diagnostics information

The section below introduces these above capabilities.

Note: If your OS is Windows XP, you can use Windows XP to configure the wireless network settings. (To use this function, you must upgrade the OS with sp1).

If you want to use Windows XP to configure wireless network settings, just exit the utility.

Right-click the icon  at the bottom of the screen, and click **Exit** to exit the utility.

3.1 Profile

Click the **Profile** tab of the utility and the **Profile** screen will appear, figure 3-1. The **Profile** screen provides tools to:

- Add a Profile
- Delete a profile
- Edit a profile
- Activate a profile

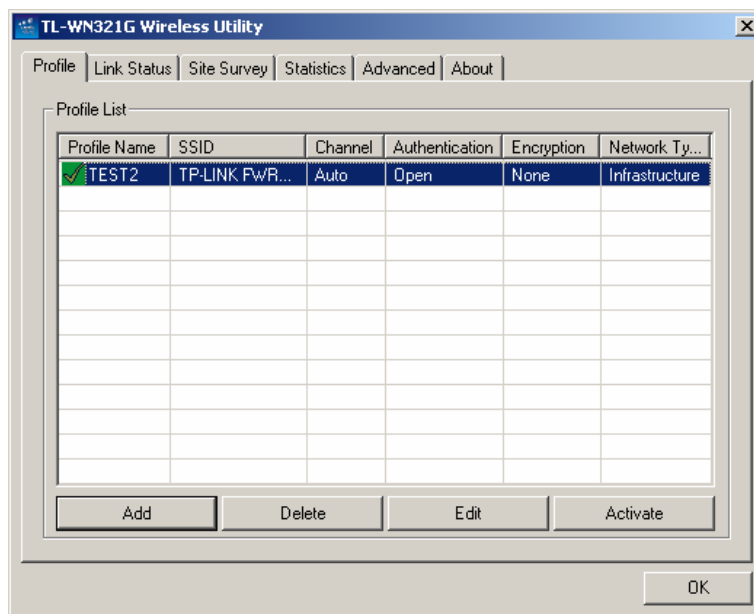


Figure 3-1 Profile Tab

To create a new profile, click the **Add** button on the Profile tab, the **Profile** configuration screen will appear as shown in figure 3-2.

To edit a profile, highlight the desired profile name on **Profile Name** list, and click the **Edit** button, the **Profile** configuration screen will appear shown in figure 3-1.

To delete a profile, highlight the desired profile name on **Profile Name** list, and click the **Delete** button.

To switch to another profile, highlight the desired profile name on **Profile Name** list, and click the **Activate** button.

Note: Do not forget to click the **Apply** button when you create a new profile for connection.

3.1.1 Add or Edit a Configuration Profile

To add a new configuration profile, click **Add** button on the Profile Management tab. To modify a configuration profile, select the configuration from the Profile list and click **Edit**.

The Profile Management dialog box will display a screen similar to that shown in Figure 3-2.

1. Edit the Configuration tab
 - **Profile Name** - Identifies the configuration profile. This name must be unique. Profile names are not case-sensitive.
 - **SSID** - The IEEE 802.11 wireless network name. This field has a maximum limit of 32 characters.
 - **PSW(Power Save Mode)**
 - **CAM(Constantly Awake Mode)** – Continuous Access Mode.

- **PSW(Power Saving Mode)** - Power Saving mode.
- **Network Type** – Displays the wireless mode, either Ad-hoc or Infrastructure mode
- **Preamble** – Specifies the preamble setting in 802.11b. The default setting is Auto Switch (access point mode), which allows both short and long headers in the 802.11b frames. The adapter can only use short radio headers if the access point supports and uses them.
- **RTS Threshold** – Default is 2312.
- **Fragment Threshold** – Default is 2312.
- **Ad-hoc mode** – Displays the wireless mode, either Only 802.11B or 802.11B/G mode.
- **Channel** – Shows the current channel in use. This field determines which operating frequency will be used.

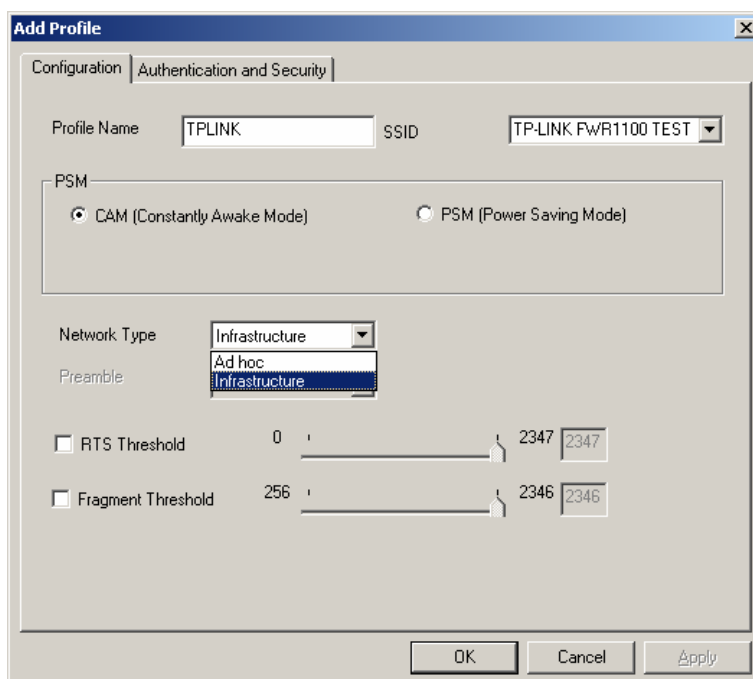


Figure 3-2 Add Profile - configuration

2. Edit the Authentication and Security tab

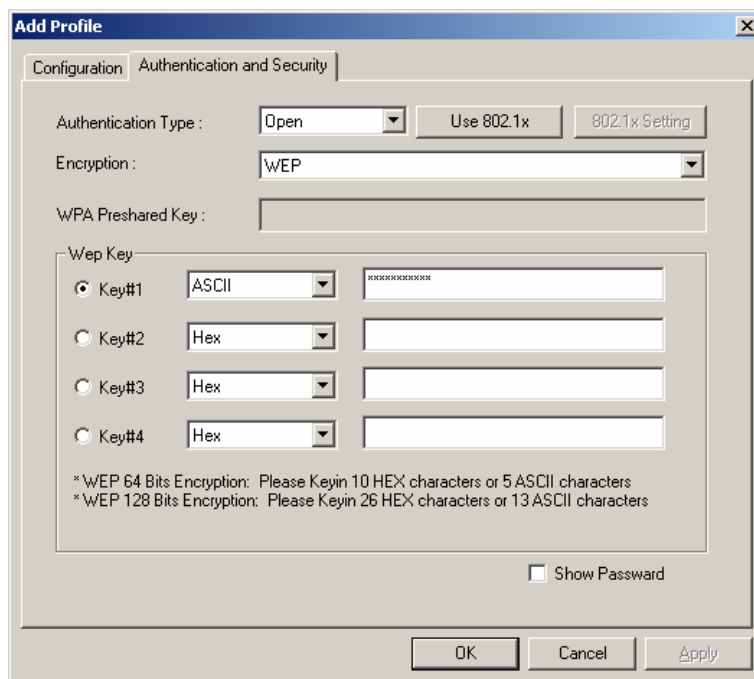


Figure 3-3 Add Profile – configuration

- **Authentication Type** – Three options, **Open System**, **Shared-Key System** or **LEAP**.
- **802.1x Setting** – It enables when Authentication Type is setting to WPA.
- **Encryption** – Displays which encryption type that the driver is using. When you select **Open System**, **Shared-Key System** as **Network Authentication**, there are two options: **WEP** and **Disabled**. If you select **WPA-PSK** as **Network Authentication**, there are **TKIP** and **AES** options instead of **WEP** and **Disabled**.
- **Wep Key** – Key #1, Key #2, Key #3, Key #4, the Key groups. You can enter 10 hexadecimal digits (any combination of 0-9, a-f, A-F) or 5 ASCII characters for 64-bit (also called 40bits) encryption. You can enter 26 hexadecimal digits (any combination of 0-9, a-f, A-F) or 13 ASCII characters for 128-bit (also called 104bits) encryption.

3.2 Link Status

The Link Status tab displays the adapter's current status.

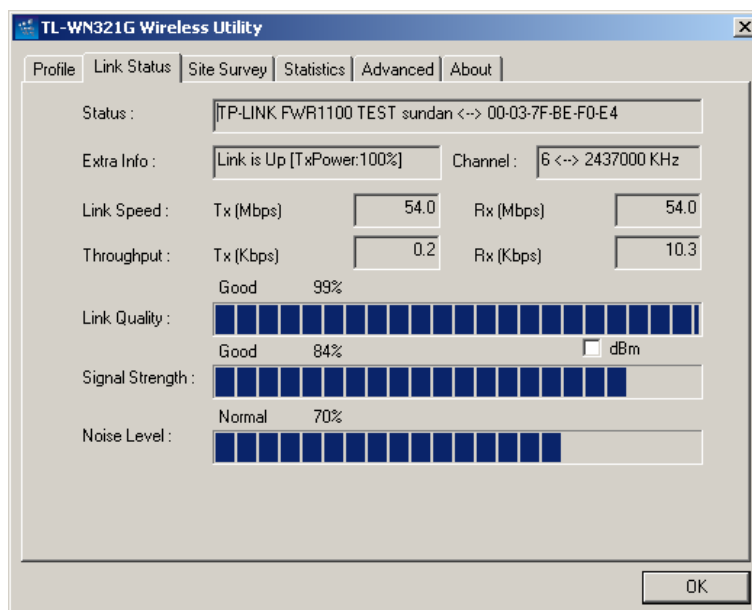


Figure 3-4 Link Status

The following table describes the items found on the Network Status screen.

- **Status** - Shows whether the station is connected to the wireless network, if not connected, display **RF is closed**; if connected, display AP name and BSSID.
- **Extra Info** - Shows link status and the current channel in use.
- **Link Speed** - Shows the current max Transfer rate, unit is Mbit/sec.
- **Throughput** - Displays Tx and Rx rate, unit is Kbits/sec.
- **Link Quality** - Shows the quality of the signal.
- **Signal Strength** - Shows the strength of the signal.

3.3 Site Survey

Click the **Site Survey** tab of the Utility and the **Site Survey** screen will appear, figure 3-5. On the **Site Survey** screen you can scan the Available Infrastructure and Ad Hoc Networks.

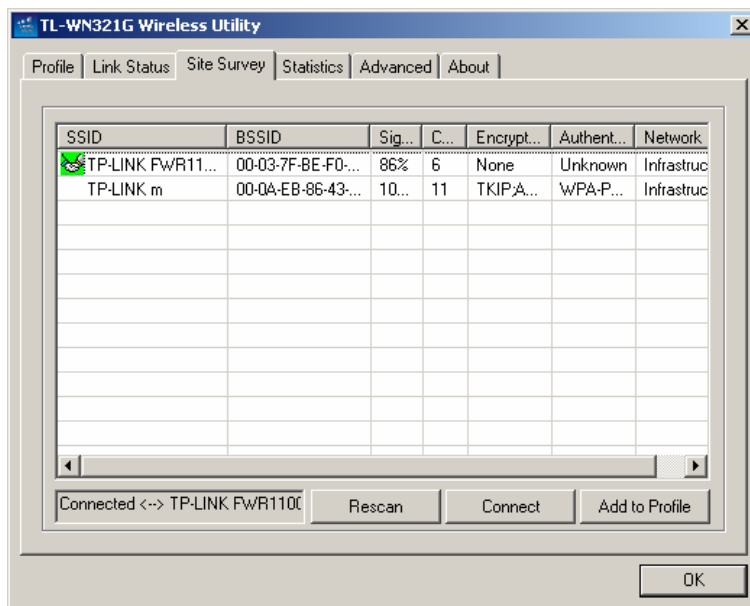


Figure 3-5 Site Survey tab

Click the **Rescan** button to refresh the list at any time. Highlight an SSID and click the **Connect** button to connect to an available network.

3.3 Statistics

The **Statistics** tab shows receiving and transmitting statistical information for the following receive and transmit diagnostics for frames received by or transmitted to the wireless network adapter. Click the **Reset Counter** button to reset the count of the statistics information.

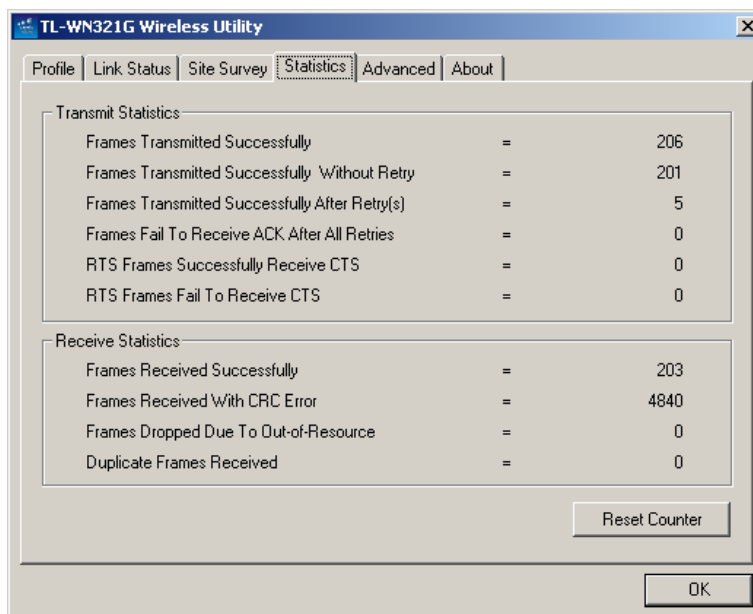


Figure 3-6 Statistics tab

3.4 Advanced

On this Screen, you can configure the WEP key or view the configured WEP key.

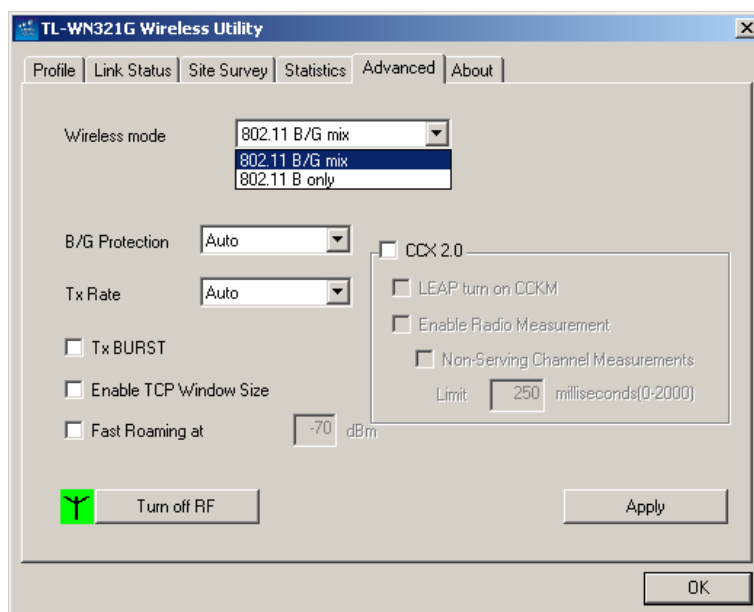


Figure 3-7 Advanced

- **Wireless mode** - Displays the wireless mode, either **802.11B/G mix** or **802.11B only**.
- **B/S Protection** - There are three options: either **Auto** or **Enable**, or **Close**.
- **TxRate** - Shows the current Transfer rate.
- **TxBURST** - It can translate more data when it enable.
- **Fast Roaming at** - Roaming will disable when Transmit Power is below some dBm.
- **Turn off RF** - The wireless radio of this adapter can be enabled or disabled. You can turn the wireless radio off by selecting the check-box.
- **Apply** - Click the **Apply** button to save the current setting.

3.5 About

This screen displays some information about this adapter, including Driver Date, Driver Version, Utility Date, Utility Version, MAC Address, IP Address, SubMask, Power Save mode and Preamble.

- **Utility Version** - The version of this utility.
- **Utility Date** - The creation date of this utility.
- **Driver Version** - The version of the wireless network adapter driver.
- **Driver Date** - The creation date of the wireless network adapter driver.
- **EEPROM Version** - The version of this EEPROM.
- **IP Address** - The IP address of the wireless network.
- **Phy_Address** - The MAC address of the wireless network adapter.
- **SubMask** - The subnet mask of the wireless network.

- **Default Gateway** - The default gateway of the wireless network.

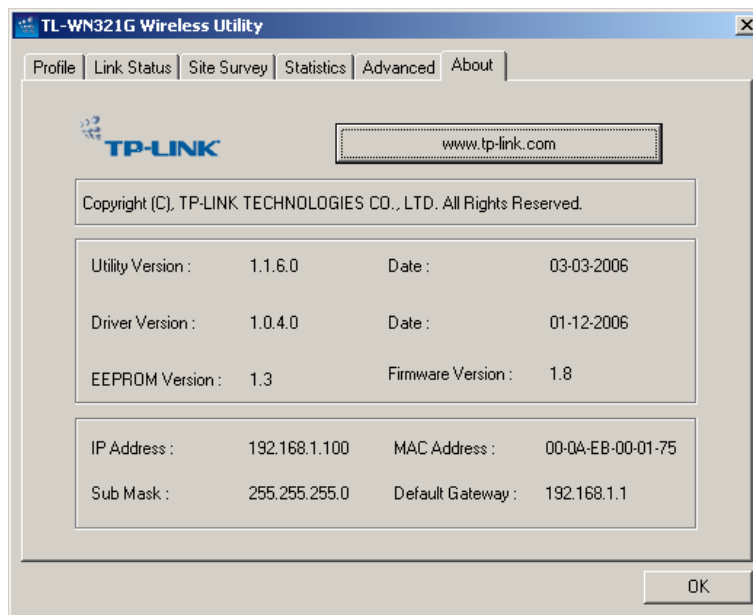


Figure 3-8 About

3.7 An example for application

Suppose you have an installed and using AP, the SSID is TPLINK and it adopts 64-bit encryption with the key 0123456789. To establish a connection with this AP, you should follow these steps below:

1. Launch TL-WN321G Wireless Utility.
2. Click the **Profile** tab of the utility and click the **New** button on the screen that appears.
3. The Profile configuration screen will appear, please enter *Test* for the Profile Name, *TPLINK* for the SSID, select *Infrastructure* for the Network Mode, select *WEP* for the Data Encryption and enter *0123456789* for Network key.
4. Click **OK** to save this profile.
5. Click **Apply** on the Profile screen. The utility will establish a connection with this AP by configured profile.

Appendix A: Specifications

Normal	
Interface	A-type USB 2.0 Connector
Standards	IEEE802.11b; IEEE802.11g
Operating System	Windows 98Se, Me, 2000, XP
Transmission Distance	In door up to 100m, out door up to 300m (it is limited to the environment).
Radio Data Rate	54/48/36/24/18/12/9/6Mbps or 11/5.5/3/2/1Mbps (Auto Rate Sensing)
Modulation	1M DBPSK; 2M DQPSK; 5.5M, 11M CCK; 6M, 9M, 12M, 18M, 24M, 36M, 48M, 54M OFDM;
Media Access Protocol	CSMA/CA with ACK
Transmit Power	22dBm (Typical)
Data Security	WPA; 64/128 BIT WEP; TKIP/AES; IEEE802.1x authentication
Frequency	2.4 ~ 2.4835GHz
Spread Spectrum	Direct Sequence Spread Spectrum (DSSS)
Power Consumption	Typically 480mA in full Transmit (TX), 420mA in full Receive (RX)
Safety & Emissions	FCC, CE

Physical Environmental	
Operating Temp	0°C~40°C (32°F~104°F)
Storage Temp	-40°C – 70°C (-40°F~158°F)
Humidity	10% - 95% RH, Non-condensing
Dimensions (W×D×H)	3.4×1.0×0.5 in. (86×26×12 mm)

Appendix B: Glossary

- **802.11b** - The 802.11b standard specifies a wireless networking at 11 Mbps using direct-sequence spread-spectrum (DSSS) technology and operating in the unlicensed radio spectrum at 2.4GHz, and WEP encryption for security. 802.11b networks are also referred to as Wi-Fi networks.
- **802.11g** - specification for wireless networking at 54 Mbps using direct-sequence spread-spectrum (DSSS) technology, using OFDM modulation and operating in the unlicensed radio spectrum at 2.4GHz, and backward compatibility with IEEE 802.11b devices, and WEP encryption for security.
- **Ad-hoc Network** - An ad-hoc network is a group of computers, each with a wireless adapter, connected as an independent 802.11 wireless LAN. Ad-hoc wireless computers operate on a peer-to-peer basis, communicating directly with each other without the use of an access point. Ad-hoc mode is also referred to as an Independent Basic Service Set (IBSS) or as peer-to-peer mode, and is useful at a departmental scale or SOHO operation.
- **DSSS (Direct-Sequence Spread Spectrum)** - DSSS generates a redundant bit pattern for all data transmitted. This bit pattern is called a chip (or chipping code). Even if one or more bits in the chip are damaged during transmission, statistical techniques embedded in the receiver can recover the original data without the need for retransmission. To an unintended receiver, DSSS appears as low power wideband noise and is rejected (ignored) by most narrowband receivers. However, to an intended receiver (i.e. another wireless LAN endpoint), the DSSS signal is recognized as the only valid signal, and interference is inherently rejected (ignored).
- **FHSS (Frequency Hopping Spread Spectrum)** - FHSS continuously changes (hops) the carrier frequency of a conventional carrier several times per second according to a pseudo-random set of channels. Because a fixed frequency is not used, and only the transmitter and receiver know the hop patterns, interception of FHSS is extremely difficult.
- **Infrastructure Network** - An infrastructure network is a group of computers or other devices, each with a wireless adapter, connected as an 802.11 wireless LAN. In infrastructure mode, the wireless devices communicate with each other and to a wired network by first going through an access point. An infrastructure wireless network connected to a wired network is referred to as a Basic Service Set (BSS). A set of two or more BSS in a single network is referred to as an Extended Service Set (ESS). Infrastructure mode is useful at a corporation scale, or when it is necessary to connect the wired and wireless networks.
- **Spread Spectrum** - Spread Spectrum technology is a wideband radio frequency technique developed by the military for use in reliable, secure, mission-critical communications systems. It is designed to trade off bandwidth efficiency for reliability,

integrity, and security. In other words, more bandwidth is consumed than in the case of narrowband transmission, but the trade off produces a signal that is, in effect, louder and thus easier to detect, provided that the receiver knows the parameters of the spread-spectrum signal being broadcast. If a receiver is not tuned to the right frequency, a spread-spectrum signal looks like background noise. There are two main alternatives, Direct Sequence Spread Spectrum (DSSS) and Frequency Hopping Spread Spectrum (FHSS).

- **SSID** - A **S**ervice **S**et **I**dentification is a thirty-two character (maximum) alphanumeric key identifying a wireless local area network. For the wireless devices in a network to communicate with each other, all devices must be configured with the same SSID. This is typically the configuration parameter for a wireless PC card. It corresponds to the ESSID in the wireless Access Point and to the wireless network name.
- **WEP (Wired Equivalent Privacy)** - A data privacy mechanism based on a 64-bit or 128-bit or 152-bit shared key algorithm, as described in the IEEE 802.11 standard.
- **Wi-Fi** - A trade name for the 802.11b wireless networking standard, given by the Wireless Ethernet Compatibility Alliance (WECA, see <http://www.wi-fi.net>), an industry standards group promoting interoperability among 802.11b devices.
- **WLAN (Wireless Local Area Network)** - A group of computers and associated devices communicate with each other wirelessly, which network serving users are limited in a local area.
- **WPA (Wi-Fi Protected Access)** - A wireless security protocol use TKIP (Temporal Key Integrity Protocol) encryption, which can be used in conjunction with a RADIUS server.

Appendix C: Contact Information

For help with the Installation or operation of the TP-LINK TL-WN321G Wireless Adapter, please contact us.

E-mail: support@tp-link.com

Website: <http://www.tp-link.com>

Free Manuals Download Website

<http://myh66.com>

<http://usermanuals.us>

<http://www.somanuals.com>

<http://www.4manuals.cc>

<http://www.manual-lib.com>

<http://www.404manual.com>

<http://www.luxmanual.com>

<http://aubethermostatmanual.com>

Golf course search by state

<http://golfingnear.com>

Email search by domain

<http://emailbydomain.com>

Auto manuals search

<http://auto.somanuals.com>

TV manuals search

<http://tv.somanuals.com>