

Installation

Note The product model shown in this QIG is TL-WN422G, as an example.

Note If you are running **Windows 2000**, please install the device by referring to the "**Installation Guide**" part of the User Guide on the included Resource CD.

1

For Windows XP

1 Installing Adapter Driver

Insert the adapter into an available USB slot on your computer. You may see the **Found New Hardware Wizard** when the adapter is plugged.

Note For TL-WN422G, it is highly recommended that the antenna should not be detached because poor performance will be delivered without it.

This is the default setup wizard of Windows XP. For a smoother installation, **please click "Cancel" and insert the provided TP-LINK resource CD.**



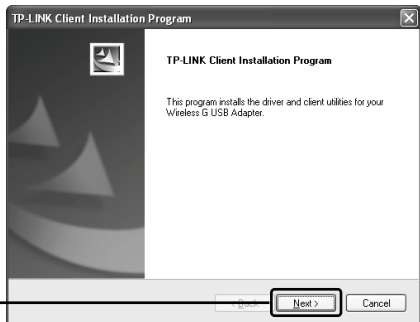
Click **Cancel**

After inserting the provided Resource CD into your CD-ROM drive, the Setup Wizard will automatically pop up on your computer's screen.

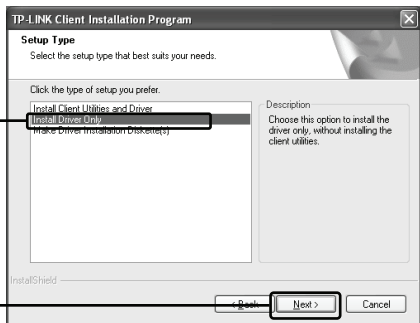
Choose **Driver(Win2000_XP)**



Click **Next**



Choose **Install Driver Only**

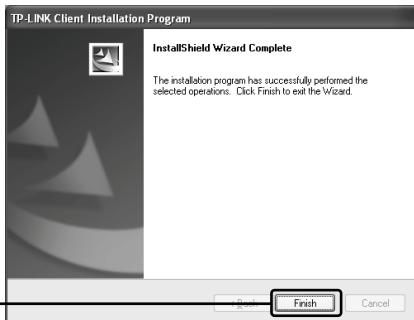


Click **Next**


Follow the step-by-step instructions to finish the driver installation.

If prompted to 'The software has not passed Windows Logo testing to verify its compatibility with Windows XP', click **Continue Anyway** to continue.

Click **Finish**



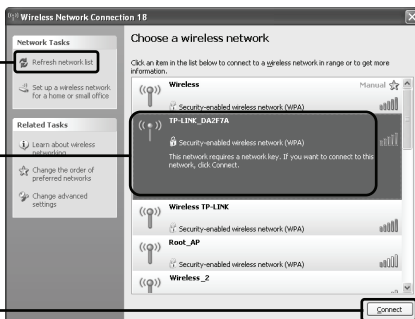
2 Connecting to the Wireless Router/Access Point

After you have successfully installed the driver software, the icon  will appear on the bottom right-hand corner of your desktop.

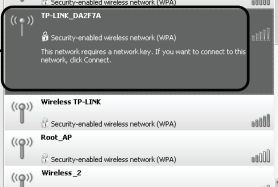
Click



Click **Refresh network list**



Select your network by the network name

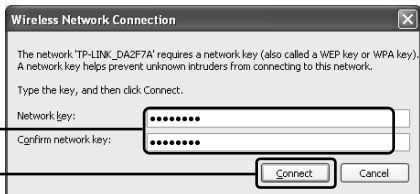


Click **Connect**



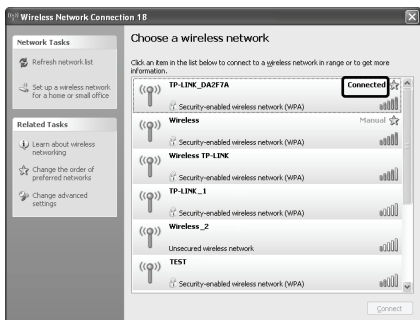
Input the Network key of your wireless network

Click **Connect**



Note If you don't know the wireless network key, please consult the network administrator or log on to the setup page of your Wireless Router/Access Point with an Ethernet cable to check the wireless security settings. Please refer to the manual of your Wireless Router/Access Point or consult the manufactory's technical support for more details.

You have now successfully connected to your wireless network.



Note If your network is an unsecured network, you will not be prompted to input the Network key. It will connect to your network automatically.

2

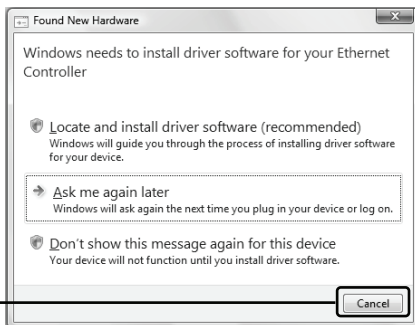
For Windows Vista

1 Installing Adapter Driver

Insert the adapter into an available USB slot on your computer. You may see the **Found New Hardware Wizard** when the adapter is plugged.

Note For TL-WN422G, it is highly recommended that the antenna should not be detached because poor performance will be delivered without it.

This is the default setup wizard of Windows Vista. For a smoother installation, **please click "Cancel" and insert the provided TP-LINK resource CD.**



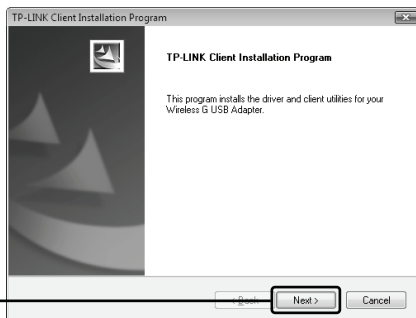
Click **Cancel**

After inserting the provided Resource CD into your CD-ROM drive, the Setup Wizard will automatically pop up on your computer's screen.



Choose **Driver(Vista)**

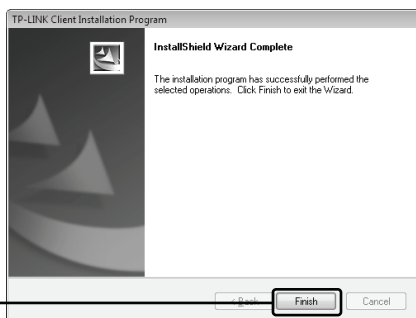
Click **Next**



Follow the step-by-step instructions to finish the driver installation.

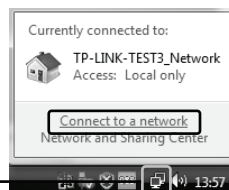
If prompted to 'Windows can't verify the publisher of this driver software', click **Install the driver software Anyway** to continue.

Click **Finish**



2 Connecting to the Wireless Router/Access Point

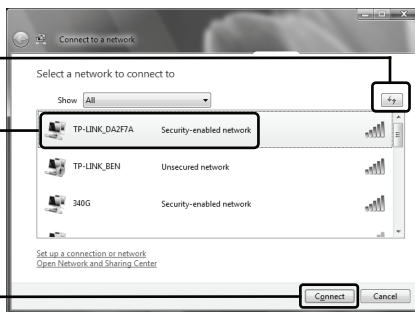
Click this icon at the bottom right of the desktop then click **Connect to a network**.



Click this button to refresh the network list

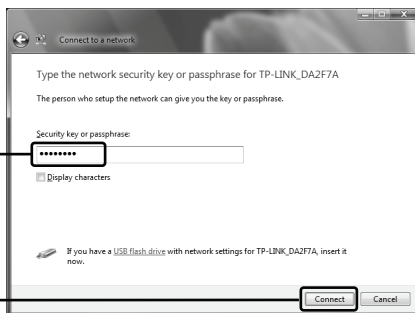
Select your network by the network name

Click **Connect**



Input the Network key of your wireless network

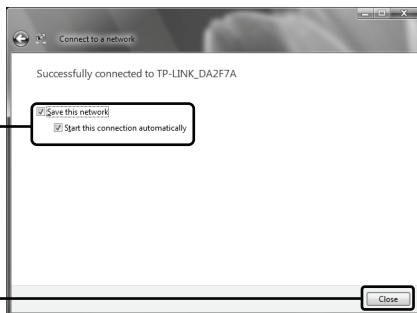
Click **Connect**



Note If you don't know the wireless network key, please consult the network administrator or log on to the setup page of your Wireless Router/Access Point with an Ethernet cable to check the wireless security settings. Please refer to the manual of your Wireless Router/Access Point or consult the manufactory's technical support for more details.

You have now successfully connected to your wireless network.

Save this network for automatically connecting



Click **Close**

Note If your network is an unsecured network, you will not be prompted to input the Network key. It will connect to your network automatically.

Technical Support

- For more troubleshooting help, go to:
www.tp-link.com/support/faq.asp
- To download the latest Firmware, Driver, Utility and User Guide, go to:
www.tp-link.com/support/download.asp
- For all other technical support, please contact us by using the following details:

Global

Tel: +86 755 26504400

E-mail : support@tp-link.com

Service time: 24hrs, 7days a week

Singapore

Tel: +65 62840493

E-mail: support.sg@tp-link.com

Service time: 24hrs, 7days a week

Germany / Austria / Switzerland

Tel :+49 1805 875465 (German

Service)

E-mail: support.de@tp-link.com

Service time: GMT+ 1 or GMT+ 2

(Daylight Saving Time in

Germany)

Except bank holidays in Hesse

Australia & New Zealand

Tel: AU 1300 87 5465

NZ 0800 87 5465

E-mail: support@tp-link.com.au

Service time: Monday to Friday

9:00 AM to 9:00 PM AEST

USA/Canada

Toll Free: +1 866 225 8139

E-mail: support.usa@tp-link.com

Service time: 24hrs, 7days a week

UK

Tel: +44 (0) 845 147 0017

E-mail: support.uk@tp-link.com

Service time: 24hrs, 7days a week

Free Manuals Download Website

<http://myh66.com>

<http://usermanuals.us>

<http://www.somanuals.com>

<http://www.4manuals.cc>

<http://www.manual-lib.com>

<http://www.404manual.com>

<http://www.luxmanual.com>

<http://aubethermostatmanual.com>

Golf course search by state

<http://golfingnear.com>

Email search by domain

<http://emailbydomain.com>

Auto manuals search

<http://auto.somanuals.com>

TV manuals search

<http://tv.somanuals.com>