

Quick Installation Guide

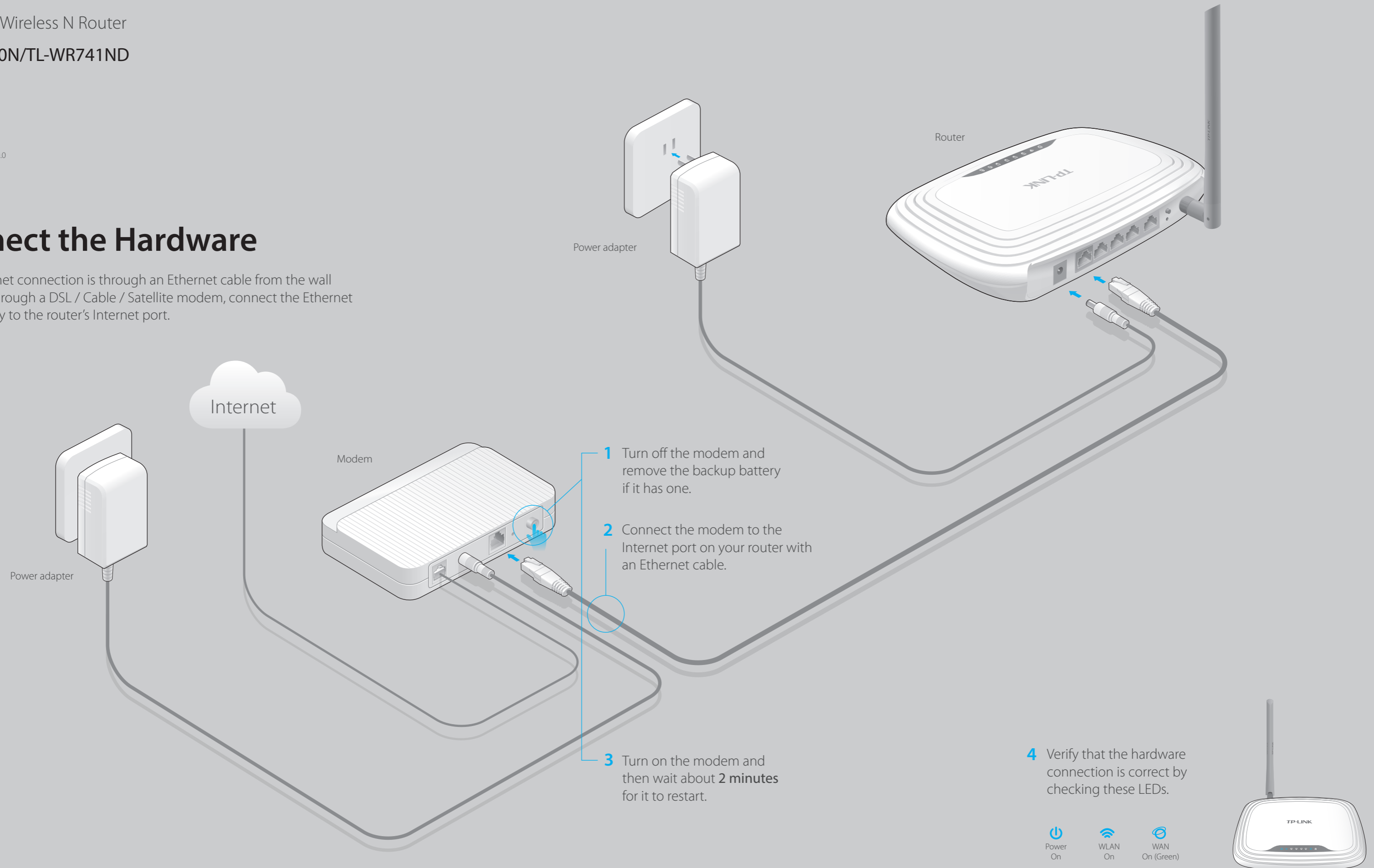
150Mbps Wireless N Router

TL-WR740N/TL-WR741ND

7106505508 REV6.0.0

Connect the Hardware

If your Internet connection is through an Ethernet cable from the wall instead of through a DSL / Cable / Satellite modem, connect the Ethernet cable directly to the router's Internet port.



- 1 Turn off the modem and remove the backup battery if it has one.
- 2 Connect the modem to the Internet port on your router with an Ethernet cable.
- 3 Turn on the modem and then wait about **2 minutes** for it to restart.

- 4 Verify that the hardware connection is correct by checking these LEDs.

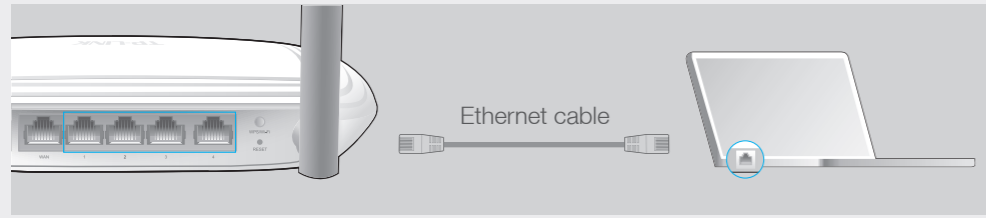


Configure the router

1. Connect your computer to the router (Wired or Wireless)

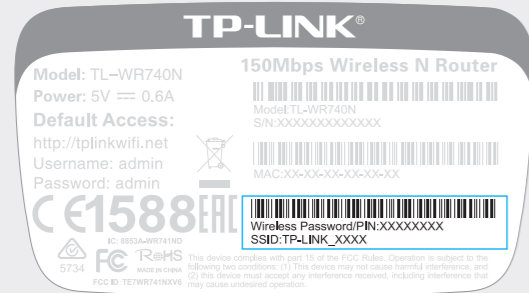
Wired

Turn off the Wi-Fi on your computer and connect the devices as shown below.



Wireless

Use the default network name (SSID) and wireless password printed on the product label at the bottom of the router to connect wirelessly.

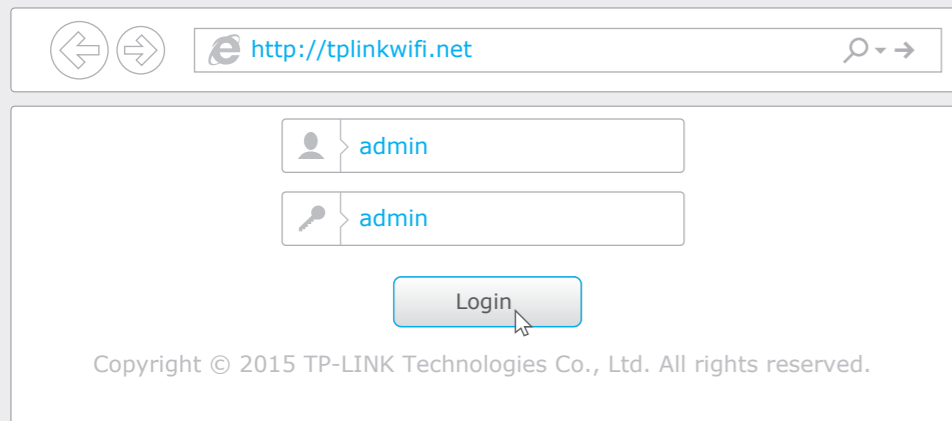


2. Configure the router with a web browser or the CD Setup Wizard

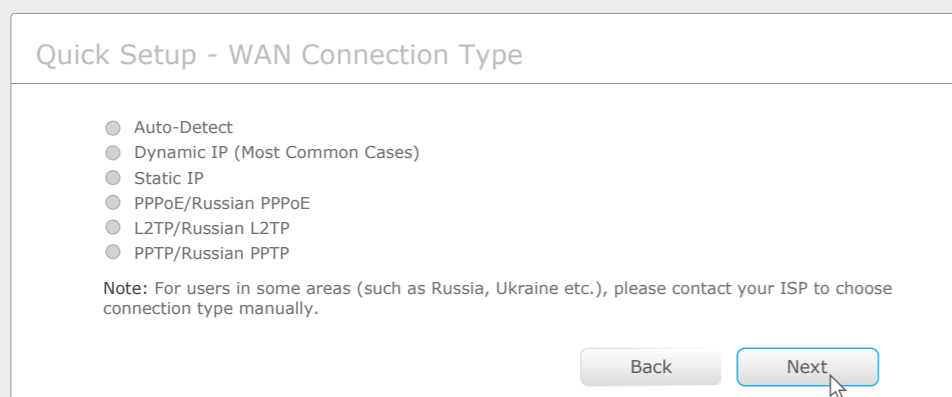
Option 1: via a web browser

A Enter <http://tplinkwifi.net> or <http://192.168.0.1> in the address bar of a web browser. Use **admin** for both user name and password, and then click on **Login**.

Note: If the login window does not appear, please refer to FAQ->Q1.

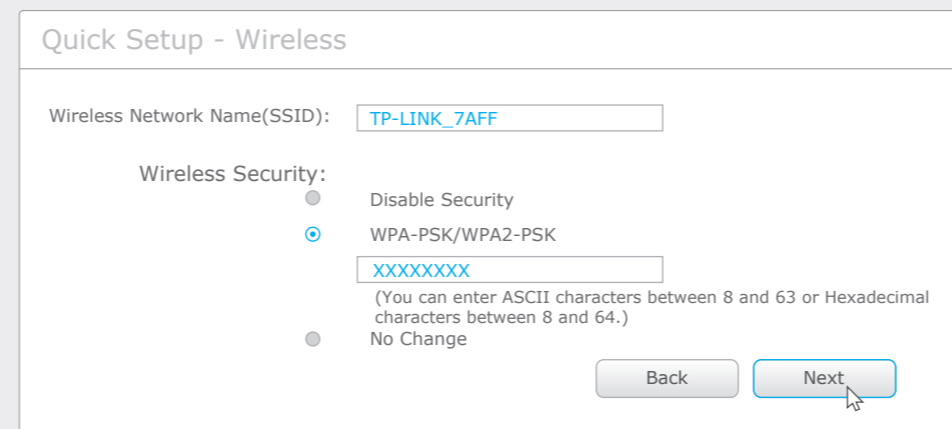


B Click **Quick Setup** on the left menu, and click **Next**. Select your specific **WAN connection type** or select **Auto-Detect** if you are unsure about it. Click **Next** and follow the instruction to continue.

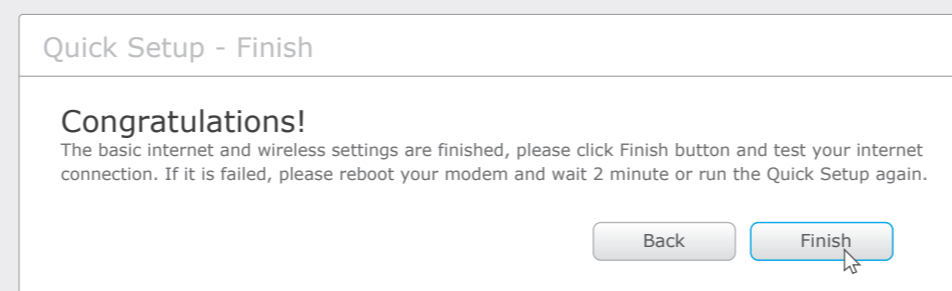


C Use the default or change the wireless settings, and click **Next**.

Note: If you change the default SSID and password, write down the new wireless settings.



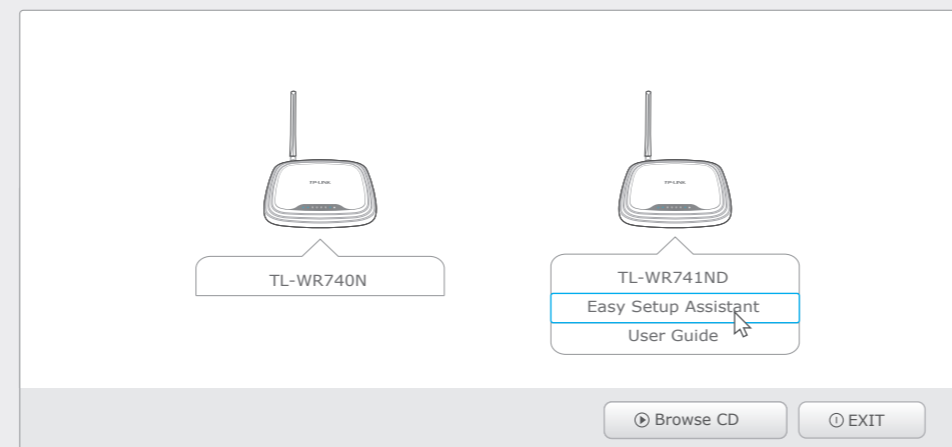
D Finish the configuration.



Option 2: via the CD Setup Wizard (For Windows users only)

Note: **Mac OS** and **Linux** users, please follow Option 1 to configure the router.

A Insert the resource CD and run the **Autorun.exe**. Select **TL-WR740N** or **TL-WR741ND** and click **Easy Setup Assistant**.



B Choose your language and click **START**. Follow the step-by-step screen instructions to complete the configuration.



Configure via Tether App

TP-LINK's Tether app lets you conveniently access the router and:

- View information about the clients on your network.
- Block network access from specific users or devices.
- Set up Parental Control with access time and content restrictions.
- Change the basic wireless network settings easily.

How to start?

- 1 Scan the QR code and download the TP-LINK Tether app from the Apple App Store or Google Play.
- 2 Ensure your smart device is wirelessly connected to the home network.
- 3 Launch the Tether app and start managing your home network.



FAQ (Frequently Asked Questions)

Q1. What can I do if the login window does not appear?

- If the computer is set to a static or fixed IP address, change the settings to obtain an IP address automatically.
- Verify if <http://tplinkwifi.net> or <http://192.168.0.1> is correctly entered in the web browser. Alternatively, enter <http://192.168.1.1> in the web browser and press Enter.
- Use another web browser and try again.
- Reboot your router and try again.
- Disable the network adapter used currently and then enable it again.

Q2. What can I do if I cannot access the Internet?

- Check if the Internet is working properly by connecting a computer directly to the modem via Ethernet cable. If not, contact your Internet Service Provider.
- Open a web browser, enter <http://tplinkwifi.net> or <http://192.168.0.1> and run the setup again.
- Reboot your router and try again.

Note: For cable modem users, reboot the modem first. If the problem still exists, log in to the Web Management page of the router, and go to **Network > MAC Clone**, click **Clone MAC Address** and then click **Save**.

Q3. How do I restore the router to its factory default settings?

- While the router is powered on, use a pin to press and hold the **RESET** button on the rear panel of the router for approximately 8 seconds.
- Log in to the Web Management page of the router, and go to **System tools > Factory Defaults**, click **Restore**, and then wait until the progress bar loading finished.

Q4. What can I do if I forget my web management page password?

- Refer to FAQ > Q3 to reset the router, and then use the default **admin** (all lowercase) for both username and password to log in.

Q5. What can I do if I forget my wireless network password?

- If you have not changed the default Wireless Password, it can be found on the product label of the router.
- If you have changed your password, log in to the router's Web Management page, go to **Wireless > Wireless Security** to obtain or reset your password.

Note: If your questions are not answered here, please refer to <http://www.tp-link.com/en/support/faq> and click Contact Technical Support for further assistance.

Free Manuals Download Website

<http://myh66.com>

<http://usermanuals.us>

<http://www.somanuals.com>

<http://www.4manuals.cc>

<http://www.manual-lib.com>

<http://www.404manual.com>

<http://www.luxmanual.com>

<http://aubethermostatmanual.com>

Golf course search by state

<http://golfingnear.com>

Email search by domain

<http://emailbydomain.com>

Auto manuals search

<http://auto.somanuals.com>

TV manuals search

<http://tv.somanuals.com>