

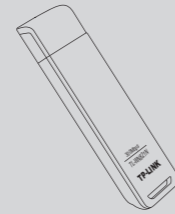
## Quick Installation Guide

Wireless N USB Adapter

MODEL NO. TL-WN821N/TL-WN721N/TL-WN722N

## Package Contents

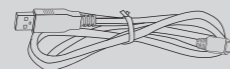
**Note** This Guide, shared by TL-WN821N, TL-WN721N and TL-WN722N, takes TL-WN821N for example.



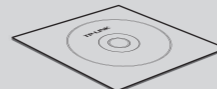
TL-WN821N



QIG



USB Cable



Resource CD

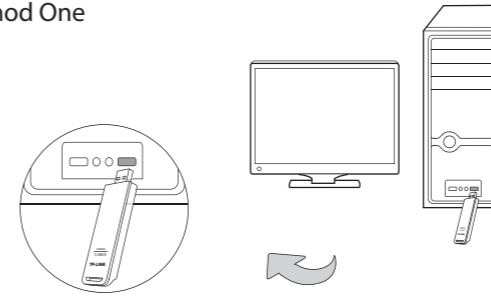
### System Requirement

· Windows 7    · Windows Vista    · Windows XP

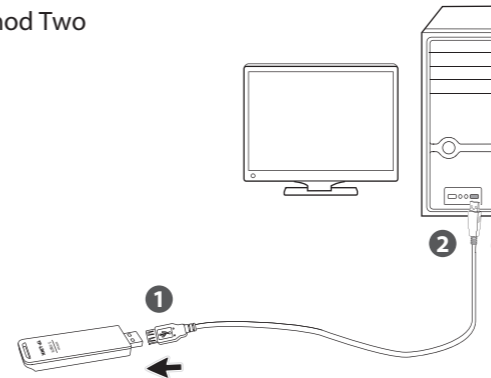
## 1 Hardware Connection

Connect the adapter and your computer with the provided USB cable.

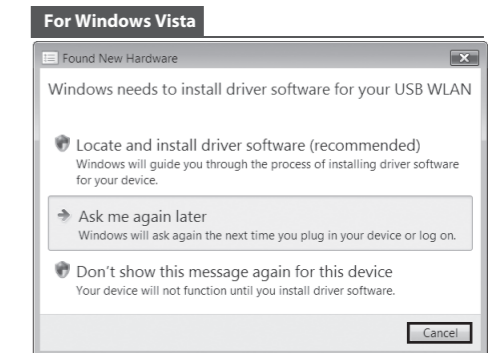
### Method One



### Method Two

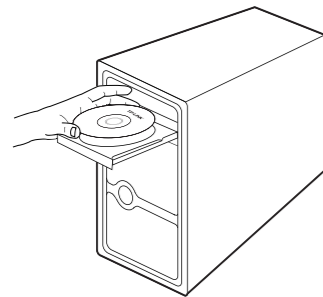


You may see the **Found New Hardware Wizard** after the adapter has been inserted. Please click **Cancel**.



## 2 Software Installation (The installation procedures in Windows 7/ Vista/ XP are similar. Here takes the procedures in Windows 7 for example.)

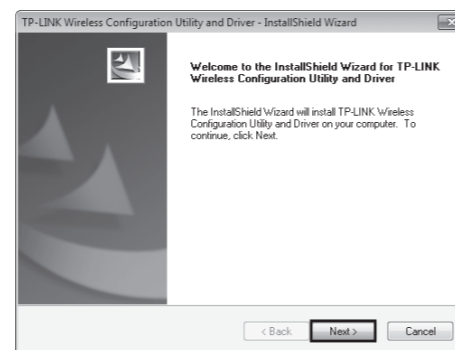
- 1 Insert the TP-LINK resource CD into the CD-ROM drive.



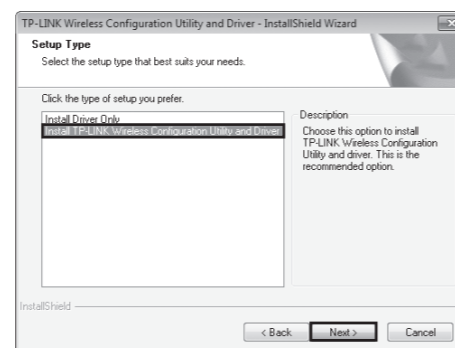
- 2 Find the appropriate model and choose **Install Driver&Utility**.



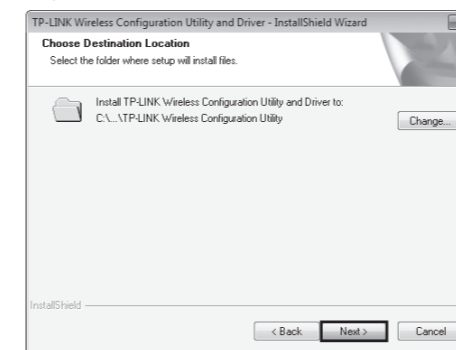
- 3 The **InstallShield Wizard** window will appear. Click **Next** to continue.



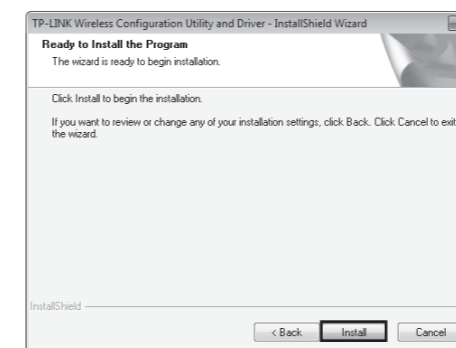
- 4 Select **Install TP-LINK Wireless Configuration Utility and Driver** and then click **Next**.



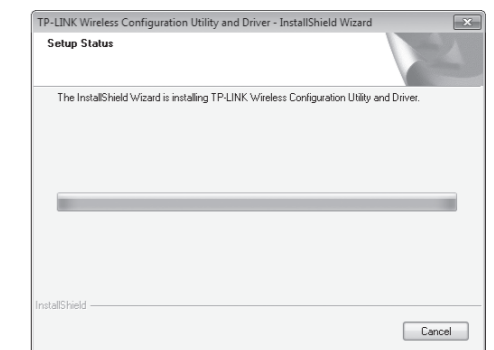
- 5 Click **Change** to specify the destination location or you can leave it default. Click **Next** to continue.



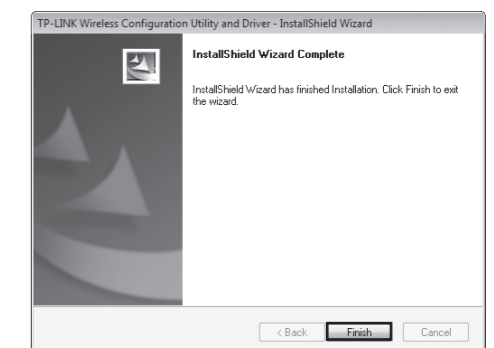
- 6 Click **Install** to install the driver and utility for your adapter.



- 7 The drivers and utility will install. This may take 1~2 minutes.



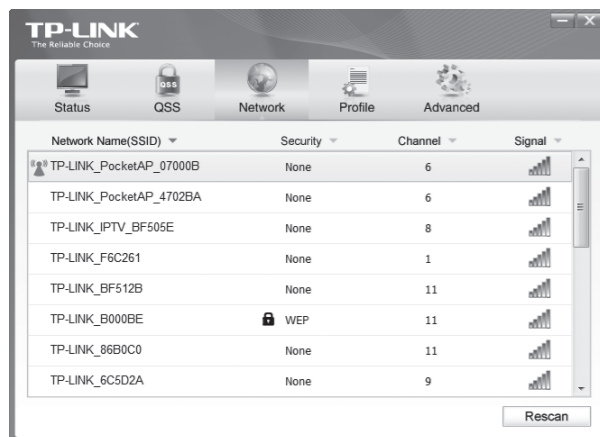
- 8 The following screen will then appear. Click **Finish** to complete the setup.



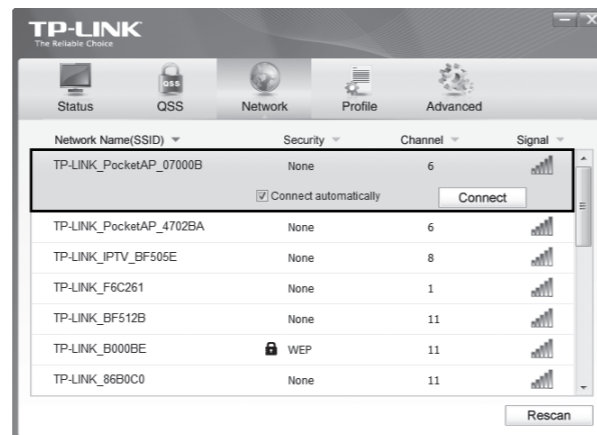
# 3 Connect to network

(You can skip to **Appendix: Connect to Wireless Router by QSS** to quickly connect to a network if your router or access point features QSS or WPS function.)

**1** After installation, the configuration page will pop up on your desktop.



**2** Click **Network** in the tools section to display a list of available wireless networks. Highlight the target network name (e.g. TP-LINK\_PocketAP\_07000B) and then click **Connect** to build a connection.



**3** If the network is unsecured, you will directly connect to it. If it is security-enabled, there are two ways to connect to it.

**Method One:**

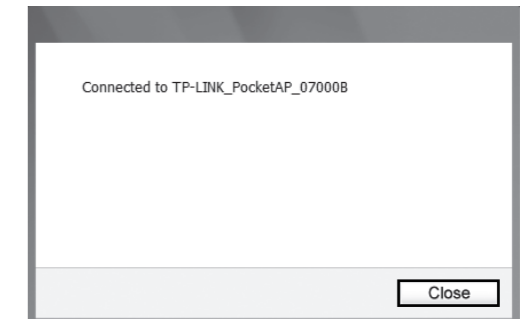
Input the security key into the field beside **Security Key** and click **OK** to continue.

**Method Two:**

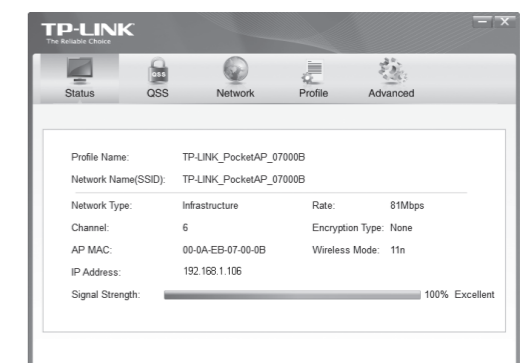
Without entering a key, push the QSS (other brands may call it WPS) button on your router if prompted to **You can also connect by pushing the button on the router** as shown below. Then click **OK** to continue.



**4** The following screen indicates successful connectivity. Click **Close** to enjoy the Internet.



**5** To view more information about the network connected, click **Status** in the tools section.

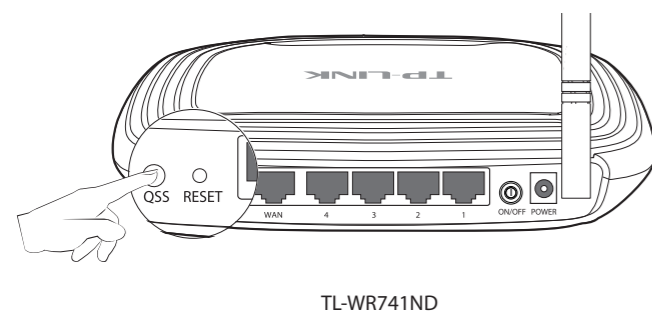


**Note** The icon will appear on your desktop. Double-clicking on the icon can also start the utility.

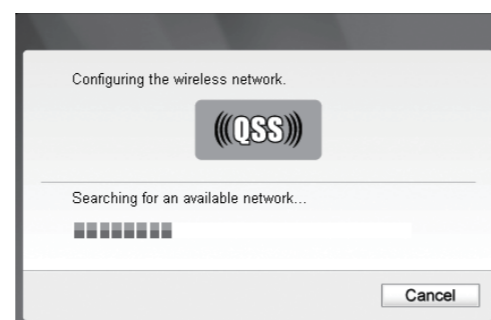
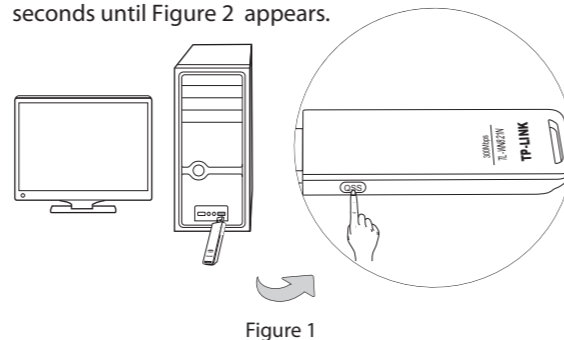
## Appendix: Connect to Wireless Router by QSS

If your wireless router features the QSS function (other brands may call it WPS), you can also set up a wireless connection in this way.

**1** Push the QSS button on the back panel of the Router. Here takes router TL-WR741ND for example.



**2** Press and hold the QSS button on the adapter for 2~3 seconds until Figure 2 appears.



**3** Wait for the connection progress to be completed. The following screen indicates successful connectivity. Click **OK** to finish the QSS connection.



**Note** For detailed instructions of QSS, please refer to the User Guide on the resource CD.

## Technical Support

- For more troubleshooting help, go to [www.tp-link.com/support/faq.asp](http://www.tp-link.com/support/faq.asp)
- To download the latest Firmware, Driver, Utility and User Guide, go to [www.tp-link.com/support/download.asp](http://www.tp-link.com/support/download.asp)
- For all other technical support, please contact us by using the following details:
 

<p><b>Global</b></p> <p>Tel: +86 755 26504400 E-mail: support@tp-link.com Service time: 24hrs, 7days a week</p>	<p><b>Australia &amp; New Zealand</b></p> <p>Tel: AU 1300 87 5465 NZ 0800 87 5465 E-mail: support@tp-link.com.au Service time: 24hrs, 7 days a week</p>
<p><b>Singapore</b></p> <p>Tel: +65 62840493 E-mail: support.sg@tp-link.com Service time: 24hrs, 7days a week</p>	<p><b>Indonesia</b></p> <p>Tel: (+62) 021 6259 135 E-mail: support.id@tp-link.com Service time: Monday to Friday 9:00 -12:00; 13:00 -18:00 * Except public holidays</p>
<p><b>UK</b></p> <p>Tel: +44 (0) 845 147 0017 E-mail: support.uk@tp-link.com Service time: 24hrs, 7days a week</p>	<p><b>Russian Federation</b></p> <p>Tel: 8 (495) 223-55-60 8 (800) 250-55-60 (toll-free call from any RF region) E-mail: support.ru@tp-link.com Service time: From 10:00 to 18:00 (Moscow time) *Except weekends and holidays in Russian Federation</p>
<p><b>USA/Canada</b></p> <p>Toll Free: +1 866 225 8139 E-mail: support.usa@tp-link.com Service time: 24hrs, 7days a week</p>	<p><b>Switzerland</b></p> <p>Tel: +41 (0)848 800998 (German service) E-mail: support.ch@tp-link.com Fee: 4-8 Rp/min, depending on rate of different time Service time: Monday to Friday 9:00 AM to 6:00 PM. GMT+1 or GMT+2 (Daylight Saving Time)</p>
<p><b>Malaysia</b></p> <p>Tel: 1300 88 875465 (1300 88TPLINK) E-mail: support.my@tp-link.com Service time: 24 hrs a day, 7days a week</p>	<p><b>Germany / Austria</b></p> <p>Tel: +49 1805 875465 (German Service) / +49 1805 TPLINK E-mail: support.de@tp-link.com Fee: 0.14 EUR/min from the German fixed phone network and up to 0.42 EUR/min from mobile phone. Service time: Monday to Friday 9:00 AM to 6:00 PM. GMT+1 or GMT+2 (Daylight Saving Time in Germany) * Except bank holidays in Hesse</p>
<p><b>Italy</b></p> <p>Tel: +39 02 66987799 E-mail: support.it@tp-link.com Service time: Monday to Friday 9:00 AM to 6:00 PM, from Monday to Friday</p>	<p><b>Turkey</b></p> <p>Tel: 444 19 25 (Turkish Service) E-mail: support.tr@tp-link.com Service time: 9:00 AM to 6:00 PM, 7days a week</p>

## Free Manuals Download Website

<http://myh66.com>

<http://usermanuals.us>

<http://www.somanuals.com>

<http://www.4manuals.cc>

<http://www.manual-lib.com>

<http://www.404manual.com>

<http://www.luxmanual.com>

<http://aubethermostatmanual.com>

Golf course search by state

<http://golfingnear.com>

Email search by domain

<http://emailbydomain.com>

Auto manuals search

<http://auto.somanuals.com>

TV manuals search

<http://tv.somanuals.com>