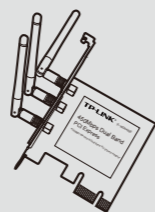


Quick Installation Guide

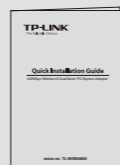
450Mbps Wireless N Dual Band PCI Express Adapter

MODEL NO. TL-WDN4800

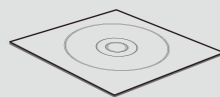
Package Contents



TL-WDN4800



QIG

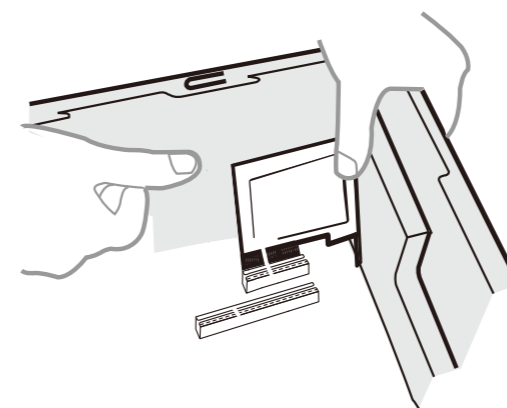


Resource CD

System Requirement

· Windows 7 · Windows Vista · Windows XP

1 Hardware Connection



Steps:

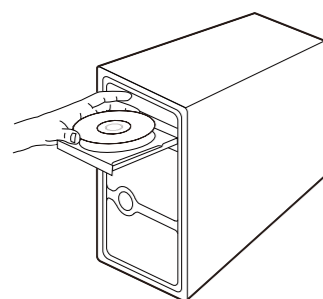
1. Turn off your computer and unplug the power cord from the computer.
2. Open the case. Locate an available PCI Express slot and remove its slot cover. Keep the screw.
3. Insert the adapter into the PCI Express slot as shown above.
4. Secure the adapter with the screw removed in Step 2.
5. Close the case and insert the power cord back into the computer.
6. Turn on your computer.

You may see the **Found New Hardware Wizard** after the adapter has been inserted. Please click **'Cancel'**.

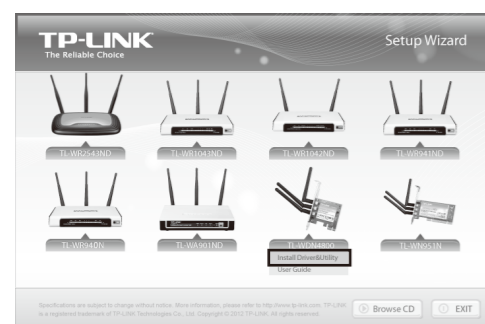


2 Software Installation (The installation procedures in Windows 7/ Vista/ XP are similar. Here takes the procedures in Windows 7 for example.)

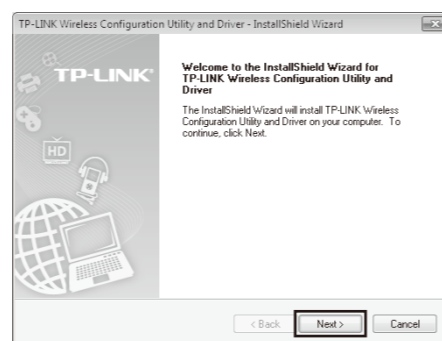
1. Insert the TP-LINK Resource CD into the CD-ROM drive.



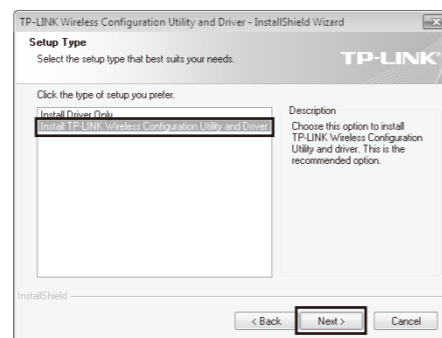
2. Find the model TL-WDN4800 and select **Install Driver&Utility**.



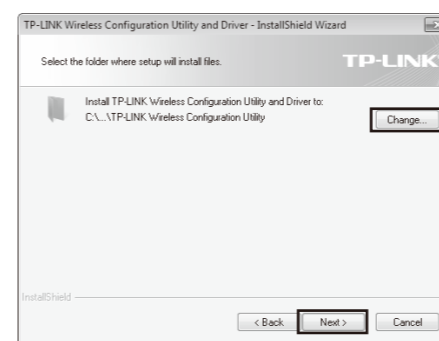
3. The **InstallShield Wizard** window will appear. Click **Next** to continue.



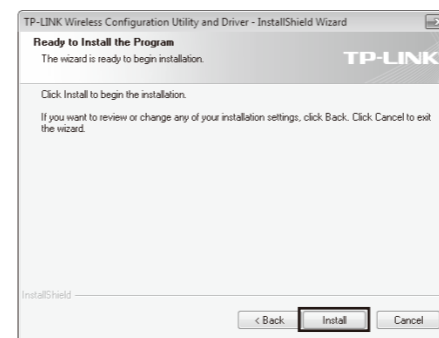
4. Select **Install TP-LINK Wireless Configuration Utility and Driver** and then click **Next**.



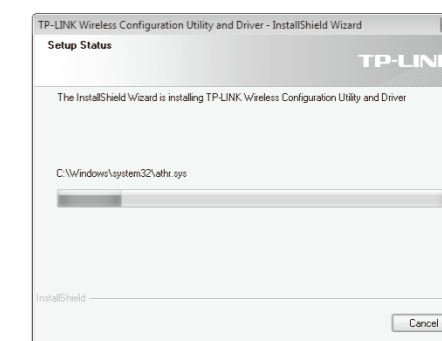
5. Click **Change** to specify the destination location or you can leave it default. Click **Next** to continue.



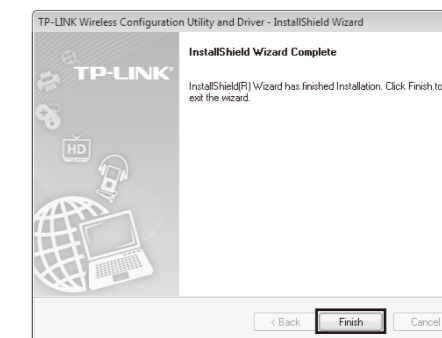
6. Click **Install** to install the driver and utility for your adapter.



7. The installation process may take 1~2 minutes.

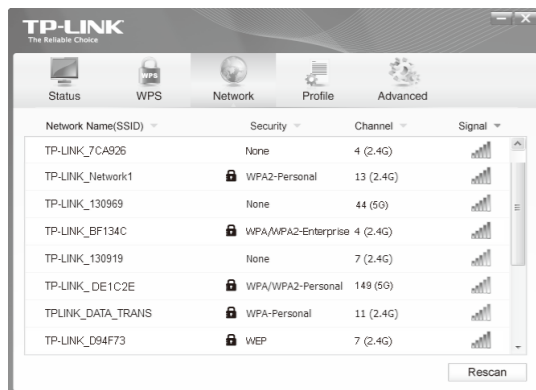


8. The following screen will then appear. Click **Finish** to complete the setup.



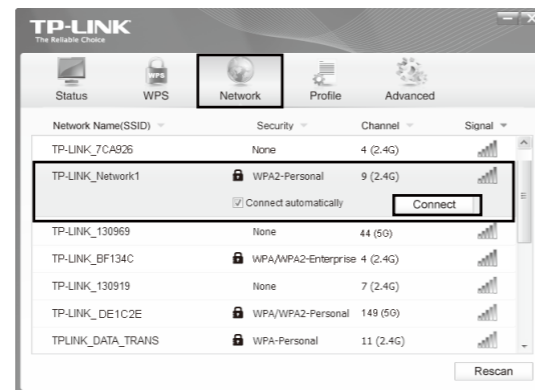
3 Connect to Network (You can skip to **Appendix: Connect to Wireless Router by WPS** to quickly connect to a network if your Router or Access Point features WPS or QSS function.)

1 After installation, the configuration page will pop up on your desktop.



Note The icon will appear on your desktop. Double-clicking on the icon can start the utility.

2 Click **Network** in the tools section to display a list of available wireless networks. Highlight the target network name (e.g. TP-LINK_Network1) and then click **Connect** to build a connection.



Note Here we only choose a wireless network with the security type of **WPA/WPA2-Personal** as an example to elaborate the following steps. If you want to know more about the connection to a wireless network with the security type of **WPA/WPA2-Enterprise**, please refer to the User Guide on the resource CD included.

3 If the network is unsecured, you will directly connect to it. If it is secured (with WPA/WPA2-Personal), there are two ways to connect to it.

Method One:

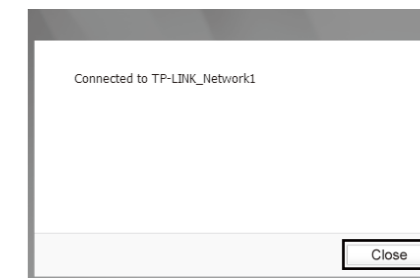
Input the password into the **Security Key** field and then click **OK** to continue.

Method Two:

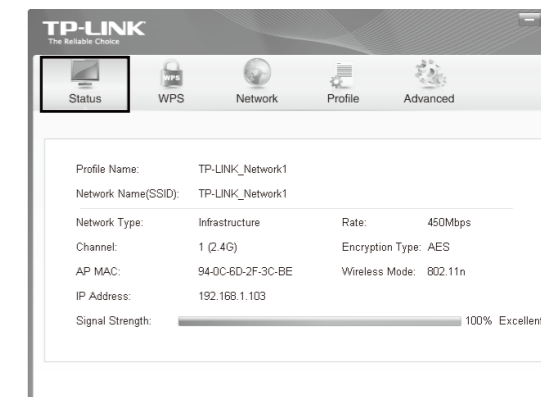
Without entering a key, push the WPS or QSS button on your Router as hinted "You can also connect by pushing the button on the router". Then click **OK** to continue.



4 The following screen indicates successful connectivity. Click **Close** to enjoy the Internet.



5 To view more information about the network connected, click **Status** in the tools section.

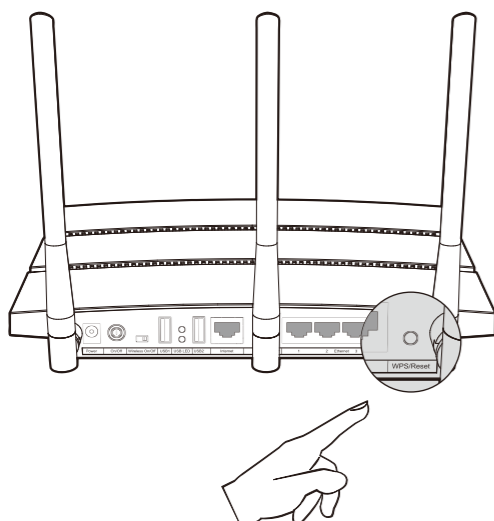


Appendix: Connect to Wireless Router by WPS

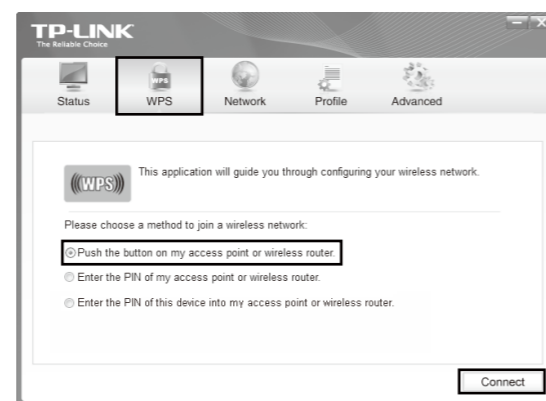
If your wireless Router features the WPS or QSS function, you can also set up a wireless connection in this way.

Note For more configuration methods of WPS, please refer to the User Guide on the Resource CD.

1 Push the WPS or QSS button on the Router. Here takes Router TL-WDR4300 for example; push the **WPS/Reset** button for 2~3 seconds.

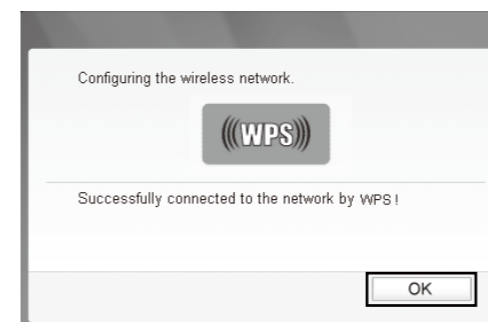


2 Launch the configuration utility and click **WPS** in the tools section. Select **Push the button on my access point or wireless router** and then click **Connect**.



Note The third option "Enter the PIN of this device into my access point or wireless router" is available in OS Windows XP and Windows Vista, but not in Windows 7.

3 Wait for the connection process to complete. The following screen indicates successful connectivity. Click **OK** to finish the WPS connection.



Technical Support

- For more troubleshooting help, go to www.tp-link.com/en/support/faq
 - To download the latest Firmware, Driver, Utility and User Guide, go to <http://www.tp-link.com/en/support/download/>
 - For all other technical support, please contact us by using the following details:
- | | |
|--|---|
| <p>Global
Tel: +86 755 26504400
E-mail: support@tp-link.com
Service time: 24hrs, 7 days a week</p> <p>Singapore
Tel: +65 62840493
E-mail: support.sg@tp-link.com
Service time: 24hrs, 7 days a week</p> <p>UK
Tel: +44 (0) 845 147 0017
E-mail: support.uk@tp-link.com
Service time: 24hrs, 7days a week</p> <p>Ukraine
Tel: 0-800-505-508
E-mail: support.ua@tp-link.com
Service time: Monday to Friday 14:00 PM to 22:00 PM</p> <p>Brazil
Toll Free: 0800-770-4337 (Portuguese Service)
E-mail: support.br@tp-link.com
Service time: Monday to Saturday 08:00 AM to 08:00 PM</p> <p>Italy
Tel: +39 02 66987799
E-mail: support.it@tp-link.com
Service time: Monday to Friday, 9:00 AM to 6:00 PM</p> <p>Indonesia
Tel: (+62) 021 6259 135
E-mail: support.id@tp-link.com
Service time: Monday to Friday 9:00 -12:00 ; 13:00 -18:00 (Except public holidays)</p> <p>Germany / Austria
Tel: +49 1805 875465 (German Service) +49 1805 TPLINK
E-mail: support.de@tp-link.com
Fee: 0.14 EUR/min from the German fixed phone network and up to 0.42 EUR/min from mobile phone.
Service Time: Monday to Friday, 9:00 AM to 6:00 PM, GMT+1 or GMT+2 (Daylight Saving Time in Germany)
* Except bank holidays in Hesse</p> | <p>Australia / New Zealand
Tel: AU 1300 87 5465
NZ 0800 87 5465
E-mail: support.au@tp-link.com (AU) support.nz@tp-link.com (NZ)
Service time: 24hrs, 7 days a week</p> <p>Turkey
Tel: 444 19 25 (Turkish Service) NZ 0800 87 5465
E-mail: support.tr@tp-link.com
Service time: 9:00 AM to 6:00 PM, 7days a week</p> <p>USA / Canada
Toll Free: +1 866 225 8139
E-mail: support.usa@tp-link.com
Service time: 24hrs, 7days a week</p> <p>Malaysia
Tel: 1300 88 875465 (1300 88TPLINK)
E-mail: support.my@tp-link.com
Service time: 24hrs, 7days a week</p> <p>Poland
Tel: +48 (0) 801 080 618 / +48 22 7217563 (if calls from mobile phone)
E-mail: support.pl@tp-link.com
Service time: Monday to Friday 9:00 AM to 5:00 PM, GMT+1 or GMT+2 (Daylight Saving Time)</p> <p>Switzerland
Tel: +41 (0)848 800998 (German Service)
E-mail: support.ch@tp-link.com
Fee: 4-8 Rp/min, depending on rate of different time
Service time: Monday to Friday 9:00 AM to 6:00 PM, GMT+1 or GMT+2 (Daylight Saving Time)</p> <p>France
Tel: +33 (0) 820 800 860 (French service)
Email: support.fr@tp-link.com
Fee: 0.118 EUR/min from France
Service time: Monday to Friday 9:00 AM to 6:00 PM (Except French Bank holidays)</p> <p>Russian Federation
Tel: 8 (499) 754-55-60 / 8 (800) 250-55-60 (toll-free call from any RF region)
E-mail: support.ru@tp-link.com
Service time: From 10:00 to 18:00 (Moscow time)
*Except weekends and holidays in Russian Federation</p> |
|--|---|

Free Manuals Download Website

<http://myh66.com>

<http://usermanuals.us>

<http://www.somanuals.com>

<http://www.4manuals.cc>

<http://www.manual-lib.com>

<http://www.404manual.com>

<http://www.luxmanual.com>

<http://aubethermostatmanual.com>

Golf course search by state

<http://golfingnear.com>

Email search by domain

<http://emailbydomain.com>

Auto manuals search

<http://auto.somanuals.com>

TV manuals search

<http://tv.somanuals.com>