





Quick Installation Guide  

TV-IP602WN

1.01

Table of Contents

English	1
1. Before You Start	1
2. Hardware Installation and Configuration	2
.....	
Troubleshooting	8
Wireless Tips	9



Package Contents

- TV-IP602WN
- CD-ROM (Utility and User's Guide)
- Multi-Language Quick Installation Guide
- 2 x 2dbi Detachable Antennas
- Network Cable (1.5m/5ft.)
- Mounting Kit
- Power Adapter (12V DC, 1.5A)

System Requirements

- A computer with a wired network adapter properly installed.
- CD-ROM Drive
- VGA Resolution: 800 x 600 or above
- Web Browser: Internet Explorer (6.0 or higher)
- Wireless Router (e.g. TEW-691GR)
- An available DHCP Server –routers usually have a built-in DHCP server

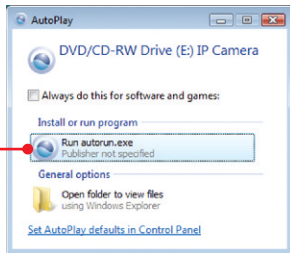
Supported Operating Systems	CPU	Memory
Windows 7 (32/64-bit)	1.3GHz or above	1GB RAM or above
Windows Vista (32/64-bit)	1.3GHz or above	512MB RAM or above
Windows XP (32/64-bit)	1.3GHz or above	256MB RAM or above

2. Hardware Installation and Configuration

Note: It is recommended that you configure the IP Camera from a wired computer.

1. Insert the Utility CD-ROM into your CD-ROM drive.

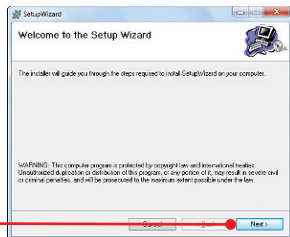
2. Click **Run autorun.exe** (Windows 7/Vista only).



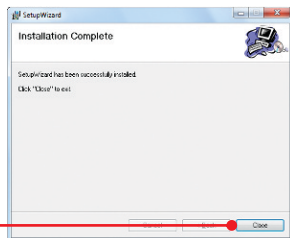
3. Click **Setup Wizard**.



4. Click **Next**. Then follow the **Setup Wizard** instructions.



5. Click **Close**.



ENGLISH

FRANÇAIS

DEUTSCH

ESPAÑOL

РУССКИЙ

6. Double click on the **SetupWizard** icon on your desktop.



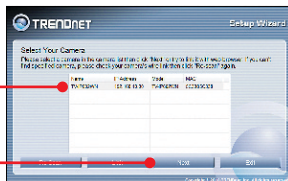
7. Connect the provided network cable from one of your Router's network ports to the Ethernet port on the IP Camera.

8. Connect the Power Adapter to the IP Camera and then to a power outlet.

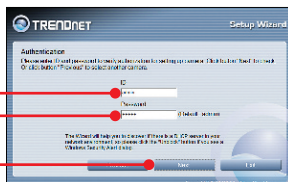
9. Click **Next**.



10. Select the IP camera and click **Next**. Verify that the MAC address listed matches the MAC address on your IP camera. The MAC address is listed on the bottom of the TV-IP602WN . Click **Re-Scan** if no cameras are detected.



11. Enter your ID and password. Then click **Next**.
By default:
ID: admin
Password: admin



12. Configure the **Camera Name** and **Camera Time**. Click **Copy Local Time** to automatically configure the Camera Time to match your computer. Then click **Next**.



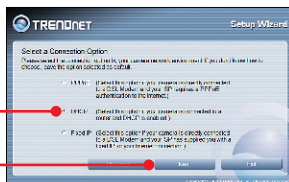
13. If you would like to change the administrator password, click **Change Password**, enter a new password, retype the new password and then click **Next**. Leave **Change Password** unchecked if you do not wish to change the password.



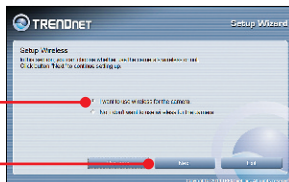
Note:

1. Setting a password prevents other users from accessing the TV-IP602WN's configuration.
2. It is recommended that you enter a new password. If you decide to change this setting, please write down the new password.
3. Password is limited to up to 8 characters.

14. Select **DHCP** and then click **Next**.



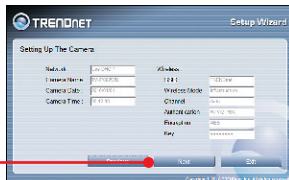
15. Click **I want to use wireless for the camera** and then click **Next**.



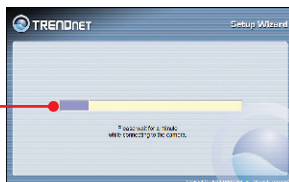
16. Select your wireless network from the **Available AP** dropdown list. If your wireless network does not appear, manually enter the SSID of your wireless network. If you have Encryption enabled, select the **Authentication**, select the **Encryption** and enter your **Key**. Then click **Next**.



17. Click **Next**.



18. Please wait while the settings on your cameras are being saved.



19. Select **By using wireless** and then click **Next**.

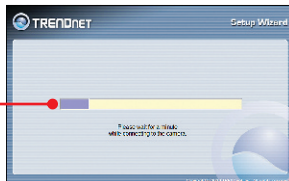


20. Disconnect the RJ-45 cable. Verify that the **LINK (RED)** LED is lit and then click **Next**.



Note: The TV-IP602WN will not work wirelessly until you disconnect the Ethernet cable from the back of the camera.

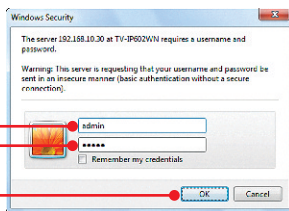
21. Please wait while the settings on your cameras are being saved.



22. Click on the following URL or click **Link** to open up the browser configuration.



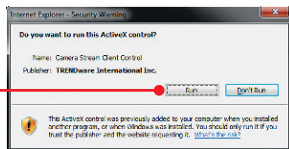
23. Enter the User name and Password, and then click **OK**. By default:
User Name: **admin**
Password: **admin**



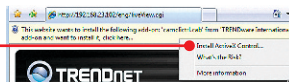
24. Right click on the information bar and select **Install This Add-on for All Users on This Computer...** (Internet Explorer 8)



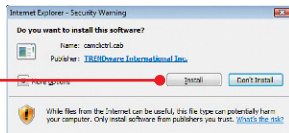
25. Click **Install**. (Internet Explorer 8)



26. Right click on the information bar and select **Install ActiveX Control** (Internet Explorer 6/7).



27. Click **Install** (Internet Explorer 6/7).

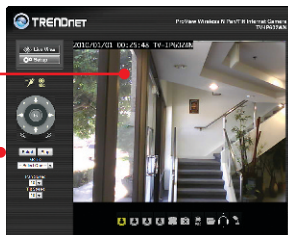


28. Live Video will now appear.

29. Use the command icons to control the IP camera

30. Unplug the power adapter and disconnect the TV-IP602WN from your computer. Place the TV-IP602WN in your desired location. Please refer to the Wireless Tips section for optimal placement of the TV-IP602WN .

31. Plug the power adapter back into the TV-IP602WN .



Your installation is complete

1. For detailed information regarding the TV-IP602WN configuration and advanced settings, please refer to the Troubleshooting section, User's Guide on the Utility CD-ROM, or TRENDnet's website at <http://www.trendnet.com>.
2. If you would like to use IPViewPro 2.0 software, please install the software by clicking Install IPView Pro 2.0 in the Autorun window and refer to the User's Guide on the CD for more information.

Register Your Product

To ensure the highest level of customer service and support, please take a moment to register your product Online at: www.trendnet.com/register

Thank you for choosing TRENDnet

1. I inserted the Utility CD-ROM into my computer's CD-ROM Drive but the installation menu does not appear automatically. What should I do?

1. For Windows 7, if the installation menu does not appear automatically, click on the Windows Icon on the bottom left hand corner of the screen., click the "Search programs and files" box, and type D:\autorun.exe, where "D" in "D:\autorun.exe" is the letter assigned to your CD-ROM Drive, and then press the ENTER key on your keyboard .
2. For Windows Vista, if the installation menu does not appear automatically, click Start, click the Start Search box, and type D:\autorun.exe where "D" in "D:\autorun.exe" is the letter assigned to your CD-ROM Drive, and then press the ENTER key on your keyboard.
3. For Windows XP, if the window does not appear automatically, click Start, click Run and type D:\autorun.exe where "D" in "D:\autorun.exe" is the letter assigned to your CD-ROM Drive, and then press the ENTER key on your keyboard.

2. Setup Wizard is unable to detect my camera. What should I do?

1. Verify that you have followed all the steps in Section 2: Hardware Installation.
2. Disable any software firewall programs such as ZoneAlarm or Norton Internet Security. If you are using Windows 7, Vista or XP disable the built in firewall.
3. Click on **Re-scan** in the Setup Wizard.
4. Take a pin or paper clip. Then press on the Reset button on the back on the IP Camera for 10 seconds, then let go.

3. I do not have a DHCP server or DHCP is disabled on my network and I am unable to configure the TV-IP602WN. What should I do?

1. Go to the TCP/IP settings on your computer and assign a static IP address on your computer's network adapter in the subnet of 192.168.10.x. Since the default IP address of the TV-IP602WN is 192.168.10.30, do not assign a static IP address of 192.168.10.30 on your computer's network adapter.
2. Open Internet Explorer and enter <http://192.168.10.30> into the address bar.

4. The Image is blurry. How can I adjust the focus on the Internet camera?

You can adjust the Internet Camera's focus by rotating the lens.

5. When I click on Live View the image does not load?

1. Make sure that you are using a browser that supports Active X.
2. Make sure that ActiveX is installed. See steps 25 to 28 in Section 2: **Hardware Installation and Configuration**.

6. How do I connect the TV-IP602WN to my wireless router or access point?

Make sure that you configure the camera to have the same SSID, encryption mode and key (if enabled). Follow the instructions in section 2 to configure the camera with the SSID and encryption key.

7. After I successfully configured the TV-IP602W to match my wireless network settings, I can not connect to the camera.

1. Verify that the wireless settings match your wireless network settings.
2. Verify in the wireless section of the browser configuration that the **Enable Wireless** option is checked.
3. Make sure to disconnect the Ethernet cable from the camera and verify that the **LINK** LED is blinking red.
4. Please refer to the Wireless tips section if you continue to have wireless connectivity problems.

8. I forgot my password. What should I do?

Take a pin or paperclip and press the reset button on the back of the unit for 15 seconds. This will return settings back to factory defaults. Open up the SetupWizard program to find out the IP address of the camera (see step 11 in Section 2: **Hardware Installation and Configuration**). If you do not have a DHCP server on your network, the default IP address is 192.168.10.30. The default administrator ID and password is admin.

If you still encounter problems or have any questions regarding the **TV-IP602WN**, please contact TRENDnet's Technical Support Department.

The following are some general wireless tips to help minimize the impact of interference within an environment.

Assign your network a unique SSID

Do not use anything that would be identifying like "Smith Family Network". Choose something that you would easily identify when searching for available wireless networks.

Do not turn off the SSID broadcast

The SSID broadcast is intended to be on and turning it off can cause connectivity issues. The preferred method of securing a wireless network is to choose a strong form of encryption with a strong and varied encryption key.

Note: after setting up the SSID, encryption type and encryption key/passphrase, please make a note of them for future reference. You will need this information to connect your wireless computers to the wireless router/access point.

Change the channel

Most wireless access points and routers are defaulted to channel 6. If you have a site survey tool that will display the channels you can plan your channel selection around neighboring access points to minimize interference from them. If your site survey tool does not display the channel try using channels 1 or 11.

If using 802.11n you should be securing the network with WPA2 security.

Note: Due to Wi-Fi certification considerations if you choose WEP, WPA or WPA2-TKIP encryption this device may operate in legacy wireless mode (802.11b/g). You may not get 802.11n performance as these forms of encryption are not supported by the 802.11n specification.

Please also make sure that the wireless hardware is not placed in any type of shelving or enclosures.

Avoid stacking hardware on top of each other to prevent overheating issues. Maintain enough free space around the hardware for good ventilation and airflow. There should also be plenty of free space around the antennas to allow the wireless signal to propagate.

There are a number of other environmental factors that can impact the range of wireless devices.

1. Adjust your wireless devices so that the signal is traveling in a straight path, rather than at an angle. The more material the signal has to pass through the more signal you will lose.
2. Keep the number of obstructions to a minimum. Each obstruction can reduce the range of a wireless device. Position the wireless devices in a manner that will minimize the amount of obstructions between them.
3. Building materials can have a large impact on your wireless signal. In an indoor environment, try to position the wireless devices so that the signal passes through less dense material such as dry wall. Dense materials like metal, solid wood, glass or even furniture may block or degrade the signal.
4. Antenna orientation can also have a large impact on your wireless signal. Use the wireless adapter's site survey tool to determine the best antenna orientation for your wireless devices.
5. Interference from devices that produce RF (radio frequency) noise can also impact your signal. Position your wireless devices away from anything that generates RF noise, such as microwaves, HAM radios, Walkie-Talkies and baby monitors.
6. Any device operating on the 2.4GHz frequency will cause interference. Devices such as 2.4GHz cordless phones or other wireless remotes operating on the 2.4GHz frequency can potentially drop the wireless signal. Although the phone may not be in use, the base can still transmit wireless signal. Move the phone's base station as far away as possible from your wireless devices.

If you are still experiencing low or no signal consider repositioning the wireless devices or installing additional access points. The use of higher gain antennas may also provide the necessary coverage depending on the environment.

Declaration of Conformity



Company Information:

Company Name:
TRENDnet, Inc.

Company Address:
20675 Manhattan Place
Torrance, CA 90501
USA

Product Information:

Product Description:
ProView Wireless N Pan/Tilt/Zoom Internet Camera



Model Number:
TV-IP602WN

Brand name:
TRENDnet

Technical Standards:

EN 300 328	V1.7.1 : 2006
EN 301 489-1	V1.8.1 : 2008
EN 301 489-17	V2.1.1 : 2009
EN 55022	2006 + A1 : 2007
EN 55024	1998 + A1 : 2001 + A2 : 2003
EN 61000-3-2	2006
EN 61000-3-3	2006
EN 60950-1	2006+ A11 : 2009

Declaration:

The product is herewith confirmed to comply with the requirements of Directive 1999/5/EC of the Council (European Parliament) on the radio and telecommunications terminal equipment and Energy-related products Directive 2009/125/EC.

I hereby declare that the products and devices mentioned above are consistent with the standards and provisions of the guidelines.

Sonny Su

Full Name

March 4, 2011

Date

Director of Technology

Position / Title

Signature

GPL/LGPL General Information

This TRENDnet product includes free software written by third party developers. These codes are subject to the GNU General Public License ("GPL") or GNU Lesser General Public License ("LGPL"). These codes are distributed WITHOUT WARRANTY and are subject to the copyrights of the developers. TRENDnet does not provide technical support for these codes. The details of the GNU GPL and LGPL are included in the product CD-ROM.

Please also go to (<http://www.gnu.org/licenses/gpl.txt>) or (<http://www.gnu.org/licenses/lgpl.txt>) for specific terms of each license.

The source codes are available for download from TRENDnet's web site (http://trendnet.com/downloads/list_gpl.asp) for at least three years from the product shipping date.

You could also request the source codes by contacting TRENDnet.

20675 Manhattan Place, Torrance, CA 90501, USA. Tel: +1-310-961-5500 Fax: +1-310-961-5511

Informations générales GPL/LGPL

Ce produit TRENDnet comprend un logiciel libre écrit par des programmeurs tiers. Ces codes sont sujet à la GNU General Public License ("GPL" Licence publique générale GNU) ou à la GNU Lesser General Public License ("LGPL" Licence publique générale limitée GNU). Ces codes sont distribués SANS GARANTIE et sont sujets aux droits d'auteurs des programmeurs. TRENDnet ne fournit pas d'assistance technique pour ces codes. Les détails concernant les GPL et LGPL GNU sont repris sur le CD-ROM du produit.

Veuillez également vous rendre en (<http://www.gnu.org/licenses/gpl.txt>) ou en (<http://www.gnu.org/licenses/lgpl.txt>) pour les conditions spécifiques de chaque licence.

Les codes source sont disponibles au téléchargement sur le site Internet de TRENDnet web site

(http://trendnet.com/downloads/list_gpl.asp) durant au moins 3 ans à partir de la date d'expédition du produit.

Vous pouvez également demander les codes source en contactant TRENDnet.

20675 Manhattan Place, Torrance, CA 90501, USA. Tel: +1-310-961-5500 Fax: +1-310-961-5511

Allgemeine Informationen zu GPL/LGPL

Dieses Produkt enthält die freie Software "nfilter/iptables" (© 2000-2004 nfilter project <http://www.nfilter.org>) und die freie Software „Linux „mtd“ (Memory Technology Devices) Implementation (© 2000 David Woodhouse), erstmals integriert in Linux Version 2.4.0-test 3 v. 10.07.2000 (<http://www.kernel.org/pub/linux/kernel/v2.4/old-test-kernels/linux-2.4.0-test3.tar.bz2>), sowie weitere freie Software. Sie haben durch den Erwerb dieses Produktes keinerlei Gewährleistungsansprüche gegen die Berechtigten an der oben genannten Software erworben; weil diese die Software kostenfrei lizenzieren gewähren sie keine Haftung gemäß unten abgedruckten Lizenzbedingungen. Die Software darf von jedermann im Quell- und Objektcode unter Beachtung der Lizenzbedingungen der GNU General Public License Version 2, und GNU Lesser General Public License (LGPL) vervielfältigt, verbreitet und verarbeitet werden. Die Lizenz ist unten im englischsprachigen Originalwortlaut wiedergegeben. Eine nichtoffizielle Übersetzung in die deutsche Sprache finden Sie im Internet unter (<http://www.gnu.de/documents/gpl-2.0.de.html>). Eine allgemeine öffentliche GNU Lizenz befindet sich auch auf der mitgelieferten CD-ROM.

Sie können Quell- und Objektcode der Software für mindestens drei Jahre auf unserer Homepage www.trendnet.com im Downloadbereich (http://trendnet.com/langen/downloads/list_gpl.asp) downloadend. Sofern Sie nicht über die Möglichkeit des Downloads verfügen können Sie bei TRENDnet.

20675 Manhattan Place, Torrance, CA 90501 -U.S.A -, Tel.: +1-310-961-5500, Fax: +1-310-961-5511 die Software anfordern.

Información general sobre la GPL/LGPL

Este producto de TRENDnet incluye un programa gratuito desarrollado por terceros. Estos códigos están sujetos a la Licencia pública general de GNU ("GPL") o la Licencia pública general limitada de GNU ("LGPL"). Estos códigos son distribuidos SIN GARANTÍA y están sujetos a las leyes de propiedad intelectual de sus desarrolladores. TRENDnet no ofrece servicio técnico para estos códigos. Los detalles sobre las licencias GPL y LGPL de GNU se incluyen en el CD-ROM del producto.

Consulte también el (<http://www.gnu.org/licenses/gpl.txt>) ó el (<http://www.gnu.org/licenses/lgpl.txt>) para ver las cláusulas específicas de cada licencia.

Los códigos fuentes están disponibles para ser descargados del sitio Web de TRENDnet

(http://trendnet.com/downloads/list_gpl.asp) durante por lo menos tres años a partir de la fecha de envío del producto.

También puede solicitar el código fuente llamando a TRENDnet.

20675 Manhattan Place, Torrance, CA 90501, USA. Tel: +1-310-961-5500 Fax: +1-310-961-5511

Общая информация о лицензиях GPL/LGPL

В состав данного продукта TRENDnet входит бесплатное программное обеспечение, написанное сторонними разработчиками. Это ПО распространяется на условиях лицензий GNU General Public License ("GPL") или GNU Lesser General Public License ("LGPL"). Программы распространяются БЕЗ ГАРАНТИИ и охраняются авторскими правами разработчиков. TRENDnet не оказывает техническую поддержку этого программного обеспечения. Подробное описание лицензий GNU GPL и LGPL можно найти на компакт-диске, прилагаемом к продукту.

В пунктах (<http://www.gnu.org/licenses/gpl.txt>) и (<http://www.gnu.org/licenses/lgpl.txt>) изложены конкретные условия каждой из лицензий.

Исходный код программ доступен для загрузки с веб-сайта TRENDnet (http://trendnet.com/downloads/list_gpl.asp) в течение, как минимум, трех лет со дня поставки продукта.

Кроме того, исходный код можно запросить по адресу TRENDnet.

20675 Manhattan Place, Torrance, CA 90501, USA. Tel: +1-310-961-5500 Fax: +1-310-961-5511

Download from www.SoftManuals.com - All Manuals Search And Download.

GPL/LGPL informações Gerais

Este produto TRENDnet inclui software gratuito desenvolvido por terceiros. Estes códigos estão sujeitos ao GPL (GNU General Public License) ou ao LGPL (GNU Lesser General Public License). Estes códigos são distribuídos SEM GARANTIA e estão sujeitos aos direitos autorais dos desenvolvedores. TRENDnet não presta suporte técnico a estes códigos. Os detalhes do GNU GPL e do LGPL estão no CD-ROM do produto.

Favor acessar <http://www.gnu.org/licenses/gpl.txt> ou <http://www.gnu.org/licenses/lgpl.txt> para os termos específicos de cada licença.

Os códigos fonte estão disponíveis para download no site da TRENDnet (http://trendnet.com/langen/downloads/list_gpl.asp) por pelo menos três anos da data de embarque do produto.

Você também pode solicitar os códigos fonte contactando TRENDnet, 20675 Manhattan Place, Torrance, CA 90501, USA. Tel: +1-310-961-5500, Fax: +1-310-961-5511.

GPL/LGPL üldinformatsioon

See TRENDneti toode sisaldab vaba tarkvara, mis on kirjutatud kolmanda osapoole poolt. Koodid on allutatud GNU (General Public License) Üldise Avaliku Litsentsi (GPL) või GNU (Lesser General Public License) ("LGPL") Vähem Üldine Avalik Litsentsiga. Koode vahendatakse ILMA GARANTIITA ja need on allutatud arendajate poolt. TRENDnet ei anna koodidele tehnilist tuge. Detailsemat infot GNU GPL ja LGPL kohta leiate toote CD-ROMil. Infot mõlema litsentsi spetsiifiliste terminite kohta leiate (<http://www.gnu.org/licenses/gpl.txt>) või (<http://www.gnu.org/licenses/lgpl.txt>).

Infot mõlema litsentsi spetsiifiliste terminite kohta leiate (<http://www.gnu.org/licenses/gpl.txt>) või (<http://www.gnu.org/licenses/lgpl.txt>). Lähtekoodi on võimalik alla laadida TRENDneti kodulehelt

(http://trendnet.com/langen/downloads/list_gpl.asp) kolme aasta jooksul alates toote kättesaamise kuupäevast.

Samuti võite lähtekoodi paluda TRENDneti'lt, 20675 Manhattan Place, Torrance, CA 90501, USA. Tel: +1-310-961-5500, Fax: +1-310-961-5511.

Certifications

This equipment has been tested and found to comply with FCC and CE Rules.

Operation is subject to the following two conditions:

- (1) This device may not cause harmful interference.
- (2) This device must accept any interference received. Including interference that may cause undesired operation.



Waste electrical and electronic products must not be disposed of with household waste. Please recycle where facilities exist. Check with you Local Authority or Retailer for recycling advice.



NOTE: THE MANUFACTURER IS NOT RESPONSIBLE FOR ANY RADIO OR TV INTERFERENCE CAUSED BY UNAUTHORIZED MODIFICATIONS TO THIS EQUIPMENT. SUCH MODIFICATIONS COULD VOID THE USER'S AUTHORITY TO OPERATE THE EQUIPMENT.

ADVERTENCIA

En todos nuestros equipos se mencionan claramente las características del adaptador de alimentación necesario para su funcionamiento. El uso de un adaptador distinto al mencionado puede producir daños físicos y/o daños al equipo conectado. El adaptador de alimentación debe operar con voltaje y frecuencia de la energía eléctrica domiciliar existente en el país o zona de instalación.



Product Warranty Registration

Please take a moment to register your product online.
Go to TRENDnet's website at <http://www.trendnet.com/register>

Free Manuals Download Website

<http://myh66.com>

<http://usermanuals.us>

<http://www.somanuals.com>

<http://www.4manuals.cc>

<http://www.manual-lib.com>

<http://www.404manual.com>

<http://www.luxmanual.com>

<http://aubethermostatmanual.com>

Golf course search by state

<http://golfingnear.com>

Email search by domain

<http://emailbydomain.com>

Auto manuals search

<http://auto.somanuals.com>

TV manuals search

<http://tv.somanuals.com>