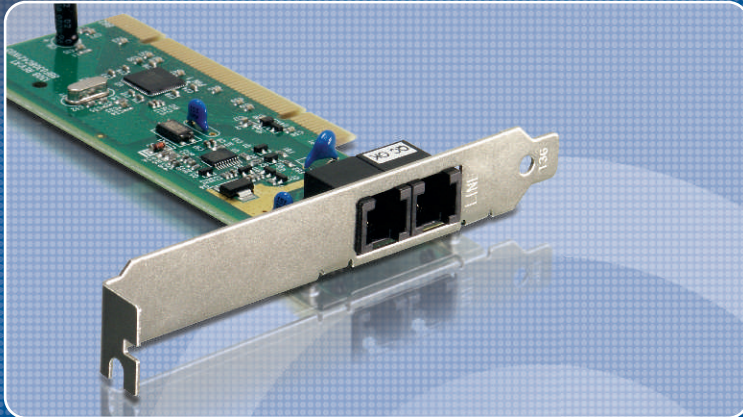




TRENDnet



Quick Installation Guide

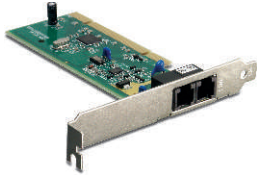


TFM-PCIV92

Table of Contents

English	1
1. Before You Start	1
2. How to Install	2
3. Verify Installation	5
Русский	6
1. Что нужно сделать в самом начале	6
2. Порядок установки	7
3. Проверка результатов установки	10
Troubleshooting	11

1. Before You Start



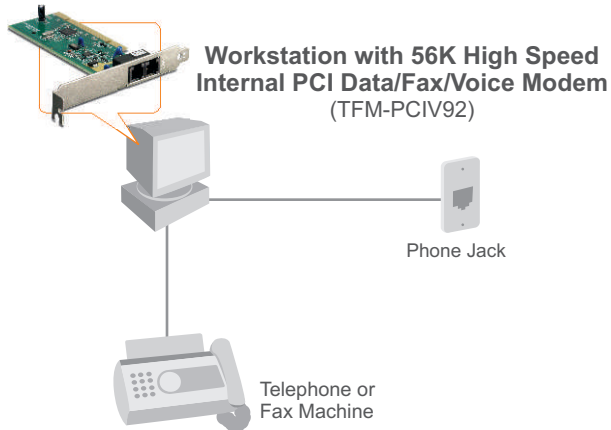
Package Content

- TFM-PCIV92
- Driver CD-ROM
- Quick Installation Guide
- 1 x RJ-11 Cable

System Requirements

- Computer with an available PCI slot Version 2.2
- CPU: Intel Pentium III Processor 260Mhz or above
- Memory: 32MB or above
- Hard Drive Space: 4MB or above
- Windows 2003 server/XP/2000/ME/98(SE)

Application



2. How to Install

Important! DO NOT install the TFM-PCIV92 in the computer until instructed to do so.

Windows 2000/XP

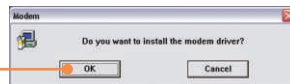
1. After inserting the **Driver CD-ROM**, the installation menu appears. Click **Install Modem driver**.



2. Click **Windows 2000 & XP**.



3. Click **OK**.



4. The progress window appears.



5. After the progress window disappears, close the installation menu. Click **X**.



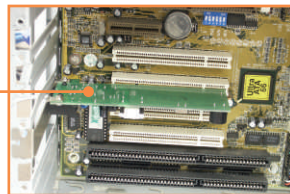
Note: You must leave the Driver CD-ROM in your computer's CD-ROM Drive before following the instructions below. Please refer to your computer's user manual regarding hardware installation.

6. Turn **OFF** computer and peripherals, and then disconnect all cables.

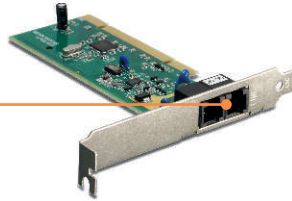
7. Open your computer's case.



8. Insert PCI Card firmly into free PCI Card slot of desktop PC, replace the computer's case, and then reconnect your computer's cables.



9. Connect a telephone wire from the modem's LINE port to a phone jack.



10. Turn **ON** your computer and wait until the Windows desktop appears.



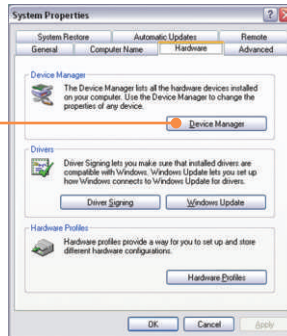
The Installation for TFM-PCIV92 is Now complete.

For detailed information regarding the TFM-PCIV92 configuration and advanced settings, please refer to the User's Guide CD-ROM or TRENDnet's website at www.trendnet.com.

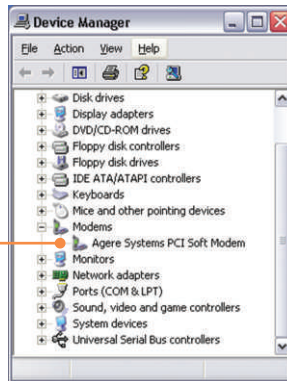
3. Verify Installation

Windows 2000/XP

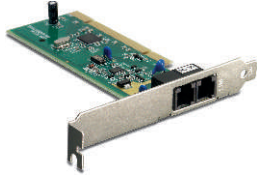
1. Right-click **My Computer** and click **Properties**. Under the Hardware tab, click **Device Manager**.



2. Expand the "Modems" heading to verify that the **Agere Systems PCI Soft Modem** has been installed and that no question marks or exclamation points are visible.



1. Что нужно сделать в самом начале



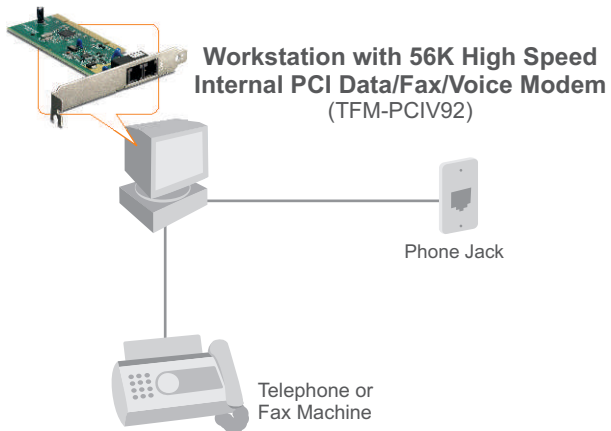
Содержимое упаковки

- TFM-PCIV92
- ЧЧЧЧЧ CD-ROM ЧЧЧЧЧЧЧЧ
- Руководство Ч ЧЧЧЧ ЧЧЧЧЧЧ
- 1 кабель RJ-11

С С С С С С С С С С С С С С С С С

- Компьютер с PCI-гнездом версии 2.2
- ЦП: Процессор Intel Pentium III с частотой 260 МГц или более
- Память: 32 МБ или более
- Место на накопителе на жестких дисках: 4 МБ или более
- Windows 2003 server/XP/2000/ME/98(SE)

Применение



2. Порядок установки

Это важно! НЕ получив необходимого указания, НЕ устанавливайте в компьютер устройство TFM-PCIV92.

Windows 2000/XP

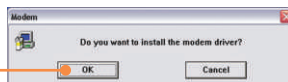
1. После того, как вы вставите диск CD-ROM с драйверами, появится меню установки. Щелкните по кнопке **Install Modem driver**.



2. Выберите **Windows 2000 & XP**.



3. Щелкните по кнопке **Далее**.



4. Отобразится ход выполнения операции.



5. После исчезновения окна с отображаемым ходом выполнения операции закройте окно установки. Щелкните по значку **X**.



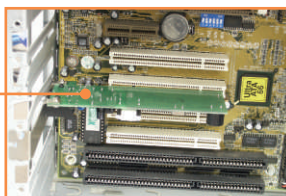
Примечание: Необходимо оставить CD-ROM-диск с драйверами в дисковом CD-ROM компьютере перед тем, как выполнять нижеуказанные указания. Ознакомьтесь с порядком установки оборудования в руководстве пользователя своего компьютера.

6. **Выключите** компьютер периферийные устройства, затем отсоедините кабели.

7. Откройте корпус компьютера.



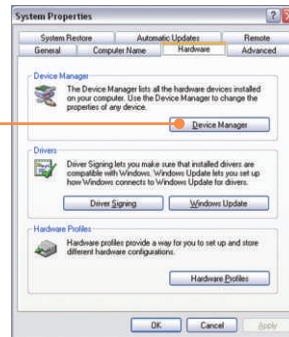
8. Плотно задвиньте PCI-карту в свободное PCI-гнездо настольного ПК, закройте системный блок и вновь подключите компьютерные кабели.



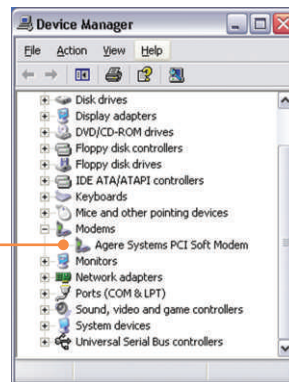
3. Проверка результатов установки

Windows 2000/XP

1. Правой кнопкой мыши выберите **Мой компьютер** и далее **Свойства**. Выбрав закладку **Оборудование**, щелкните по кнопке **Диспетчер устройств**.



2. Разверните строку "Modems" и убедитесь в установке модема **Agere Systems PCI Soft Modem** и отсутствии вопросительного или восклицательного знака.



Troubleshooting

Q1: I installed the modem into my computer's PCI Card slot and my computer does not detect the modem. What should I do?

A1: Make sure the computer meets the minimum system requirements and that the modem is properly inserted in the PCI slot. You may also try installing the modem into a different PCI slot.

Q2: Does the modem connect to the computer's sound card via an internal cable?

A2: The TFM-PCIV92 does not require an internal audio/microphone cable.

Q3: After successful installation of the TFM-PCIV92, I tried to connect to the Internet but I do not get a dial tone. What should I do?

A3.1: Unplug the telephone wire from the computer, and check for a dial tone by connecting the telephone wire directly from the wall outlet to a telephone. If there is no dial tone, then the problem is in your telephone wire or telephone system. Call your telephone service provider for assistance. If there is a dial tone, reconnect the cables to the modem and verify that the telephone cord is securely connected at the modem and phone jack.

A3.2: The TFM-PCIV92 does not have an internal speaker. Make sure that your sound card is properly installed and that your speakers are turned on. Also check that your sound card is not set to mute.

A3.3: If a PBX or other phone system is installed, check modem performance with a direct line from your telephone company. Some PBX may cause the telephone line condition change and effect modem performance.

If you still encounter problems or have any questions regarding the TFM-PCIV92, please refer to the User's Guide included on the Driver CD-ROM or contact Trendnet's Technical Support Department.

Certifications


This equipment has been tested and found to comply with FCC and CE Rules.

Operation is subject to the following two conditions:

- (1) This device may not cause harmful interference.
- (2) This device must accept any interference received. Including interference that may cause undesired operation.



Waste electrical and electronic products must not be disposed of with household waste. Please recycle where facilities exist. Check with you Local Authority or Retailer for recycling advice.



NOTE: THE MANUFACTURER IS NOT RESPONSIBLE FOR ANY RADIO OR TV INTERFERENCE CAUSED BY UNAUTHORIZED MODIFICATIONS TO THIS EQUIPMENT. SUCH MODIFICATIONS COULD VOID THE USER'S AUTHORITY TO OPERATE THE EQUIPMENT.



TRENDnet

TRENDnet Technical Support

US/Canada Support Center

Contact

Telephone: 1(866) 845-3673

Email: support@trendnet.com

Tech Support Hours

24/7 Toll Free Tech Support



European Support Center

Contact**Telephone:**

Deutsch : +49 (0) 6331 / 268-460

Français : +49 (0) 6331 / 268-461

0800-90-71-61 (numéro vert)

Español : +49 (0) 6331 / 268-462

English : +49 (0) 6331 / 268-463

Italiano : +49 (0) 6331 / 268-464

Dutch : +49 (0) 6331 / 268-465

Fax: +49 (0) 6331 / 268-466

Tech Support Hours

8:00am - 6:00pm

Middle European Time

Monday - Friday

Product Warranty Registration

Please take a moment to register your product online.

Go to TRENDnet's website at <http://www.trendnet.com>

TRENDnet

3135 Kashiwa Street

Torrance, CA 90505

USA

Copyright ©2006. All Rights Reserved. TRENDnet.

Free Manuals Download Website

<http://myh66.com>

<http://usermanuals.us>

<http://www.somanuals.com>

<http://www.4manuals.cc>

<http://www.manual-lib.com>

<http://www.404manual.com>

<http://www.luxmanual.com>

<http://aubethermostatmanual.com>

Golf course search by state

<http://golfingnear.com>

Email search by domain

<http://emailbydomain.com>

Auto manuals search

<http://auto.somanuals.com>

TV manuals search

<http://tv.somanuals.com>