

TU2-H4PC

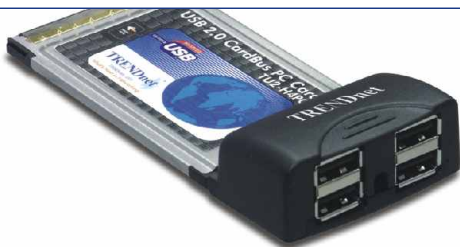
4-port USB 2.0 4-Port CardBus Adapter
Quick Installation Guide

Guide d'installation rapide de
l'adaptateur CardBus USB 2.0 à 4 ports

Anleitung zur Schnellinstallation des
USB 2.0 4-Port CardBus-Adapters

Guía de Instalación Rápida para
el Adaptador CardBus de 4 puertos USB 2.0 de 4 puertos

Version 09.02.04



TRENDnet[®]
TRENDware, USA
What's Next in Networking

Table of Contents

English	1
1. Prepare for Installation	1
2. Product Detail	2
3. Hardware Installation	3
4. Driver Installation	4
5. Verify Installation	9
Troubleshooting	11

English QIG

1. Prepare for Installation

Thank you for purchasing the TRENDnet TU2-H4PC 4-port USB 2.0 4-Port CardBus Adapter.

This guide will help you set-up your 4-port USB 2.0 4-Port CardBus Adapter. Following the installations should be quick and easy. If you run into problems, please refer to the Troubleshooting section. If you need further technical support, please visit www.TRENDNET.com or call technical support by phone.

Verify Package Contents

Please make sure you have everything in the box:



Minimum System Requirements

1. Pentium 266Mhz or faster processor
2. 64MB RAM or more
3. Available 32-bit CardBus Type II slot
4. Windows XP, 2000, ME, 98SE or Mac OS 10.1 or later

2. Product Detail

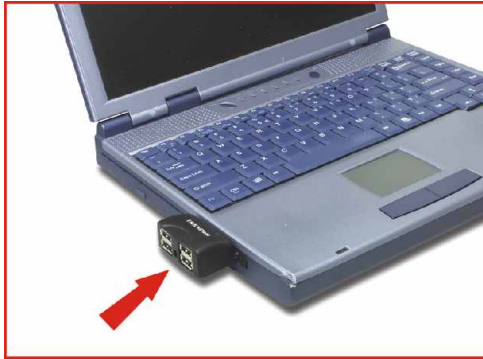
The USB 2.0 4-Port CardBus Adapter has 4 high speed USB ports.



4 USB 2.0 ports for connecting external USB peripherals

3. Hardware Installation

1. Boot up your laptop PC and make sure Windows's Desktop is properly loaded.
2. Insert the TU2-H4PC into an available PC Card slot
3. Make sure the TU2-H4PC is inserted all the way to the end of the slot



4. Your laptop should emit a beeping sound that indicates newly installed hardware.

4. Driver Installation

Windows 98SE/ME/2000/XP

After inserting the TU2-H4PC, the “Found New Hardware” will appear. Windows will automatically detect and ask you to install the USB 2.0 Driver for the TU2-H4PC.

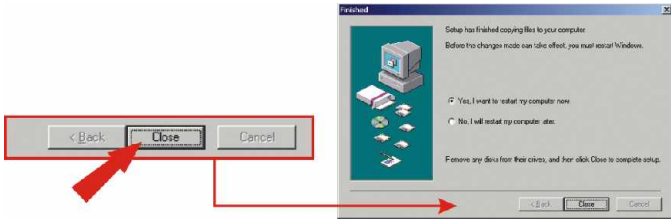
NOTE: Click the cancel button (this applies for Windows 98SE/ME/2000/XP) and install the USB Driver first as follow.

1. Insert the TU2-H4PC Driver CD-ROM into your computer's CD-ROM drive;
2. Double-click the “My Computer” icon on your Windows desktop.
3. Double-click the “CD ROM” drive, the “Driver” Folder, and the “Windows” Folder.
4. Double-click the file name “U2v2_062.exe” to install the USB 2.0 Driver for Windows.



Note: TRENDnet's USB 2.0 Host PCI Card have been fully tested under all supported Windows Operating Systems and have been approved for their functionality. For Windows XP, you will see a message regarding “not passed Windows Logo testing”, click Continue Anyway.

5. Click **Close** and restart the computer.



Windows XP/2000/Me

After your computer reboots, the “Found New Hardware” will appear. Windows XP/2000/Me will automatically detect and install a USB 2.0 driver for the TU2-H4PC.

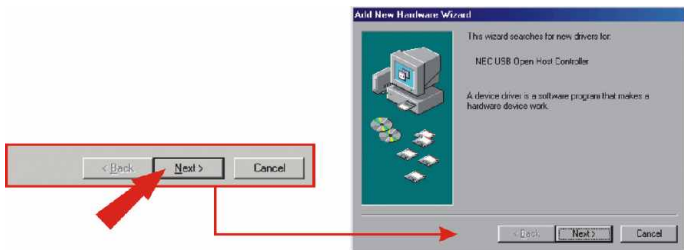
Congratulations!
Installation is now complete.

NOTE: If you would like to verify that the TU2-H4PC has been installed properly for your windows, go to the Verify Installation section.

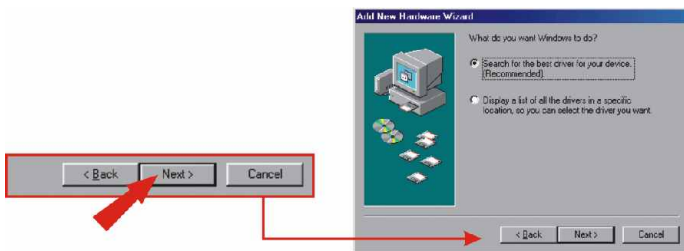
Windows 98SE

After your computer reboots, the “Add New Hardware Wizard” will appear. Windows 98SE will automatically detect and ask you to install a USB driver for the TU2-H4PC.

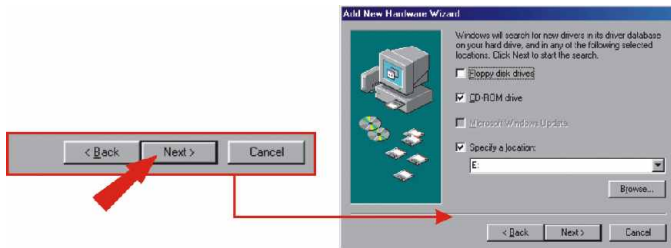
1. Click **Next**.



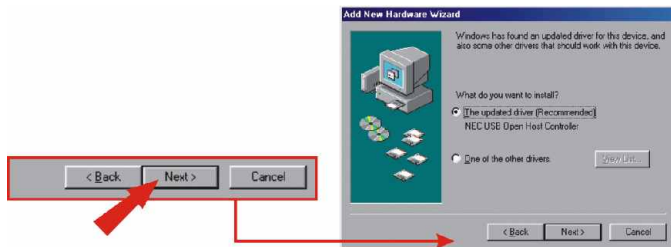
2. Click **Next**.



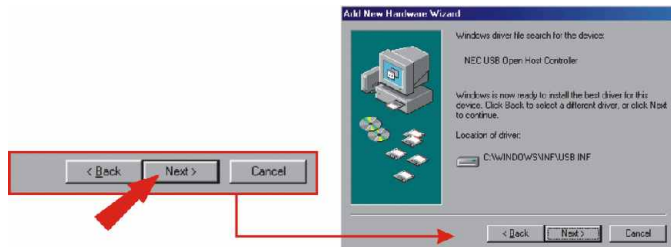
3. Click Next.



4. Click Next.



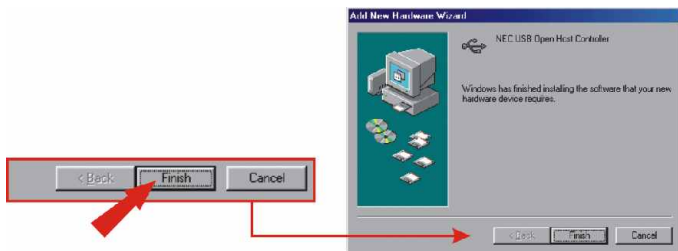
5. Click Next.



6. Insert the Windows 98SE CD-ROM into your computer's CD-ROM drive.



7. Click **Finish**.



8. You will need to install another **NEC USB Open Host Controller**. Please repeat steps 1~7

9. Restart your computer for the new settings to take effect.

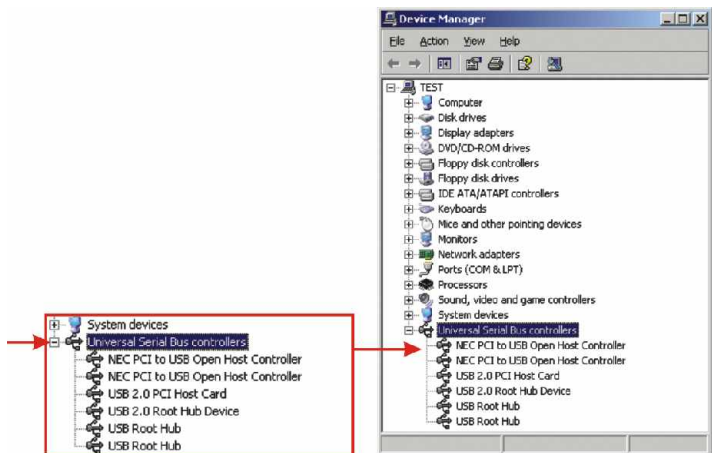
Congratulations!
Installation is now complete.

Note: If you would like to verify that the TU2-H4PC has been installed properly for your windows, go to the Verify Installation section.

5. Verify Installation

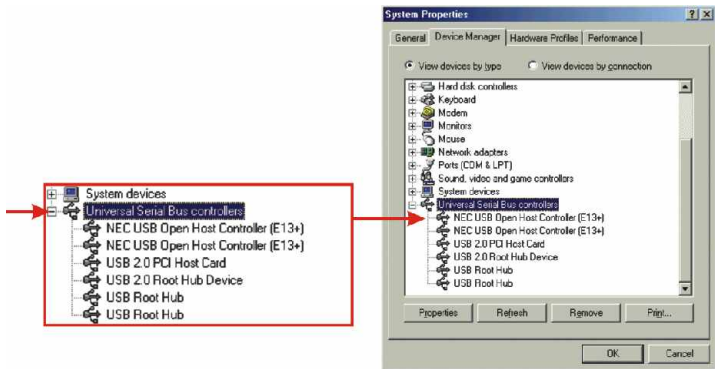
Windows 2000/XP

1. Click **Start**, and then click **Control Panel**. For Windows 2000, click **Start**, highlight **settings**, and click **Control Panel**.
2. Double-click the System icon. On the Hardware tab, click **Device Manager** tab.
3. Expand the “**Universal Serial Bus controller**” heading to verify that the Universal Serial Bus controller has been installed.



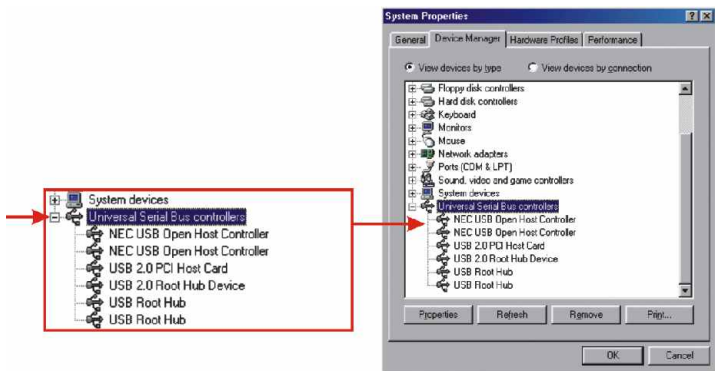
Windows ME

1. Click **Start**, click Settings, then click on **Control Panel**.
2. Double-click the System icon, and click **Device Manager** tab.
3. Expand the “**Universal Serial Bus controller**” heading to verify that the Universal Serial Bus controller has been installed.



Windows 98SE

1. Click **Start**, click Settings, then click on **Control Panel**.
2. Double-click the System icon, and click **Device Manager** tab.
3. Expand the “**Universal Serial Bus controller**” heading to verify that the **Universal Serial Bus controller** has been installed.



Troubleshooting

Q1. Can I connect or disconnect the USB cable while the computer is on?

A1. Yes, you can connect or disconnect the USB cable, or any external USB device while the computer is on, because the USB interface is Plug-and-Play and hot-pluggable.

Q2. I have a USB 1.1 cable. Can it work with USB 2.0 devices?

A2. Yes, it works but it may cause problems for connecting high-speed USB 2.0 external peripherals. Therefore it is recommended that you use certified USB 2.0 cable.

Q3. After successful installation of the TU2-H4PC USB 2.0 4-Port CardBus adapter, I connected my external USB device to the USB port, but it doesn't seem to work. What should I do?

A3. If you have an external AC power adapter comes with the external USB device, connect the AC power adapter to the device and power on the device. Also make sure that you have installed the correct driver for your external USB device in Windows.

If you have any questions regarding the TU2-H4PC USB 2.0 PC Card, please contact Trendware Technical Support Department.

Contact Technical Support

Telephone: +1-310-626-6252
Fax: +1-310-626-6267
Website: www.TRENDNET.com
E-mail: support@trendware.com

Technical Support Hours

7:00AM ~ 6:00PM, Monday through Friday
Pacific Standard Time (except holidays)

Certifications

This equipment has been tested and found to comply with Part 15 of the FCC Rules. Operation is subject to the following two conditions:

- (1) This device may not cause harmful interference.
- (2) This device must accept any interference received.
Including interference that may cause undesired operation.

This equipment is in compliance with the requirements of the following regulations: EN 55 022: CLASS B



TRENDnet[®]

TRENDware, USA

What's Next in Networking

Product Warranty Registration

Please take a moment to register your product online.
Go to TRENDware's website at <http://www.TRENDNET.com>

TRENDware International, Inc.
3135 Kashiwa Street
Torrance, CA 90505

<http://www.TRENDNET.com>

Free Manuals Download Website

<http://myh66.com>

<http://usermanuals.us>

<http://www.somanuals.com>

<http://www.4manuals.cc>

<http://www.manual-lib.com>

<http://www.404manual.com>

<http://www.luxmanual.com>

<http://aubethermostatmanual.com>

Golf course search by state

<http://golfingnear.com>

Email search by domain

<http://emailbydomain.com>

Auto manuals search

<http://auto.somanuals.com>

TV manuals search

<http://tv.somanuals.com>