



## Quick Installation Guide



**TEW-421PC**  
**TEW-423PI**

# Table of Contents

English .....	1
1. Before You Start .....	1
2. How to Install .....	2
3. Using the Wireless Adapter .....	6
Troubleshooting .....	8

# 1. Before You Start



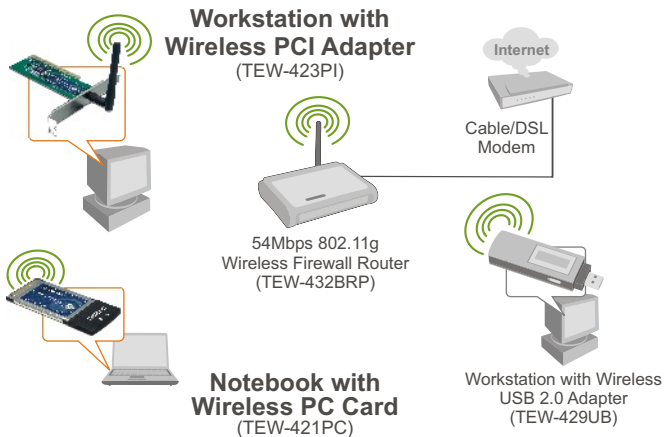
## Package Contents

- TEW-421PC/TEW-423PI
- Utility & Driver CD-ROM
- Quick Installation Guide

## System Requirements

- 32-bit CardBus Type II Card slot (TEW-421PC)
- 32-bit PCI 2.2 slot (TEW-423PI)
- CD-ROM Drive
- CPU: Intel Pentium 300MHz or above
- Memory: 32MB RAM or above
- Windows XP/2000/ME/98SE

## Application



54Mbps Wireless

## 2. How to Install

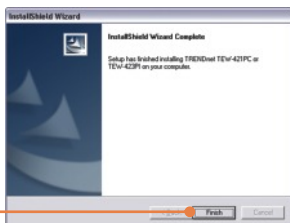
**Important!** DO NOT install the PCI adapter or PC Card in the computer until instructed to do so.

### For Windows Users

1. Insert the **Utility & Driver CD-ROM** into your computer's CD-ROM Drive and then click **Install Utility**.



2. Follow the **InstallShield Wizard** instructions and then click **Finish**.



3. Select the appropriate **country domain** and then click **OK**.



Note: Please refer to your computer's user manual regarding hardware installation. Then proceed to the appropriate section below.

## TEW-421PC

4. **Shutdown** your computer.



5. Insert PC Card firmly into an available PC Card slot on the notebook PC and then turn **ON** the computer and wait until the Windows desktop appears.



6. Go to **Step 10**.

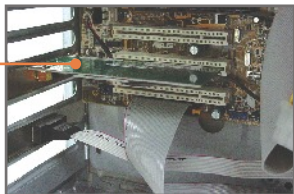
## TEW-423PI

7. **Shutdown** your computer.



8. Open your computer's case.

9. Insert PCI Card firmly into an available PCI Card slot on the desktop PC, attach the included antenna, and then turn **ON** the computer and wait until the Windows desktop appears.



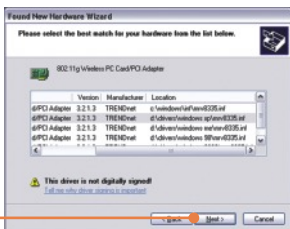
Note: For installation instructions for Windows 98SE and ME, refer to the User Guide on the Utility and User Guide CD-ROM. For Windows 2000, skip to step 14. For Windows XP, continue on to step 10.

## Windows XP

10. The **Found New Hardware Wizard** appears. Select **No**, not **this time** and then click **Next**.



11. Click **Install the software automatically (Recommended)** and then click **Next**.



12. Select the **Windows XP** drivers and then click **Next**.

13. Click **Finish**.

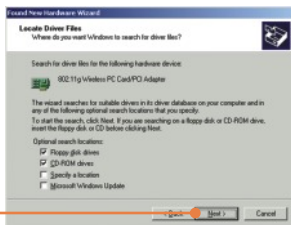
## Windows 2000

14. The Found New Hardware Wizard appears. Click **Next**.

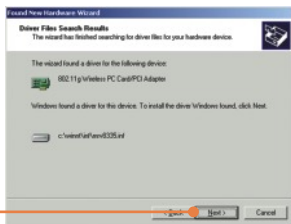
15. Select **Search for a suitable driver for my device (recommended)** and then click **Next**.



16. Click **Next**.



17. Click **Next**.



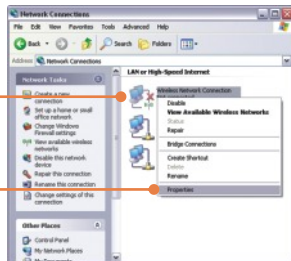
18. Click **Finish**.

Your installation is now complete.

## 3. Using the Wireless Adapter

**Note:** Windows XP Wireless Zero Configuration utility must first be disabled. If it is already disabled, then go to Step 3.

1. Go into the **Control Panel** and double-click the **Network Connections** icon. Right-click **Wireless Network Connection** icon and click **Properties**.



2. Click the **Wireless Networks** tab, uncheck **Use Windows to configure my wireless network settings**, and then click **OK**.

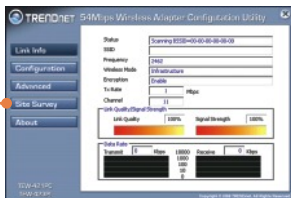


3. Double-click the **Wireless** icon in your system tray.

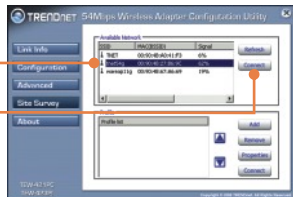




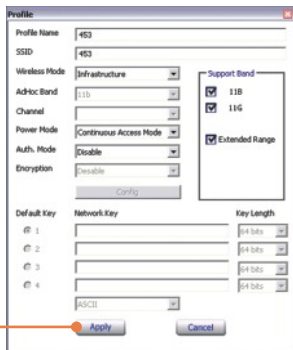
4. Click **Site Survey**.



5. Click the **SSID** that matches your wireless access point and then click **Connect**.



6. Set Profile settings of the wireless network and then click **Apply**.



**Wireless configuration is now complete.**

For detailed information regarding the TEW-421PC/TEW-423PI configuration and advanced settings, please refer to the User's Guide included on the Utility & Driver CD-ROM or TRENDnet's website at [www.trendnet.com](http://www.trendnet.com)

**Q1: I inserted the TEW-421PC/TEW-423PI CD-ROM into my computer's CD-ROM Drive and the installation menu does not appear automatically. What should I do?**

**A1:** If the installation menu does not appear automatically, click Start, click Run, and type D:\Autorun.exe where "D" in "D:\Autorun.exe" is the letter assigned to your computer's CD-ROM Drive. Then click OK to start the installation.

**Q2: How do I install the wireless card on Windows 98SE or ME?**

**A2:** Please refer to the User's Guide included on the Utility & Driver CD-ROM.

**Q3: I completed all the steps in the quick installation guide, but my card is not connecting to my access point. What should I do?**

**A3:** You should first verify that the Network Name (SSID) matches your wireless router or access point's SSID. If they already match, you should check your TCP/IP properties to ensure that Obtain an IP Address Automatically is selected. Refer to your Windows User's Manual if you are unable to locate your TCP/IP properties.

**Q4: Windows is unable to recognize my hardware. What should I do?**

**A4:** First, make sure your computer meets the minimum requirements as specified in Section 1 of this quick installation guide. Second, you must install the wireless configuration utility BEFORE you physically install your network card. Third, move the wireless card to a different PCI/PC Card Slot.

**Q5: I cannot open the wireless configuration utility. What should I do?**

**A5:** Access your device manager to make sure the adapter is installed properly. If you see a networking device with a yellow question mark or exclamation point, you will need to reinstall the device and/or the drivers. To access your device manager, right-click My Computer, click Properties, click the Hardware tab, and then click Device Manager.

If you still encounter problems or have any questions regarding the TEW-421PC/TEW-423PI, please refer to the User's Guide included on the Utility & Driver CD-ROM or contact Trendnet's Technical Support Department.

### Certifications

This equipment has been tested and found to comply with FCC and CE Rules.

Operation is subject to the following two conditions:

- (1) This device may not cause harmful interference.
- (2) This device must accept any interference received. Including interference that may cause undesired operation.



TEW-421PC: 0950-04-2375

TEW-423PI: 0949-04-2375

Este equipamento opera em caráter secundário, isto é, não tem direito a proteção contra interferência prejudicial, mesmo de estações do mesmo tipo, e não pode causar interferência a sistemas operando em caráter primário.

Waste electrical and electronic products must not be disposed of with household waste. Please recycle where facilities exist. Check with you Local Authority or Retailer for recycling advice.



**NOTE:** THE MANUFACTURER IS NOT RESPONSIBLE FOR ANY RADIO OR TV INTERFERENCE CAUSED BY UNAUTHORIZED MODIFICATIONS TO THIS EQUIPMENT. SUCH MODIFICATIONS COULD VOID THE USER'S AUTHORITY TO OPERATE THE EQUIPMENT.

### ADVERTENCIA

En todos nuestros equipos se mencionan claramente las características del adaptador de alimentación necesario para su funcionamiento. El uso de un adaptador distinto al mencionado puede producir daños físicos y/o daños al equipo conectado. El adaptador de alimentación debe operar con voltaje y frecuencia de la energía eléctrica domiciliar existente en el país o zona de instalación.



## TRENDnet Technical Support

### US • Canada

**Toll Free Telephone:** 1(866) 845-3673

24/7 Tech Support



### Europe (Germany • France • Italy • Spain • Switzerland • UK)

**Toll Free Telephone:** +00800 60 76 76 67

English/Espanol - 24/7

Francais/Deutsch - 11am-8pm, Monday - Friday MET

### Worldwide

**Telephone:** +(31) (0) 20 504 05 35

English/Espanol - 24/7

Francais/Deutsch - 11am-8pm, Monday - Friday MET

## Product Warranty Registration

Please take a moment to register your product online.

Go to TRENDnet's website at <http://www.trendnet.com>

**TRENDnet**<sup>®</sup>

20675 Manhattan Place  
Torrance, CA 90501  
USA

## Free Manuals Download Website

<http://myh66.com>

<http://usermanuals.us>

<http://www.somanuals.com>

<http://www.4manuals.cc>

<http://www.manual-lib.com>

<http://www.404manual.com>

<http://www.luxmanual.com>

<http://aubethermostatmanual.com>

Golf course search by state

<http://golfingnear.com>

Email search by domain

<http://emailbydomain.com>

Auto manuals search

<http://auto.somanuals.com>

TV manuals search

<http://tv.somanuals.com>