

TW100-W1CA
IP Sharing for
Cable Modem/xDSL

User Manual

FCC Certifications

This equipment has been tested and found to comply with the limits for a Class B digital device, pursuant to Part 15 of the FCC Rules. These limits are designed to provide reasonable protection against harmful interference in a residential installation. This equipment generates, uses and can radiate radio frequency energy and, if not installed and used in accordance with the instructions, may cause harmful interference to radio communications. However, there is no guarantee that interference will not occur in a particular installation. If this equipment does cause harmful interference to radio or television reception, which can be determined by turning the equipment off and on, the user is encouraged to try to correct the interference by one or more of the following measures:

- ?? Reorient or relocate the receiving antenna.
- ?? Increase the separation between the equipment and receiver.
- ?? Connect the equipment into an outlet on a circuit different from that to which the receiver is connected.
- ?? Consult the dealer or an experienced radio/TV technician for help.

Shielded interface cables must be used in order to comply with emission limits.

You are cautioned that changes or modifications not expressly approved by the party responsible for compliance could void your authority to operate the equipment.

This device complies with Part 15 of the FCC rules. Operation is subject to the following two conditions: (1) This device may not cause harmful interference, and (2) This device must accept any interference received, including interference that may cause undesired operation.

CE Mark Warning

This is a Class B product. In a domestic environment, this product may cause radio interference, in which case the user may be required to take adequate measures.

All trademarks and brand names are the property of their respective proprietors.

Specifications are subject to change without prior notification.

TABLE OF CONTENT

INTROUCTION.....	1
SAMPLE APPLICATION	1
FEATURES.....	2
PARTS NAMES AND FUNCTIONS.....	2
SYSTEM REQUIREMENTS.....	4
FACTORY DEFAULT SETTINGS	5
PASSWORD.....	5
LOCAL AND GLOBAL PORT ADDRESSES.....	5
INFORMATION FROM ISP.....	5
CONFIGURATION.....	6
CONFIGURATION IN GUI.....	6
<i>How to start.....</i>	6
<i>Management</i>	7
<i>Local Port.....</i>	9
<i>Global Port</i>	10
<i>Virtual Server</i>	11
<i>Packet Filters</i>	12
CONFIGURATION IN TERMINAL PROGRAM MODE.....	15
<i>How to start HyperTerminal</i>	15
<i>How to start Telnet</i>	16
<i>Starting Configured</i>	17
TERMINAL COMMAND.....	18
PASSWD.....	18
SHOW	19
SET	20
VSERV.....	21
RELEASE.....	22
RENEW	23
USER.....	23
PING.....	24
SESSION.....	24
FILTER.....	25
<i>MAC address filter:.....</i>	25
<i>IP address filter :</i>	26
<i>Port Filter.....</i>	27
FIRMWARE UPGRADE.....	28
SYSTEM REQUIREMENTS.....	28
BEFORE UPGRADE.....	28

PERFORMING FIRMWARE UPGRADE	28
CHANGING PASSWORD	31
FOR GUI	31
FOR TERMINAL.....	31
FORGET YOUR PASSWORD?	32
PPP OVER ETHERNET (PPPOE).....	33
WHAT IS PPPOE?	33
HOW CAN I KNOW I AM USING PPPOE?.....	33
CHECKING PPPOE CONNECTIONS	33
1. For GUI Setup program.....	33
2. Checking PPPoE status through terminal	33
FAQ.....	34
FACTORY RESET	34
IP ADDRESS CONFLICT	35
MY INTERNET APPLICATION WON'T WORK	35
CAN NOT ACCESS THE INTERNET	38
DIAGNOSIS.....	40
<i>TCP/IP Network Diagnosis</i>	40
<i>ISP Connectivity Checkup</i>	42
<i>Internet Connectivity Checkup</i>	42
GETTING TECHNICAL SUPPORT	43
APPENDIX A SPECIFICATIONS	44
APPENDIX B SUPPORTED INTERNET APPLICATIONS	45

INTRODUCTION

IP Share device is designed for IP address simplification and conservation, as it enables private IP Internet works that use non-registered IP addresses to connect to the Internet. It usually connects two networks together, and translates the private (not globally unique) addresses in the internal network into single legal address before packets are forwarded onto another network. Therefore, only one IP address is needed for the entire network to the outside world. This provides additional security, effectively hiding the entire internal network from the world behind that address.

Sample Application

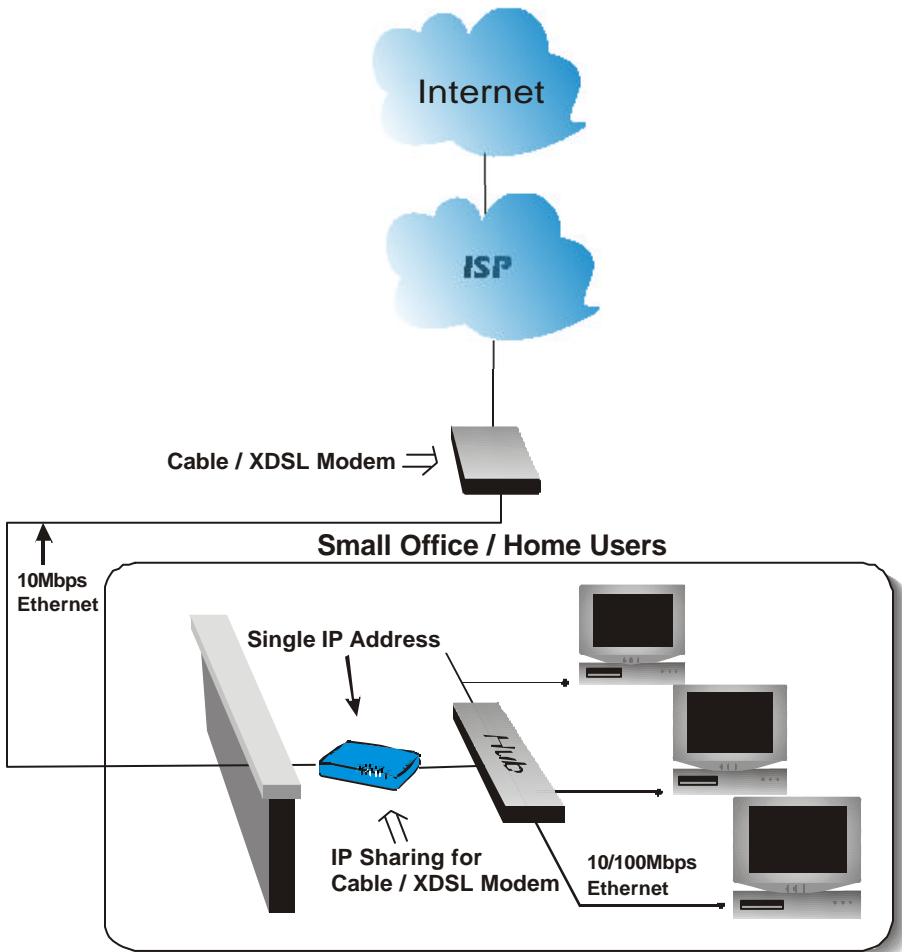


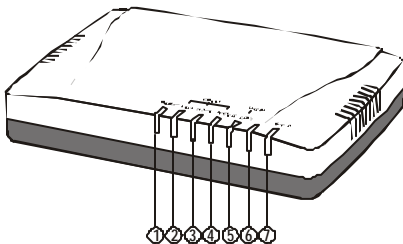
Figure 1: Small Office/ Home Office Setup

Features

- ?? Supports PPPoE.
- ?? Supports VPN.(PPTP pass through).
- ?? Explicit LED indication for Internet connection.
- ?? Supports Internet applications such as Web, ICQ, FTP, Telnet, E-Mail, News, NetMeeting, PCAnyWhere, mIRC , CuSeeMe, AoE,...
- ?? Natural firewall keeps hackers out.
- ?? DHCP server allocates up to 128 client IP addresses.
- ?? DHCP client gets global IP address automatically.
- ?? 10/100Mbps dual speed auto-sensing for flexible network connectivity.
- ?? Virtual server.
- ?? Rich packet filters.
- ?? Static routing.
- ?? Supports Proxy-DNS.
- ?? Easy to setup by Windows GUI program and Telnet through network, or HyperTerminal through Console.
- ?? Flash memory for firmware upgrade.

Parts Names and Functions

LED Indicators on the Front Panel



Ports on the Rear Panel

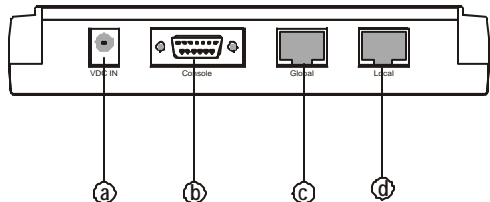


Figure 2: LED Indicators and Ports

	LED Indicator	Color	Status		
			Glowing	Dim	Flashing
⌘	Power	Green	Power On	Power Off	N/A.
⌘	Local Link	Green	Connected to a LAN device	Disconnected from any LAN device	Receiving/ Sending data
⌘	Local 100/10	Green	100Mbps detected	10Mbps detected	N/A.
⌘	Local Full/Half	Green	Full duplex	Half duplex	N/A.
⌘	Global Link	Green	Connected to a Cable/DSL Modem	Disconnected from any Cable/DSL modem	Receiving/ Sending data
⌘	(blank)	Green	Internet connected ¹	Internet disconnected	N/A
⌘	Error	Red	Components malfunctioning	N/A.	N/A.

Table 1: LED Indicators

	Port Name	Functions
a	VDC IN	Connects the power adapter plug.
b	Console	Connects an RS-232 serial cable to your computer for ?? Configuring from terminal programs ?? Firmware upgrade.
c	Global	Connects to Ethernet port on Cable Modem or DSL Modem for Internet Access.
d	Local	Connects to the Ethernet Hub/Switch on LAN.

Table 2: Connections Ports

¹ For Cable modem connection, it means the device has received an IP address from the ISP.
For DSL modem connection, it means PPPoE connection has been established.

System Requirements

Your system must meet the following requirements to use the product's Setup program. If you are using a Unix or apple based system, telnet should be used to configure the product.

This product's GUI setup interface requires

1. Windows 95, 98, ME, NT or 2000.
2. IE4.01 or above well-installed.

Telnet and Terminal setup are operating system independent.

FACTORY DEFAULT SETTINGS

Password

The default setting for password has been left blank in the factory. Press **Enter** then you are logged in for the first time. It is recommended that you set a password for security and management purpose.

If you ever forget the password to log in, you can only reset the factory setting. Refer to the next section titled “**Factory Reset**” for details.

Local and Global Port Addresses

The LAN parameters of the product are pre-set in the factory. The default values are shown below.

Local Port		Global Port
IP address	192.168.1.254	DHCP client function is <i>enabled</i> to automatically get the Global port configuration from ISP.
Subnet Mask	255.255.255.0	
DHCP server function	Enabled	
IP ADDRESSES FOR DISTRIBUTION TO PCS	128 IP addresses continuing from 192.168.1.1 through 192.168.1.128	

Table 3: Local and Global Port Addresses

Information from ISP

If your IP address is provided *dynamically* by your ISP (Internet Service Provider), skip this step. If you have a static address from your ISP, gather the information as illustrated in the following table and keep it for reference.

	IP address
ISP-assigning IP address	Ex. 203.66.81.201
Subnet mask	Ex. 255.255.255.0
Gateway	Ex. 203.66.81.254
DNS server #1	Ex. 203.66.81.251
DNS server #2	Ex. 203.66.81.252

Table 4: Assigned Addresses

CONFIGURATION

The product can be configured through the setup program (included in the package), through a terminal emulation program, such as Windows HyperTerminal, or through Telnet. The product can be set with a range of options to allow it to function in most any network environment.

Configuration in GUI

How to start

1. For the first time installation, in Windows, run **setup.exe** at the root directory.

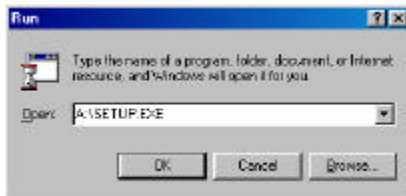


Figure 3

2. When the setup program is installed, go to **Start** \llcorner **Programs** \llcorner **IP Share Setup**.

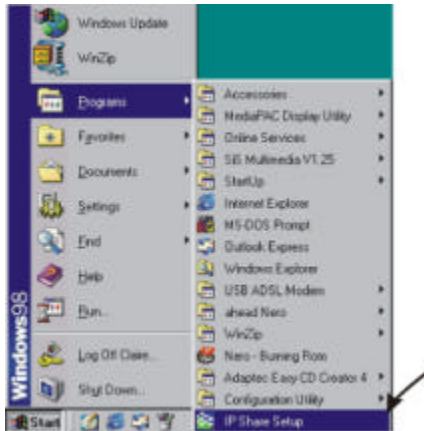


Figure 4

3. When the opening screen appears, click **Find** to find the device you want to configure.

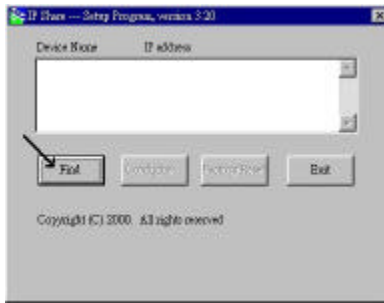


Figure 5

Select the device that you would like to setup and then click **Configure**.

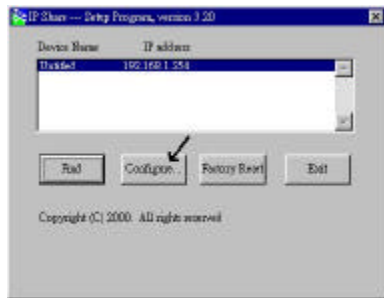


Figure 6

The **configure** dialog box is categorized into several tabs as shown in the following.

Management

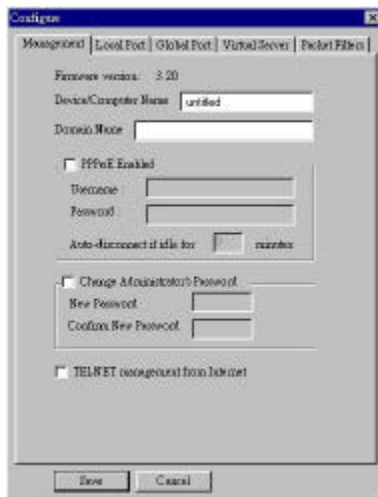


Figure 7

Firmware Version: Read-only.

Device/Computer Name: For you to enter a descriptive name for identification purpose. Some Internet Service Providers (ISP) requires this information. The Maximum input for this field is **20** alphanumeric characters and it is case sensitive.

Domain Name²:

*For example: **yourcompany.com**.* The maximum input for this field is 32 alphanumeric characters and it is case insensitive.

PPPoE Enabled: If you are using PPPoE service, please check this box and enter the username and password provided by your ISP.

PPPoE functions

?? *Single Account Sharing:* Multiple users can share one account.

?? *Automatically connected to the Internet:* Just launch your Internet program and the unit will login and get on-line automatically.

?? *Automatically disconnected from the Internet:* This device will disconnect automatically when it has been idle for a certain period of time.

Username: (for PPPoE)

?? Maximum input is 52 alphanumeric characters (case sensitive).

Password: (for PPPoE)

?? Maximum input is 36 alphanumeric characters (case sensitive).

Auto-disconnect...: This device can be configured to auto-disconnect when there is no activity on the line for a certain period of time.

?? Default: **5** minutes. You can input any number from 0 to 65535.

?? To keep the line always connected, please set the number to **0**.

Change Administrator Password: In this dialog box, you can set administrator's password.

?? **Maximum: 6** alphanumeric characters (case sensitive).

² Your ISP may ask you to input a certain domain name. Domain name is also required for internal network's email and news functions.

TELNET management...: Checking this item lets you manage this device remotely from outside of the network through Telnet.

?? Default: disabled.

Local Port

This screen contains settings for LAN interface attached to the local network.



Figure 8

IP Address

?? Default: 192.168.1.254

SubNetmask

?? Default: 255.255.255.0

Do not distribute IP address to local computers³

Checking this radio button to disable this IP Sharing device to distribute IP Addresses.

Distribute IP addresses to local computers

Checking this radio button to enable this IP Sharing device to distribute IP Addresses. And the following field will be activated for you to enter the starting IP Address:

³ If you check this selection, please specify unique static IP address for each of your local computers.

Continuous IP address pool starts at

The starting address of this local IP network address pool. The pool is a piece of continuous IP address segment.

Number of IP address in pool

?? Maximum: 128. Default: 128

Global Port

This screen contains settings for the Global interface toward Internet.

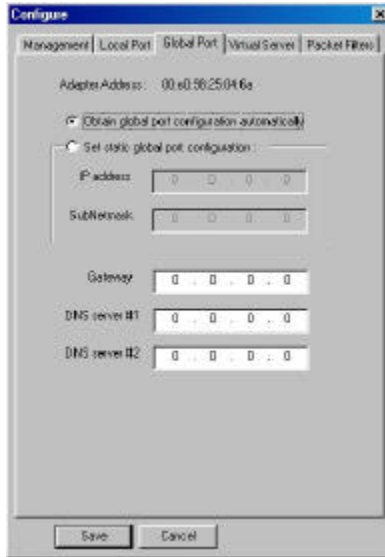


Figure 9

Adapter Address: Read-only. It is necessary for some ISP to identify this device by its MAC address.

Obtain global port configuration automatically: If it is checked, the Global port IP address is obtained through DHCP protocol after the device boots up. The address may vary each time the device restarts.

Set static global port configuration: Check this item if your ISP provides you with a fixed IP address.

IP address: Provided by your ISP.

SubNetmask⁴: Provided by our ISP.

Gateway/DNS server #1/DNS server #2: These values will be automatically provided once you click “**Obtain global port configuration automatically**”. You can change the values if necessary.

Virtual Server

Being a natural Internet firewall, this IP Sharing device protects your network from being accessed by outside users. When there is application that requires outside users to access internal servers (e.g. Web Server, Ftp Server, e-mail Server or News Server), this device can act as a virtual server to public services. You can set up a local server with specific port number which stands for the service (e.g. web(80), FTP(21), Telnet(23)). When this device receives an incoming access request for this specific port, it will be forwarded to the corresponding internal server.



Figure 10

Single Port/Port Range: For selecting between a specific port and a range of ports which you want the Internet users to be able to access. The valid port number ranges from 0 to 65535.

Browse: If DHCP function is enabled, the distributed IP Addresses will appear on the screen. You can select the desired IP address (for the specified port) and add it to the server list.

⁴ If you checked PPPoE in **Management** tab (see the **Management** section), the “**Obtain global port configuration automatically**” and the “**Set static global port configuration**” fields are grayed out and will not accept any input.



Figure 11

Port Type: please select the port type (TCP or UDP) for the port number that was entered earlier.

Note: Maximum 12 Server Entries is allowed. Each port number can only be assigned to one IP address.

Packet Filters

In the Packet Filters setup screen, you can block specific internal users from accessing the Internet and you can also disable specific Internet services. You can set up the filters through the following three types of filter. Each filter can be set to **filter (drop)** or **forward (pass)** packets. You can input up to six filters in this device.

MAC Address Filter: filter according to **local** computer's network adapter MAC address (also known as the adapter card's Physical Address).

IP Address Filter: Filter with computer's IP address. You can filter a single IP, or a range of the IP addresses.

?? **LANIP:** filtering IP address of a **local** computer.

?? **WANIP:** filtering IP address of a **remote** server (this remote server that connects to Internet via this Internet Station).

Port Filter: Filter using the port number. You can set filter for a single port or a range of ports.

?? **TCP port:** filter according to the Connection-Based Application Service on the **remote** server using the port number.

?? **UDP port:** filter according to the Connectionless Application Service on the **remote** server using the port number.

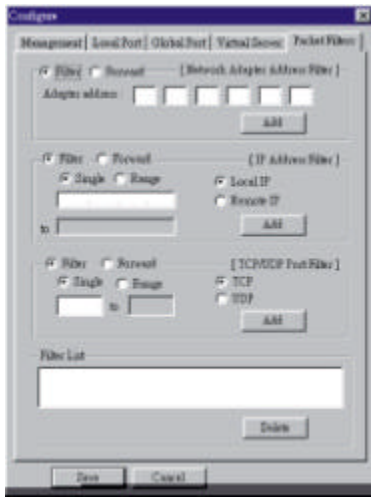


Figure 12

Network Adapter Address Filter:

Filter according to **local** computer's network adapter MAC address.

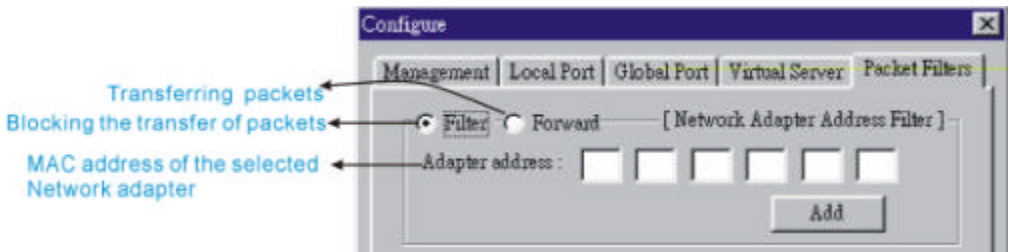


Figure 13

Network Adapter's MAC address consists of 12 alphanumeric characters

(i.e. 00 ab 12 cd 34 ef) and it is normally printed on a sticker on the network adapter.

If you have Windows 95, 98, or 98Me, go to "Start", select "Run", and type in **winipcfg**. Select the "network adapter" and you can find the Physical Address on the screen.

If you have NT or Win2000, open a DOS prompt window, type in **ipconfig /all** and then press "Enter". The MAC (Physical) Address along with adapter's IP information will appear on the screen.

IP Address Filter:

Allows IP address range setting.

Local IP: Filter according to the IP address of the **local** computer.

Remote IP: Filter using the IP address of a **remote** server (i.e. Web Server).

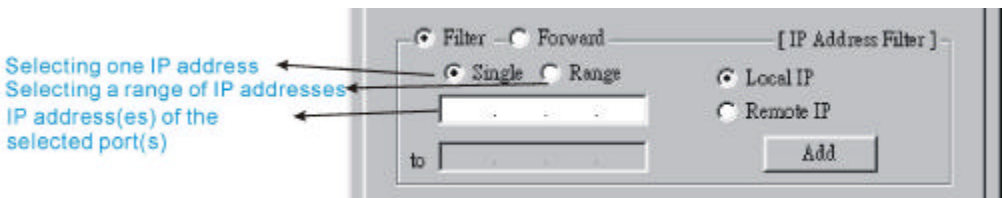


Figure 14

TCP/UDP Port Filter

TCP port: filter according to the Connection-Based Application Service on the **remote** server using the port number.

UDP port: filter according to the Connectionless Application Service on the **remote** server using the port number.



Figure 15

When you have finished setting the filters, the added filters will appear on the **Filter List**. To remove a filter, click on the filter on the Filter List and click **Delete**.

After the configuration, click on **Save** to save the settings.

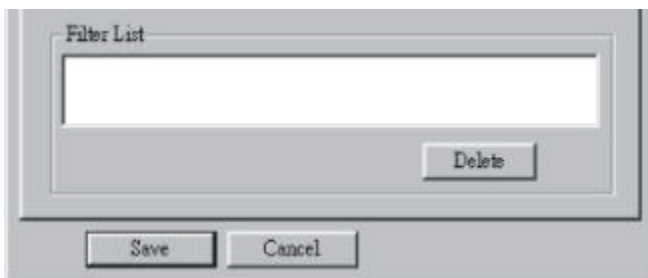


Figure 16

Please see examples on how to setup filters in **Terminal Command** section under **vserv**.

Configuration in Terminal Program Mode

You can use terminal emulation on your PC/workstation for the initial and future configuration of your product. Windows HyperTerminal or other terminal emulation applications can be used.

If you prefer, a telnet session can be opened directly. Telnet provides the same type of terminal emulation. For security purposes, the product uses port **333** for telnet. All of the following Terminal Mode Configuration menus are identical in the telnet session, with the exception that any saved changes that result in the product rebooting, will require user to open a new telnet session to reestablish a connection with the product. For more information on telnet configuration, please see “How to Start Telnet” section below.

How to start HyperTerminal

1. Power off the Internet Station.
2. Connect an RS-232 cable from one Serial COM port on your PC to your product’s Serial Console port
3. In Windows, go to **Start** \sphericalangle **Program** \sphericalangle **Accessories** \sphericalangle **Communications** \sphericalangle **HyperTerminal**.
4. When the HyperTerminal window appears, double-click **Hypertrm** to start a new session.
5. Name the new connection and select an icon for this session.
6. In the **Connect To** dialog box, select the COM port that you used to connect to the Internet Station.



Figure 17: Connect To:

7. When the dialog box in Figure 18 appears, select the **Bits per second** rate as **38400**, and **Flow control** at **None**. Click **OK** to complete the setting. See Figure 18.

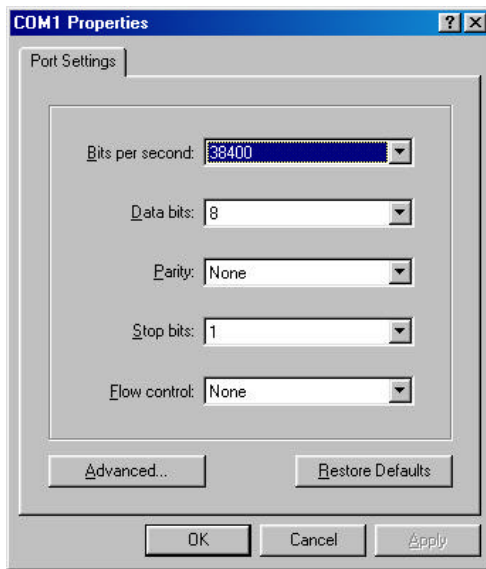



Figure 18: COM 1 Properties

8. Power up the product.

How to start Telnet

1. The instructions below are for using this unit at its default settings (i.e. DHCP enabled, Local Port IP address: 192.168.1.254, Subnet: 255.255.255.0).
2. Go to **Start**  **Run**.

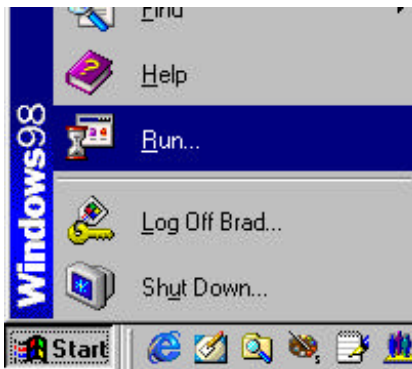


Figure 19

3. Type **"telnet 192.168.1.254 333"** and click on **OK**. If the local port's IP address was set to something other than the factory default ("192.168.1.254"), enter that IP address.

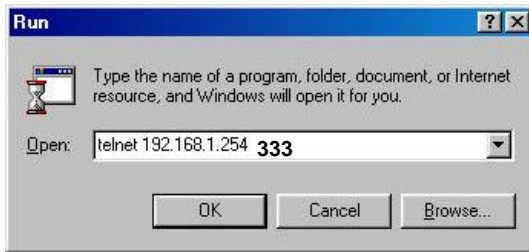


Figure 20

Starting the Configuration

1. Once the connection is made successfully either via HyperTerminal or Telnet, the following information will appear,
Dual Ethernet IP Share for Cable/xDSL Modem, version X.XX
Administrator password:
2. No password is required the first time you log in. Press <**ENTER**> to enter Configure mode. The screen prompts you for the following command.
command>
3. Type ? and hit “Enter” for a list of the commands.

Refer to the next section “**Terminal Commands**” for detail description of terminal commands.

TERMINAL COMMAND

Type **?** or **help** to list the main menu commands as below.

```
command>help
```

```
Dual Ethernet IP Share for Cable/xDSL Modem, version X.XX
```

```
=====
```

Command	Description
help	Show this message
session	List active internet sessions
show	Display active configuration
user	List active local IP address leases
filter	Set packet filters
passwd	Change administrator's password
ping <x.x.x.x>	Ping the specified host
release	Abandon the dynamic Global port configuration
renew	Refresh the dynamic Global port configuration
set	Configure device in batch
vserv	Set internal virtual server mapping
quit	Exit to login prompt
reboot	Restart device

```
=====
```

passwd

?? No password is required when logging in for the first time.

- ?? At command>, type in **passwd** and hit “Enter” to enter the password setup screen.
- ?? Password can be up to six characters long.
- ?? Password can contain letters, numbers, and spaces.
- ?? Password is case sensitive.
- ?? To set or change your password, key in up to six characters and hit “Enter”. You will be prompted to reenter your password for verification. Return to the Start screen by typing quit.
- ?? Test your new password to verify it has taken effect.

Example:

```
command>passwd  
  
Please type old password :  
  
type new password (0 to 6 characters) : ****  
  
re-type new password (0 to 6 characters) : ****
```

show

Displays the current configuration. For first-time login, the current configuration is the factory default settings. Refer to section titled “**Factory Default Setting**” for detail.

Example:

```
command>show  
  
Wan Mac Address: AB CD 12 34 56 78  
  
IP address of local port: [192.168.1.254]  
  
SubNet mask of local port : [255.255.255.0]  
  
Distribute IP addresses to local computers : [Yes]  
  
Continuous IP address pool starts at : [192.168.1.1]  
  
Number of IP address in pool : [128]  
  
Enable PPPoE : [No]
```

Obtain global port configuration from ISP : [Yes] .. under claiming
IP address of global port : [0.0.0.0]
SubNetmask of global port : [0.0.0.0]
Device name : [Untitled]
Domain name : [Domain]
Gateway : [0.0.0.0]
Primary DNS server : [0.0.0.0]
Secondary DNS server : [0.0.0.0]

set

After executing the **set** command, the current settings will appear on the screen one at a time. Press **Enter** to accept the current value in the bracket or input new value and then press **Enter** to change the value. Press **<Esc>** at any time to abort this command.

Example:

```
command>set  
  
Press <ENTER> if you agree with the default value,  
or <ESC> to escape.  
  
IP address of local port [192.168.1.254] :  
SubNetmask of local port [255.255.255.0] :  
  
Distribute IP address to local computers?(Yes/No) [Yes] :  
Continuous IP address pool start at [192.168.1.1] :  
Number of IP address in pool [128] :  
  
Enable PPPoE?(Yes/No) [No] :  
  
Obtain global port configuration from ISP?(Yes/No) [Yes] :  
IP address of global port [0.0.0.0] :
```


SubNetmask of global port [0.0.0.0] :

Device name (0 to 20 characters) [Untitled] :

Domain name (0 to 36 characters) [Domain] :

Gateway [0.0.0.0] :

Primary DNS server [0.0.0.0] :

Secondary DNS server [0.0.0.0] :

New configuration will be:

IP address of local port : [192.168.1.254]

SubNetmask of local port : [255.255.255.0]

Distribute IP addresses to local computers : [Yes]

Continuous IP address pool starts at : [192.168.1.1]

Number of IP address in pool : [128]

Enable PPPoE : [No]

Obtain global port configuration from ISP : [Yes]

IP address of global port : [0.0.0.0]

SubNetmask of global port : [0.0.0.0]

Device name : [Untitled]

Domain name : [Domain]

Gateway : [0.0.0.0]

Primary DNS server : [0.0.0.0]

Secondary DNS server : [0.0.0.0]

Save and reboot ?(Yes/No) : [No]

vserv

Displays the internal virtual server mapping. You can set (including add, delete) the applications' names and the corresponding IP addresses of the local servers. “**Natural firewall**” allows requests for Internet access from the Local network, but requests from the

Internet to the local network are blocked. Computers outside the Intranet are allowed to access specific ports by using the **vserv** command.

There are four operation choices for **vserv** command: 1) Show, 2) Add, 3) Del, 0) Quit.

Example:

command>vserv

Set local virtual server mapping (maximum 12),

or <ESC> to escape

Operations => 1)Show 2)Add 3)Del 0)Quit : **2** *≈ Add a virtual server*

Port number/application name : **80** *≈ it's a Web server*

Type => 1)tcp 2)udp : **1** *≈ select TCP port*

Server IP address : **192.168.0.254** *≈ IP address of the local Web server*

Below are some Port Numbers for some Internet applications:

Nameport	Number
ftp	21
telnet	23
pop3	110
smtp	25
dns	53
www	80
news	119
gopher	70

Table 5

release

Gives up the obtained global port configuration. Executing this command disables the device, unless the user executes the **“renew”** command as described below to retrieve configurations.

Example:

```
command>release
```

Give up the obtained global port configuration

Note: if you choose NOT to obtain the global port configuration from your ISP, this command won't be executed and the following message will appear.

```
command>release
```

Works only if 'Obtain global port configuration from ISP' is enabled

renew

You must renew the global port configuration after you have released it. Otherwise the device is disabled. The 'Show' command enables you to see the configuration. The device will not work until you renew the global port configurations.

Example:

```
command>renew
```

Update global port configuration

(You can type 'Show' command to view the new configuration)

Note: If you choose NOT to obtain the global port configuration from your ISP, this command won't be executed and the following message will appear.

```
command>renew
```

Works only if 'Obtain global port configuration from ISP' is enabled

user

Displays the current active users (up to 128 users).

Example:

```
command>user
```

IP address	Node address	Remainder time	Host name
192.168.10.1	0080-C8F8-8A64	5:47:17	Allen
192.168.10.2	0080-C8F8-8A64	expired	Calvin
192.168.10.3	0080-C8F8-8A64	0:12:25	Edward

```

192.168.10.4      0080-C8F8-8A64   2:55:48          Victoria
192.168.10.5      0080-C8F8-8A64   expired          SNL

Total 5 user, 3 active lease.

Elapsed  0:01:03

```

Ping

Ping is a basic Internet program that lets you verify that a particular IP address exists and can accept requests. At command> type in **ping** and then the **IP address** that you wish to detect. If the screen shows “reply ok!” from that IP, the device can communicate with that IP address. If the screen shows “no response!”, that IP address is unreachable.

Example:

```

command>ping 192.168.1.1

Reply OK.

command>ping 192.168.1.5

No response!

command>

```

session

List active Internet sessions through this device.

Example:

```

command>session

```

	IP	Port	Port	IP	Port	
T/U Flag	client	client	fake	remote	remote	idle
A PType						
-----+-----+-----+-----+-----+-----+-----+-----						
tcp	37	192.168.10.27	1062	4133	210.66.41.132	110 0
GERNERAL						
tcp	7	192.168.10.31	1032	4136	211.75.84.154	80 0
GERNERAL						

tcp	7	192.168.10.31	1033	4138	211.75.84.154	80	0
GERNERAL							
tcp	7	192.168.10.32	1729	4139	140.113.39.195	110	0
GERNERAL							
tcp	7	192.168.10.27	1063	4140	210.66.41.132	110	0
GERNERAL							
udp	1	192.168.10.31	1028	16385	168.95.192.1	53	20
GERNERAL							
udp	1	192.168.10.32	1726	16386	168.95.1.1	53	5
GERNERAL							
udp	1	192.168.10.32	1728	16387	168.95.192.1	53	5
GERNERAL							

Active >> TCP:5,UDP:3 (Maximum >> TCP:128,UDP:64)

filter

This device supports three types of filter. Each type of filter can be set to perform **filter (drop)** or **forward (pass)** function. User can input up to six sets of filter in this device.

MAC address filter:

Example: Set the MAC address filter to prohibit the computer with network adapter address 0080C8123456 to access Internet.

```
command>filter
```

Set filter (maximum 6),or <ESC> to escape

Operations => 1)Show 2)Add 3)Del 0)Quit **2** *add a new filter*

Filter Type => 1)MAC 2)LAN IP 3)WAN IP 4)TCP 5)UDP **1** *for MAC address*

Action => 1)Forward 2)Filter **2** *drop on match*

MAC Address(12 HEX-digit) : **0080c8123456** *the MAC address to be examined*

Show Setting:

Operations => 1)Show 2)Add 3)Del 0)Quit **1**

Item	Type	Action	From	To
1.	MAC	Filter	0080C8123456	

IP address filter:

Example 1: Set IP address filter to allow those local computers with IP address from 192.168.0.25 to 192.168.0.32 to access Internet.

Operations => 1)Show 2)Add 3)Del 0)Quit **2**

Filter Type => 1)MAC 2)LAN IP 3)WAN IP 4)TCP 5)UDP **2 filter on IP address of local computers.**

Action => 1)Forward 2)Filter **1 pass on match**

IP Address (x.x.x.x): **192.168.0.25-192.168.0.32 IP address range**

Example 2: Inhibit all local users from accessing a specific web server on the Internet.

Operations => 1)Show 2)Add 3)Del 0)Quit **2**

Filter Type => 1)MAC 2)LAN IP 3)WAN IP 4)TCP 5)UDP **3 filter on IP address of remote server**

Action => 1)Forward 2)Filter **2 drop on match**

IP Address (x.x.x.x): **203.66.99.100 remote IP address**

Show Settings:

Operations => 1)Show 2)Add 3)Del 0)Quit **1**

Item	Type	Action	From	To
LAN IP	Forward		192.168.0.25	192.168.0.32
WAN IP	Filter		203.66.99.100	203.66.99.100

With the combination of the above two filter examples, the workstations with IP address 192.168.0.25, 192.168.0.26, 192.168.0.27, ... and 192.168.0.32 can access the Internet via the Internet Router, but none of the workstations can access the 203.66.99.100 Web Server (web site).

Port Filter

Example 1: Allow users to access Web service only.

Operations => 1)Show 2)Add 3)Del 0)Quit **2**

Filter Type => 1)MAC 2)LAN IP 3)WAN IP 4)TCP 5)UDP **4** *filter on server service*

Action => 1)Forward 2)Filter **1** *allow access*

TCP port (xxx, or xxx-yyy): **80** *port number for web service*

Example 2: Inhibits all local computers from accessing some services.

Operations => 1)Show 2)Add 3)Del 0)Quit **2**

Filter Type => 1)MAC 2)LAN IP 3)WAN IP 4)TCP 5)UDP **5**

Action => 1)Forward 2)Filter **2**

UDP port (xxx, or xxx-yyy): **20-25** *services of FTP(20,21), TELNET(23), E-MAIL(25) are disabled.*

FIRMWARE UPGRADE

System Requirements

- ?? One free COM port on PC.
- ?? A pin-to-pin RS-232 cable. One end is 9 pin male connector, the other end is 9 or 25 pin female connector depends on the COM port.
- ?? **FWLOAD.EXE** : This is an auxiliary program for firmware upload.
- ?? **FIRMWARE.BIN** : This is a firmware image file.
- ?? **LOAD.EXE**: This is the main program.

The above three files **MUST** reside in the same subdirectory.

For better disk access speed, it is recommended that you copy these two files to your hard disk before uploading them to the product.

Before Upgrade

Close all other Windows programs and power off this device.

Performing Firmware Upgrade

1. Connect the RS-232 cable from the Console port of the device to the PC's COM port.
2. Create a temporary folder in your system (e.g. **NewFirmware.**). Copy the downloaded firmware file (should be a compressed file, e.g. **FW3_20.EXE**) to this temporary folder. Decompress the file to any desired folder.
3. Open the folder with the new firmware and double-click **LOAD.EXE**.

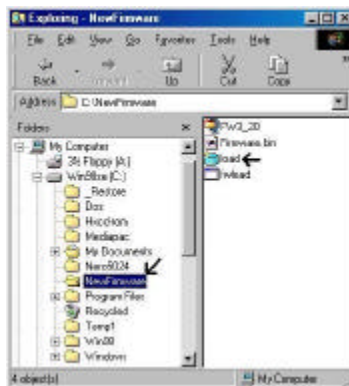


Figure 21

4. Select the COM port that is connected to the device and click the **Start** button.

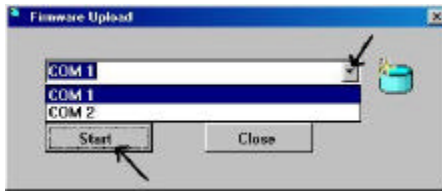


Figure 22

- When the following screen appears, power on the device.



Figure 23

- Expect to wait for a few seconds before the upload program detects the device. Once the device is detected, the program will start uploading the firmware automatically. The upload process takes a couple of minutes. After the upload is completed, this device will automatically restart.

Note: DO NOT interrupt the firmware uploading process.

- When the upload finished, the screen should look like Figure 24 below.

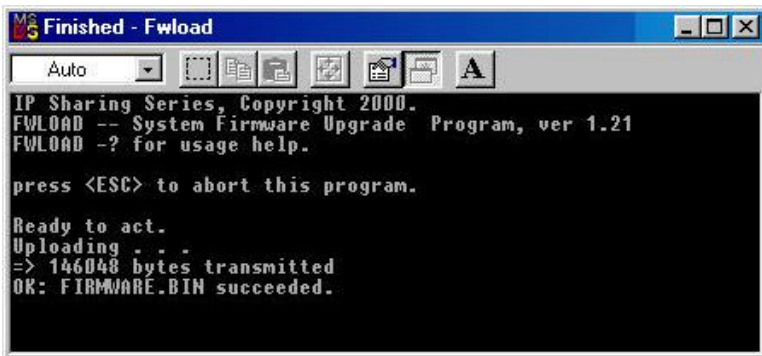


Figure 24

If any error message appears, check the cable connection and make sure that you have selected the correct COM port, then perform the upgrade again.

CHANGING PASSWORD

The device has no password at default. It is recommended that you change the default passwords to ensure that someone cannot adjust the devices settings.

Using GUI

1. Start this device by running **setup.exe** as described in the chapter titled “**Configuration**”.
2. Check “Change Administrator’s Password.”
3. Enter the desired new password in “New Password”. Enter the new password again in the “Confirm New Password” field.

Please note that the password is case sensitive.

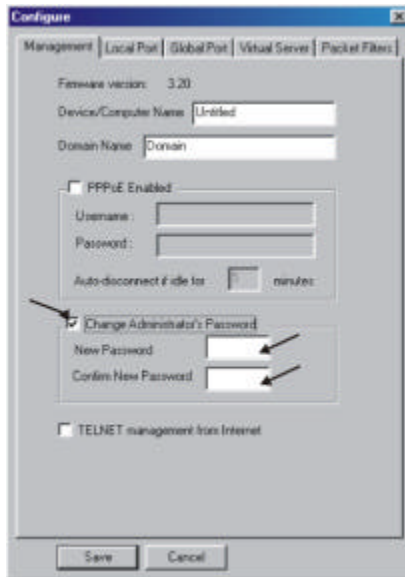


Figure 25

Using Terminal Mode

Refer to the previous section titled “**Configuration in Terminal Program**” for terminal emulation. After seeing the following command prompt, follow the instructions in italic fonts to setup the new password. Please note that passwords are case sensitive.

```
command>passwd
```

```
Please type old password: **** Type in old password and press  
<Enter>
```

Note: In default, there is no password, so just leave this entry blank and hit "Enter" to continue.

*type new password (0 to 6 characters) : ***** Type in the new password and press <Enter>*

*re-type new password (0 to 6 characters) : ***** Re-type the new password and press <Enter>*

Forgot your password?

Refer to **FAQ** section for "Factory Reset" procedures.

PPP OVER ETHERNET (PPPOE)

What is PPPoE?

PPPoE is known as a dial-up DSL service. It is designed to integrate the broadband services into the current widely deployed, easy-to-use, and low-cost dial-up-access networking infrastructure. Thus, customer can get greater access speed without changing the operation concept.

How can I know I am using PPPoE?

A PPPoE client software provided by our ISP should be installed onto your computer first. Run the program to connect/disconnect to the Internet each time before/after you surf.

An user account is also required each time you request the Internet access.

Checking PPPoE Connections

1.For GUI Setup program

1. Go to **Start** \searrow **Programs** \searrow **IP Share Setup**.
2. When the **configure** screen appears, select the Global Port tab. Refer to the previous section titled “**Configuration in GUI**”.
3. Check if the value of Global port IP address is **0.0.0.0**. If it is, that means the PPPoE connection failed. If the Global Port IP is **not all zeros**, then the PPPoE connection is successful.

2. Checking PPPoE status through Terminal Mode

1. Start Telnet or HyperTerminal as described in the previous section titled “**Configuration in Terminal Program**” for terminal emulation.
2. At the command prompt, type **show** command.

```
command>show
```
3. If the string of IP address of global port is 0.0.0.0, this means you are not connected. If it is anything other than 0.0.0.0 (non-zero), it means the connection is good.

Note:

Once the PPPoE setup is completed on this device, do not run any PPPoE client software on the local workstations.

FAQ

Factory Reset

If for any reason, e.g. password being forgotten, you have to reset this device to factory default settings. By performing the Factory Reset, the current settings will be lost and the settings are reseted to default.

The factory default values is detailed in the section **Factory Default Settings**.

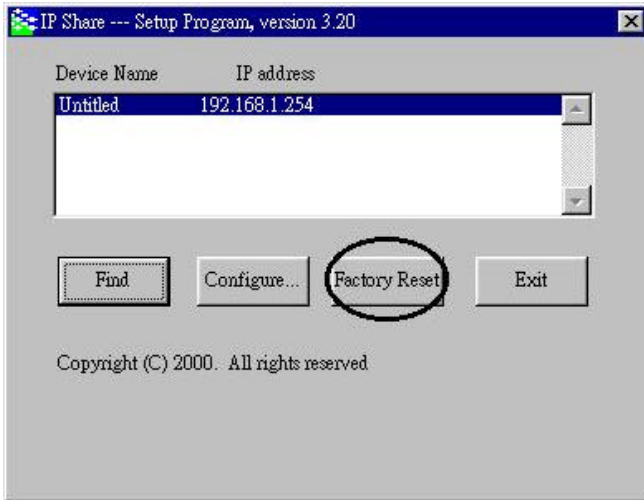


Figure 26

“I can't find the product using the GUI Setup Software”

For the GUI Setup Software to find the device, it has to be accessed from a client. This means that the computer you are trying to use to run the software must be setup as described in the section **Configuration in GUI**. Also, the computer should be restarted to ensure that it is receiving IP address from the device.

To verify that your computer's TCP/IP protocol is setup properly, use the "winipcfg" utility in Windows (95, 98, and 98Me). To run this, go to Start-->Run, type "winipcfg" in the Run box, and then click "OK". Make sure the Network Adapter Card is selected and then press the "More Info" button on the bottom right hand corner.

Look at the box labeled DHCP Server, this should be the product's IP address (192.168.0.1 as default). If it is not, or it is blank or reads 255.255.255.255 then you may have a cabling problem (see above), or you may have another DHCP server on your network. In either case, please follow the installation guide again, and ONLY connect the device, the client, and your modem together. If you are on a network, it is recommended that you contact your IS manager for further assistance with DHCP settings. Placing an IP Sharing Device that passes out IP

addresses on a LAN with an existing DHCP server may cause problems throughout a network. It is recommended you disable other DHCP servers on the network if you plan on using this product on the network.

IP address conflict

When you see the message box prompted for IP address conflict, this means two or more workstations has the same IP address. If you have setup the device as a DHCP server, please run the "**winipecfg**" utility to "release" all current configuration first, then "renew" the IP information again. If the DHCP function is disabled and static IP addresses are assigned to each workstation, please double check each workstation's IP address for duplicate IP.

My Internet application won't work

To protect your computer from Hackers, the product uses "port blocking" technology. A port is like a door into your computer. Each service on the Internet has an associated port. The device protects your computer by closing certain ports, so that malicious programs can't access your computer. However, if you are using an application that requires one of these blocked ports, the application will not work. In this case, you will have to manually open these ports to allow the application to work properly.

Some applications that may be affected are

*Some **Email Programs***

*Some **Multi-Player Games***

*Some **Internet Phone/Video Conferencing Applications***

Also, there are some applications, which require reverse connection over the Internet. In other words, when you are connected to these applications, you have to open your ports for two-way connection.

The first thing you will need to do is determine what port (or ports) the application uses. The fastest way to find this information is to go to the software maker's web site, go to the support section, and look for information related to NAT, Proxy Server, or Firewall. This information will typically list 1 to 3 ports that need to be opened for proper operation of the software. If you can't find the necessary information, call the software maker and ask for what ports need to be opened for the software to work through a firewall.

Once you have the necessary port information, follow the instructions below to setup the "Virtual Server".

A. Launch the Windows GUI Setup Software and press "**Find**". Once the GUI Setup Software finds the product, press "**Configure**":

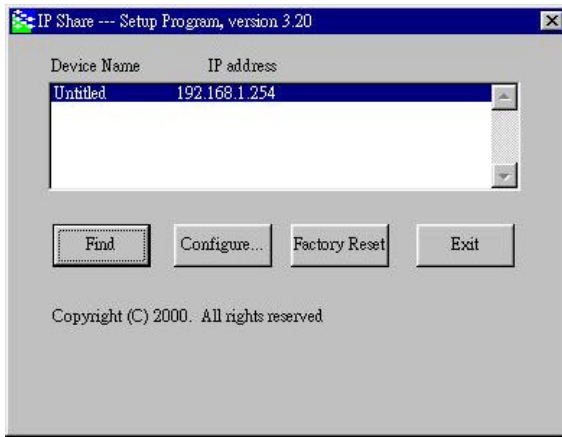


Figure 27

B. Choose the "Virtual Server" tab:

C. Enter one of the port numbers that your application requires and press "Browse".

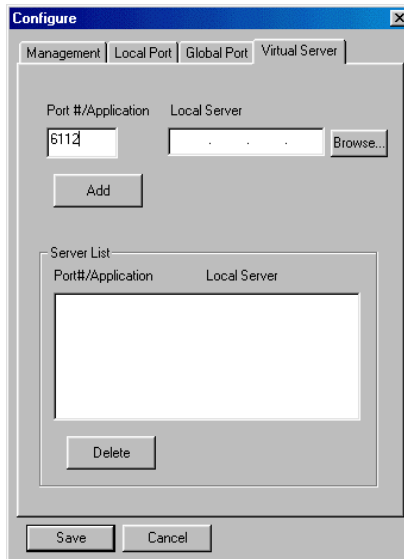


Figure 28

D. Choose the computer that is using the application and press "Select".

Note: If you know the IP address of the computer that is using this application, you can enter it in the "Local Server" and then click "add".

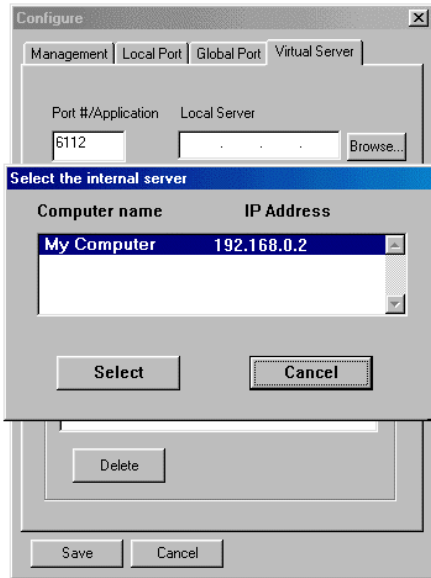


Figure 29

E. Press Add. Repeat this process for each individual port you need to open.

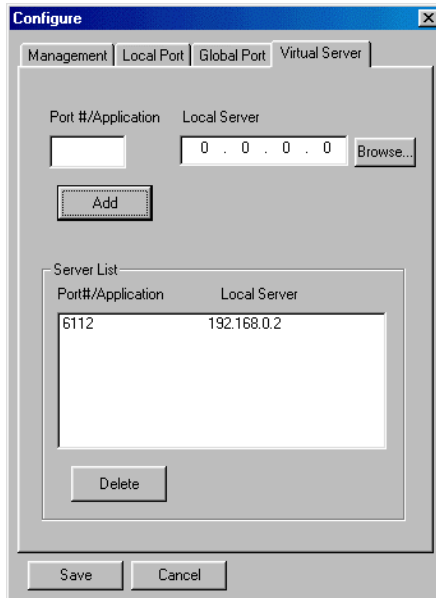


Figure 30

F. Press Save. Wait 30 seconds for the device to reboot and then try the application again. It may be necessary to restart your application or your computer for the application to recognize the change.

Can not access the Internet

For **Cable Modem** users, find the workstation's "Computer" name and then input this name in the device's "Device/Computer Name" field.

1. On the Workstation (95, 98, and 98Me), go to **Start** \neq **Control Panel** \neq **Network**, and select **Identification** tab. Copy the Computer name as shown in the left figure below. For Win2000, right click on "my computer", select "properties", click on "network identifications", click on "properties", and then copy the computer name.
2. Run the GUI setup program, select the device, and click on "Configure" to go to the **Management** tab.
3. Paste the name on to the field "**Device/Computer Name**" as shown in the right figure below.

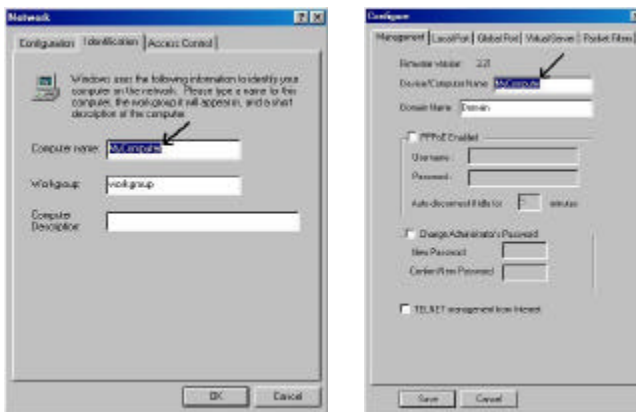


Figure 31

For DSL PPPoE users, make sure you have entered the username along with your ISP domain name. For example, `username@earthlink.net`, which is composed by username (provided by your ISP) followed by your ISP's domain.

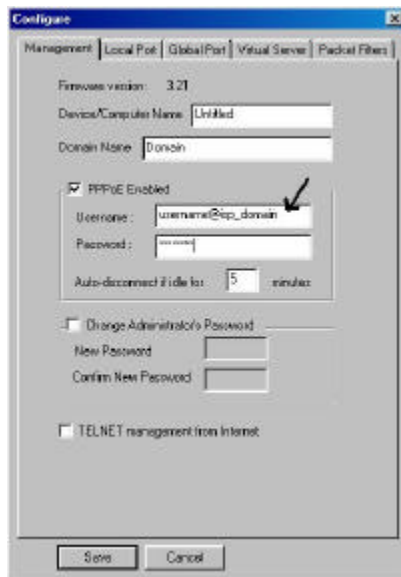


Figure 32

Check the physical connectivity of local network.

Check if both the LEDs of Local and Global on the product's front panel are green. If yes, go to next step. Otherwise, make sure you are using the correct cables and the cables are connected to the network devices properly.

Check the physical connectivity of the broadband device.

Examine the LED of LAN port and the LED of the broadband signal input on the Cable Modem/xDSL Modem. If the LAN LED is off, make sure you are using the correct cables and the cables are connected to the devices properly. If the LED of the broadband signal is off, please contact your ISP.

Note: You can also call your ISP and make sure the Internet service is still online.

Check the status of this product.

If your ISP assigned you an IP address, please skip this step. Otherwise, use the HyperTerminal program to "release" and "renew" the current IP address of the Global port. After that, type "Show" command to see if "obtain global port configuration from ISP" shows the address is "claiming" or "under claiming". If the IP address is "claiming", go to next step. If the result is "under claiming", reboot the product and check it again. If the result still is "under claiming", please contact your ISP and find out if the service is still available.

Check the logical connectivity from your computer to the Internet.

Refer to the section "PING.EXE" in the "TCP/IP Network diagnosis" chapter. Follow the described steps to find out where the problem is.

Diagnosis

TCP/IP Network Diagnosis

Execute *WINIPCFG.EXE* or *PING.EXE* for TCP/IP network diagnosis.

WINIPCFG

The WINIPCFG program (for Win95, 98, and 98Me) is used to gather information about the TCP/IP connections that are active on your system. It cannot be used to dynamically adjust TCP/IP connections. You can also renew leases (if allowed by the network), and get the current IP address assignments through this program.

From Windows, go to **Start**, click **Run**, enter **WINIPCFG**, and click **OK**.

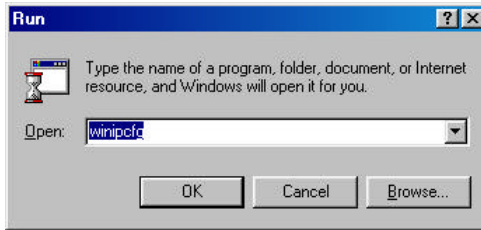
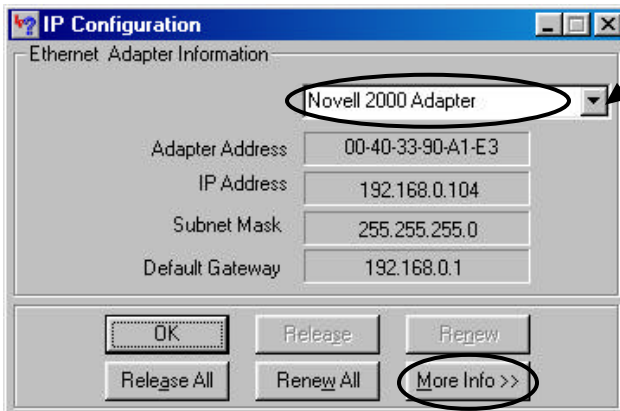


Figure 33: Run WINIPCFG

The following figure displays the adapter address and current TCP/IP address.

Note: At the “Ethernet Adapter Information”, select the correct Ethernet adapter that is installed in this computer.



Select the correct Ethernet adapter.

Figure 34: IP Configuration

Click the **More Info** button to get detailed configuration information.

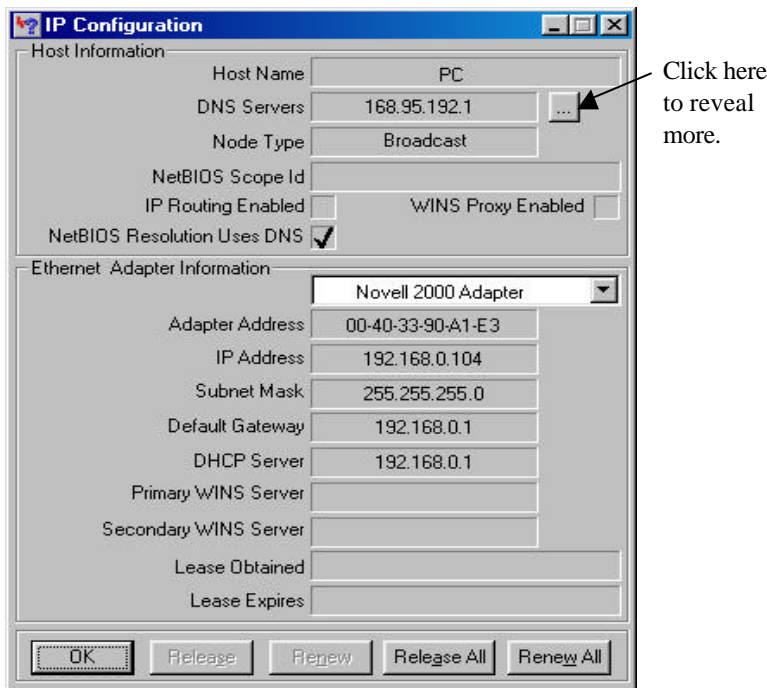


Figure 35: IP Configuration

On the top, the “Host Name” and “DNS server” of the computer are configured to call when it is looking for a named resource. The default gateway is the server through which the client connects to the Internet. The DHCP Server identifies the network server that assigns IP addresses to computers on the network.

If the product is working properly, the following should be apparent from this screen:

- 1) The Client should have an IP address within the prescribed range.
- 2) The “DHCP” and “Default Gateway” should list the product’s local port address (the device’s IP address).
- 3) The DNS server IP addresses should match the DNS server IP addresses set in the device.

PING.EXE

Ping is used to verify that a computer is active and available. Users can ping a specific destination domain name or just the IP address.

Example :

For example, to find the server 168.95.192.1, type the following command at the MS-DOS prompt:

```
C:\>ping 168.95.192.1.
```

PING can be executed in Windows as shown below:

1. Go to the **Start** menu.
2. Click **Run**.
3. Type **ping 168.95.192.1** and click **OK**.
4. The server (IP address) is online if the following message appears.

Reply from 192.168.0.1: bytes=32 time=3ms TTL=100

5. The destination device is not reachable if the following message appears.

Reply from 192.168.0.1: Destination host unreachable.

or

Request timed out.

ISP Connectivity Checkup

Issue a PING command to the IP address of your ISP's Gateway or DNS server.

Note: If the global port was set to obtain configuration automatically, you need to check these settings via the Windows GUI.

For Example:

```
C:\> PING 203.66.81.254
```

If successful, you can reach your ISP server.

If unsuccessful you may be having trouble connecting to your ISP, please verify that the product is properly configured to connect to your ISP. Also verify that your Cable/DSL modem and the line are functioning properly.

Internet Connectivity Checkup

PING to an IP address or domain name on Internet.

For Example:

```
C:\> PING 168.95.192.1 -w 5000
```

```
C:\> PING www.yahoo.com -w 5000
```

If successful, you are connected to the Internet.

If you can ping the ISP's gateway, but cannot ping a specific site (i.e. www.yahoo.com) on the Internet, chances are, your ISP has an internal problem. Please call them for support.

Getting Technical Support

You can also contact us for technical support.

TRENDware

www.trendware.com

E-mail: techsupport@trendware.com

Phone: 310-891-1100

APPENDIX A SPECIFICATIONS

Protocols	IP, NAT, ARP, ICMP, DHCP
Management/Setup	Locally, via direct serial cable connection through Console port
Options	Locally, via GUI for Windows 95/98/NT Remotely via Telnet (needs to enabled this function via GUI)
Local Port	RJ-45, 10/100 Dual Speed Ethernet
Global Port	RJ-45, 10Mb Ethernet to an external Cable/DSL Modem
Console Port	DB-9 female connector
LED Indicators	Power, Local Link, Local Speed 10/100, Local Full/Half Duplex, Internet Link, Error
Input Power	5V DC @2.4A
Power Consumption	3.5 watt (max).
Agency and Regulatory:	FCC part 15 Class B, VCCI, CE
Physical Dimension:	160 x 105.4 x 27 mm ³ (L x W x H)
Weight:	218g
Operating Temperature:	0? to 50?
Operating Humidity:	0-90% non-condensing

APPENDIX B SUPPORTED INTERNET APPLICATIONS

Application	Settings for Outgoing Connection	Setting for Incoming connection
ICQ98a,99b	None	None
Netmeeting 2.1 & 3.0	None	1503(tcp) 1720(tcp)
AOE	2300-2400(tcp) 2300-2400(udp) 47624(tcp)	2300-2400(tcp) 2300-2400(udp) 47624(tcp)
VDO Live	None	None
mIRC	None	None
Cu-Seeme	7648(tcp) 7648(udp) 24032(udp)	7648(tcp) 7648(udp) 24032(udp)
PCAnywhere	5632(udp), 22(udp), 5631(tcp), 65301(tcp)	5632(udp), 22(udp), 5631(tcp), 65301(tcp)

Free Manuals Download Website

<http://myh66.com>

<http://usermanuals.us>

<http://www.somanuals.com>

<http://www.4manuals.cc>

<http://www.manual-lib.com>

<http://www.404manual.com>

<http://www.luxmanual.com>

<http://aubethermostatmanual.com>

Golf course search by state

<http://golfingnear.com>

Email search by domain

<http://emailbydomain.com>

Auto manuals search

<http://auto.somanuals.com>

TV manuals search

<http://tv.somanuals.com>